

**SOURCE**  
M A N U F A C T U R I N G  
FAA APPROVAL NO. PQ1549CE

**SMI Part No:** F06-083-20-CSMI - Rear Roller Carriage Shroud - RH

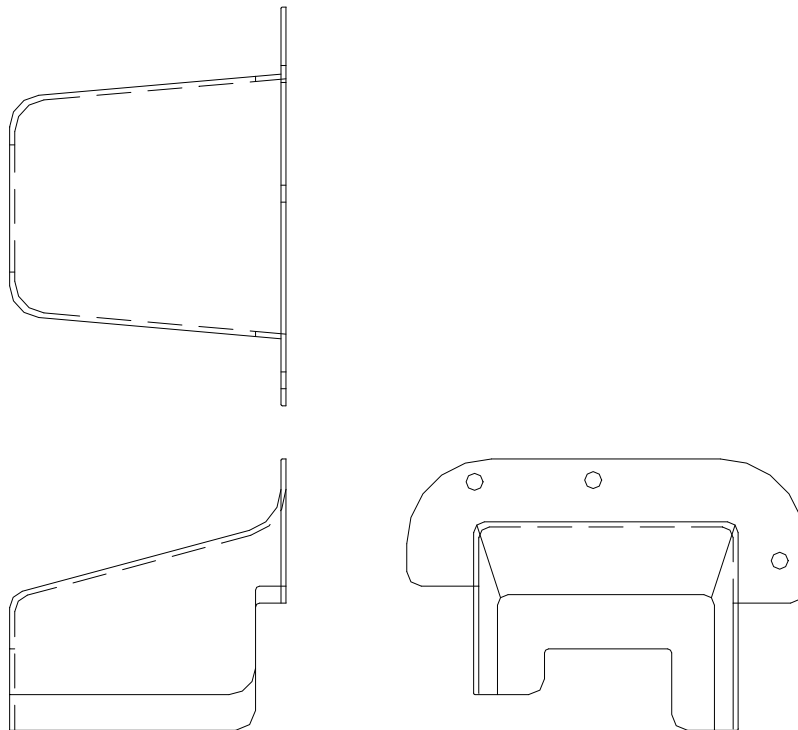
**OEM Part No:** F06-083-20-C

**Supp. No:** 4

**NHA:** -

**ATA:** 25

**Eligibility:** A300 & A310 Aircraft



2850 Kirby Circle • Palm Bay, Florida 32905 • Tel: 321.676.1000 • Fax: 321.676.1900 • [www.sourcecompanies.net](http://www.sourcecompanies.net)