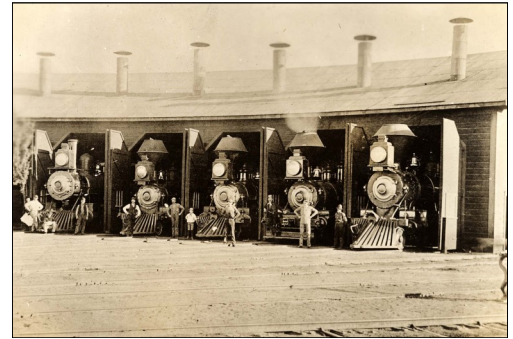


What do you know about the Chinese and the building of the Transcontinental Railroad?

Answer at least 8 questions to claim a prize. When you are done, submit your scavenger hunt by Oct. 23 to staff at the Rocklin Library, 4890 Granite Drive (at Rocklin Road) or a docent at the Rocklin History Museum, 3875 Rocklin Road (at San Francisco St.).



Find in the books:



1. When and where did construction on the Central Pacific Railroad start?

When did it connect with Union Pacific's rail line? _____

2. About how many Chinese construction workers were employed by the Central Pacific Railroad to work on the eastbound leg of the Transcontinental Railroad? _____

3. What event happened in June 1867 while crews were digging tunnels at Donner Summit?

Find at the library

4. In the railroad diorama, there's a church at the end of Front Street. In 2005, it was moved and restored.

What is the church's name? _____

5. List the title of a book on the history of the Transcontinental Railroad.



6. What is the name of the novel by French author Jules Verne that references both the Transcontinental Railroad and Rocklin, CA? _____

Find at the Museum

7. Many of the Chinese workers settled in Rocklin following the completion of the railroad in 1869. By 1877, Rocklin's Chinatown consisted of 25 housing units. On the map that shows where they were located, identify the location of the settlement. _____

8. Why were the Chinese forced to leave Rocklin in 1876? _____

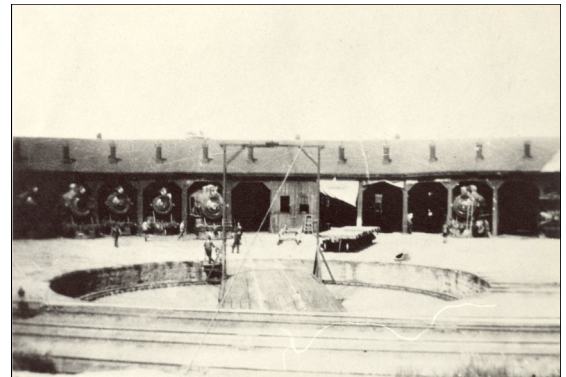


9. Sixty years later, in 1936, a prominent Chinese businessman purchased the house that would become the Rocklin History Museum. Who was he?

This person's son was a celebrated Alamo Scout during WWII, conducting dangerous missions behind enemy lines in the Philippines. He also was a prominent baseball player and manager and was inducted into the Roseville Area Baseball Hall of Fame in 1967. What is the son's name? _____

Find at the roundhouse site

10. Locate the replica of the turntable in Heritage Park. What was its original purpose? _____



11. Only half of the roundhouse was turned into a rose garden. Find where the rails are used to show the bays. How many bays are visible? _____

How many bays do you think were in the original roundhouse? _____

Bonus: Take a selfie and post a picture or comment either on

www.facebook.com/rocklinhistory or
www.facebook.com/RocklinFriends

After the Chinese were forced to leave Rocklin in 1876, about 1,000 were hired by entrepreneur Joel Parker Whitney to live and work on his ranch. The expelled workers built numerous water courses and stone fences at his ranch. One of the 12 granite bridges is located at Clover Valley Park on Midas at Clover Valley Road.



Stone fences crisscrossing Whitney's ranch were built by Chinese workers

A historic plaque marks the location of Joel Parker Whitney's now demolished three-story, 20 room Oaks mansion. The plaque is in front of a private residence at the end of Knoll Court in the Mansion Oaks neighborhood.