



Safer Southern Rail Route

Manistee Community Presentation

606
TOTAL NUMBER OF
ESTABLISHMENTS

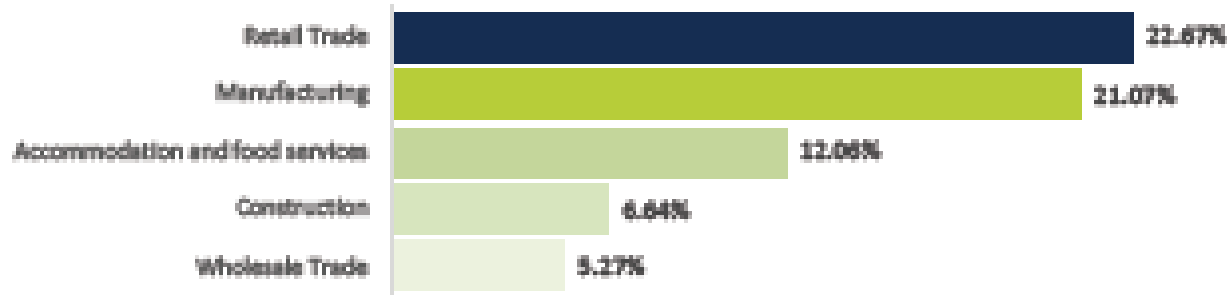


4,213
TOTAL NUMBER
OF JOBS



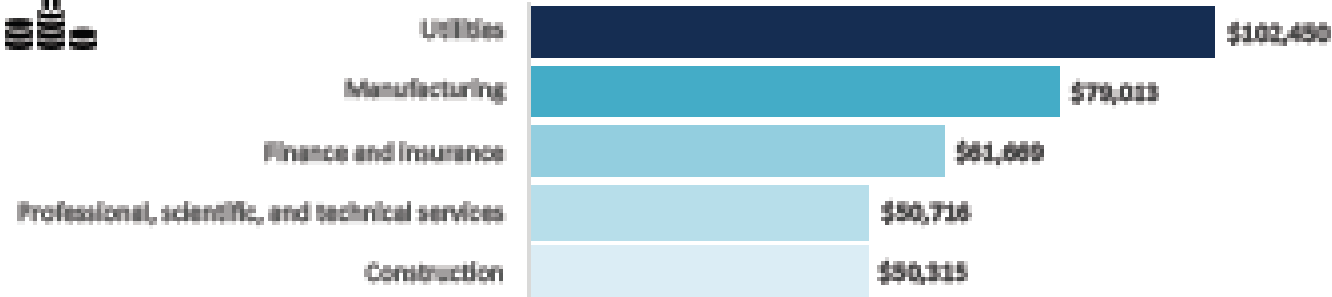
TOP 5 INDUSTRIES IN COUNTY BY EMPLOYMENT SHARE

BUREAU OF LABOUR STATISTICS (BLS)



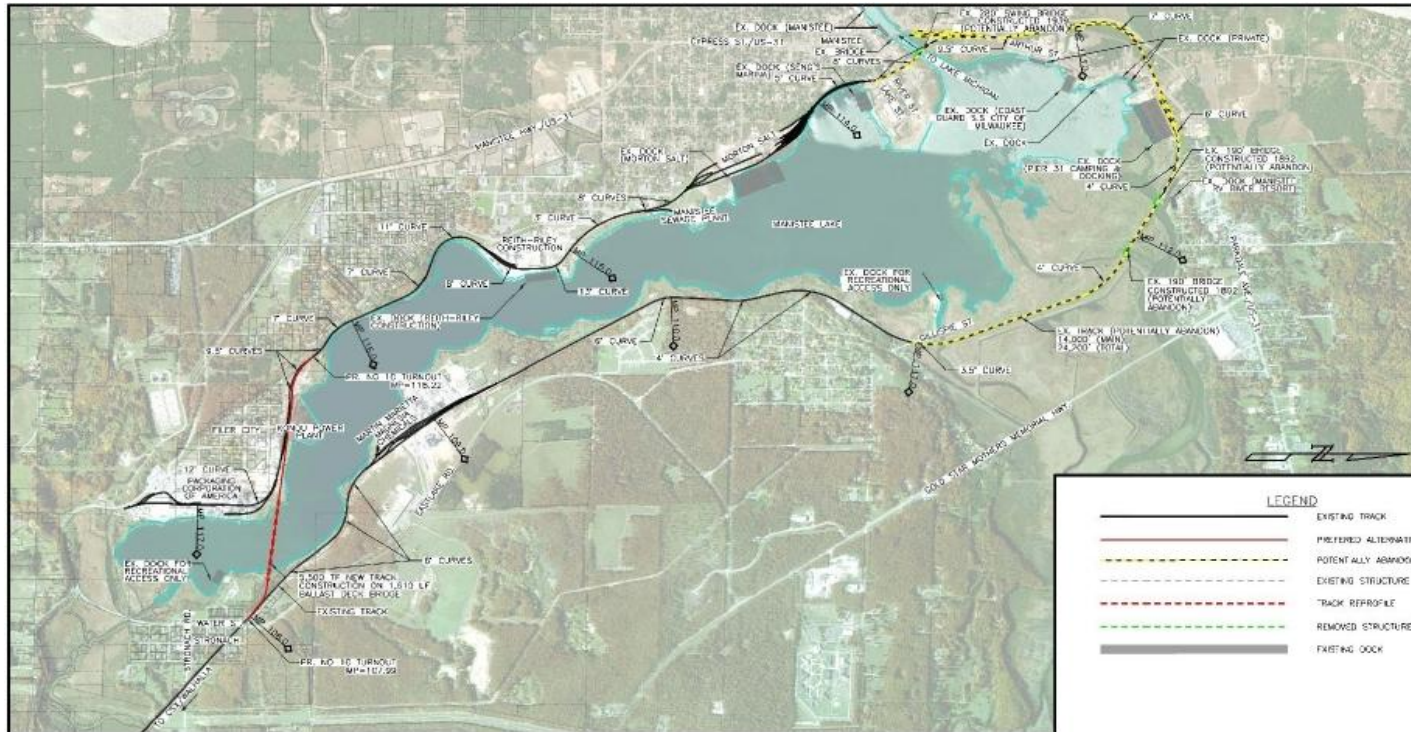
TOP 5 INDUSTRIES IN COUNTY BY PERIODIC WAGE

BUREAU OF LABOUR STATISTICS (BLS)



Goals

- Safer Southern Railroad Route (SSRR)
- Eliminates (8) RR crossings = (2) US-31 Hwy, (3) local streets & (3) marine
- Nearly 10-mile shorter routes (x4 daily @ 48 min. each way)
- 22.5 hrs./daily cumulative traffic delays vs Alt. 1 bridge 0.5 hrs. delay
- (1) new lake crossing bridge Builds supply-chain competitiveness to maintain & grow industry **(21% of employment)** by investing in essential infrastructure
- Best Route design environmentally, economically and for enhancing community



	Alternative 1
Bridge Length	1,570 feet
Spans	16
Vertical Clearance	10-12 feet
Bridge Width	20 feet
Total Girders	80
Reinforced Steel (lbs.)	500,000
Piles for Piers	90
Pile Abutments	9,000

DEVELOPMENT STAGES

IMPLEMENTATION STAGES



- Multi-state Regional Planning
- Corridor Planning
- Project Identification

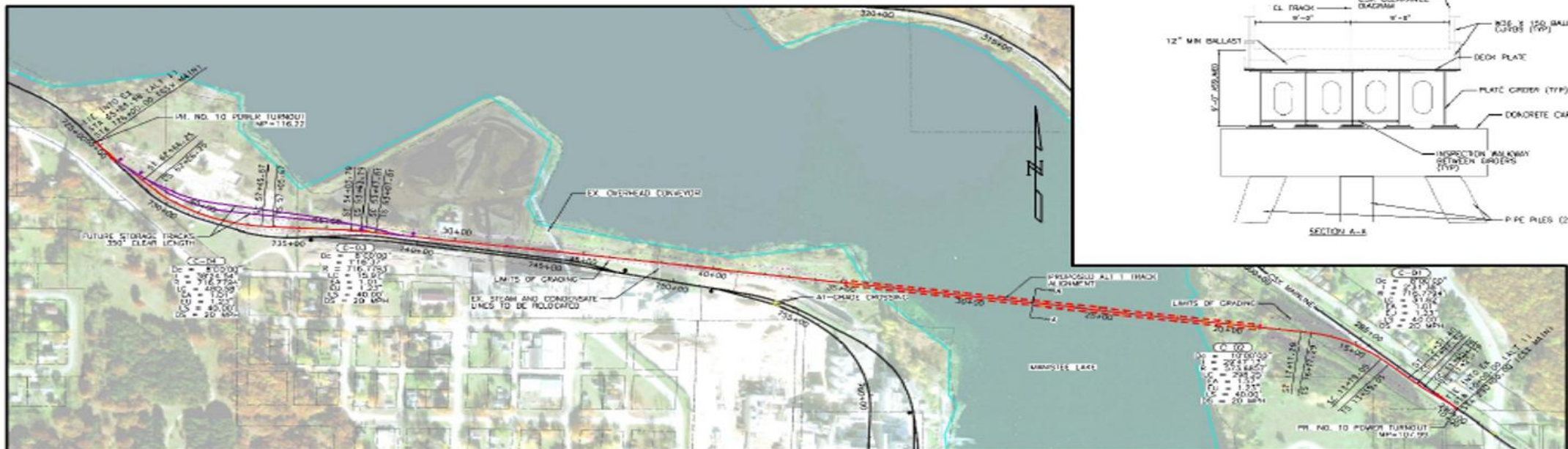
- Purpose & Need
- Project Planning
- Conceptual Engineering
- Consideration of alternatives
- Stakeholder Engagement

- NEPA
- PE
- Cost Estimate
- Budget and Schedule
- Project Management Plan & Financial Plan
- Procurement Strategy
- Stakeholder Agreements

- Final Engineering
- Final Budget and Schedule
- Procurement Process
- Project Agreements
- Refined Project Management Plan & Financial Plan
- Right-of-Way Acquisition
- Early work and Relocations

- Capital Construction
- Equipment Acquisition
- Utility Construction
- Financing Costs
- Construction Oversight
- Testing and Commissioning

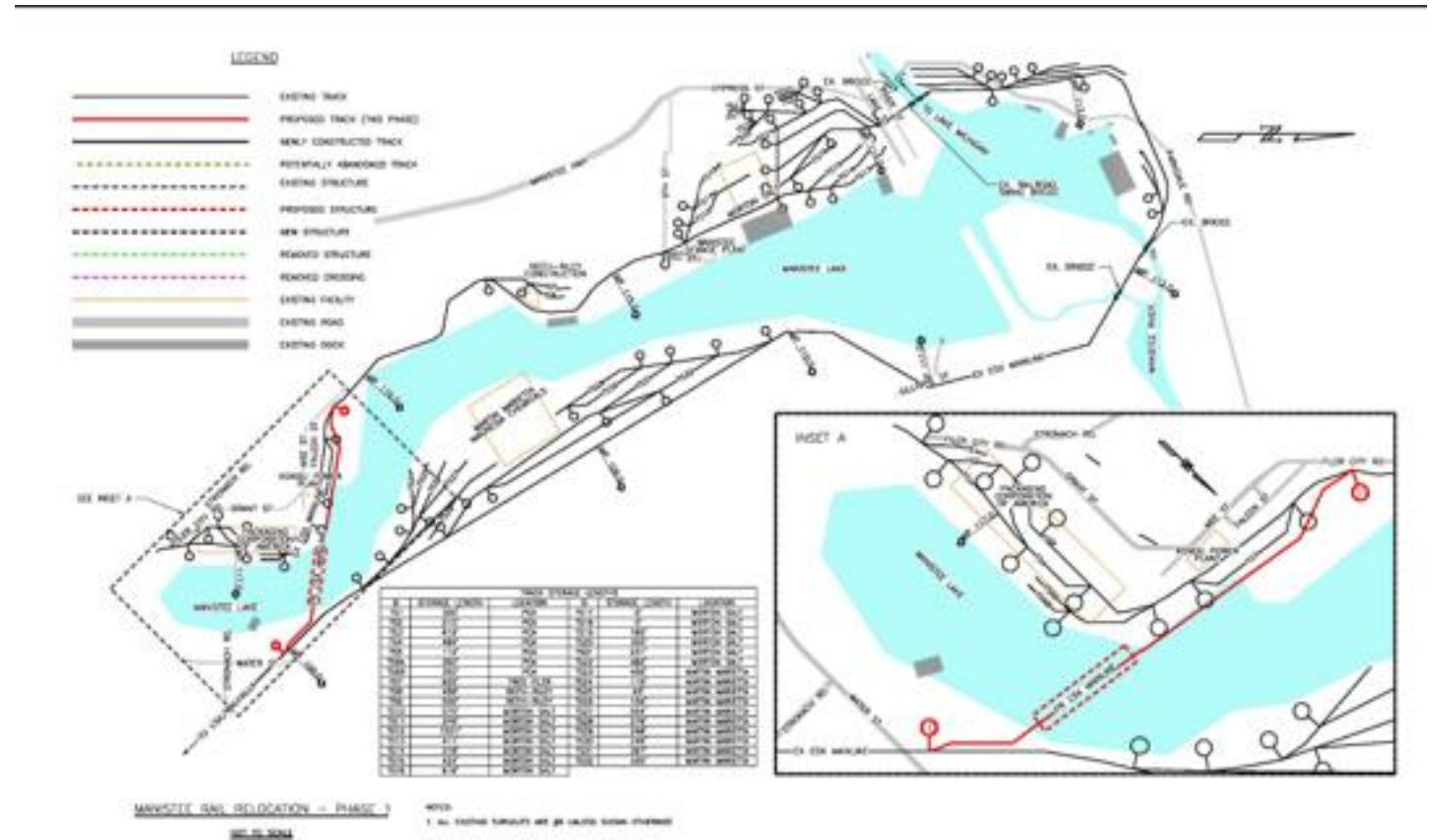
- Project use
- Project Benefits Assessments
- Project Lookback Analysis



Next Phase: National EPA (NEPA) & Preliminary Engineering

- Stronach Park .3 miles south of proposed bridge
- Ground Disturbance of Archeological & Historic Artifacts
- Habitat disruption 1.2 wetland acres
- General Noise & Vibration Study

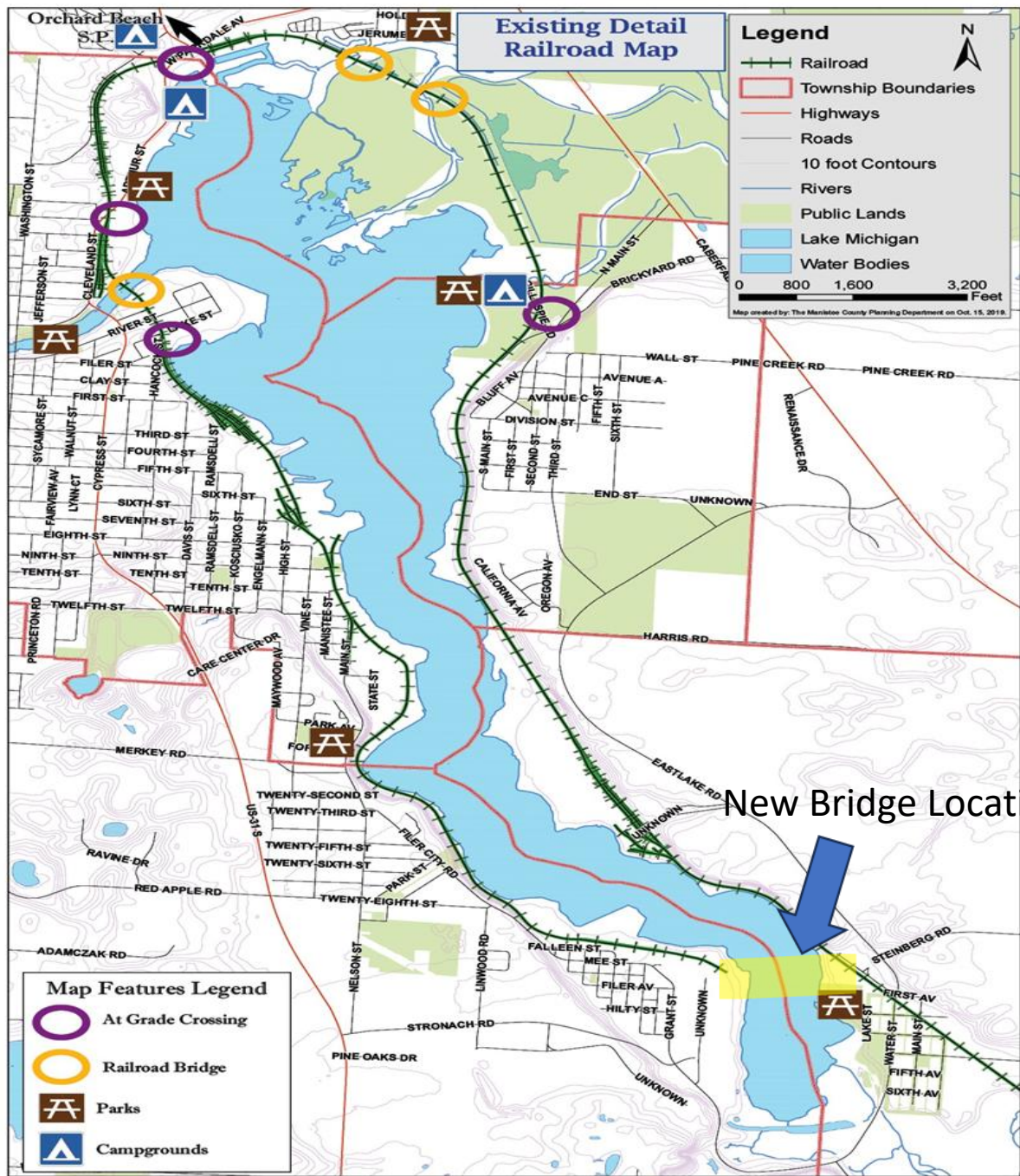
Noise Receivers	Category 1: High Sensitivity	Category 2: Residential
*Alternative 1	0	36
*Alternative 2	0	64
*Alternative 3	0	95
**Potentially Abandoned Rail Track/Crossings	0	293



Key Considerations	Alternative 1
Route Distance and Area (Miles/Acres)	0.97 / 4.73
Parcel Count (Private/Public)	11 / 1
Parcel Area (Total Acres)	3.5
Wetlands	1.2 acres
Waterways	58 feet
Floodplains	1.3 acres
Waterbody	1.2 acres
Historic/Cultural Resources	Lowest potential
Hazardous Materials Sites	5 sites total
Noise / Vibration Receivers	37 / 5
At-Grade Crossings	4
2025 / 2045 Daily At-Grade Crossing Delay (hrs.)	0.50 / 0.62
Bridge Cost Estimates	\$60 Million
Capital Cost Estimates (includes bridge costs)	\$128.4 Million

Opportunities

- It's about the next 100 years of manufacturing jobs, environment & quality of life (train horns near residential downtown sometimes 4x day)
- Plan aligns with the State of Michigan Rail Plan
- Obviously, economic opportunities for residents near railyards and remediation of contaminated yards
- Consumers Energy has met with City Officials about potential recreational lease opportunities for the 12 acres adjacent the lake and channel



From Penny Park to the new Gateway Hotel Development Downtown - rails-to-trails potential

Consumers Energy long-term lease potential for recreational use of adjacent downtown waterfront

CSX owns the right-of-way along US-31 Hwy & Arthur St. for sale and potential commercial development

11.4 acres

8.5 acres





Safer Southern Rail Route

Manistee Community Presentation

For further information visit website @
<https://manisteerailproject.com/>

Or email questions to Bill Kennis Grant Administrator
Bkennis@manisteecountymi.gov