



# WELCOME BOOK

## WELCOME TO TIN ROOF FARM

We love this place! We hope that you too will love your Tin Roof experience and take a bit of the peace, joy, and beauty with you in all your travels!

*Michelle & Carl*

Owners Tin Roof Farm

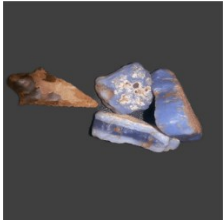
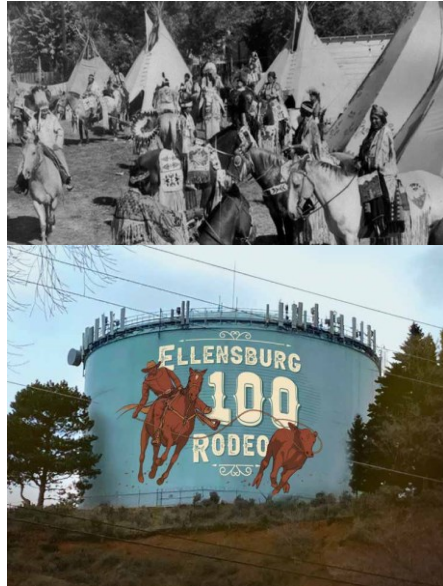
# TIN ROOF FARM HISTORY

## Experience an ancient gathering place

Once called the Great Council Ground, this area hosted an ancient gathering place where tribes would meet for trade, healing, and connection. People then, like today, came to hunt, fish, and fellowship.

Eastern Washington, Oregon tribes, as well as Western Idaho, and Montana tribes made the journey to this special place. Horse racing, games, and celebrations abounded. Music was played and songs were sung with hundreds of indigenous people in attendance.

Today, in Ellensburg, the gathering continues. Here, you can enjoy wine tasting, rodeo, and recreation. It's all part of our community fiber, along with country charm, friendly smiles, and hospitality!



Tin Roof Farms, itself, shares this vibrant past and connection to nature. Walking the grounds you might find an Indian arrowhead, a rare and valuable Ellensburg blue agate, petrified wood, or encounter dozens of species of birds and wildlife. The barn that once housed racehorses which ran the track of Emerald Downs, displays relics of historic inhabitants and items they left behind.



Today, our honeybees pollinate the organic fields of fruits, vegetables, and flowers. Wine, mead, honey, and other farm fresh products are available in the tasting room. Guests can grab a picnic lunch and enjoy mountain views at the farm or take it to go with a bike rental for a ride in the fresh country air. Ellensburg is the start of wine country. Grab a map and tour the local wineries, breweries, and cyder houses in the area.



Stage your recreation vehicles or animals before your Colockum adventures. Or plan a float trip down the stunning Yakima River. Then come back to retire in the beautifully equipped industrial guest farmhouse with private back yard, chemical free hot tub, sweeping views, stunning sunsets, and a chance to rejuvenate body and soul.



# Tin Roof Farm Camping

## **COST**

Camping is \$20/night

## **CHECK IN / CHECK OUT**

Check in any time after 9AM the day of your reservation. Check out between 9 and 11 AM.

## **PARKING**

RV and vehicle parking is South of the Tin Roof Barn(s) Through the gravel driveway. Please keep all vehicles on the path!

Tent camping is available on the North and South lawns

## **WARNING**

This farm hosts an active apiary with live and busy bees! They are situated on the southmost part of the South lawn. We also encourage pollinators on our farm which include some stinging bee species. If you have allergies or are concerned about the presence of bees please be very cautious!!!

## **DRY CAMPING**

Our farm hosts dry camp sites only. There are some outdoor electrical outlets available. See host before plugging in.

## **WATER STATIONS**

There is a water station located under the flag poll.

## **RESTROOMS**

There is a rest room located in the back of the Tin Roof Barn in the "Tack Room" sauna it is also labeled the "Out House". It has an off grid, composting toilet, sink, and sauna. The sauna is kept locked for safety and insurance reasons. If you are a guest of Tin Roof and would like to use the sauna, please contact your host.

**Smoking/vaping:** There is NO SMOKING or VAPING (tobacco, cannabis, e-cigarettes, etc. ) allowed with the exception of the fire pit area. This is for serious safety reasons. We often experience sudden high winds that can pose a high-risk fire danger!!!!

**Noise:** Please limit noise after 11PM and be considerate of others on the property at other times

**Cleanliness:** Pack it in, pack it out, please. We do have a garbage receptacle at the front of the main house.

**Pets:** We ask for a \$50 deposit per pet and that you please utilize dogie-doo bags unless your dog is running free in the back acreage. Do NOT allow your pets in the ponds and gardens or you will be asked to leave without your deposit.

**Commercial film and photography:** This is a great place for pictures!!! However, we ask that if you plan to film or photograph for commercial use or profit that you ask for documented permission from the Host.

**If there is an issue:** Your host is available via text or phone at 425.870.4123

**For emergencies:** Police, Fire and EMS (Remember: In an Emergency, Dial 9-1-1) Ellensburg Police Business Office: 509-962-7280 M – F 8 a.m. - 5 p.m. Animal Control Business Office: 509-962-7246 Monday – Saturday After Hours: 509-925-8534 (KITTCOM) Kittitas County Fire and Rescue Office: 509-933-7230 M – F 8 a.m. - 5 p.m.

# Tin Roof Farm Guest House



*Guest house stay \$125/nt.*

Welcome to your home in the country. A charming one queen bed/ one bath rustic industrial guest farmhouse with so many extras.

- You are greeted with fresh baked goods, organic fruits, and coffee bar
- Guest house Sleeps 5.
- Bedroom boasts a Queen bed with premium organic bedding
- There is a pull-out king in living area
- Large, equipped kitchen with full oven/range and refrigerator but also espresso machine (coffee provided) air fryer, waffle maker, blender, toaster oven and other extras. Your cooking implements, spices, and much more are already there.
- Dining area, complete place settings
- ADA compatible with easy access and large navigable spaces
- Private carport, ample additional parking, staging for recreation vehicles, and animals.
- Private picnicking and outdoor sitting areas
- Acreage for grazing animals & pets
- Free Wi-Fi and dedicated office area in unit
- Cozy gas stove and portable air conditioning for your comfort
- In unit entertainment including games, puzzles, movies, toys, books
- Two televisions include a big screen TV in living area and bedroom
- Serene private back yard with deck and private barbeque
- Private hot tub without harsh chemicals utilizing natural water care
- Non-toxic laundry services available
- Non-toxic cleaning includes UV & Steam sanitization of entire unit
- Amazing views surround you from the guest house and the grounds
- Kids welcomed and Pet friendly (added pet deposit required thank you)
- Lovely grounds to walk Free - borrow a bike to explore the countryside
- Take a look at some of the [things to do](#) both on and near the farm

CHECK AVAILABILITY at [WWW.TINROOFFARM.US](http://WWW.TINROOFFARM.US) or call 206.451.7050

# Tin Roof Guest House Guide

Welcome to your home in the country, a place to gather with family, loved ones, and friends.

## **CHECK IN**

**Check in / check out:** Check-in is 3:00 PM contact us as we can sometimes provide check in **as early as 1:00 PM** /  
Checkout **time** is 11:00 AM

## **UPON ARRIVAL**

**Parking:** Your private, covered parking space is directly in front of the guest house main entrance. If for any reason the space is occupied, feel free to park anywhere in the parking area.

**Entering:** You will have received a code or key for the front door. Please be mindful that winds can be fierce! IT IS IMPORTANT TO HOLD THE SCREEN DOOR VERY, VERY SECURELY and shut it very securely!

**Sleeping arrangements:** The main bedroom hosts a queen bed; the living room has two lounging couches. The black couch pulls out into a king size bed. There is bedding, pillows in the couch lounge storage area along with extra blankets.

We try to utilize natural bedding choices and as organic as possible. There is also extra bedding in the bathroom linen closets.

**IN ROOM ENTERTAINMENT:** We've provided games, toys, books, a DVD library and player, as well as two internet-connected TVs. The DVD player requires that you switch the tv to HDMI 1 via the remote, open and insert a disc, then press the play button.

**ENJOYING THE GROUNDS:** This is a working farm and while we welcome you to explore, please be a thoughtful guest. Do not trample gardens, plants, or ponds. Stay on pathways (where available). And WATCH YOUR STEP! There are cobblestone pathways that are uneven, the ground in the lawns can be uneven, rocks can be loose. Please stay on pathways and do not disturb the foliage!!!!

**If there is an issue:** Your host is available via text or phone at 425.870.4123

**For emergencies:** Police, Fire and EMS (Remember: In an Emergency, Dial 9-1-1) Ellensburg Police Business Office: 509-962-7280 M – F 8 a.m. - 5 p.m. Animal Control Business Office: 509-962-7246 Monday – Saturday After Hours: 509-925-8534 (KITTCOM) Kittitas County Fire and Rescue Office: 509-933-7230 M – F 8 a.m. - 5 p.m.

**OTHER:** You will find umbrellas, yoga mats, and binoculars by the front door.

**Smoking/vaping:** NO SMOKING or VAPING allowed in the guest house. Smoking is best done at the fire pit and the parking area. We can experience sudden high winds that can pose a high-risk fire danger!!!! This includes the use of tobacco, cannabis, e-cigarettes, etc.

**Noise:** Please limit noise after 12PM and be considerate of others on the property at other times

**Cleanliness:** Please do not leave the home in a state that requires excessive or deep cleaning (moldy dishes, soiled carpets, stains from pets, etc.). Cleaning fees are only meant to cover the cost of standard cleaning between reservations (laundry, vacuuming, etc.).

**Litter:** Please use trash receptacles provided. At the end of your stay, put all the litter in a large bag (provided) and leave it in the kitchen area or leave garbage in the can at the front of the main house.

**Visitors:** You may wish to have a small gathering while you stay but please be mindful of others at the farm and any events held there. If you wish to utilize areas other than the guest house for a gathering, you will need to speak with the host. Disruptive gatherings are always prohibited.

**Pets:** We ask for a \$100 deposit per pet and that you please utilize the doo-doo bags near the guest house entry unless your dog is running free in the back acreage. We have also provided a doggie towel to wipe your pet off after playing outside. It is placed near the main entry. Do not bring more pets than are approved or fail to inform the host about any pets brought inside the home. Note that service animals are not considered pets. And as a courtesy to other guests please do not allow your pets on the furniture.

For those with pet sensitivity, we take great care to steam, UV sanitize, and remove allergens prior to your arrival.

PLEASE DO NOT ALLOW YOUR PETS TO RUN FREE (unless in the fenced back acreage) do NOT allow them to run in the ponds and gardens, flowers, vineyard, etc. If they do you will be asked to leave. Thank you.

**Commercial film and photography:** This is a great place for pictures!!! However, we ask that if you plan to film or photograph for commercial use or profit that you ask for documented permission from the Host.

## **CLEANING**

Your cleaning fee covers the usual cleaning and sanitization of the unit. We do not provide daily maid services as part of your rental, but we can provide mid-stay cleaning services for an extra charge of \$50. This includes full cleaning of the unit, bedding, refreshing of towels, and kitchen/dishes.

We can also provide laundry services (non-specialized and non-dry cleaning) for \$30/load. We use all natural, organic cleaning products. There is a laundry center in Ellensburg at 203 W Washington Ave, Ellensburg, WA 98926 as well.

You are not required to wash all of your dishes before you leave but we do ask that you wash out and soak any pots or excessively soiled dishes.

Please contact your host for these services 425.870.4123

## **THE KITCHEN**

The kitchen is stocked with cooking essentials. There are condiments in the refrigerator and other food items, storage bags, and plastic storage in the cupboards. We encourage guests to use what is there, replenish if you can, and you are welcome to leave your unused items for future guests.

We have provided cleaning supplies under the sink. There are extra cleaning supplies in the maid's closet (the large, wooded closet in the center of the unit).

We can provide mid-stay cleaning services that includes full unit cleaning and dishes at a charge of \$50


### **APPLIANCES**

On the counter you will find a microwave, small toaster oven, and coffee/tea maker. In the lower cupboard left of the sink, you will find an electric tea kettle, crock pot, air popper, blender, waffle maker. On either side of the range are bakeware and cookware. (we've included instructions on using the coffee maker)

## COFFEE / TEA BAR

There is Tin Roast French blend coffee in the machine ready to brew and decaf pre-ground on the counter for the French press. Additionally we have provided a k-cup machine.

You will find a coffee grinder and French press in the cupboard underneath the coffee machine. Teas, condiments, and reserve coffee are in the cupboard above the machine.



**START IT UP**

1. Make sure the catch tray at the bottom is slid all way in. Do not slide out during operation.
2. Make sure the big silver selector in the center is in the ● position.
3. We've filled the machine with fresh water and coffee but, if you run out. Fill the water tank but do not exceed the MAX
4. The coffee hopper is on top. It is filled with fresh Tin Roof Roasted caffeinated coffee. There is a hole near the beans for ground coffee of your choice.
5. Make sure the machine is turned on (switch near the plug in)
6. The power button on the front of the machine may be blinking red. Press it once AND WAIT!  
It is going to get itself set up and prime. Keep the small pitcher in place as the machine pumps a little water through.
7. Discard the prime water and get ready to brew!

**HOW TO OPERATE THE COFFEE MACHINE:**

For your best Tin Roof coffee experience, we've provided a machine that will make a delightful cup of espresso, latte, Capuchino, tea (there is also an electric kettle in a cupboard left of the sink), and more. Follow the steps to a great



Espresso button (short brew)      LED Display      Power button  
Long brew for bigger cups of coffee      Coffee select switch  
Hot water or steam select

**~ NOW LET'S START BREWING! ~**

**FOR ESPRESSO:**

1. Use the power button to select the strength of your coffee shot. One bean in the LED display is weakest, two is medium, three beans is strongest. The spoon is for pre-ground coffee which is placed by teaspoons in the opening in the coffee hopper.
2. Keep the Hot water switch centered on ●. Press the Espresso button. Wait for it to "do its thing". If you want a second shot, press the espresso button again, after the first shot is complete.

**FOR REGULAR COFFEE:**

1. Use the power button to select the strength of your coffee. One bean in the LED display is weakest, two is medium, three beans is strongest. The spoon is for pre-ground coffee which is placed by teaspoons in the opening in the coffee hopper
2. Press the long brew button once. When the machine has brewed, press again if you want to fill your cup more. A regular cup takes about 3 "long shots."

**FOR STEAMED MILK:**

1. Pour milk (no more than 3/4 full) into the steam pitcher that rests below the steam wand.
2. Turn the hot water/ steam switch to the left for steam.
3. Steam the milk to your desired temperature/ froth.
4. Turn the selector switch back to ● or center position.

**FOR HOT TEA:**

1. Place your cup or steam pitcher under the steam wand.
2. Turn the hot water/steam selector to the right for hot water.
3. Turn the selector switch back to ● or center position when finished.

## HOT TUB

The hot tub in the back of the guest house is for guest house guests only.

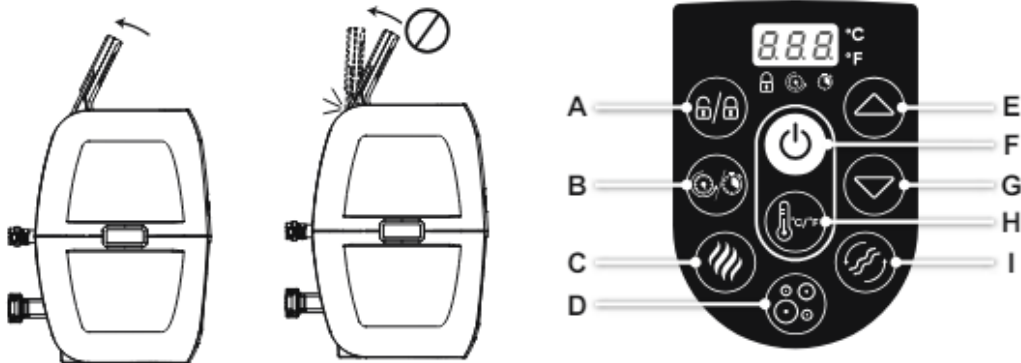
Your hot tub is on the back deck and boasts amazing sunsets and views. It can take 10 hours to completely heat the tub. You can ask your host to turn it on before arriving if you plan to use the tub.

NOTE: The bubbles and the heat do not operate at the same time.

**WARNING** - Please do not sit on the sides of the tub, it is not designed for that!

**WARNING** – The use of alcohol, drugs, or medication can greatly increase the risk of fatal hyperthermia.

**WARNING:** WATER TEMPERATURE IN EXCESS OF 100°F(38°C) CAN BE INJURIOUS TO YOUR HEALTH.




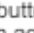



**A. LOCK/UNLOCK BUTTON:** The pump has a 5-minute auto-lock, this light will turn on. To lock or unlock the pump, place a finger over the lock/unlock button for 3 seconds.

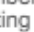

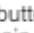
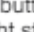
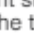



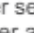
**B. POWER-SAVING TIMER BUTTON:** Designed to help avoid wasting power by setting the time and duration of the heating cycle for the spa. This way, you can enjoy your spa at the time you desire, without needing to leave the heater on at all times.

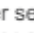
### STEP 1: Set the heating duration

1. Press the  button until the  LED starts to flash.
2. Press the  or  button to adjust the heating duration (From 1-999 hours).
3. Press the  button again to confirm the heating duration.

### STEP 2: Set the number of hours FROM NOW when the heater will activate

1. After setting the heating duration, the  LED starts to flash.
2. Press the  or  button to adjust the hours until time of activation (From 0-999 hours).
3. Press  button again or simply touch nothing for 10 seconds to confirm the setting. The  LED will light steadily, and the countdown to heater activation will begin.

To modify the timer settings: Press the  button and use the  or  button to adjust.

Cancel the setting: Press the  button for 2 seconds.

NOTE: After setting, the screen flashes the current temperature and time alternately.

NOTE: Timer adjustment (amount of time with the heater ON) may be set from 1 to 999 hours; Reservation time adjustment (the number of hours FROM NOW when the heater will begin to function) may be set from 0 to 999 hours. If the timer is set at 0 hour, the heating system will activate immediately.

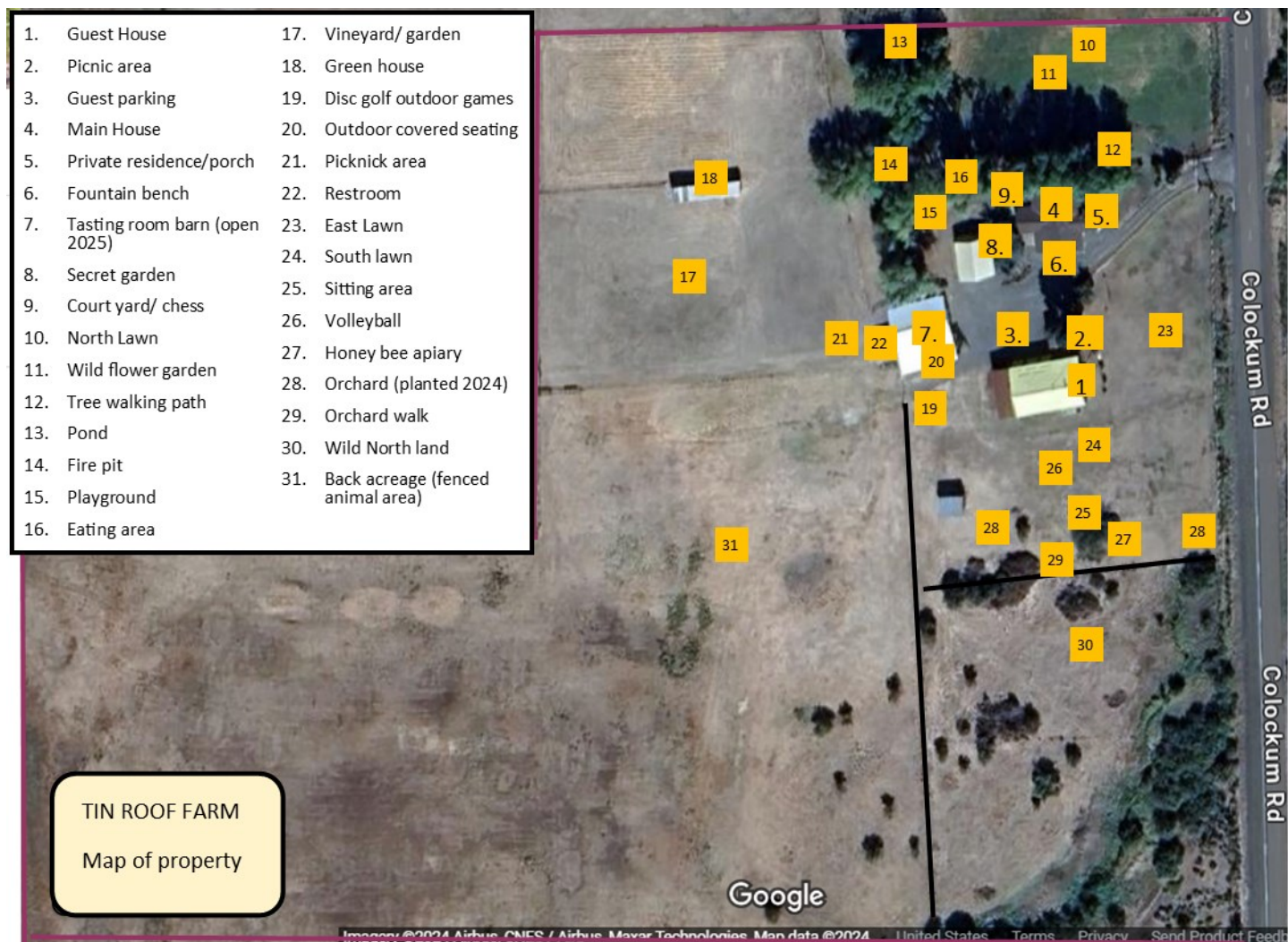
Note that the timer is one time per use - the user sets the duration of the heating cycle, and how many hours from now the heating cycle begins. The timer does NOT repeat until reset.



**C. HEAT BUTTON:** Use this button to activate the heating system. When the light above the heat button is red, the heating system is activated. When the light is green, the water is at the set temperature and the heating system is at rest.

# GETTING AROUND

Below is a map of the farm. Please be mindful of others, private areas, and gardens:



## THINGS TO DO ON THE FARM

- Stroll the acreage there's many places to walk about.
- Discover the secret garden
- Camp out under the stars or retire at the guest house
- Book a massage (coming soon)
- Take a class on bees, dance, cooking or art (based on availability)
- Host a celebration
- Enjoy the pond or sit and watch the wildlife
- Classify the dozens of bird species
- Watch the sunset from the loveseat tree
- Nibble on organic fruits and vegetables from the gardens
- Picnic on the tree covered lawn or at one of the many picnic areas on property
- Search the grounds for arrowheads, petrified wood, or rocks like the Ellensburg Blue Agate
- Play at the playground
- Pan for gold in Tabby's stream (seasonal)
- Pick flowers for a bouquet
- S'mores by the fire pit
- Enjoy drinks and foods in the tasting room (coming soon)
- Find a quiet place for yoga, meditation, and prayer
- Try your hand at old fashioned wooded games
- Watch a movie or catch the game at the tasting room or outdoor theater
- Volunteer for farm work
- Play volleyball, croquette or frisbee golf
- Celebrate special days
- Rent a bike and explore the countryside

## GETTING HERE & GETTING AROUND

The farm is in Ellensburg and is less than 20 minutes Off of Washington's I-90 on the historic Colockum Rd.

You don't need a tractor but to best experience the countryside requires a car or truck. Driving on USFS roads and the beautiful Colockum pass can present very rocky, unpaved roadways. A 4 wheel drive, ATV, Horse, or mountain bike is best.

Downtown Ellensburg has bus service: <https://centraltransit.org/>, [Uber](#), [Lift](#), Taxi, [Turo](#), and other rental services are available to and from the farm (Google or ask your host for more information)

**BIKE RENTALS** We usually have bikes and helmets and flags (for safety and visibility) available. The rental fee is \$15/hr. We've included below some biking routes to enjoy in the area.

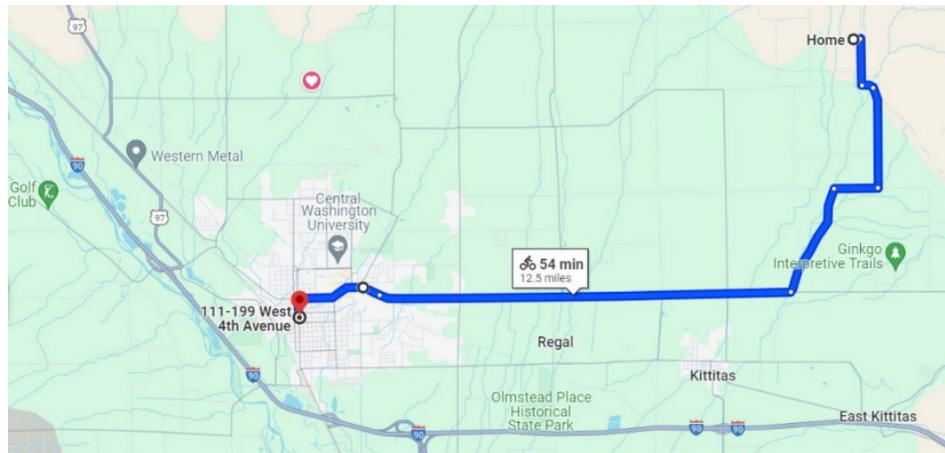
## Biking or walks around Tin Roof

### LOCAL ROUTES

There are two bike routes that we recommend around the farm to view beautiful landscapes and experience the countryside. We've provided bike flags for your protection to alert drivers of your presence. Speed limits on some of these country roads are 50 MPH, and vehicles are known to travel much faster. PLEASE be watchful and obey road rules. Also be mindful of windy days in the valley where gusts of wind can make your ride a little unstable.

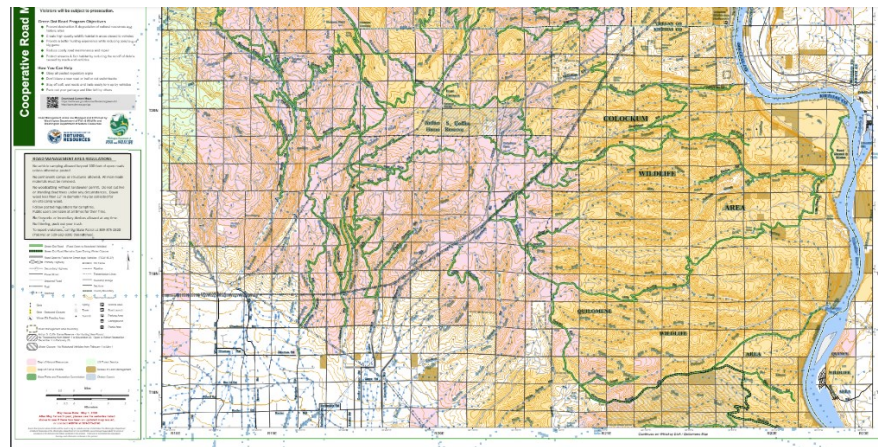


**BIKING TO TOWN** It is about 15 miles to downtown Ellensburg. You will travel on mostly flat roadway for about an hour travel time by bike. Travel south on Colockum, turn left on Brick Mill Rd. to Venture, right on Lyons, Right on Caribou, and straight on the Vantage Hwy until it turns to University. There you'll be near the fairgrounds and can travel on University to Main Street (then turn left) which will take you to the downtown area.



### **MOUNTAIN BIKING and ATVing**

Colockum Road, just North of the farm, is an experience of 29.3-miles of out-and-back trails. It is the old trade route from Ellensburg to Wenatchee. Generally considered a moderate to challenging route. It becomes extremely rocky for bikes, trucks, and ATVs. This is a popular trail for birding, mountain biking, and off-road driving, but you can still enjoy some solitude during quieter times of day. The best times to visit this trail are March through October. Late fall through spring can make roads there unpassable with snow. Dogs are welcome but must be on a leash. This route is not well groomed and not suitable for street bikes.



# Things to do nearby

Find links and more information on these adventures at [www.tinroofarm.us](http://www.tinroofarm.us)

- Bike the [Palouse to Cascades State Park Trail](#) , the nearby countryside, or many other [trails](#)
- Go on a [Wine, brew, and cider](#) tastings and tour
- Find a [local event](#)
- Check the exterior of local artist's home [Dick & Jane's spot](#)! It's unique!
- Try [Fly fish](#)
- [Golf](#)
- Play a game of pool at the nearby Time Out Saloon 101 Main St, Kittitas
- Pontoon, jet ski, kayak, SUP, and snowmobile [rentals](#) in nearby Cle Elum
- Either a [guided](#) or [DIY](#) river tubing adventure
- Go [paddleboarding, kayaking and canoeing](#)
- Get wet at a [lake or river](#)
- [Horseback ride](#)
- Enjoy winter activities and [play](#)
- [Rock hounding](#) is a thing here
- [Axe throwing](#)
- [Jensen Farm](#) fun for the whole family with petting farm and events
- Hike the [Uptamum Canyon Trail](#)
- Take in the [music scene](#)
- Explore quaint [downtown Ellensburg](#)
- [Take a scenic drive](#)
- Discover nearby [art galleries](#)
- Connect with history at [historic sites](#) and [museums](#)
- Visit [Olmstead Place Historical State Park](#) one of the 1st homesteads in the valley.
- Venture through [Ginkgo Petrified Forest State Park/Wanapum Recreation Area](#)
- Zen out at the [CWU Japanese Gardens](#)
- We're a top destination for [bird watching](#)
- Gather [wildflowers](#)
- Explore the [Colockum wildlife area](#)
- Take in the [farmer's market](#) May - Oct.
- Kittitas County [Barn Quilt Trail](#) features more than 100 painted quilt squares on barns from Roslyn to Ellensburg.
- [Wild Horse Wind and Solar Facility](#) has 149 wind turbines and 360-degree views and a very nice free guided tour.
- Get our recommendation for fantastic [places to eat](#).
- Picknick at a [park](#)
- Family swim and fitness time at the [Memorial pool & fitness center](#)
- [Kittitas Valley events center/fairgrounds](#) hosts many events.
- Don't forget our world famous [rodeo](#)

# Places to eat

Here are some of our favorites:



Kittitas Café' this nearby coffee house/cafe serves breakfast and lunch 301 N Main St Kittitas WA 98934



Bruce's & Ellensburg Pasta Co. – Both of these are really tasty, owned by the same people, and a good value. They are adjacent to each other on 600 N Main St, Ellensburg 1 509-933-3330



[Canyon River Grill](#) for very nice dining 14706 Canyon Rd | Ellensburg, WA 98926



[Daily Bread & Mercantile Inc.](#) a favorite place locals meet for lunch! Fresh, Homemade sandwiches and soup; and a loaf of their Daily Bread for home 306 S. Main St. | Ellensburg, WA 98926 509-925-2253



[Julep](#) Our favorite spot for it's Southern Kitchen & Cocktail Bar located in downtown Ellensburg, WA 429 N Main St, Ellensburg, WA 98926 509-201-1282



[La Santa Mexican Cuisine](#) La Santa Mexican Cuisine, was built in 1923 as a church for the German Lutherans this is a really good place for Mexican food 111 S Pearl St. | Ellensburg, WA 98926 (509) 933-2233



[Fidelina's Taqueria](#) 119 W 5th Ave | Ellensburg, WA 98926 (509) 962-2347



[Sugar Thai](#) Nice presentation and flavors! yum 306 N. Pine St. Ellensburg, WA 98926 (509)933-4224



[Campus U-Totem](#) – An old fashioned drive in 810 East University Way | Ellensburg, WA 98926 (509) 925-1600



[Red Horse Diner](#) is a fun American diner and a throwback to o the fabulous rockin' fifties 1518 W. University Way | Ellensburg, WA 98926 (509) 925-1956



[The Palace Cafe](#) Serving Ellensburg and its visitors for over 100 years recommended for breakfast. 323 N Main St. | Ellensburg, WA 98926 (509) 925-2327



[The Pearl Bar & Grill](#) really good food and drink! 402 N Pearl St | Ellensburg, WA 98926 (509) 201-1042



[Winegar's Ice Cream and Coffee](#) a local favorite for ice cream and coffee 1013 E University Way and 111 E University Way (509) 933-1821

## Wine & Brew experiences

- Brix Wine Bar is a family-owned restaurant and wine bar - 109 W 3rd Ave [\(509\) 933-2749](tel:5099332749)
- [Dark Moon Craft Beer & Wine](#) is a beer, wine, and cider, shop and taproom 321 N Pearl St, [\(509\) 968-5195](tel:5099685195)
- Ellensburg Canyon Winery is a nice place to enjoy canyon views while sipping on wine with some friends with an onsite vineyard and tasting room 221 Canyon Vista Way [\(509\) 824-6336](tel:5098246336)
- Gård Vintners is another family-owned tasting room in downtown Ellensburg 311 N. Pearl St. 509.925.1095
- Thrall & Dodge Winery is owned by Troy and Kim Goodreau very nice owners in this boutique vineyard winery, and is open May through September in Kittitas County.
- Fortuity Cellars Wine+Art Tasting Room 115 W 3rd Ave, Ellensburg [\(509\) 779-6000](tel:5097796000)
- Whipsaw Brewing 704 N Wenas St [\(509\) 968-5111](tel:5099685111) a favorite of our family.
- Iron Horse Brewery 1621 Vantage Hwy [\(509\) 852-7222](tel:5098527222) there is food available here as well and a nice family recreation area.
- [Elk Heights Distillery](#) **1911 W Dolarway Rd, Ellensburg, WA, United States, Washington**
- Rock and Reef Brewing 416 N Main St
- Dark Moon Craft Beer & Wine 321 N Pearl St
- Ellensburg Brewery 206 N Main St
- [Happy's Market](#) **207 W University Way | Ellensburg, WA 98926** (509) 925-3500 – This is the place to go in town if you wish to purchase a wide variety of beers and wines.

## More about Tin Roof

### **Tin Roof Gardens**

A beautiful work in progress where you can stroll through paths that weave between streams and flowers, take a moment to reflect as you discover the secret garden, congregate around the fire pit and watch the stunning sunsets. Sit by the pond surrounded by magpies, quail, and owls. Our farm may sit on ancient grounds but is continuously developing with new varieties of fruits and vegetables, an small orchard, boutique vineyard, and happy organic bees.

### **Tin Roof Tasting Room**

Our old tin roof barn will soon house our tasting room, cafe, & gift shop. Here, you will find unique gifts and items from local artisans. For your culinary enjoyment, we plan to feature organic wines, honey products, gourmet coffee & tea, as well as homemade foods and fresh baked goods. More than just a tasting room, here we'll feature cozy sitting spaces and vintage wooded games to while away the day.

### **Tin Roof Apiary**

All natural and organic beekeeping methods help to give our bees health and sustainability. Some native bee species are at risk of extinction. In the United States bee populations are declining at an unprecedented rate. Commercial beekeepers report honeybee colony losses of 30% each winter since 2006. You can help.

Your gift goes to help educate and propagate. Visit [www.tinrooffarm.us](http://www.tinrooffarm.us) for more information

TAKE A BEE CLASS \$45/pp

Group of 3 or more \$25/pp

ADOPT A BEE for \$20

NAME A QUEEN \$50

### **Tin Roof Parties, Events, Classes, & Food**

Tin Roof Farm is situated in an historic gathering place. Here at Tin Roof, whatever your gathering and whatever your celebration, we can make it unforgettable! Tin Roof Bachelor gatherings, Bachelorette parties, Birthdays, Special days, Girl's or Guy's day out, Anniversaries, family reunions, marriage proposals, and we even offer a very limited number of wedding celebrations and of course homemade, fresh, locally sourced foods and drinks.

Visit [www.tinrooffarm.us](http://www.tinrooffarm.us) for more information

*Thank you for visiting, please consider leaving a review  
and please come again!*

