

Play, Learn & Grow



FOR ADMISSION & QUERY PLEASE CALL

+91 9458821111, +91 7454820901, +91 7599421111, +91 7599021111

Chaitanya Vihar, Phase-1, Vrindavan (Mathura) U.P.-281121
Website: www.saranghighimpact.com | E-mail: saranghighimpactschool@gmail.com

Mathura's **1st International Board**



Cambridge Assessment International Education
Cambridge International School

NOW GLOBAL EDUCATION IS IN STUDENT'S APPROACH

www.saranghighimpact.com





Welcome To THE SARANG HIGH IMPACT SCHOOL

To Inspire Excellence

Welcome to Our diverse learning community, where everyone is valued as a unique individual. **Putting Pupils first** sums up our ethos. **Inspiring Excellence** underpins everything we do.

Our team of dedicated, skilled practitioners work hard to ensure our pupils achieve high academic standard, We have a strong school community, where we priorities building caring relations with pupils and their families, in doing so, we nurture the social and emotional well being of our pupils, enabling them to be happy, caring individuals with a moral responsibility.

We look forward to welcoming you to our friendly, vibrant Sarang High Impact family.

Magic Habits

We expect pupils to always be **Motivated** in their learning, display a positive **Attitude** at all times, show **Gumption** When faced with obstacles, demonstrate **Independent** thinking and always **Communicate** effectively. **We call these our Magic Habits** !

" My children didn't know any English when they started, but they were **immediately greeted with someone who could speak our language.**"

NEW ADMISSION

" My son is always so **excited** to go into school and see his friends and teachers. I can honestly say that **My son has flourished** during his time at Sarang High Impact both in his education and his confidence."

PARENT

At **Sarang High Impact**, everything we do is driven by our vision. It is what we live and breathe every day. Our vision is supported by our strategic goals and guiding principles. It is who we are. It is the way things are done around here.

This is a School With Big Heart!

 **Cambridge Assessment
International Education**
Cambridge International School

A place everyone loves to be.

OUR THREE YEAR VISION

STRATEGIC GOALS

- 1 Be the best we can be :** Enable our children and ourselves to maximise achievement in all areas.
- 2 All in this together :** Work in partnership with each other, with the Tapscott Learning Trust, and with our wider community.
- 3 Take care of ourselves and each other :** Prioritise the well-being and mental health of our children and ourselves.
- 4 Innovate :** Inspire others through our innovative thinking and approaches.
- 5 Sustain:** Develop our structures and ourselves to create a sustainable organisation that can outlive our direct involvement.
- 6 Make the difference :** Find ways of measuring our impact; making sure our approaches are credible and making the difference.

GUIDING PRINCIPLES

Think About what we do and why.
Be positive and supportive.



Welcome To THE SARANG HIGH IMPACT SCHOOL

Memorable learning experiences

Sarang High Impact is a diverse multi-cultural Cambridge Lower Secondary school.

Our mission is to support excellence and learning to our learners. We are the member of global network of Cambridge schools and aims to provide professional development with to deliver the best education possible to our learners.

School will be offer:

- Cambridge Early Years Programme
- Cambridge Primary with Cambridge Primary Checkpoint (Age 5–11)*
- Cambridge Lower Secondary with Cambridge Lower Secondary Checkpoint (Age 11–14)*
- Age ranges are for guidance only.



We are extremely proud of our pupils and their achievements. At Sarang High Impact school ,we work together to provide memorable learning experiences for all. We ensure that every child has access to the very best learning journey and enrichment opportunities. Sarang High Impact is a community school and we strongly believe that our links with our local community and other schools in the area create a strong environment for our children to learn and grow.



 **Cambridge Assessment
International Education**
Cambridge International School

Encouraged and nurtured

We invite children, their parents, carers and families into a friendly, happy and hardworking school...where respect for others, positive attitudes towards work and behaviour are encouraged and nurtured

Igniting an interest in the world

Our teaching is stimulating and creative, encouraging our children to continue their education outside of school, and become lifelong learners. We want to ignite an interest in the world around them, and for that interest to lead to fulfilling and imaginative lives. Learning should be fun!

Dedicated staff

I am also very proud of our exceptionally experienced and dedicated staff, who ensure that all our children are well supported to achieve their true potential, and work hard with families to overcome any barriers to learning.

Parent partnership

Sarang High Impact school also values the school-home partnership as essential in helping pupils achieve their best. By working and communicating effectively with parents and carers, we ensure students' achievements and needs are recognised, celebrated and met in a positive, inclusive learning environment. We have established an environment that is welcoming and accepting of parents and work very hard to involve you in every step of your child's time here...and increase your child's enjoyment of learning.

Get in touch

The information and images in this prospectus are just the start. We welcome visits from families so that you can find out for yourself whether this is the place for you and your child.



Welcome To THE SARANG HIGH IMPACT SCHOOL

1- State of art Infra :- In order to encourage its students to excel in every field.

The School has setup the most modern infrastructure. The School proudly features a multipurpose auditorium, a semi-Olympic size football field, two synthetic lawn tennis courts, a synthetic basketball court and two cricket practice net-pitches.

2- A.I. Based class room :- We have A.I. enabled system which provide adapting to a student's learning process as it unfolds step by step, not simply providing feedback on right or wrong answers. An exciting addition to Google class room is the power of A.I. in various functionalities.

A.I. Powered education technology compasses tools for teachers, students like as educational games, adaptive learning platforms, chatbots and intelligent tutoring systems provide individualized support for learners.

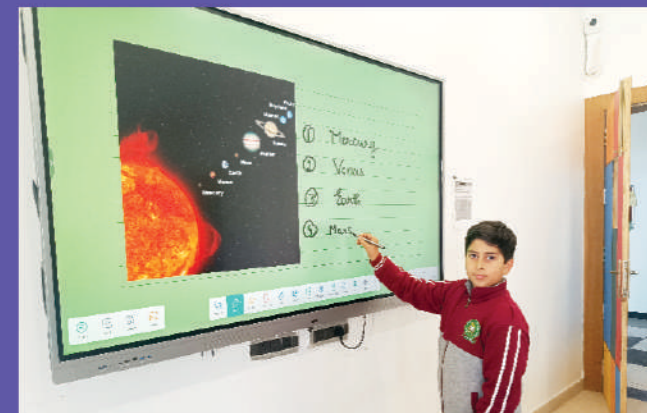
3- Composite Lab :- We have a well-equipped, well designed, well-lit composite science lab provides the facilities to work practically. The students of all classes make extensive use of this lab and are encouraged to test theories and provide concepts.

or

We firm in the belief that hands on learning stands the students in good stead in the long run, the school has well equipped state of the art physics, chemistry, biology and mathematics laboratories.

4- Well Equipped Library :- explore a world of knowledge at our library where limitless learning meets the digital age.

5- Computer and Robotics :- We have a well-established computer and robotics laboratory in our school to focus on the progressive and evolving approach to ensure that our students benefits from current technological advances in IT based educational initiations. All computers come with modern software and cutting edge learning tools for robotics, coding and programming.



 **Cambridge Assessment
International Education**
Cambridge International School



Welcome To THE SARANG HIGH IMPACT SCHOOL

 **Cambridge Assessment
International Education**
Cambridge International School



6- Children play area :- We have a well-equipped play area for our tiny kids. It helps students to develop important cognitive skills like problem solving, critical thinking and creativity.

7- Outdoor Games:- In addition to academic excellence, we value physical fitness and recreational activities. Our campus offers a plethora of sports facilities, including tennis court, basket ball court, football, and cricket practice pitches/ field.

8- In door play area:- Inclusion of indoor games in our curriculum of studies is very important for the physical and mental wellbeing of our students.

9- A.V. Room:- An all-weather audio-visual hall/Room with a capacity of 200 students, provides the students ample opportunities to pursue a wide range of activities throughout the year.

10- 24x7 CCTV Surveillance:- We have smart-class rooms with CCTV Surveillance. Experience modern learning in our school supported by top-tier CCTV Surveillance ensures continuous monitoring for a secure environment.

11- Fully A.C. Campus :- All Classrooms & activity rooms are spacious well lit & air conditioned. Eventually our school have fully AC campus.





Curriculum CHALLENGING & ENJOYABLE

**Cambridge Assessment
International Education**
Cambridge International School

Cambridge Pathway

Cambridge Pathway is for students aged 3 to 19. Its wide range of subjects and flexibility gives shape the curriculum to make it exciting and relevant for our students.

Cambridge students have the chance to acquire the knowledge and skills they need to achieve at school, university and beyond.

The five stages lead seamlessly from primary to secondary and pre-university years. Each stage – [Cambridge Early Years](#), [Cambridge Primary](#), [Cambridge Lower Secondary](#), [Cambridge Upper Secondary](#) and [Cambridge Advanced](#).

International Curriculum

We believe in giving Cambridge schools the power to shape their curriculum around how they want students to learn.

What are schools bringing into their curriculum with Cambridge International? We set out three important things we want students to develop – deep subject knowledge, conceptual understanding and higher order thinking skills. Our Cambridge Pathway is a clear framework for progression from one stage to the next.

Deep subject knowledge, conceptual understanding and higher order thinking skills.

Cambridge programmes combine an emphasis on mastering subjects in depth, at the same time as developing skills for study and work in the future.

We believe in the intrinsic value of studying a subject in depth. In the words of Andreas Schleicher (2017), Director for Education and Skills, OECD: 'In top performing education systems the curriculum is not mile-wide and inch-deep, but tends to be rigorous – that is, provides a high level of cognitive demand. It's also more focused – with a few things that are taught well and in great depth and in a way that is coherent.'

Deep subject knowledge is important in order to develop the ability to solve problems, to apply understanding to new situations and to enable learners to progress to the next stage. It is especially important at Cambridge International A Level because most learners aspire to go to university, where deep subject understanding is so vital.

Regular consultation with leading higher education institutions (including Harvard, Stanford and Cambridge) has informed our work to make sure our syllabuses for 16 to 19 year olds encourage learners to develop their conceptual understanding: a firm grasp of the subject's key concepts (see Meyer and Land 2003) and developing the skills they need to succeed at university.

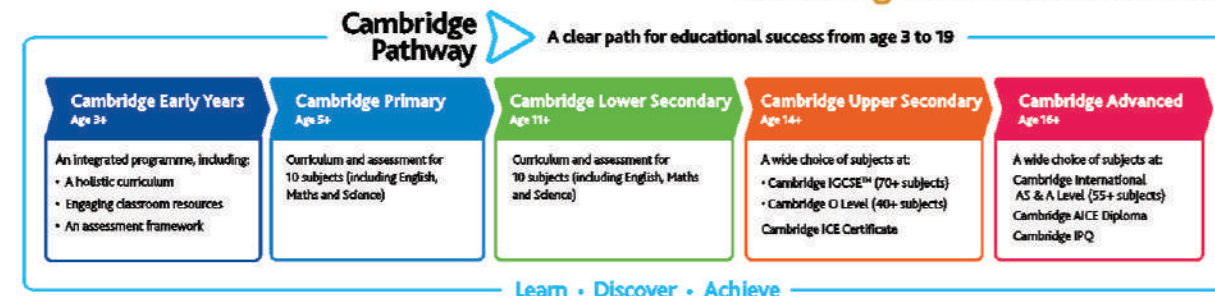
We see key concepts as essential ideas that help learners develop a deep understanding of their subject and make links between different aspects. Key concepts can often transform a student's grasp of their subject, and open up new ways of thinking about,



understanding or interpreting the important things to be learned. Good teaching and learning incorporate and reinforce a subject's key concepts to help learners gain:

- greater depth and breadth of subject knowledge.
- confidence, especially in applying knowledge and skills in new situations.
- fluency to talk about their subject conceptually and show how different aspects link together.
- a level of mastery of their subject to help them enter higher education.

As well as encouraging students to develop higher order thinking skills within subject disciplines – problem solving, critical thinking, independent research, collaboration, presenting arguments – we believe students need to work effectively across disciplines.



Curriculum CHALLENGING & ENJOYABLE

**Cambridge Assessment
International Education**
Cambridge International School

International Recognition

It is vital that Cambridge students can be confident that their qualifications will be understood and valued throughout their education and career, in their home country and internationally.

We understand that, as an organization, we have an important role to play in helping universities worldwide understand our curriculum and assessments, and what the grades that educators and students work so hard to achieve really mean.

Cambridge qualifications are accepted by universities all around the world. Our global team of recognitions managers works with universities worldwide to help them understand our curriculum and assessments. We also communicate regularly with government authorities to understand their national context and needs.

Working closely with universities and governments ensures a smooth progression for all our students, whether they wish to study in their home country or abroad.

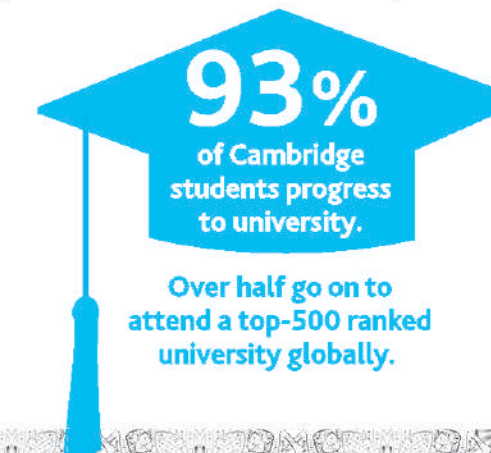
Universities understand the demand of our curricula and the rigour of our assessments. Around the world, over 1400 universities recognize our qualifications, including over 650 universities in the US (including all the Ivy League), plus key universities in other major higher education destinations such as Canada, Australia, Singapore, South Africa, Germany and the Netherlands.



In the UK, all universities accept Cambridge International AS & A Levels in exactly the same way as the UK AS and A Levels. We are continually building relationships with universities and other higher education institutions so that we can create yet more opportunities for students.

For example, because the US is one of the main destinations for internationally mobile students, we founded a US Higher Education Advisory Council (HEAC) to advise us on expanding recognition of Cambridge programmes in US universities, and to feed into development of our Cambridge Advanced programmes.

The current membership includes representatives from top US universities, including Brown University, Columbia University, Duke University, Florida State University, Massachusetts Institute of Technology, Rice University, University of Arizona, University of California, University of Maryland, University of Southern California, University of Virginia, University of Washington and Vanderbilt University.





Experiential Learning

EXPERIENCE IS THE TEACHER OF ALL THINGS

Cambridge Assessment
International Education
Cambridge International School

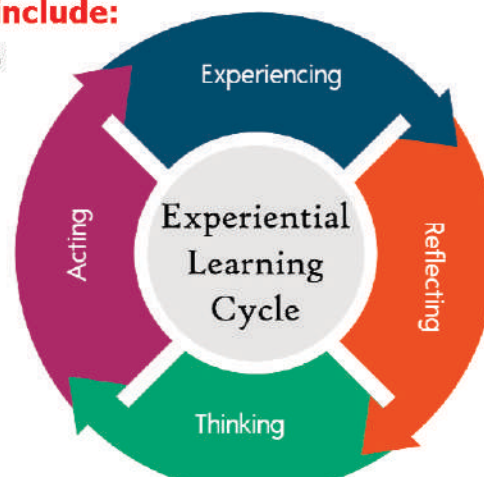
Experiential learning is a teaching and learning method that involves students learning through hands-on experiences and reflection. It's a holistic approach that moves away from the traditional classroom setting and involves actively engaging with the world around us.

Here are some principles of experiential learning:

- Learning is connected
- Learning is real
- Learning is active and engaging
- Learning is authentic
- Learning is challenging and dynamic
- Learning is doing

Experiential learning activities can include:

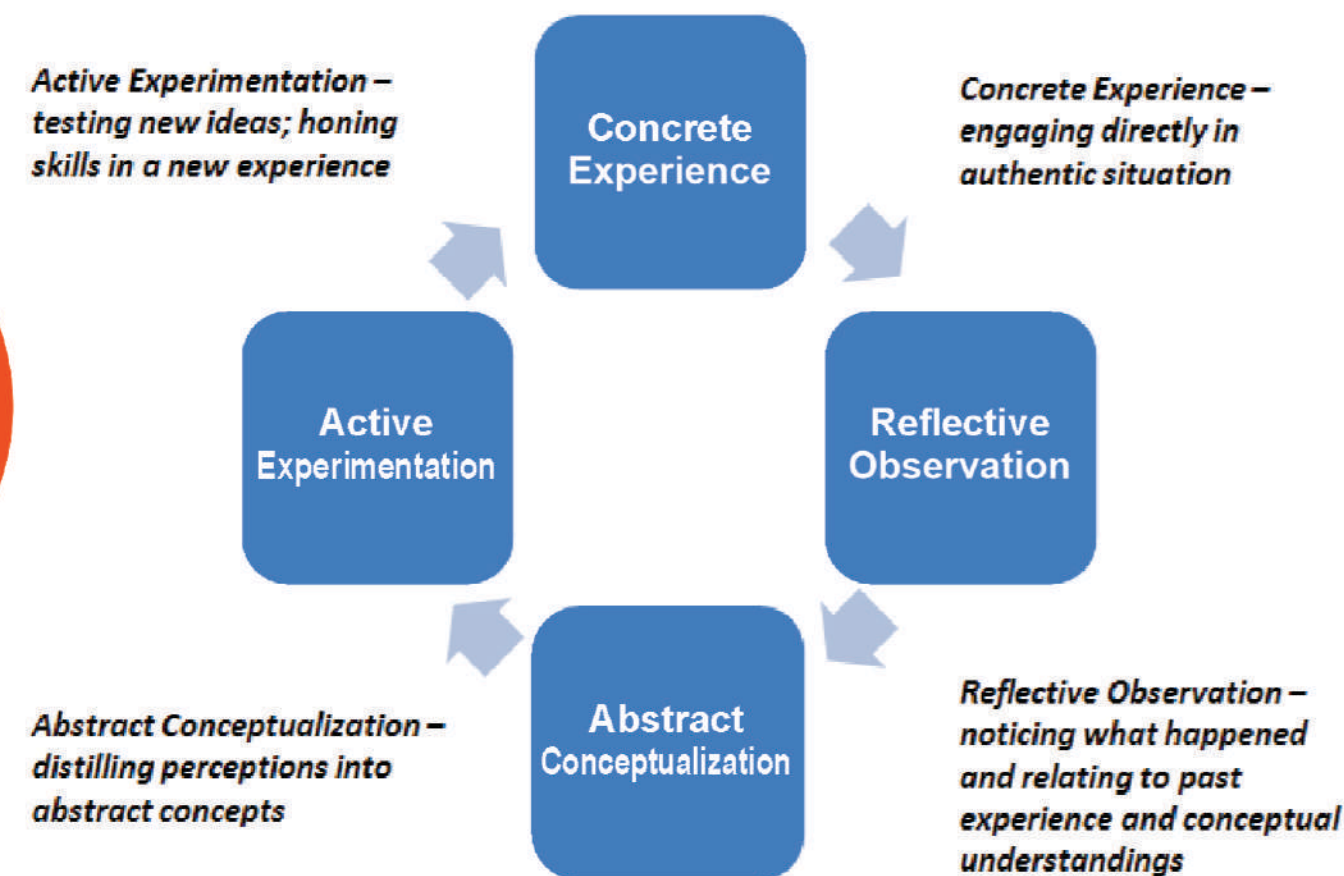
- Hands-on laboratory experiments
- Practicums
- Field exercises
- Studio performances
- Internships
- Studies abroad
- Field trips
- Field research
- Service-learning projects



According to Norwich University's Kolb's experiential learning cycle concept, the learning process is divided into four basic theoretical components:

Concrete experience, Reflective observation,
Abstract conceptualization, Active experimentation.

Kolb's Cycle of Experiential Learning



ADMISSION POLICY

Cambridge Assessment
International Education
Cambridge International School

Students Admission and Selection Procedure/Policy Age criterion

Students are be placed in grade levels by age. The cut-off date determining grade placement shall be September 30th, although exemptions may be considered for students demonstrating developmental readiness whose date of birth falls within seven days of the cut-off (i.e., 7 October). The minimum age for admission shall be two years and nine months. No student may be admitted who shall turn 20 years of age prior to the date of his or her graduation. The Director shall specify any exceptions.

Children must be 3 years of age by September 30th of the current academic year to be placed in the Nursery 2; 4 years of age by September 30th to join the Pre-Kindergarten; 5 years of age by September 30th to join the Kindergarten; 6 years of age by September 30th to join grade 1, and so on at all grade levels throughout the school.

Students transferring from school systems that do not operate on an August to June school year will normally be required to repeat part of a given grade level. When considering a waiver of this requirement the school will consider a variety of factors, including the student's age and social maturity, academic performance, and level of English language acquisition. At the discretion of the director, students may be considered for direct August placement into Grade 1 (bypassing the prerequisite of having completed a full year of Kindergarten/KG3), if they turn 6 years old prior by January 31 of the same calendar year.

There are 2 exceptions to the age criterion, as follows:

1. Students who are two years and nine months and fully potty trained may join the half day KG 1a (Nursery 1a) class. However, to immediately join the full-day KG 1b (Nursery 1b) programme students must turn 3 years of age by September 30th. Students who turn 3 years of age after September 30th but before the commencement of the second semester will be placed in KG 1a (Nursery 1a) but may join the full day KG 1b (Nursery 1b) program for the second semester. All students must turn 4 years of age by September 30th of a given academic year before they are subsequently placed in the KG 2 (Pre-Kindergarten/Reception) programme for that year.
2. From KG3 upwards, students joining the school who do not meet the school's 30 September age criterion but have successfully completed a given grade level in their previous school, equivalent in both age range and learning expectations to that offered at IST, will be considered for placement in the following year's grade level. Fully documented and notarized school records and testimonials clearly indicating the student's readiness for the placement must be provided. Such placement decisions will be made on a provisional basis, and will be subject to mid and end of year review. Should the school determine that the placement is not meeting the student's learning needs, grade demotion or repetition may be considered.

PARAMETERS/CRITERIA FOR ADMISSION

CLASS	AGE	CRITERIA
Cambridge Early Years EY 1 (Pre- Nursery)	2 years as on 31.03	Interaction with the Director Principal
Ey2 (Nursery)	3 years as on 31.03	
EY3 (K.G.)	4 years as on 31.03	

CLASS	CRITERIA
Cambridge Primary (Class 1 – Class V)	Interaction with the Director Principal
Cambridge Lower Secondary (Class VI – Class VIII)	

Students are be placed in grade levels by age. The minimum age for admission shall be two years and nine months.

Children must be -

- 3 years of age by September 30th of the current academic year to be placed in the Nursery 2.
- 4 years of age by September 30th to join the Pre-Kindergarten.
- 5 years of age by September 30th to join the Kindergarten.
- 6 years of age by September 30th to join grade 1.
- and so on at all grade levels throughout the school.





OUR ETHOS AND VALUES

**Cambridge Assessment
International Education**
Cambridge International School

At Sarang High Impact School We put the young Person at the Center of all we do. Each day we venture in to our community where opportunities flourish, and which fosters individually. We expect the best of ourselves and celebrate our achievements with our School community which develops with us towards a confident, happy place in our world.

We empower our students to work hard and reach their potential.

We Aim :

- To equip all learners with the necessary skills needed to develop their own interest/ personal choices and challenges.
- To provide a fun, safe environment where all learners feel valued and where they can share their successes and failures without fear.
- To embrace and celebrate diversity and promote cohesion between and within the communities of our School.

At Sarang High Impact School We :

- Create a Stimulating and attractive environment, which supports learning.
- Provide access to a broad, balanced curriculum, which offers pace, challenges, continuity and progression.
- Encourage pupils in their learning through active participation, differentiated teaching, effective assessment, feedback and target setting.
- Extend pupils fully by encouraging perseverance and aiming for maximum success in all things.
- Support pupils in developing a sense of right and wrong through example and a school code of conduct.
- Celebrate pupils success and share it within the school and wider community.
- Ensure equality of opportunity underpins everything we do.
- Develop a sense of community where all pupils, parents, staff and others feel valued and respected.

Exposure with Art

At the sarang high impact school is doing arts education, which helps to increase student's ability to manage behaviour, make decisions and cultivate a positive concept of the self. Sports values in every class room, It helps Increases personal fitness and motor skill development. Provides opportunities for personal goal setting. Its again helps to reduce stress & anxiety strengthens relationships with others.

Cultural events are designed for students with related interests, lifestyles, beliefs, or values together and celebrates their culture.



GOLDEN RULES

Always make an effort and
TRY YOUR BEST like **Safa the Spider**
(Sarang High Impact Achieves)

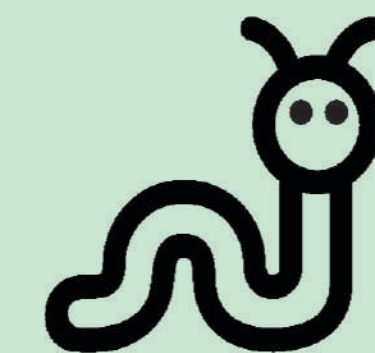
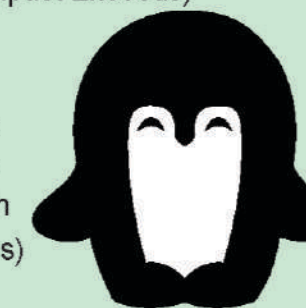
BE CONFIDENT and believe
in yourself like **Lionel the Lion**
(Sarang High Impact Leads)



Try to **SOLVE PROBLEMS** like
Polly the Panda and be kind and
helpful (Sarang High Impact Exceeds)



BE POSITIVE like **Prem the Penguin**
and respect what others
think, feel and do (Sarang High Impact Cares)



AIM HIGH like **Colin the Caterpillar**
and make your school a place to be proud of
(Sarang High Impact Futures)

Holistic Approach



• Addressing the child's multiple rights within the context of the family and community, using a variety of strategies.

• Add value to any activity directed towards young children and their families.

• Single focus programs has demonstrated limitations and ineffectiveness.

Seven Feathers Program

For overall development of the child there should be harmonious balance between the mind, body & natural learning pace. To assure four dimensional growth of a child, we have 'proprietary program "Seven Feathers". It is unique tailor made program based on howard gardener theory of Multiple Intelligence.

Language Development

Cognitive Development

Socio - Emotional Development

Personal Awareness

Fine/ Gross Motor Development

Problem Solving Attitude

Creative Development

Multiple Intelligence enable
Curriculum which makes
child smart in every field...



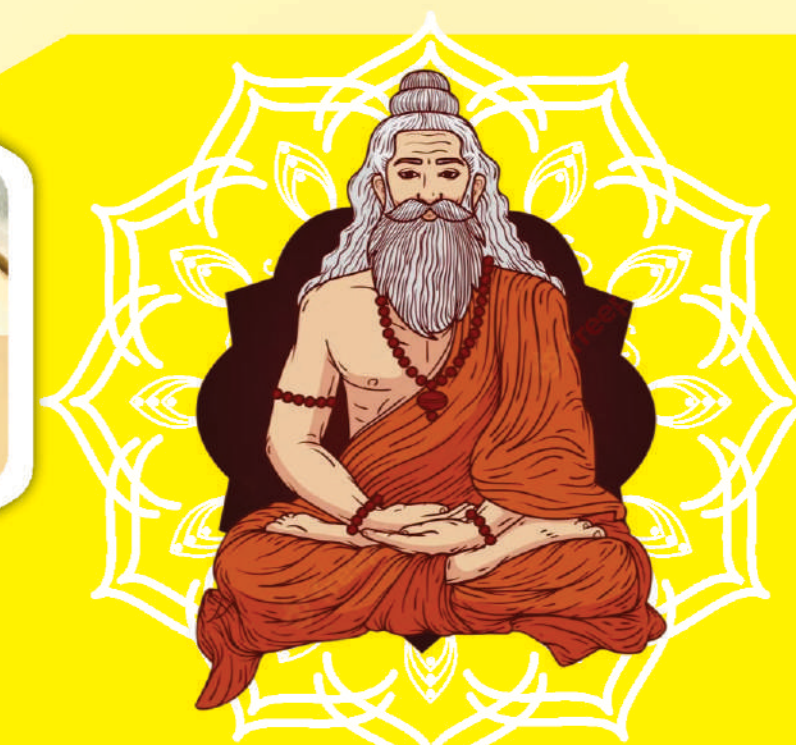
The multiple intelligences curriculum provides an opportunity for all students to learn. It allows students to shine in those areas where they are strong and allows for students to develop those areas in which they are struggling.



GEETA GYAN AND VEDIC EDUCATION

Cambridge Assessment
International Education

Cambridge International School



Through Vedic Education and Geeta Gyan we encourage our students to live with purity, strength, discipline, honesty, kindness and integrity in order to find their purpose and encourage them for problem solving technique with ease and clean mind to understand the soul spirituality by scientific means.

It also helps the students to follow the principle of "Simple living high thinking." In short our school is we are going to enlighten our students with ART OF LIVING in the competitive world.





OUR DAYS ARE FILLED WITH MAGIC

DON'T LIMIT YOUR OPPORTUNITIES



OUR MISSION & VISION

**Cambridge Assessment
International Education**
Cambridge International School

School encourages the development of the whole student. Our aim is to support learners in becoming curious, reflective and critical in their thinking as global citizens. School is to empower students to acquire, demonstrate, articulate and value knowledge and skills that will support them, as life-long learners, to participate in and contribute to the global world and practice the core values of the school: respect, tolerance, inclusion, and excellence.

Our Mission is to enable all learners' access to learning through the provision of:-

- Differentiated, in-depth and cohesive learning programs aligned to year level content and achievement standards informed by the UK based curriculum.
- Highly effective teachers, focussed on improving student outcomes, through their commitment to ongoing professional development, quality teaching, evidence based practices, coaching and mentoring and collaboration
- A quality inclusive learning environment that is responsive to student voice
- Enriching, engaging resources
- Opportunities for community and parents to participate in learning and decision making partnerships.

Our vision at School is to empower students to acquire, demonstrate, articulate and value knowledge and skills that will support them, as life-long learners, to participate in and contribute to the global world and practise the core values of the school: respect, tolerance & inclusion, and excellence.

School encourages the development of the whole student. Our aim is to support learners in becoming curious, reflective and critical in their thinking as global citizens. School is committed to:

- To provide an educational program that develops students' curiosity and creativity.
- To develop responsible and engaged learners.
- To foster tolerance, respect and acceptance of others.
- To build each student's resilience and self-esteem.
- To provide a curriculum that is rich and relevant and allows all students to succeed.
- To promote a strong, supportive partnership between home and the school and the wider community.
- To have high expectations of ourselves and others.

Our Digital Learning Technologies Vision Statement

Digital Learning at Sarang High Impact School will be irresistibly engaging for students and teachers across all learning areas and domains. Our students will become innovative and confident users of digital technologies, using technology to communicate, collaborate, curate and create, while fostering higher order thinking skills and real life problem solving.



From the desk of Director

It gives me immense pleasure in extending a very warm welcome to all my students, staff and the greater school community.

The Sarang High Impact School core value is embedded in the uniquely integrated and exciting curriculum which constantly stimulates the young mind development, logical and critical thinking with reasoning skills.

Making children realize their strengths and weakness is the important step which we include in our extra co-curricular activities and enable them to think their own form in various dimensions. This will enable them to face and handle any situation in their life. They must become responsible citizens of the society who respects the environment and live a meaningful life. At the Sarang High Impact School, we along with our dedicated team and a balanced blend of Commitment, Diligence and Sincerity will always strive us to provide the best education to our students.

We look forward to serving our children the best education they need to fulfill their dreams. Our school welcomes to all of you in the academic journey with us. Best wishes and blessing to our children!

Mrs. Khushboo
Director
The Sarang High Impact School
Vrindavan



**"Children must
be taught how to
think, not what
to think"**



**"There are two gifts
we should give our
children, one is
roots and the other
is wings"**

From the desk of Director

The Sarang High Impact School is school of vision venturing for excellence in every child, offering wings for the dreams of every child and making it a reality for what we are aiming at.

The campus of our school is spirited and energetic, full of bright and innovative ideas. The Sarang High Impact School is a learning laboratory for the curious mind of every child. We are not only preparing our children for their future but also aim to educate them to be Global citizens which is an important core value of our school.

At the Sarang High Impact school we have a good team of highly creative and dedicated dedicators with professional experience to meet the need of the today's learners. We aim not only for exam results but also for development of generic skills and attitude to deal with complexity learning dispositions, reflectiveness and social ability. "Learning is itself a learnable craft and we can all get better at learning."

We heartily welcome you and your child to The Sarang High Impact School in Vrindavan. We wish you a great experience in parenting, a heartily and creative relationship with the school and very bright future for our students.

We are glad that you have chosen us and looking forward for a wonderful session!

Mr. Martand Dev
Director
The Sarang High Impact School
Vrindavan



WHY CHOOSE US

We believe education works best when curriculum, teaching and learning, resources and assessment are closely aligned and encourage personal growth and wellbeing.

Discover an education that gives students the skills they need to be ready for the world.

Qualifications that are recognized and valued worldwide

Cambridge qualifications are recognised and valued by the world's top-ranked universities and higher education institutions local to Cambridge learners – opening doors to a world of opportunities.

Setting a Global Standard

With over 160 years' experience in delivering fair, valid and reliable assessments to students worldwide, we offer a global, recognised performance standard for international education.

Learning with lasting impact

Cambridge learners build subject knowledge and conceptual understanding, and develop a broad range of skills, learning habits and attributes to help make them ready for the world.

Improving learning outcomes through data-led insight and action

Our trusted baseline and diagnostic assessments, together with our insights and evaluation service, help schools turn data into knowledge and actionable insights, to inform teaching decisions and improve learner outcomes.

Bringing together a community of experts

We bring together the collective knowledge of experts worldwide and our diverse community of educators in 160 countries, and support them to learn from one another, and share ideas and information.



Cambridge International School

Benefits of a Cambridge education

Discover an education that gives students the skills they need for life, helping them achieve at school, university and work.

1. International Curriculum

Our curriculum sets a global standard for education, with programmes that stretch, challenge and inspire our students.

2. Teaching and learning

The Cambridge teacher and learner attributes inspire a love of learning in our students and an innovative approach in our teachers.

3. Assessment

Good assessment is at the heart of a good education. We design assessments that are fair, valid, reliable and practicable.

4. International recognition

Cambridge students can be confident that their qualifications will be valued by universities and employers across the world.

5. Global Community

Be part of a global community – nearly a million students in 10,000 schools in 160 countries prepare for the future with our qualifications.

6. Parents and students

we prepare students for life, ready to tackle the demands of tomorrow's world.

