

Manufacturer of HVAC Components



**THE
METAL
SHOP**

www.metalshop.org



USA 1.800.441.2491

Scan the QR Code below and go directly to a Downloadable PDF Copy of this Catalog.



Look inside the back cover for more QR Codes that will take you directly to The Metal Shop Website, our Facebook page, our YouTube Channel product videos, and other useful QR Code links.

TABLE OF CONTENTS

VISIT WWW.METALSHOP.ORG FOR **LIST PRICING**

About Us	2
Air Handler Installation Components	
Adjustable Air Handler Closet Stands	4
Return Air Stands	6
Coffin Box & Coffin Box Stand	8
Return Air Accessories	10
Filter Housings	11
Drain Pans and Pyramids	14
Hanging Kits	16
Condenser Installation Components	
Engineered Condenser Stands	18
Engineered Aluminum Wall Brace	20
Engineered Hurricane Brace	21
Engineered Anchor Clips	22
Adjustable Condenser Cage	23
Package Unit Adapters	24
Tapered Plenums	25
Fiberglass Duct Components	
Fiberglass Plenums	26
Triangles and Reducers	28
Roof Vents, Wall Vents, and Line Jacks	30
Refrigerant Tank Racks	34
Round Grilles and T-Bar Diffusers	36
Dryer Ventilation Products	
Dryer Ventilation and Accessories	38
Air Flow Devices and Access Doors	40
Commercial Duct Products	42
Events & Demo Days-Show Off Your Installation	44

BE AMERICAN **BUY AMERICAN**

CELEBRATE AMERICA



www.metalshop.org

MADE IN AMERICA

ABOUT US

THE METAL SHOP IS A PROUD AMERICAN COMPANY

The Metal Shop was established in May of 1982.

Our mission is to manufacture quality products for the HVAC industry. It has always been our goal to create products that make working on the jobsite easier for the installer, while giving the end-user a long lasting quality product.

Since our inception, we have broadened our product line to incorporate fiberglass as well as metal products.

Today we have a diverse selection of components for residential and light commercial HVAC installation. Our product line continues to grow through the input received from you - our valued customer.

We thank you for your loyalty and continued support.



www.metalshop.org

Visit us @ www.metalshop.org

HAND CRAFTED AMERICAN MADE



Visit us @ www.metalshop.org



ADJUSTABLE CLOSET STANDS - ASSEMBLED



ADJUSTABLE AIR HANDLER CLOSET STANDS

Our most popular air handler stand is designed to be used for "free air" return. Made of heavy duty 16 ga. 1" tube steel. All seams & joints are MIG welded. Features a 1" filter rack, neoprene gasket, and adjustable width.

Available in 15", 17", 24", & 28" heights.

Item # 004370 Shown Below



Contractor Preferred
Air Handler Stand

PART NUMBER	ADJUSTABLE STAND DIMENSIONS
004024	24" H 22" D ADJ. 14" TO 25"
004027	15" H 27" D ADJ. 14" TO 25"
004030	15" H 22" D ADJ. 19" TO 30"
004031	28" H 22" D ADJ. 14" TO 25"
004040	17" H 22" D ADJ. 16" TO 27"
004045	17" H 22" D ADJ. 20" TO 32"
004370	15" H 22" D ADJ. 14" TO 25"

ADJUSTABLE CLOSET STANDS - BOXED

ADJUSTABLE UNASSEMBLED STAND IN A BOX

Self-locking assembly - no tools required.
Constructed of 16 ga 1" Tube Steel with
Neoprene vibration gasket. Ships knocked
down, in a box for easy storage and
transportation.



Assembles in seconds.
Contractor preferred.
Perfect for multi-family residential.



PART NUMBER	ADJUSTABLE STAND DIMENSIONS
004024KD	24" H 22" D ADJ. 16" TO 27" BOXED
004371	17" H 22" D ADJ. 16" TO 27" BOXED

FIBERGLASS RETURN AIR STANDS

FIBERGLASS RETURN AIR STANDS

Perfect for garage installations, this Fiberglass R/A Stand is 20" High and available in 21", 22", 24", 26", & 28" depths. Constructed of a 24 ga. Galvanized Steel frame and R6 anti-microbial duct board.

Pictured with the 4" Adjustable Mini Stand but can also be supported by corner legs below (shown on page 8).



Manufactured
For Use With Your Equipment

PART NUMBER	FIBERGLASS RETURN AIR STAND - ALL 20" H
500301	F/G R/A STD 17.5" x 21"
500302	F/G R/A STD 18.5" x 21"
500303	F/G R/A STD 21.0" x 21"
500305	F/G R/A STD 21.5" x 21"
500306	F/G R/A STD 23.5" x 21"
500307	F/G R/A STD 24.5" x 21"
500308	F/G R/A STD 26.5" x 21"
500310	F/G R/A STD 14.5" x 22"
500314	F/G R/A STD 17.5" x 22"
500315	F/G R/A STD 18.0" x 22"
500317	F/G R/A STD 18.5" x 22"
500324	F/G R/A STD 21.5" x 22"
500327	F/G R/A STD 23.5" x 22"
500328	F/G R/A STD 24.0" x 22"
500329	F/G R/A STD 24.5" x 22"

Goodman®

Heating & Air Conditioning
Amana

Carrier

ICP

Rheem

RUUD

TRANE

TRANE®

American Standard
HEATING & AIR CONDITIONING

LENNOX™

NORDYNE

METAL RETURN AIR STANDS



METAL RETURN AIR STANDS

Strong steel sides for added protection in garage applications, this 20" Metal Return Air Stand is constructed of a 24 ga. galvanized steel frame and R6 anit-microbial duct board. Available in 21", 22", 24", 26", & 28" depths.

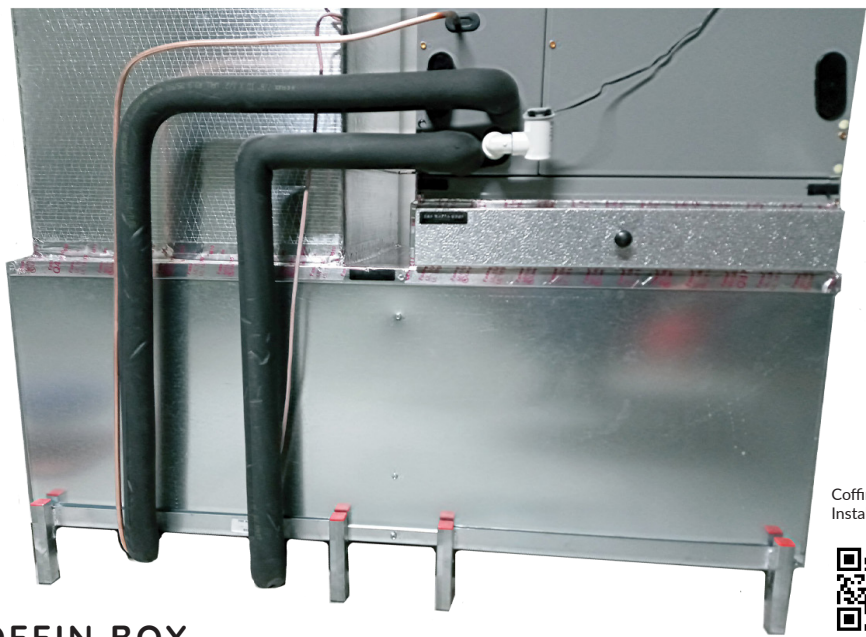
Manufactured
For Use With Your Equipment



PART NUMBER	METAL AIR STAND W x D x 20" H
003101	METAL R/A STD 17.5" x 21"
003102	METAL R/A STD 18.0" x 21"
003103	METAL R/A STD 21.0" x 21"
003105	METAL R/A STD 21.5" x 21"
003106	METAL R/A STD 23.5" x 21"
003107	METAL R/A STD 24.5" x 21"
003108	METAL R/A STD 26.0" x 21"
003110	METAL R/A STD 14.5" x 22"
003115	METAL R/A STD 18.0" x 22"
003117	METAL R/A STD 18.5" x 22"
003124	METAL R/A STD 21.5" x 22"
003127	METAL R/A STD 23.5" x 22"
003128	METAL R/A STD 24.0" x 22"
003129	METAL R/A STD 24.5" x 22"

Visit us @ www.metalshop.org

COFFIN BOX AND COFFIN BOX STAND



Coffin Box
Install Video

COFFIN BOX

The Coffin Box is the perfect solution for air handlers and can also be used for furnaces. Constructed of heavy duty 24 ga. galvanized steel and lined with R6 anti-microbial fiberglass duct board. (Shown with two 4" H Mini Stands and a Filter Housing, see page 12.)

SIZING:

To determine which size is needed, match the depth of the coffin box to the depth of the AHU.



Includes easy to install center brace.



ADJUSTABLE COFFIN BOX STAND

Protect the Coffin Box by getting it off the ground with a Coffin Box Stand. Adjustable Depth from 21" to 28" and available in 4" or 8" High.

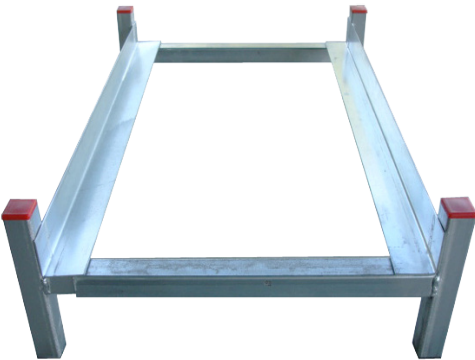
COFFIN BOX AND COFFIN BOX STAND



Shown is The Metal Shop Coffin Box on an 8" H Coffin Box Stand and the Magnetic Door Filter Housing.

PART NUMBER	COFFIN BOX DIMENSIONS - W x D x 19" H
003505	COFFIN BOX 46" x 21"
003506	COFFIN BOX 46" x 22"
003508	COFFIN BOX 46" x 24"
003512	COFFIN BOX 46" x 28"
003515	COFFIN BOX 48" x 24"
004009	ADJUSTABLE COFFIN BOX STAND 4" HIGH
004010	ADJUSTABLE COFFIN BOX STAND 8" HIGH

R/A STAND ACCESSORIES



ADJUSTABLE 4" MINI STAND

All the popular features of the adjustable A/H stands but only 4" high. Fits 21", 22", & 24" depths with an adjustable width from 14" to 25" Holds up to 400 lbs, fits under our insulated Return Air Stands or use two under the Coffin Box.

PART NUMBER	4 " HIGH ADJUSTABLE AHU STAND
004375	4" H 22" D ADJ. 14" TO 25" W

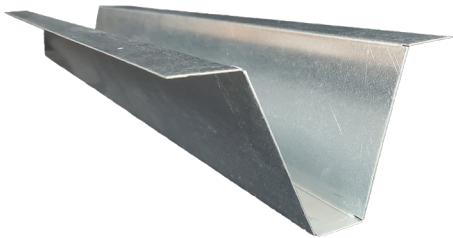
CORNER LEGS

Constructed in 22 ga. galvanized steel. R/A stand legs are available in 4" and 6" and are sold in sets of 4.



V-LEGS

V-Legs are 22" long to match the coffin box & the R/A stands. Available in 4" and 6" and constructed of 22 ga. galvanized steel. Sold individually.

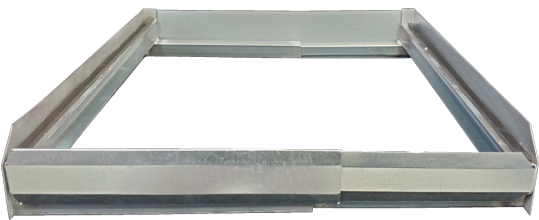


PART NUMBER	DESCRIPTION	QUANTITY
001360	4" H R/A LEGS 4 PER SET	25 SETS PER BOX
001361	4" H x 22" D V-LEG	EACH
001362	6" H R/A LEGS 4 PER SET	25 SETS PER BOX
001365	6" H x 22" D V-LEG	EACH

ADJUSTABLE FILTER RACK

ADJUSTABLE FILTER RACK

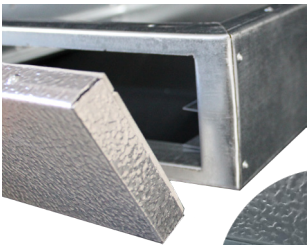
Adjustable width from 15" to 26" and available in both 22" and 28" deep. Constructed of 16 ga. frame and 18 ga. filter channel with adjustable front door. Rear plate is cut to size in field.



PART NUMBER	ADJUSTABLE FILTER RACK WITH DOOR - SIZES
004379	15" TO 26" W x 22" D x 3" H
004382	15" TO 26" W x 28" D x 3" H

WORK SMARTER NOT HARDER!

The Metal Shops Fiberglass and Metal Return Air Stands are designed to be used with the Fully Insulated Magnetic Door Filter Housings. Together you achieve a virtually seamless professional air handler unit installation. Elevate your Return Air Stand with Corner Legs or the V-Legs shown on page 8.



Return Air
Stand
Video

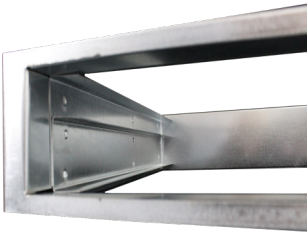
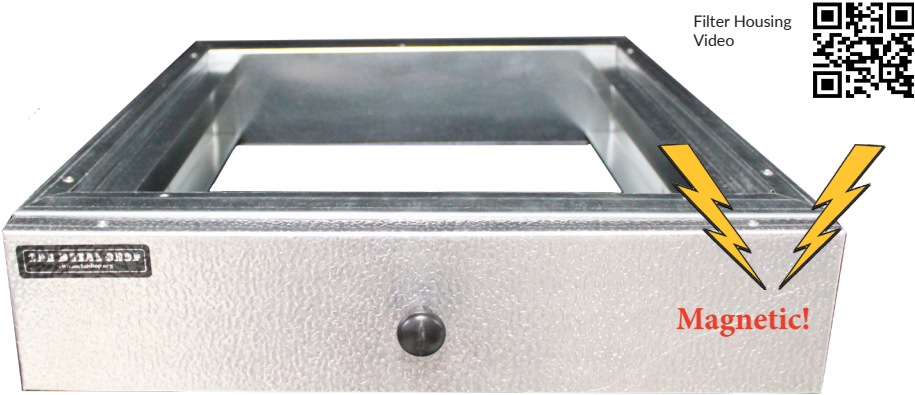
VIRTUALLY SEAMLESS INSTALLATION

Visit us @ www.metalshop.org

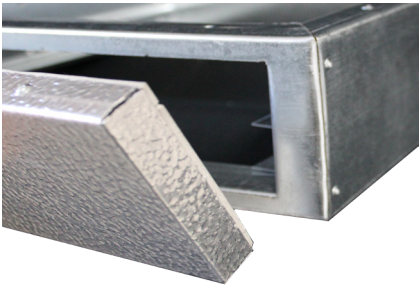
FULLY INSULATED FILTER HOUSINGS

FILTER HOUSING

Filter housings have a fully insulated frame and door. Constructed of 26 ga. galvanized steel with an Embossed Aluminum door. Rare Earth Magnets never lose magnetism and are used to secure the door. Standard filter housing models are able to accommodate a 1" or 2" filter, or ask about our deluxe filter housing made to accommodate 4" filters.



Above: Inside Standard Filter Housing.
Rails for 1" or 2" filters.



*Door is on the "width" side.

Right: Inside Deluxe Filter
Housing. Rails for 4" filter.



*Ask us about our Specialty 4" Deluxe Filter Housing.

FILTER HOUSING SIZES

PART NUMBER	1" OR 2" FILTER * FILTER HOUSING W* x D
433207	F/H 17.5" x 21" (16" x 20" Filter)
344211	F/H 18.5" x 21" (16" x 20" Filter)
344213	F/H 21.0" x 21" (18" x 20" Filter)
433214	F/H 21.5" x 21" (20" x 20" Filter)
433218	F/H 23.5" x 21" (22" x 20" Filter)
433221	F/H 24.5" x 21" (22" x 20" Filter)
433228	F/H 26.5" x 21" (25" x 20" Filter)
433230	F/H 14.5" x 22" (12" x 20" Filter)
433236	F/H 17.5" x 22" (16" x 20" Filter)
433238	F/H 18.0" x 22" (16" x 20" Filter)
433243	F/H 21.0" x 22" (18" x 20" Filter)
433245	F/H 21.5" x 22" (20" x 20" Filter)
433249	F/H 23.5" x 22" (22" x 20" Filter)
433251	F/H 24.5" x 22" (22" x 20" Filter)
433254	F/H 25.0" x 22" (22" x 20" Filter)
433257	F/H 22.0" x 24" (20" x 22" Filter)

The Metal Shop products provide a virtually seamless installed stacked system.



The picture above features an AHU with The Metal Shop Fully insulated Filter Housing, An Insulated Metal Return Air Stand and the 4" Adjustable Mini Stand. The Metal Shop Products are manufactured to fit **your brand** Air Handler Unit.

DRAIN PANS WITH RAILS



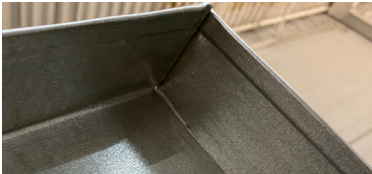
DRAIN PANS WITH RAILS

Constructed of G-90 galvanized steel with a 2" wall height, 3/4" PVC Drain Installed. Rails are 4" High.

PART NUMBER	DRAIN PAN WITH RAILS	D x W SIZE
010181	DP2648 DRAIN PAN WITH RAILS	26" x 48"
010185	DP2650 DRAIN PAN WITH RAILS	26" x 50"
010193	DP2654 DRAIN PAN WITH RAILS	26" x 54"
010195	DP2656 DRAIN PAN WITH RAILS	26" x 56"
010198	DP2658 DRAIN PAN WITH RAILS	26" x 58"
010200	DP2662 DRAIN PAN WITH RAILS	26" x 62"
010202	DP2660 DRAIN PAN WITH RAILS	26" x 60"
010204	DP2668 DRAIN PAN WITH RAILS	26" x 68"
010212	DP2860 DRAIN PAN WITH RAILS	28" x 60"
010216	DP3060 DRAIN PAN WITH RAILS	30" x 60"
010218	DP3066 DRAIN PAN WITH RAILS	30" x 66"



Drain Pans With and Without Rails Have Folded Corners For A Watertight Seal.

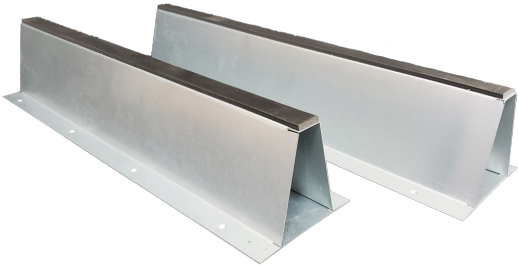
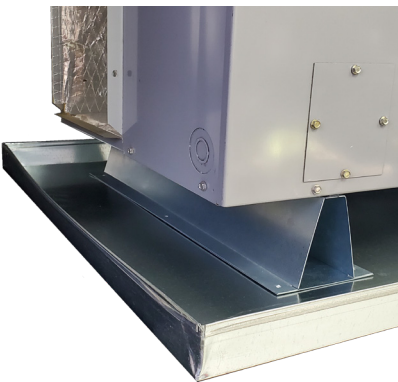


PYRAMIDS

PYRAMIDS

The Metal Shop designed and developed PYRAMIDS with durability, longevity and simplicity in mind. Foam blocks are often a food choice for bugs and critters and simply just don't hold up to environmental conditions like heat and humidity.

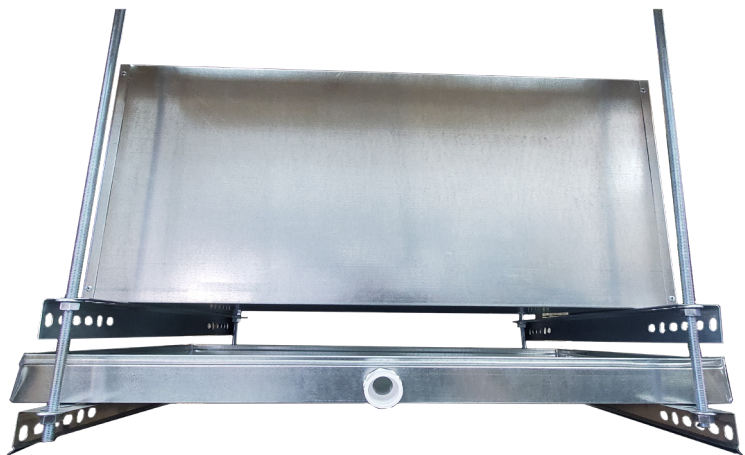
Use these non-combustible, 22 ga. G-90 galvanized steel PYRAMIDS to solve the problem of getting the AHU up out of the auxiliary drain pan. PYRAMIDS have ZERO absorption of moisture and come complete with neoprene tape along the top for vibration isolation.



Use Pyramids with the auxiliary drain pan instead of the drain pan with rails.

PART NUMBER	PYRAMIDS
010400	4" HIGH x 22" LONG

THREADED ROD HANGING KITS

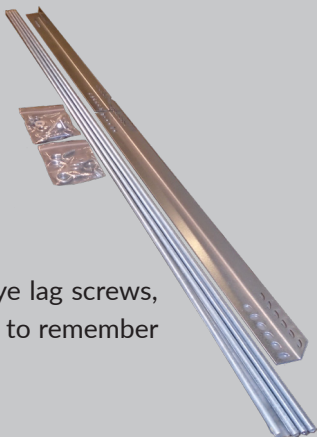


Pictured is the 3/8" Threaded Rod Kit and the Add-On Auxiliary Drain Pan Kit with the Auxiliary Drain Pan

THREADED ROD HANGING KITS

Horizontal AHU installations in attics or garages require suspending the equipment and the Threaded Rod Kit includes all the hardware needed to safely and easily complete your install.

With all the nuts, threaded eye bolts, the pre-cut rod, eye lag screws, and the rest of the installation hardware, you won't have to remember the list or be up and down looking for anything.



Kit Includes:

- 4 - 6 foot ATR
- 2 - 32" 14 ga. Slotted Angles
- 8 - Nuts and Washers
- 4 - Large Fender Washers
- 4 - Threaded Eye Bolts w/ Nuts
- 4 - 1 1/2" Eye Lag Screws

PART NUMBER	THREADED ROD KIT & ADD ON KIT
008376	1/4" THREADED ROD KIT
008378	3/8" THREADED ROD KIT
008380	ADD ON DRAIN PAN KIT (use with 1/4" or 3/8" Threaded Rod Kits) 32" 26 GA. SLOTTED ANGLE WITH NUTS AND WASHERS.

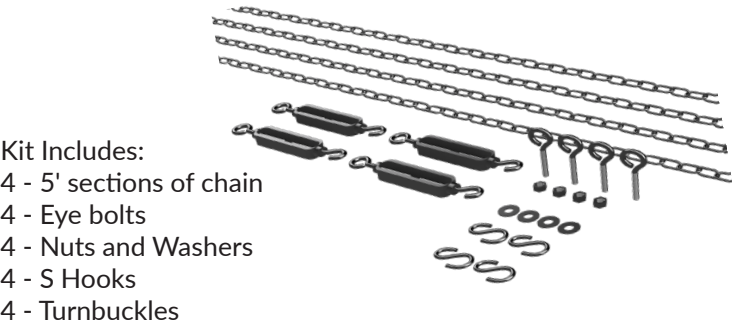
CHAIN HANGING KITS



Pictured is The Chain Hanging Kit with the Auxiliary Drain Pan with Rails.

CHAIN HANGING KITS

Attic and garage hanging installations just got a whole lot simpler with The Metal Shop Chain Hanging Kits. This complete kit provides everything you need and will save on installation time.



PART NUMBER	CHAIN HANGING KIT
008374	1/4" CHAIN HANGING KIT
008375	3/8" CHAIN HANGING KIT

ENGINEERED CONDENSER STANDS



ENGINEERED ALUMINUM STANDS

Engineered for strength, this all Aluminum Condenser Stand can be used on a roof top or on a pad for flood zone applications.

I-Beam conveniently slides into rail guides on the top of the leg sets. Available in both 18" High Legs or 24" High Legs and I-Beam sizes from 3' to 18' with sets large enough to accommodate up to six units.

Adjustable width from 21.5" to 30" and available in 18" or 24" H Legs

PART NUMBER	ENGINEERED ALUMINUM ROOF CONDENSER STAND SOLD IN SETS	NUMBER OF CONDENSERS SUPPORTED
7-603	24" LEGS 2 - 3' I-BEAMS 2 SETS OF LEGS	1
7-606	24" LEGS 2 - 6' I-BEAMS 2 SETS OF LEGS	2
7-609	24" LEGS 2 - 9' I-BEAMS 3 SETS OF LEGS	3
7-612	24" LEGS 2 - 12' I-BEAMS 4 SETS OF LEGS	4
7-615	24" LEGS 2 - 15' I-BEAMS 5 SETS OF LEGS	5
7-618	24" LEGS 2 - 18' I-BEAMS 6 SETS OF LEGS	6
7-633	18" LEGS 2 - 3' I-BEAMS 2 SETS OF LEGS	1
7-636	18" LEGS 2 - 6' I-BEAMS 2 SETS OF LEGS	2
7-639	18" LEGS 2 - 9' I-BEAMS 3 SETS OF LEGS	3
7-642	18" LEGS 2 - 12' I-BEAMS 4 SETS OF LEGS	4
7-645	18" LEGS 2 - 15' I-BEAMS 5 SETS OF LEGS	5

INDIVIDUAL ALUMINUM LEGS & I-BEAMS

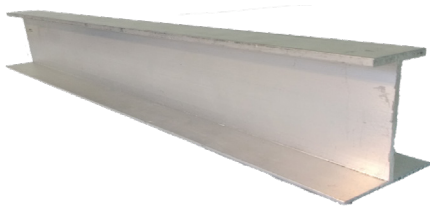


ENGINEERED ALUMINUM STAND LEG SETS

The Metal Shop Engineered Aluminum Stand Legs are available in heights from 18" to 36".

Heavy Duty Aluminum with fully welded construction. Each pair is adjustable from 21.5" to 30" and each has I-Beam rail guides for easy assembly.

PART NUMBER	LEG HEIGHT
7-622	18 in.
7-623	21 in.
7-624	24 in.
7-620	30 in.
7-621	36 in.



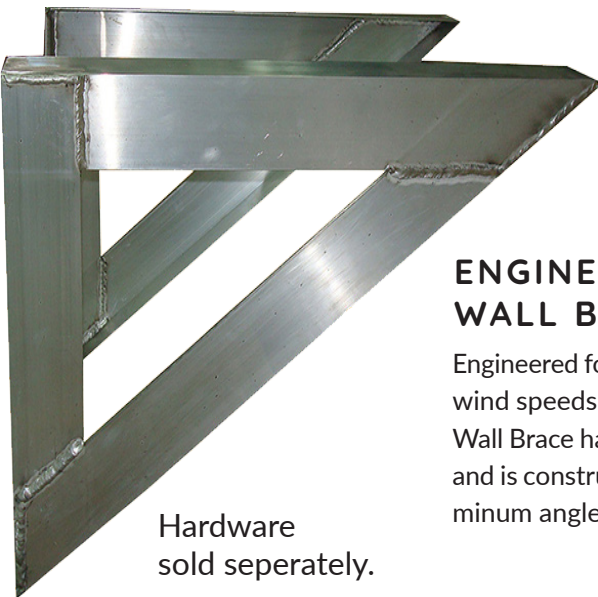
ALUMINUM I-BEAM

The Metal Shop Aluminum I-Beams are sold in pre-cut lengths and fit securely into the clips of the Engineered Aluminum Stand Legs.

PART NUMBER	I BEAM SIZE
7-625	3 Ft.
7-626	6 Ft.
7-627	9 Ft.
7-628	12 Ft.
7-629	15 Ft.
7-630	18 Ft.



ENGINEERED ALUMINUM WALL BRACE



ENGINEERED ALUMINUM WALL BRACE

Engineered for strength and built to withstand wind speeds up to 186 mph. This Aluminum Wall Brace has MIG welded joints and seams, and is constructed out of 0.125" x 3" x 3" aluminum angle. Holds up to 400 Lbs.

Hardware
sold separately.

PART NUMBER	ENGINEERED ALUMINUM WALL BRACE
7-845	30" H x 36" L ENGINEERED ALUMINUM WALL BRACE
7-850	36" H x 48" L ENGINEERED ALUMINUM WALL BRACE



ENGINEERED ALUMINUM WALL BRACE KIT

Perfect for Mini-Split systems or small condensers. The 7-840 Engineered Wall Brace Kit is packaged with our Engineered Anchor Clips with Screws Item # 008771S shown on page 20.

PART NUMBER	ENGINEERED WALL BRACE KIT
7-840	18" H x 24" L ENGINEERED WALL BRACE KIT

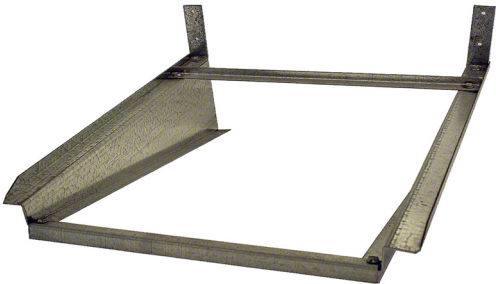
ENGINEERED HURRICANE AIR BRACE



ENGINEERED HURRICANE

Simply genius way to secure your equipment. The Engineered Hurricane Air Brace provides a strong 16 ga. galvanized steel right and left bracket, 10 ga. mounting plates, and includes all the hardware needed to assemble. Front and back supports can be cut to width in the field.

Engineered for Hurricane Strength wind up to 186 MPH when installed at or below 30' on a wall constructed of concrete block or brick, concrete, steel stud, or wood structure. Weight load allowable to 375 lbs. and up to 425 lbs. when installing on a concrete wall. Engineering documentation available upon request.

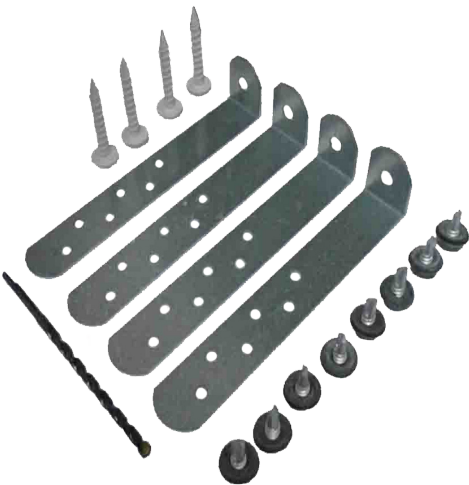


Packaging includes 16 ga. left and right bracket, top and front cross supports, 2 each 10 ga. mounting plates, (washer plates for 45" and 55" size air brace) 4 galvanized nuts and bolts, 8 washers, 26 self-tapping screws, 6 straps 1" x 6" 16 ga. G90.

PART NUMBER	ENGINEERED WALL BRACE*
002600	36" x 30" W STEEL ENGINEERED AIR BRACE
002605	45" x 36" W STEEL ENGINEERED AIR BRACE W/WASHER PLATE
002610	55" x 48" W STEEL ENGINEERED AIR BRACE W/WASHER PLATE

* Stainless Steel Available Upon Request.

ENGINEERED ANCHOR CLIPS



ENGINEERED ANCHOR CLIPS

Available in 4" & 6" and can withstand 196 MPH wind with 3 second gusts. Made with 16 ga. galvanized steel. Engineering specs available. Clips can be purchase with or without the kit contents.

Deluxe Kit Includes:

- 4 - Clips
- 8 - Screws
- 4 - Tapcons
- 1 - Drill bit

The Metal Shop G90
Engineered Clips won't rust
and break.

Anchor your equipment with
clips designed to last.



PART NUMBER	ENGINEERED ANCHOR CLIPS
008770	4" DELUXE KIT (4 CLIPS - SCREWS - DRILL BIT- TAPCON)
008771	4" COND TIE DOWN 1 x 4 - (4 CLIPS)
008772	4" COND TIE DOWN 1 x 4 BOX QTY OF 100
008773	6" COND TIE DOWN 1 x 6 - (4 CLIPS)
008774	6" DELUXE KIT (4 CLIPS - SCREWS - DRILL BIT- TAPCON)
	COND CLIPS ARE SOLD IN BOX OF 50 (DOES NOT APPLY TO 008772)

ADJUSTABLE CONDENSER CAGE



ADJUSTABLE CONDENSER CAGE

Designed For Maximum protection from theft and damage, this adjustable condenser cage is constructed out of 16 ga. tube steel and is packaged/shipped unassembled (knocked down). This easy to assemble condenser cage is powder coated and adjusts to fit most size condensers.

Inner Dimensions

Width: 30" to 46"
Depth: 30" to 46"
Height: 30", 39" & 48"

PART NUMBER	ADJUSTABLE CONDENSER CAGE	SIZE WIDE	SIZE DEEP	SIZE HIGH
004530	POWDER COATED	ADJ. 30-46"	ADJ. 30-46"	ADJ. 30", 39", 48"

LOOKING FOR MORE INFORMATION?

The Metal Shop Website is loaded with information on our entire product line.

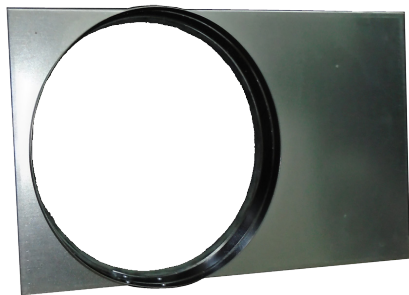
We invite you to bookmark MetalShop.org and join our email list. The Metal Shop sends a monthly email to keep you up to date on products and promotions.

Contractors and installers alike will find solutions to common installation problems by getting familiar with The Metal Shop product line. Most of The Metal Shop products are designed to be used with each other and are manufactured to fit most AHU system brands.

PACKAGE UNIT ADAPTERS

SQUARE-TO-ROUND PACKAGE UNIT DUCT ADAPTERS

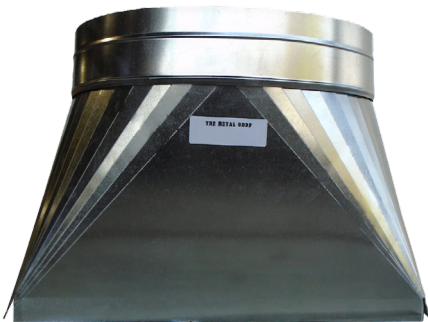
Easily convert your package unit from square to round with this duct adapter. 26 ga. galvanized steel with a 3" beaded collar sealed to the body, and insulated with 1" duct liner.



*Ask about additional sizes

PART NUMBER	SIZE*
002331	14.00" x 20.00" TO 14" RND.
001332	14.75" x 14.75" TO 14" RND.
001333	14.75" x 18.25" TO 14" RND.
001334	22.25" x 14.25" - 14.25" + 14.25" SQ. TO 14.00" RND. (Set)
001335	24.25" x 14.25" - 14.25" + 14.25" SQ. TO 14.00" RND. (Set)
001336	14.75" x 24.25" TO 14.00" RND.
001338	16.00" x 16" TO 14.00" RND.
001339	16.00" x 18" TO 14.00" RND.
001340	14.50" x 14.50" - 14" + 14.50" x 17.25" TO 14" RND. (Set)
001341	18.125" x 14.50" - 14" + 18.125" x 17.25" TO 14.00" RND. (Set)
001342	17.00" x 15.00" TO 14.00" RND.
001343	12.50" x 16.75" TO 12.00" RND.

TAPERED PLENUMS



TAPERED SQUARE TO ROUND SUPPLY PLENUM

The tapered supply plenum is constructed of 26 ga. Galvanized Steel. The collar is sealed to the body. Supply Plenum has a beaded 3" collar for a tight flex duct connection. Manufactured to fit a variety of equipment brands. Sized to fit the air handler unit discharge opening.

PART NUMBER	MANUFACTURER SIZE
001105	12.50" x 11.00" - 14" RND
001111	13.00" x 12.75" - 16" RND
001117	13.00" x 18.25" - 16" RND
001118	13.00" x 18.25" - 18" RND
001123	13.00" x 21.00" - 18" RND
001129	15.75" x 11.00" - 16" RND
001135	16.00" x 10.50" - 16" RND
001141	16.50" x 11.50" - 16" RND
001147	19.25" x 11.00" - 16" RND
001148	19.25" x 11.00" - 18" RND
001153	19.50" x 10.50" - 16" RND
001154	19.50" x 10.50" - 18" RND
001158	20.00" x 11.50" - 16" RND
001159	20.00" x 11.50" - 18" RND
001164	22.75" x 11.00" - 18" RND
001165	22.75" x 11.00" - 20" RND
001170	23.00" x 10.50" - 18" RND
001176	23.50" x 11.50" - 18" RND



FIBERGLASS PLENUM

PLENUM

The Metal Shop R6 Fiberglass Plenum is 4 ft tall and ships unassembled (knocked down). Plenums are constructed with OC duct board.

Sized for air handler unit discharge air opening.



Unassembled plenum includes end cap, UL tape and squeegee.

FIBERGLASS PLENUM SIZES

Never Buy Flat Duct board Again!

Ask Your Supplier for The Metal Shop Knocked Down Plenum.

Already cut to size and easy to assemble. No Mess! No Fuss! Includes everything you need for assembly. Easy to transport and easy to store.

PART NUMBER	FIBERGLASS PLENUM W x D (ID) -- ALL ARE 4 FOOT
500105	#850 PLENUM 12.50" x 11.00" ID - 4FT
500125	#850 PLENUM 14.50" x 18.00" ID - 4FT
500127	#850 PLENUM 15.50" x 17.50" ID - 4FT
500129	#850 PLENUM 15.75" x 11.00" ID - 4FT
500135	#850 PLENUM 16.00" x 10.50" ID - 4FT
500141	#850 PLENUM 16.50" x 11.50" ID - 4FT
500145	#850 PLENUM 18.50" x 18.00" ID - 4FT
500147	#850 PLENUM 19.25" x 11.00" ID - 4FT
500153	#850 PLENUM 19.50" x 10.50" ID - 4FT
500158	#850 PLENUM 20.00" x 11.50" ID - 4FT
500159	#850 PLENUM 20.50" x 17.50" ID - 4FT
500160	#850 PLENUM 20.50" x 18.00" ID - 4FT
500164	#850 PLENUM 22.75" x 11.00" ID - 4FT
500170	#850 PLENUM 23.00" x 10.50" ID - 4FT
500176	#850 PLENUM 23.50" x 11.50" ID - 4FT
500182	#850 PLENUM 23.50" x 17.50" Id - 4FT

Manufactured
For Use With Your Equipment

The Goodman logo is a red rectangle with white text. The Amana logo features the word 'Amana' in a stylized red font with 'Heating & Air Conditioning' in smaller black text above it. The Carrier logo is a blue oval with white text. The ICP logo has 'ICP' in large blue letters with a starburst graphic. The Rheem logo is a red circle with white text. The RUUD logo is a red rectangle with white text. The Trane logo consists of a red circle with a white 'T' and the word 'TRANE' in red. The American Standard logo has 'American Standard' in blue script with 'HEATING & AIR CONDITIONING' in small black text below. The Lennox logo is a red oval with white text. The Nordyne logo is the word 'NORDYNE' in large, bold, black capital letters.

Eliminate wrong cuts, mistakes, scrap/drop/waste and let The Metal Shop do the cutting and cleaning. Pre-Cut Plenums Save Time and Material.

The Metal Shop provides contractors with quality air handler installation products made right here in the United States of America.

Ask for products made by The Metal Shop for your next installation and you will use them for every installation.

FIBERGLASS TRIANGLES AND REDUCERS



**R6 FIBERGLASS
TRIANGLE**



**R6 FIBERGLASS
REDUCER**

Both the R6 Fiberglass Triangle and the R6 Fiberglass Reducers ship fully assembled or knocked down (unassembled). The Triangle and the Reducer are constructed with R6 anti-microbial duct board and available in several sizes.



AVAILABLE AND READY TO SHIP FOR YOUR NEXT INSTALLATION.

FIBERGLASS TRIANGLE & REDUCER SIZES

PART NUMBER	R6 FIBERGLASS TRIANGLE	OD SIZES
500816	SMALL TRIANGLE	15" x 15" x 15" - 12" H
500817	SMALL KNOCKED DOWN	15" x 15" x 15" - 12" H
500818	MEDIUM TRIANGLE	15" x 15" x 15" - 15" H
500819	MEDIUM KNOCKED DOWN	15" x 15" x 15" - 15" H
500820	LARGE TRIANGLE	19" x 19" x 19" - 18" H
500821	LARGE KNOCKED DOWN	19" x 19" x 19" - 18" H
500822	XTRA LARGE TRIANGLE BOX	19" x 19" x 19" - 24" H
500823	XTRA LARGE KNOCKED DOWN	19" x 19" x 19" - 24" H

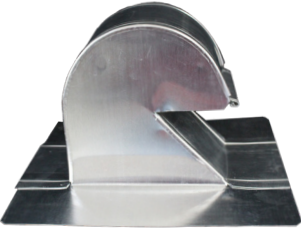
PART NUMBER	R6 FIBERGLASS REDUCER	OD SIZES
500836	SMALL CUBE	12" x 12" - 12" x 12" - 12" T
500837	SMALL CUBE KNOCKED DOWN	12" x 12" - 12" x 12" - 12" T
500840	LARGE REDUCER	18" x 16" - 16" x 14" - 14" T
500841	LARGE REDUCER KNOCKED DOWN	18" x 16" - 16" x 14" - 14" T
500842	XTRA LARGE REDUCER	20" x 20" - 20" x 16" - 17" T
500843	XTRA LG KNOCKED DOWN	20" x 20" - 20" x 16" - 17" T
500844	BIGMAC REDUCER	24" x 24" - 24" x 18" - 16" T



ROOF VENTS

ROOF VENTS

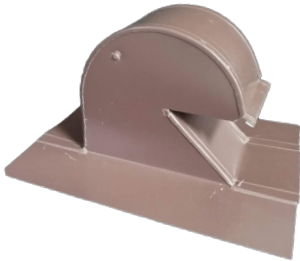
Available in sizes 4" through 10" and each is also available in Tall and Extra Tall Hights. Choose from Aluminum, Galvanized Steel, True Copper, or Galvalume. Available with screen, damper, or both screen and damper and can also be ordered with a collar.



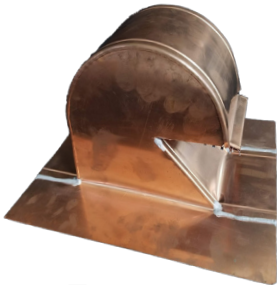
Aluminum



Galvanized



Brown



True Copper



With Collar



Tall and Extra Tall



Available With A Screen,
A Damper or Both
Screen And Damper

ROOF VENTS GALVANIZED

PART NUMBER	GALVANIZED ROOF VENTS	CASE QUANTITY
006100	GRV-4 ROOF VENT	24 PER CASE
006101	GRV-4C ROOF VENT - 3" COLLAR	18 PER CASE
006102	GRV-4D ROOF VENT	24 PER CASE
006102S	GRV-4DS ROOF VENT	24 PER CASE
006103	GRV-4C ROOF VENT - 4" COLLAR	18 PER CASE
006105	GRV-4DC ROOF VENT - 4" COLLAR	18 PER CASE
006105S	GRV-4DCS ROOF VENT - 4" COLLAR	18 PER CASE
006107	GRV-4T ROOF VENT	18 PER CASE
006109	GRV-4TD ROOF VENT	18 PER CASE
006111	GRV-4TDC ROOF VENT - 4" COLLAR	12 PER CASE
006113	GRV-4XT ROOF VENT	10 PER CASE
006114	GRV-4XTD ROOF VENT	10 PER CASE
006116	GRV-4XTDC ROOF VENT - 4" COLLAR	10 PER CASE
006116S	GRV-4XTDCS ROOF VENT - 4" COLLAR	10 PER CASE
006118	GRV-6 ROOF VENT	16 PER CASE
006119	GRV-6D ROOF VENT	16 PER CASE
006119S	GRV-6DS ROOF VENT	16 PER CASE
006120	GRV-6DC ROOF VENT - 6" COLLAR	8 PER CASE
006122	GRV-6T ROOF VENT	8 PER CASE
006124	GRV-6TD ROOF VENT	8 PER CASE
006126	GRV-6TDC ROOF VENT - 6" COLLAR	4 PER CASE
006130	GRV-10 ROOF VENT	6 PER CASE
006131	GRV-10D ROOF VENT	6 PER CASE
006133	GRV-10DC ROOF VENT - 7" COLLAR	4 PER CASE
006134	GRV-10DC ROOF VENT - 10" COLLAR	4 PER CASE
006135	GRV-10T ROOF VENT	4 PER CASE
006137	GRV-10TD ROOF VENT	4 PER CASE
006138	GRV-10TC ROOF VENT - 10" COLLAR	4 PER CASE

Key: GRV = Galvanized, S = Screen, D = Damper, C = Collar, T = Tall, XT = Extra Tall

ROOF VENTS ALUMINUM & GALVALUME

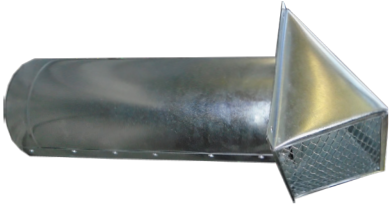


PART NUMBER	ALUMINUM ROOF VENTS	CASE QUANTITY
006140	ARV-4 ROOF VENT	24 PER CASE
006142	ARV-4D ROOF VENT	24 PER CASE
006142S	ARV-4DS ROOF VENT	24 PER CASE
006144	ARV-4DC ROOF VENT - 4" COLLAR	18 PER CASE
006146	ARV-4T ROOF VENT	18 PER CASE
006148	ARV-4TD ROOF VENT	18 PER CASE
006148S	ARV-4TDS ROOF VENT	18 PER CASE
006150	ARV-4TDC ROOF VENT - 4" COLLAR	12 PER CASE
006151	ARV-4XTD ROOF VENT	10 PER CASE
006152	ARV-6 ROOF VENT	16 PER CASE
006154	ARV-6D ROOF VENT	16 PER CASE
006156	ARV-6DC ROOF VENT - 6" COLLAR	8 PER CASE
006158	ARV-10 ROOF VENT	6 PER CASE
006160	ARV-10D ROOF VENT	6 PER CASE
006162	ARV-10DC ROOF VENT - 10" COLLAR	4 PER CASE
006165	ARV-10T ROOF VENT	4 PER CASE
006166	ARV-10TD ROOF VENT	4 PER CASE
006168	ARV-10XTD ROOF VENT	4 PER CASE

Key: ARV = Aluminum, S = Screen, D = Damper, C = Collar, T = Tall, XT = Extra Tall

PART NUMBER	BROWN GALVALUME ROOF VENTS	CASE QUANTITY
006170	ARV-4DB BROWN RV GAVALUME	24 PER CASE
006172	ARV-10DB BROWN RV GAVALUME	6 PER CASE

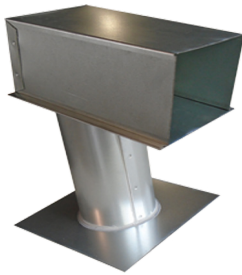
WALL VENTS & LINE JACKS



WALL VENTS

Available in 26 ga. galvanized steel and aluminum. Sizes from 4" to 10" and comes with screen and damper.

PART NUMBER	WALL VENTS	CASE QUANTITY
006175	GWV-4 WALL VENT - S/D	24 PER CASE
006176	GWV-5 WALL VENT - S/D	12 PER CASE
006177	GWV-6 WALL VENT - S/D	12 PER CASE
006178	GWV-7 WALL VENT - S/D	12 PER CASE
006179	GWV-8 WALL VENT - S/D	6 PER CASE
006180	GWV-10 WALL VENT - S/D	4 PER CASE
006181	GWV 3.25 X 10 WALL VENT - S/D	24 PER CASE
006184	AWV-4 ALUM WALL VENT - S/D	24 PER CASE
006185	AWV-5 ALUM WALL VENT - S/D	12 PER CASE
006186	AWV-6 ALUM WALL VENT - S/D	12 PER CASE
006187	AWV-7 ALUM WALL VENT- S/D	12 PER CASE
006188	AWV-8 ALUM WALL VENT - S/D	6 PER CASE
006189	AWV-10 ALUM WALL VENT- S/D	4 PER CASE
006190	AWV - 3.25 X 10 ALUM WALL VENT -S/D	24 PER CASE



LINE JACKS

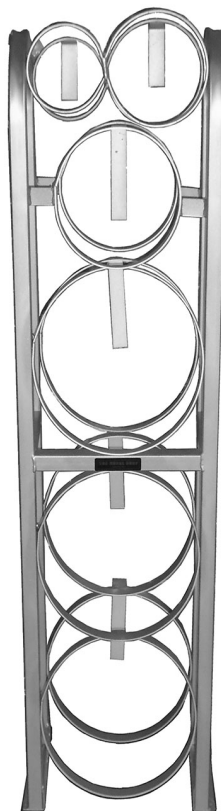
Available in sizes 5", 7", and 10"
Sealed Seams. Removable hood for easy installation.
Constructed out of 26 ga. galvanized steel.

PART NUMBER	LINE JACK	CASE QUANTITY
001575	RJR- 5 5" LINE JACK	12 PER CASE
001577	RJR- 7 7" LINE JACK	8 PER CASE
001578	RJR-10 10" LINE JACK	4 PER CASE

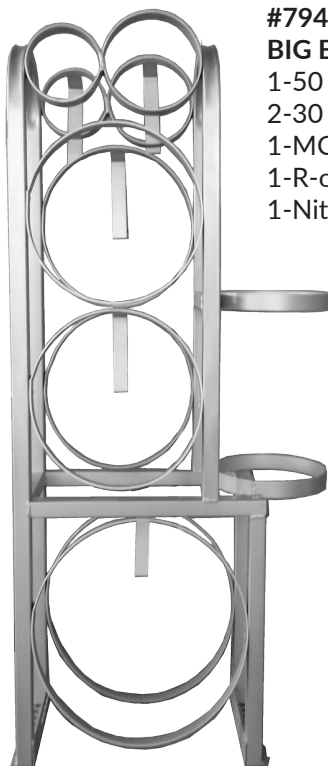
REFRIGERANT TANK RACKS

REFRIGERANT RACKS

Avoid a ticket and secure your tanks with one of The Metal Shops' Refrigerant Tank Racks. Welded using 16 ga. galvanized tube steel, rings made with 12 ga. G90 steel, radius bend for strength and smooth line appearance, with angled rings for additional tank stability.



**#791
JUNIOR**
3-30 lb.
1-MC
1-R-oxy
1-Nit

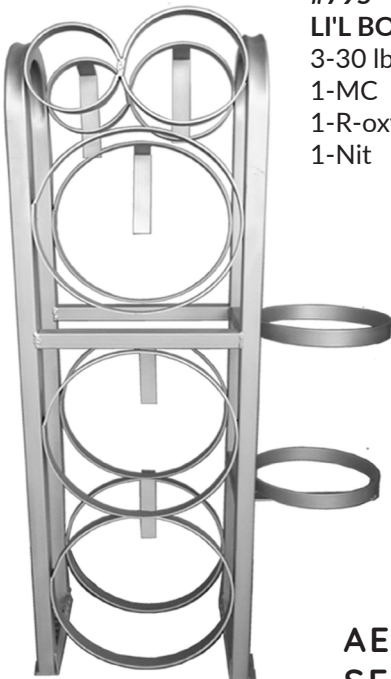


**#794
BIG BOY**
1-50 lb.
2-30 lb.
1-MC
1-R-oxy
1-Nit



**#797
LAZY BOY**
3-30 lb.
1-MC
1-R-oxy

REFRIGERANT TANK RACKS CONT.



**#795
LI'L BOY**
3-30 lb.
1-MC
1-R-oxy
1-Nit



**#796
SHORTY**
3-30 lb.

Quality in
every curve.



AEROSOL & CAULK SERVICE TRUCK HOLDER

Helps organize your aerosol cans. Made with 24 ga. galvanized steel and can be mounted on shelving or on doors. (001835)



PART NUMBER	REFRIGERANT RACKS	SIZE
004791	TANK STAND "JUNIOR"	48" H x 13" W x 12" D
004794	TANK STAND "BIG BOY"	45" H x 20" W x 12" D
004795	TANK STAND "LITTLE BOY"	42" H x 20" W x 12" D
004796	TANK STAND "SHORTY"	36" H x 13" W x 12" D
004797	TANK STAND "LAZY BOY"	17" H x 41" W x 12" D
001835	AEROSOL & CAULK HOLDER	4" H x 16" W x 4" D

ADJUSTABLE ROUND CEILING GRILLES



ADJUSTABLE ROUND CEILING GRILLES

Save Time and Money!

Grille and Collar are all you need, no register box required. Simple Installation. Push the grille into the opening and you're done. 360 degree smooth air flow. Available in 4", 5", 6" & 8".

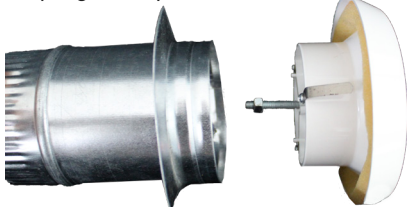
Once you use The Metal Shop adjustable round ceiling grille you will never install anything else.

Why? Simple!

Here are 9 reasons.

1. Cost Less.
2. Easy to Install - Push in installation - no drills or screws.
3. No register box needed.
4. Less Inventory and fewer things to remember.
5. 360 Degree Smooth Air Flow.
6. ABS Plastic - No chipping, No Bending, No Damage.
7. Made with Anti-Static Materials.
8. Reduces Dust & Dirt.
9. Easy To Clean - No Sweating, No Corrosion.

Snap Together. Requires no drills or screws.



Another Reason... Appearance! The Adjustable Round Ceiling Grille looks modern and matches other ceiling mounted fixtures. Your customers will love the look and the benefits the adjustable round grilles provide.



Round Grille
Installation Video

ADJ. GRILLES INSTALLED/SIZES



PART NUMBER	ADJUSTABLE ROUND GRILLE	CASE QUANTITY
005124	ADJ. GRILLE 120 CFM 4" ROUND	15
005125	ADJ. GRILLE 200 CFM 5" ROUND	10
005126	ADJ. GRILLE 300 CFM 6" ROUND	8
005128	ADJ. GRILLE 400 CFM 8" ROUND	4

DRYER VENTILATION & ACCESSORIES



THE DRYERBOX

In-wall dryer connection makes homes safer, roomier, and more efficient. Laundry appliances can be placed flush to the wall without the risk of crushing the hose or restricting airflow. Paintable 22 ga. aluminized steel, easy to install and doubles as a gas connection receptical.

PART NUMBER	DRYERBOX
002200	DB-425 4.25" DEEP MODEL
002201	DB-480 4.25" DEEP XTRA WIDE MODEL
002203	DB-350 3.50" DEEP MODEL

THE DRYER-ELL

Install Dryer-Ells for duct run flexibility and increase efficiency. Replaces restrictive small radius elbows, Code approved. Constructed from .018", 26 ga. aluminized steel with distinct male and female ends.



Zero Run Length Penalty

PART NUMBER	DRYER-ELL - BOX OF 4
002204	90 DEGREE DRY-ELL ELBOW
002206	45 DEGREE DRY-ELL ELBOW



DRYER PLACARD LABEL

Made to last, the 3" X 4" PLAC34 is thick velvet-textured 3M Scotchcal™ 3650-10 substrate with pressure sensitive Hi Tack adhesive that permanently sticks to a wide variety of surfaces including low energy surfaces such as plastics and powder coated paints.

PART NUMBER	DRYER PLACARD
002215	PERMANENT LABEL

DRYER VENTILATION & ACCESSORIES

DRYER WALL VENT

Available in 4 stylish colors, this dryer wall vent is durable and constructed from heavy gauge galvanized steel with powder coating to ensure extended wear and life. Black, Brown, Tan, and White.



PART NUMBER	DRYER WALL VENT
002230W	DRYER WALL VENT DWV4 - WHITE
002230T	DRYER WALL VENT DWV4 - TAN
002230K	DRYER WALL VENT DWV4 - BLACK
002230B	DRYER WALL VENT DWV4 - BROWN



DRYERJACK

DryerJacks are vents designed to meet the more stringent requirements for dryer venting. The position and curvature of the damper combined with collar placement optimize air-flow efficiency.



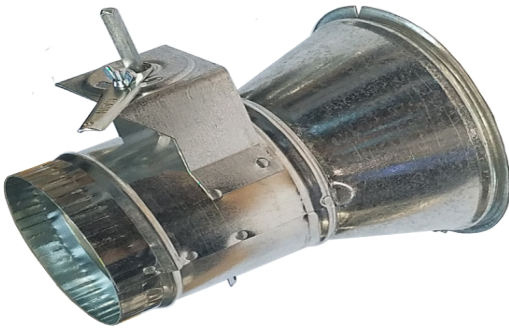
PART NUMBER	DRYERJACK
002240	DRYERJACK DJK466 - GALVANIZED
002241	DRYERJACK DJK466 - BLACK

FLOW DEVICES

FLOW DEVICES

Conical Fittings, Spin-In's, Stick-Ons, Tab-Ins and Transitions by Jer-Air.

Please call us for specific requests.



**ACCESS DOORS
CONICAL TAKEOFFS
SPIN-INS
STICK-ONS
TAB-INS
TRANSITIONS**

**CALL 1-800-441-2491
FOR A QUOTE**

Jer-Air Manufacturing is a family owned and operated manufacturer of quality, wholesale commercial air-conditioning products.

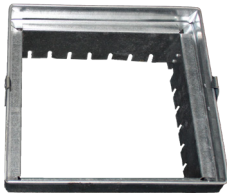
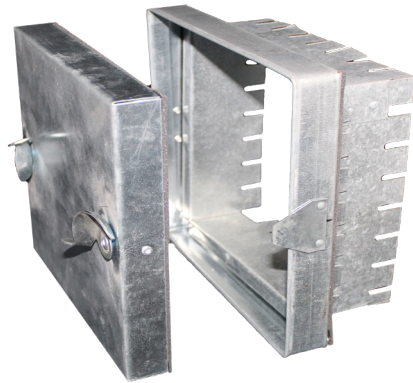
In our 37 years of service, we have combined high quality products with unparalleled customer service to become a leader in our industry.

MADE IN THE USA.



Jer-Air 

ACCESS DOORS



ACCESS DOORS

26 ga. galvanized steel, foam insulated door and Neoprene gasket, with double cammed or hinged closure. Use with both fiberglass and metal duct.

**CALL 1-800-441-2491
FOR A QUOTE**



PART NUMBER	ACCESS DOORS	BOX QUANTITY
010600	AD-C-DB CAMMED 6" x 6"	6
010602	AD-C-DB CAMMED 8" x 8"	6
010604	AD-C-DB CAMMED 10" x 10"	6
010606	AD-C-DB CAMMED 12" x 12"	6
010608	AD-C-DB CAMMED 14" x 14"	4
010610	AD-C-DB CAMMED 16" x 16"	4
010624	AD-C-DB HINGED 6" x 6"	6
010626	AD-C-DB HINGED 8" x 8"	6
010628	AD-C-DB HINGED 10" x 10"	6
010630	AD-C-DB HINGED 12" x 12"	6
010632	AD-C-DB HINGED 14" x 14"	4
010634	AD-C-DB HINGED 16" x 16"	4

COMMERCIAL DUCT PRODUCTS

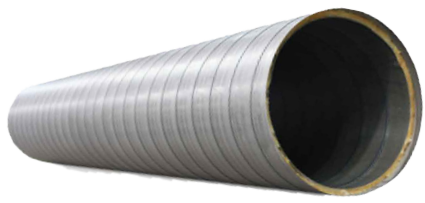
SPIRAL DUCT/SPIRAL PIPE

Commercial duct products are available in galvanized, paint-grip, and stainless steel. Spiral pipe is available in 4" to 30" diameters. Single and Double Wall Spiral Pipe is available in 8' to 10' sections or custom lengths. Double Wall Spiral Pipe supplied with factory installed flanges.

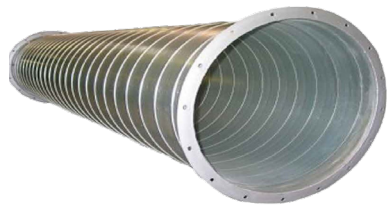
**SINGLE WALL
SPIRAL DUCT**



**INSULATED
SPIRAL DUCT**



**FLANGED
SPIRAL DUCT**



CALL 1-800-4 41-2491 FOR A QUOTE

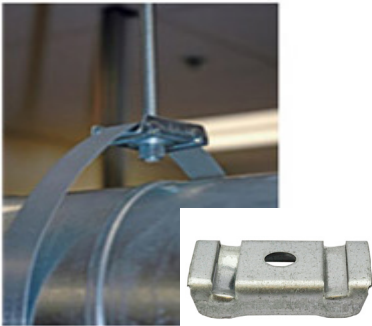


COMMERCIAL DUCT SECURING



DUCT STRAP BRACKET

The ideal way to hang round duct work. This self loading bracket requires no tools and joins the two ends of the galvanized steel strap. Feed strap ends into bracket slots and bend into place. Hanger rod or eye bolt and cable simply screw into the top hole and strap, completely encircles duct, providing superior suspension.



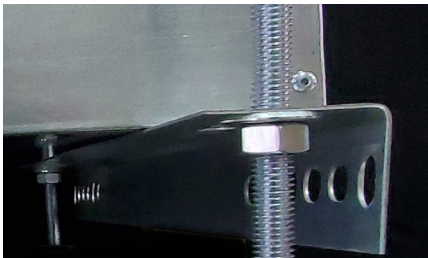
PART NUMBER	DUCT STRAP BRACKET
002622	3/8" ROUND DUCT STRAP BRACKET - BOX OF 50
002626	3/8" ROUND DUCT STRAP BRACKET - BOX OF 200

THREADED ROD HANGING KITS

Commercial duct installation often requires suspending and securing duct work and the Threaded Rod Kit not only suspends the AHU but can also be used for metal and fiberglass rigid duct. Kit includes all the hardware needed to safely and securely complete your duct install.

Kit Includes:

- 4 - 6 foot all threaded rods
- 2 - 32 " 14 ga. slotted angles
- 8 - Nuts and Washers
- 4 - Large Fender washers
- 4 - Threaded eye bolts w/ nuts
- 4 - 1 1/2" eye lag screws



PART NUMBER	THREADED ROD KIT & ADD ON KIT
008376	1/4" THREADED ROD KIT
008378	3/8" THREADED ROD KIT

SCHEDULE A VAN DAY

The Metal Shop enjoys traveling to our Florida Wholesalers' locations for events and demo days.

Contact your account manager or call us at 1-800-441-2491 to schedule The Metal Shop product van at your next event.



WE ALWAYS LIKE TO SEE YOUR WORK SEND PICTURES TO OUR FACEBOOK PAGE

We welcome you to share your photos with us on social media and we enjoy seeing how you have incorporated our products into your installation.

Kindly provide your company name with your photos so we can give your photo the proper credit.



Scan a code and easily navigate through our video library, web-site, facebook, or youtube.



Adjustable Air
Handler Stands



Insulated Return
Air Stands



Coffin Box
Installation Video



Fully Insulated
Magnetic Filter
Housing



Drain Pans &
Hanging Kits



Aluminum
Condenser Stands



Aluminum
Wall Braces



Condenser
Cages



Knocked-Down
Fibergalss
Plenum Assembly



Roof Vents



Refrigerant Tank
Racks



Round Grilles



Visit Our Webiste
www.MetalShop.Org



The Metal Shop
Facebook Page



The Metal Shop
YouTube Channel

Thank You!

“It’s our mission to supply the HVAC contractor with components that will simplify jobs, and create a professional end result.”

