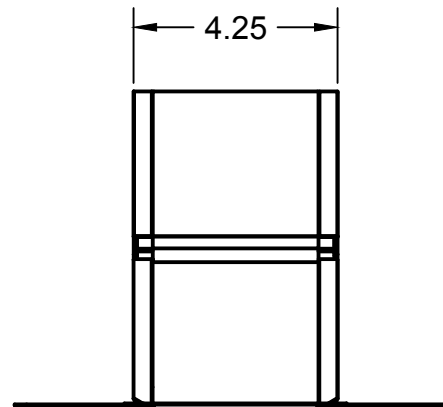
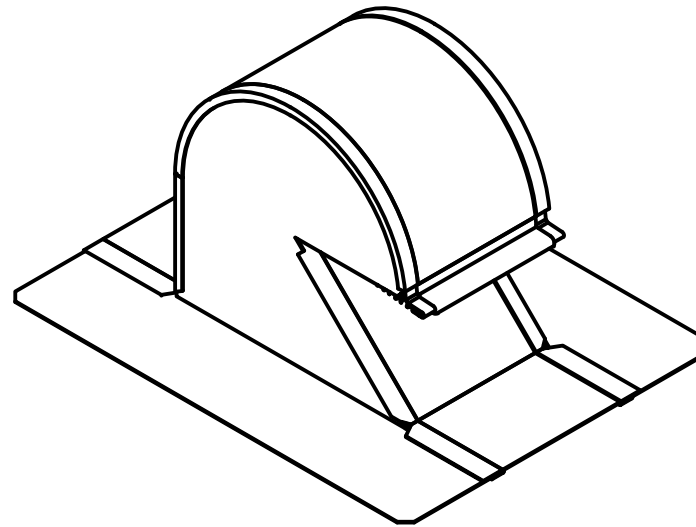
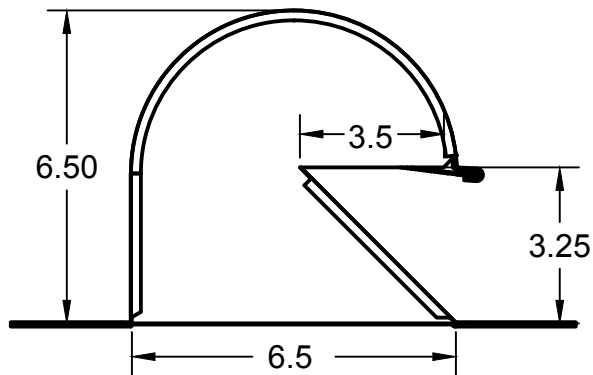
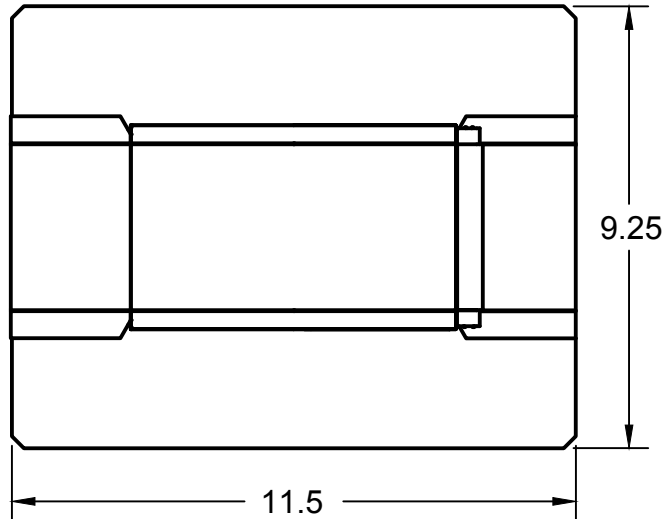


Dimensions in inches



## Size: Standard Height 4" Roof Vent

### PRODUCT DESCRIPTION:

Standard Height 4" Roof Vent  
For residential exhaust air  
applications on shingle roofs.

### PRODUCT DATA:

#### Standard Features:

- 26 Gauge G90 Galvanized Steel
- Pittsburgh Seams
- 2.5" Flashing around base
- Optional Damper & Collar

#### Part numbers:

#006100: GRV-4  
24 per case  
#006101: GRV-4C w/3" Collar  
18 per case  
#006102: GRV-4D  
24 per case  
#006103: GRV-4C w/4" Collar 18  
per case  
#006105: GRV-4DC w/ 4" Collar  
18 per case

Also Available in Aluminum,  
Copper, and Black or Brown

**THE METAL SHOP**

APPROVED

CHECKED

DRAWN Colton Hunt 10/31/2019

SIZE

A

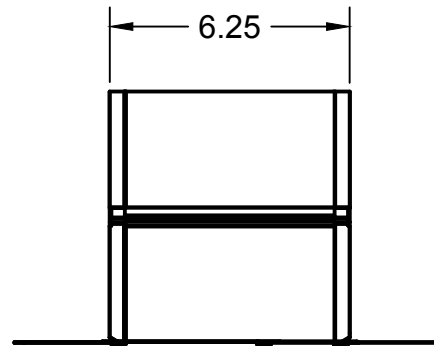
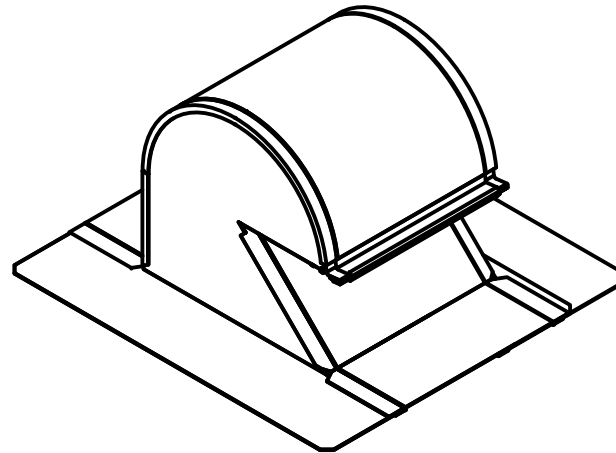
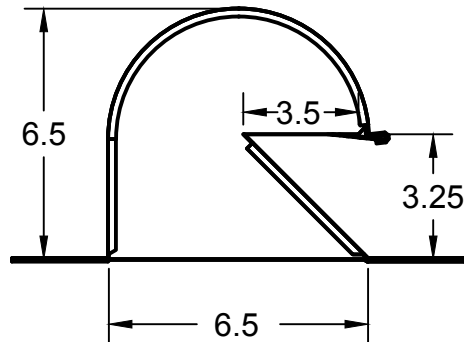
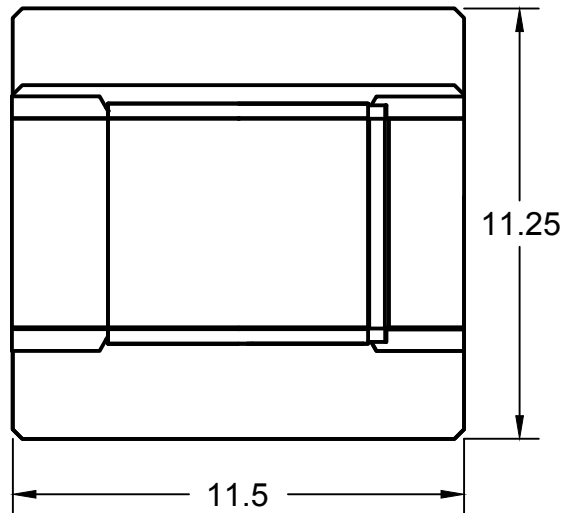
REV

SHEET

1/1

SCALE 1:4

Dimensions in inches



## Size: Standard Height 6" Roof Vent

### PRODUCT DESCRIPTION:

Standard Height 6" Roof Vent  
For residential exhaust air  
applications on shingle roofs.

### PRODUCT DATA:

#### Standard Features:

- 26 Gauge G90 Galvanized Steel
- Pittsburgh Seams
- 2.5" Flashing around base
- Optional Damper & Collar

#### Part numbers:

#006118: GRV-6  
16 per case  
#006119: GRV-6D  
16 per case  
#006120: GRV-6DC w/6" Collar  
8 per case

Also Available in Aluminum,  
Copper, and Black, or Brown

**THE METAL SHOP**

APPROVED

CHECKED

DRAWN Colton Hunt 10/31/2019

SIZE

A

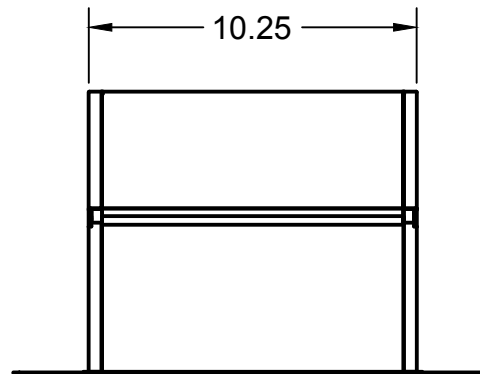
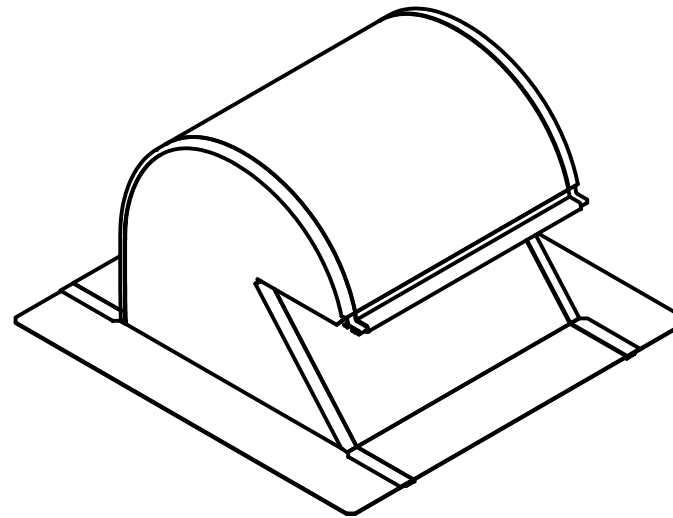
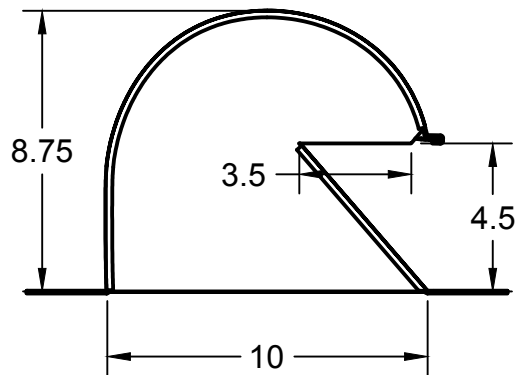
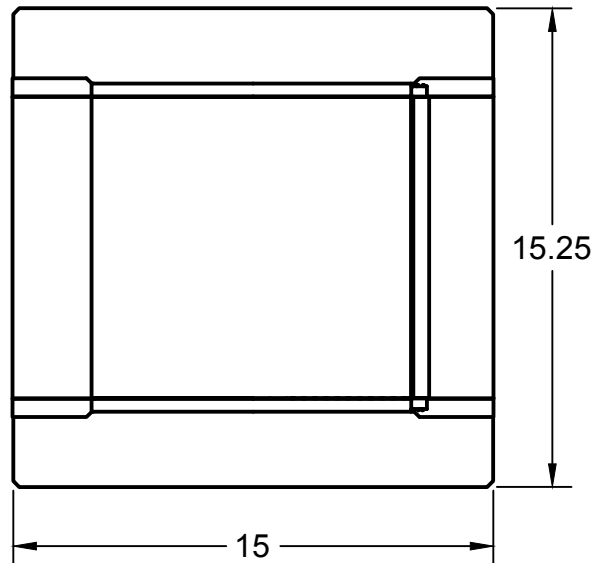
REV

SHEET

1/1

SCALE 1:5

Dimensions in inches



Size:  
**Standard Height 10" Roof Vent**

**PRODUCT DESCRIPTION:**

Standard Height 10" Roof Vent  
For residential exhaust air applications on shingle roofs.

**PRODUCT DATA:**

Standard Features:

- 26 Gauge G90 Galvanized Steel
- Pittsburgh Seams
- 2.5" Flashing around base
- Optional Damper & Collar

**Part numbers:**

#006130: GRV-10  
6 per case  
#006131: GRV-10D  
6 per case  
#006133: GRV-10DC w/7" Collar  
4 per case  
#006134: GRV-10DC w/10" Collar  
4 per case

Also Available in Aluminum,  
Copper, and Black, or Brown

**THE METAL SHOP**

APPROVED

CHECKED

DRAWN Colton Hunt 10/31/2019

SIZE

A

REV

SHEET

1/1

SCALE 1:6

Dimensions in inches

Size:  
**Tall 4" Roof Vent**

PRODUCT  
DESCRIPTION:

Tall 4" Roof Vent  
For residential exhaust air  
applications on shingle and  
barrel tile roofs.

PRODUCT DATA:

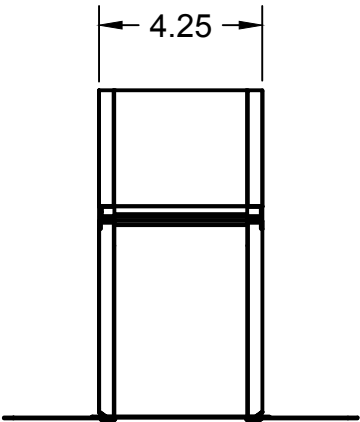
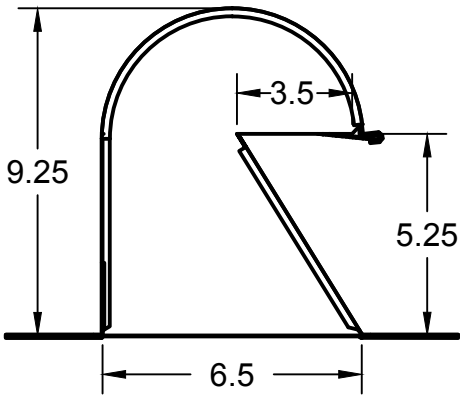
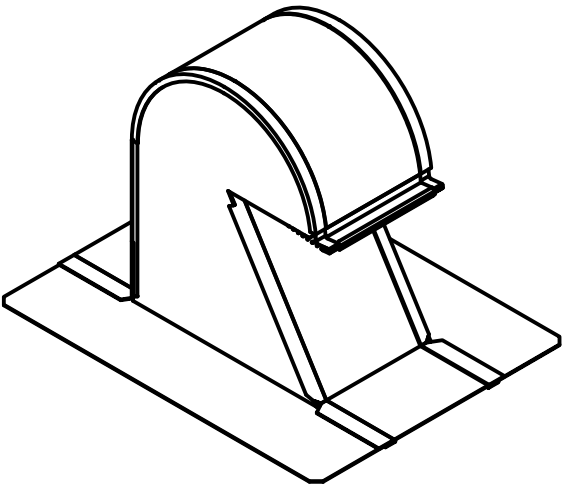
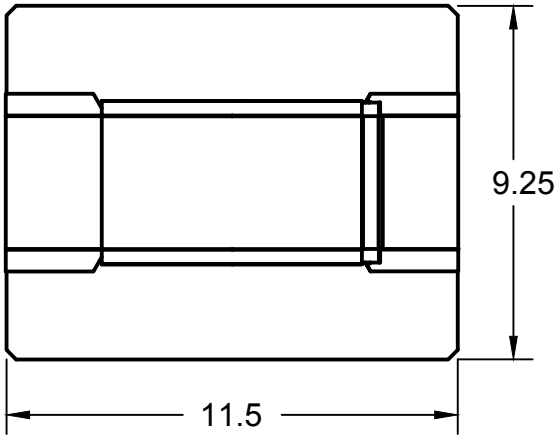
Standard Features:

- 26 Gauge G90 Galvanized Steel
- Pittsburgh Seams
- 2.5" Flashing around base
- Optional Damper & Collar

Part numbers:

#006107: GRV-4T  
18 per Case  
#006109: GRV-4TD  
18 per Case  
#006111: GRV-4TDC w/4" Collar  
12 per Case

Also Available in Aluminum,  
Copper, and Black, or Brown



**THE METAL SHOP**

APPROVED

CHECKED

DRAWN Colton Hunt 10/31/2019

SIZE

A

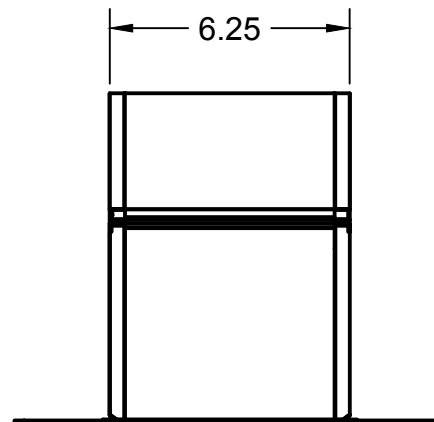
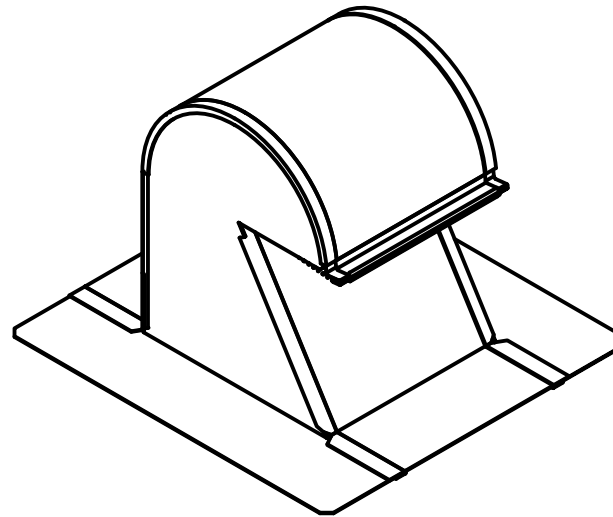
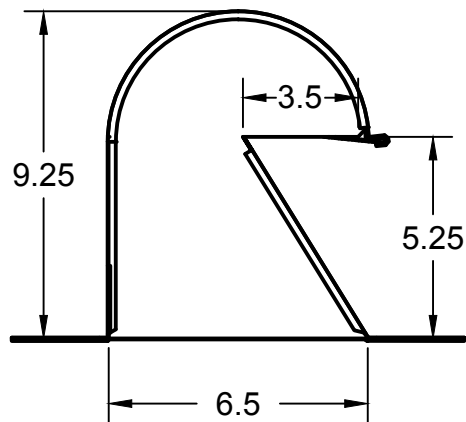
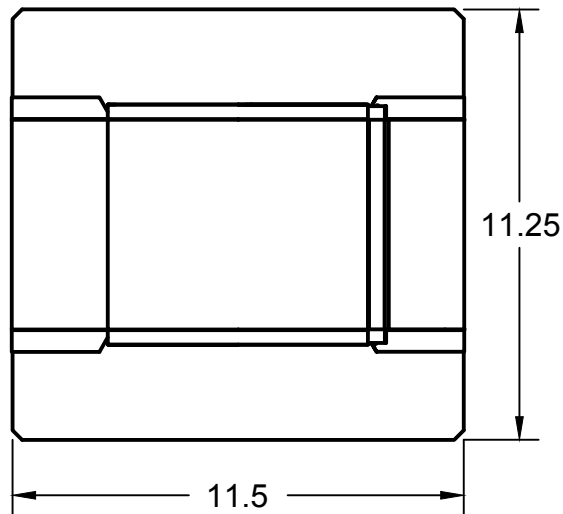
REV

SHEET

1/1

SCALE 1:5

Dimensions in inches



Size:

## Tall 6" Roof Vent

### PRODUCT DESCRIPTION:

Tall 6" Roof Vent  
For residential exhaust air applications on shingle and barrel tile roofs.

### PRODUCT DATA:

#### Standard Features:

- 26 Gauge G90 Galvanized Steel
- Pittsburgh Seams
- 2.5" Flashing around base
- Optional Damper & Collar

#### Part numbers:

#006122: GRV-6T

8 per Case

#006126: GRV\_6TD

8 per Case

#006126: GRV-6TDC w/6" Collar

4 per Case

Also Available in Aluminum,  
Copper, and Black, or Brown

# THE METAL SHOP

APPROVED

CHECKED

DRAWN

Colton Hunt

10/31/2019

SIZE

A

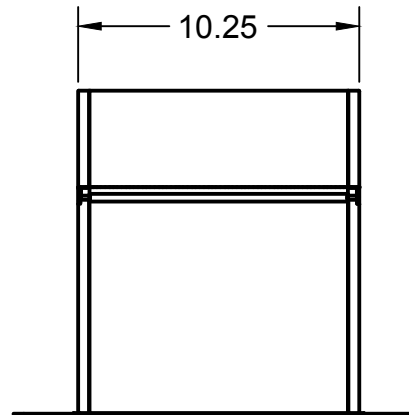
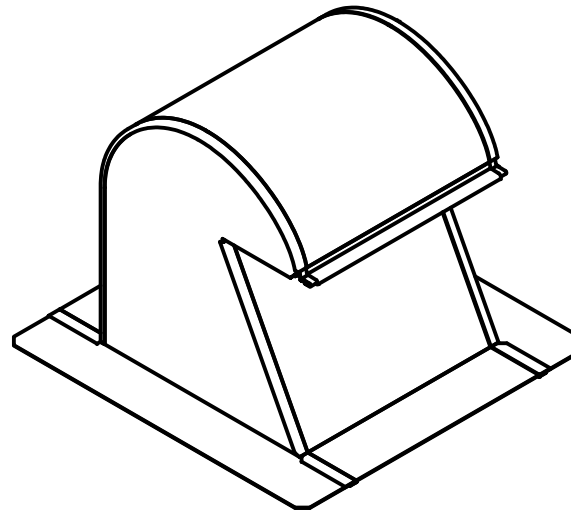
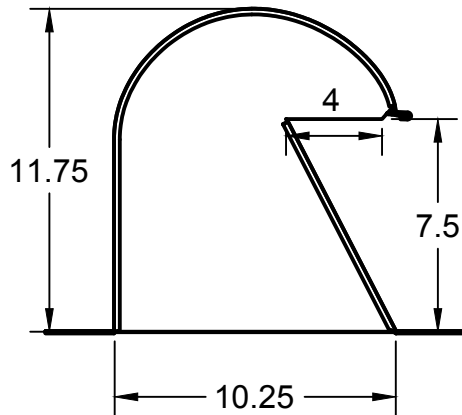
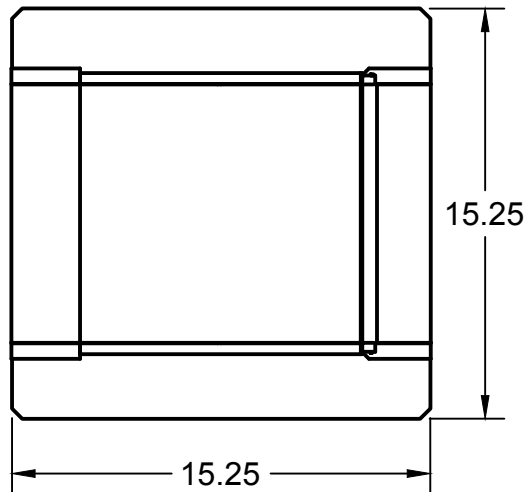
REV

SHEET

1/1

SCALE 1:5

Dimensions in inches



Size:

## Tall 10" Roof Vent

### PRODUCT DESCRIPTION:

Tall 10" Roof Vent  
For residential exhaust air applications on shingle and barrel tile roofs.

### PRODUCT DATA:

#### Standard Features:

- 26 Gauge G90 Galvanized Steel
- Pittsburgh Seams
- 2.5" Flashing around base
- Optional Damper & Collar

#### Part numbers:

#006135: GRV-10T  
4 per Case  
#006137: GRV-10TD  
4 per Case  
#006138: GRV-10TC w/10" Collar  
4 per Case

Also Available in Aluminum, Copper, and Black, or Brown

**THE METAL SHOP**

APPROVED

CHECKED

DRAWN Colton Hunt 10/31/2019

SIZE

A

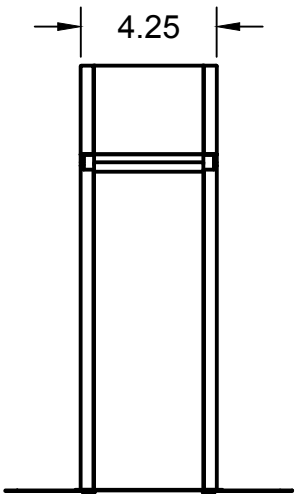
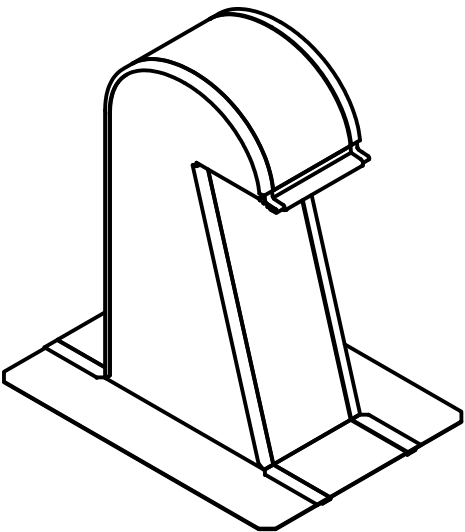
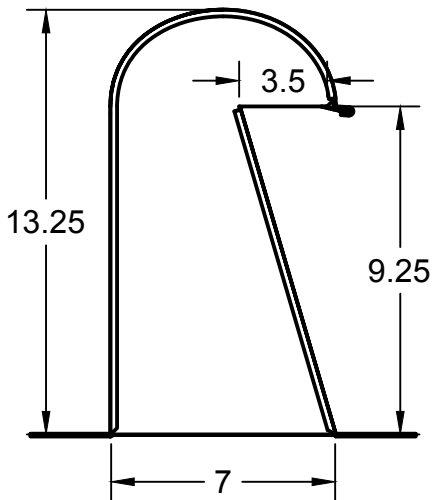
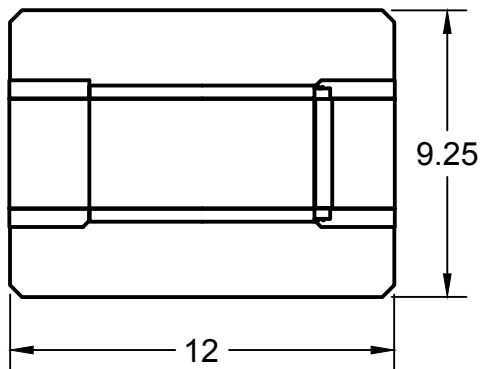
REV

SHEET

1/1

SCALE 1:7

Dimensions in inches



Size:  
**Extra Tall 4" Roof Vent**

PRODUCT  
DESCRIPTION:

Extra Tall 4" Roof Vent  
For residential exhaust air  
applications on shingle and  
barrel tile roofs.

PRODUCT DATA:

Standard Features:

- 26 Gauge G90 Galvanized Steel
- Pittsburgh Seams
- 2.5" Flashing around base
- Optional Damper & Collar

Part numbers:

- #006113: GRV-4XT  
10 per Case  
#006114: GRV-4XTD  
10 per Case  
#006116: GRV-4XTDC w/4" Collar  
10 per Case

Also Available in Aluminum,  
Copper, and Black, or Brown

**THE METAL SHOP**

APPROVED

CHECKED

DRAWN Colton Hunt 10/31/2019

SIZE

A

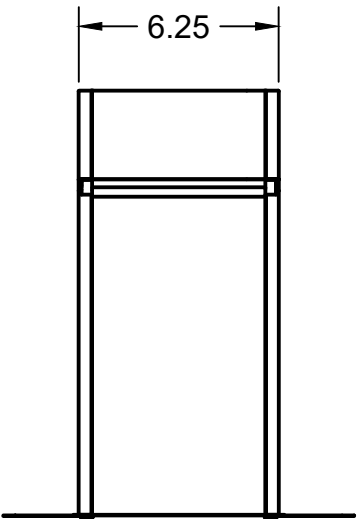
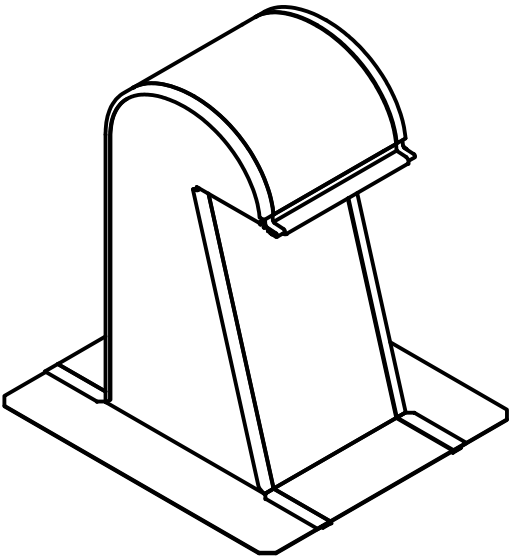
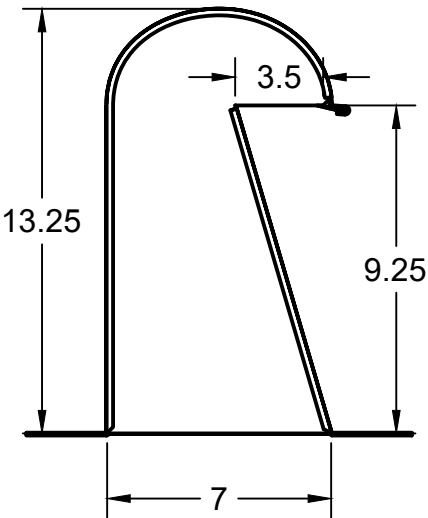
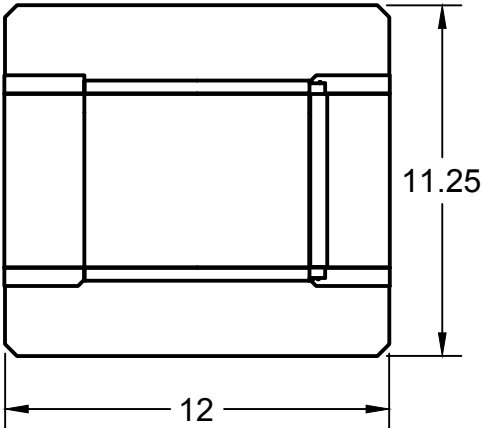
REV

SHEET

1/1

SCALE 1:6

Dimensions in inches



Size:  
**Extra Tall 6" Roof Vent**

**PRODUCT DESCRIPTION:**

Extra Tall 6" Roof Vent  
For residential exhaust air applications on shingle and barrel tile roofs.

**PRODUCT DATA:**

Standard Features:

- 26 Gauge G90 Galvanized Steel
- Pittsburgh Seams
- 2.5" Flashing around base
- Optional Damper & Collar

Part numbers:

#006999: GRV-6XT  
8 per Case  
#006999: GRV-6XTD  
8 per Case  
#006999: GRV-6XTDC  
6 per Case

Also Available in Aluminum,  
Copper, and Black, or Brown

**THE METAL SHOP**

APPROVED

CHECKED

DRAWN Colton Hunt 10/31/2019

SIZE

A

REV

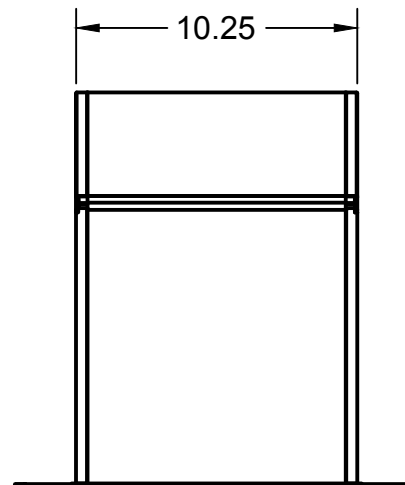
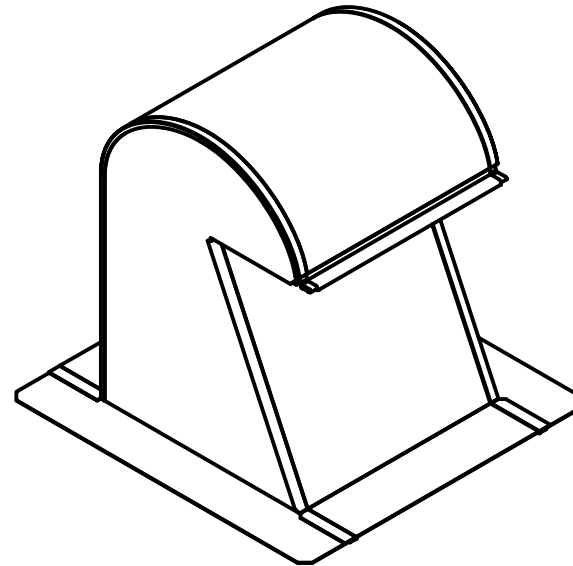
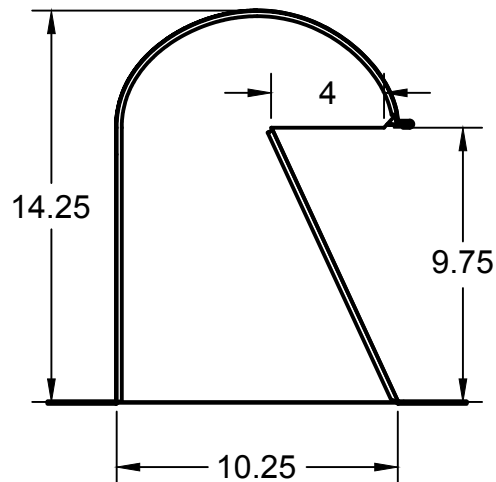
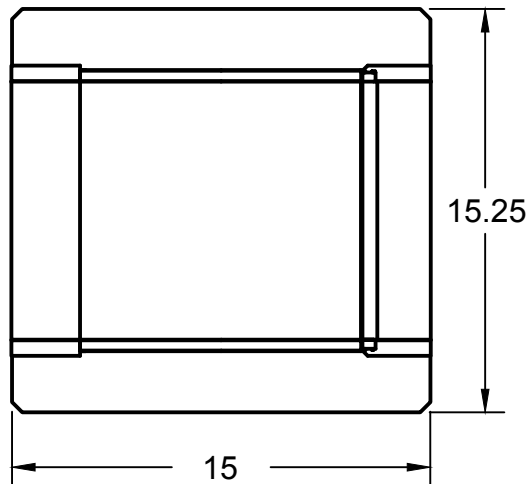
SHEET

1/1

SCALE 1:6



Dimensions in inches



## Size: Extra Tall 10" Roof Vent

### PRODUCT DESCRIPTION:

Extra Tall 10" Roof Vent  
For residential exhaust air  
applications on shingle and  
barrel tile roofs.

### PRODUCT DATA:

#### Standard Features:

- 26 Gauge G90 Galvanized Steel
- Pittsburgh Seams
- 2.5" Flashing around base
- Optional Damper & Collar

#### Part numbers:

#006139: GRV-10XT

4 per Case

#006139D: GRV-10XTD

4 per Case

Also Available in Aluminum,  
Copper, and Black, or Brown

# THE METAL SHOP

APPROVED

CHECKED

DRAWN Colton Hunt 10/31/2019

SIZE

A

REV

SHEET

1/1

SCALE 1:7