

AC Condenser Clip THE METAL SHOP

2541 W. Dunnellon Road

Dunnellon, FL 34433

www.metalshop.org

Phone: 888-441-2492 Fax: 352-522-0007

Notes

1. ALL CONSTRUCTION SHALL BE IN ACCORDANCE WITH THE 7th EDITION FLORIDA BUILDING CODE, 2020, BUILDING VOLUME AND ASCE 7 - 2016 MINIMUM DESIGN LOADS ON BUILDINGS AND OTHER STRUCTURES.
2. IF, IN THE CONTRACTORS OPINION, ANY WORK THAT IS INDICATED IN THE DRAWINGS, OR SPECIFIED IN SUCH A MANNER WILL MAKE IT IMPOSSIBLE TO PRODUCE A FIRST CLASS PIECE OF WORK, OR SHOULD DISCREPANCIES APPEAR IN DIMENSIONS OR DETAILS THEY SHALL BE SUBMITTED TO OWNER BEFORE PROCEEDING WITH WORK.
3. ANY CHANGE FROM THE DRAWINGS AND / OR FIELD CHANGE CONDITIONS, MUST BE IMMEDIATELY BROUGHT TO THE ATTENTION OF THE STRUCTURAL ENGINEER SO THAT NECESSARY CHANGES CAN BE MADE AND INTENT OF THE DESIGN IS CARRIED OUT TO ITS FULLEST EXTENT.
4. ALL ANCHOR/CONNECTION BOLTS SHALL BE IN ACCORDANCE WITH ASTM A-307 OR A-325 F.
5. MINIMUM DESIGN LOADS : DEAD LOADS AND LIVE LOADS IN ACCORDANCE WITH THE 2020 FLORIDA BUILDING CODES, CHAPTER 16.
6. SEE MANUFACTURE INSTALLATION FOR AC CONDENSER UNIT.
7. DESIGN AND ENGINEERING IS FOR THE METAL SHOP ANCHOR CLIP ONLY. SEE MANUFACTURE INSTRUCTIONS AND CERTIFICATIONS FOR PROPER INSTALLATION OF AC UNIT.

METAL SHOP # 771 - 4" ANCHOR CLIP
METAL SHOP # 773 - 6" ANCHOR CLIP
METAL SHOP # 883 - 8" ANCHOR CLIP

Anchor Clip Notes:

1. The anchor clip shall be 16 gauge, G-90 Hot Dipped galvanized steel, rated for coastal applications.
2. The anchor clips shall be installed with #14-3/4" self tapping sheet metal screws.
3. Anchor clip is intended for AC Condenser mounting installations only.
4. For ground installations, shall be installed on 2000 psi minimum strength concrete pad of concrete slabs ONLY. Other pads or installation configurations must be custom designed.
5. Minimum 4 clips required per ac condenser unit. Clip anchors shall be equally space around base of condenser unit. See detail on A-4 for number of #14-3/4" self tapping screws corresponding to clip size. Self tapping screws to have neoprene washers. Anchor clip shall be anchored to the concrete pad with 1/4" Tapcons 1 3/4" min. embedment.
6. Attach Tapcon anchor into concrete base per Tapcon installation instructions. Do not over tighten anchor.
7. All hardware must be fastened prior to connecting refrigerant lines and electrical power to the unit.
8. 196 MPH Ultimate wind speed rating is based on 3-second gust on a condenser unit 10.2 sq-ft surface area facing the wind. calculations are based on ASCE 7 and chapter 16 of 2020 FBC for exposure C, risk category II, unit weight 500 lbs.
9. 167 MPH Ultimate wind speed for 10.2 sf-ft of surface area facing the wind for exposure D, risk category III and IV for a unit weight of 500 lbs.



Digitally signed
by Joseph D.
Hiller P.E.#74583
Date: 2021.01.12
17:30:26 -05'00'

This plan has been digitally signed and sealed by Joseph D. Hiller, P.E., using a Digital signature. Printed copies of this document are not considered signed and sealed and the digital signature must be verified on any electronic copies.

REVISIONS

DATE

THIS DRAWING IS NOT VALID
UNLESS SIGNED, SEALED AND
DATED BY A REGISTERED
PROFESSIONAL



Joseph D. Hiller P.E.

Florida P.E. License # 74583

5827 Southport Drive
Port Orange, FL 32127
Phone: 386-248-1700
Fax: 386-265-4603

AC Condenser Anchor Clip

THE METAL SHOP

2541 W. Dunnellon Road
Dunnellon, FL 34433

www.metalshop.org
Phone: 888-441-2492 Fax: 352-522-0007

THIS DRAWING AND ITS
REPRODUCTIONS ARE THE
PROPERTY OF THE
ENGINEER AND MAY NOT BE
REPRODUCED, PUBLISHED, OR
USED IN ANYWAY WITHOUT
THE WRITTEN PERMISSION
OF THE ENGINEER

DATE: 1/11/2021

SCALE: AS NOTED

DRAWN BY: J. HILLER

JOB NO.

64887

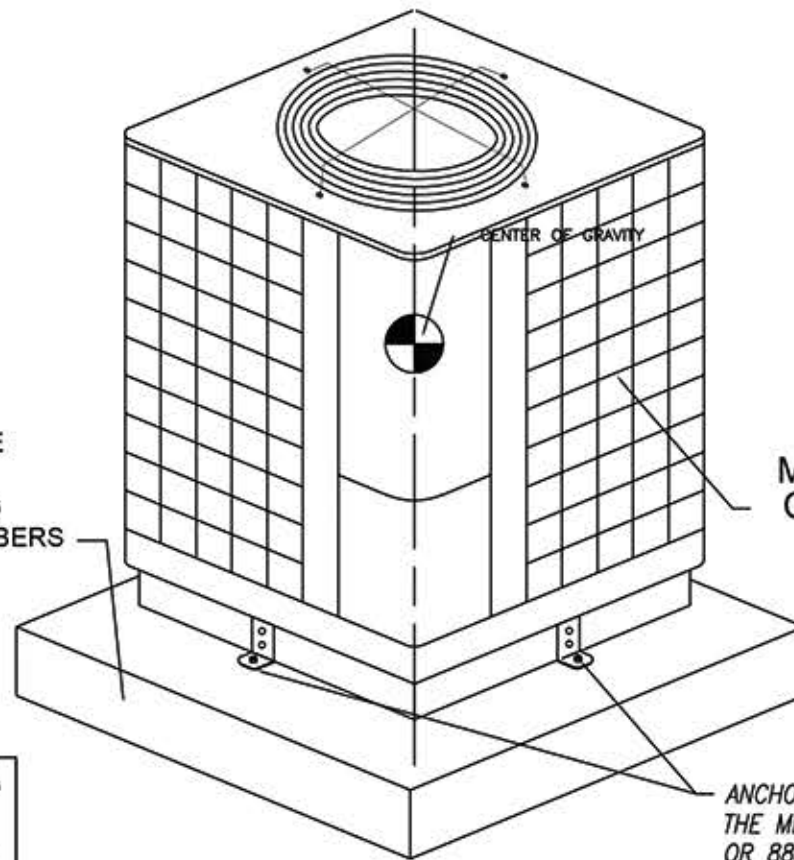
1

4

CENTER OF GRAVITY OF UNIT IS ASSUMED TO AT THE GEOMETRIC CENTER OF THE MECHANICAL UNIT. ANCHORING IS FOR REGULAR SHAPED UNITS I.E. SQUARE OR RECTANGULAR. NO IRREGULAR SHAPED UNITS

CONCRETE BASE OR HOST STRUCTURE TO BE DESIGNED BY OTHERS. CONCRETE MUST BE 2000 PSI MINIMUM. SEE ENGINEERING FOR ROOF TOP MOUNTING APPLICATIONS OR WOOD SUPPORT MEMBERS

THIS ANCHORING DETAIL WILL WITHSTAND A MAXIMUM DESIGN WINDSPEED OF: 165 MPH Exp C, Cat II STRUCTURES. MAX WINDSPEED OF: 143 MPH for EXP D, Cat II STRUCTURES. SITE SPECIFIC ENGINEERING REQUIRED FOR CATEGORY III AND IV BUILDINGS.



ANCHOR CLIPS: THE METAL SHOP CLIP MODEL 771, 773 OR 883 CLIP ANCHOR AND FASTENERS. ONE ANCHOR CLIP PER SIDE OF UNIT. (4) TOTAL (16 GA.) SEE DETAIL ON A-4 FOR CORRECT NUMBER OF #14-3/4" TO FASTEN TO BASE OF CONDENSER. ATTACH TO CONCRETE PAD/SLAB USING 1/4" x 1 3/4" TAPCON.

EXTERIOR EQUIPMENT TIE DOWN

SCALE: N.T.S.

STANDARD ANCHOR SCHEDULE

SUBSTRATE	ANCHOR
CONCRETE: (4" THICK MIN, 3192KSI MIN.)	(1)-1/4" x 1 3/4" ITW BULDEX OR ELCO TAPCON, 1 3/4" FULL EMBED TO CONCRETE, 2-1/2" MIN. EDGE DISTANCE, 3" MIN. SPACING TO ANY ADJACENT ANCHOR.

MAXIMUM ALLOWABLE LATERAL WIND PRESSURE (ANCHOR TO CONCRETE PAD)
ONE (1) CLIP AT EACH CORNER (TOTAL OF 4 CLIPS PER UNIT.)

MAXIMUM SURFACE AREA OF UNITS LARGEST FACE	UNIT HEIGHT	UNIT WIDTH	(1) CLIP AT EACH CORNER TOTAL OF 4 CLIPS 1/4" TAPCON TO CONCRETE BASE
6 FT ²	24" MAX	12" MIN	43 PSF
9 FT ²	32" MAX	15" MIN	32 PSF
4 FT ²			90 PSF
6 FT ²	48" MAX	24" MIN	60 PSF
9 FT ²			40 PSF
12 FT ²			30 PSF
16 FT ²			
20 FT ²			29 PSF
25 FT ²	60" MAX	48" MIN	
30 FT ²			
36 FT ²			

- TIE-DOWN CLIPS SHALL BE FASTENED TO MECHANICAL HOUSING UNIT WITH (2)-#14x3/4" STS GRADE 5 SHEET METAL SCREWS.
- MECHANICAL HOUSING UNIT SHALL CONFORM TO THE FOLLOWING:
 - ALUMINUM FRAME OR EXTERIOR HOUSING SHALL BE 6063-T6 MIN. ALUMINUM SHEET WITH F_{ty}=30 KSI, 0.0625" MIN. THICKNESS.
 - STEEL HOUSING UNITS SHALL BE 33KSI MIN. STEEL, GRADE 33, 22GA MIN. (t=0.0299").
- MAXIMUM ALLOWABLE WIND PRESSURES MAY BE EQUIVALENT DUE TO THE LIMITING CAPACITY OF THE 1" CLIP.
- A MAXIMUM ALLOWABLE VALUE OF 200 PSF HAS BEEN UTILIZED; FOR HIGHER DEMAND CAPACITIES CONTACT THIS ENGINEER FOR SITE-SPECIFIC ENGINEERING.

GENERAL NOTES:

- THIS PRODUCT HAS BEEN DESIGNED AND SHALL BE FABRICATED IN ACCORDANCE WITH THE REQUIREMENTS OF THE 2020 FLORIDA BUILDING CODE, 7th EDITION FOR USE WITH ASCE 7-16. THIS PRODUCT MAY BE USED WITHIN AND OUTSIDE THE HIGH VELOCITY HURRICANE ZONE.
- NO 1/3% INCREASE IN ALLOWABLE STRESS HAS BEEN USED IN THE DESIGN OF THIS ANCHOR SYSTEM.
- ALLOWABLE DESIGN SHOWN ON TABLES IS BASED ON ALLOWABLE SHEAR AND TENSION LOADS OF MECHANICAL FASTENERS.
- MAXIMUM & MINIMUM DIMENSIONS AND WEIGHT UNITS SHALL CONFORM TO SPECIFICATIONS STATED ON THESE ENGINEERING SHEETS
- ALL MECHANICAL SPECIFICATIONS, CLEAR SPACE, TONNAGE, ETC. SHALL BE AS PER THE MANUFACTURER RECOMMENDATIONS AND ARE THE EXPRESS RESPONSIBILITY OF THE CONTRACTOR.
- FASTENERS TO BE # 14x3/4" SELF TAPPING SHEET METAL SCREWS. UNLESS NOTED OTHERWISE.
- TAPCONS SHALL BE ITW BULDEX OR ELCO BRAND, AND SHALL BE 1/4"x1 3/4" INSTALLED TO 2000 PSI MINIMUM COMPRESSIVE STRENGTH. SEE ANCHOR SCHEDULE FOR ANCHOR REQUIREMENTS.
- ALL STEEL CLIPS SHALL BE ASTM A283 STEEL WITH F_y = 33 KSI. ALL STEEL MEMBERS SHALL BE PROTECTED AGAINST CORROSION WITH G90-RATED GALVANIZED COATING, SUITABLE FOR ALL COASTAL INSTALLATIONS.
- INSTALL AN ELECTRICAL GROUND, WHEN REQUIRED. ALL ELECTRICAL CONNECTIONS INCLUDING GROUNDS TO BE DESIGNED & INSTALLED BY OTHERS.
- THE ADEQUACY OF ANY EXISTING STRUCTURE TO WITHSTAND SUPERIMPOSED LOADS SHALL BE VERIFIED AND IS NOT INCLUDED IN THIS CERTIFICATION. EXCEPT AS EXPRESSLY PROVIDED HEREIN, NO ADDITIONAL CERTIFICATIONS OR AFFIRMATIONS ARE INTENDED.
- THE SYSTEM DETAILED HEREIN IS A GENERIC UNIT INSTALLATION. THIS INSTALLATION DOES NOT PROVIDE INFORMATION FOR A SITE SPECIFIC INSTALLATION. FOR SITE CONDITIONS DIFFERENT FROM THE CONDITIONS DETAILED HEREIN, A LICENSED ENGINEER OR REGISTERED ARCHITECT SHALL PREPARE SITE SPECIFIC DOCUMENTS FOR USE IN CONJUNCTION WITH THIS DOCUMENT.

RECOMMENDED FASTENERS

1/4" x 1 3/4" TAPCON

MAXIMUM ALLOWABLE SHEAR LOAD FOR 1/4" DIA CONCRETE FASTENERS IN 2000 PSI MINIMUM STRENGTH CONCRETE IS: 325 LBS. FULL OUT (TENSION LOAD) STRENGTH OF TAPCON IS 505 LBS WITH 1 3/4" MIN. EMBEDMENT:

SINGLE SHEAR: 325 LBS
TENSION: 505 LBS



Digitally signed by Joseph D. Hiller P.E.#74583
Date: 2021.01.12 17:30:46 -05'00'

This plan has been digitally signed and sealed by Joseph D. Hiller, P.E., using a Digital signature. Printed copies of this document are not considered signed and sealed and the digital signature must be verified on any electronic copies.

REVISIONS

DATE

THIS DRAWING IS NOT VALID UNLESS SIGNED, SEALED AND DATED BY A REGISTERED PROFESSIONAL



Joseph D. Hiller P.E.
Florida P.E. License # 74583
P.O. Box 290855
Port Orange, FL 32129
Phone: 386-248-1700
Email: hillereengineering@gmail.com

PROJECT: AC Condenser Anchor Clip
THE METAL SHOP
2541 W. Dunnellon Road
Dunnellon, FL 34433
www.metalshop.org
Phone: 888-441-2492 Fax: 352-522-0007

THIS DRAWING AND ITS REPRODUCTIONS ARE THE PROPERTY OF THE ENGINEER AND MAY NOT BE REPRODUCED, PUBLISHED, OR USED IN ANY MANNER WITHOUT THE WRITTEN PERMISSION OF THE ENGINEER

DATE: 1/11/2021
SCALE: AS NOTED
DRAWN BY: J. HILLER

JOB NO.
SHEET

A-2
2 of 4

GENERAL NOTES:

1. THIS PRODUCT HAS BEEN DESIGNED AND SHALL BE FABRICATED IN ACCORDANCE WITH THE REQUIREMENTS OF THE 2020 FLORIDA BUILDING CODE, 7th EDITION FOR USE WITH ASCE 7-16. THIS PRODUCT MAY BE USED WITHIN AND OUTSIDE THE HIGH VELOCITY HURRICANE ZONE.

2. NO 1/3 % INCREASE IN ALLOWABLE STRESS HAS BEEN USED IN THE DESIGN OF THIS ANCHOR SYSTEM.

3. ALLOWABLE DESIGN SHOWN ON TABLES IS BASED ON ALLOWABLE SHEAR AND TENSION LOADS OF MECHANICAL FASTENERS.

4. MAXIMUM & MINIMUM DIMENSIONS AND WEIGHT UNITS SHALL CONFORM TO SPECIFICATIONS STATED ON THESE ENGINEERING SHEETS

5. ALL MECHANICAL SPECIFICATIONS, CLEAR SPACE, TONNAGE, ETC. SHALL BE AS PER THE MANUFACTURER RECOMMENDATIONS AND ARE THE EXPRESS RESPONSIBILITY OF THE CONTRACTOR.

6. FASTENERS TO BE # 14x3/4" SELF TAPPING SHEET METAL SCREWS. UNLESS NOTED OTHERWISE.

7. TAPCONS SHALL BE ITW BULDEX OR ELCO BRAND, AND SHALL BE 1/4" WITH 1 3/4" MIN. EMBEDMENT. INSTALLED TO 2000 PSI MINIMUM COMPRESSIVE STRENGTH. SEE ANCHOR SCHEDULE FOR ANCHOR REQUIREMENTS.

8. ALL STEEL CLIPS SHALL BE ASTM A283 STEEL WITH $F_y = 33$ KSI. ALL STEEL MEMBERS SHALL BE PROTECTED AGAINST CORROSION WITH G90-RATED GALVANIZED COATING, SUITABLE FOR ALL COASTAL INSTALLATIONS.

9. INSTALL AN ELECTRICAL GROUND, WHEN REQUIRED. ALL ELECTRICAL CONNECTIONS INCLUDING GROUNDS TO BE DESIGNED & INSTALLED BY OTHERS.

10. THE ADEQUACY OF ANY EXISTING STRUCTURE TO WITHSTAND SUPERIMPOSED LOADS SHALL BE VERIFIED AND IS NOT INCLUDED IN THIS CERTIFICATION. EXCEPT AS EXPRESSLY PROVIDED HEREIN, NO ADDITIONAL CERTIFICATIONS OR AFFIRMATIONS ARE INTENDED.

11. THE SYSTEM DETAILED HEREIN IS A GENERIC UNIT INSTALLATION. THIS INSTALLATION DOES NOT PROVIDE INFORMATION FOR A SITE SPECIFIC INSTALLATION. FOR SITE CONDITIONS DIFFERENT FROM THE CONDITIONS DETAILED HEREIN, A LICENSED ENGINEER OR REGISTERED ARCHITECT SHALL PREPARE SITE SPECIFIC DOCUMENTS FOR USE IN CONJUNCTION WITH THIS DOCUMENT.

RECOMMENDED FASTENERS

1/4" x 1 3/4" TAPCON

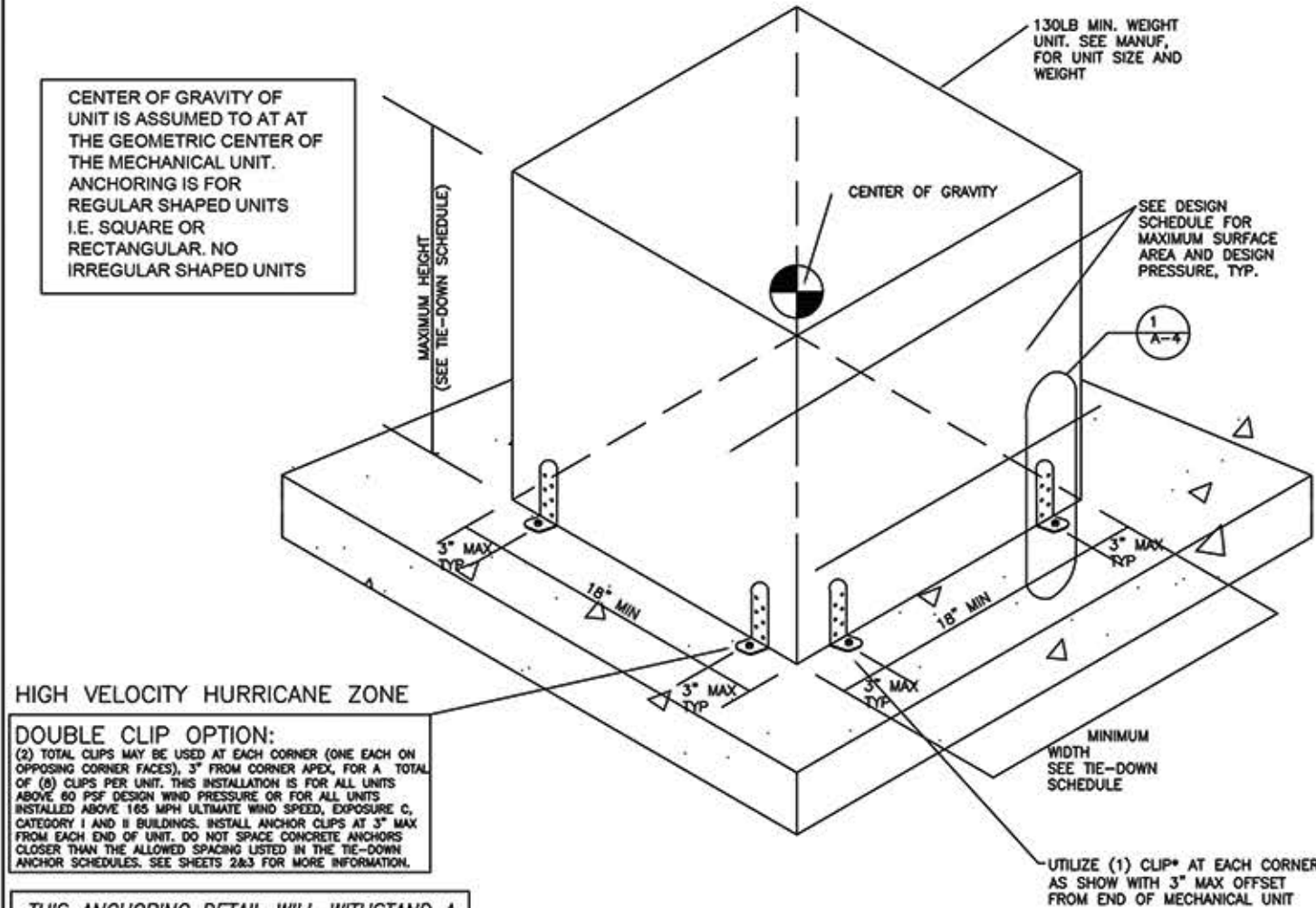
MAXIMUM ALLOWABLE SHEAR LOAD FOR 1/4" DIA CONCRETE FASTENERS IN 2000 PSI MINIMUM STRENGTH CONCRETE IS: 325 LBS. FULL OUT (TENSION LOAD) STRENGTH OF TAPCON IS 505 LBS WITH 1 3/4" MIN. EMBEDMENT:

SINGLE SHEAR: 325 LBS
TENSION: 505 LBS



Digitally signed
by Joseph D.
Hiller P.E.#74583
Date: 2021.01.12
17:31:02 -05'00'

This plan has been digitally signed and sealed by Joseph D. Hiller, P.E., using a Digital signature. Printed copies of this document are not considered signed and sealed and the digital signature must be verified on any electronic copies.



HIGH VELOCITY HURRICANE ZONE

DOUBLE CLIP OPTION:

(2) TOTAL CLIPS MAY BE USED AT EACH CORNER (ONE EACH ON OPPOSING CORNER FACES), 3" FROM CORNER APEX, FOR A TOTAL OF (8) CLIPS PER UNIT. THIS INSTALLATION IS FOR ALL UNITS ABOVE 60 PSF DESIGN WIND PRESSURE OR FOR ALL UNITS INSTALLED ABOVE 165 MPH ULTIMATE WIND SPEED, EXPOSURE C, CATEGORY I AND II BUILDINGS. INSTALL ANCHOR CLIPS AT 3" MAX FROM EACH END OF UNIT. DO NOT SPACE CONCRETE ANCHORS CLOSER THAN THE ALLOWED SPACING LISTED IN THE TIE-DOWN ANCHOR SCHEDULES. SEE SHEETS 2&3 FOR MORE INFORMATION.

THIS ANCHORING DETAIL WILL WITHSTAND A MAXIMUM DESIGN WINDSPEED OF: 192 MPH Exp C, Cat II STRUCTURES. Max WINDSPEED OF: 167 MPH for EXP D, Cat II STRUCTURES. SITE SPECIFIC ENGINEERING REQUIRED FOR CATEGORY III AND IV BUILDINGS

EXTERIOR EQUIPMENT TIE DOWN

SCALE: N.T.S.

STANDARD ANCHOR SCHEDULE

SUBSTRATE	ANCHOR
CONCRETE: (4" THICK MIN, 3192KSI MIN.)	(1)-1/4" x 1 3/4" ITW BULDEX OR ELCO TAPCON, 1 3/4" FULL EMBED TO CONCRETE, 2-1/2" MIN. EDGE DISTANCE, 3" MIN. SPACING TO ANY ADJACENT ANCHOR.

MAXIMUM SURFACE AREA OF UNITS LARGEST FACE	UNIT HEIGHT	UNIT WIDTH	(2) CLIPS AT EACH SIDE
			TOTAL OF 8 CLIPS 1/4" TAPCON TO CONCRETE BASE
6 FT2	24" MAX	12" MIN	81 PSF
9 FT2	32" MAX	15" MIN	60 PSF
4 FT2	48" MAX	24" MIN	170 PSF
6 FT2			113 PSF
9 FT2			75 PSF
12 FT2			56 PSF
16 FT2	60" MAX	48" MIN	42 PSF
20 FT2			52 PSF
25 FT2			44 PSF
30 FT2			37 PSF
36 FT2			30 PSF

- TIE-DOWN CLIPS SHALL BE FASTENED TO MECHANICAL HOUSING UNIT WITH (2)-#14x3/4" STS GRADE 5 SHEET METAL SCREWS.
- MECHANICAL HOUSING UNIT SHALL CONFORM TO THE FOLLOWING:
 - ALUMINUM FRAME OR EXTERIOR HOUSING SHALL BE 6063-T6 MIN. ALUMINUM SHEET WITH $F_y=30$ KSI, 0.0625" MIN. THICKNESS.
 - STEEL HOUSING UNITS SHALL BE 33KSI MIN. STEEL, GRADE 33, 22 GAGE MIN. ($t=0.030$ ").
- MAXIMUM ALLOWABLE WIND PRESSURES MAY BE EQUIVALENT DUE TO THE LIMITING CAPACITY OF THE 1" CLIP.
- A MAXIMUM ALLOWABLE VALUE OF 200 PSF HAS BEEN UTILIZED; FOR HIGHER DEMAND CAPACITIES CONTACT THIS ENGINEER FOR SITE-SPECIFIC ENGINEERING.

REVISIONS

DATE:

THIS DRAWING IS NOT VALID UNLESS SIGNED, SEALED AND DATED BY A REGISTERED PROFESSIONAL



Joseph D. Hiller P.E.
Florida P.E. License # 74583
P.O. Box 290855
Port Orange, FL 32129
Phone: 386-248-1700
Email: hillereengineering@gmail.com

PROJECT: AC Condensor Anchor Clip
THE METAL SHOP
2541 W. Dunnellon Road
Dunnellon, FL 34433
www.metalshop.org
Phone: 888-441-2492 Fax: 352-522-0007

THIS DRAWING AND ITS REPRODUCTIONS ARE THE PROPERTY OF THE ENGINEER AND MAY NOT BE REPRODUCED, PUBLISHED, OR USED IN ANY MANNER WITHOUT THE WRITTEN PERMISSION OF THE ENGINEER

DATE: 1/11/2021

SCALE: AS NOTED

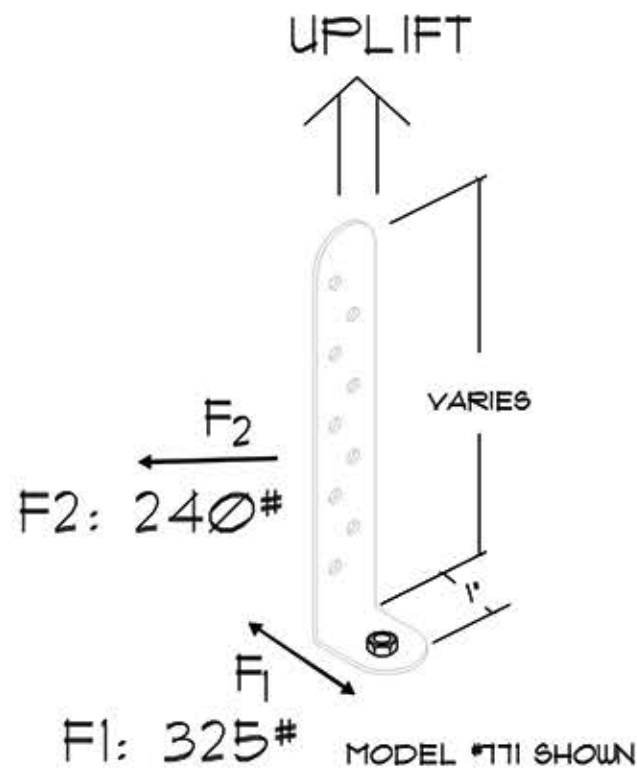
DRAWN BY: J. HILLER

JOB NO.

64887

A-3

3 4



USE MIN. OF 2- #14x3/4" SCREWS FOR 4" CLIP TO CONDENSER
 USE MIN. OF 2- #14x3/4" SCREWS FOR 6" CLIP TO CONDENSER
 USE MIN. OF 3- #14x3/4" SCREWS FOR 8" CLIP TO CONDENSER
 USE 1/4" x 1 3/4" TAPCON TO CONCRETE PAD

METAL SHOP # 771 - 4" ANCHOR CLIP
 METAL SHOP # 773 - 6" ANCHOR CLIP
 METAL SHOP # 883 - 8" ANCHOR CLIP

MAX UPLIFT: 505#
 WITH 2- #14x3/4" SCREWS PER CLIP

A/C ANCHOR CLIP

SHEET
METAL
SCREWS



METAL FASTENERS



RECOMMENDED FASTENERS
 1/4" x 1 3/4" TAPCON

MAXIMUM ALLOWABLE SHEAR LOAD
 FOR 1/4" DIA CONCRETE FASTENERS
 IN 2000 PSI MINIMUM STRENGTH
 CONCRETE IS: 325 LBS. PULL OUT
 (TENSION LOAD) STRENGTH OF TAPCON IS
 505 LBS WITH
 1 3/4" MIN. EMBEDMENT:

SINGLE SHEAR: 325 LBS
 TENSION: 505 LBS

LOAD CAPACITIES FOR TAPCONS

	Anchor Size	Emd. Depth	2,000 psi Concrete	4,000 psi Concrete	6,000 psi Concrete	Concrete Block	Red Brick
Tension Load (lbs.)	1/4"	1"	760	930	1,140	720	940
		1-1/4"	1,090	1,540	1,690	880	1,160
		1-1/2"	1,520	1,850	2,210	1,090	1,320
		1-3/4"	2,020	2,330	2,740	1,290	1,420
Shear Load (lbs.)	1/4"	1"	725	1,420	2,140	690	1,720
		1-1/4"	1,053	2,150	2,390	925	1,840
		1-1/2"	1,270	2,270	2,580	1,125	1,930
		1-3/4"	1,305	2,390	2,840	1,305	2,130

NOTE:
 The values listed above are ultimate load capacities for TAPCONS which should be reduced by minimum safety factor of 4 or greater to determine the allowable working load. Refer to the section on product selection guidelines for details. The consistency of hollow block and brick varies greatly. The load capacities listed above for hollow block and brick should be used as guidelines only. Job site tests should be conducted to determine the actual load capacities in these materials.

Notes:

1. Alternative fasteners may be used as shown in the details. All fasteners must meet or exceed the safe working load values specified by the manufacturer, and shall be approved by the building official.



Digitally signed
 by Joseph D.
 Hiller P.E.#74583
 Date: 2021.01.12
 17:31:17 -05'00'

This plan has been digitally signed and sealed by Joseph D. Hiller, P.E., using a Digital signature. Printed copies of this document are not considered signed and sealed and the digital signature must be verified on any electronic copies.

REVISIONS

DATE

THIS DRAWING IS NOT VALID
 UNLESS SIGNED, SEALED AND
 DATED BY A REGISTERED
 PROFESSIONAL



Joseph D. Hiller P.E.
 Florida P.E. License # 74583
 P.O. Box 290855
 Port Orange, FL 32129
 Phone: 386-248-1700
 Email: hillereengineering@gmail.com

PROJECT AC Condenser Anchor Clip
THE METAL SHOP
 2541 W. Dunnellon Road
 Dunnellon, FL 34433
 www.metalshop.org
 Phone: 888-441-2492 Fax: 352-522-0007

THIS DRAWING AND ITS
 REPRODUCTIONS ARE THE
 PROPERTY OF THE
 ENGINEER AND MAY NOT BE
 REPRODUCED, PUBLISHED, OR
 USED IN ANY MANNER WITHOUT
 THE WRITTEN PERMISSION
 OF THE ENGINEER

DATE: 1/11/2021
 SCALE: AS NOTED
 DRAWN BY: J. HILLER

JOB NO.
 SHEET

A-4

4 of 4