

# COASTAL & INLAND HURRICANE HVAC UNIT BRACKET MASTER PLAN

VALID AS A GENERIC SEALED MASTER PLAN ONLY FOR UP TO (2) INSTALLATIONS AT (1) LOCATION. SITE SPECIFIC/ADDITIONAL ENGINEERING REQUIRED THEREAFTER.

COPIES NOT VALID FOR PERMIT

COPIES NOT VALID FOR PERMIT

PE SEAL REQUIRED  
04/01/2021

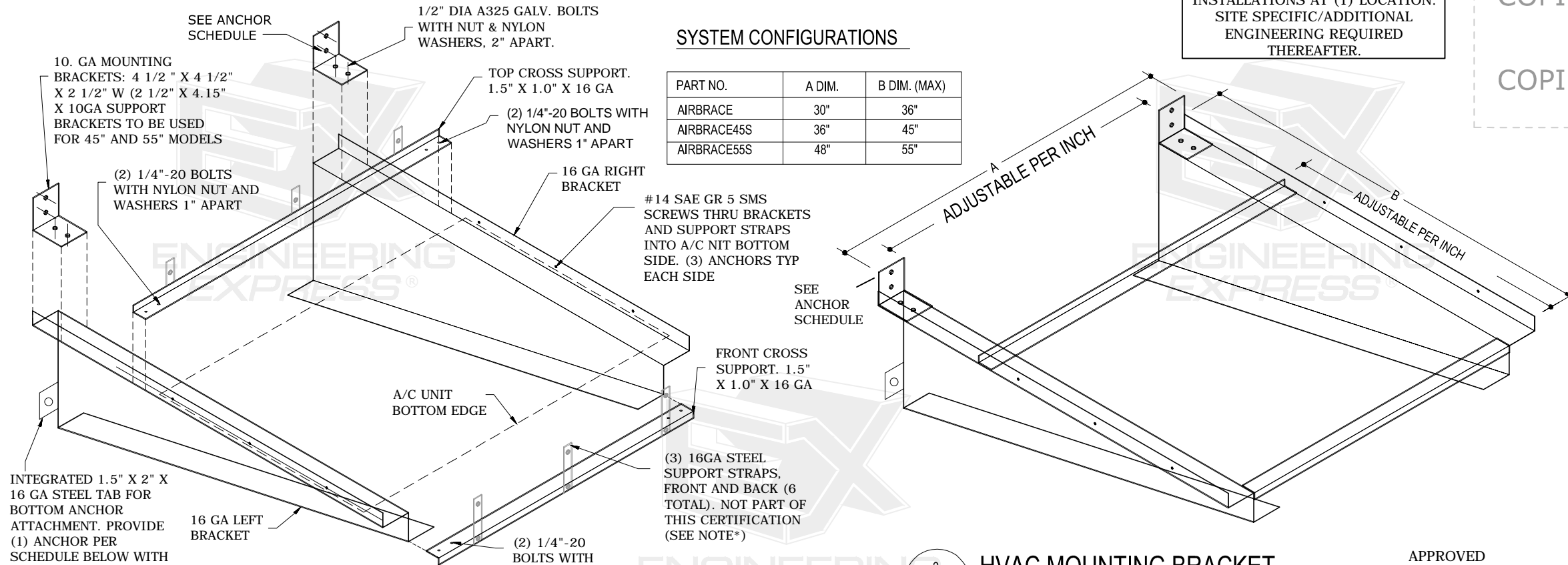
CERTIFYING ENGINEER AND CERT OF AUTH AS LISTED ON STAMP  
VALID FOR 1 PERMIT ONLY U.N.O.

**DIGITAL SEAL NOTICE:**  
IF THIS DOCUMENT IS DIGITALLY SIGNED, THIS SHEET IS PART OF A DIGITALLY SIGNED FILE. IT SHALL REMAIN IN DIGITAL FORMAT, SHALL BE VERIFIED BY ELECTRONIC MEANS, & PRINTED COPIES OF THIS DOCUMENT ARE NOT CONSIDERED SIGNED AND SEALED.

**PRINTED DOCUMENT NOTICE:**  
IF THIS DOCUMENT IS PRINTED & DOES NOT CONTAIN AN ENGINEER'S ORIGINAL SIGNATURE & SEAL, THIS DOCUMENT IS VOID & NOT VALID FOR USE. PHOTOCOPIES ARE NOT PERMITTED FOR USE.

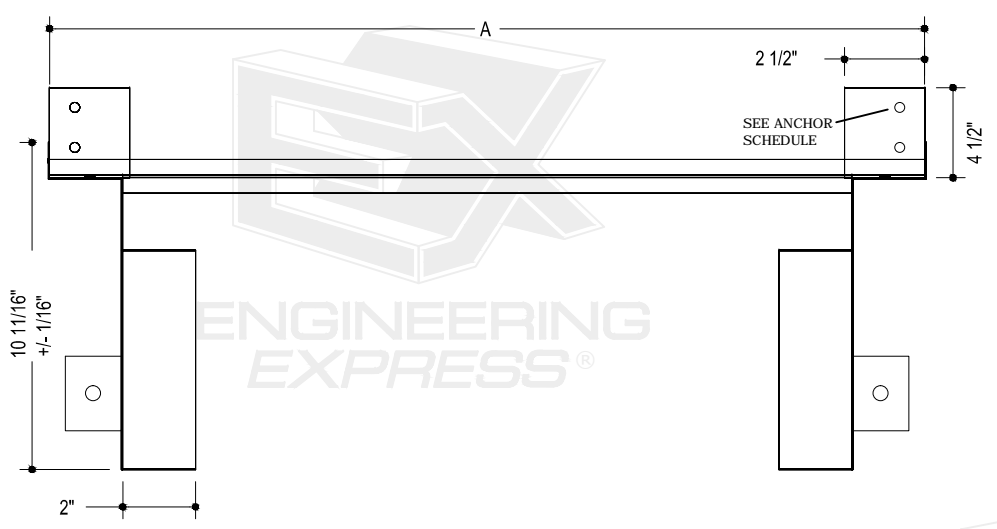
## SYSTEM CONFIGURATIONS

PART NO.	A DIM.	B DIM. (MAX)
AIRBRACE	30"	36"
AIRBRACE45S	36"	45"
AIRBRACE55S	48"	55"

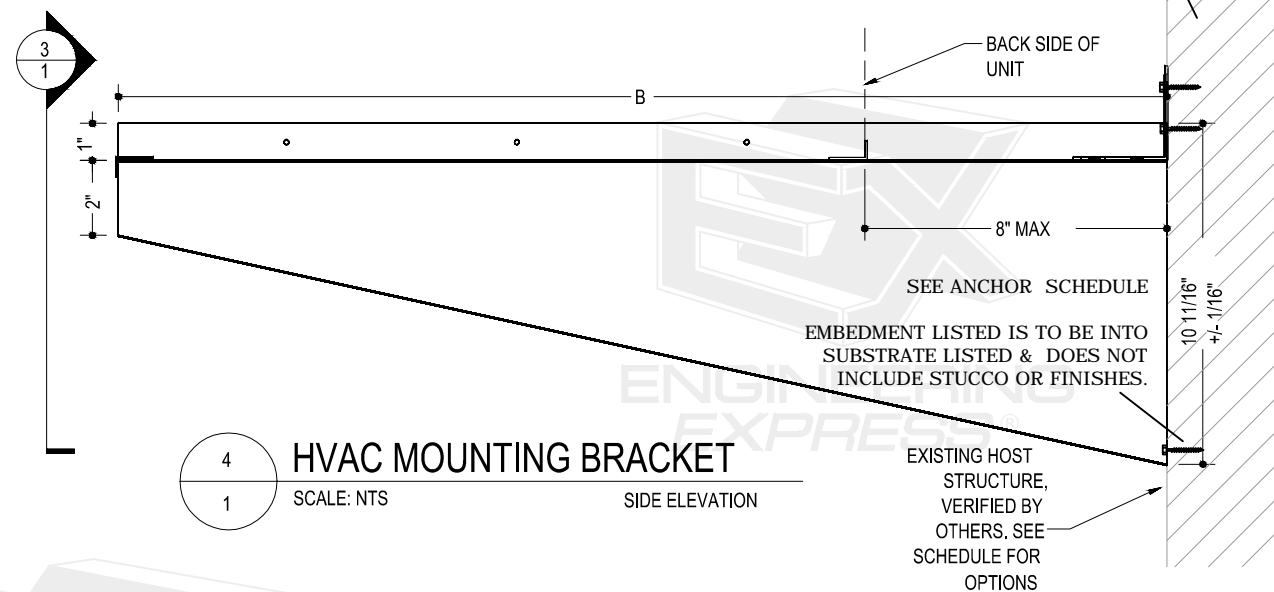


2 HVAC MOUNTING BRACKET  
SCALE: NTS ISOMETRIC VIEW

1 HVAC MOUNTING BRACKET  
SCALE: NTS EXPLODED VIEW



3 HVAC MOUNTING BRACKET  
SCALE: NTS FRONT ELEVATION



4 HVAC MOUNTING BRACKET  
SCALE: NTS SIDE ELEVATION

NOTE\*: THIS MOUNTING BRACKET IS CERTIFIED FOR BOTH LATERAL AND UPLIFT WIND PRESSURES PER THE CRITERIA IN THE DESIGN SCHEDULE HEREIN. THIS BRACKET IS CERTIFIED ONLY FOR ATTACHMENTS TO THE SIDE OF BUILDINGS, NOT FOR ROOFTOP CONDITIONS OR INSTALLATIONS. THIS PRODUCT IS NOT APPROVED FOR MISSILE IMPACT UNDER ANY CIRCUMSTANCE.

ANCHOR SCHEDULE (PER BRACKET)						
MAX WIND PRESSURE (UPLIFT)	MAX UNIT DIMENSIONS (LENGTH x WIDTH x HEIGHT, IN)	MAX UNIT WEIGHT (LBS)	3 KSI MIN CONCRETE	1.5 KSI MIN GROUT FILLED CONCRETE BLOCK	1/8" THICK MIN. STEEL	WOOD (G=0.55 MIN)
± 90 PSF	48 x 48 x 30	425	(1) 1/2" DIA. DEWALT SCREW BOLT WITH 3-1/2" EMBED. AND 8" MIN EDGE DIST.	(1) 1/2" DIA. DEWALT SCREW BOLT WITH 4" EMBED. AND 12" MIN EDGE DIST.	(2) 1/2" SAE GRADE 5 UNC BOLTS WITH 1-1/2" MIN. SPACING AND 3/4" MIN FROM ANY STEEL EDGE. PROVIDE 5 PITCHES MIN PAST THREAD PLANE	(2) 1/2" DIA. LAG SCREWS WITH 2-1/2" MIN THREAD PENETRATION, 1-1/2" MIN. SPACING AND 3/4" MIN EDGE DIST.

**DESIGN NOTES**  
MAXIMUM ALLOWABLE WIND SPEED, ELEVATION, AND EXPOSURE CATEGORY TO BE DETERMINED PER ASCE 7-16 "ABOVE GRADE SOLID SIGN" WIND PRESSURE METHODOLOGY. MAX ALLOWABLE ASD DESIGN PRESSURE PER SCHEDULE

**GENERAL NOTES**  
THIS SYSTEM HAS BEEN DESIGNED AND SHALL BE FABRICATED IN ACCORDANCE WITH THE REQUIREMENTS OF THE FLORIDA BUILDING CODE 7TH EDITION (2020), ALSO APPLICABLE FOR THE FBC 6TH EDITION (2017), IBC/IRC (2015 & 2018), AS WELL AS CURRENT VERSIONS OF THE MN, NC, NJ, NY, OH, SC, & VA BUILDING CODES AS APPLICABLE. CODE ENFORCED COMPLIES WITH STATE OF SEAL AND IF MULTIPLE VERSIONS ARE LISTED THEN MOST STRINGENT APPLIES. DESIGN SHALL UTILIZE ASD DESIGN METHOD USING ASCE 7-16 OR ASCE 7-10 CODES FOR SITE SPECIFIC APPLICATIONS AS APPLICABLE.

MAXIMUM DIMENSIONS AND WEIGHT OF UNIT SHALL CONFORM TO SPECIFICATIONS STATED HEREIN.

ALL MECHANICAL SPECIFICATIONS (CLEAR SPACE, TONNAGE, ETC.) SHALL BE AS PER MANUFACTURER RECOMMENDATIONS AND ARE THE EXPRESS RESPONSIBILITY OF THE CONTRACTOR. THIS DOCUMENT CERTIFIES ANCHORAGE CRITERIA FOR IDENTICAL SIZE AND WEIGHT UNIT REPLACEMENTS ONLY AND REQUIRES THAT THE CURB AND EXISTING STRUCTURE BE APPROVED BY OTHERS BEFORE USE. REFERENCE MANUFACTURERS COMPONENT DRAWINGS FOR DETAILED COMPONENT SPECIFICATIONS.

ALL FASTENERS TO BE #12 X 3/4" OR GREATER 2024-T4, 18-8 SERIES 300 NON-MAGNETIC STAINLESS STEEL, OR CADMIUM PLATED OR OTHERWISE CORROSION RESISTANT MATERIAL AND SHALL COMPLY ANY APPLICABLE FEDERAL, STATE, AND LOCAL CODES.

BOLTS SHALL CONFORM TO A.S.T.M. A325, ANCHOR BOLTS SHALL CONFORM TO TO A.S.T.M. A307. ALL BOLTS SHALL BE HOT DIPPED GALVANIZED, OR STAINLESS STEEL & MEET THE REQUIREMENTS OF ASTM A325.

ALL MEMBERS SHALL BE ASTM A36 FOR SHAPES OR A653 FOR SHEET STEEL (GRADE 33 MIN) WITH Fy = 36 KSI OR BETTER. THE CONTRACTOR IS RESPONSIBLE TO INSULATE ALL MEMBERS FROM DISSIMILAR MATERIALS TO PREVENT ELECTROLYSIS.

FOR STEEL MEMBERS ALL ANCHORS SHALL BE SPACED WITH 3xDIAMETER MIN. SPACING TO ADJACENT ANCHORS AND 1.5xDIAMETER MIN. END DISTANCE.

ELECTRICAL GROUND, WHEN REQUIRED, TO BE DESIGNED & INSTALLED BY OTHERS.

ENGINEER SEAL AFFIXED HERETO VALIDATES STRUCTURAL DESIGN AS SHOWN ONLY. USE OF THIS SPECIFICATION BY CONTRACTOR, et. al. INDEMNIFIES & SAVES HARMLESS THIS ENGINEER FOR ALL COST & DAMAGES INCLUDING LEGAL FEES & APPELLATE FEES RESULTING FROM MATERIAL FABRICATION, SYSTEM RESULTING FROM MATERIAL FABRICATION, SYSTEM ERECTION, CONSTRUCTION PRACTICES BEYOND THAT WHICH IS CALLED FOR BY LOCAL, STATE, & FEDERAL CODES & FROM DEVIATIONS OF THIS PLAN.

IT IS ASSUMED THAT THE ROLE OF THIS ENGINEER FOR THIS PROJECT IS THAT OF SPECIALTY ENGINEER AND NOT THE ENGINEER OF RECORD. CONSEQUENTLY, THE ARCHITECT/ENGINEER OF RECORD SHALL BE RESPONSIBLE FOR THE INTEGRITY OF ALL SUPPORTING SURFACES TO THIS DESIGN WHICH SHALL BE COORDINATED BY THE PERMITTING CONTRACTOR.

THIS DOCUMENT IS GENERIC AND DOES NOT PERTAIN TO ANY SPECIFIC PROJECT SITE. INFORMATION CONTAINED HEREIN IS BASED ON CONTRACTOR-SUPPLIED DATA AND MEASUREMENTS. ENGINEERING EXPRESS SHALL NOT BE HELD RESPONSIBLE OR LIABLE IN ANY WAY FOR ERRONEOUS OR INACCURATE DATA OR MEASUREMENTS. DIMENSIONS ARE SHOWN TO ILLUSTRATE DESIGN FORCES AND OTHER DESIGN CRITERIA. THEY MAY VARY SLIGHTLY, BUT MUST REMAIN WITHIN THE LIMITATIONS SPECIFIED HEREIN. WORK SHALL BE FIELD VERIFIED BY OTHERS PRIOR TO CONSTRUCTION. ENGINEERING EXPRESS SHALL BE NOTIFIED AND GIVEN AN OPPORTUNITY TO REEVALUATE OUR WORK UPON DISCOVERY OF ANY INACCURATE INFORMATION PRIOR TO MODIFICATION OF EXISTING FIELD CONDITIONS AND FABRICATION AND INSTALLATION OF MATERIALS. ALTERATIONS OR ADDITIONS TO THIS DOCUMENT ARE NOT PERMITTED AND INVALIDATE OUR CERTIFICATION.

EXCEPT AS EXPRESSLY PROVIDED HEREIN, NO ADDITIONAL CERTIFICATIONS OR AFFIRMATIONS ARE INTENDED.

**VISIT [ECALC.IO/39270](http://ECALC.IO/39270)**  
FOR ENGINEER CERTIFIED ORIGINALS & MORE INFORMATION ABOUT THIS DOCUMENT OR SCAN THIS QR CODE

**VISIT [ENGINEERINGEXPRESS.COM/STORE](http://ENGINEERINGEXPRESS.COM/STORE)**  
FOR ADDITIONAL PLANS, REPORTS & RESOURCES

**ENGINEERING EXPRESS**  
CORPORATE OFFICE:  
160 SW 12th AVE, SUITE 106  
DEERFIELD BEACH, FL 33442  
(954) 354-0660 | (866) 396-9999  
TEAM@ENGINEERINGEXPRESS.COM  
ENGINEERINGEXPRESS.COM

**DUCTMATE INDUSTRIES**  
210 FIFTH STREET  
CHARLEROI, PA 15022  
1-800-245-3188

**COASTAL AND INLAND HURRICANE HVAC UNIT BRACKETS**  
FBC 7TH ED (2020) & IBC (2018)

REMARKS	DATE	DRWN	CHKD
INIT ISSUE	6/16/20	JC	RWN
2020-FBC	3/23/21	CCB	RWN

THIS DOCUMENT IS THE PROPERTY OF ENGINEERING EXPRESS AND SHALL NOT BE REPRODUCED IN WHOLE OR PART WITHOUT WRITTEN CONSENT OF ENGINEERING EXPRESS. ALTERATIONS, ADDITIONS, OR OTHER MARKINGS TO THIS DOCUMENT ARE NOT PERMITTED AND INVALIDATE OUR CERTIFICATION.

21-39720  
SCALE: NTS UNLESS NOTED  
1 OF 1

C:\Users\colby\Engineering\Express\Production - Documents\Projects\21-37920 2020 MPS Update - Ductmate\Work\Drawings & CAD\21-37920 - Ductmate.dwg  
04/01/2021 - 8:59am colby