



MILLER HATCHER

COMMERCIAL REAL ESTATE

515 THOMPSON STREET - EDEN, NC

FOR SALE



PROPERTY OVERVIEW

Type	Office
Acres ±	2.43 +/-
S/F	12,271 +/-
Price	\$595,000

- A block away from UNC Hospital, Meadow Greens and Kingsway Shopping Centers

- Approximately 40 mins North of Greensboro

- Tax Value of \$1,169,909

- Building formerly housed four medical practices
- Front and rear entrances
- The public lobby is a sunroom
- The building can be reached using Thompson Street and Kennedy Street
- A circle drive to the front door is perfect for quick deliveries
- Heating and cooling are by forced air. Individual gas packs are dedicated to each office and the lobby



No warranty or representation is made for the accuracy or assumptions of the information contained herein. All information is subject to omissions, errors, price changes, prior sale, and/or withdrawal without notice. No liability is assumed for any inaccuracy of the information contained herein.



PHIL PRICE
 Mobile: 336.558.7015
 Direct: 336.283.0643
phil@millerhatcher.com

515 Thompson Street

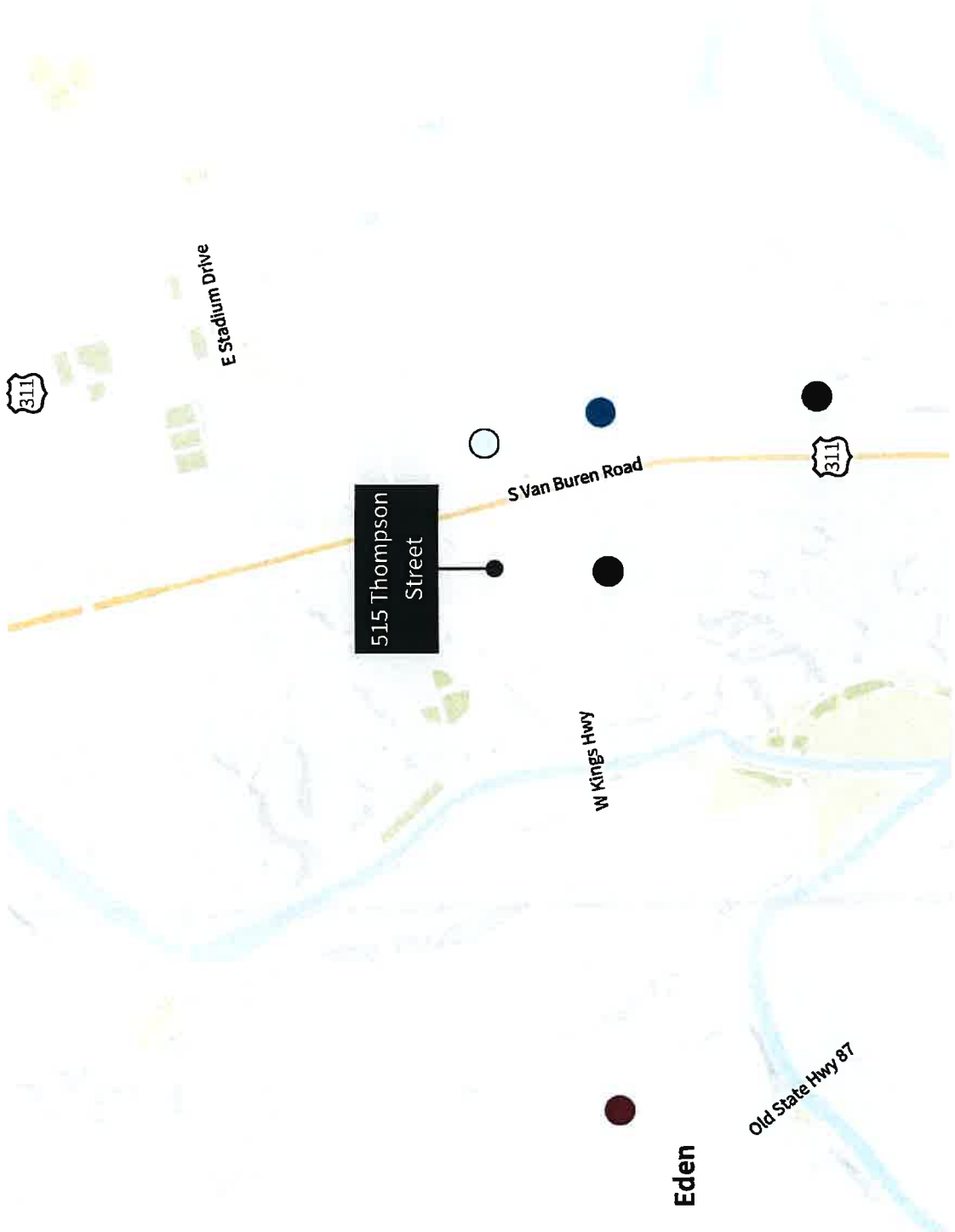
One block from lighted intersection with Kings Hwy and S. Kennedy Street.

Legend

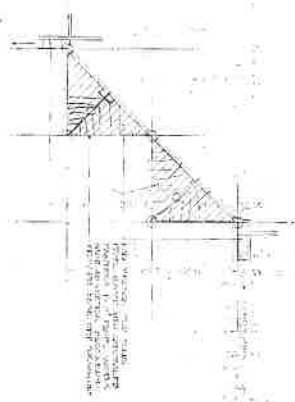
- English Village
- Feature 1
- Feature 2
- Feature 3
- Medical Arts Building
- Rockingham County Public Library
- UNC Health Rockingham



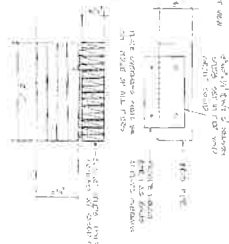
- UNC Health Rockingham
- Schewels Home Dollar General Elizabeth Pizza Eden Hibbett Sports AutoZone Auto Parts Di'lshi Yogurt, Coffee & Smoothies
- Tractor Supply Co. Food Lion Chopstix NextCare Urgent Care
- Uptown Tavern The Roasted Bean Hive Blue Bell Marker's Market That Little Pork Shop The Twisted Market & Catering Halo Salt & Yoga Piedmont Surfaces Tianos Event Center
- Planet Fitness Burkes Outlet Badcock Home Furniture Hardee's CVS Pharmacy



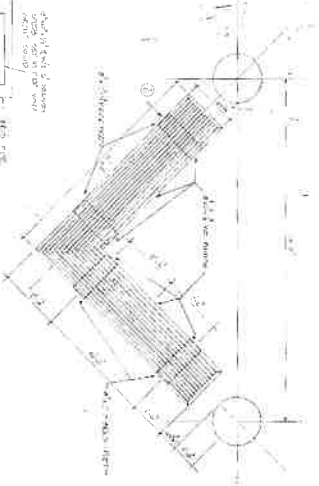
REFLECTED CLG. PLAN AT ENT. SOFFIT



DETAIL - PIER



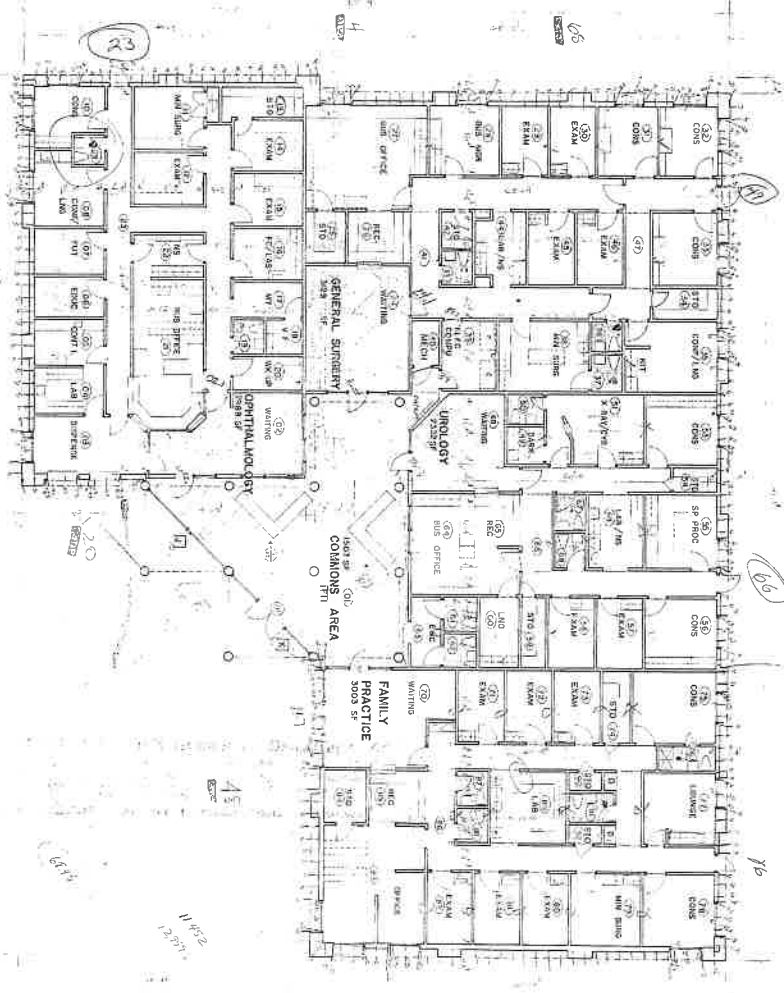
PLAN - COMMONS BENCH



13
25
57
174
57
67

ROOM PLAN

12,480 SF



30-374

45-1

45

4508

1,871

1,871

Room 305 is A1c

A1 MEDICAL ARTS BUILDING EDEN NORTH CAROLINA		A. Hyatt Hammond Associates, Inc. Architects 479 North Elm Street Greensboro N.C. 372-5415 27421	Engineers Planners 125 Ward Drive Asheboro N.C. 625-9106 27203	OVERALL FLOOR PLAN Copyright 1961, A. Hyatt Hammond, Inc.
		Members of American Institute of Architects		REFERENCE
		12,480 SF		1,871
		30-374		45-1