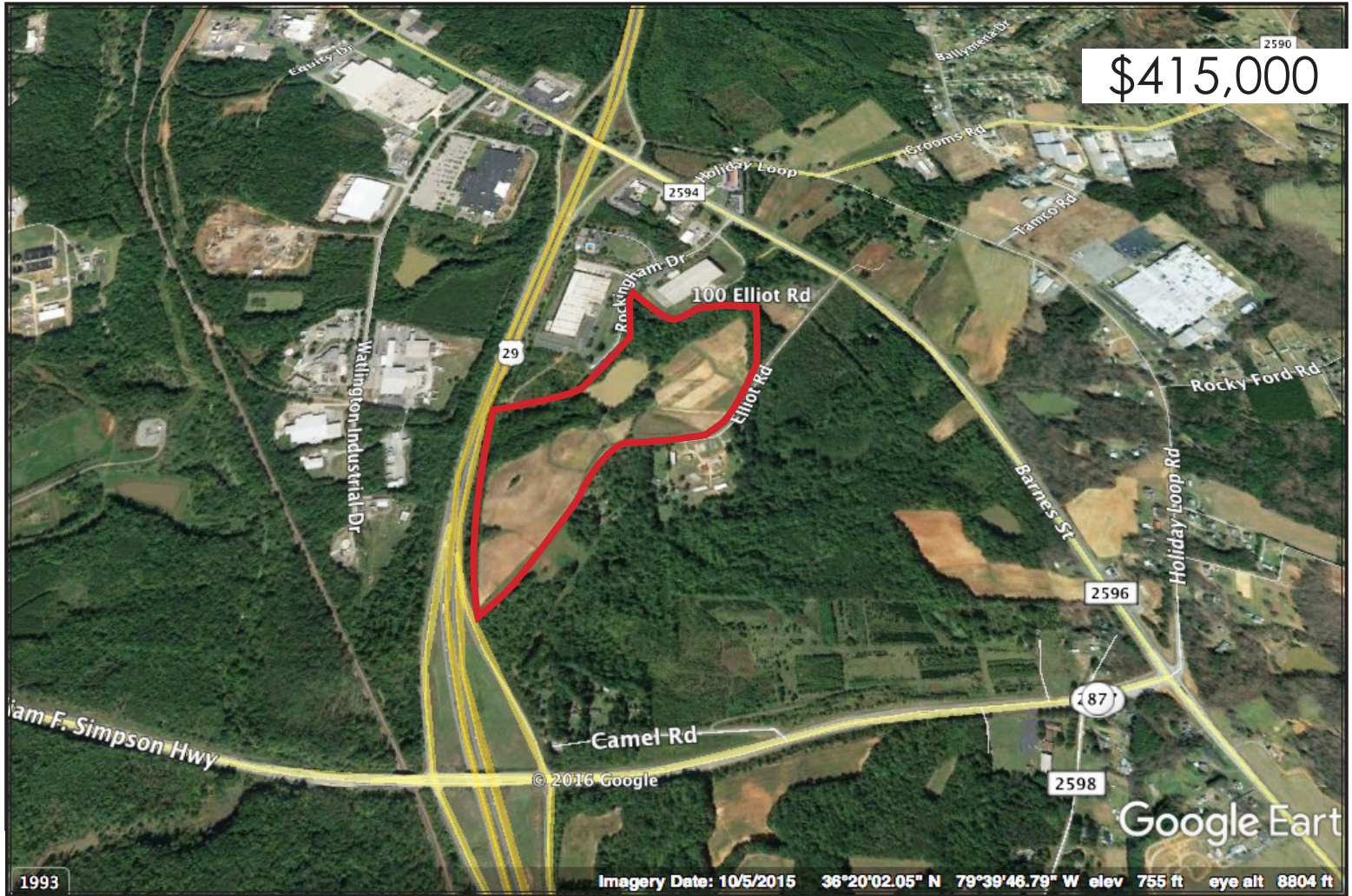




100 Elliot Rd, Reidsville NC

FOR SALE



PROPERTY OVERVIEW

Type	Land - Industrial	Property User	Any User	Topography	Slopes-Gentle
Subtype	Manufacturing	Best Use	Industrial	Topography	Pond
Acres	48.80	Zoning	HI Heavy Industrial		
Total SqFt	48.8 Acres	Within City Limits	Yes		



Phillip Price
 Office: 336.761.1130
 Cell: 336.558.7015
 Phil@millerhatcher.com

One of last heavy industrial sites along US 29 in Rockingham County. Short distance to Greensboro. Clear land/never developed. Utilities available to the site. Two minutes to the road connection at US 29. Good location for shipping and for employees. Aggressive county business support and excellent training programs available for new employees.

2150 Country Club Rd, Suite 230 | Winston-Salem, NC 27104 | 336.761.1130 | www.millerhatcher.com