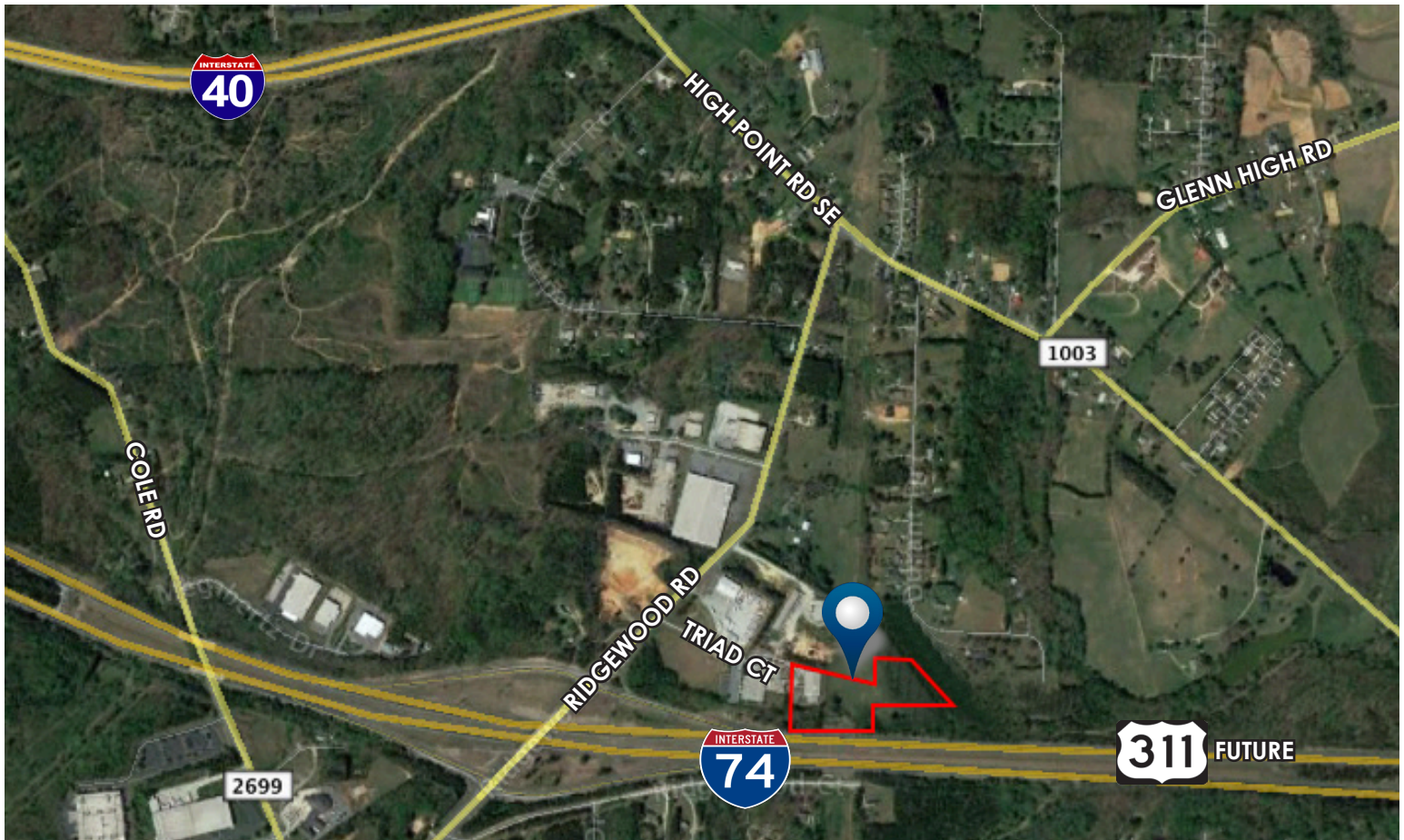




3540 TRIAD COURT, WINSTON-SALEM, NC 27107

SALE/LEASE



PROPERTY OVERVIEW

- 17,860 SF
- Commercial/Flex Space
- Good Access
- Close access to US 40 & US 74 (future Hwy 311)
- \$615,000/\$3.95 SF



No warranty or representation is made for the accuracy or assumptions of the information contained herein. All information is subject to omissions, errors, price changes, prior sale, and/or withdrawal without notice. No liability is assumed for any inaccuracy of the information contained herein.



PHIL PRICE
Direct: 336.283.0643
Cell: 336.558.7015
Email: phil@millerhatcher.com



MILLER HATCHER

COMMERCIAL REAL ESTATE

3540 TRIAD COURT, WINSTON-SALEM, NC 27107

SALE/LEASE

LOCATION

Address	3540 Triad Court				
City	Winston-Salem	Zip	27107	County	Forsyth

PROPERTY DETAILS

Property Type	Flex	Acres ±	4.96	Dimensions ±	150' x 100'
Available SqFt ±	17,860	Floors	1	Ceiling Height ±	14±/17±
Building SqFt ±	17,860	Restrooms	4	Parking	20
Office SqFt ±	2,860	Flooring	Concrete	Bay Size ±	25' x 50'
Year Built	1988	Roof	Metal	Docks ±	2
Renovated	N/A	Building Exterior	Metal	Drive-ins ±	1

UTILITIES

Electrical	3 Phase	Sewer	Septic	Heat	Gas
Water	Public	Air	Office		

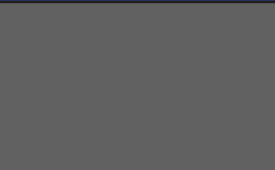
TAX INFO

Zoning	LI	Tax Block	2644	Tax PIN	6854-71-9366
--------	----	-----------	------	---------	--------------

PRICING

Price	\$615,000	Rent/mo ±	\$5,879	Lease Type	NNN
Price/SqFt	\$34.43	Lease Rt/SqFt ±	\$3.95	Tax Value	\$626,000

COMMENTS



No warranty or representation is made for the accuracy or assumptions of the information contained herein. All information is subject to omissions, errors, price changes, prior sale, and/or withdrawal without notice. No liability is assumed for any inaccuracy of the information contained herein.



PHIL PRICE
 Direct: 336.283.0643
 Cell: 336.558.7015
 Email: phil@millerhatcher.com

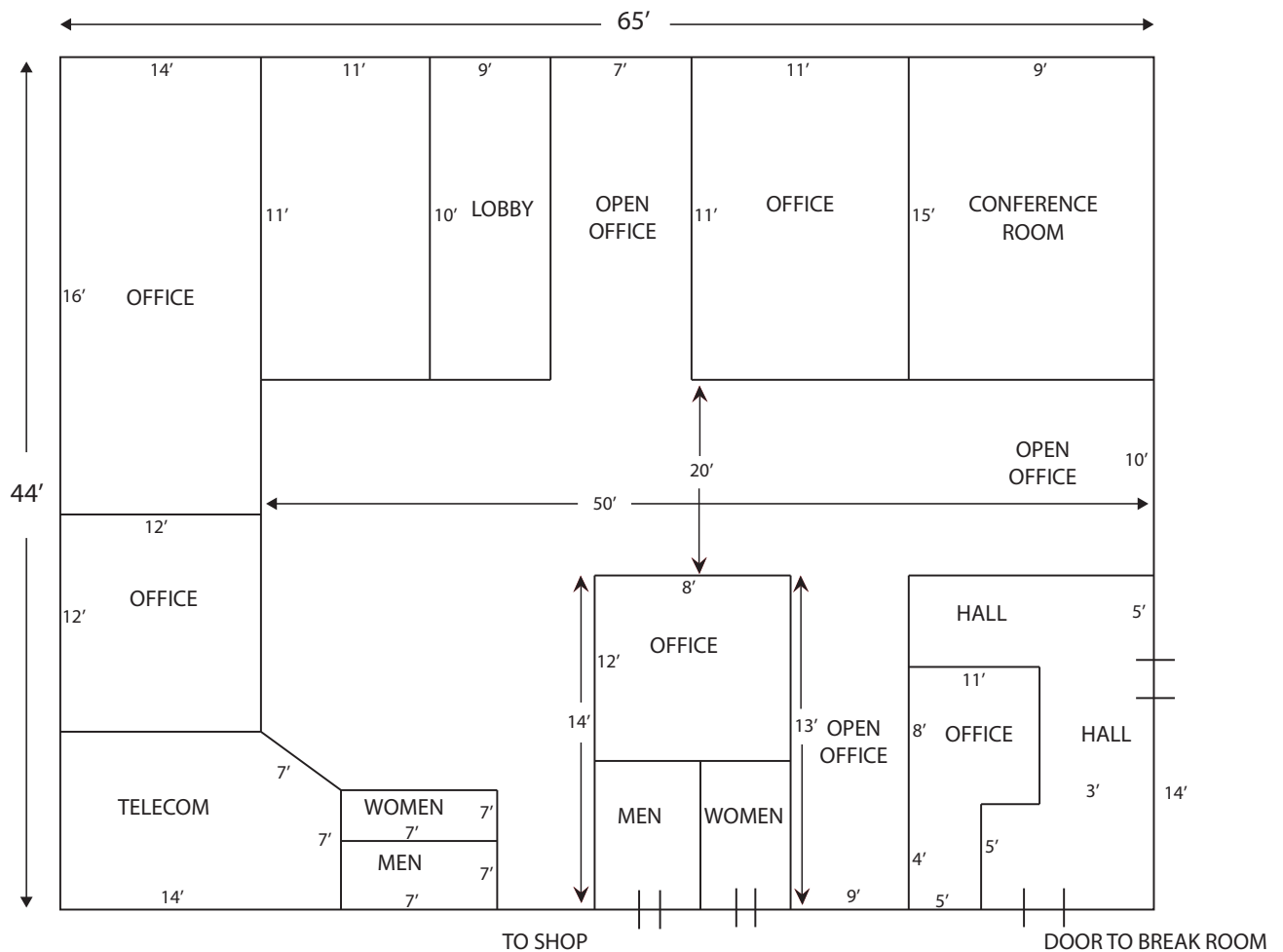


3540 TRIAD COURT, WINSTON-SALEM, NC 27107

SALE/LEASE

OFFICE FLOOR PLAN

NOT TO SCALE



No warranty or representation is made for the accuracy or assumptions of the information contained herein. All information is subject to omissions, errors, price changes, prior sale, and/or withdrawal without notice. No liability is assumed for any inaccuracy of the information contained herein.



PHIL PRICE
Direct: 336.283.0643
Cell: 336.558.7015
Email: phil@millerhatcher.com

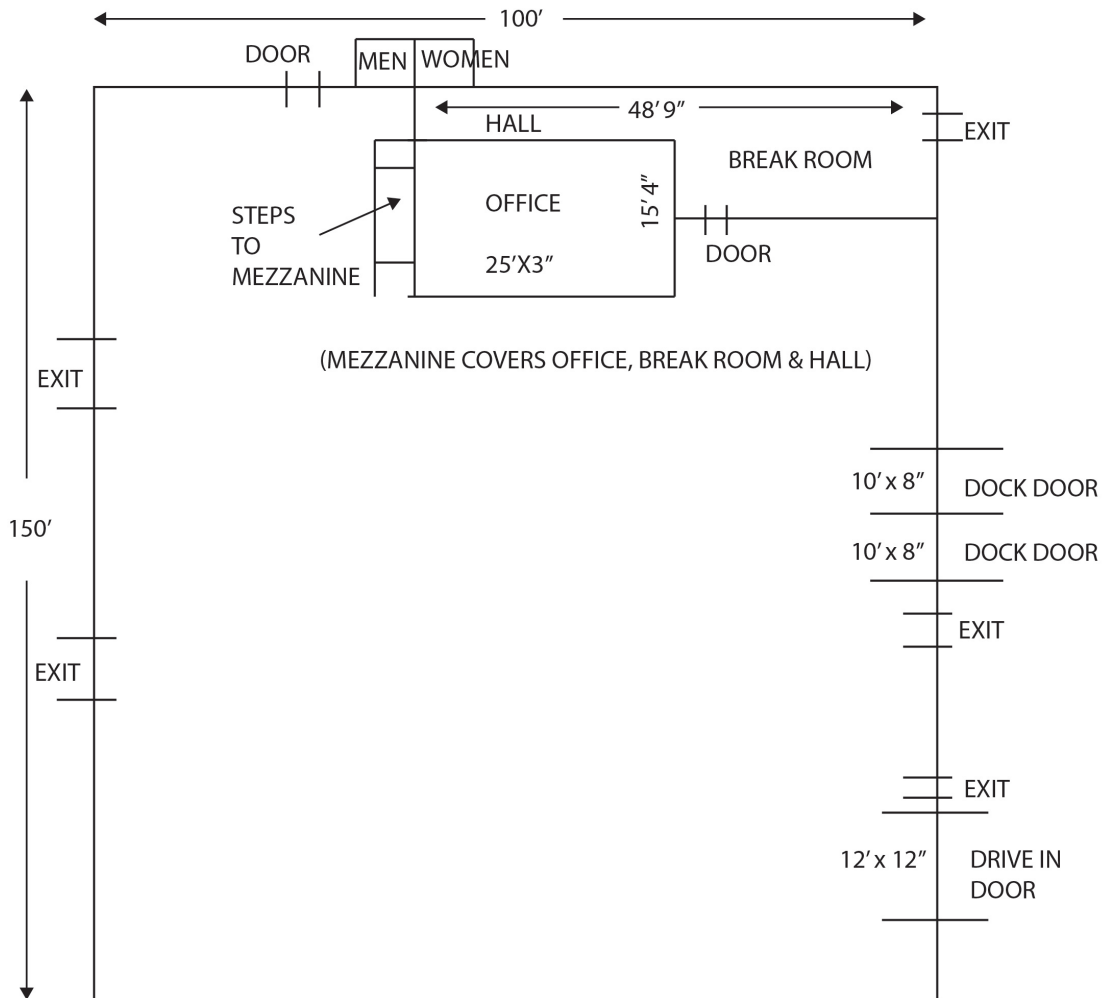


3540 TRIAD COURT, WINSTON-SALEM, NC 27107

SALE/LEASE

WAREHOUSE FLOOR PLAN

NOT TO SCALE



No warranty or representation is made for the accuracy or assumptions of the information contained herein. All information is subject to omissions, errors, price changes, prior sale, and/or withdrawal without notice. No liability is assumed for any inaccuracy of the information contained herein.

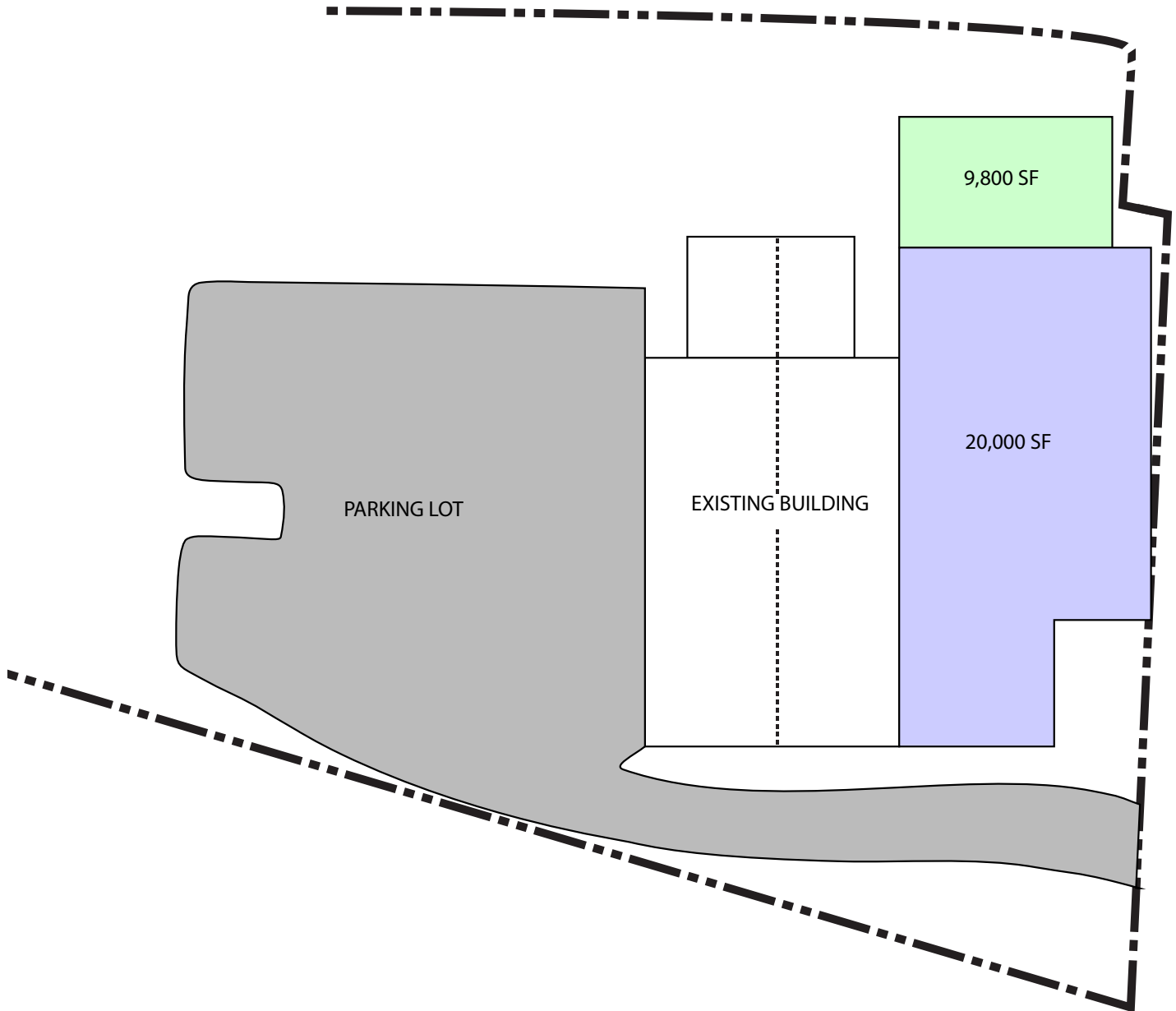


PHIL PRICE
Direct: 336.283.0643
Cell: 336.558.7015
Email: phil@millerhatcher.com



POSSIBLE EXPANSION

NOT TO SCALE



No warranty or representation is made for the accuracy or assumptions of the information contained herein. All information is subject to omissions, errors, price changes, prior sale, and/or withdrawal without notice. No liability is assumed for any inaccuracy of the information contained herein.



PHIL PRICE
Direct: 336.283.0643
Cell: 336.558.7015
Email: phil@millerhatcher.com

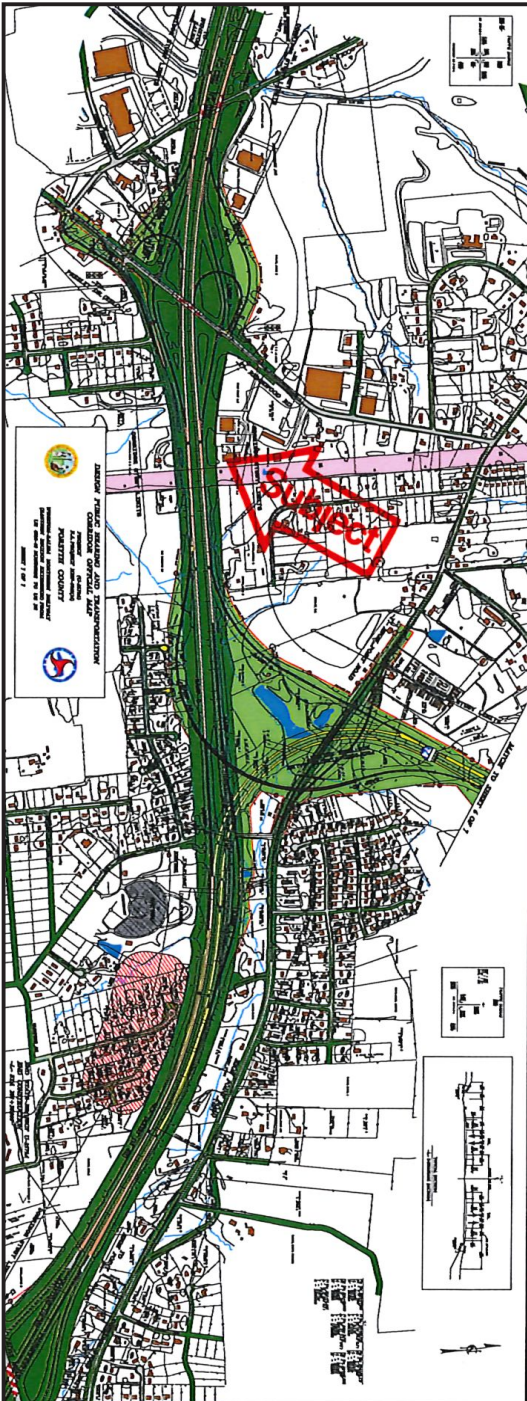


MILLER HATCHER

COMMERCIAL REAL ESTATE

3540 TRIAD COURT, WINSTON-SALEM, NC 27107

SALE/LEASE



US 74 (from US 421/US 40)
Merging with US 311
(Approx. Date 2025)



PHIL PRICE
Direct: 336.283.0643
Cell: 336.558.7015
Email: phil@millerhatcher.com