



# MILLER HATCHER

## COMMERCIAL REAL ESTATE

3146 STARLIGHT DR. WINSTON-SALEM, NC 27107

FOR LEASE



ROD HATCHER  
Direct: 336.283.0411  
Mobile: 336.413.8550  
Email: Rod@millershatcher.com

2150 Country Club Rd. Suite 230 | Winston-Salem, NC 27104 | 336.761.1130 | [www.millerhatcher.com](http://www.millerhatcher.com)



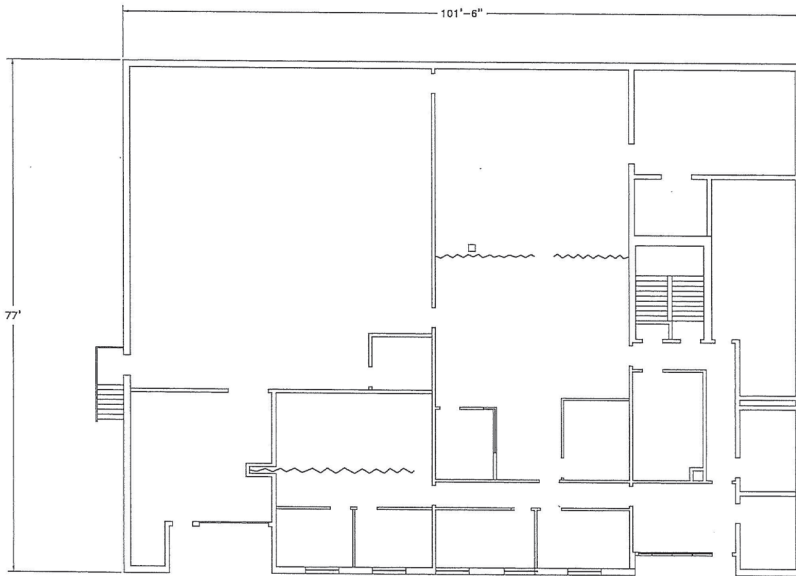


# MILLER HATCHER

## COMMERCIAL REAL ESTATE

3146 STARLIGHT DR. WINSTON-SALEM, NC 27107

OVERVIEW



Floorplan - Not to Scale



### PROPERTY DETAILS

Property Type	Industrial	Floors	2	Dimensions ±	101' x 77'
Available SF ±	15,240	Restrooms	2	Ceiling Height ±	9'
Year Built	1966	Roof	Built up	Docks	1
Renovated	1978	Flooring	Tile/Concrete	Sprinklered	No

### UTILITIES

Electrical	480 V, 120V, 277V	Water	Yes	Sewer	Yes
------------	-------------------	-------	-----	-------	-----

### TAX INFO

Zoning	LI	County	Forsyth	Tax PIN	6834-51-5071
--------	----	--------	---------	---------	--------------

### PRICE

Lease SF ±	\$5.95				
------------	--------	--	--	--	--

### COMMENTS

Retail, discount, offices, commercial kitchen, conference room, and open storage space. Great "last mile" location.

No warranty or representation is made for the accuracy or assumptions of the information contained herein. All information is subject to omissions, errors, price changes, prior sale, and/or withdrawal without notice. No liability is assumed for any inaccuracy of the information contained herein.

follow us:



millerhatcherinc



MillerHatcherRealEstate



miller\_hatcher



MillerHatcherCommercialRealEstate

2150 Country Club Rd. Suite 230 | Winston-Salem, NC 27104 | 336.761.1130 | [www.millerhatcher.com](http://www.millerhatcher.com)