



3303 HEALY DR. W-S, NC 27103 - SUITE A/B

FOR LEASE



PROPERTY OVERVIEW

- Nice Functional Office space
- Excellent Floor Plan
- Close access to Silas Creek Parkway, US Business 40, US 421 & I-40
- \$16.50 SF



KEVIN HATCHER
 Direct: 336.283.0419
 Cell: 336.448.8205
 kevin@millerhatcher.com

No warranty or representation is made for the accuracy or assumptions of the information contained herein. All information is subject to omissions, errors, price changes, prior sale, and/or withdrawal without notice. No liability is assumed for any inaccuracy of the information contained herein.

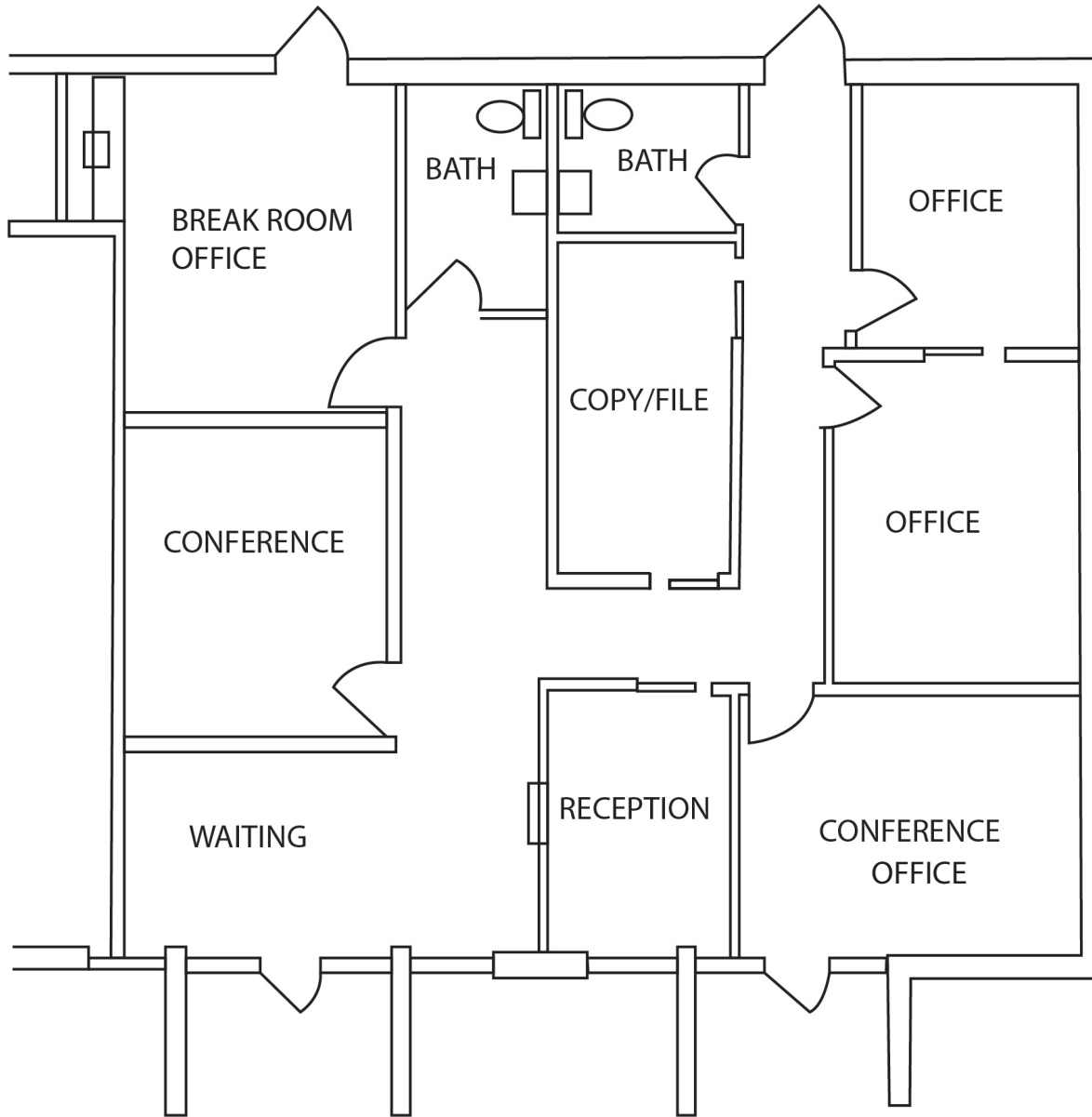


MILLER HATCHER

COMMERCIAL REAL ESTATE

3303 HEALY DR. W-S, NC 27103 - SUITE A/B

FLOORPLAN



Floor Plan - Not to Scale



KEVIN HATCHER
Direct: 336.283.0419
Cell: 336.448.8205
kevin@millerhatcher.com

No warranty or representation is made for the accuracy or assumptions of the information contained herein. All information is subject to omissions, errors, price changes, prior sale, and/or withdrawal without notice. No liability is assumed for any inaccuracy of the information contained herein.

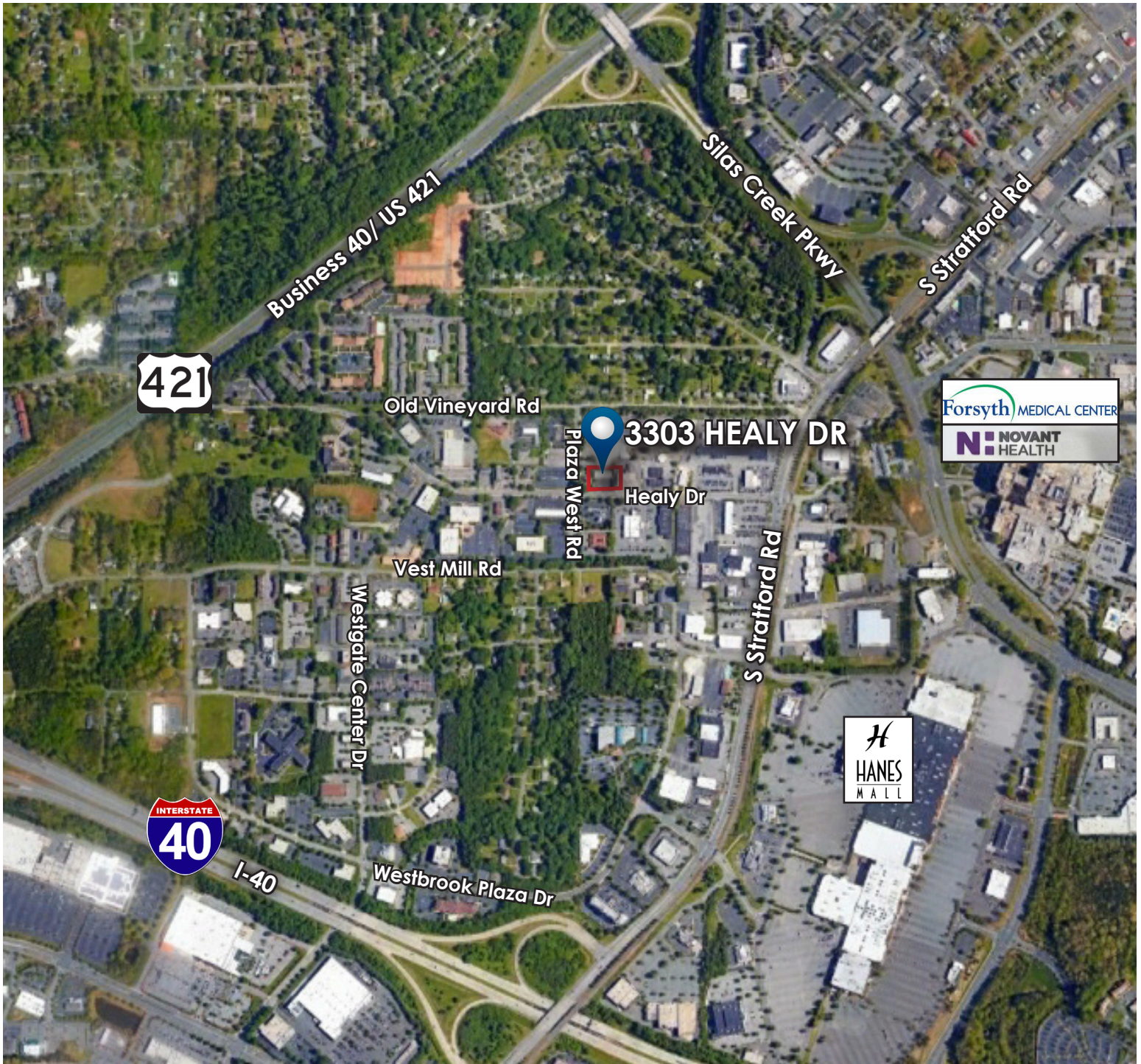


MILLER HATCHER

COMMERCIAL REAL ESTATE

3303 HEALY DR. W-S, NC 27103 - SUITE A/B

LOCATION



KEVIN HATCHER
Direct: 336.283.0419
Cell: 336.448.8205
kevin@millerhatcher.com

No warranty or representation is made for the accuracy or assumptions of the information contained herein. All information is subject to omissions, errors, price changes, prior sale, and/or withdrawal without notice. No liability is assumed for any inaccuracy of the information contained herein.



MILLER HATCHER

COMMERCIAL REAL ESTATE

3303 HEALY DR. W-S, NC 27103 - SUITE A/B

DETAILS

LOCATION

Address	3303 Healy Dr. Suite A/B				
City	Winston-Salem	Zip	27103	County	Forsyth

PROPERTY DETAILS

Property Type	Office	Acres ±	0.19	Flooring	Carpet
Available SqFt ±	1,770	Floors	1	Roof	Flat
Office SqFt ±	1,770	Restrooms	2	Parking	20
Building SqFt ±	4,821	Renovated	Yes	Ceiling Height ±	8 1/2'

UTILITIES

Electrical	110Amps	Sewer	City	Heat	Gas
Water	City	Air	Central		

TAX INFO

Zoning	GO	Tax Block		Tax PIN	
--------	----	-----------	--	---------	--

PRICING

Rent/mo ±	\$2,433.75	Lease Type	Modified Gross
Lease Rt/SqFt ±	\$16.50	Tax Value	\$748,500

COMMENTS

Nice Functional office space. Excellent floor plan. Close access to Silas Creek Parkway, US Business 40/US 421 and I-40. Tenant pays janitorial, phone and internet



KEVIN HATCHER
 Direct: 336.283.0419
 Cell: 336.448.8205
 kevin@millerhatcher.com

No warranty or representation is made for the accuracy or assumptions of the information contained herein. All information is subject to omissions, errors, price changes, prior sale, and/or withdrawal without notice. No liability is assumed for any inaccuracy of the information contained herein.