

ConfiguraAdvance®

Adjustable comfort chair with integrated pressure care and postural support



Accora

Poor seating can severely impact quality of life, leading to preventable harms like falls, tissue damage, and behavioral changes.

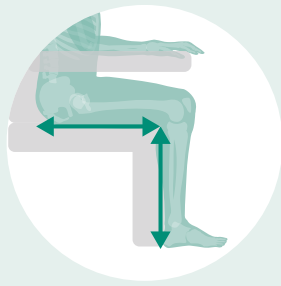
It also increases the burden on caregivers¹⁻⁷. The right seating, particularly a correctly fitting armchair, can mitigate these risks by ensuring proper height, depth, and width for even pressure distribution, reducing shear forces, and providing supportive seating to prevent sliding or leaning.

Accora's approach to seating prioritizes the fundamental elements of size, pressure, and posture, essential for a healthy, safe, and functional sitting position. The Configura Advance chair exemplifies this approach with its versatile design and customizable fit, making it suitable for various care environments and a wide range of needs. This design philosophy ensures optimal support and comfort, enhancing well-being and reducing caregiver strain.

“Chairs we’ve used previously weren’t as comfortable, workable or accommodating”⁸

John, Principal Occupational Therapist





Size

Change the seat width, depth and height according to individual needs, all without tools. An optional height and angle adjustable footplate is also available.

Tool-less adjustments

The multi-adjust capability, tool-less **ClickLock™ technology**, and measuring guides of the Configura Advance chair make it easy to create a great custom fit.



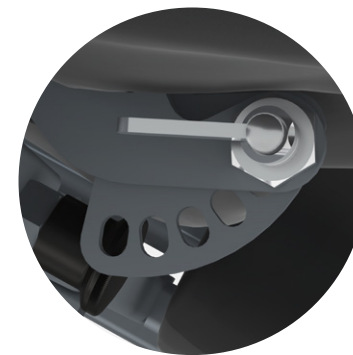
Width adjustment

Adjust seat width from 400 mm (16") to 550 mm (22").



Depth adjustment

Adjust seat depth from 400 mm (16") to 550 mm (22").



ClickLock bracket



Tool-less adjustment

“I have so much control over the positioning of my residents; I can really help them...”⁸

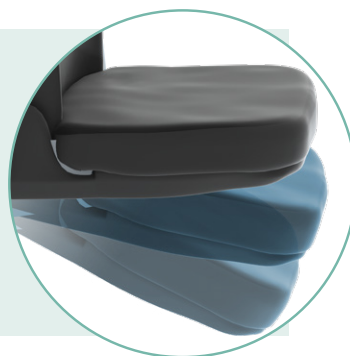
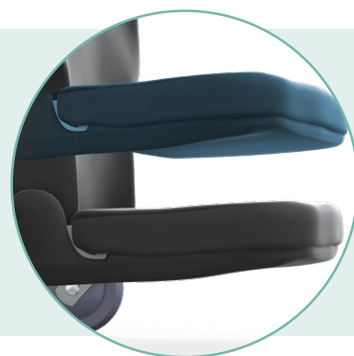
Joselito, Director of Rehabilitation



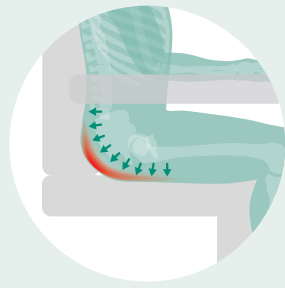
Height adjustment

Adjust footplate height from 330 mm (13") to 530 mm (21").

Adjust footplate angle from 90 - 120 degrees



Measuring guide



Pressure

Configura Advance's seating surface is designed to help maintain a healthy skin environment and reduce the potential for deep tissue injury. Minimizing shear and ensuring appropriate pressure care are critical factors in reducing the risk of pressure ulcer development.^{1,3-7,9}

"Our occupational therapists are overjoyed with the functionality of this chair..."⁸

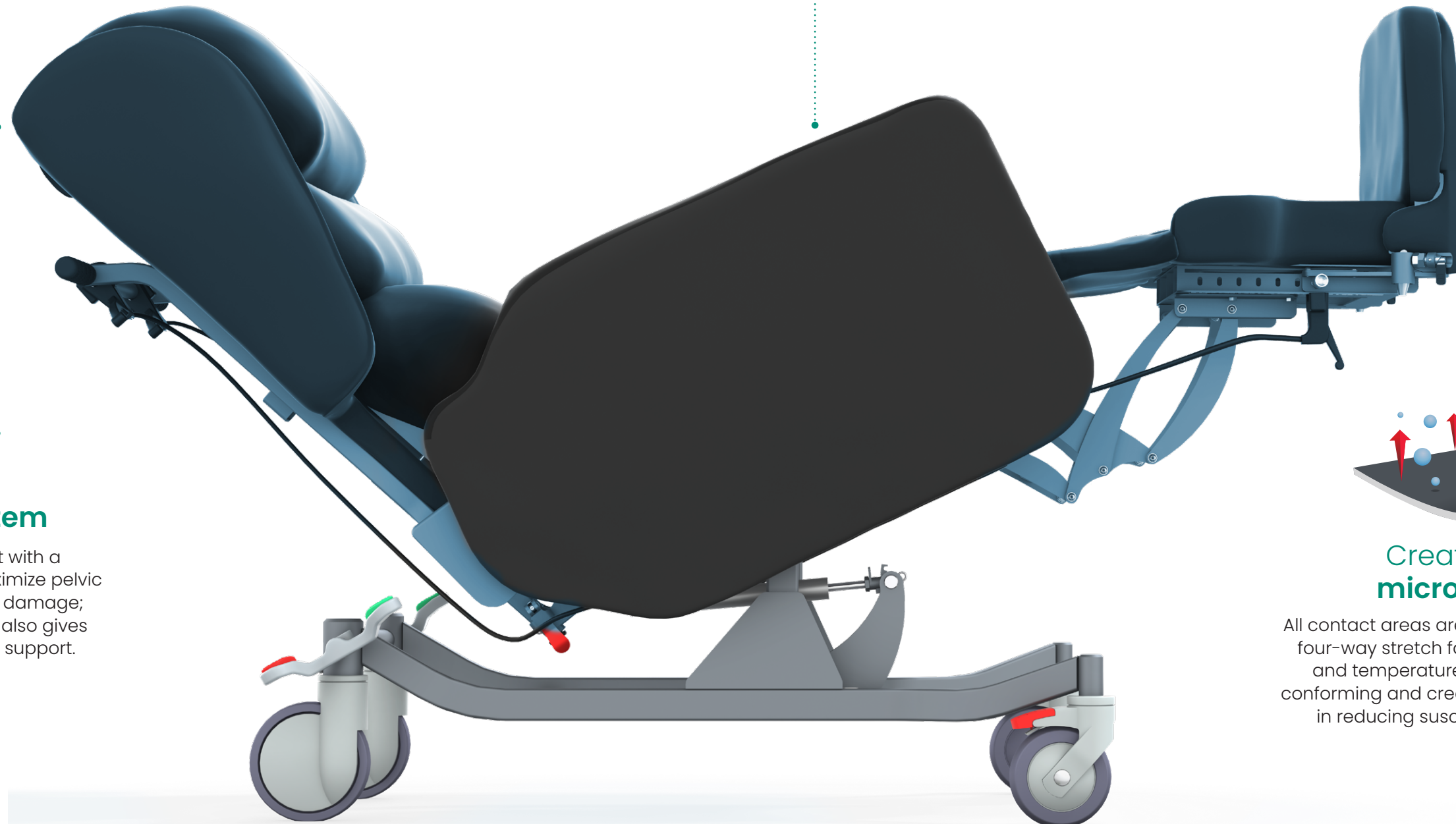
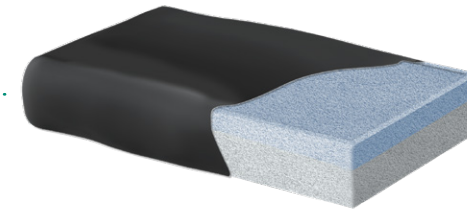
Joselito, Director of Rehabilitation

Reducing the risk of pressure ulcers

BodyMove™ technology allows the back and legrest to accommodate natural changes in the length of the spine and hamstrings when reclined or when the legs are extended, helping to reduce shear forces over the back and sacral areas and improve leg positioning.

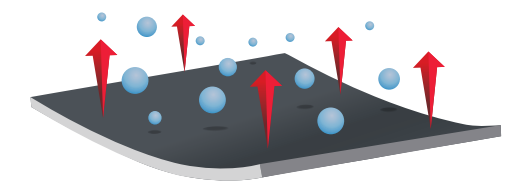
Built-in pressure care

A visco-foam cushion suitable for individuals at high risk of developing pressure ulcers comes as standard; however, carers can easily substitute any cushion type, depending on a person's needs. And its integration with the seat base ensures zero impact on seat height.



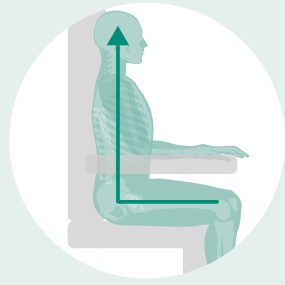
Adaptive BodyMove system

Reduced-shear backrest with a 130-degree recline helps maximize pelvic stability and prevent tissue damage; the fully articulating legrest also gives superior leg elevation and support.



Creating the right microenvironment

All contact areas are covered in a vapor permeable, four-way stretch fabric, helping prevent moisture and temperature build-up and maintaining a conforming and crease-free surface, which is crucial in reducing susceptibility to tissue damage.¹⁵



Posture

No one's posture is the same.

So having the ability to adapt or correct this where needed can make all the difference in helping a person live their best life.



Take a closer look at
Configura Advance Chair

View video to see key functionality.

Waterfall backrest

Configura Advance comes with a waterfall backrest providing comfortable, cushioned support.

Adjusting the padding or placing the cushions in a vertical orientation allows deeper immersion and is beneficial if a person has a kyphosis and where extra depth is needed to help achieve a restful and functional position.

Postural backrest

The postural backrest is our most highly customisable backrest; all three pillows are height, depth and angle adjustable, while the top two pillows are angle-adjustable to provide greater support. Deeper immersion and is beneficial if a person has a kyphosis and where extra depth is needed to help achieve a restful and functional position.

Tilt-in-space

Configura's Advance's tilt-in-space mechanism retains the seat base and backrest angle when tilting the chair backward; this helps maintain postural alignment, increases the surface area available for support, relieves pain and pressure, and lowers the likelihood of falls.

For individuals with more complex postural requirements, there is the option of a postural backrest and lateral supports.

"...the quality of their chair determines the quality of their life"⁹



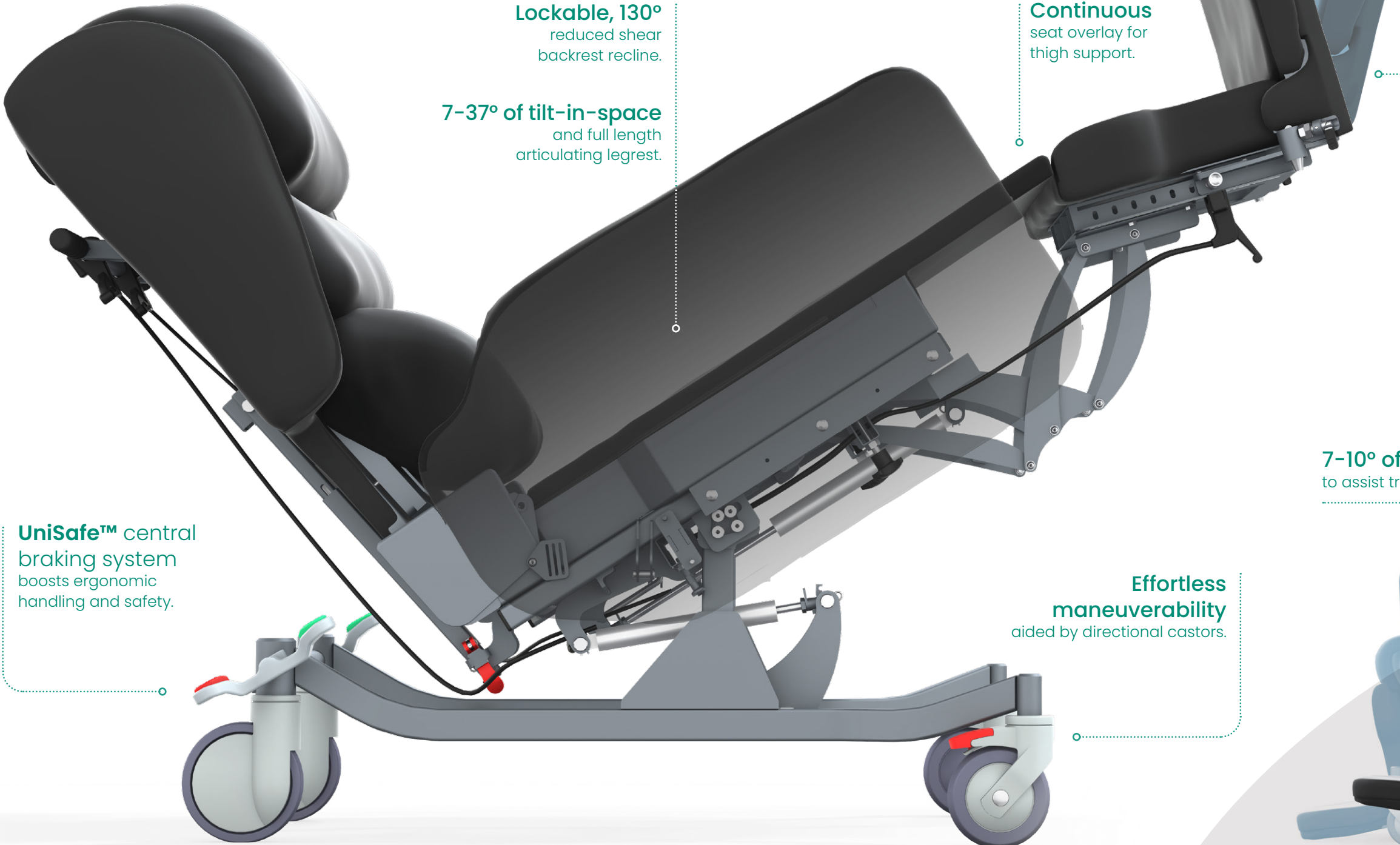


.....
Helping residents to be comfortable,
stay social and as **independent as possible**
.....

Understanding everyone's needs

A wealth of features come as standard, plus some optional ones too, supporting clinicians and caregivers in their day-to-day work and helping promote residents' health and independence.

The Configura Advance chair is a cost-effective and versatile solution for anyone needing more specialist seating. And with an emphasis on comfort and safety, it can contribute to a facility's reputation for excellence.



Lockable, 130°
reduced shear
backrest recline.

7-37° of tilt-in-space
and full length
articulating legrest.

Continuous
seat overlay for
thigh support.

UniSafe™ central
braking system
boosts ergonomic
handling and safety.

**Effortless
maneuverability**
aided by directional castors.



**Optional
dropdown
armrests**
facilitate assisted
transfers and sling
access for hoists.

Removable, angle-adjustable
footplate provides foot and ankle support.



7-10° of forward tilt
to assist transfers.

Optional postural accessories



Profiled headrest accessory



Lateral supports accessory



Postural supports accessory

Accora resources

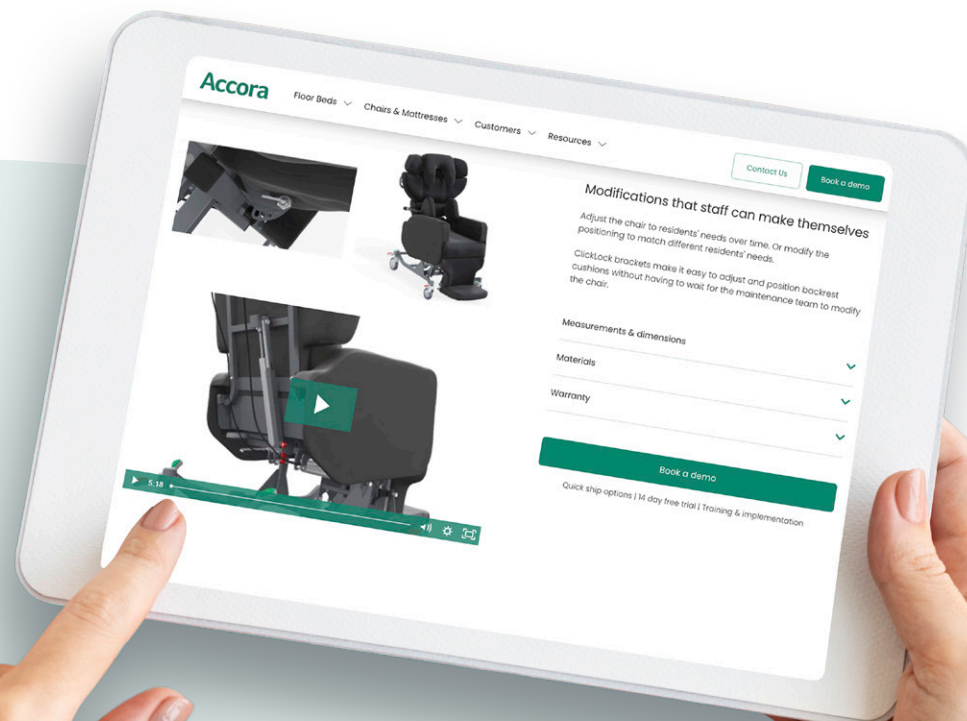
Product knowledge and advice

All the information you need to get the best out of our products for your residents, provided virtually or face-to-face.

Visit us.accora.care for more information

Book a demonstration

If you would like to find out more about this chair.



Technical specification

Seat height	620 mm (24")
Seat width	400 - 550 mm (16 - 22")
Seat depth	400 - 550 mm (16 - 22")
Footplate height adjustment	320 mm - 540 mm (13 - 21")
Armrest height	8" as standard – adjustable with dropdown armrest option
Overall width	700 mm (28")
Overall height	1300 mm (51")
Overall length	Without footplate 940 mm (37")
Overall length	With footplate (1300 mm)
Total length	Full tilted, reclined and legs elevated 1880 mm (74")
Tilt-in-space range	7-37 degrees
Forward tilt	7-10 degrees
Backrest recline	130 degrees
Legrest angle adjustment	75-160 degrees
Maximum patient weight	160 kg (352 lbs)
Mechanism	Manual tilt-in-space
Fabric:	Vapor permeable on all contact areas; vinyl fabric on non-contact areas



The Configura Advance chair is suitable for

- Non-ambulant residents
- Residents with limited knee extension
- Residents who need to be transported from room to room
- Moderate postural requirements
- Complex postural requirements, e.g., fixtures and contractures
- Residents with stiffness or fixtures at the hips
- Stroke and neurological conditions

References

1. AWTVNF, PUPIS. (2019) *All Wales best practice guidelines: seating and pressure ulcers*. Available from: https://www.pmguk.co.uk/web/data/page_files/Best%20Practice/All%20Wales-Seating%20and%20PUs_FINAL.pdf [Accessed 12 February 2022].
2. Beldon, P. (2007) Sitting safely to prevent pressure damage. *Wound Essentials*. (2), 102-104. Available from: [file:///C:/Users/User/Downloads/wound-essentials-2-sitting-safely-to-prevent-pressure-damage%20\(3\).pdf](file:///C:/Users/User/Downloads/wound-essentials-2-sitting-safely-to-prevent-pressure-damage%20(3).pdf) [Accessed 10 February 2022].
3. Blackler, A., Brophy, C., O'Reilly, M., and Chamorro-Koc, M. (2018) Seating in aged care: physical fit, independence and comfort. *SAGE Open Medicine*. (6), 1-17. Available from: doi.org/10.1177/2050312117744925.
4. Nitz, J.C. (2000) The seating dilemma in aged care. *Australian Journal of Physiotherapy*. 46 (1), 53-58. Available from: [doi:10.1016/s0004-9514\(14\)60314-7](https://doi.org/10.1016/s0004-9514(14)60314-7).
5. Stephens, M., Bartley, C.A. (2018) Understanding the association between pressure ulcers and sitting in adults what does it mean for me and my carers? Seating guidelines for people, carers and health and social care professionals. *Journal of Tissue Viability*. 27 (1), 59-73. Available from: [doi:10.1016/j.jtv.2017.09.004](https://doi.org/10.1016/j.jtv.2017.09.004).
6. Moore, Z. and van Etten, M. (2015) Ten top tips: seating and pressure ulcer prevention. *Wounds International*. 6 (2), 11-16. Available from: <https://www.woundsinternational.com/resources/details/ten-top-tips-seating-and-pressure-ulcer-prevention> [Accessed 12 February 2022].
7. Ip, K.W.M., Sum, C.M.W., Choi, M.M.C., Yue, A.S.Y., Hui, E. and Lum, C.M. (2007) The effect of improving sitting posture in nursing home residents on the burden of care. *Hong Kong Medical Journal*. Vol 13 (Supplement 1), S4-7. Available from: <https://www.hkmj.org/system/files/hkm0702sp1p4.pdf> [Accessed 17 February 2022].
8. Data on file
9. Tierney, M. (2022) *The clinician's seating handbook: a reference guide for clinical seating provision*. 6th ed. Available from: <https://seatingmatters.com/gb-ie/> [Accessed 16 February 2022].

USA:

Accora Inc.

9210 Corporate Blvd. Suite 120, Rockville, MD 20850

T: 301 560 2400 **E:** information@accora.care **W:** us.accora.care

UK:

Accora Ltd

Charter House, Barrington Road, Orwell, Cambridge SG8 5QP

T: +44 (0) 1223 206 100 **E:** info@accora.care **W:** accora.care



* and [™] are trademarks of Accora Limited.

As our policy is one of continuous improvement, we reserve the right to modify designs without prior notice.

Accora

BRO-SCI-003CA Rev02