

# Mackworth SA-350



User Manual

---

<u>User Manual Index</u>	<u>Page</u>
<b>Symbols used</b>	3
<b>1. Introduction</b>	4
<b>2. Contraindications</b>	4
<b>3. Intended use / Overview of the SA350 Stand Aid</b>	5
<b>4. Assembly instructions</b>	6-9
<b>5. Stand Aid features</b>	
5.1 Emergency stop button	10
5.2 Emergency lowering / raising (Manual)	10
5.3 Emergency lowering / raising (Electrical)	10
<b>6. Control box</b>	11
6.1 LCD display	12
<b>7. Handset</b>	13
<b>8. Electrical charging lead on mobile hoist</b>	13
<b>9. Foot bar</b>	14
<b>10. Operating instructions</b>	15
10.1 To alter the leg width	15
10.2 Positioning	15
10.3 Raising and Lowering	15-16
<b>11. Batteries</b>	17-18
<b>12. Safety precautions</b>	19-20
<b>13. Safety check list</b>	
13.1 Daily check list	21
13.2 Warning notes	21
<b>14. Technical Specification</b>	
14.1 Dimensions and weights	22
14.2 Electrical specifications	22
14.3 Maximum lifting height and leg width	23
14.4 Main assembly component list	24
14.5 Standing support and posterior sling assembly	
14.5.1 Application	25
14.5.2 Sling inspection	25
14.5.3 Compatibility	26
14.5.4 Maximum load (SWL)	26
14.6 How to fit the standing support sling	25-27
14.6.1 Using the posterior sling	28-29
<b>15. Fault finding / Maintenance</b>	
15.1 Service / Maintenance	30
<b>16. Recommended cleaning instruction</b>	31-33
<b>17. Test certificate and guarantee</b>	34
<b>18. Standards applied</b>	35
<b>19. Service record history</b>	
19.1 Initial information	36
19.2 Service record history	37-42
<b>20. User notes</b>	43
<b>Contact information</b>	44

## Symbols in use Index



Warning – Consult instructions for use



Caution – pinch point



Manufacturer



Please observe local laws on recycling



Two-person lift may be required



Refer to user manual



Date of manufacture



Serial number



**CAUTION: DO NOT ATTEMPT TO USE THIS EQUIPMENT WITHOUT FIRST UNDERSTANDING THE CONTENTS OF THIS MANUAL.**

## **1. Introduction**

Before using this equipment, and to ensure the safe operation of your stand aid, carefully read this entire manual, especially the section on “Cautions”. The stand aid can easily be operated by one person.

The stand aid is designed to be used in conjunction with Prism Medical UK accessories and slings although other manufacturers slings can be used following a risk assessment.

Please refer to any user guides supplied with these components and refer to them while reviewing this manual.

Should any questions arise from reviewing this manual contact your local authorised Prism Medical UK Representative.

Failure to comply with warnings in this manual may result in injury to either the operator, or the individual being raised/transferred. Damage to the stand aid and/or related components may also occur. Be sure that the contents of this manual are completely understood prior to using this device.

Store this manual with the documents included with the stand aid and sling(s). Contents of this manual are subject to change without prior written notice.

## **2. Contraindications**

There are no known “contraindications” associated with the usage of the aluminium mobile hoist and its accessories, provided they are used a per manufacturer’s recommendations and guidelines.

However, it is recommended that a client specific assessment is completed by a trained and knowledgeable health care professional to determine the method of transfer.

Prism Medical UK does not recommend a required number of caregivers for the use of our products. This information and recommendation can only be provided after a thorough personalized, case specific assessment, as there are many factors that can influence these decisions.

It is however, “obligatory” that a client that is assessed as being an independent user of our ceiling hoist technology have the ability to receive assistance, during the transfer, in the event of a hoist malfunction or personal concern.

This assistance can be provided in the form of; a nearby qualified caregiver, a phone, a communication device etc.

### 3. Intended use / Overview of the S-Series of Mobile Hoists

The stand aid is a standing aid used by health care professionals to transfer clients. The device makes it possible to move mobility impaired individuals with minimal strain or risk to the caregiver, while providing complete safety, dignity and comfort for the client.

The stand aid is one of two components that make up this technology. The other component, the sling, is a specially designed fabric accessory that attaches to the hoist by means of a hook and loop strap system, and holds an individual in comfort while the hoist, or transfer takes place. The sling is an accessory for the more movement affected individuals. Please refer to any user guides supplied with the sling and reference them while reviewing this manual.

The stand aid has the ability to hoist an individual up from one position such as a bed for example, aided by the user themselves along with the carer, then move the individual to another position within the room and finally placing the individual into a chair etc. The functions of the use of the device are aided by the electronic movement aid accomplished by pressing buttons on the hand control.

The hand control is attached to the stand aid. Due to the design of the system, it takes very little effort to press a button to perform the desired motion.

Please familiarise yourself with the components of the mobile hoist by referring to the diagram on the next page.

<b>Model table for the Mackworth S-Series Mobile Hoist</b>	
<b>Product code</b>	<b>Product description</b>
Mackworth SA350*	SA350 Stand Aid (350lb SWL)

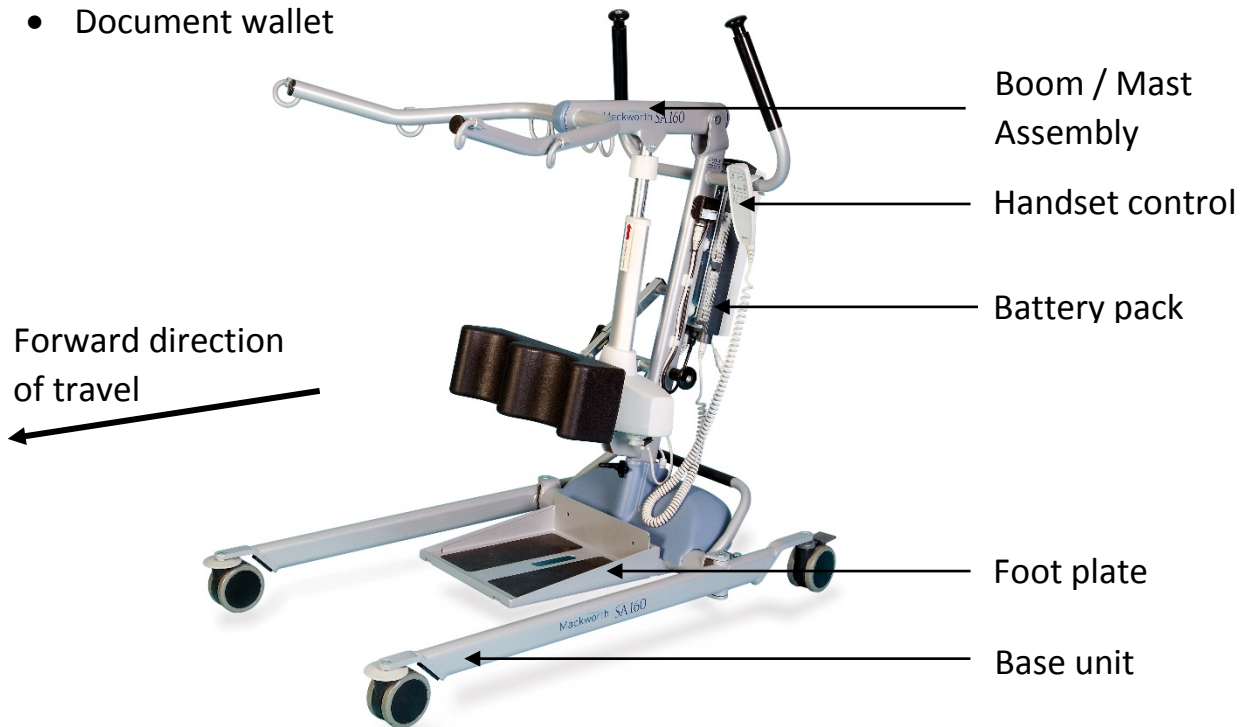
\* The numerical number in the product code relates to the SWL limits.

## 4. Assembly instructions

### Contents:

Remove carefully from the box:

- Boom / Mast assembly
- Base unit with legs attached (Base Unit)
- Battery pack / charging lead
- Hand set control
- Foot Plate
- Document wallet



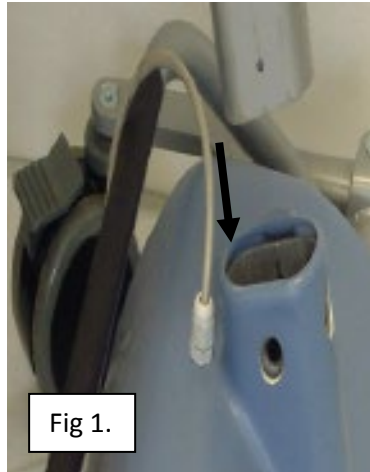
**SAFETY NOTE:** Some of the parts are heavy and will need to be lifted with care. Heavier items may need two people. (Please refer to technical specifications on page 21)

1. Place base unit on level floor surface and lock rear castors.
2. Remove boom/mast assembly from packaging.
3. Carefully take the boom/mast assembly and slide bottom of the mast into the base socket as shown in photos on page 7. When the mast is fully engaged into the base, locate the mast locking knob and side securing knob and tighten by hand firmly.

4. Ensure that the mast is fully down and fully engaged\*



**CAUTION:** Possible finger trap. Keep fingers away from end of mast when fitting to base unit



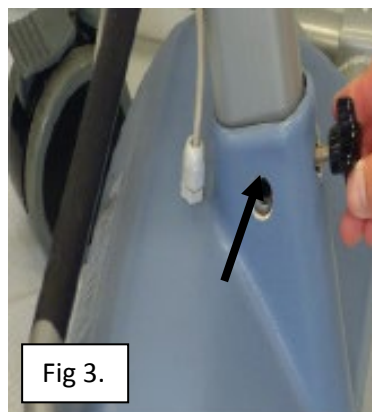
The image opposite (fig 1.) shows the device before the mast has been assembled into the base.



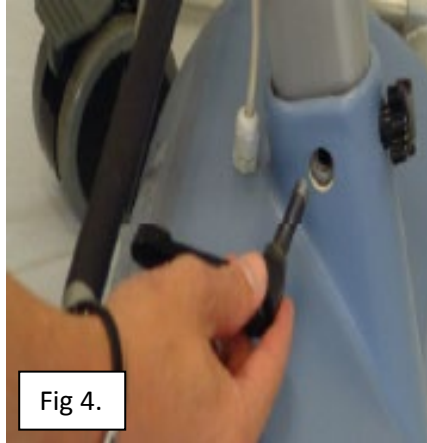
Take note of the caution above



The image opposite (fig 2.) shows the installed mast into the base of the device



The mast locking knob is installed, locking the mast to the base, as shown in fig 3.



The location of the side securing handle is shown in the image opposite (fig 4.) Screw this in hand tight



Shown in the image (fig 5.) is the fully installed mast to the base of the device.

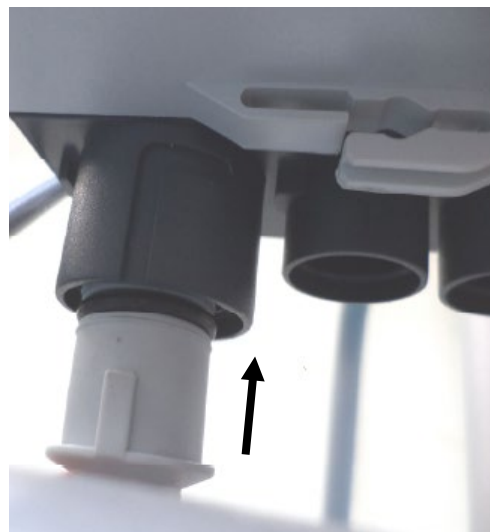
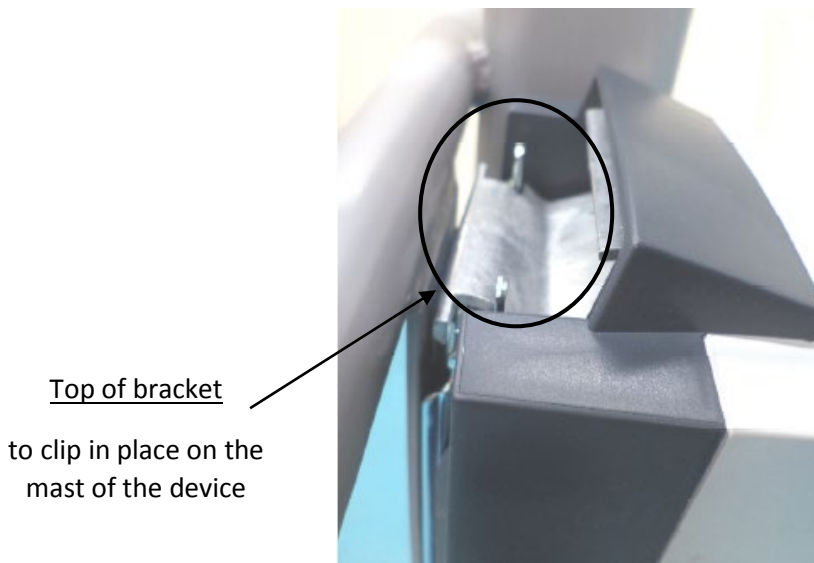
5. The control unit is already fitted to the mast, so assembly is not required. Check the emergency stop button (red button) located on the control box is in the out position (i.e. out)

Emergency stop button should be in the 'OUT' position





6. Fit the battery pack to the control box making sure it clicks into position in the top of the bracket, as shown.



Insert the jack plug for the leg spreading mechanism into the base of the control box (Socket L2) and push the cable into the retaining clips on the mast  
Fit the hand control unit to the hand control socket located on the base of the control unit.

**NOTE:** The hand control lead can only be fitted in one orientation into its socket. Do not use force to insert the hand control into its socket. The plug when correctly inserted should be pushed firmly home.

**The stand aid is now ready for use  
Please read the operating instructions carefully (see page 10)**

## 5. Stand aid features

### 5.1 Emergency Stop Button

During all operations and at all times, the stop button should be in the out position.

In the unlikely event of a failure of the handset control, it is possible that the electric actuator either continues to lift or continues to lower. This may be overridden by pressing the Emergency stop button to stop the actuator. To re-set the button after it has been pressed, simply twist it slightly clockwise and the button will spring outwards.



Emergency stop button



The stand aid will not operate with the emergency stop button pushed in.

### 5.2 Emergency Lowering

**Manual** emergency lowering is facilitated by turning the emergency lowering ring clockwise. The ring is situated at the top of the actuator where the actuator connects to the mast.



### 5.3 Emergency Lowering / raising

**Electrical** emergency lowering is facilitated by pressing the emergency UP or DOWN arrow button on the front of the control box. Battery **MUST** be charged in order to operate via these buttons.

Note: A thin item like a ball point pen will be required to press these buttons as they are recessed in the case as in (fig 6.)



- a. Emergency raise button
- b. Emergency lower button

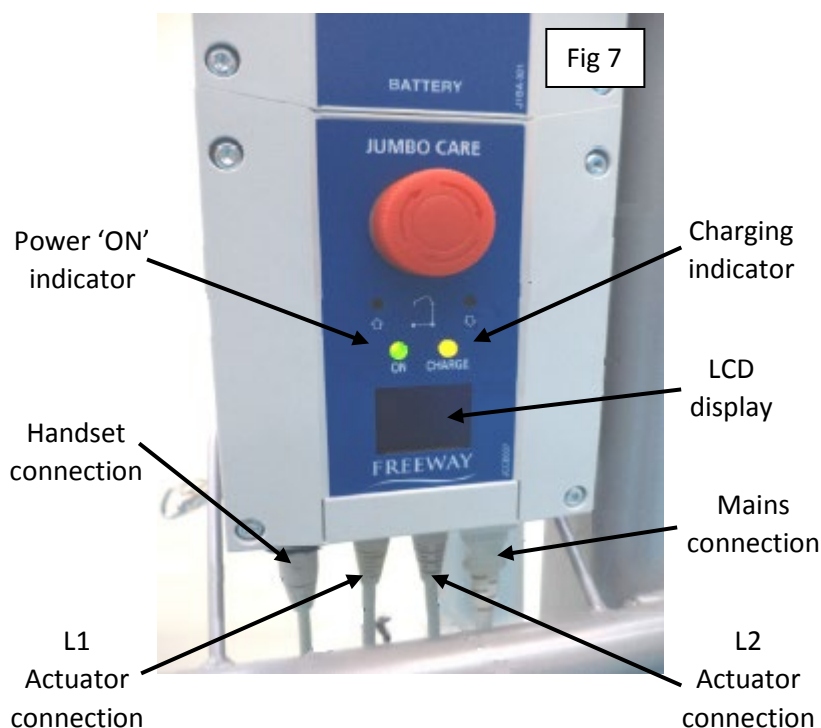


## 6. Control Box

The control box has been specially developed for patient lifting devices and the complete system is medically approved and contains a series of features that meet the patients' needs for a safe and comfortable transfer e.g. soft start function for raising and lowering.

The control box has a built in charging system and so removes the issues of lost or damaged chargers. To recharge the batteries, the hoist is connected to the mains via a mains lead that is made from a curly flex to give a greater length of cable without the need for trailing cables on the floor. See section 'Recharging the batteries' page 16 and 17

The actuators for the raising / lowering and the leg spreading are connected using jack plugs into the bottom of the control box.

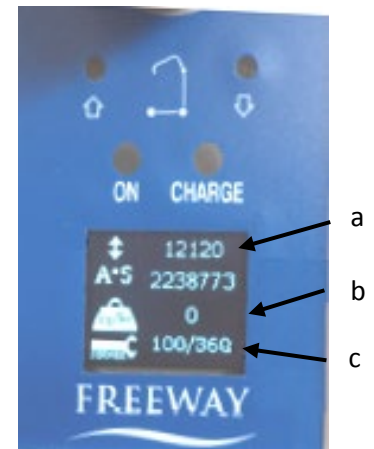


## 6.1. LCD Display

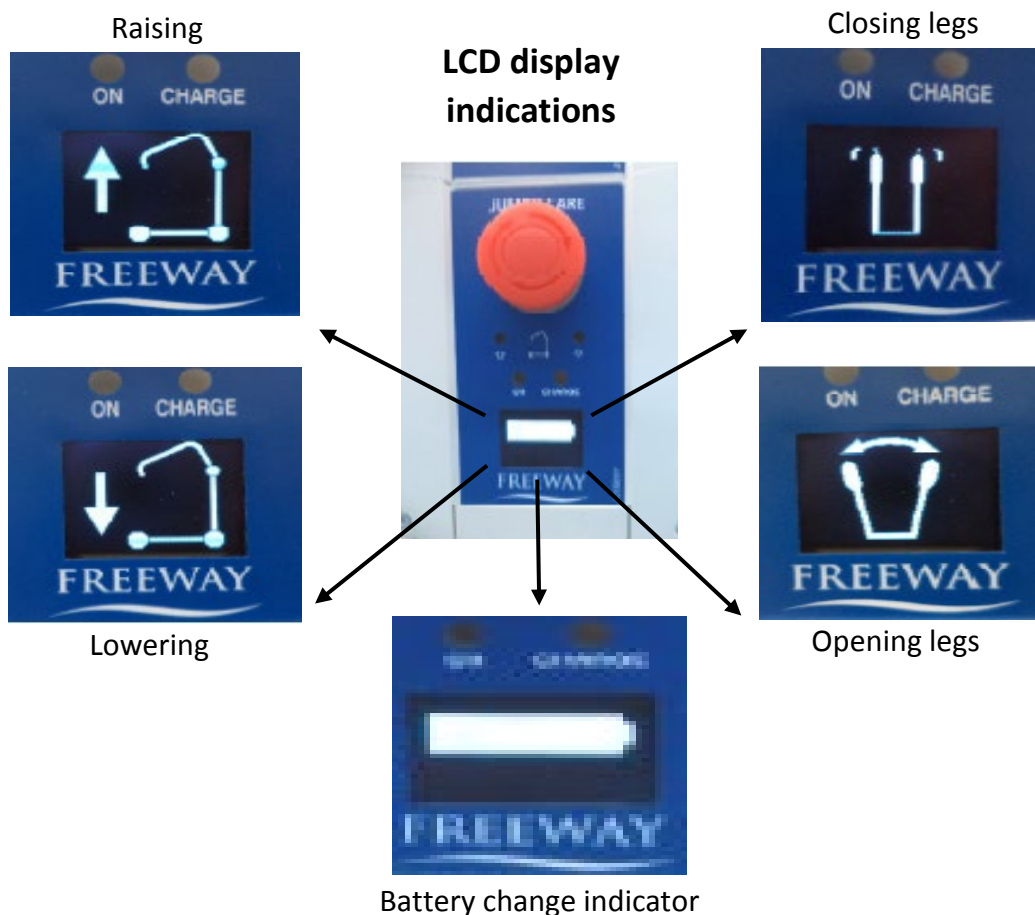
The LCD display has a range of options available and can be viewed during the operation of the hoist. By pressing the “UP” button on the handset the LCD display indicates the following:

- How many lifts the hoist has completed
- How many times the stand aid has been overloaded
- Service interval.

When the hoist is being used the LCD will also display the function i.e., raising, lowering, opening &/or closing the legs and battery charge level. See images below. See page 16 to 17 11 for recharging the batteries.



- a. Number of lifts
- b. Number of overloads
- c. Service interval



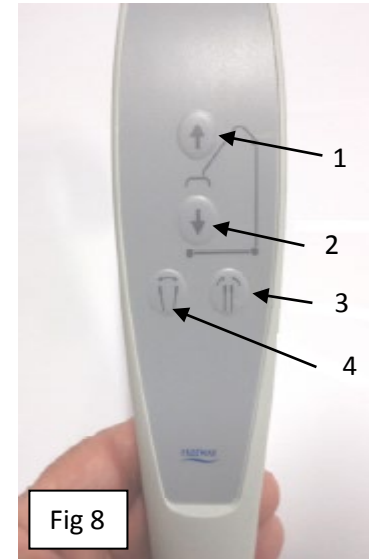
## 7. Handset

The SA350 Stand Aid benefits from the latest technology available for use in patient lifting devices. The handset operates 4 functions on the Stand Aid. They are:

1. Raises the Boom
2. Lowers the Boom
3. Opens the legs on the base unit
4. Closes the legs on the base unit

The handset is attached to the control box via a 'curly' flexible cable that is secured in place with a bayonet type fitting. The 'curly' flex is designed to give the greatest number of options for carer positioning without having a trailing cable around the patient.

The back of the handset has a hook that enables the user to position the handset anywhere on the boom whilst attending to the patient. Clear and easy to understand button diagrams enable ease of use for the caregiver.



## 8. Electrical Charging lead on Mobile Hoists

To recharge the battery pack, the SA350 mobile hoists are supplied with an Internal charger unit (within the control box) See page 16 to 17, recharging the batteries.

## 9. Foot bar

The SA350 has a foot bar situated at the rear of the base unit to help facilitate the clearing of door thresholds and to help raise the front end when loading the hoist into a vehicle for transport. The bar also protects the casing under which the motor is situated that operates the leg opening mechanism. The bar has a non-slip surface to maintain grip whilst being used.



These two images show the foot bar in use



The bar can also be used to aid the movement of the Stand Aid on difficult surfaces where the Stand Aid doesn't move freely. It can also be used to help tip the Stand Aid over thresholds or help to load it into vehicles.

## 10. Operating instructions

### Before use

You should familiarise yourself with use of the Stand Aid the procedure for opening / closing the leg sections and raising and lowering the Stand Aid, including emergency stop/lower and raise functions. Appropriate training in lifting and handling procedures should be undergone by any person operating a Stand Aid or sling, for their own and the client's safety and comfort. These instructions are designed to cover the method of using of the Freeway Stand Aid.

#### 10.1 To Alter the Leg Width

The legs on the base unit of the Freeway Stand Aid are electrically operated. The leg positioned is adjusted by pressing the appropriate button on the handset. Stand Aid manoeuvres can be completed with the legs in any position.

#### 10.2 Positioning

- a. Fit the person to be lifted with a suitable sling. Instruction should be taken in the fitting of slings to ensure maximum safety and comfort. A full assessment should be carried out by a qualified person and carers should be trained in the correct use. (See section 14)
- b. Select the leg position required. Position the Stand Aid near to person to be lifted. Assuming you are lifting on a level surface do not use the brakes on the Stand Aid (A documented risk assessment may advise to use the brakes). This allows the Stand Aid to align its self before operation. Ensure ALL sling loops are attached over the safety hooks on the spreader bar.



**NOTE** It is recommended to only use the brakes when carrying out lifts on / off the floor, following a risk assessment or when the Stand Aid is not in use & on charge.

#### 10.3 Raising & Lowering

- a. To raise a person, press handset button marked with upward facing arrow, see (fig.8, on page 13). When the sling straps become taut before the lift is commenced, check the straps are secure in position over the hooks of the carry bar before continuing the lift. When the desired height has been reached, release button and the Stand Aid will stop.
- b. When moving a person use the mast push handle and walk with the Stand Aid **NEVER** pull or twist at arm's length as this can cause injury to the carer.
- c. To a lower person, press and hold handset button marked with downward facing arrow and Stand Aid will descend. When you have reached desired level, simply release button and Stand Aid will stop in that position.

User Note:

The control boxes utilised within the devices use internal relay switches for actuator operation.

Pressing a hand controller button energises this control box relay with a small magnetic field, causing it to close. Releasing the hand controller button de-energises the control box relay, causing it to open.

Immediately “re-pressing” the relevant control button before the relay’s magnetic field has had time to reset will result in no additional activation.

This is not a fault of the system and no damage is caused by this process. If this situation occurs, please release the control button for two seconds and then press again. By this time the magnetic field will have dissipated and the operation of the button will re-energise the switch enabling further use.

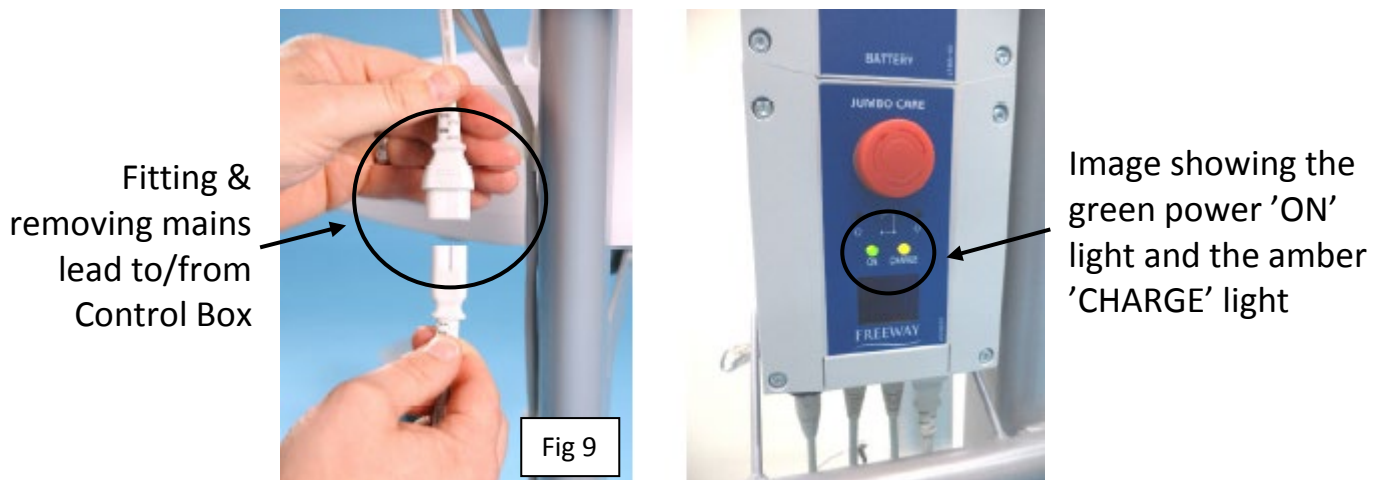


## 11. Batteries:

### Re-Charging the Batteries

An audible warning will sound when the batteries need charging and a visual LCD at the bottom of the control box will display empty. A fully charged hoist will display a full battery. Do not continue to use the Stand Aid beyond the lifting operation in progress at the time the warning first sounds.

The batteries are located within the power pack. They are charged through a socket connected to the base of the control unit. When charging is required, the mains lead is plugged into a wall socket outlet and the other end into the link lead.



**NOTE:** The emergency Stop Button must be in 'OUT' position when charging

- Fit the mains power lead to the small figure of eight shaped charging link lead that is fitted into the socket in the base of the control unit
- Plug the charger main plug into a suitable mains outlet and switch the mains supply ON
- The 'ON' light on the control box will be green to show that the power is reaching the control box. The 'Charge' light will illuminate amber initially to show that the batteries are receiving a charge.
- The amber light will go out once the batteries are fully charged. Charging is automatic and will fully charge the batteries over a period of eight to twelve hours

Batteries (continued...)

NOTE: Batteries should be kept on charge when the Stand Aid is not in general use. This ensures ready availability of the Stand Aid and prolongs battery life.

The internal charger in the control box will not allow the batteries to 'overcharge'. In accordance with battery manufacturers recommendations, all batteries should be fully charged for twenty-four hours every four months if in storage or not in regular use.



DO NOT use the Stand Aid when the mains lead is connected to the wall socket



DO NOT expose the battery or control box to water

Before using the stand aid, switch OFF the mains supply and remove the plug from the socket outlet. The charger lead can either be removed from the control box and stored separately or left in situ on the unit with the mains plug resting on the plug bracket (fig.7 & fig.9 applies)



When the hoist is not in use, store away, ensure the emergency stop is depressed to prevent any unintended use by unauthorised persons



Always dispose of batteries in a responsible manner – please observe the local regulations when disposing of a battery

## 12. Safety precautions



Please read and follow the safety precautions listed below. The operation and the use of the Mackworth SA350 Stand Aid is straightforward. These basic safety precautions will help make lifting operations easy and trouble free.

### Always

- ALWAYS conduct a risk assessment to plan your lifting operations before use.
- ALWAYS carry out the DAILY CHECK LIST (page 20) before using the Stand Aid.
- ALWAYS read this manual and familiarise yourself with the operating control and safety features of the Stand Aid before lifting a patient.
- ALWAYS check the sling is suitable for the particular patient and is of the correct size and capacity.
- ALWAYS fit the sling according to the instructions in the user manual.
- ALWAYS check that the safe working load of the Stand Aid is suitable for the weight of the patient.
- ALWAYS carry out lifting according to the instructions in the sling user manual.
- ALWAYS manoeuvre the Stand Aid with the handle provided.
- ALWAYS lower the patient to the lowest comfortable position before transfers.
- ALWAYS apply the brakes when parking a Stand Aid.

### Never

- NEVER use a sling unless it is recommended for use with the Stand Aid.
- NEVER attempt to manoeuvre the Stand Aid by pushing on the mast, boom or patient.
- NEVER push a loaded lift at speeds which exceed a slow walking pace.
- NEVER push the Stand Aid over uneven or rough ground, particularly if loaded.
- NEVER attempt to push or pull a loaded Stand Aid over a floor obstruction which the castors are unable to ride over easily.
- NEVER bump the Stand Aid down steps, loaded or unloaded, this will damage the castors.
- NEVER attempt to negotiate a loaded Stand Aid on a slope.
- NEVER use a sling which is frayed or damaged.
- NEVER disconnect or bypass a control or safety feature because it seems easier to operate the Stand Aid.

*Safety precautions (continued...)*

- NEVER force an operating or safety control. Forcing will only strain or damage the Stand Aid and may compromise safety.
- NEVER use Stand Aids in a shower.
- NEVER charge an electric Stand Aid in a bathroom or shower room.
- NEVER allow water to enter hand set or battery control box or use the Stand Aid outside in wet conditions.
- NEVER dispose of the battery pack in a fire as this may cause an explosion.
  
- YOUR Stand Aid is for patient lifting. DO NOT use it, or allow it to be used, for any other purpose than its intended use.

## 13. Safety check list

The following checks are those recommended by Prism Medical and are supplementary to requirements that may be applicable for current Lifting and Handling and other health and Safety regulations such as The Lifting Operations and Lifting Equipment Regulations 1998 which may have additional requirements to those set out below

### 13.1 Daily Check List:

The following checks should be carried out daily before using the Stand Aid:

- Make sure the Stand Aid moves freely on its castors
- Make sure that leg opening and closing is functioning correctly
- Check the spreader bar for free movement in all directions and that it is securely attached to the boom
- Examine the sling hooks on the boom for excessive wear
- Raise and lower the Stand Aid by operating the handset if the Stand Aid makes a bleeping sound DO NOT USE as it needs to be charged
- Ensure the Stand Aid is off charge before use and all leads are fully engaged into their sockets
- Make sure the mast is fully engaged and the locking nuts are fully tightened
- Examine slings for fraying or other damage. DO NOT use sling with fraying or damage to the suspension straps or tears in the body of the sling

### 13.2 Warning Notes



Your Mackworth SA350 Stand Aid has been manufactured and tested to exceed BS EN 10535:2006. This does not mean that it can be used without care. ALL OPERATORS should have read the operating instructions and appreciate this warning section.

1. ALL STAND AIDS are less stable on sloping surfaces. A 5-degree slope is the maximum permitted and then only with great care.
2. ALL STAND AIDS are less stable when the load is at maximum height.
3. ALL STAND AIDS are less stable when the load is swinging.
4. ALL STAND AIDS are dangerous to the person being carried when used recklessly or pushed at speed.

## 14. Technical Specification

### 14.1 Dimensions & Weights

<b>Model Specification</b>	<b>SA350</b>
Maximum weight capacity	160 kg
Lifting range	650 mm to 1645 mm
Stand aid footprint (LxW)	1100 mm to 640 mm
Turning radius	1200 mm
Legs open – External width	1120 mm
Legs open – Internal width	1020 mm
Legs closed – External width	720 mm
Legs closed – Internal width	620 mm
Overall height of legs (top of legs to floor)	123 mm
Ground clearance (underside of legs to floor)	50 mm
Front twin castors (diameter)	100 mm
Rear twin castors (diameter)	100 mm
<b>Weights</b>	
Assembled SA-160	50.6 kg
Mast & Boom (including all fittings)	23.7 kg
Base assembly	23.9 kg
Battery	3 kg
<b>Sound Levels (measured in dB A)</b>	
Unloaded	43.5 dB A
Loaded	43.5 dB A

### 14.2 Electrical specifications

- Batteries – 2 x 12-volt rechargeable sealed lead acid
- Battery capacity – 2.9 ampere hours
- Charger Input - 230V ac 50/60Hz
- Charger Output – 27.4/29.0V dc @ 0.8A

#### Electric shock protection

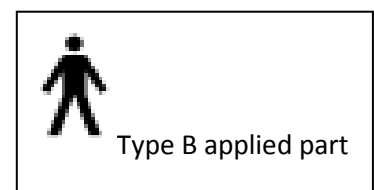
- Charger Class - 11
- Stand Aid - Internal Power Source

#### Degree of Shock protection

- Charger - Type B
- Stand Aid - Type B

#### IP Rating

- Control box - IPX4
- Handset - IPX4



The policy of Prism Medical UK is one of continual improvement and we reserve the right to modify designs without notice.

Normal Operating Conditions:

Temperature: +10 to +70 °C

Relative Humidity: 30 to 75% RH

Atmospheric Pressure: 700 to 1060 hPa

Shipping/Storage Conditions:

Temperature: -40 to +70 °C

Relative Humidity: 10 to 100% RH

Atmospheric Pressure: 500 to 1060 hPa

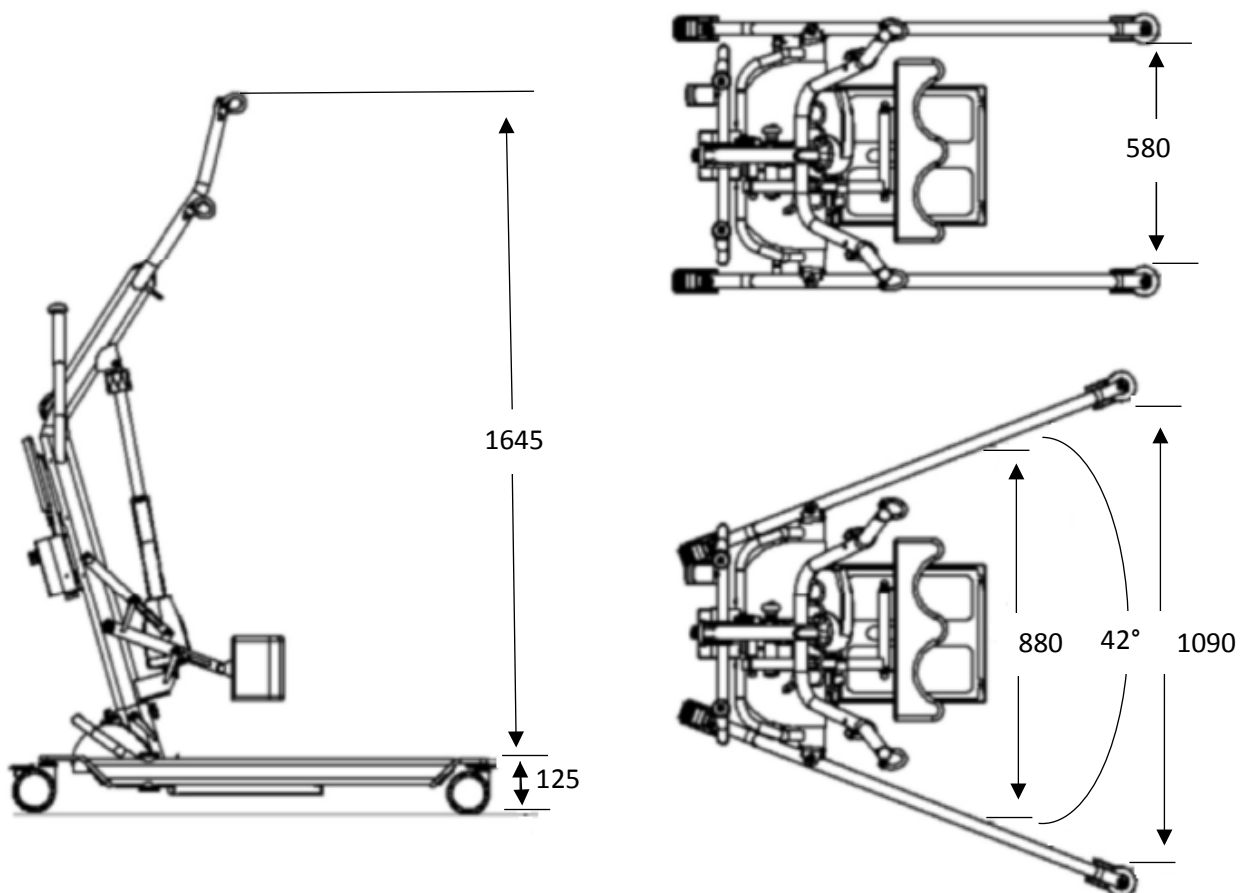
14.3 Maximum lifting Height & leg width

(dimensions in mm and weights in kg.)

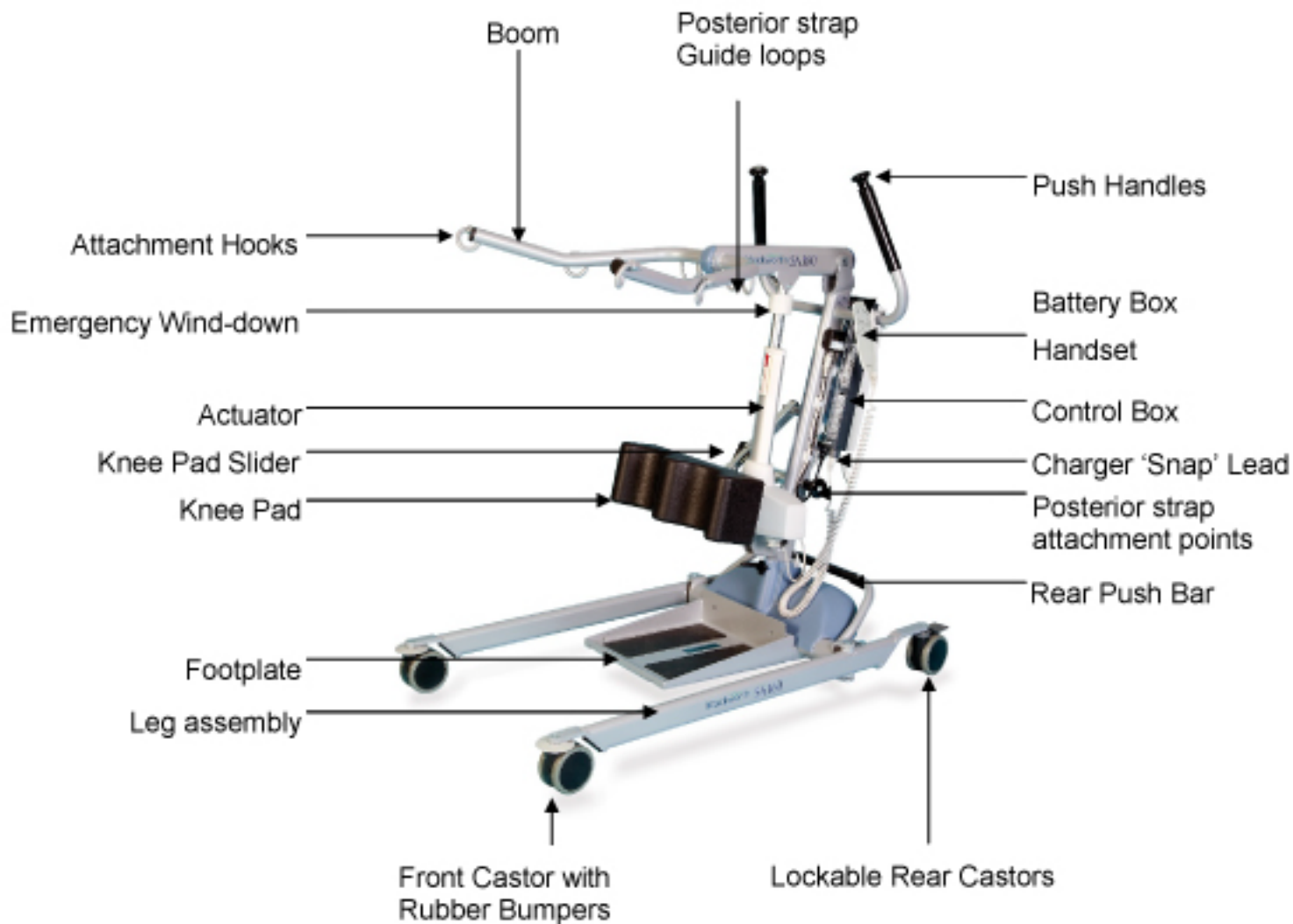
14.4 EMC – Electromagnetic emissions statement

The device complies with the requirements of BS EN ISO 60601-1-2 – (Medical electrical equipment. General requirements for basic safety and essential performance. Collateral Standard. Electromagnetic disturbances. Requirements and tests)

Should the device come into contact with a similar device having the requirements to meet EMC performance, the reciprocal interference would be eliminated.



## 14.5 SA350 Main assembly components list





## 14.6 Standing support and posterior sling accessory

### 14.6.1 - Application

The Standing Support and Posterior Sling is designed to be used from a sitting position in conjunction with the Freeway Stand Aid.

- **Standing Support Sling**  
The sling supports the person in facilitating the sit to stand manoeuvre and should only be used on a person that has control over their trunk muscles and that has the ability to weight bear.
- **Posterior Sling**  
The posterior sling is used in conjunction with the standing support sling. It helps support the hips in the sit to stand manoeuvre.

### 14.6.2 - Sling Inspection

All Prism slings are manufactured to meet and exceed the requirements of BS EN 10535:2006 'Hoists for the transfer of disabled persons– Requirements and test methods'. Slings should be inspected prior to use and after washing. Damaged or badly worn slings should be discarded. The label on the sling contains vital information to identify the sling—if any part of the label becomes illegible, then it must be removed from service and replaced.

The sling should be visually inspected with regard to the following items:

- Any signs of damage (i.e. Cuts, frays, tears, burns) to the sling straps
- Any signs of stitching becoming undone on any part of the sling
- Any signs of the fabric being stretched, tearing or undue wear
- Any signs of discolouring or bleaching on the material
- Is the sling complete? i.e. all straps present, stiffeners in place – where applicable, etc
- Label clearly legible

### 14.6.3 Compatibility

The issue of sling compatibility with various manufacturers' stand aids have been a concern for specifiers for a number of years, an issue that is compounded by the increased number of companies supplying Stand Aids and slings. Some stand aid/sling manufacturers will state that only slings manufactured by them can be used on their hoists and vice versa. This is their policy only and is NOT a legal requirement. A risk assessment must still be completed even if the same manufacturer of the stand aid and sling are to be used, and the specifier simply has to state that the boom connection point is of a similar design and that the sling manufacturer has authorised its use on it.

A comprehensive list is available separately and your local agent will be able to provide assistance with compatibility issues.

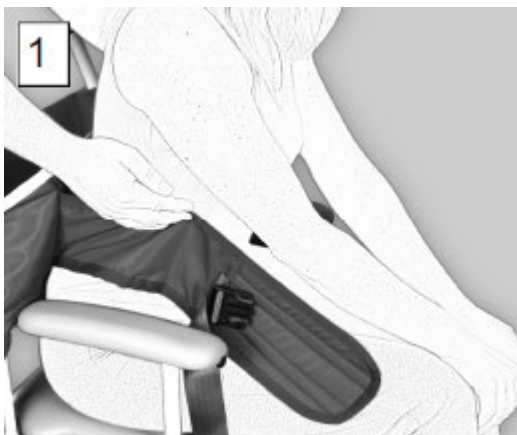
### 14.6.4 Maximum Load (Safe Working Load - SWL)

The maximum load for the sling is clearly marked on the label of the sling. The maximum load will also be displayed on the hoist and any detachable elements of the hoisting system.

## 14.7 How to fit the standing support sling

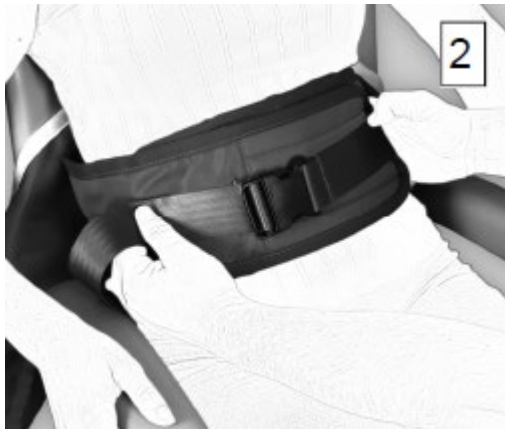
Note: The person to be transferred shall be referred to as "the person"

Ensure the label and grab handles are facing away from the person before commencing the fitting procedure below.



Place the sling down the back to a position just beneath the shoulder blades and above the belt line. If the sling cannot be introduced from behind, apply the sling in a position level with the person.

*How to fit the standing support sling (continued...)*



Bring the two sections of the chest strap around the person's chest and fasten securely using the hook & loop and buckle fastening. Note: the chest strap is purely intended for the security of the person and is not weight bearing.



Place the person's feet on to the foot plate and adjust the knee pad (the knee pad should be positioned at the top of the shin avoiding the knee joint) the two straps should now be attached to the carry bar hooks. Raise the carry bar just enough to tension the straps and ensure that they are still securely attached. As the person is about to be lifted check the chest strap for tension and comfort. Re-adjust when required.



Alternatively, you can attach the sling to the lower sling hooks, this will facilitate an alternative standing procedure.

Important - always re-assess for client's co-operation and capability when using this sling.

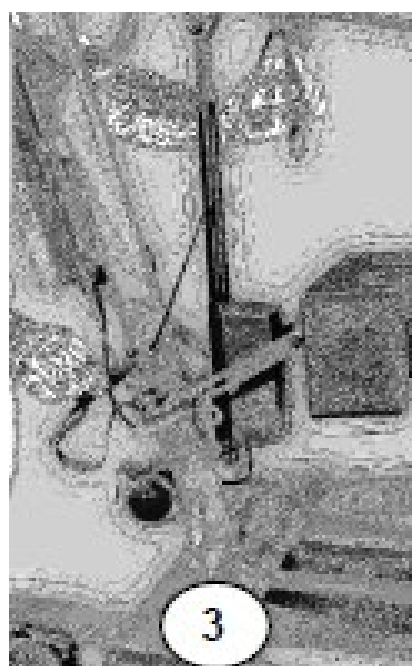
To remove the sling, carry out the fitting procedure in reverse.  
Important - always peel the sling away from the person to avoid skin friction and movement.

**Notes**

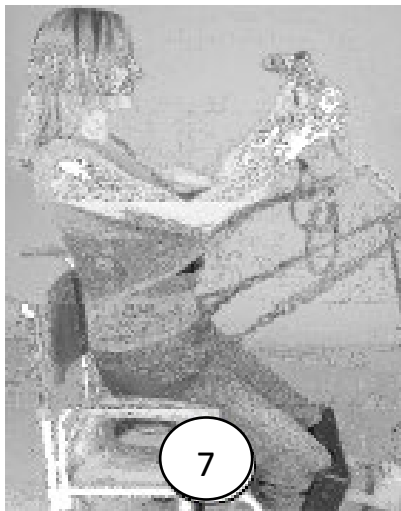
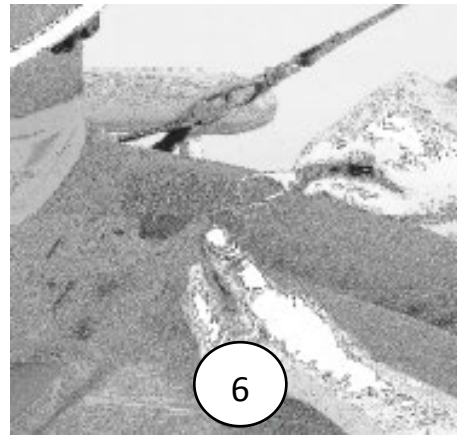
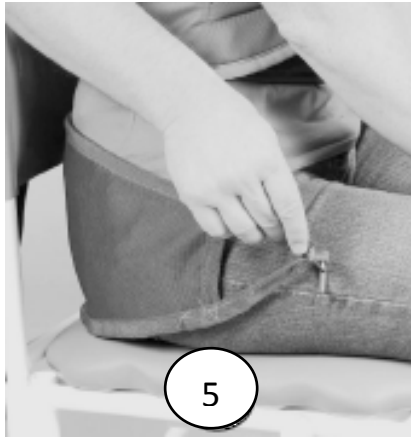
The above & following techniques are for guidance only and you must comply with your local policies. If in doubt, consult your moving and handling advisor.

### 14.7.1 Using the Posterior Sling in conjunction with the Standing Support Sling

The posterior straps must first be attached to the Mackworth SA350 by following the diagrams below:



1. Thread loop of posterior strap under lower bar.
2. Thread hook through the end of the loop and pull through to form attachment to lower bar.
3. Thread hook end of the strap to the inside of the top bar and thread through the metal loop on the boom of the SA350.
4. Adjust the length of the strap using the slider buckle to suit the individual.



5. Fit the Standing support strap as described on the previous page (Items 5 & 6) and then introduce the posterior sling level with the person's hips.
6. Attach the posterior sling to the posterior straps.
7. Introduce the Mackworth SA350 as described in the previous section (item 7). Raise the carry bar just enough to tension the straps and ensure that they are still securely attached and there are no twists in the posterior straps.

As you start the lifting procedure the posterior sling will support the majority of the lift, (If NOT adjust the chest sling straps or the posterior straps placed at the bottom near the hoist attachment bar as shown in item 4 above) as the standing continues the chest sling will gradually take over, once in standing the posterior sling will be relaxed to allow access to clothing.

Only use the Standing Support sling & Posterior sling with clients with the ability to stand. Do not fix the posterior straps to anything other than the "D" rings on the posterior

## 15. Fault Finding / Maintenance

If the hoist will not operate:

- Ensure the battery is charged and that it is attached correctly to the control box
- Ensure that the emergency stop button is in the OUT position
- Make sure the charging lead is disconnected from the mains power supply
- Check the handset lead has not been pulled from the control box socket or wires damaged.

If the above checks prove unsuccessful, contact the service department of your nearest Freeway approved agent

### 15.1 Service / Maintenance

Any works performed on the SA350 must be in accordance with the specifications detailed in the test requirements of BS 10535:2006. You should also consider if the hoist requires servicing in accordance with “LOLER REGULATIONS” (Lifting Operations and Lifting Equipment Regulations 1998).

## 16. Recommended cleaning instruction

### General cleaning

The exterior of the SA350 can be cleaned using a damp soapy cloth for general cleaning duties. **Please ensure the cloth is damp and not wet.** Ensure the exterior of the device is dry after cleaning, dry using a clean dry cloth.



**Care should always be taken when cleaning around electrical components**

### Disinfecting (if necessary)

Should the SA350 require a more thorough clean, the use of the Actichlor disinfectant product, which is widely available in tablet form and used throughout the healthcare industry, is recommended for use to ensure a thorough clean.



- Please follow the manufacturers safety instruction for the use of the cleaning product before use to ensure safe use for the operator and the patient.
- Ensure the cloth is **damp** before the cleaning process. **DO NOT** use a wet cloth over electrical systems.
- Be careful not to let water ingress into the device as although the device is IP rated, it is not water tight.

Application is through a clean soaked (but damp) cloth applied to wipe the device down

Used in the following dilutions to ensure an effective clean:

- Actichlor dissolvable chlorine tablets provide a concentration of 1000 ppm of available chlorine (0.1%) per 1 tablet
- 1 tablet (1.7g formed tablet (x1)) will create a virucidal solution, diluted in 1 litre of water to provide effective means to clean a “Dirty” device. This is also ideal for use after an outbreak of the Norovirus / winter vomiting and can be used as a precaution against C.Diff. It is effective against viruses, bacteria, spores, yeasts and moulds.
- The contact time against the outer components of the device should be for 5 minutes to prevent any virucidal infections without a degradation to the functionality of the device. 5 minutes is a recommended contact time. The device can withstand a longer contact period but the 5 minute recommendation as a minimum must be followed to provide an effective cleaning regime.
- Blood spills should be dealt with by an increased concentration of the solution – please refer to the instructions on the manufacturers product labelling.

(recommended cleaning instruction...continued)

Concentration limits for differing cleans will be shown on the manufacturers Aichtochlor tablet container, however, this is reflected in the table below:

<b>Dilution chart</b>					
<b>Product used as:</b>	<b>Device condition</b>	<b>Concentration (ppm)</b>	<b>Dilution qty *</b>	<b>Tablets per litre</b>	<b>Contact time</b>
Bactericidal	Clean	200	5 litre	1	1 minute
	Dirty	1000	1 litre	1	5 minutes
Yeasticidal	Clean	200	5 litre	1	1 minute
	Dirty	1000	1 litre	1	5 minutes
Fungicidal	Clean	2000	1 litre	2	15 minutes
	Dirty	5000	1 litre	5	15 minutes
Mycobactericidal	Clean	1000	1 litre	1	15 minutes
	Dirty	5000	1 litre	5	15 minutes
Virucidal	Clean	500	2 litre	1	5 minutes
	Dirty	1000	1 litre	1	5 minutes
Sporcidal (C.Diff)	Clean	1000	1 litre	1	10 minutes
Sporicidal	Clean	5000	1 litre	5	10 minutes

\* Dilution is made within water

- When diluted in water, one tablet gives 1000 ppm of available chlorine **DO NOT** dilute within any other medium
- The concentration of the solution depends upon whether the device being cleaned is noticeably dirty or not (indicated in the table by "Device Condition")

### Safety precautions when using this cleaning agent

#### **Handling and Storage:**

##### Advice on Safe Handling



Avoid contact with skin and eyes. Do not breathe dust / fumes / gas / mist / vapours / spray. Use only with adequate ventilation Wash hands thoroughly after handling. Mixing this product with acid or ammonia releases chlorine gas

##### Hygiene Measures

Handle in accordance with good industrial hygiene and safety practice. Remove and wash contaminated clothing before re-use. Wash face, hands and any exposed skin thoroughly after handling.



### Conditions for safe storage, including and incompatibilities



- Keep out of reach of children
- Keep container tightly closed
- Store in suitable labelled containers
- Storage temperature: 0°C to 25°C

### Individual protective measures:

- Hand protection: Gloves

### Dissolve

Dissolve in cold water – With no agitation, 1 tablet will take approx. 10 minutes to fully dissolve in the water used.

The information above has been extracted from the Actichlor MSDS (Manufacturers Safety Data Sheet). For a full review of the data please follow the link below:

<http://www.nhsggc.org.uk/media/236215/msds-actichlor-plus.pdf>

In all instances where the stand aid requires cleaning, disconnect the device from the mains power supply

## 17. Test certificate and Guarantee

### SA350 Mobile Hoist

#### TEST CERTIFICATE

**Model:** SA350

**Safe Working Load:** 160Kgs

**Serial No:** .....

**Date of Test:** .....

This Test Certificate confirms that the above numbered hoist has been fully tested in accordance with the tests specified in:

- BS EN 10535 and has conformed fully therewith.

**Signature of Tester** .....

This guarantee does not affect or in any way limit your Statutory Rights

1. Prism Medical UK guarantees the SA350, supplied as new, against failure within the period of twenty-four months from the date of purchase by virtue of defects in material or workmanship.
2. The liability of Prism Medical UK under terms of this guarantee shall be limited to the replacement or the defective part(s) to the sales distributor, dealer, agent, person or entity which purchased the equipment from Prism Medical UK. In no event shall Prism Medical UK incur liability for any consequential or unforeseeable losses.
3. This equipment guarantee shall be void if the equipment is not serviced by Prism Medical UK or its authorised agents, in accordance with manufacturers recommendations, or if any unauthorised persons carry out work on the equipment.
4. This guarantee does not apply to failure attributable to normal wear and tear, damage by natural forces, user neglect or misuse or to deliberate destruction.

Exemptions: Batteries will be guaranteed for a period of 90-days after original purchase.

## 18. Standards Applied

The standards that have been applied to the device are as follows:

- **BS EN 60601-1-2**  
*Medical electrical equipment. General requirements for basic safety and essential performance. Collateral Standard. Electromagnetic disturbances. Requirements and tests*
- **BS EN 60601-1**  
*Medical electrical equipment. General requirements for basic safety and essential performance*
- **BS EN ISO 10535**  
*Hoists for the transfer of disabled persons. Requirements and test methods*

## 19. Service Record History

### 19.1 Initial Information

Complete the following section on Purchase and Service Information as soon as this equipment is purchased.

- Use the service record history to record to any completed service and repairs.
- Ensure that the service record is signed and dated each time it is used.
- Be sure to have this piece of equipment serviced on a regular basis as described in the General Inspection and Maintenance Section.
- Be sure to have this piece of equipment serviced on a regular basis (6 monthly where LOLER applies).

#### Purchase Information

**Product name:** SA350 Stand Aid **Model:** .....

**Date of purchase:** ..... **Serial No.:** .....

**Purchased from:** .....

**Address:** .....

**City:** ..... **Postal code:** .....

**Telephone number:** .....

**Comments:**

#### Contact the following company for service

**Company:** .....

**Address:** .....

**City:** ..... **Postal code:** .....

**Telephone number:** .....

**Comments:**

## 19.2 Service Record History

Complete this section after each service, repair inspection and/or maintenance.

\* Photocopy additional pages as required\*

Date: _____		Time: _____			
Service Type: <input type="checkbox"/> Periodic inspection <input type="checkbox"/> Monthly inspection <input type="checkbox"/> 6-month inspection <input type="checkbox"/> Repair <input type="checkbox"/> Yearly inspection <input type="checkbox"/> Other					
Completed by: .....		(printed name). .....		(signature)	
Company: .....					
Remarks & Action Taken:					
Device left in a safe usable condition: YES. <input type="checkbox"/> NO <input type="checkbox"/> (if "NO" explain in remarks the action taken)					

Date: _____		Time: _____			
Service Type: <input type="checkbox"/> Periodic inspection <input type="checkbox"/> Monthly inspection <input type="checkbox"/> 6-month inspection <input type="checkbox"/> Repair <input type="checkbox"/> Yearly inspection <input type="checkbox"/> Other					
Completed by: .....		(printed name). .....		(signature)	
Company: .....					
Remarks & Action Taken:					
Device left in a safe usable condition: YES. <input type="checkbox"/> NO <input type="checkbox"/> (if "NO" explain in remarks the action taken)					

Date: _____		Time: _____			
Service Type: <input type="checkbox"/> Periodic inspection <input type="checkbox"/> Monthly inspection <input type="checkbox"/> 6-month inspection <input type="checkbox"/> Repair <input type="checkbox"/> Yearly inspection <input type="checkbox"/> Other					
Completed by: .....		(printed name). .....		(signature)	
Company: .....					
Remarks & Action Taken:					
Device left in a safe usable condition: YES. <input type="checkbox"/> NO <input type="checkbox"/> (if "NO" explain in remarks the action taken)					

Date: _____		Time: _____	
Service Type: <input type="checkbox"/> Periodic inspection <input type="checkbox"/> Monthly inspection <input type="checkbox"/> 6-month inspection <input type="checkbox"/> Repair <input type="checkbox"/> Yearly inspection <input type="checkbox"/> Other			
Completed by: ..... (printed name).		..... (signature)	
Company: .....			
Remarks & Action Taken:			
Device left in a safe usable condition: YES. <input type="checkbox"/> NO <input type="checkbox"/> (if "NO" explain in remarks the action taken)			

Date: _____		Time: _____	
Service Type: <input type="checkbox"/> Periodic inspection <input type="checkbox"/> Monthly inspection <input type="checkbox"/> 6-month inspection <input type="checkbox"/> Repair <input type="checkbox"/> Yearly inspection <input type="checkbox"/> Other			
Completed by: ..... (printed name).		..... (signature)	
Company: .....			
Remarks & Action Taken:			
Device left in a safe usable condition: YES. <input type="checkbox"/> NO <input type="checkbox"/> (if "NO" explain in remarks the action taken)			

Date: _____		Time: _____	
Service Type: <input type="checkbox"/> Periodic inspection <input type="checkbox"/> Monthly inspection <input type="checkbox"/> 6-month inspection <input type="checkbox"/> Repair <input type="checkbox"/> Yearly inspection <input type="checkbox"/> Other			
Completed by: ..... (printed name).		..... (signature)	
Company: .....			
Remarks & Action Taken:			
Device left in a safe usable condition: YES. <input type="checkbox"/> NO <input type="checkbox"/> (if "NO" explain in remarks the action taken)			

Date: _____		Time: _____	
Service Type: <input type="checkbox"/> Periodic inspection <input type="checkbox"/> Monthly inspection <input type="checkbox"/> 6-month inspection <input type="checkbox"/> Repair <input type="checkbox"/> Yearly inspection <input type="checkbox"/> Other			
Completed by: ..... (printed name).		..... (signature)	
Company: .....			
Remarks & Action Taken:			
Device left in a safe usable condition: YES. <input type="checkbox"/> NO <input type="checkbox"/> (if "NO" explain in remarks the action taken)			

Date: _____		Time: _____	
Service Type: <input type="checkbox"/> Periodic inspection <input type="checkbox"/> Monthly inspection <input type="checkbox"/> 6-month inspection <input type="checkbox"/> Repair <input type="checkbox"/> Yearly inspection <input type="checkbox"/> Other			
Completed by: .....		..... (signature)	
Company: .....			
Remarks & Action Taken:			
Device left in a safe usable condition: YES. <input type="checkbox"/> NO <input type="checkbox"/> (if "NO" explain in remarks the action taken)			

Date: _____		Time: _____	
Service Type: <input type="checkbox"/> Periodic inspection <input type="checkbox"/> Monthly inspection <input type="checkbox"/> 6-month inspection <input type="checkbox"/> Repair <input type="checkbox"/> Yearly inspection <input type="checkbox"/> Other			
Completed by: .....		..... (signature)	
Company: .....			
Remarks & Action Taken:			
Device left in a safe usable condition: YES. <input type="checkbox"/> NO <input type="checkbox"/> (if "NO" explain in remarks the action taken)			

Date: _____		Time: _____	
Service Type: <input type="checkbox"/> Periodic inspection <input type="checkbox"/> Monthly inspection <input type="checkbox"/> 6-month inspection <input type="checkbox"/> Repair <input type="checkbox"/> Yearly inspection <input type="checkbox"/> Other			
Completed by: .....		..... (signature)	
Company: .....			
Remarks & Action Taken:			
Device left in a safe usable condition: YES. <input type="checkbox"/> NO <input type="checkbox"/> (if "NO" explain in remarks the action taken)			

Date: _____		Time: _____	
Service Type: <input type="checkbox"/> Periodic inspection <input type="checkbox"/> Monthly inspection <input type="checkbox"/> 6-month inspection <input type="checkbox"/> Repair <input type="checkbox"/> Yearly inspection <input type="checkbox"/> Other			
Completed by: .....		..... (signature)	
Company: .....			
Remarks & Action Taken:			
Device left in a safe usable condition: YES. <input type="checkbox"/> NO <input type="checkbox"/> (if "NO" explain in remarks the action taken)			

Date: _____		Time: _____	
Service Type: <input type="checkbox"/> Periodic inspection <input type="checkbox"/> Monthly inspection <input type="checkbox"/> 6-month inspection <input type="checkbox"/> Repair <input type="checkbox"/> Yearly inspection <input type="checkbox"/> Other			
Completed by: .....		(printed name). .... (signature)	
Company: .....			
Remarks & Action Taken:			
Device left in a safe usable condition: YES. <input type="checkbox"/> NO <input type="checkbox"/> (if "NO" explain in remarks the action taken)			

Date: _____		Time: _____	
Service Type: <input type="checkbox"/> Periodic inspection <input type="checkbox"/> Monthly inspection <input type="checkbox"/> 6-month inspection <input type="checkbox"/> Repair <input type="checkbox"/> Yearly inspection <input type="checkbox"/> Other			
Completed by: .....		(printed name). .... (signature)	
Company: .....			
Remarks & Action Taken:			
Device left in a safe usable condition: YES. <input type="checkbox"/> NO <input type="checkbox"/> (if "NO" explain in remarks the action taken)			

Date: _____		Time: _____	
Service Type: <input type="checkbox"/> Periodic inspection <input type="checkbox"/> Monthly inspection <input type="checkbox"/> 6-month inspection <input type="checkbox"/> Repair <input type="checkbox"/> Yearly inspection <input type="checkbox"/> Other			
Completed by: .....		(printed name). .... (signature)	
Company: .....			
Remarks & Action Taken:			
Device left in a safe usable condition: YES. <input type="checkbox"/> NO <input type="checkbox"/> (if "NO" explain in remarks the action taken)			

Date: _____		Time: _____	
Service Type: <input type="checkbox"/> Periodic inspection <input type="checkbox"/> Monthly inspection <input type="checkbox"/> 6-month inspection <input type="checkbox"/> Repair <input type="checkbox"/> Yearly inspection <input type="checkbox"/> Other			
Completed by: .....		(printed name). .... (signature)	
Company: .....			
Remarks & Action Taken:			
Device left in a safe usable condition: YES. <input type="checkbox"/> NO <input type="checkbox"/> (if "NO" explain in remarks the action taken)			



Date: _____		Time: _____	
Service Type: <input type="checkbox"/> Periodic inspection <input type="checkbox"/> Monthly inspection <input type="checkbox"/> 6-month inspection <input type="checkbox"/> Repair <input type="checkbox"/> Yearly inspection <input type="checkbox"/> Other			
Completed by: ..... (printed name).		..... (signature)	
Company: .....			
Remarks & Action Taken:			
Device left in a safe usable condition: YES. <input type="checkbox"/> NO <input type="checkbox"/> (if "NO" explain in remarks the action taken)			

Date: _____		Time: _____	
Service Type: <input type="checkbox"/> Periodic inspection <input type="checkbox"/> Monthly inspection <input type="checkbox"/> 6-month inspection <input type="checkbox"/> Repair <input type="checkbox"/> Yearly inspection <input type="checkbox"/> Other			
Completed by: ..... (printed name).		..... (signature)	
Company: .....			
Remarks & Action Taken:			
Device left in a safe usable condition: YES. <input type="checkbox"/> NO <input type="checkbox"/> (if "NO" explain in remarks the action taken)			

Date: _____		Time: _____	
Service Type: <input type="checkbox"/> Periodic inspection <input type="checkbox"/> Monthly inspection <input type="checkbox"/> 6-month inspection <input type="checkbox"/> Repair <input type="checkbox"/> Yearly inspection <input type="checkbox"/> Other			
Completed by: ..... (printed name).		..... (signature)	
Company: .....			
Remarks & Action Taken:			
Device left in a safe usable condition: YES. <input type="checkbox"/> NO <input type="checkbox"/> (if "NO" explain in remarks the action taken)			

Date: _____		Time: _____	
Service Type: <input type="checkbox"/> Periodic inspection <input type="checkbox"/> Monthly inspection <input type="checkbox"/> 6-month inspection <input type="checkbox"/> Repair <input type="checkbox"/> Yearly inspection <input type="checkbox"/> Other			
Completed by: ..... (printed name).		..... (signature)	
Company: .....			
Remarks & Action Taken:			
Device left in a safe usable condition: YES. <input type="checkbox"/> NO <input type="checkbox"/> (if "NO" explain in remarks the action taken)			

Date: _____		Time: _____	
Service Type: <input type="checkbox"/> Periodic inspection <input type="checkbox"/> Monthly inspection <input type="checkbox"/> 6-month inspection <input type="checkbox"/> Repair <input type="checkbox"/> Yearly inspection <input type="checkbox"/> Other			
Completed by: ..... (printed name).		..... (signature)	
Company: .....			
Remarks & Action Taken:			
Device left in a safe usable condition: YES. <input type="checkbox"/> NO <input type="checkbox"/> (if "NO" explain in remarks the action taken)			

Date: _____		Time: _____	
Service Type: <input type="checkbox"/> Periodic inspection <input type="checkbox"/> Monthly inspection <input type="checkbox"/> 6-month inspection <input type="checkbox"/> Repair <input type="checkbox"/> Yearly inspection <input type="checkbox"/> Other			
Completed by: ..... (printed name).		..... (signature)	
Company: .....			
Remarks & Action Taken:			
Device left in a safe usable condition: YES. <input type="checkbox"/> NO <input type="checkbox"/> (if "NO" explain in remarks the action taken)			

Date: _____		Time: _____	
Service Type: <input type="checkbox"/> Periodic inspection <input type="checkbox"/> Monthly inspection <input type="checkbox"/> 6-month inspection <input type="checkbox"/> Repair <input type="checkbox"/> Yearly inspection <input type="checkbox"/> Other			
Completed by: ..... (printed name).		..... (signature)	
Company: .....			
Remarks & Action Taken:			
Device left in a safe usable condition: YES. <input type="checkbox"/> NO <input type="checkbox"/> (if "NO" explain in remarks the action taken)			

Date: _____		Time: _____	
Service Type: <input type="checkbox"/> Periodic inspection <input type="checkbox"/> Monthly inspection <input type="checkbox"/> 6-month inspection <input type="checkbox"/> Repair <input type="checkbox"/> Yearly inspection <input type="checkbox"/> Other			
Completed by: ..... (printed name).		..... (signature)	
Company: .....			
Remarks & Action Taken:			
Device left in a safe usable condition: YES. <input type="checkbox"/> NO <input type="checkbox"/> (if "NO" explain in remarks the action taken)			

User Notes:

# Mackworth

**Mackworth**

Unit 1,  
Tir Llwyd Industrial Estate,  
Saint Asaph Avenue,  
Kinmel Bay, Rhyl  
LL18 5JA

**Tel:****Email:****Disclaimer**

While every effort has been made to ensure the accuracy of information contained in this user manual, no liability can be accepted by Mackworth for any errors or omissions. Mackworth operates a policy of continuous improvement. Specifications and other data are subject to change without notice.