



*Magix*

Owner's Manual

Electric Wheelchair

Serial Number:

Date of purchase:



Your service specialist in  
Canada:

## Technical Guidelines and security for the users

Please read the operator manual carefully and follow the safety guidelines before using your wheelchair.

### Guidelines

The following instructions are provided for personal safety of the operator, caregivers and public in general.



#### Caution :

1. Danger of crushing injury! During the transfers the wheelchair should be turned off, it is necessary to power off the electrical control before sitting in the wheelchair and before you leave!
2. Danger of injury through the winding of clothes!
3. It is prohibited to hang objects on the backrest, risk of tipping!
4. Danger of crushing injury. Always install the feet on the footrest before powering the chair!
5. It is forbidden to stand on the footrest if it is not resting on the ground. Risk of damage to the Magix, or tripping, causing personal injury!
6. Any soft ground must be avoided (fine sand, mud etc). Danger of getting stuck and /or tipping over.
7. Do not roll on nails, or sharp objects, this can cause punctures and damages the wheels, risk of immobilisation of the wheelchair.
8. When the seat height exceeds the safe height of 57cm, operate the wheelchair on level ground only and do not cross obstacles or climb up or down a sidewalk curb. Danger of tipping.

9. Do not operate with the seat elevated or reclined while on unstable or soft ground, or with temperatures above +40°C or below -15°C, without the presence of an attendant that can help in case of getting stuck.
10. Do not place hands where indicated with a yellow triangle, and never under the footrest. Danger of injuries with risk of fingers being severed!
11. The wheelchair must not be raised by the backrest, arm, clothing protector or by the footrest!
12. If used in a vehicle, it's mandatory to use the supplied headrest as well as a 3 point seat belt fixed in the vehicle. The wheelchair restraint must not be used as a safety belt inside of a vehicle!
13. Improper positioning of the lower mounting of the cylinder changes the security settings. Danger of injury and tilting of the seat!
14. Before folding the armrest it is essential to check that nothing prevents its movement. Danger of injury and severed fingers at the hinge of the armrest!
15. Do not use clothing protector as transfer board if the load is higher than 80 kg. Danger of falling and injury.
16. Never place objects under the seat cushion. Make sure that people, in particular children, do not place feet, hands or other parts of the body below the seat mounted cushion!
17. If you can't see under the seat cushion, turn the wheelchair once on its axis before lowering the seat cushion, to assure you that there is nobody in the danger zone!
18. The free length of the thread of the rod for seat tilt adjustment should never be higher than 7.5 cm (3") Risk of damage and injury.
19. For the transport make sure that the vehicle is equipped with standardized anchorage. When traveling, the wheelchair should always be attached to the vehicle to the anchor points. Danger of crushing and of irreversible injury in the event of an accident.
20. When the motors are disengaged the brakes are inactive. There is a danger of rolling, especially on sloping ground! Always engage the motors when the wheelchair stopped.
21. The first exercises must be done in the presence of a caregiver, and at reduced speed until you get used to the wheelchair. For the purpose of learning overcome obstacles, a caregiver is recommended in case of tipping (chair 172 kg + weight of the user)!
22. To overcome obstacles of more than 5 cm in height, the adjustment of the tilt angle of the seat must be less than 10 degrees and the angle of the backrest to 100 degrees per report to the footrest.

23. To operate up and down slopes of more than 17% and to overcome obstacles of a height greater than 12 cm, a caregiver with the capacity to retain the wheelchair in case of tipping is mandatory (chair 172 kg + weight of the user) !
24. Descending an obstacle must be done at reduced speed, with the seat in the low position. Never descend an obstacle toward the front with the seat tilted forward!
25. Never overcome an obstacle by more than 5 cm in height without stopping with the front wheels in contact with the obstacle. Risk of damaging wheels and the wheelchair.
26. For security reasons do not use liquid acid batteries!
27. Damaged batteries! The acid gel contained in the batteries is highly corrosive! If batteries are damaged do not touch unless proper eyes and hands protection is being used.
28. Do not replace a fuse without informing the dealer and without his authorization. Risk of damage of the electrical and/or electronic of the wheelchair, and fire!
29. Do not use a charger other than the one supplied with the wheelchair. The charger must always receive enough air for cooling, do not put any cover, or placed in a box or near a source of heat. Danger of overheating and fire hazard.
30. When traveling outside, monitor regularly the the batteries and make sure you always have enough reserve for the return journey. If necessary, reduce your travel to avoid drainage of the batteries.
31. Ensure that no dirt (soil, gravel, wood, etc) is found between the oscillating arms to which the wheels are fixed and the frame. There is a risk of jamming of the mechanism and tipping when crossing obstacles!
32. If an object or dirt is trapped between the rims of the wheels, remove as soon as possible. This could cause damage and immobilise the wheelchair.
33. When transporting in a car, securing the wheelchair is mandatory. Do not attach the wheelchair in a vehicle otherwise than by the anchors points advocated by New Live. Failure to do, can cause serious injuries or death in case of accident!
34. If the wheelchair is used as a passenger seat or driver's seat in a car, it is mandatory to lower the height of the seat to lowest setting and power off the wheelchair before fastening the 3 point seat belts of the car.

35. If the wheelchair is used as a passenger seat or driver's seat in a car, the use of the headrest supplied with the wheelchair is mandatory as well as a 3 points seat belt fixed in the vehicle. The belt of the wheelchair restraint must not be used instead of a car seat belt.
36. The headrest must be adjusted to the height of the user's ears. Incorrect adjustment of the headrest can cause serious injuries in the event of a collision.
37. With the use of double rail ramps, it is necessary to ensure that they are sufficiently wide and located under the anti-tip wheels. Danger of tipping if the wheels do not fit in the ramps!

## Table of contents

1. Introduction
2. General Guidelines
  - 2.1 Control Element
  - 2.2 Switching off of the control
  - 2.3 Use of the wheelchair
  - 2.4 Operating Environment
  - 2.5 Electromagnetic Fields
  - 2.6 Risk of pinching and severation
3. Warranty Conditions
4. Delivery / purchase of used parts
5. Accessories and special equipment
6. Seat Adjustments
  - 6.1 Depth of the seat and position of clothing protector or guard
  - 6.2 Positioning of the lower mounting of the cylinder or backrest adjustment bar
  - 6.3 Width of footrest
  - 6.4 Armrest
  - 6.7 Headrest
  - 6.8 Footrest and legrest
  - 6.9 Seat height

- 6.10 Seat tilt
- 6.11 Recline
- 6.12 Tilting the backrest

7. Control R-Net

8. Control VR2

9. Transfers

10. Free wheels

11. Lighting

12. Linings of the seat and backrest

13. Operating the wheelchair

- 13.1 Crossing obstacles

14. Batteries and fuses

- 14.1 Batteries
- 14.2 Recycling of batteries
- 14.3 Main Fuse

15. Charger and autonomy of the wheelchair

- 15.1 Charger
- 15.2 Autonomy of the wheelchair

16. Cleaning

17. Maintenance



- 17.1 Tires and rims

18. Transport of wheelchair in the car

19. Recycling

20. Trouble shooting

- 20.1 Error codes of the wheelchair
- 20.2 Error codes of the command R-Net
- 20.3 Error codes of the VR Control2
- 20.4 Error codes of the charger

21. Technical Data

## 1.0 Introduction

Dear User,

We thank you for the confidence that you grant us by opting for this electric wheelchair. This 6 wheels innovative chair was design to better meet their needs, of experienced users.

Indoor, the pivot is very important and allows you to access all small parts such as kitchens or elevator.

Hills, slopes as well as the wet roads or obstacles (sidewalks or trails, etc.) require a grip and optimum wheels traction. As well with the six wheel drive, you can drive, brake and overcome obstacles safely in a fun way.

We hope that the *Magix* will bring you a lot of satisfaction and increase your movement.

## 2.0 General Guidelines

**The company NEW LIVE Sarl disclaims any liability or warranty for not taking account of the conditions mentioned in this manual and causing damage to the wheelchair, personal injuries or to his entourage!**

**The company NEW LIVE Sarl has the ability to choose a court in case of need.**

### 2.1 Control Element

The control of the wheelchair does not need maintenance. Do not open electric or electronic components (control, actuator, electronic box, etc).

With the slightest doubt to the proper functioning of the wheelchair, the retailer should be informed immediately and the chair should no longer be used.

For any problem, the dealer should be informed immediately. They will be able to repair and clear any faults. Do not use a wheelchair which has a faulty control.

## 2.2 Switching off of the control

Turn off the electrical control of the chair before sitting or getting out. Danger of crushing by involuntary movement of the seat.

Cutting the power can cause the driver to fall. The joystick must be released and the wheelchair must be off before turning off the control element.

### Caution:



**Danger of crushing injury! During the transfers the power should be turned off, always turn the power off before entering or exiting the chair**

## 2.3 Use of the wheelchair

The wheelchair should be used only by a single person. Do not transport passengers, play with the wheelchair in an inappropriate manner (e.g. children) or get on the/the footrests, the rear of the seat, the wheels or the mudguards. The clothing bags or other items must not hang and must be fixed to the wheelchair with a sufficient safety distance up to the wheels and other removable parts

Do not attach objects (ex. bag) at the rear of the backrest. The extra weight could tip on an incline or crossing an obstacle.

When in motion, user's feet must be on footrest.

Do not stand on the footrest if it does not touch the ground. Risk of damage with danger of fall injuries or tipping!

Changes to programs can only be done by the retailer. The inadequate operations can be dangerous. All electric wheelchairs are equipped with, at the time of their sale, a standard program which does not represent any danger for the driver. For all program changes, please contact your dealer (see first page for coordinates).

**Caution:**



**Danger of injuries if loose clothing get caught in the wheels or seat adjustment!**



**Do not fasten hang objects to the rear of the seat back or the armchair, risk of tipping!**



**Danger of injuries, always position feet on the footrest before driving the chair!**



**Do not stand on the footrest if it is not on the ground. Risk of damage with danger of falling, injuries or tipping!**

## 2.4 Use Environment

- The wheelchair must be used only on hard surfaces such as roads and paths. Avoid soft grounds (fine sand, mud etc.). The Chair may get bogged down and tip over. Turns in steep slope can be dangerous. (Danger of tipping!) The maximum slope of 17% must be respected and the maximum weight of the user must not exceed 140 kg).

**Note: The MAGIX is not intended to drive on soft land as the sand end without the specific option.** (Option to come; to keep you informed please contact your dealer. Coordinates see first page).

- Roll on the nails, spikes or sharp objects can cause punctures, damage the tires and immobilise the wheelchair.
- When the base plate exceeds the safe height of 57cm, it should drive the wheelchair on level ground only and do not cross obstacles or go down a curb. Danger of tipping.
- The temperatures above than +40C and lower than -15 degrees C may affect the operation of the wheelchair. If it is used in such temperatures, security cannot be guaranteed and a potential of malfunction exist. These temperatures are allowed in case of storage, during a shipping or on short trips. (Do not adjust the seat height, tilt angle or backrest angle when extreme temperatures exist.)
- High humidity in the air particularly at night can be damaging to electronic components (control). The result is of the condensed water which may appear when the wheelchair is often exposed to temperature changes. Operator must avoid exposing the wheelchair to extrem humidity (ex. holiday in humid regions). Puddles of water deeper than 8 cm must be avoided. If you cannot avoid water to height of batteries, malfunctions cannot be excluded. For this reason, operator must stop the wheelchair at the first opportunity and contact your dealer for service immediately.

**Caution:**



**Soft ground must be avoided (fine sand, mud etc.). Danger of getting stuck and /or tipping.**



**Do not roll on nails, spikes or sharp objects. This can cause punctures and damage the tires, risk of immobilisation of the wheelchair.**



**When the base plate exceeds the safe height of 57cm, drive the wheelchair on level ground only and do not cross obstacles or go down a curb. Danger of tipping.**



**Do not move with the wheelchair, in lost places or on sensitive ground, or by temperatures above +40c° or below -15c degrees, without the presence of a third person that can help in case of getting stuck or failure.**

## **2.5 Electromagnetic Fields**

This electric wheelchair has been tested with success, according to international standards, with regard to its electromagnetic compatibility. The intense electromagnetic fields which are generated by the radiant devices with a certain proximity, (e.g. large transmitting facilities) can lead to defaults on the Magix.

## 2.6 Risk of pinching and shear

There is a risk of pinch and severing of the fingers at the following locations:

- Supports for the armrest and the controller
- Legrest mechanism
- Legs of force and cylinder lifting seat mechanism
- All the mechanisms that are located under the seat base

**Caution:**



**Do not place hands to the places marked by this triangle, and never under the base plate. Danger of injury with risk of finger severing exist!**



**The wheelchair must not be lifted by the backrest, armrest, protected clothing or footrest!**



### **3.0 Warranty Conditions**

The offer of the following warranties shall take effect from the date of delivery from the factory:

- Electrical and electronic parts (controller/actuators/motors) : 1 year
- Mechanical Parts (defects in material and workmanship) : 2 years
- Batteries : 6 months

The warranty only covers replacement of defective parts. The defective parts will become the property of the manufacturer.

Other claims are excluded, in particular those concerning deductions, allowances.

Warranty claims are processed thru your local Magix dealer.

#### **Exclusion of warranty**

The following damages are excluded from the warranty:

- The damages which were not immediately reported,
- Damage caused by abuse, improper use, or an inadequate control,
- The damage caused by the failure or not following instructions, (e.g. connection inadequate from the charger, exchange the poles of the batteries, etc.),
- The damage resulting from any modifications of the product,
- The damage caused by use of non-OEM replacement parts or accessories, as well as an improper mounting.
- The wear parts apply to tires, brake linings, toothed belts, equipment, backrest, etc.

**Magix is granted the right to refuse the possible requirements of warranty after a detailed audit.**



## 4.0 Delivery/purchase of wear parts

The delivery and set up of all components of the electric wheelchair by an authorized dealer.

The delivery must include the following elements:

- Chair delivered in good order to customer with the seat adjusted to the height of the user.
- A headrest mounted and adjusted to proper height for user.
- A seat belt restraint.
- An electric seat lift.
- A lighting kit.
- A battery charger for connection to the power outlets 100 to 240 v.
- User's manual.

You can order replacement parts from an authorised dealer (see first page for coordinates).

## 5.0 Accessories and special equipment

For any accessory or special equipment, your dealer is at your disposal for the adequate information (see first page for coordinates).

**Notes: The headrest is mandatory during travel in a vehicle. For your safety the seat is equipped with a seat belt restraint. It is strongly recommended to wear the seat belt restraint which ensures a stable support in case of drop or sudden braking. However the seat belt restraint of the seat must not be used when traveling by car and does not replace the 3 point seat belt mandatory in cars!**

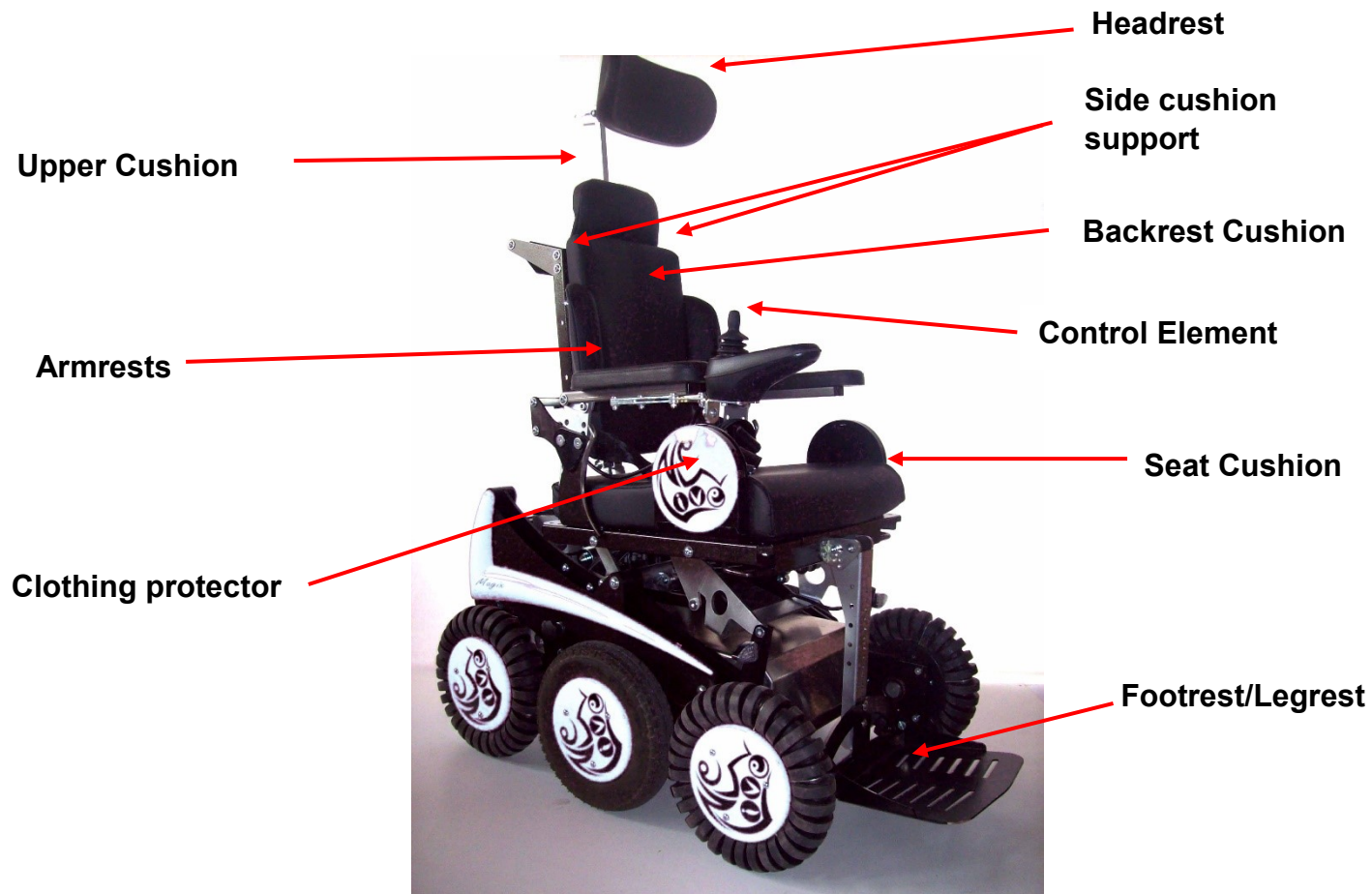
**Caution:**



**In case of travel in a vehicle, 3 point seat belt fixed in the vehicle is mandatory. The seat belt of the wheelchair is not an automotive restraint and must not be used as a replacement for the vehical restraint provided by the automobile manufacturer.**

## 6.0 Seat Adjustments

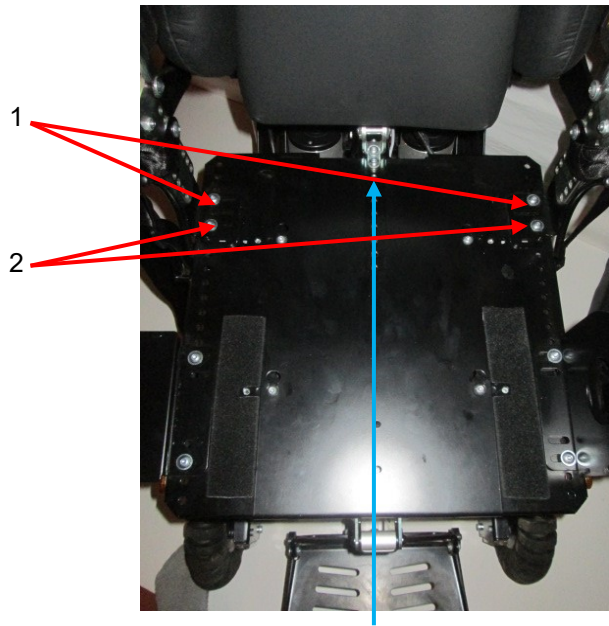
The Magix offers you a multitude of settings so that you can find the seating position and ideal for driving.



## 6.1 Depth of the seat

**Note: To avoid a risk of injury it is recommended to be two persons. A person to hold the backrest and a second person to screw.**

To adjust the seat depth it must:



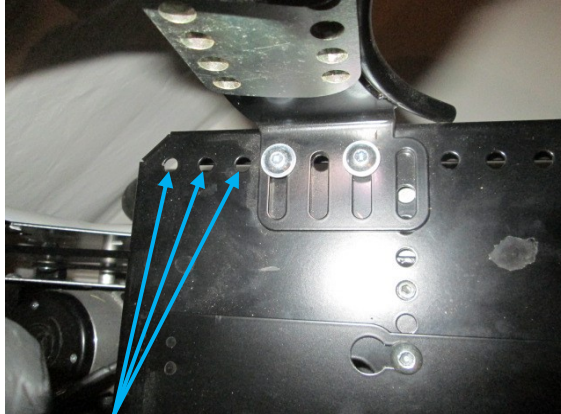
Lower mounting screws of the cylinder or adjustment

- Remove the seat cushion
- Old the backrest
- Unscrew the screws 1 and 2 fixing the brackets with armrests (Retain the nuts under the base plate) and the 2 bolts of the lower mounting of the cylinder or adjustment bar.
- Pull the 2 brackets of armrest the same distance toward the front or rear to adjust the depth.
- Refer to paragraph 6.2 to determine the position of the lower securing the cylinder or the adjusting bar of the folder.
- Retighten the screws, taking care to always have at least 1 hole free between the screws 1 and 2.

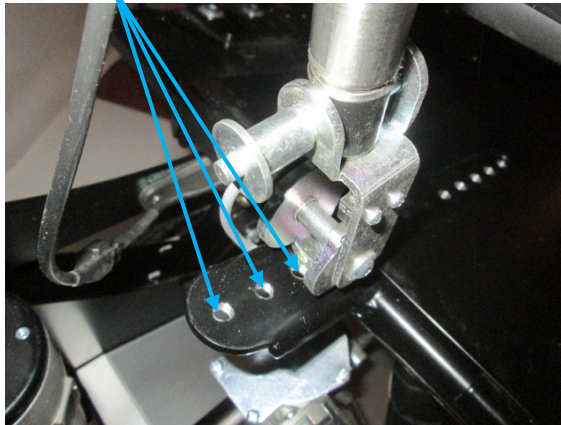
**Note: The back of the brackets of the armrest should never exceed the rear of the base plate on the wich they are fixed.**

## 6.2 Position of the lower mounting of the cylinder or adjustment bar of the backrest

The attached position of the cylinder or the manual adjusting bar of the backrest must be adjusted depending on the depth of the seat. For this you need to ensure that the number of free hole behind the base of the cylinder or the manual adjusting bar backrest coincides with the number of free hole on the base plate to the rear of the armrest support.



holes



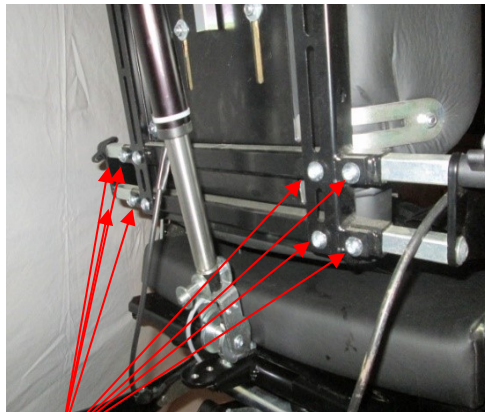
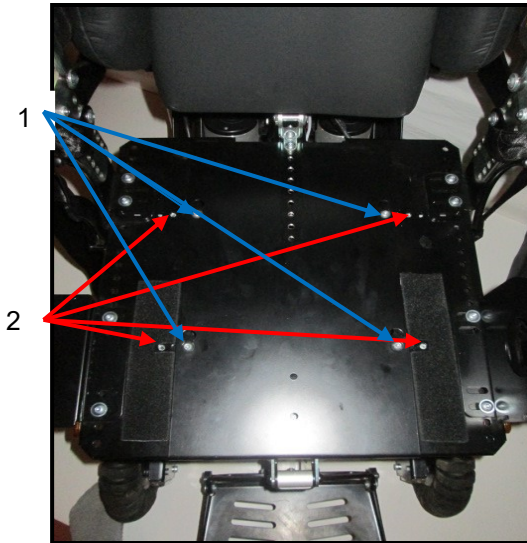
Example of a correct adjustment 3 and 3 free holes behind the support of the armrest and behind the base of the cylinder.

**Caution:**



**Improper positioning of the cylinder changes the security settings. Danger of injury and tipping!**

### 6.3 Width of the base plate



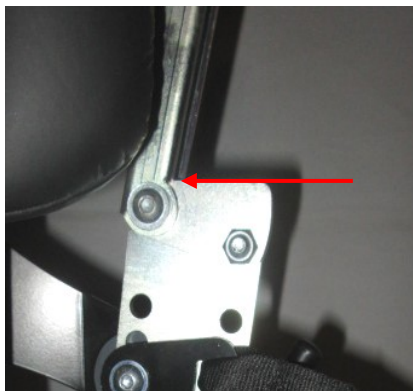
3

To adjust the width of the base plate you must;

- Remove the seat cushion
- Remove the 4 screws #1
- Slightly loosen the 4 set screw # 2
- Slightly loosen the 8 screws #3 at the rear of the backrest
- Adjust the unwanted width in a uniform manner on both sides by respecting the centering of the base plate
- Reinstall the screws of type #1
- Retighten all screws

## 6.4 Armrests

The wheelchair Magix is equipped with flip back angle adjustable armrests, adjustable in height, tilt, in depth and in width.



To raise the armrest he must pull the front of the armrest up and rotate toward the rear. Vice versa for the fold.

**Attention** before folding the armrest always check that nothing impeded its swing. Danger of severing at the hinge of the armrest!

1

2

### Adjusting the height of the armrests:

To adjust the height of the armrests you must:

- Unscrew the screw #1 and remove the seat belt restraint
- Unscrew the screw #2 which is located behind the seat belt restraint
- Remove the armrest support bracket by pulling it toward the inside of the wheelchair
- Reposition the bracket of the armrest on the screws spacers at the desired height
- Refit and tighten the screw #2
- Replace the seat belt restraint with the screw #1 and tighten the screw

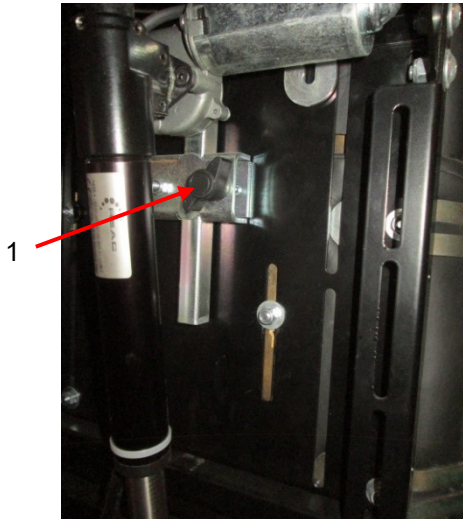


**Attention** before folding the armrest always check that nothing impeded its swing. Danger of severing at the hinge of the armrest!

## 6.7 Headrest



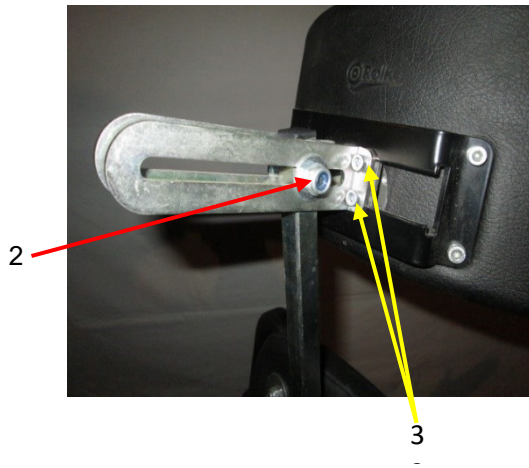
**Note: If the seat is used as a passenger or driver's seat in a car, the use of the headrest supplied with the wheelchair is mandatory. The headrest should be adjusted to the height of the user's ears. In the event of a collision, improper adjustment of the headrest can cause serious and irreversible injury.**



**To adjust the height of the headrest you must;**

- Loosen the thumbscrew #1 located at the rear of the backrest
- Adjust the headrest to the desired height
- Retighten the thumbscrew





**To adjust the depth and the angle of the headrest, you must:**

- Loosen the screw #2
- Adjust the headrest to the depth and to the desired tilt
- Retighten the screw

**To adjust the lateral position of the headrest (optional), you must:**

- Loosen the 4 screws #3
- Slide sideways headrest up to the desired position
- Retighten the screws

**Caution:**



**If the seat is used as a passenger or driver's seat in a car, the use of the headrest supplied with the wheelchair is mandatory.**



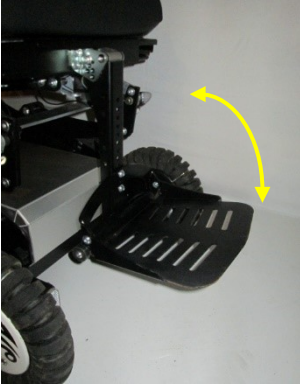
**The headrest should be adjusted to the height of the user's ears. In the event of a collision, improper adjustment of the headrest can cause serious and irreversible injury.**



## 6.8 Adjusting the footrest

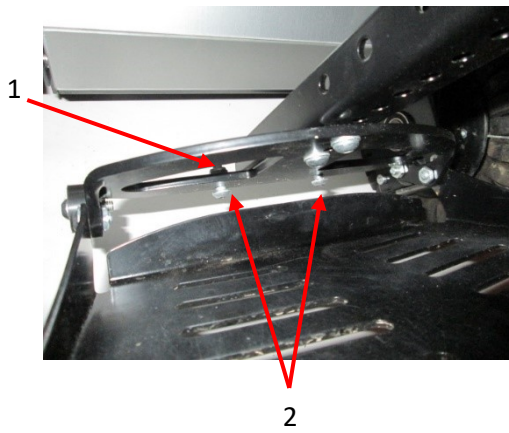
To facilitate the transport and transfers, the wheelchair Magix is equipped with a mono-bloc lift-type footrest and adjustable in different positions.

To raise the footrest it is necessary to lift the front of the footrest and pull back toward the top and toward the rear.



Vice versa to lower.

### Adjustment of the tilt of the footrest:

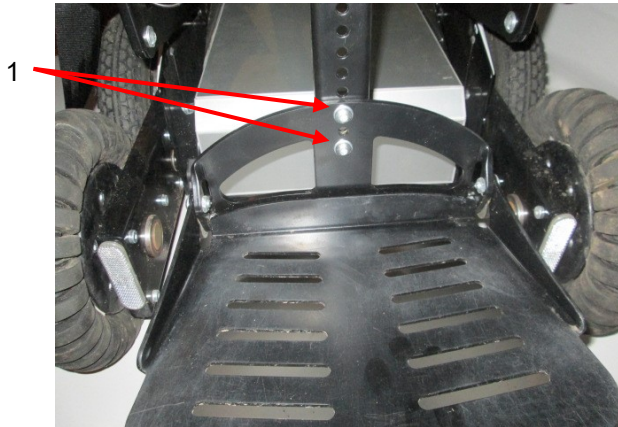


It is possible to change the tilt of the footrest. For this procedure it is necessary to:

- Loosen the jam nuts #1
- Screw or unscrew the screws #2 to obtain the desired tilt
- Retighten the jam nuts #1

### Height adjustment of the footrest:

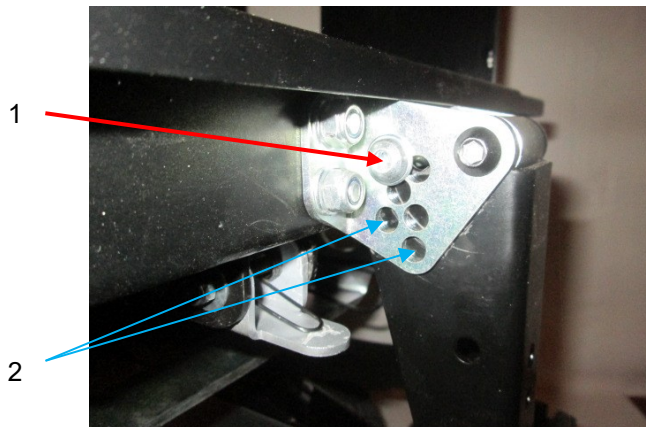
The height of the footrest can be adjusted by step of 2 cm).



To adjust the height of the footrest you must:

- Unscrew the screws #1 (Retain the nuts at the rear of the gallows)
- Place the bracket for the footrest to the desired height
- Retighten the screws #1

### Adjusting the tilt of the legrest:



To change the tilt of the legrest it must:

- Unscrew the nut on the set screw of bute #1 and remove
- Raise the legrest to the desired angle
- Replace the screw #1 in port 2 closer to the desired angle
- Replace the nut on the screw #1 and retighten

## 6.9 Height of the seat cushion

The seat height adjustment is done with the help of an electric motor. Please refer to pages 34 or 36 of the owner's manual according to the corresponding command.

### Caution:



**Never place objects in the space occupied by the system of elevation. Make sure nobody, (in particular children), put feet, hands or other parts of the body below the seat cushion mounted!**



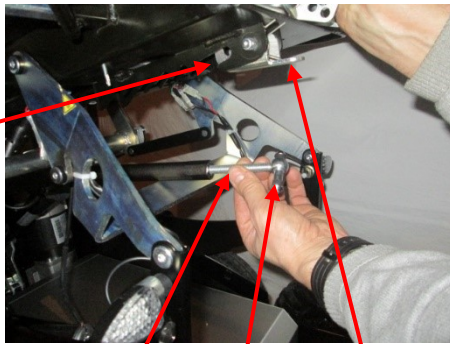
**If you do not see under the seat cushion, turn the wheelchair once on its axis before lowering the seat cushion, to assure you that there is nobody in the danger zone!**

## 6.10 Angle of tilt of the seat cushion

- **Electrical Adjustment**

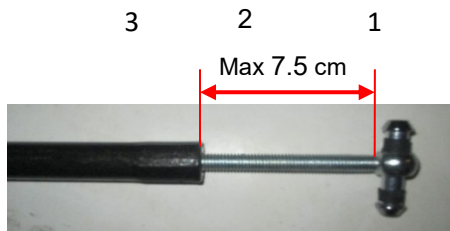
For the electrical adjustment of the tilt of the seat base, refer to pages 34 or 36 of the owner's manual according to the corresponding command.

- **Manual Adjustment**



**To adjust the tilt angle of the seat it is recommended to make this operation with two persons. For this it is necessary to:**

- 1 - Release the adjusting rod by pushing up the metal tab 1 located at the front of the seat cushion and maintain the seat bottom to the top.
- 2 - Screw the rod 3 toward the rear to reduce the tilt or the Unscrew to increase the tilt angle of the seat.
- 3 - Again push on the tab 1 and then refit the pin 2 in its housing 4 and release the tab 1 to lock the axis 2.



**Note: For safety reasons, the exposed length of the thread on the adjusting rod should never be more than 7.5 cm (3'')**

**Caution:**



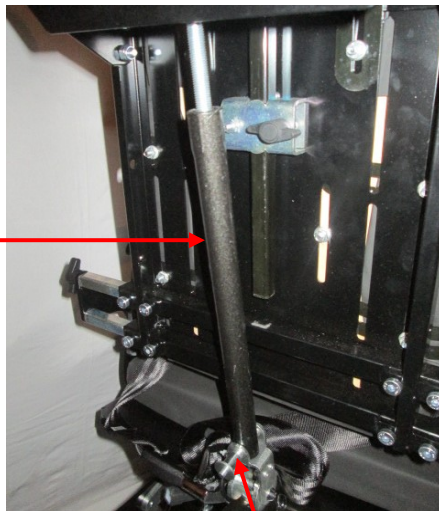
**The free length of the thread of the rod for seat tilt adjustment should never be higher than 7.5 cm (3'') Risk of damage and injury.**

## 6.11 Angle of the backrest

- **Electrical Adjustment**

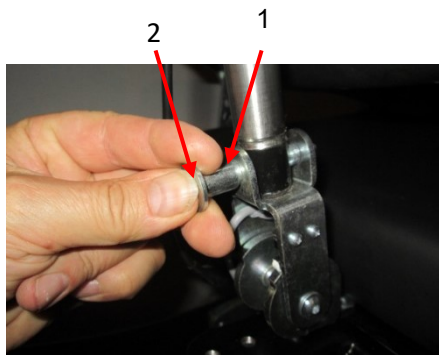
For the electrical adjustment of the tilt of the backrest, refer to pages 32 and 36 of the owner's manual according to the corresponding command.

- **Manual Adjustment**



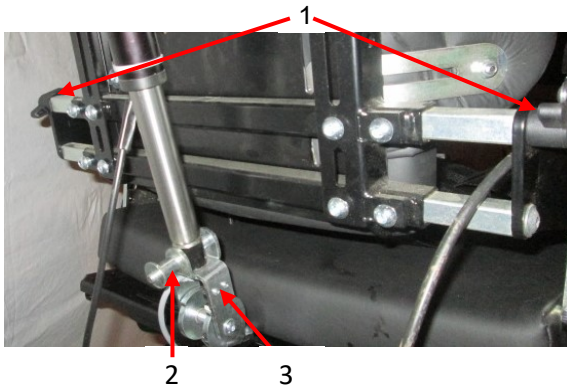
**To adjust the tilt of the backrest you must be:**

- 1 Press the 2 button located at the end of the pin 1 then remove to release the adjusting bar 3.
- 2 Screw toward the top the bar 3 to increase the tilt of the backrest or unscrew downward to decrease the tilt of the backrest.
- 3 Reposition the bar 3 in its holder and replace the pin 1 by pressing the button again 2.



## 6.12 Tilting the backrest

To allow the occasional transport in a low vehicle, the wheelchair Magix provides the ability to fold the backrest on the base of the seat.



**To fold the backrest you must:**

- Unscrew and remove the 2 thumbscrews #1
- Remove the pin 2 (refer to the previous chapter)
- Fold down the backrest on the seat base.

Reverse the instructions to put the seat back in place by lifting the backrest to put the thumbscrew. **Caution: Do not pinch the cable of the command.**

**Note: The motors of the chair are flanges or blocked if the bracket 3 is tilted to the rear. To roll the wheelchair with the command and the backrest folded up, it is necessary to ensure that the bracket 3 is in the raised position or rotated toward the front.**



**Caution:**



**For transportation make sure that the vehicle is fitted with standard anchorage points. When traveling the wheelchair should always be attached to the vehicle to a 4 points anchor of the seat. Danger of crushing and severe injury in the event of an accident.**

**Caution:**



**Danger of injury and shear at the hinge of the armrest!**



## 7.0 Control R-Net



The control R-Net is provided with a standard joystick. If it is turned ON it can direct the wheelchair in all directions. The wheelchair always follows the direction which is given by the joystick. If you move the joystick toward the front, the wheelchair will go forward. If it moves to the left, the wheelchair will turn to the left. The same thing to the right and backward.

There are three driving programs which can be selected with the profile key. Each program can be adjusted by the dealer so that it corresponds to the client. These programs can only be preprogrammed by a specialist. If modification are needed, please contact the reseller (see first page for coordinates).

In case of failure an error code is indicated on the display. This points out where the error is located. Immediately inform the dealer so that necessary measures can be taken. Errors codes are listed in section 20.



**On/off key**

**Warning**

**Horn Button**

**Lights**

**LCD Screen**

**MODE key (coming and going between driving and adjustments of the seat)**

**PROFILE Key (to select the driving program)**

**Left /Right turn signal**

**Keys for the speed adjustment - / +**



**By pressing the keys, lights, turn signal or warning, the desired functions will be ON/OFF**

### **Locking of the control**

The wheelchair has a locking control feature to prevent an unintended use.

#### **To lock the control:**

- 1 Turn off the control by pressing the on/off key until you hear "beep"
- 2 Push the joystick forward until you hear "beep"
- 3 Pull back the joystick until you hear "beep"

#### **To unlock the control:**

- 1 Turn on the control
- 2 Push the joystick forward until you hear "beep"
- 3 Pull back the joystick until you hear "beep"



### Mode Key

Press the MODE key, for control menu of all electrical functions.

The first function that is displayed is the adjustment of the seat height (LIFT).



A brief movement of the joystick to the left or right, will open a scroll down menu of different functions of the electric wheelchair

Push joystick forward or backward to select the desired setting.



Press the MODE key to exit the menu and return in driving mode.



### PROFILE key

With PROFILE key, you will select one of the 3 operating profiles. The profiles can be individualized by the dealer with an appropriate software (PG-Drivers).



By pressing these keys you have the option in each of the profiles to adjust the speed. Slower with the left key and faster with the right key.





### Electrical Function and security

When you use the raised seat or recline seat functions and have adjusted or extended them beyond the point of safe travel, the controller will automatically put the chair into a safety mode showing an orange turtle. This will allow the chair to move at a reduced speed.



If the adjustment made by the user goes beyond what is recognized as dangerous, the controller will flash a red turtle and will not move at all until the positioning of the chair is returned to a safe operational range.

To regain normal use of the chair the operator must lower the height of the seat or reduce the angle of the seat cushion or backrest.



### Charge indicator for the batteries

The load indicator informs the user of the charge of the batteries. Make sure that the charging indicator does not fall under the last 3 red bars, in order to ensure that the wheelchair does not stop unexpectedly.



### Recharge the batteries

The connection of the charger is located on the bottom side of the control box. More information on loading and the batteries under section 14 and 15.

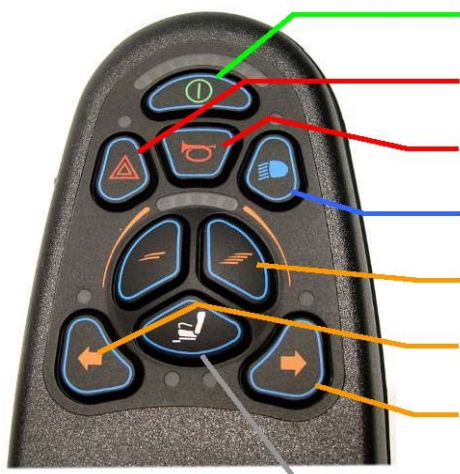
## 8.0 Control VR2



The control VR2 is provided with a standard joystick. If it's turned ON you can drive the wheelchair in all directions. The wheelchair always follows the direction which is given by the joystick. If you move the joystick toward the front, the wheelchair will go forward. If it moves to the left, the wheelchair will turn to the left. The same thing to the right and backward.

The user has a choice of speed profiles. Each driving of profile can be set individually by the reseller. In case of change, it is necessary to contact the reseller (see first page for coordinates).

In case of failure it appears an error code on the display. It informed of where the error is located. This error information should be communicate immediately to your dealer in order to initiate the necessary measures. Errors codes are listed in section 20.



**On/off key**

**Warning**

**Horn Button**

**Lights**

**Speed keys - / +**

**Left/Right turn signal**

**Seat key (electrical functions of the wheelchair)**

**By pressing the keys, lights, turn signal or warning, the desired required functions will be ON/OFF**

## Locking of the control

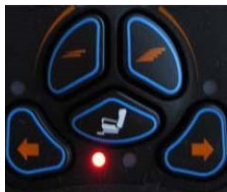
The wheelchair has a locking feature to prevent an unintended use.

### To lock the control:

- 4 Turn off the control by pressing the on/off key until you hear "beep"
- 5 Push the joystick forward until you hear "beep"
- 6 Pull back the joystick until you hear "beep"
- 7

### To unlock the control:

- 4 Turn on the control
- 5 Push the joystick forward until you hear "beep"
- 6 Pull back the joystick until you hear "beep"



### Seat Button

Press the seat button to access the settings for the electrical functions (maximum of 2 possible functions).

With a brief push of the joystick to the left or right you switch from one function to another.

When the function is selected, push the joystick forward or backward to reach the selected position.



Press the seat button to return in driving mode.



### **Speed keys**

The command has 5 profiles of preset speeds.

Press the speed button left to lower the speed and the right one to increase the speed.



If necessary, each profile can be set individually by your dealer with an appropriate software (VR2 Drivers).



### **Charge indicator for the batteries**

The load indicator informs the user on the charge of the battery. It is recommended to make sure that the charging indicator does not fall under the last 3 red bars, in order to ensure that the wheelchair does not stop unexpectedly.



### **Reload the batteries**

The connection of the charger is located on the bottom side of the control box. More information on loading and the batteries under section 14 and 15.

## 9.0 Transfers

### 9.1 Lateral Transfer

1. Place the wheelchair as close as possible to where you want to perform the transfer (chair, bed etc.)
2. Using the lift function, if necessary adjust the seat height.
3. Turn off the control.
4. If necessary raise the footrest.
5. Raise the armrest
6. Fold the protected garment. To do this, pull the protected garment upwards, and then to the outside to rotate.
7. You can transfer by dragging on the protected garment (maximum load on the end of the protected clothing 80 kg).

**Note: For transfers requiring more than 80 kg on protected garment, it is imperative to remove the outside extremity of the protected-clothing on the transfer point or use a transfer board.**

### 9.2 Frontal Transfer

1. Place the wheelchair in front of the seat base to where you want to perform the transfer.
2. Using the lift function, if necessary adjust the height of the seat.
3. Turn off the control.
4. If necessary raise the footrest.
5. You can transfer by taking support on the armrest.

## 10.0 Free wheel mode

The motors of the wheelchair are equipped with brakes that prevent the wheelchair from rolling without control when the command is in the off position. To push the wheelchair by hand, these brakes must be disengaged.

Note: motors must be disengaged by an attendant and not by the user! This ensures that the motors are disengaged only in the presence of an attendant to secure the wheelchair and prevent it from rolling accidentally.

On each motor is located a red clutch lever to engage and disengage the respective motor.



### Disengage the motor :

1. Turn off the power
2. Rotate the redclutch lever (1) in the vertical position. The motor is disengaged.

**Note: If the release is difficult to make, lightly push the MAGIX forward or backward to remove the pressure exerted on the mechanism.**



### Engage the motor:

Rotate the red clutch lever (1) in the horizontal position, the motor is engaged.

**Note: For driving, both engines must be engaged.**

### Caution:



**When the motors are disengaged the brakes are inactive. There is a danger that the wheelchair to move by itself, especially on sloping ground! Always engage the motors when the wheelchair is stopped!**



## **11.0 Lighting**

The wheelchair is equipped with a lighting kit LED for a visibility and optimum security on the road.

## **12.0 Seat and backrest**

The comfort cushion provides good distribution of pressures, is attached by two Velcro strips. The cover can be removed and be washed at 30C.

The covers of the backrest cannot be removed. The surface can be cleaned with soapy water. Do not soak.

## **13.0 Driving the wheelchair**

**Before driving the wheelchair, these instructions must be read carefully.**

Operate first in a familiar place with enough space. The first exercises must be done in the presence of an attendant, and at reduced speed until user is confident with the electric wheelchair. While learning how to cross barriers and climb curbs an attendant must be present. The attendant must have the ability to retain if it is tipped over.

The wheelchair is rated for grades up to 17 %.

Obstacles up to 5 cm in height must be crossed at reduced speed and can be crossed in all directions.

The obstacles more than 5 cm in height must be crossed in right angle. To overcome the obstacles of more than 5 cm in height, the adjustment of the angle of tilt of the seat must be less than 10 degrees. The angle of the backrest must not exceed 100 degrees in relative to the base plate. The wheelchair can overcome obstacles up to 12 cm.

Depending on the weight, size and capabilities of the user, of the greater heights than 12 cm can be crossed. However greater heights than 12 cm must be crossed with the presence of an attendant having the ability to retain the chair if it is tipped (chair 172 kg + weight of the user)!

The curb cuts and sidewalks cut outs must be approached at very low speed, with the seat in the low position. It is advisable to tilt the seat base toward the rear. Never climb down a barrier with the seat tilted forward!

## Caution:



The first exercises must be done in the presence of an attendant, and at reduced speed until the user is confident with the electric wheelchair. For the learning of the crossing of barriers the presence of an attendant having the capacity to retain the wheelchair in case of tipping, is mandatory (chair 172 Kg + weight of the user)!



To overcome obstacles of more than 5 cm in height, the adjustment of the angle of tilt angle of the seat must be less than 10 degrees and the angle of the backrest 100 degrees relative to the base plate.



Up and Down slopes more than 17% and to overcome obstacles of a greater heights than 12 cm, the presence of attendant with the physical ability to retain the wheelchair in case of tipping is mandatory (chair 172 kg + weight of the user) !



The lowering obstacles must be at reduced speed, with the seat in the low position. Never go down an obstacle forward, with the seat tilted forward!

## Overcome obstacles:

The obstacles more than 5 cm can be passed through or over at reduced speed without stopping.

### To cross an obstacle more than 5 cm high:

1. Make sure the footrest is high enough, otherwise raise the seat so that the footrest clears the obstacle.
2. Position the wheelchair perpendicular to the obstacle at 90 degrees and touch the obstacle with both front wheels.

3. Stop.
4. Adjust the tilt of the seat below 10 degrees and raise the backrest of no more than 100 degrees relative to the seat base.
5. Accelerate to maximum until the rear wheels are over the obstacle.
6. Maintain acceleration until the rear wheels are over the obstacle.

**Important: Do not stop when crossing obstacle.**

**Note: If you are unable to cross the obstacle and the wheelchair is stuck in the middle of the crossing, you must get off the obstacle in reverse and look for another alternative.**

**Down an obstacle more than 5 cm:**

1. Position the wheelchair perpendicular to the obstacle and stop as close as possible to the edge.
2. Adjust the seat height to the lowest position.
3. Verify that the seat does not tilt forward, if necessary, tilt the seat to the back.
4. Down the obstacle at minimum speed.

**Caution:**



**Never cross an obstacle more than 5 cm in height without stopping and having made a contact with the obstacle. Risk of bursting of wheels and immobilisation of the wheelchair.**

## 14.0 Batteries and fuse

### 14.1 Batteries

The wheelchair is equipped with two 12 volt batteries with a power output of 80 Ah. Only gel SLA type are allowed. The batteries do not require maintenance. **Note: To maximize the longevity of the batteries, you must respect the advice of charge of the chapter “15.1 Charger”.**

To replace the batteries, you must (careful, due to the weight of the battery it is recommended to perform this operation with another person):

1. Unlock the seat by pushing up the metal tab located on the front of the seat base (see section 6.10).
2. Tilt the seat forward and the block by placing the axis of the bar of the cylinder in one of the three notches located under the base plate. Caution do not raise the cushion during the replacement of batteries, could drops.
3. Unscrew the two butterflies screws located on the side of the cover of the batteries and the two butterflies screws arrears located on the side of the chassis between the center wheels and arrears and remove the cover toward the front.
4. Lift the red and black protective caps terminals located at the front of the first battery and unscrew the screws.
5. Move the cable to the side and remove the first battery by pulling it with the strap that surrounds it. Slide the second battery forward a little and turn terminals toward to the top.
6. Lift the red and black protective caps terminals unscrew the screws.
7. Remove the second battery by using handle on the top of the battery.
8. Remove the strap from the old battery and place it on the new battery.
9. Reposition the wheelchair with the new batteries with opposite direction. (Attention, take care to replace the insulating red and black covers on the battery terminals).

**Note: For travel by plane, the airline must be advised in advance of the transport of the wheelchair.**

**Note: To save batteries, disconnect the main fuse under the cover of the batteries, in the event of non-use of the wheelchair for a long period. At the latest after three months, a loading will be necessary in order to avoid, as much as possible, a failure of batteries.**

Caution:  batteries must be sealed lead acid (SLA).

## 14.2 Batteries recycling

Old batteries should be recycled following the regulations in force.

### Caution:



**Damaged batteries! The gel contained in the batteries acid contains highly corrosive!**

**Hands and eyes protection must be used when replacing damaged batteries.**

## 14.3 Main Fuse

The wheelchair is equipped with a main fuse calibrated to ensure a functioning and an optimal electrical safety. This fuse is placed in the front of the batteries compartment and can be replaced in case of overheating or current overload etc.

To replace it, it is necessary to:

1. Remove the batteries cover (See section 14.1).
2. Open the fuse holder which is located before the first battery.
3. Replace the fuse by an original New Live fuse.
4. Reposition the wheelchair with the opposite direction.

**Note: Any electrical problem must be reported to your dealer. In case of fuse cut out, please contact your dealer to discuss the circumstances. It is forbidden to replace a fuse without having informed your dealer and without having his permission (see first page for coordinates). Otherwise the electric/electronic damage would be excluded from the warranty.**

### Caution:



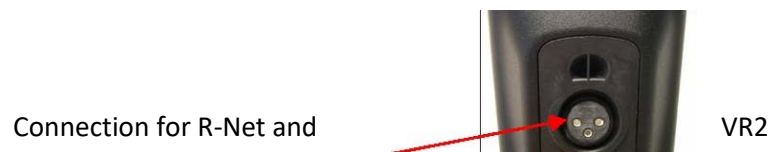
**It is forbidden to replace a fuse without informing the dealer and without his authorization. Risk of damage of the electrical and/or electronic of the wheelchair, and risk of fire.**

## 15.0 Charger and autonomy of the wheelchair

### 15.1 Charger

A 24v charger is included with your purchase. Make sure the power is off before charging. When charging the wheelchair be sure to connect the charger to the wheelchair before connecting the charger to the power outlet.

The connection is located on the underside of the control unit:



Once the batteries are fully charged unplug charger from wheelchair and power outlet. An orange LED indicates the level of charge of the batteries. A green LED indicates that the batteries are charged.

For maximum benefit of the batteries, it is recommended to recharge the batteries over night after every use. The charge will stop automatically when the batteries are full.

In case of high discharge (more than 3 red leds) it is essential to connect the charger immediately after use of the wheelchair. A prolonged discharge of batteries caused their premature deterioration.

If the batteries are fully discharged, the loading time will not exceed twelve hours. Most of the time 6 to 8 hours is enough for a normal discharge. Never interrupt a charge before the full charge of the batteries.

**Note: It is necessary to recharge the batteries immediately when they are discharged and never interrupt a charge before the charger indicates that the batteries are charged. Risk of premature deterioration of the batteries.**

**Caution:**



**If a charging problem is manifested due to batteries too old or unloaded, please inform your dealer immediately in order to avoid a possible failure of the wheelchair.**



**It is prohibited to use a charger other than the one supplied with the wheelchair. Any damage caused by using another charger would not be covered by your warranty. Please obtain the chargers exclusively from your dealer (see first page for coordinates).**



**The plugged-in charger must always receive enough free air at the level of the cooling fins. The plugged-in charger must not be covered, or placed in a box or near a source of heat. Danger of overheating and fire risk.**

## **15.2 Autonomy of the MAGIX**

The autonomy of the wheelchair strongly depends on the topography. On flat ground you will reach a distance of approximately 28 to 35 km on steep grade 18 to 25 km. It is recommended to have several small breaks when using the MAGIX on steep grade to avoid the motors overheating.

## 16.0 Cleaning

Clean the normal dirt with a damp cloth and dry with a dry cloth

For the tenacious dirt it is allowed to use a mild cleaning and diluted (soap). Never use products for furniture, solvent or a cleaning product containing alcohol!

**Note: Before each use, and after use in a field, the wheels can be filled with dirt, you must always ensure that no dirt (soil, gravel, wood, etc.) cannot be found between the oscillating arms, the wheels, and the frame of the wheelchair. The accidental blockage of the swing arm or a safety pawl located between the swing arm and the chassis can affect the stability of the chair. Danger of tilting the wheelchair when you overcome obstacles!**

**Caution:**



**It is forbidden to clean the wheelchair with a high pressure device or under running water!**



**It is always necessary to ensure that no dirt (soil, gravel, wood, etc.) is found between the oscillating arms, wheels, and the frame of the wheelchair.**



## 17.0 Maintenance

The wheelchair does not require special maintenance from the user. To ensure an ideal functioning, the wheelchair is to be taken back to the dealer approximately once a year.

Please be attentive to the following points:

- Keep the wheelchair clean
- Store the wheelchair only in dry room
- Monitor the cable connection
- Monitor the joystick boot
- Monitor the charging of the batteries
- Report any failure of electrical functions or the control to your dealer

### 17.1 Tires

The wheelchair is equipped with 2 standard tires and 4 wheels omnidirectional.

For the tires, it is necessary to check once a month the air pressure which should be between 3 and 3.3 bar. The inflation is through a valve like a regular tire and can be done at the gaz station. A tire pressure too low can affect performance, autonomy and can damage the rims. When the tire is too old it may disintegrate. If it's the case you must inform immediately the dealer.

The omnidirectional wheels are equipped with 30 solid castors wheel wraps. For a good mobility of the wheelchair, the wheels must always be as clean as possible. If an object (gravel, piece of wood, etc.) or dirt is trapped between wheels, remove as soon as possible. Objects or dirt trapped can cause a breakage and immobilise the wheelchair.

#### Caution:



**If an object (gravel, piece of wood, etc) or the dirt is trapped between wheels, remove as soon as possible. Objects or dirt trapped can cause a breakage and immobilise the wheelchair.**

## 18.0 Transport wheelchair in a car

The wheelchair Magix is hereby approved for the transport in accordance with the ISO standard 7176-19, ISO 10542-1

Here you will find information relating to the wheelchair Magix has been subjected to crash tests. You will also find information on the transportation of persons in their wheelchair on board a vehicle, information on the fastening systems used during the crash tests, as well as diagrams of the anchor points on the seat. Anchorage devices (hooks, straps, quick coupler etc.) of a fastening system wheelchair must be installed on the anchorage points indicated on the seat.

The Magix has been tested in accordance with ISO 7176-19 and ISO 10542-1, using an anthropomorphic dummy (75 kg Hybrid 2), vehicle moving toward the front, with a frontal impact, and a fastening system of the wheelchair (system to 4 anchor points and a securement system rapid DAHL "Docking station" not available in North America), as well as a restraint system to 3 points for the occupant (lap and shoulder conform to ISO 10542). During the tests, the product has not been changed and does not have spare parts, or accessories.

The results obtained following the tests carried out show that our product is resistant to strong impacts products during the crash tests, in accordance with the ISO standard 7176-19. And therefore, it can serve as a seat on board a vehicle.

The Magix can be transported with user, if the vehicle is equipped with fastening system wheelchair and restraint of the occupant complies with the requirements of standard ISO 10,542. In order to determine if the system that you are using meets these requirements, please contact the manufacturer of the fastening system of the wheelchair and occupant restraint.

Because the crash tests (simulation of a frontal impact) may not, in any case, repeat all the real situations of the road and represent a fictitious test performed in the laboratory, **we recommend that you always, if it's possible, to transfer the wheelchair user to a seat in the vehicle and store the wheelchair in the luggage compartment.** By design, the seat of the vehicle offers the highest level of security because it is anchored to the chassis and provided for this purpose. If the wheelchairs had to be manufactured in accordance with the requirements imposed on the car they could no longer fulfill their role, namely ensuring the mobility of persons with disabilities.

## Transport

For all transportation and travel in a car fixing the wheelchair is mandatory. It's mandatory to attach the seat in a rolling vehicle by the points of ties or station of stowage advocated by New Live. Danger of serious injury or death in case of accident!

If the wheelchair is used as a passenger seat or driver's seat in a car, it must be necessarily to lower the seat height at the minimum and turn off the control of the wheelchair, before fastening the 3 point seat belt, mandatory in a car.

If the wheelchair is used as a passenger seat or driver's seat in a car, the headrest supplied with the wheelchair is mandatory as well as a 3 point seat belt fixed in the vehicle. The belt of Wheelchair restraint must not be used for traveling.



**For all transportation and travel in a car, fixing of the wheelchair is mandatory. Attach the wheelchair in a vehicle by the points of ties or station of stowage advocated by New Live. Danger of tearing, that can cause serious injury or death in case of accident!**



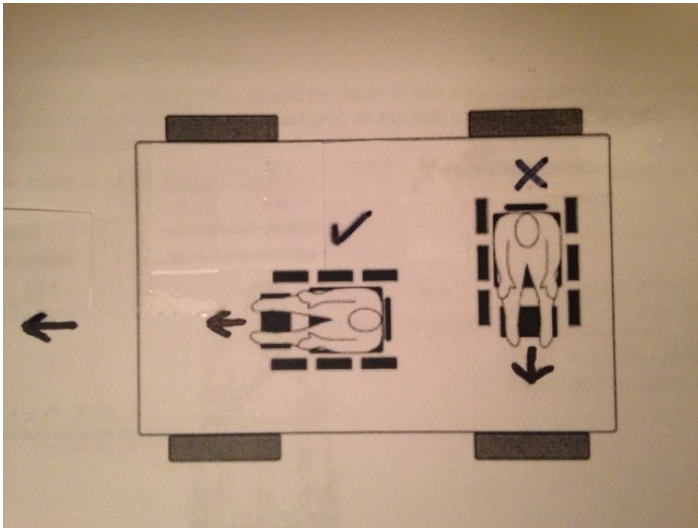
**If the wheelchair is used as a passenger seat or driver's seat in a car, it must be necessarily lower the seat height at the minimum and turn off the control of the wheelchair before fastening the 3 point seat belt, mandatory in a car.**



**If wheelchair is used as a passenger seat or driver's seat in a car, the use of the headrest supplied with the wheelchair is mandatory as well as a 3 point seat belt fixed in the vehicle. The belt of Wheelchair restraint must not be used for traveling!**



**The headrest should be adjusted to the height of the user's ears. In the event of a collision, a bad adjustment of the head support can cause serious injury. (See 6.7)**



**If the person must be transported on board the vehicle in his wheelchair it is appropriate to follow the following recommendations:**

If the person is sitting on his wheelchair, the wheelchair must face forward and must be secured by using a system of attaches to the Chair and of a restraint system for the occupant (the systems must be consistent with the requirements of the ISO 10,542 or SAE J2249). The attachment system and the restraint system must be installed in accordance with the instructions issued by their manufacturer, as well as the manufacturer instructions.

**The test standard conforms to ISO 7176-19 provides only for the transport of wheelchair positioned in the direction of forward. As well, the wheelchair must never be oriented**

**laterally.**



**If possible, it is preferable to install the user on a seat in the vehicle and store the wheelchair in the luggage compartment.**

If possible, it is **appropriate to remove** all the additional components and removable seat and store them safely. Like:

- Canes
- The removable cushions
- The therapeutic Tablets

No modification or substitution should be made at the anchorage points or structural components of the seat without the opinion of the manufacturer, at the risk of making the chair unfit for transport aboard a vehicle and make the manufacturer's warranty null and void.



In the event of an accident or impact, an inspection by your reseller is mandatory before it's re-use.

The wheelchair user is required to use the lap belt and the chest belt. This reduces the risk of impact between the components of the vehicle and the head and/or chest of the user. The chest belt should not go on the neck. The lap belt should go just above the iliac bone.



**No modification or substitution must be made to the wheelchair without having the opinion of the manufacturer, at the risk of making the chair unfit for transport aboard a vehicle and make the manufacturer's warranty null and void.**



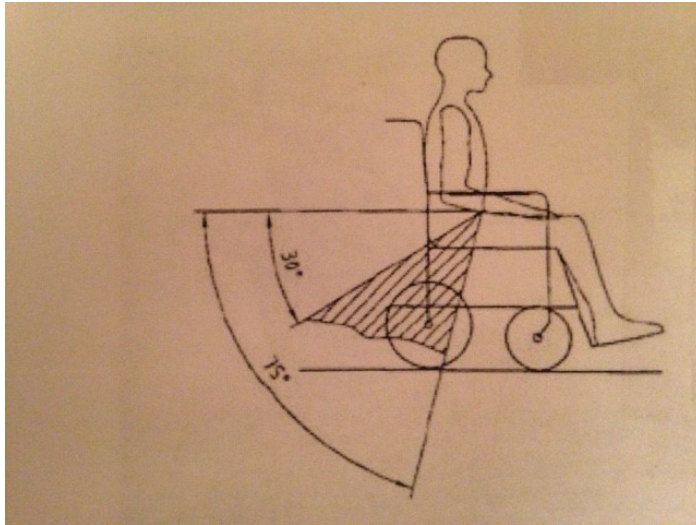
**In the event of an accident or impact, an inspection by your reseller is mandatory before it's re-use.**



**The occupant of the wheelchair is required to use the lap belt and the shoulder belt. The chest belt should not go over the neck and the lap belt should go just above the iliac bone.**



**The 4-point harness on the backrest, are not suitable for transport**



The fastening systems and restraint of the occupant must sit on the lower front side of the body, so that the angle of the lap belt would be in the range between 30° and 75° relative to the horizontal.

A sharper angle for the seat belt is desirable, close to 75° without ever exceed this value.

Never put the seat belt above the armrests, closer as possible to the body.

The chest belt should go over the shoulder and not over the neck and down diagonally across the body.

The chest belt and the lap belt must be tight, without disturbing the user. The

restraint belt strap must not be twisted during use.



**The restraint belt must never been above the armrests of the chair.**



**The seat belts must be adjusted firmly to the user. The chest belt should go over the shoulder and not over the neck.**

**Note:**

The 3 points belt in a vehicle must be set under the armrests and get around the front armrests brackets.

See below the correct position of the 3 points seat belt.



## **Summary of standards**

### **1. IN 12184:2009 Standards for wheelchairs**

Since March 2010, the revision of the standard EN 12184:2009 wheelchairs entered into force. This standard stipulates that the manufacturer of a wheelchair may not allow for the transportation of his wheelchair in a vehicle only if the wheelchair has successfully passed the crash test in accordance with ISO 7176-19.

### **2. ISO 7176-19 Standards for crash tests**

The crash test for wheelchairs incorporates the principles of collision test of already applied in the automotive industry. The wheelchairs are subject to collision tests at a speed of 48 km/h and a deceleration of impact of 20 g. the anthropomorphic dummy, maximum weight of 75 kg (54 kg for children). Until this day, only frontal impacts were simulated for the wheelchairs.

### **3. ISO 10542-2 Wheelchairs Fastening system and occupant restraint systems**

There is a few versions for the systems of attaches to wheelchairs and occupant restraint, conform to the ISO standard 10,542. The seat is secured with straps, hooks, carabiners, quick couplers and other anchoring devices. The seat attachment system and occupant restraint systems are also subject to crash tests. To do this, a chair said "substitution" is used. With this system, particular attention is given to the weight to retain (weight of seat + weight of the user). Ensure that the attachment system for the wheelchair is dimensioned for this weight.

(Empty Weight of the Magix is 172Kg with batteries)

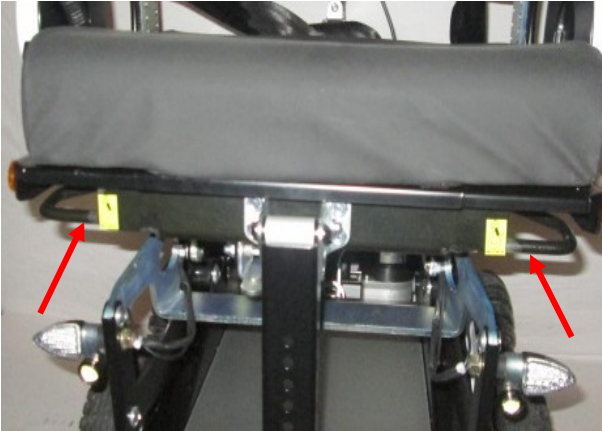
This section provides information on the anchor points for the wheelchair Magix approved in accordance with the ISO standard 7176-19.





To be transported in a car, the wheelchair is equipped with 4 anchor points conform to the Standard ISO 7176-19 indicated by the yellow hook. (At the front under the ends of the base plate, at the rear under the turn signal). These attachment points are used to lock the wheelchair safely in the event of an accident.

**Front:**



**Rear:**



**Note:** The user must ensure that the vehicle used for the transport has all the necessary requirements.



**Do not disengage the wheelchair motor**

## DAHL Docking station (Quick Attachment)



The wheelchair can also be equipped with the station of stowage fast DAHL allowing its blocking without the assistance of a third person in many vehicles tested. Your dealer is at your disposal for the information adequate (see first page for coordinates).



**Find out if the vehicle has been tested for this fixation.**

### **Rail:**

The double ramps are not recommended for loading the Magix . However in case of use of these double ramps , it is necessary to ensure that they are sufficiently wide enough and close, so that they are located under the casters anti rocker and that these casters can take support on the ramps. When using ramps there is a danger of tipping backwards if the wheels cannot take support on the ramps.

### **Caution:**



**When using ramps, it is necessary to ensure that they are wide enough and located under the casters anti rocker. Danger of tipping if the casters cannot take support on the ramp.**

**19.0 Recycling** the wheelchair will be picked up free, by the reseller and/ or by the manufacturer and recycled in a professional manner.

## 20.0 Trouble shooting

Each problem has its origin. The table below will help the user to analyze and possibly to be rectify the problem before contacting the dealer:

### 20.1 Error codes

Problem	Description	Solution and/or cause
	Control cannot be on	<ol style="list-style-type: none"> <li>1 The fuse is disconnected</li> <li>2 Discharged batteries</li> <li>3 Defect cable or improper connection</li> </ol>
Wheelchair not working	The wheelchair control is turned on, but not working	<ol style="list-style-type: none"> <li>1. Charger is connected</li> <li>2. Motors are in free mode wheels(see10.0)</li> <li>3. Control is in mode anti-start</li> <li>4. The seat adjustment is preselcted (see 7,8)</li> <li>5. The lift is in the hight position and/or the seat or the backrest are too tiltedtoward relative to the height. Down little bit the lift and/or reduce the tilt on the seat or the backrest forward</li> <li>6. The backrest is folded on the seat base and the actuator attachment of the cylinder is tilted rearwardly. Switches the lower attachment backrest cylinder forward(see 6.12)</li> </ol>
	The wheelchair doesn't fallow the joystick direction. He does what he wants	<ol style="list-style-type: none"> <li>1. Stop using and call the reseller</li> </ol>
Drive very slow	The wheelchair is driven but very slowly, at reduced speed	<ol style="list-style-type: none"> <li>1. The seat height is adjusted too high. Lower the seat</li> <li>2. The seat or the backrest are too tilted toward. Reduce the tilt</li> </ol>

## 20.2 Error table for control R-NET

Error Code	Translation	Solution and/or cause
Joystick Error	Error of the joystick	Do not move the joystick during ignition
Low Battery	Discharged Battery	Check batteries and cables / eventually replace the batteries
High Battery	Battery too high	Let get the batteries a rest
M1 Brake Error	Engine 1 defective brake	Check cable connections/ engine off
M2 Brake Error	Engine 2 defective brake	Check cable connections / engine off
M1 Motor Error	Engine 1 defective	Check cable connections / engine off
M2 Motor Error	Engine 2 defective	Check cable connections / engine off
Inhibit Active	Active Blocking	Choose other seat adjustments to resolve the blockage / control of the installation
Jstick Cal Error	Joystick calibration error	Repeat the calibration of the joystick / engine off
Latched Timeout	Reset	Delete the info with a new startup
Left Lamp Short	Short-circuit left light	Check the cable connections
Right Lamp Short	Short-circuit right light	Check the cable connections
L Ind Lamp Short	Short-circuit left turn	Check the cable connections
R Ind Lamp Short	Short circuit flashing right	Check the cable connections
Over-current	Over Current	Check the cable connections to cylinders
Overtemp. (Acts)	Overheating (movement)	Let cool the ISM / check the installation of the cylinders, excessive power consumption
Overtemp. (Lamps)	Overheating (lighting)	Let cool the ISM / check the lighting installation, excessive power consumption

Memory Error	Memory Error	Restart until the modules will disconnect and the error disappear
PM Memory Error	Error of electronic memory	Reprogram the electronic
Bad Cable	Error connecting cables	Check the cable connections
Bad Settings	Incorrect programming	Look for errors in the PC programming
Module Error	The module error	Check cable connections / engine off
System Error	System Error	Restart until the modules will disconnect and the error disappear
SID Detached	SID disconnected	Check cable connections and SID
User Switch Detached	Switch disconnected suppl.	Check cables connections and switch suppl.
Gone to Sleep	Standby Mode	Restart

## 20.3 Error table for VR -2

Number of diodes flashing on the load indicator	Cause	Solution
1	Batteries discharged or bad connection	Check batteries and cables / eventually replace the batteries
2	Error left motor connector	Check the connectors
3	Short-circuit left motor	Check the connectors
4	Error right motor connector	Check the connectors
5	Short-circuit right motor	Check the connectors
6	2 Lock active	Choose other settings of the seat to unlock / check the installation
7	Joystick error	Check cable connections and center the joystick / restart
8	Internal error in the command	Restart until the modules will disconnect and the error will disappear
9	Brake Error left and/or right	Check cables and brakes
10	Batteries Charge too high	Let the batteries rest
7 And speed diodes	Communication Error	Check the cable connections
0 AND 2 Cylinders diodes	Short circuit actuators	Check cable connections to the actuators
0	Current Limit Exceeded	The electronics has been overloaded, restart
0	Temperature Limit Exceeded	Let cool the electronics, restart

## 20.4 Error codes charger

Errors	Cause	Solution
Only the orange diode is on	The charger is not connected to the batteries	Check connections
The red led flashes	Batteries connected incorrectly (check the polarity)	Connect the batteries in the correct order
The red LED remains on	Voltage too low, defective batteries	Replace the batteries

## 21.0 Technical Data

Maximum mass of the occupant (dummy mass ISO) 140kg

### The Magix complies with the following standards:

- Requirements and test methods for static resistance, the resistance to shocks and the resistance to fatigue following 7176-8.
- Power Systems and wheelchairs electric control - Requirements and test methods according to ISO 7176-14.
- Climate test in accordance with ISO 7176-9.
- Requirements for resistance to ignition of padded parts in accordance with ISO 7176-16.

<b>Model / designation</b>	<b>MAGIX</b>
Class of device:	1
Distance:	Approx. 30 - 35 km on flat ground
Speed:	6 Km/h / 10 km/h
Raising/lowering:	17 % On hard ground
Weight:	Approx. 172 Kg (depending on equipment)
<b>Dimensions:</b>	
Total length without legrest	92 CM (36")



Total length with legrest	107-130 CM (42''-51'')
Total width	60 CM (23'')
Total height minimum with backrest	93 CM (36 5/8'')
Minimum height backrest folded	66 CM (26'')
<b>Seating Dimensions</b>	
Height of the seat cushion	43 To 78 CM (without cushion) ( 17''-30 ¾'')
Seat width between armrests	24 To 55 CM (9 ½''-21 ¾'')
Seat depth	28 To 50 CM by 2 steps (11''-19 ¾'')
Seat Angle tilt	variant, possible between -6° and +32°
Backrest Tilt	variant, possible between 87° and 145°
Armrests Height	22.5 To 33 CM (from the base plate) ( 8 7/8''-13'')
Backrest Height	50 TO 54CM +12 CM with option (from the base plate) (11''-21 ¼'')
Turning Radius with footrest	55 CM (21 ¾'')
Ground Clearance	8.5 CM (3 3/8'')
<b>Central Wheels</b>	Tires 2.5 -6, pressure between 3 and 3.5 Bar
<b>Front and Rear Wheels</b>	Omni-directional, diameter 28 cm polyurethane bandage cut
<b>Batteries, operating temperatures</b>	2 X 12 V DC 80 Ah/ 20h, AGM type without maintenance, -15 C to + 40 C
<b>Light bulbs, headlights and Turn Signals</b>	LED 12 V

<b>Drive Motors</b>	<b>AMT Schmid GmbH &amp; Co. KG</b> 24 VDC with electromagnetic brake 6 Km/h = 300 Watt 3000 rpm 23.8 /1 10 Km/h = 350 Watt 4800 rpm 23.8 /1
<b>Brakes</b>	To Electromagnetic power outage
<b>Control Element</b>	<b>PG Drives Technology Ltd</b> VR2 90A or R-Net 120A