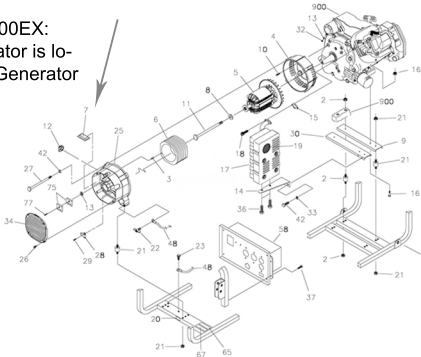


How To Remove & Install 84132GS Power Regulator

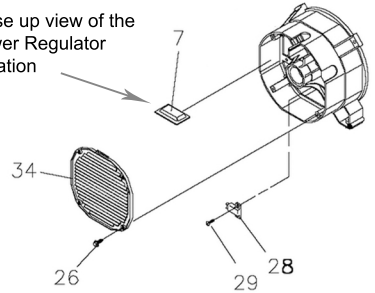
Removing and installing the 84132 Power regulator in your generator is an easy task. This Power Regulator is used on some Generac, Briggs & Stratton, Craftsman, Snapper, Murray, and Lowes model generators. When this Power Regulator fails, the generator will commonly have 'No Charging' issues.

1) Identify location of the Power Regulator (The Generator Head Unit (Alternator) may differ in appearance from model to model, but the location of the Power Regulator remains the same.

Example show 7000EX:
The Power Regulator is located behind the Generator Head cover plate



Close up view of the Power Regulator Location



2) Turn off generator and unplug any external loads to generator.

3) Locate generator end housing cover (34) and unscrew four bolts (26) that secure the housing cover. Remove housing cover.

4) Locate the Power Regulator (7) and remove the three wire plug.

5) Remove the two (usually Red and Blue) quick disconnect plugs next to the 3 wire plug that you just removed. (take note of which color wire goes where)

6) Disconnect the two (Black and White) wires that lead to the brush assembly (28). (take note of which color wire goes where)

7) Remove the Power Regulator by sliding it towards you out of the track that it lies in.

8) Re-install the new Power Regulator in the reverse order.

Note: There is a Trimmer Resistor on the Control Board located usually in the control panel that can fine tune the output voltage of the generator.
(Turn left to Increase voltage, Turn right to decrease voltage)

If you have any questions, please email to info@fintechmfg.com.

Visit our e-store at fintechmfg.com if you need to purchase a new control board for your generator.