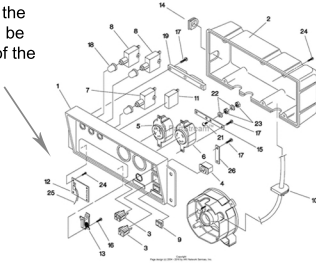


# How To Remove & Install 83970 - RRLD Control Board

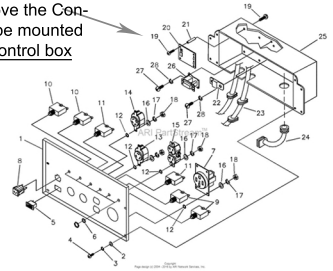
Removing and installing the 83970 control board in your generator is an easy task. This control board is used on some Generac, Briggs & Stratton, Craftsman, Snapper, Murray, Lowes model generators. When this control board fails, they will commonly have Idle control and/or no charging issues.

1) Identify what style generator you have (Control panel housing and location of the Control Board will differ, but the hook-up of the Control Board will be the same.

4000(E)XL and below the Control Board #12 will be mounted to the back of the front panel



5500(E)XL and above the Control Board #20 will be mounted to the back of the control box



- 2) Turn off generator and unplug any external loads to generator.
- 3) Remove generator end housing cover and locate the regulator, disconnect the three wire harness plug from the regulator that leads up to the panel.
- 4) Remove the mounting screws from the front panel housing.
- 5) Lift the panel off the generator and locate the control board using the example above.
- 6) Disconnect the three wires connected to the panel taking note of their locations. (Blue from the circuit breaker, Green from ground, and White from the idle switch)
- 7) On the Control Board unplug the five wire terminal that leads from the engine harness and the two spade terminal that lead from the current sense coil.
- 8) Remove the mounting screw and lift the Control Board and remove it.
- 9) If not supplied, cut the grommets on the old control board with a utility knife or wire cutters and install them on the new board. (Cut the grommet from the hole to edge, so it can be opened and added to new board.)
- 10) Re-install the new Control Board in the reverse order.

**Note:** The Trimmer Resistor on the Control Board is preset to the proper voltage there is no need to adjust this Trimmer. (If it does need to be adjusted, turning the trimmer counter-clockwise increases voltage and clockwise decreases voltage. Voltage is set at 120VAC

*If you have any questions, please email them to [info@fintechmfg.com](mailto:info@fintechmfg.com).*

*Visit us online at [fintechmfg.com](http://fintechmfg.com) if you need to purchase a new control board for your generator.*