

# DALKEITH

POLL HEREFORDS  
& HEREFORDS

AUCTIONS PLUS ONLINE SALE ONLY



Lot 4 Dalkeith Prince P041

JULY 2020 HEREFORD GROUP BREEDPLAN



CE Dir	CE DTRS	GL	BWT	200D	400D	600D	MILK	SS	EMA	RIB	RUMP	IMF
3.2	2.7	-1.3	5.1	44	67	97	12	2.7	3.4	0.9	1.2	0.6
46%	38%	76%	74%	69%	70%	72%	53%	77%	52%	56%	60%	55%

SSR	176
NSR	163
SBM	176
NBT	124

50th Annual Spring Sale



THURSDAY 10th SEPTEMBER 2020

COMMENCING AT 1.30pm





**P136 Lot 2**



**P093 Lot 3**



**P069 Lot 5**



**P097 Lot 6**



# DALKEITH

**POLL HEREFORDS  
& HEREFORDS**

↓ Offering ↓

**32 2 YR OLD POLL HEREFORD BULLS 32**

(ALL BULLS USED AS YEARLINGS AT DALKEITH)

## 50th Annual Spring Sale



**THIS AUCTION IS AN  
AUCTIONS PLUS ONLINE SALE ONLY  
WHICH WILL RUN FROM 1.30pm TO 2.30pm.**



**HERD HEALTH STATUS:** 3 x 7-1, Vibrio, Pesti Virus Vaccines - All bulls have 3 doses JBAS 7

**SALE STARTING TIME: 1.30pm**

**CONTACTS:** Antony Martin (02) 63 76 4624 ah  
0427 761 123 mob  
Charlie Martin (02) 63 76 4606  
0427 649 980 mob  
Damon Soster (02) 63 76 1159 ah  
Troy Rose (02) 63 76 4623  
Selling Complex (02) 63 76 1123  
(02) 63 76 1149 fax

**AGENTS:** Milling Stuart Pty Ltd Dunedoo  
(02) 63 75 1009 work  
(02) 63 75 1528 fax  
Angus Stuart 0427 751 009 mob  
Jamie Stuart 0427 467 322 mob  
Paul Dooley (0458) 662 646 mob  
Elders Pastoral (Mudgee)  
Phill Davis 0429 453 710 mob  
Jason Pearce 0438 144 702 mob  
Brian Kennedy 0427 844 047 mob

**WEB:** [dalkeithpollherefords.com.au](http://dalkeithpollherefords.com.au) **EMAIL:** [charlie@dalkeithpollherefords.com.au](mailto:charlie@dalkeithpollherefords.com.au)



## **POLL HEREFORDS & HEREFORDS**

Welcome to Dalkeith's 50th Annual Bull Sale. Thank you for taking the time to read this. What a change in season this year has been, just add water and grass will grow. The previous 5 years have been very tough for all farming in Australia. Mother Nature has thrown everything at us (which shows that women rule the world).

Because of this extended drought we have had to make some very tough & hard decisions; we have had to destock significantly so therefore sadly we will not be putting up any females in this year's sale. We currently are in a rebuilding process. This year we have Calved 60 mixed age Stud Cows and 60 2&3yr Old Stud Heifers. To take a positive out of this drought, hopefully the females that we have kept to rebuild from should be the cream of the crop. There are some pretty handy calves on the ground this year that will make an extraordinarily strong group of sale bulls for our 2022 sale. We also have retained the absolute best 28 2019 drop bulls for sale in 2021.

2020 has given everybody a challenge: We have made the decision due to Covid 19 that we will not hold a physical on property bull sale but will hold an ONLINE AUCTIONS PLUS SALE INSTEAD.

There are 32 X 2yr Old Polled Hereford bulls for sale this year. It is amazing how much 'doing ability' these bulls have. They have never been fed any grain or pellets in their life; they have been fed hay intermittently. All bulls that have been put up for sale at Dalkeith since 1997 have been joined as yearlings as our herd bulls for the Commercial & Stud operation. Since that time, we have not had to refund any bulls for breakdowns. All bulls are run as one mob from weaning to sale day (except while they are joined). This takes a lot of the guess work out of trying to buy a bull - 'what you see is what you get'. "Darwin's Law" is put in place here, the bulls that have better 'doing ability'-basic survival instincts are the bulls that make the sale team (it must be noted that they have had different joining times). We have been weighing every stud calf at birth for the last 10 years & you will notice again this year we have put in the actual birth weights of each bull into the Catalogue to aid buyers with selection. We believe that Gestation Length (GL) also has a huge bearing on calving issues. We have put the number of days each bull is born early (this has been calculated on a 283 Day Gestation Length). Please note that with ET bred Bulls; - the Recip Dam has a bearing on the Gestation Length. There are no Bulls in the sale assisted at birth. All calves & cows that are assisted at birth in the Stud are culled.

We believe we have set up management systems second to none throughout our operation that you, as a cattle producer can have confidence in buying Dalkeith bulls that will meet your needs, - because we have got the fundamental breeding basics right.

2020 Is supposed to be our 50th on property bull sale but due to our change of sale structure we will celebrate 50 years in the next year or 2, we hope.

Please contact Ant on 6376 4624 or 0427 761123 to organise inspections of the Sale bulls.

Please check out the newly rebuilt website [www.dalkeithpollherefords.com.au](http://www.dalkeithpollherefords.com.au)





### Can't make the sale?

*Purchase online in eight simple steps!*

*Log on to AuctionsPlus and bid on your phone, tablet or computer.*

Contact AuctionsPlus on (02) 9262 4222  
or email [studsales@auctionsplus.com.au](mailto:studsales@auctionsplus.com.au)  
or [www.auctionsplus.com.au](http://www.auctionsplus.com.au)

Check us out on:    

- 1 REGISTER ONLINE**  
Free once off registration for all auctions.
- 2 COMPLETE BUYER INDUCTION**  
The buyer induction will help you understand the roles and responsibilities of everyone on the AuctionsPlus system.
- 3 VIEW CATALOGUE**  
View photos, videos, pedigrees and more.
- 4 ENTER AUCTION**  
Log into the auction anytime, anywhere and bid on your mobile, tablet or computer.
- 5 AUTO BID**  
Can't stay for the whole sale? Set your maximum bid on the lot that you want to purchase and let the computer bid for you.
- 6 CONTACT SELLING AGENT**  
If successful, contact selling agent to arrange payment and delivery. The agent contact details will be available in the catalogue header.
- 7 PAYMENT**  
Via the selling agent's terms and conditions.
- 8 DELIVERY**  
Arrange transport of livestock at your expense.

# EXPLANATORY NOTES OF EBV'S

The EBVs contained within this catalogue can be validly compared with other Hereford GROUP BREEDPLAN EBVs in other herds. These EBVs cannot be used to compare animals of another breed.

## ESTIMATED BREEDING VALUES (EBVs)

An animal's breeding value is its genetic merit, half of which will be passed on to its progeny. While we will never know the exact breeding value, for performance traits it is possible to make good estimates. These are called Estimated Breeding Values (EBVs). The EBV is therefore the best estimate of an animal's genetic merit for that trait. EBVs are expressed as the difference between an individual animal's genetics and the genetic base to which the animal is compared.

## ACCURACY

An accuracy value is presented with every EBV and gives an indication of the amount of information that has been used in the calculation of that EBV. The higher the accuracy, the lower the likelihood of change in the animal's EBV as more information is analysed for that animal or its relatives.

Accuracy Range	Interpretation
Less than 50%	The EBVs are preliminary. EBVs in this range will have been calculated based on very little information. These EBVs could change substantially as more direct performance information becomes available on the animal.
50 – 74%	The EBVs are of medium accuracy. EBVs in this range will usually have been calculated based on the animal's own performance and some limited pedigree information.
75 – 90%	The EBVs are of medium-high accuracy. EBVs in this range will usually have been calculated based on the animal's own performance coupled with the performance for a small number of the animal's progeny.
90% and above	The EBVs are a high accuracy estimate of the animal's true breeding value. It is unlikely that EBVs will change considerably with addition of more progeny data.

## CALVING EASE

**Calving Ease EBVs** are based on calving difficulty scores, birth weights and gestation length information. More positive EBVs are favourable and indicate easier calving.

**Direct:** Direct calving ease indicates how this animal influences the birth of its progeny.

**Daughters:** Calving Ease-Daughter's indicates how well the animal produces daughters that have easier calving.

## BIRTH

**Gestation Length:** The GL EBV (days) is based on AI records. Lower (negative) GL EBVs indicate shorter gestation length and generally easier calving.

**Birth Weight:** The Birth Weight EBV (kg) is based on the measured birth weight of animals, adjusted the dam age. The lower the value, the lighter the calf at birth & the lower the likelihood of a difficult birth. This is particularly important when selecting sires for use over heifers.

## FERTILITY

**Scrotal Size:** The SS EBV (cm) is an indicator of male fertility in regards to semen quality and quantity. Higher (positive) EBVs indicate higher fertility. SS is also positively associated with female fertility.

**Days to Calving:** The DC EBV (days) is an indicator of female fertility based on the time between a cow's first exposure to a bull and when she subsequently calves. Cows that calve late in the season or fail to calve are penalised. This is more useful as a sire trait. Lower (negative) EBVs are preferred indicating shorter days to calving for the sire's daughters.



## **GROWTH**

**Milk:** 200-Day Milk EBV (kg) is an estimate of an animal's milking ability. For sires, this EBV is indicative of their daughter's milking ability as it affects the 200-day weight of their calves.

**200-Day Growth:** The 200-Day EBV (kg) is calculated from the weight of animals taken between 80 and 300 days of age. Values are adjusted to 200 days and for dam age. This EBV is the best single estimate of an animal's genetic merit for growth to early ages.

**400-Day Weight:** The 400-Day Weight EBV (kg) is calculated from the weight of progeny taken between 301 and 500 days of age, adjusted to 400 days and for dam age. This EBV is the best single estimate of an animal's genetic merit for yearling weight.

**600-Day Weight:** The 600-Day Weight EBV (kg) is calculated from the weight of progeny taken between 501 and 900 days of age, adjusted to 600 days and for dam age. This EBV is the best single estimate of an animal's genetic merit for growth beyond yearling age.

**Mature Cow Weight:** The Mature Cow Weight EBV (kg) is an estimate of the genetic difference in cow weight at 5 years of age. Smaller or more moderate EBVs are generally more favourable.

## **CARCASE**

**Carcase Weight:** The Carcase Weight EBV (kg) estimates the genetic difference in carcase weight at a standard age of 650 days.

**Eye Muscle Area:** The EMA EBV (cm<sup>2</sup>) estimates genetic differences in eye muscle area at the 12/13th rib site of a 300kg dressed carcase. More positive EBVs indicate better muscling on animals.

**Rib Fat:** The Rib Fat EBV (mm) estimates the genetic differences in fat depth at the 12/13th rib in a 300kg dressed carcase. More positive EBVs indicate more subcutaneous fat and earlier maturity.

**Rump Fat:** The Rump Fat EBV (mm) estimates the genetic differences in fat depth at the P8 site of a 300kg dressed carcase. More positive EBVs indicate more subcutaneous fat and earlier maturity.

**Retail Beef Yield %:** The RBY% EBV (%) represents total (boned out) meat yield as a percentage of a 300kg dressed carcase. A more positive EBV indicates higher percentage yield for the 300kg carcase size.

**Intramuscular Fat %:** The IMF% EBV (%) is an estimate of the genetic difference in the percentage of intra-muscular fat at the 12/13th rib site in a 300kg carcase. Depending on market targets, larger more positive values are generally more favourable.

## **SELECTION INDICES**

**Supermarket:** The Supermarket Index estimates the genetic differences between animals in net profitability per cow joined for an example commercial herd targeting the domestic supermarket trade. Steers are either finished on grass or grain (eg 50-70 days). Steers are assumed marketed at 450kg live weight (250kg HSCW and 12mm P8 fat depth) at 17 months of age. Daughters are retained for breeding. In response to industry feedback regarding eating quality and tenderness, a small premium has been placed on marbling.

**Grass Fed Steer:** The Grass Fed Steer Index estimates the genetic differences between animals in net profitability per cow joined for an example commercial herd targeting pasture finished steers. Steers are assumed marketed at 600kg live weight (330kg HSCW and 8mm P8 fat depth) at 23 months of age. Daughters are retained for breeding. In response to industry feedback regarding eating quality and tenderness, a small premium has been placed on marbling.

**Grain Fed Steer:** The Grain Fed Steer Index estimates the genetic differences between animals in net profitability per cow joined for an example commercial herd targeting pasture grown steers with a 125day feedlot finishing period for the grain fed markets. Steers are assumed marketed at 600kg live weight (330kg HSCW and 20mm P8 fat) at 20 months of age. Daughters are retained for breeding. There is a significant premium if steers reach a marble score of 2 or greater.

**EU:** The EU Index estimates the genetic differences between animals in net profitability per cow joined for an example commercial herd targeting pasture finished steers for the EU market. Steers are assumed marketed at 620kg live weight (340kg HSCW and 14mm P8 fat depth) at 24 months of age. Daughters are retained for breeding. There is no marbling requirement.

The Hereford GROUP BREEDPLAN Estimated Breeding Values contained in this Sale Catalogue were compiled by the Agricultural Business Research Institute (ABRI) from data supplied by the breeders. Neither Herefords Australia Limited nor the ABRI oversee or audit the collection of the data.

# The “Completeness of Performance” Herd Rating System

The “Completeness of Performance” herd rating system assesses the quantity of pedigree and performance information that has been submitted to BREEDPLAN by an individual seedstock herd.

While ultimately EBV accuracy values provide an indication of the reliability of an animals EBV’s, one of the key factors underpinning the accuracy of EBV’s is the quantity of performance information that has been recorded with BREEDPLAN by a herd.

The star rating for a herd is calculated based on the proportion of calves within the herd born in a fixed five year period that have performance recorded for each trait. Different criteria are used within each individual breed depending on the traits for which EBV’s are calculated within the breed. Each herd receives a star rating on a 0 – 5 scale (including half stars) that summarized the relative “completeness” of their performance information.

Following is a description of each star rating:

Star Rating	Description
<b>5</b>	Herds with a star rating of “5” are gold standard. They are considered to be recording “complete” performance information with BREEDPLAN for all animals across all traits for which EBV’s are available.
<b>4 or 4.5</b>	Herds with a star rating or “4” or “4.5” are silver standard. They are considered to be recording comprehensive performance information with BREEDPLAN for most animals and traits, but are recording less performance than a 5 star herd.
<b>3 or 3.5</b>	Herds with a star rating of “3” or “3.5” are considered bronze standard. They are considered to be recording performance information with BREEDPLAN for a reasonable number of traits or animals, but are recording less performance information than a 4 or 5 star herd.
<b>2.5 or less</b>	Herds with a rating of “2.5” or less are recording information with BREEDPLAN but not for all animals or traits. They are recording less performance information than a 3, 4 or 5 star herd.



**P132 Lot 8**



# Outback PRESS.

We Create & Print:

**Coolah District**  
*Home of the Black Stump*  
Diary

**Dunedoo District**  
*Home of the Black Swan*  
Diary

**Merrivale District**  
*Home of the Pony Club*  
Diary

Contact us for  
advertising

For all your Advertising, Printing & Graphic Needs



**27,000 HITS**  
PER MONTH  
ON OUR WEBPAGE

**ARCHIVED STATE &  
NATIONAL LIBRARIES OF  
AUSTRALIA**

**10,000 COPIES**  
DISTRIBUTED BY  
AUSTRALIA POST PER MONTH

## We Print and Design:

- Local Newspapers
- NCR Books
- Order Books
- Tax Invoice Books
- Receipt Books
- Agricultural Show Books
- Sale Catalogues
- Letterheads
- Envelopes
- Brochures
- Mailers
- Business Cards

54 Binnia Street, Coolah, NSW 2843

Ph: (02) 6377 1950

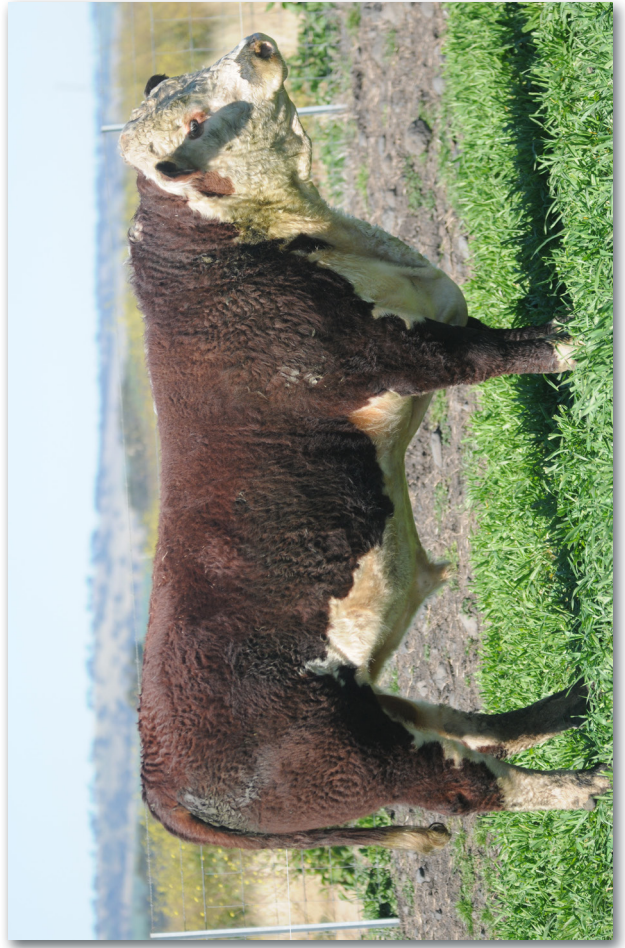
Mob: 0457 719 510

[coolahdiary@outbackpress.com.au](mailto:coolahdiary@outbackpress.com.au)





**P069 Lot 5**



**P222 Lot 13**



**P002 Lot 1**



**P036 Lot 11**





**P134 Lot 15**



**P124 Lot 17**



**P122 Lot 14**

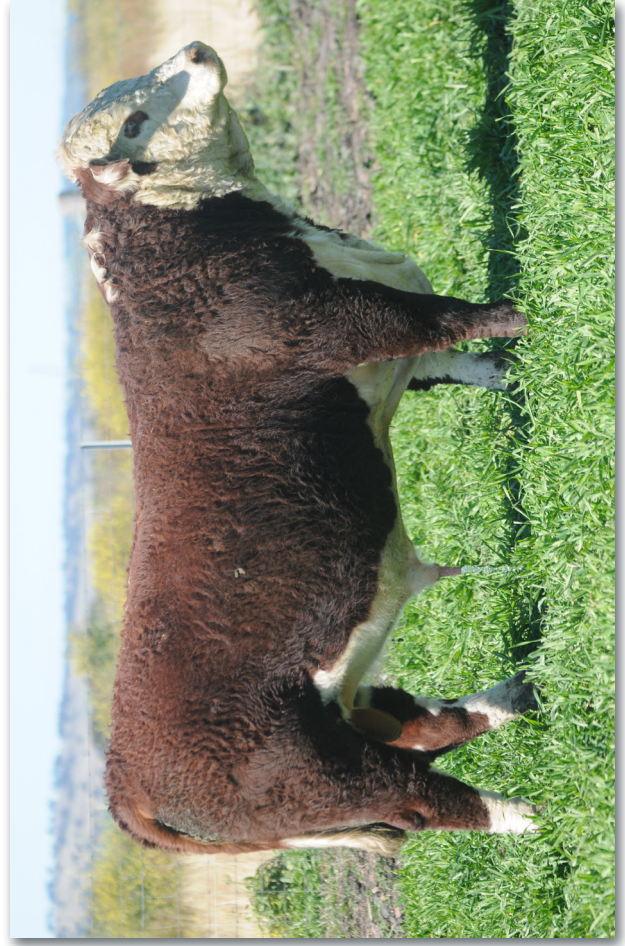


**P233 Lot 16**





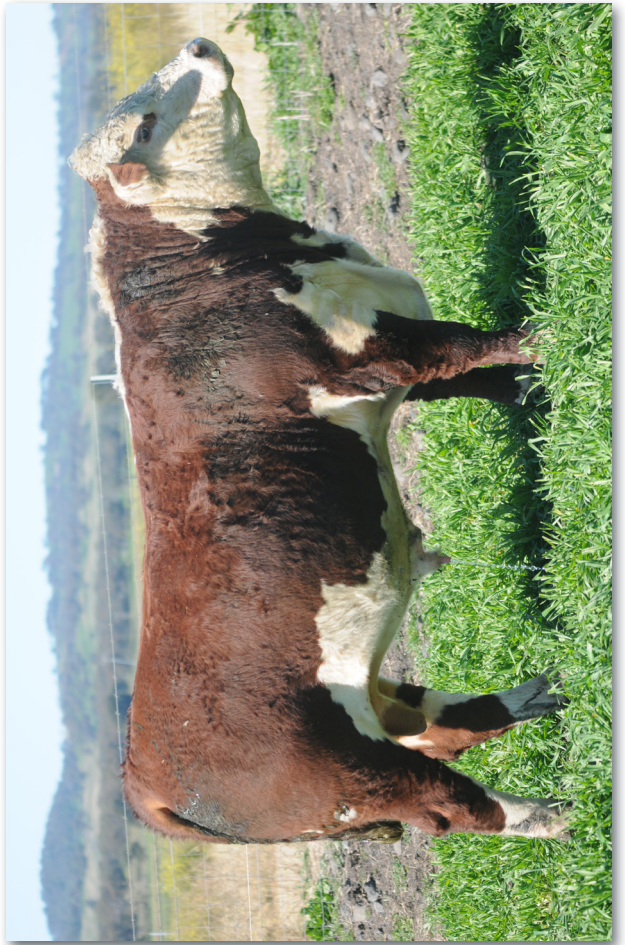
**P232 Lot 20**



**P088 Lot 23**



**P303 Lot 19**



**P108 Lot 22**





**P219 Lot 25**



**P220 Lot 28**



**P107 Lot 24**



**P113 Lot 27**



**Lot 1 DALKEITH PROMOTER P002** Born: 24/03/2018 EP: 100 / 90 Tattoo P002  
 CANNAWIGRA S5 BATMAN (X08) Birth Weight: 43.0 Polled  
 CANNAWIGRA COMMANDER (Z51)

**Sire: MOUNTAIN VALLEY GAMBLER (G14)**  
 CANNAWIGRA ANABEL (V108)  
 MOUNTAIN VALLEY OOZY (Y45)  
 MOUNTAIN VALLEY (B44)  
 MOUNTAIN VALLEY GLITTER (Y79)  
 STUDBROOK DARTAGNION (V086)  
 OTAPAWA SPARK 3060  
 OTAPAWA SPOT (P30)  
 YALGOO ENGINEER (N95)  
 DALKEITH DIVIDEND 283 (R385)

ET Bred. Dam, Grand Dam & Great Grand Dam all used as Donors.  
 Born 12 days early.  
 Top 10% of breed for EMA EBV's.  
 Top 20% for all Growth EBV's.  
 Joined to Commercial Cows at Dalkeith for 104days.

**Dam: DALKEITH DIVIDEND 648 (G084)**  
 DALKEITH DIVIDEND 447 (X449)  
 DALKEITH DIVIDEND 283 (R385)

**JULY 2020 HEREFORD GROUP BREEDPLAN**

BREEDPLAN	CE Dir	CE DTRS	GL	BWT	200D	400D	600D	MILK	SS	EMA	RIB	RUMP	IMF
	-0.8	-6.6	-0.7	6.3	38	64	92	11	1.3	5.4	0.1	0.2	0.3
	50%	43%	64%	74%	70%	70%	72%	60%	73%	52%	56%	59%	57%

SSR	129
NSR	116
SBM	124
NBT	102

Purchaser..... Price.....

**Lot 2 DALKEITH PELICAN P136** Born: 6/05/2018 EP: 90 / 100 Tattoo P136  
 DEBARRY CALGARY (C58) EBBX CALGARY (Y42) Birth Weight: 40.0 Polled  
 DEBARRY DALLAS (X75)

**Sire: ALLENDALE ANZAC (H175)**  
 ALLENDALE NATIONAL (W168)  
 ALLENDALE DAWN (T60)  
 ALLENDALE DAWN (B22)  
 CAPETHORNE HOT SHOT 03 22  
 MATARIKI HOLY-SMOKE 0390  
 MATARIKI GIRLIE 00323

Top 10% of breed for IMF% EBV's.  
 Top 20% of breed for 400day & SS EBV's.  
 2 Joinings. 1st joining to Commercial 2yr Old Heifers for 45days & 2nd joining to Barbs Cows for 104days.

**Dam: DALKEITH MARINDA (K276)**  
 DALKEITH (Y103)  
 DALKEITH MARINDA 375 (D155)  
 DALKEITH MARINDA 253 (Z054)

**JULY 2020 HEREFORD GROUP BREEDPLAN**

BREEDPLAN	CE Dir	CE DTRS	GL	BWT	200D	400D	600D	MILK	SS	EMA	RIB	RUMP	IMF
	-2.5	-3.0	2.3	4.6	33	64	83	8	2.6	2.9	0.8	1.2	1.2
	49%	41%	75%	74%	70%	70%	72%	56%	77%	53%	56%	60%	55%

SSR	115
NSR	103
SBM	106
NBT	84

Purchaser..... Price.....

**Lot 3 DALKEITH PERFORMANCE P093** Born: 25/04/2018 EP: 99 / 100 Tattoo P093  
 YAMBRO CONRAD (B88) YAMBRO VELOCITY (X78) Birth Weight: 39.0 Polled  
 YAMBRO SPOT (W123)

**Sire: DALKEITH MACHINE (M051)**  
 YALGOO ENGINEER (N95)  
 DALKEITH INNOCENT 3 (P096)  
 DALKEITH INNOCENT 43 (T153)  
 CAPETHORNE HOT SHOT 03 22  
 MATARIKI HOLY-SMOKE 0390  
 MATARIKI GIRLIE 00323

Great Grand Dam was a Donor. Heifers 1st calf.  
 Top 5% of breed for all Growth figures, top 10% for SS & all Indexes, top 15% for IMF% EBV's.  
 2019 used as Stud Sire. 17 calves on the ground with an overall actual average birth weight of 44.6kgs, (8 x 3yr Old Heifers ave birth weight of 43.1kgs & 9 x Cows ave birth weight of 46kgs).  
 Potential Stud Sire.

**Dam: DALKEITH DIVIDEND (L228)**  
 GRASSMERE SPARK 555  
 DALKEITH DIVIDEND 652 (H081)  
 DALKEITH DIVIDEND 541 (B251)

**JULY 2020 HEREFORD GROUP BREEDPLAN**

BREEDPLAN	CE Dir	CE DTRS	GL	BWT	200D	400D	600D	MILK	SS	EMA	RIB	RUMP	IMF
	0.9	-0.5	1.2	7.4	45	76	111	14	3.0	3.4	1.1	1.7	1.1
	44%	38%	57%	71%	66%	66%	70%	51%	75%	49%	53%	57%	50%

SSR	187
NSR	167
SBM	179
NBT	129

Purchaser..... Price.....

Breed Averages	CE Dir	CE DTRS	GL	BWT	200D	400D	600D	MILK	SS	EMA	RIB	RUMP	IMF	Practical Systems STOCKBOOK		
	1.60	1.50	-0.50	4.30	33.00	55.00	78.00	16.00	2.00	3.40	0.60	0.70	0.50	Top 10%	Top 25%	Above Av

**Lot 4 DALKEITH PRINCE P041** Born: 4/04/2018 EP: 100 / 100 Tattoo P041  
 ALLENDALE SUPERSTAR (B28) Birth Weight: 38.0 Scurred

ALLENDALE YALLARO I 2 (E25)  
 ALLENDALE FANCY (A181)  
 OKAWA COMMODORE 2076  
 ALLENDALE FANCY (C210)  
 ALLENDALE FANCY (Y98)  
 OKAWA LAIDLAW 4156  
 MONYMUSK EIFFEL TOWER 0140  
 MONYMUSK LEONORA 050091  
 MARKOWEN NO EXCUSE (A29)  
 DALKEITH RANA 71 (E218)  
 DALKEITH RANA 59 (A064)

Great Grand Dam used as a Donor.  
 Heifers 1st calf. Born 1 day early.  
 2019 used as Stud Sire. 16 calves on the ground with an overall actual average birth weight of 40.5kgs, (7 x 2yr Old Heifers ave birth weight of 37kgs & 9 x Cows ave birth weight of 43.3kgs).  
 No calves pulled.  
 Potential Stud Sire. Semen kept for in Stud use.

**Dam: DALKEITH RANA (L261)**

**JULY 2020 HEREFORD GROUP BREEDPLAN**

BREEDPLAN	CE Dir	CE DTRS	GL	BWT	200D	400D	600D	MILK	SS	EMA	RIB	RUMP	IMF
	3.2	2.7	-1.3	5.1	44	67	97	12	2.7	3.4	0.9	1.2	0.6
	46%	38%	76%	74%	69%	70%	72%	53%	77%	52%	56%	60%	55%

SSR	176
NSR	163
SBM	176
NBT	124

Purchaser..... Price.....

**Lot 5 DALKEITH PEEWEE P069** Born: 10/04/2018 EP: 100 / 95 Tattoo P069  
 YAMBRO CONRAD (B88) YAMBRO VELOCITY (X78) Birth Weight: 28.0 Polled

YAMBRO SPOT (W123)  
 YALGOO ENGINEER (N95)  
 DALKEITH INNOCENT 43 (T153)  
 DALKEITH INNOCENT 3 (P096)  
 MORGANVALE CRAMPTON (C82)  
 MORGANVALE FORSYTH (F203)  
 MORGANVALE LADY ALMOND (B310)  
 ALLENDALE PICKERING (A28)  
 DALKEITH MOONSHINE 10 (D227)  
 DALKEITH MOONSHINE 7 (X341)

Heifers 1st calf.  
 Top 20% for Scotol Size & Rib/Rump Fat EBVs.  
 2019 used as Stud Sire over Yearling Heifers.  
 5 x 2yr Old Heifers calves on the ground with an overall actual average birth weight of 38.4kgs.  
 Potential Stud Sire.

**Dam: DALKEITH MOONSHINE (M154)**

**JULY 2020 HEREFORD GROUP BREEDPLAN**

BREEDPLAN	CE Dir	CE DTRS	GL	BWT	200D	400D	600D	MILK	SS	EMA	RIB	RUMP	IMF
	5.0	0.2	1.4	4.4	30	50	70	11	2.6	3.2	1.2	1.7	0.2
	41%	33%	72%	71%	66%	66%	69%	49%	75%	48%	53%	57%	50%

SSR	131
NSR	123
SBM	137
NBT	100

Purchaser..... Price.....

**Lot 6 DALKEITH PANDORA P097** Born: 25/04/2018 EP: 100 / 100 Tattoo P097  
 CANNAWIGRA S5 BATMAN (X08) Birth Weight: 42.0 Polled

CANNAWIGRA COMMANDER (Z51)  
 CANNAWIGRA ANABEL (V108)  
 MOUNTAIN VALLEY OOZY (Y45)  
 MOUNTAIN VALLEY (B44)  
 MOUNTAIN VALLEY GLITTER (Y79)  
 SOUTH BUKALONG WALLACE 2 (Y781)  
 WIRRUNA ECHUCA (E99)  
 WIRRUNA GOLDEN VANITY (C32)  
 TYCOLAH UP RITE (Q42)  
 DALKEITH MARINDA 344 (C042)  
 DALKEITH MARINDA 257 (Z101)

Grand Dam was a Donor. Born 4 days early.  
 Top 20% of breed for EMA EBVs.  
 2019 used as Stud Sire. 16 calves on the ground with an overall actual average birth weight of 43.2kgs, (5 x 3yr Old Heifers ave birth weight of 41.7kgs & 11 x Cows ave birth weight of 43.9kgs). No calves pulled.  
 Potential Stud Sire.

**Dam: DALKEITH MARINDA (L048)**

**JULY 2020 HEREFORD GROUP BREEDPLAN**

BREEDPLAN	CE Dir	CE DTRS	GL	BWT	200D	400D	600D	MILK	SS	EMA	RIB	RUMP	IMF
	1.3	-2.6	-0.6	5.9	33	56	82	13	1.8	4.5	0.8	1.3	0.1
	48%	41%	75%	74%	70%	70%	73%	57%	77%	53%	57%	61%	56%

SSR	135
NSR	121
SBM	133
NBT	97

Purchaser..... Price.....

Breed Averages	CE Dir	CE DTRS	GL	BWT	200D	400D	600D	MILK	SS	EMA	RIB	RUMP	IMF	Practical Systems STOCKBOOK		
	1.60	1.50	-0.50	4.30	33.00	55.00	78.00	16.00	2.00	3.40	0.60	0.70	0.50	Top 10%	Top 25%	Above Av

**Lot 7 DALKEITH PIONEER P193** Born: 24/05/2018 EP: 100 / 100 Tattoo P193  
 DEBARRY CALGARY (C58) EBBX CALGARY (Y42) Birth Weight: 42.5 Polled

**Sire: ALLENDALE ANZAC (H175)**  
 ALLENDALE DAWN (B22) ALLENDALE NATIONAL (W168) Grand Dam used as a Donor. Born 2 days early. Top 5% of breed for Scotol Size EBV's. Top 10% for IMF% EBV's. Top 15% for Gestation Length EBV's.  
 OTAPAWA SPARK 3060 STUDBROOK DARTAGNION (V086)

**Dam: DALKEITH COLLINA (J194)**  
 MOUNTAIN VALLEY COLLINA (W13) WIRANYA CARDINAL 2 (T36)  
 MOUNTAIN VALLEY COLLINA (T12)

**JULY 2020 HEREFORD GROUP BREEDPLAN**

BREEDPLAN COMPLETENESS	CE Dir	CE DTRS	GL	BWT	200D	400D	600D	MILK	SS	EMA	RIB	RUMP	IMF
	-0.1	1.1	-2.1	5.1	35	63	89	9	3.5	2.5	1.2	1.7	1.4
	50%	42%	75%	74%	70%	70%	73%	58%	78%	54%	57%	61%	56%

SSR	131
NSR	118
SBM	127
NBT	99

Purchaser..... Price.....

**Lot 8 DALKEITH PRICELESS P132** Born: 5/05/2018 EP: 90 / 100 Tattoo P132  
 YAMBRO CONRAD (B88) YAMBRO VELOCITY (X78) Birth Weight: 36.0 Polled

**Sire: DALKEITH MASTER (M096)**  
 DALKEITH INNOCENT 43 (T153) YALGOO ENGINEER (N95) Heifers 1st calf. Top 10% of breed for 200/600day Growth EBV's. Top 15% for 400day, IMF% & all Indexes EBV's. Top 20% for Scotol Size EBV's. Joined to Sara's Cows at Wongalea.  
 DALKEITH KIWI (K051) GRASSMERE SPARK 555

**Dam: DALKEITH DIVIDEND (M196)**  
 MARKOWEN LADY HURON 7 (Z48)  
 DALKEITH GIGOLO (G034)  
 DALKEITH DIVIDEND (J191)  
 DALKEITH DIVIDEND 609 (F139)

**JULY 2020 HEREFORD GROUP BREEDPLAN**

BREEDPLAN COMPLETENESS	CE Dir	CE DTRS	GL	BWT	200D	400D	600D	MILK	SS	EMA	RIB	RUMP	IMF
	3.0	2.1	0.5	5.8	41	66	96	15	2.6	2.6	0.4	0.6	1.0
	39%	32%	45%	70%	65%	66%	69%	45%	75%	47%	52%	56%	48%

SSR	163
NSR	143
SBM	165
NBT	119

Purchaser..... Price.....

**Lot 9 DALKEITH PRODUCTION P021** Born: 1/04/2018 EP: 100 / 100 Tattoo P021  
 SOUTH BUKALONG WALLACE 2 (Y781) SOUTH BUKALONG WALKER 6 (W688) Birth Weight: 39.5 Polled

**Sire: DALKEITH LUST (L070)**  
 MARKOWEN LADYBIRD (A18) MARKOWEN INVINCIBLE (X34) Grand Dam & Great Grand Dam used as Donors. Heifers 1st calf. Born 4 days early. Top 10% of breed for IMF% EBV's. Top 15% for Gestation Length & SS EBV's. Joined to Commercial Cows at Dalkeith for 104days.  
 MONYMUSK EIFFEL TOWER 0140 OKAWA LAIDLAW 4156

**Dam: DALKEITH PRUDENCE (L274)**  
 MOUNTAIN VALLEY (D11) TYCOLAH EXECUTIVE (A14)  
 MOUNTAIN VALLEY PRUDENCE (A180)

**JULY 2020 HEREFORD GROUP BREEDPLAN**

BREEDPLAN COMPLETENESS	CE Dir	CE DTRS	GL	BWT	200D	400D	600D	MILK	SS	EMA	RIB	RUMP	IMF
	1.1	3.9	-2.1	5.9	35	54	79	10	2.8	2.1	0.9	1.0	1.3
	45%	37%	73%	72%	67%	67%	71%	47%	76%	50%	54%	58%	52%

SSR	136
NSR	121
SBM	135
NBT	94

Purchaser..... Price.....

Breed Averages	CE Dir	CE DTRS	GL	BWT	200D	400D	600D	MILK	SS	EMA	RIB	RUMP	IMF	Practical Systems STOCKBOOK
	1.60	1.50	-0.50	4.30	33.00	55.00	78.00	16.00	2.00	3.40	0.60	0.70	0.50	Top 10% Top 25% Above Av



**Lot  
10**

**DALKEITH POWELL P099**

**Born: 26/04/2018 EP: 100 / 100**

**Tattoo P099**

ALLENDALE WATERHOUSE (D1) **Birth Weight: 41.0** Polled

ALLENDALE DISTINGUISHED (H52)

ALLENDALE MARLINE (X185)

**Sire: DALKEITH MAGIC (M035)**

CANNAWIGRA COMMANDER (Z51)

MOUNTAIN VALLEY MATCHLESS (G45)

MOUNTAIN VALLEY MATCHLESS (B41) Grand Dam & Great Grand Dam used as Donors.

DEBARRY CALGARY (C58) Heifers 1st calf.

ALLENDALE ANZAC (H175)

**Dam: DALKEITH DIVIDEND (L181)**


ALLENDALE DAWN (B22)

TYCOLAH CUNNAMULLA FELLA (Y59)

DALKEITH DIVIDEND 556 (C198)

DALKEITH DIVIDEND 447 (X449)

**JULY 2020 HEREFORD GROUP BREEDPLAN**

	CE Dir	CE DTRS	GL	BWT	200D	400D	600D	MILK	SS	EMA	RIB	RUMP	IMF
	-2.1	-1.0	0.1	5.2	29	49	69	8	2.0	4.0	0.5	0.8	0.7
	39%	29%	49%	71%	62%	59%	60%	42%	55%	39%	45%	48%	44%

<b>SSR</b>	<b>97</b>
<b>NSR</b>	<b>88</b>
<b>SBM</b>	<b>93</b>
<b>NBT</b>	<b>71</b>

Purchaser.....

Price.....

**Lot  
11**

**DALKEITH PEACE P036**

**Born: 5/04/2018 EP: 100 / 100**

**Tattoo P036**

ALLENDALE SUPERSTAR (B28) **Birth Weight: 47.0** Polled

ALLENDALE YALLAROI 2 (E25)

ALLENDALE FANCY (A181)

**Sire: ALLENDALE FCF BARKLY (H127)**

OKAWA COMMODORE 2076

ALLENDALE FANCY (C210)

ALLENDALE FANCY (Y98)

ALLENDALE MUSKETEER (S56)

ALLENDALE OPINION (U122)

Top 1% of breed for 200day Growth EBV's.  
Top 5% of breed for 400/600day Growth EBV's.  
Joined to Commercial Cows at Dalkeith for 104days.

**Dam: DALKEITH DIVIDEND (E046)**


ALLENDALE MARSHALL LASS (R42)

DALKEITH (Y103)

DALKEITH DIVIDEND 535 (B167)

DALKEITH DIVIDEND 415 (X5421)

**JULY 2020 HEREFORD GROUP BREEDPLAN**

	CE Dir	CE DTRS	GL	BWT	200D	400D	600D	MILK	SS	EMA	RIB	RUMP	IMF
	-2.7	1.3	-1.1	7.0	53	76	104	10	0.0	2.8	-0.5	-0.6	0.2
	47%	38%	75%	74%	69%	70%	72%	53%	78%	51%	55%	59%	54%

<b>SSR</b>	<b>139</b>
<b>NSR</b>	<b>121</b>
<b>SBM</b>	<b>137</b>
<b>NBT</b>	<b>101</b>

Purchaser.....

Price.....

**Lot  
12**

**DALKEITH PARTISAN P060**

**Born: 7/04/2018 EP: 100 / 100**

**Tattoo P060**

DALKEITH WOLLY (W163) **Birth Weight: 49.0** Polled

KURRAJONG PARK (B144)

KURRAJONG PARK WINKER (W145)

**Sire: YAVENVALE EINSTEIN (E344)**

SOUTH BUKALONG WALLACE 2 (Y781) ET Bred (Dam Donor).

YAVENVALE DOREEN (C119)

YAVANVALE DOREEN (Z446)

BOWEN WESTERN STAR (W35)

CASCADE ZIRCON (Z07)

Top 5% of breed for 400day Growth & SS EBV's.  
Top 10% of breed for 600day Growth EBV's.  
Top 20% of breed for 200day Growth EBV's.  
Joined to Commercial Cows at Dalkeith for 104days.

**Dam: MOUNTAIN VALLEY VICTORIA (C45)**


BABANKEN CUPID (V95)

WIRANYA CARDINAL 2 (T36)

MOUNTAIN VALLEY VICTORIA (V53)

MOUNTAIN VALLEY VICTORIA (P29)

**JULY 2020 HEREFORD GROUP BREEDPLAN**

	CE Dir	CE DTRS	GL	BWT	200D	400D	600D	MILK	SS	EMA	RIB	RUMP	IMF
	-5.5	-2.9	-1.3	7.8	38	72	100	15	3.5	3.6	0.4	0.5	-0.4
	48%	37%	55%	73%	68%	68%	67%	60%	63%	48%	52%	56%	54%

<b>SSR</b>	<b>125</b>
<b>NSR</b>	<b>105</b>
<b>SBM</b>	<b>113</b>
<b>NBT</b>	<b>81</b>

Purchaser.....

Price.....

Breed Averages	CE Dir	CE DTRS	GL	BWT	200D	400D	600D	MILK	SS	EMA	RIB	RUMP	IMF	<i>Practical Systems STOCKBOOK</i>		
	1.60	1.50	-0.50	4.30	33.00	55.00	78.00	16.00	2.00	3.40	0.60	0.70	0.50	Top 10%	Top 25%	Above Av

**Lot 13 DALKEITH PAN P222** Born: 26/05/2018 EP: 100 / 100 Tattoo P222  
 KURRAJONG PARK (B144) DALKEITH WOLLY (W163) Birth Weight: 49.0 Polled

**Sire: YAVENVALE EINSTEIN (E344)**

YAVENVALE DOREEN (C119)

CHESTER COMMODORE (D100)

KURRAJONG PARK WINKER (W145)

SOUTH BUKALONG WALLACE 2 (Y781)

YAVANVALE DOREEN (Z446)

OKAWA COMMODORE 2076

Born on due date.  
Top 15% of breed for Milk EBV's.

**Dam: DALKEITH DEAREST 311 (G246)**

DALKEITH DEAREST 19 (W358)

QUAMBY PLAINS FIRST DAY (U20)

YALGOO ENGINEER (N95)

DALKEITH DEAREST 163 (N318)

**JULY 2020 HEREFORD GROUP BREEDPLAN**

BREEDPLAN COMPLETENESS	CE Dir	CE DTRS	GL	BWT	200D	400D	600D	MILK	SS	EMA	RIB	RUMP	IMF
	-7.1	-1.7	-1.1	7.0	36	61	87	20	2.4	3.1	0.8	1.1	-0.1
	46%	35%	74%	74%	69%	70%	73%	58%	78%	52%	56%	60%	55%

SSR	119
NSR	96
SBM	98
NBT	62

Purchaser.....

Price.....

**Lot 14 DALKEITH PRESIDENT P122** Born: 1/05/2018 EP: 95 / 100 Tattoo P122  
 CANNAWIGRA S5 BATMAN (X08) Birth Weight: 45.0 Polled

CANNAWIGRA COMMANDER (Z51)

MOUNTAIN VALLEY (B44)

DALKEITH HITMAN (H044)

CANNAWIGRA ANABEL (V108)

MOUNTAIN VALLEY OOZY (Y45)

MOUNTAIN VALLEY GLITTER (Y79)

ALLENDALE VAGABOND (A74)

DALKEITH DIVIDEND 490 (Z320)

OKAWA COMMODORE 2076

DALKEITH DIVIDEND 530 (B032)

Great Grand Dam used as a Donor.  
Top 20% of breed for EMA EBV's.  
Joined to Commercial Cows at Dalkeith for 104days.

**Dam: DALKEITH DIVIDEND (K203)**

DALKEITH DIVIDEND 624 (G119)

**JULY 2020 HEREFORD GROUP BREEDPLAN**

BREEDPLAN COMPLETENESS	CE Dir	CE DTRS	GL	BWT	200D	400D	600D	MILK	SS	EMA	RIB	RUMP	IMF
	-1.0	-5.9	1.3	5.6	32	61	86	13	2.4	4.4	0.7	1.2	-0.3
	46%	38%	75%	74%	69%	70%	72%	54%	77%	52%	56%	60%	55%

SSR	130
NSR	115
SBM	120
NBT	90

Purchaser.....

Price.....

**Lot 15 DALKEITH PALLABAH P134** Born: 5/05/2018 EP: 100 / 100 Tattoo P134  
 ALLENDALE SUPERSTAR (B28) Birth Weight: 44.5 Polled

ALLENDALE YALLAROI 2 (E25)

**Sire: ALLENDALE FCF BARKLY (H127)**

ALLENDALE FANCY (C210)

MATARIKI HOLY-SMOKE 0390

ALLENDALE FANCY (A181)

OKAWA COMMODORE 2076

ALLENDALE FANCY (Y98)

CAPETHORNE HOT SHOT 03 22

MATARIKI GIRLIE 00323

WIRRUNA ECHUCA (E99)

MOUNTAIN VALLEY SHAMROCK (C38)

Great Grand Dam used as a Donor.  
Top 1% of breed for 200day Growth EBV's.  
Top 10% of breed for 400day Growth EBV's.  
Top 20% of breed for 600day Growth EBV's.  
Joined to Sara's Cows at Wongalea.

**Dam: DALKEITH SHAMROCK (K117)**

DALKEITH SHAMROCK (H102)

**JULY 2020 HEREFORD GROUP BREEDPLAN**

BREEDPLAN COMPLETENESS	CE Dir	CE DTRS	GL	BWT	200D	400D	600D	MILK	SS	EMA	RIB	RUMP	IMF
	-2.9	-0.2	0.8	4.9	47	69	90	10	1.4	3.0	0.9	1.5	0.6
	48%	39%	76%	74%	70%	70%	72%	52%	78%	53%	56%	60%	56%

SSR	143
NSR	133
SBM	132
NBT	92

Purchaser.....

Price.....

Breed	CE Dir	CE DTRS	GL	BWT	200D	400D	600D	MILK	SS	EMA	RIB	RUMP	IMF	Practical Systems STOCKBOOK		
Averages	1.60	1.50	-0.50	4.30	33.00	55.00	78.00	16.00	2.00	3.40	0.60	0.70	0.50	Top 10%	Top 25%	Above Av

**Lot 16 DALKEITH PENGUIN P233** Born: 27/05/2018 EP: 100 / 100 Tattoo P233  
 ALLENDALE WATERHOUSE (D1) Birth Weight: 37.0 Scurred

Days Robin Hood (H38)  
 Sire: HUNTER LAKES LANCELOT (L103)  
 HUNTER LAKES FANCY (F7)  
 CHESTER COMMODORE (D32)  
 Dam: DALKEITH DIVIDEND 662 (H219)  
 DALKEITH DIVIDEND 567 (D143)  
 ALLENDALE FANCY (U5)  
 SOUTH BUKALONG WALLACE 2 (Y781)  
 ALLENDALE FANCY (D24)  
 OKAWA COMMODORE 2076  
 QUAMBY PLAINS JESS (X102)  
 TYCOLAH CUNNAMULLA FELLA (Y59)  
 DALKEITH DIVIDEND 480 (Z526)  
 Great Grand Dam used as a Donor.  
 Top 15% of breed for Calving Ease DTRS EBV's.  
 2 Joinings. 1st joining to Commercial 2yr Old Heifers for 45days & 2nd joining to Barbs Cows for 104days.

**JULY 2020 HEREFORD GROUP BREEDPLAN**

	CE Dir	CE DTRS	GL	BWT	200D	400D	600D	MILK	SS	EMA	RIB	RUMP	IMF
	-0.7	5.0	-0.8	4.3	35	59	84	17	1.5	3.3	-0.2	0.3	0.2
	44%	34%	75%	74%	69%	69%	72%	49%	77%	51%	55%	59%	53%

SSR	139
NSR	124
SBM	138
NBT	94

Purchaser..... Price.....

**Lot 17 DALKEITH POSTMAN P124** Born: 2/05/2018 EP: 100 / 100 Tattoo P124  
 DEBARRY CALGARY (C58) EBBX CALGARY (Y42) Birth Weight: 46.5 Polled  
 DEBARRY DALLAS (X75)

Sire: ALLENDALE ANZAC (H175)  
 ALLENDALE DAWN (B22)  
 SOUTH BUKALONG WALLACE 2 (Y781)  
 SOUTH BUKALONG VICTORIA 152 (V510)  
 Dam: DALKEITH MATCHLESS (L051)  
 MOUNTAIN VALLEY MATCHLESS (D84)  
 MOUNTAIN VALLEY MATCHLESS (T56)  
 ALLENDALE NATIONAL (W168)  
 ALLENDALE DAWN (T60)  
 SOUTH BUKALONG WALKER 6 (W688)  
 CANNAWIGRA HURRICANE (Z31)  
 Grand Dam used as a Donor.  
 Top 10% of breed for IMF% EBV's.  
 Joined to Commercial Cows at Dalkeith for 104days.

**JULY 2020 HEREFORD GROUP BREEDPLAN**

	CE Dir	CE DTRS	GL	BWT	200D	400D	600D	MILK	SS	EMA	RIB	RUMP	IMF
	0.1	1.8	0.6	4.9	32	57	81	7	2.1	2.2	1.0	1.5	1.4
	49%	41%	74%	74%	70%	70%	72%	55%	77%	53%	56%	61%	55%

SSR	132
NSR	120
SBM	129
NBT	94

Purchaser..... Price.....

**Lot 18 DALKEITH PALMERSTON P292** Born: 8/06/2018 EP: 100 / 100 Tattoo P292  
 MORGANVALE FORSYTH (F203) MORGANVALE CRAMPTON (C82) Birth Weight: 45.0 Polled  
 MORGANVALE LADY ALMOND (B310)

Sire: DALKEITH MONEY (M092)  
 DALKEITH GLORY (J295)  
 MARKOWEN BROKER (B30)  
 Dam: DALKEITH MARINDA 401 (F055)  
 DALKEITH MARINDA 338 (C001)  
 CHESTER COMMODORE (D32)  
 DALKEITH GLORY 132 (Z062)  
 MARKOWEN INTRUDER (Z33)  
 MARKOWEN LADY HURON 8 (Z49)  
 DALKEITH (Y103)  
 DALKEITH MARINDA 91 (S177)  
 Great Grand Dam used as a Donor.  
 Top 15% of breed for Scotol Size EBV's.  
 Joined to Commercial Cows at Dalkeith for 104days.

**JULY 2020 HEREFORD GROUP BREEDPLAN**

	CE Dir	CE DTRS	GL	BWT	200D	400D	600D	MILK	SS	EMA	RIB	RUMP	IMF
	-1.9	-0.2	2.2	5.8	34	57	87	12	2.9	3.7	0.2	0.3	0.0
	39%	29%	56%	72%	65%	65%	67%	46%	72%	44%	48%	52%	45%

SSR	136
NSR	120
SBM	128
NBT	87

Purchaser..... Price.....

<b>Breed Averages</b>	CE Dir	CE DTRS	GL	BWT	200D	400D	600D	MILK	SS	EMA	RIB	RUMP	IMF	<i>Practical Systems STOCKBOOK</i>		
	1.60	1.50	-0.50	4.30	33.00	55.00	78.00	16.00	2.00	3.40	0.60	0.70	0.50	Top 10%	Top 25%	Above Av



**Lot**  
**19**

**DALKEITH PAMPAS P303**

**Born: 21/06/2018 EP: 100 / 100**

**Tattoo P303**

ALLENDALE WATERHOUSE (D1)

**Birth Weight: 43.5**

Polled

ALLENDALE DISTINGUISHED (H52)

ALLENDALE MARLINE (X185)

**Sire: DALKEITH MAGIC (M035)**

CANNAWIGRA COMMANDER (Z51)

Top 5% of breed for Rib/Rump Fat & EMA EBV's.  
Top 10% of breed for IMF% EBV's.  
Joined to Commercial Cows at Dalkeith for 104days.

MOUNTAIN VALLEY MATCHLESS (G45)

MOUNTAIN VALLEY MATCHLESS (B41)

STUDBROOK DARTAGNION (V086)

OTAPAWA SPARK 3060

OTAPAWA SPOT (P30)

**Dam: DALKEITH CORISANDE 135 (F108)**

BRIDGE POWERPLAY (M20)

DALKEITH CORISANDE 106 (Z171)

DALKEITH CORISANDE 81 (U143)

**JULY 2020 HEREFORD GROUP BREEDPLAN**

	CE Dir	CE DTRS	GL	BWT	200D	400D	600D	MILK	SS	EMA	RIB	RUMP	IMF
	-4.7	0.4	-0.6	5.6	34	53	74	13	1.3	5.8	1.9	2.7	1.2
	43%	35%	51%	72%	67%	67%	68%	48%	73%	47%	51%	55%	48%

SSR	115
NSR	106
SBM	101
NBT	71

Purchaser.....

Price.....

**Lot**  
**20**

**DALKEITH PLATENUM P232**

**Born: 27/05/2018 EP: 100 / 100**

**Tattoo P232**

STUDBROOK DARTAGNION (V086)

**Birth Weight: 40.5**

Polled

OTAPAWA SPARK 3060

OTAPAWA SPOT (P30)

**Sire: DALKEITH MATE (M006)**

YALGOO ENGINEER (N95)

Grand Dam & Great Grand Dam used as a Donors.  
Top 20% of breed for GL & Rib/Rump Fat EBV's.  
Top 25% of breed for Scotol Size EBV's.

DALKEITH INNOCENT 43 (T153)

DALKEITH INNOCENT 3 (P096)

ALLENDALE NATIONAL (W168)

ALLENDALE PICKERING (A28)

WIRANYA PURITY (Q19)

**Dam: DALKEITH DIVIDEND 580 (E119)**

HOME HILL TEO (U015)

DALKEITH DIVIDEND 480 (Z526)

DALKEITH DIVIDEND 373 (V430)

**JULY 2020 HEREFORD GROUP BREEDPLAN**

	CE Dir	CE DTRS	GL	BWT	200D	400D	600D	MILK	SS	EMA	RIB	RUMP	IMF
	-5.4	-2.4	-1.7	5.8	33	50	67	12	2.5	3.8	1.2	2.0	0.7
	45%	40%	54%	73%	67%	68%	70%	54%	76%	49%	53%	57%	51%

SSR	92
NSR	82
SBM	75
NBT	54

Purchaser.....

Price.....

**Lot**  
**21**

**DALKEITH PRACTICE P080**

**Born: 22/04/2018 EP: 100 / 100**

**Tattoo P080**

KARINA CHERRY (Z8)

**Birth Weight: 37.0**

Scurred

TYCOLAH HAVOC (D41)

TYCOLAH MARSHALL LASS (A107)

**Sire: GUNDONGS LASER (L45)**

OLDFIELD ZODIAC (Z09)

Grand Dam & Great Grand Dam used as a Donors.  
Born 7 days early.  
Top 10% of breed for Gestation Length EBV's.  
Top 20% of breed for Rib/Rump Fat & IMF% EBV's.

GUNDONGS TILLY (E45)

GUNDONGS TILLY (A04)

DEBARRY CALGARY (C58)

ALLENDALE ANZAC (H175)

ALLENDALE DAWN (B22)

**Dam: DALKEITH DIVIDEND (L227)**

OTAPAWA SPARK 3060

DALKEITH DIVIDEND 632 (G153)

DALKEITH DIVIDEND 490 (Z320)

**JULY 2020 HEREFORD GROUP BREEDPLAN**

	CE Dir	CE DTRS	GL	BWT	200D	400D	600D	MILK	SS	EMA	RIB	RUMP	IMF
	1.8	2.5	-2.9	5.7	34	56	79	12	1.6	3.0	1.1	1.6	0.9
	36%	28%	72%	70%	64%	65%	68%	41%	75%	45%	49%	54%	45%

SSR	121
NSR	107
SBM	124
NBT	94

Purchaser.....

Price.....

<b>Breed</b>	CE Dir	CE DTRS	GL	BWT	200D	400D	600D	MILK	SS	EMA	RIB	RUMP	IMF
<b>Averages</b>	1.60	1.50	-0.50	4.30	33.00	55.00	78.00	16.00	2.00	3.40	0.60	0.70	0.50

**Practical Systems STOCKBOOK**  
Top 10% Top 25% Above Av

**Lot 22** **DALKEITH POWER HOUSE P108** **Born: 27/04/2018** **EP: 100 / 100** **Tattoo P108**  
 ALLENDALE WATERHOUSE (D1) **Birth Weight: 38.5** Polled  
 ALLENDALE DISTINGUISHED (H52)

**Sire: DALKEITH MAGIC (M035)**  
 ALLENDALE MARLINE (X185)  
 CANNAWIGRA COMMANDER (Z51) Great Grand Dam used as a Donor.  
 MOUNTAIN VALLEY MATCHLESS (G45) Heifers 1st calf.  
 MOUNTAIN VALLEY MATCHLESS (B41) Top 10% of breed for EMA EBVs.  
 OKAWA LAIDLAW 4156 Top 15% of breed for Rib/Rump Fat EBVs.  
 MONYMUSK EIFFEL TOWER 0140 Joined to Commercial Cows at Dalkeith for 104days.  
 MONYMUSK LEONORA 050091

**Dam: DALKEITH MARINDA (L288)**  
 KOANUI ROCKET 0219  
 DALKEITH MARINDA 424 (G115)  
 DALKEITH MARINDA 344 (C042)

**JULY 2020 HEREFORD GROUP BREEDPLAN**

BREEDPLAN COMPLETENESS	CE Dir	CE DTRS	GL	BWT	200D	400D	600D	MILK	SS	EMA	RIB	RUMP	IMF
	3.8	2.8	0.9	3.4	26	48	63	11	2.0	5.2	1.3	1.9	0.5
	41%	33%	48%	72%	66%	67%	70%	43%	76%	47%	52%	56%	49%

<b>SSR</b>	<b>130</b>
<b>NSR</b>	<b>130</b>
<b>SBM</b>	<b>136</b>
<b>NBT</b>	<b>98</b>

Purchaser..... Price.....

**Lot 23** **DALKEITH PARROT P088** **Born: 23/04/2018** **EP: 100 / 100** **Tattoo P088**  
 ALLENDALE WATERHOUSE (D1) **Birth Weight: 38.0** Polled  
 ALLENDALE DISTINGUISHED (H52)

**Sire: DALKEITH MAGIC (M035)**  
 ALLENDALE MARLINE (X185)  
 CANNAWIGRA COMMANDER (Z51) Heifers 1st calf.  
 MOUNTAIN VALLEY MATCHLESS (G45) Top 20% of breed for EMA EBVs.  
 MOUNTAIN VALLEY MATCHLESS (B41) 2 Joinings. 1st joining to Commercial 2yr Old  
 YAMBRO CONRAD (B88) Heifers & 2nd joining to Commercial Cows at  
 DALKEITH KING KONG (K160) Dalkeith for 104days.

**Dam: DALKEITH FROLIC (M134)**  
 DALKEITH FROLIC 199 (G096)  
 CASCAD E L DORADO (E27)  
 DALKEITH FROLIC (K257)  
 DALKEITH FROLIC 179 (D088)

**JULY 2020 HEREFORD GROUP BREEDPLAN**

BREEDPLAN COMPLETENESS	CE Dir	CE DTRS	GL	BWT	200D	400D	600D	MILK	SS	EMA	RIB	RUMP	IMF
	2.5	2.5	0.0	4.4	34	54	75	15	1.7	4.4	0.7	1.1	0.4
	38%	27%	41%	72%	65%	66%	69%	40%	75%	46%	51%	55%	47%

<b>SSR</b>	<b>132</b>
<b>NSR</b>	<b>123</b>
<b>SBM</b>	<b>137</b>
<b>NBT</b>	<b>99</b>

Purchaser..... Price.....

**Lot 24** **DALKEITH PEACOCK P107** **Born: 27/04/2018** **EP: 100 / 100** **Tattoo P107**  
 ALLENDALE SUPERSTAR (B28) **Birth Weight: 42.5** Polled  
 ALLENDALE YALLARO I 2 (E25)

**Sire: ALLENDALE FCF BARKLY (H127)**  
 ALLENDALE FANCY (A181)  
 OKAWA COMMODORE 2076 Grand Dam used as a Donor.  
 ALLENDALE FANCY (C210) Born 2 days early.  
 ALLENDALE FANCY (Y98) Top 20% of breed for 200day Growth EBVs.  
 MARKOWEN TABOR (X10) Top 25% of breed for Gestation Length EBVs.  
 MARKOWEN INTRUDER (Z33) Joined to Barbs Cows for 104days.

**Dam: DALKEITH DEAREST (L026)**  
 MARKOWEN LYDIA 5 (X13)  
 ALLENDALE OPINION (U122)  
 DALKEITH DEAREST 254 (Z345)  
 DALKEITH DEAREST 217 (U349)

**JULY 2020 HEREFORD GROUP BREEDPLAN**

BREEDPLAN COMPLETENESS	CE Dir	CE DTRS	GL	BWT	200D	400D	600D	MILK	SS	EMA	RIB	RUMP	IMF
	3.1	2.8	-1.6	4.2	38	59	73	7	1.9	2.8	0.4	0.6	0.3
	48%	39%	75%	74%	70%	70%	73%	53%	78%	53%	56%	61%	56%

<b>SSR</b>	<b>126</b>
<b>NSR</b>	<b>120</b>
<b>SBM</b>	<b>130</b>
<b>NBT</b>	<b>95</b>

Purchaser..... Price.....

Breed Averages	CE Dir	CE DTRS	GL	BWT	200D	400D	600D	MILK	SS	EMA	RIB	RUMP	IMF	Practical Systems STOCKBOOK		
	1.60	1.50	-0.50	4.30	33.00	55.00	78.00	16.00	2.00	3.40	0.60	0.70	0.50	Top 10%	Top 25%	Above Av



**Lot 25 DALKEITH PROSPECT P219** Born: 26/05/2018 EP: 100 / 100 Tattoo P219  
 DEBARRY CALGARY (C58) EBBX CALGARY (Y42) Birth Weight: 39.5 Polled

**Sire: ALLENDALE ANZAC (H175)**  
 ALLENDALE DAWN (B22) DEBARRY DALLAS (X75)  
 ALLENDALE VAGABOND (A74) ALLENDALE NATIONAL (W168)  
 ALLENDALE DAWN (T60) Born on due date.  
 ALLENDALE ROSEMOUNT 2 (X55) Top 20% of breed for IMF% EBVs.

**Dam: DALKEITH DEAREST (J112)**  
 DALKEITH DEAREST 296 (F086) SUZELLE MARLINE (U54)  
 TYCOLAH WARRIOR (S32)  
 DALKEITH DEAREST 265 (B044)

**JULY 2020 HEREFORD GROUP BREEDPLAN**

BREEDPLAN COMPLETENESS	CE Dir	CE DTRS	GL	BWT	200D	400D	600D	MILK	SS	EMA	RIB	RUMP	IMF
	1.6	3.3	-1.1	4.2	28	49	63	10	2.1	1.8	0.6	1.0	0.9
	49%	40%	76%	74%	70%	70%	73%	57%	78%	53%	57%	61%	55%

SSR	90
NSR	79
SBM	96
NBT	76

Purchaser..... Price.....

**Lot 26 DALKEITH PUPPET P034** Born: 3/04/2018 EP: 100 / 100 Tattoo P034  
 KURRAJONG PARK (B144) DALKEITH WOLLY (W163) Birth Weight: 41.0 Polled

**Sire: YAVENVALE EINSTEIN (E344)**  
 YAVENVALE DOREEN (C119) KURRAJONG PARK WINKER (W145)  
 KAIRURU FLINT 8058 SOUTH BUKALONG WALLACE 2 (Y781) ET Bred. Dam, Grand Dam & Great Grand Dam used as Donors.  
 KAIRURU ABERDEEN 3047 YAVANVALE DOREEN (Z446) Born 2 days early.  
 KAIRURU LEONORA 01 02 KAIRURU ABERDEEN 3047 Top 5% of breed for Milk & Rib/Rump Fat EBVs.  
 ALLENDALE OPINION (U122) Top 10% of breed for Scotol Size EBVs.  
 DALKEITH FROLIC 153 (B010) DALKEITH FROLIC 33 (R083) Joined to Commercial Cows at Dalkeith for 104days.

**JULY 2020 HEREFORD GROUP BREEDPLAN**

BREEDPLAN COMPLETENESS	CE Dir	CE DTRS	GL	BWT	200D	400D	600D	MILK	SS	EMA	RIB	RUMP	IMF
	1.8	2.2	-1.3	4.8	34	55	74	23	3.0	2.2	1.8	2.9	0.4
	47%	37%	61%	73%	68%	68%	70%	59%	71%	50%	54%	58%	54%

SSR	118
NSR	102
SBM	120
NBT	87

Purchaser..... Price.....

**Lot 27 DALKEITH PIRATE P113** Born: 29/04/2018 EP: 100 / 100 Tattoo P113  
 KOANUI ROCKET 0219 KOANUI ROCKET (Q334) Birth Weight: 37.5 Polled

**Sire: DALKEITH GIGOLO (G034)**  
 DALKEITH VICTORIA 64 (B039) KOANUI ANGEL (R187)  
 CHESTER COMMODORE (D32) CALLENUP LEONARD  
 QUAMBY PLAINS JESS (X102) 1st of the Potential Heifer Bulls.  
 DALKEITH (Y103) Great Grand Dam used as a Donor.  
 DALKEITH JANET 66 (D112) DALKEITH JANET 47 (W217) Born on due date.  
 Top 20% of breed for Birth Weight EBVs.  
 2 Joinings. 1st joining to Commercial 2yr Old Heifers for 45days & 2nd joining to Barbs Cows for 104days.

**JULY 2020 HEREFORD GROUP BREEDPLAN**

BREEDPLAN COMPLETENESS	CE Dir	CE DTRS	GL	BWT	200D	400D	600D	MILK	SS	EMA	RIB	RUMP	IMF
	4.4	2.6	-0.4	2.6	32	59	78	17	1.5	2.4	0.6	1.1	0.4
	44%	37%	73%	73%	67%	68%	71%	48%	76%	50%	54%	58%	52%

SSR	117
NSR	106
SBM	135
NBT	107

Purchaser..... Price.....

Breed	CE Dir	CE DTRS	GL	BWT	200D	400D	600D	MILK	SS	EMA	RIB	RUMP	IMF	Practical Systems STOCKBOOK		
Averages	1.60	1.50	-0.50	4.30	33.00	55.00	78.00	16.00	2.00	3.40	0.60	0.70	0.50	Top 10%	Top 25%	Above Av

**Lot**  
**28**

**DALKEITH PIPER P220**

**Born: 26/05/2018 EP: 100 / 100**

**Tattoo P220**

SHF WONDER M326 W18  
NJW 73S W18 HOMETOWN 10Y  
NJW P606 72N DAYDREAM 73S

**Birth Weight: 42.0 Polled**

**Sire: CASCADE MAGNATE (M003)**


CASCADE IRISH MAID (J138)  
YAMBRO CONRAD (C26)  
RUSSLYNN FLARE (F39)  
CASCADE IRISH MAID (A37)  
YAMBRO VELOCITY (X78)  
YAMBRO PYLARA (Y52)

Great Grand Dam used as a Donor.  
Born on due date.  
Top 15% of breed for Calving Ease DTRS EBVs.  
Top 25% of breed for Gestation Length EBVs.

**Dam: DALKEITH DEAREST J128**

DALKEITH DEAREST 301 ET1  
OTAPAWA SKYMATE 2046  
DALKEITH DEAREST 254 (Z345)

**JULY 2020 HEREFORD GROUP BREEDPLAN**

	CE Dir	CE DTRS	GL	BWT	200D	400D	600D	MILK	SS	EMA	RIB	RUMP	IMF
	0.0	4.9	-1.4	3.9	32	56	77	16	1.8	3.7	0.1	-0.3	0.5
	41%	30%	75%	73%	68%	68%	71%	45%	76%	49%	54%	58%	52%

SSR	116
NSR	99
SBM	119
NBT	86

Purchaser.....

Price.....

**Lot**  
**29**

**DALKEITH PACKARD P225**

**Born: 27/05/2018 EP: 100 / 100**

**Tattoo P225**

KOANUI ROCKET 0219  
PINE HILL CROSSFIRE (C558)  
PINE HILL GHOST MAPLE (W16)

**Birth Weight: 34.5 Polled**

**Sire: YAVENVALE JET FIRE (J032)**


YAVENVALE EMPRESS (G320)  
KURRAJONG PARK (B144)  
YAVENVALE EMPRESS (C340)  
BOBANKEN X-MARK (X157)  
MOUNTAIN VALLEY CHAINSAW (C9)

Top 25% of breed for Birth Weight EBVs.  
Joined to Commercial 2yr Old Heifers for 45days.

**Dam: DALKEITH GLORY (J186)**

MOUNTAIN VALLEY LADY (S101)  
DALKEITH GLORY 168 (E026)  
ALLENDALE OPINION (U122)  
DALKEITH GLORY 153 (B189)

**JULY 2020 HEREFORD GROUP BREEDPLAN**

	CE Dir	CE DTRS	GL	BWT	200D	400D	600D	MILK	SS	EMA	RIB	RUMP	IMF
	3.9	2.9	0.6	2.8	32	55	75	18	0.2	3.1	-0.1	-0.1	0.1
	46%	33%	76%	74%	69%	69%	72%	50%	77%	50%	55%	59%	54%

SSR	109
NSR	96
SBM	129
NBT	102

Purchaser.....

Price.....

**Lot**  
**30**

**DALKEITH PERTH P058**

**Born: 7/04/2018 EP: 100 / 100**

**Tattoo P058**

ALLENDALE SUPERSTAR (B28)  
ALLENDALE YALLAROI 2 (E25)

**Birth Weight: 35.0 Polled**

**Sire: ALLENDALE FCF BARKLY (H127)**


ALLENDALE FANCY (A181)  
OKAWA COMMODORE 2076  
ALLENDALE FANCY (C210)  
ALLENDALE FANCY (Y98)  
YAMBRO CONRAD (B88)  
DALKEITH JACKY HOWE (J096)

Great Grand Dam used as a Donor.  
Heifers 1st calf.  
Top 25% of breed for Birth Weight & Rump Fat EBVs.  
2 Joinings. 1st joining to Commercial 2yr Old Heifers for 46days & 2nd joining to Barbs Cows for 104days.

**Dam: DALKEITH PANSY (L342)**

DALKEITH INNOCENT 43 (T153)  
TYCOLAH CUNNAMULLA FELLA (Y59)  
DALKEITH PANSY 189 (C085)  
DALKEITH PANSY 175 (Z066)

**JULY 2020 HEREFORD GROUP BREEDPLAN**

	CE Dir	CE DTRS	GL	BWT	200D	400D	600D	MILK	SS	EMA	RIB	RUMP	IMF
	4.0	0.7	0.3	3.0	31	45	57	10	2.4	1.7	0.8	1.4	0.2
	44%	34%	73%	74%	69%	69%	72%	49%	77%	50%	54%	59%	53%

SSR	105
NSR	98
SBM	107
NBT	79

Purchaser.....

Price.....

<b>Breed</b>	CE Dir	CE DTRS	GL	BWT	200D	400D	600D	MILK	SS	EMA	RIB	RUMP	IMF
<b>Averages</b>	1.60	1.50	-0.50	4.30	33.00	55.00	78.00	16.00	2.00	3.40	0.60	0.70	0.50

**Practical Systems STOCKBOOK**  
Top 10% Top 25% Above Av

**Lot 31 DALKEITH PREDOMINATOR P182** Born: 22/05/2018 EP: 100 / 100 Tattoo P182  
 DALKEITH WOLLY (W163) Birth Weight: 29.0 Polled

KURRAJONG PARK (B144)

KURRAJONG PARK WINKER (W145)

**Sire: YAVENVALE EINSTEIN (E344)**

YAVENVALE DOREEN (C119)

SOUTH BUKALONG WALLACE 2 (Y781)

Top 5% of breed for Rib/Rump Fat EBV's.  
 Top 10% of breed for Calving Ease DTRS & Milk EBV's.  
 Top 25% of breed for Calving Ease DIR & Birth Weight EBV's.  
 Joined to Commercial 2yr Old Heifers for 46days.

YAVANVALE DOREEN (Z446)

GRASSMERE SPARK 330

GRASSMERE SPARK 555

GRASSMERE PRINCESS 245


**Dam: DALKEITH MINERVA LASS 107 (H214)**

KIDMAN MENINGA (W94)

DALKEITH MINERVA LASS 98 (B266)

DALKEITH MINERVA LASS 2 (U100)

**JULY 2020 HEREFORD GROUP BREEDPLAN**

	CE Dir	CE DTRS	GL	BWT	200D	400D	600D	MILK	SS	EMA	RIB	RUMP	IMF
	5.3	6.5	-2.5	2.5	24	39	52	21	0.9	2.1	2.0	2.7	0.9
	47%	37%	75%	74%	69%	70%	73%	57%	77%	53%	57%	61%	56%

SSR	105
NSR	93
SBM	117
NBT	82

Purchaser.....

Price.....

**Lot 32 DALKEITH PIGEON P165** Born: 17/05/2018 EP: 100 / 100 Tattoo P165  
 ALLENDALE YALLARO I 2 (E25) Birth Weight: 36.5 Polled

ALLENDALE FCF BARKLY (H127)

ALLENDALE FANCY (C210)

Great Grand Dam used as a Donor.  
 Top 10% of breed for Calving Ease DIR EBV's.  
 Top 15% of breed for GL, BW, Fat's & IMF% EBV's.  
 Top 20% of breed for Calving Ease DTRS EBV's.  
 2 Joinings. 1st joining to Commercial 2yr Old Heifers for 46days & 2nd joining to Barbs Cows for 104days.

**Sire: DALKEITH MIGHTY (M097)**

NEWSOME PATRICIA (G63)

MOUNTAIN VALLEY QUICKDRAW (A18)

NEWSOME V36 PATRICIA (Y301)

SOUTH BUKALONG WALKER 6 (W688)

SOUTH BUKALONG WALLACE 2 (Y781)

SOUTH BUKALONG VICTORIA 152 (V510)


**Dam: DALKEITH INNOCENT (K218)**

BOWEN TORNADO (Z260)

DALKEITH INNOCENT 103 (E286)

DALKEITH INNOCENT 43 (T153)

**JULY 2020 HEREFORD GROUP BREEDPLAN**

	CE Dir	CE DTRS	GL	BWT	200D	400D	600D	MILK	SS	EMA	RIB	RUMP	IMF
	8.6	4.7	-2.4	1.7	28	47	61	10	2.3	3.2	1.3	1.7	1.0
	41%	33%	52%	72%	66%	67%	70%	46%	76%	48%	52%	56%	49%

SSR	143
NSR	141
SBM	153
NBT	113

Purchaser.....

Price.....

Breed	CE Dir	CE DTRS	GL	BWT	200D	400D	600D	MILK	SS	EMA	RIB	RUMP	IMF
Averages	1.60	1.50	-0.50	4.30	33.00	55.00	78.00	16.00	2.00	3.40	0.60	0.70	0.50

**Practical Systems STOCKBOOK**  
 Top 10% Top 25% Above Av





**P182 Lot 31**



**P225 Lot 29**



**P165 Lot 32**



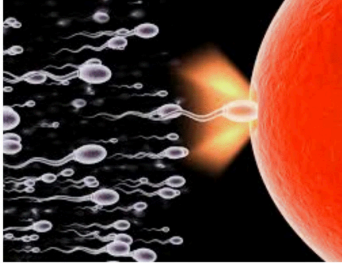
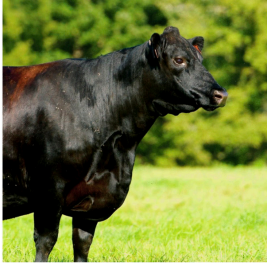
**P058 Lot 30**





**FOR ALL YOUR ARTIFICIAL BREEDING NEEDS**

Artificial Insemination    Ultrasound Preg Testing    Semen Collection    Semen & Embryo Storage    Ear Tags    Supplements



[www.northernab.com.au](http://www.northernab.com.au)

[brendan@northernab.com.au](mailto:brendan@northernab.com.au)

02 6545 2465

0427 417 148

*Notes*

---





**P193 Lot 7**



**P021 Lot 9**



**P099 Lot 10**



**P060 Lot 12**



# On Offer At The 50th Annual Dalkeith Spring Sale



**P080 Lot 21**

**32  
Grassfed  
Bulls  
No Grain  
Joined as  
yearlings**

**All Sale Bulls Prepared On Green Oats Only**

**All joined  
as yearlings**



**P034 Lot 26**

**THIS AUCTION IS AN  
AUCTIONS PLUS ONLINE SALE ONLY  
WHICH WILL RUN FROM 1.30pm TO 2.30pm.**