

Screw Cover

SERIES - NSC-3R - Meets NEMA Type 3R **Galvanized, Stainless Steel or Aluminum**



Construction

(Series NSC-3R)

NEMA 3R Construction

- 16, 14, 12 or 10 gauge material per code
- (3) piece construction, formed and welded
- Flat removable cover, stainless screws
- Supplied with approved hardware
- Optional ground studs and panels

Finish

Steel enclosures are painted ANSI-61 Gray.
Stainless & Aluminum - standard 2B mill finish or # 4 grained.

Modifications

We will readily provide any details, holes, knock-outs, hubs, or cut-outs per your specifications.

Also special sizes and finishes can be provided from the factory.

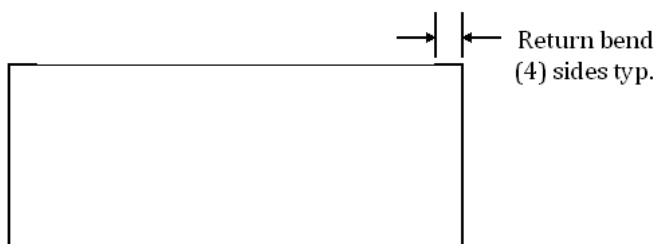
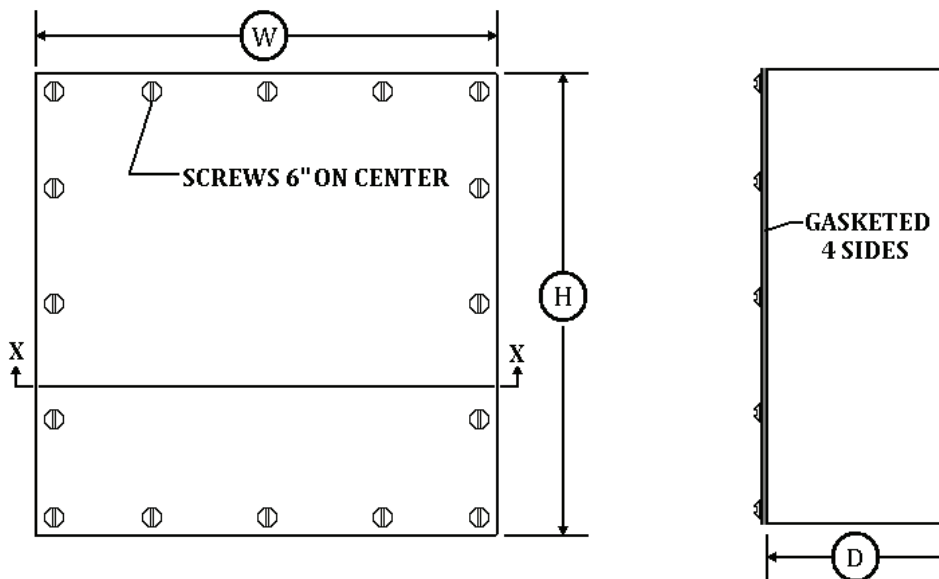
Industry Standards

Enclosures conform to UL and CUL standards.
Based on standards set forth by (NEMA) National Electrical Manufacturers' Association.

Screw Cover

SERIES - NSC-3R
Meets NEMA Type 3R

H x W x D



SECTION X-X
(with cover removed)

"QTY"	"H"	"W"	"D"	SERIES
				NSC-3R



Directions for ordering:

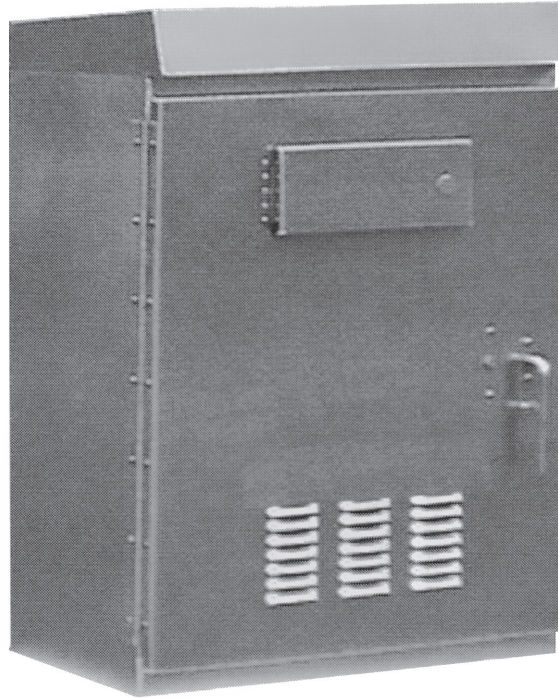
1. Copy or scan page.
2. Fill in details: QTY, "H", "W" & "D"
3. Fax or email filled out sheet to 781-767-7519 or info@newcommetal.com

**NEW
COM METAL PRODUCTS CORP.**

www.newcommetal.com

Public Works Enclosure

SERIES – N3R - Meets NEMA Type 3R **Aluminum, Galvanized, Steel or Stainless Steel**



Construction

(Series N3R)

NEMA 3R Construction

- 12 GA. Galv., S.S. or 0.125 ALUM. material per code
- Hinge cover with latch and stainless hardware
- Mounting holes provided for simple installation
- 3-point Locking handle with provision for padlock

Finish

Stainless & Aluminum - standard 2B mill finish or # 4 grained.

Modifications

We will readily provide any details, holes, knock-outs, hubs, or cut-outs per your specifications.

Also special sizes and finishes can be provided from the factory.

Industry Standards

Enclosures conform to UL and CUL standards.

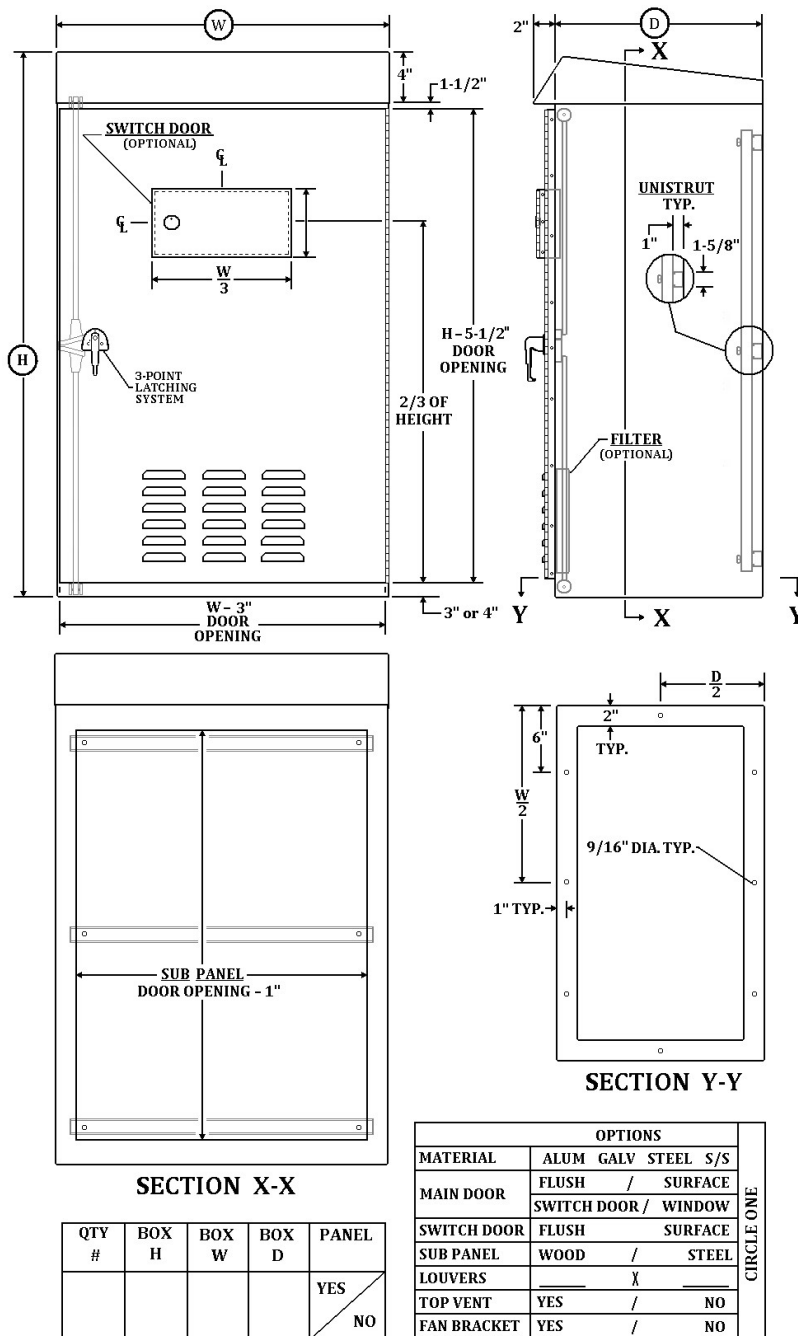
Based on standards set forth by (NEMA) National Electrical Manufacturers' Association.

 **NEW
COM METAL PRODUCTS CORP.**

www.newcommetal.com

Public Works Enclosure

SERIES – N3R & N4X - H x W x D - Meets NEMA Type 3R & N4X



Directions for ordering:

1. Copy or scan page.
2. Fill in details: "QTY", "H", "W" & "D"
3. Circle "Options" details.
4. Fax or email filled out sheet to 781-767-7519 or info@newcommetal.com

**NEW
COM METAL PRODUCTS CORP.**

www.newcommetal.com

Public Works Enclosure

SERIES – N3R & N4X - Meets NEMA Type 3R & N4X
Aluminum, Galvanized, Steel or Stainless Steel



Construction

(Series N3R & N4X)
NEMA 3R Construction

- 12 gauge or 0.125 aluminum material per code
- Hinge cover with latch and plated hardware
- Mounting holes provided for simple installation
- 3-point Locking handle with provision for padlock

Finish

Steel enclosures are painted ANSI-61 Gray.
Stainless & Aluminum - standard 2B mill finish or # 4 grained.

Modifications

We will readily provide any details, holes, knock-outs, hubs, or cut-outs per your specifications.
Also special sizes and finishes can be provided from the factory.

Industry Standards

Enclosures conform to UL and CUL standards.
Based on standards set forth by (NEMA) National Electrical Manufacturers' Association.

 **NEW
COM METAL PRODUCTS CORP.**

www.newcommetal.com

Public Works Enclosure

SERIES – N3R & N4X - H x W x D - Meets NEMA Type 3R & N4X

FRONT VIEW: Dimensions include overall width (W), height (H), and door opening dimensions (W - 3" DOOR OPENING, H - 5-1/2" DOOR OPENING). A 3-POINT LATCHING SYSTEM is indicated.

SIDE VIEW: Shows depth (D) and door opening height (H - 5-1/2" DOOR OPENING). A UNISTRUT TYP. is shown with dimensions 1" and 1-5/8". A FILTER (OPTIONAL) is indicated.

SUB PANEL VIEW: Shows sub panel door opening - 1".

SECTION Y-Y: Shows internal details with dimensions 2", 1" TYP., 6", W/2, and 9/16" DIA. TYP.

QTY #					BOX H	BOX W	BOX D	PANEL
								YES / NO

OPTIONS			CIRCLE ONE
MATERIAL	ALUM	GALV STEEL S/S	
MAIN DOOR	FLUSH	/ SURFACE	
SWITCH DOOR / WINDOW	FLUSH	SURFACE	
SUB PANEL	WOOD	/ STEEL	
LOUVERS		X	
TOP VENT	YES	/ NO	
FAN BRACKET	YES	/ NO	

Directions for ordering:

1. Copy or scan page.
2. Fill in details: QTY, "H", "W" & "D"
3. Circle "Option" details
4. Fax or email filled out sheet to 781-767-7519 or info@newcommetal.com

**NEW
COM METAL PRODUCTS CORP.**

www.newcommetal.com