

STAMP AND SIGNATURE:

THESE DRAWINGS ARE THE INTELLECTUAL PROPERTY OF KEEFE & WESNER ARCHITECTS AND MAY NOT BE REPRODUCED, REVISED, OR USED FOR ANY PURPOSE WITHOUT PRIOR WRITTEN PERMISSION

LAKIS RESIDENCE
 OLD BENNINGTON, VT

DATE ISSUED: 8/29/24

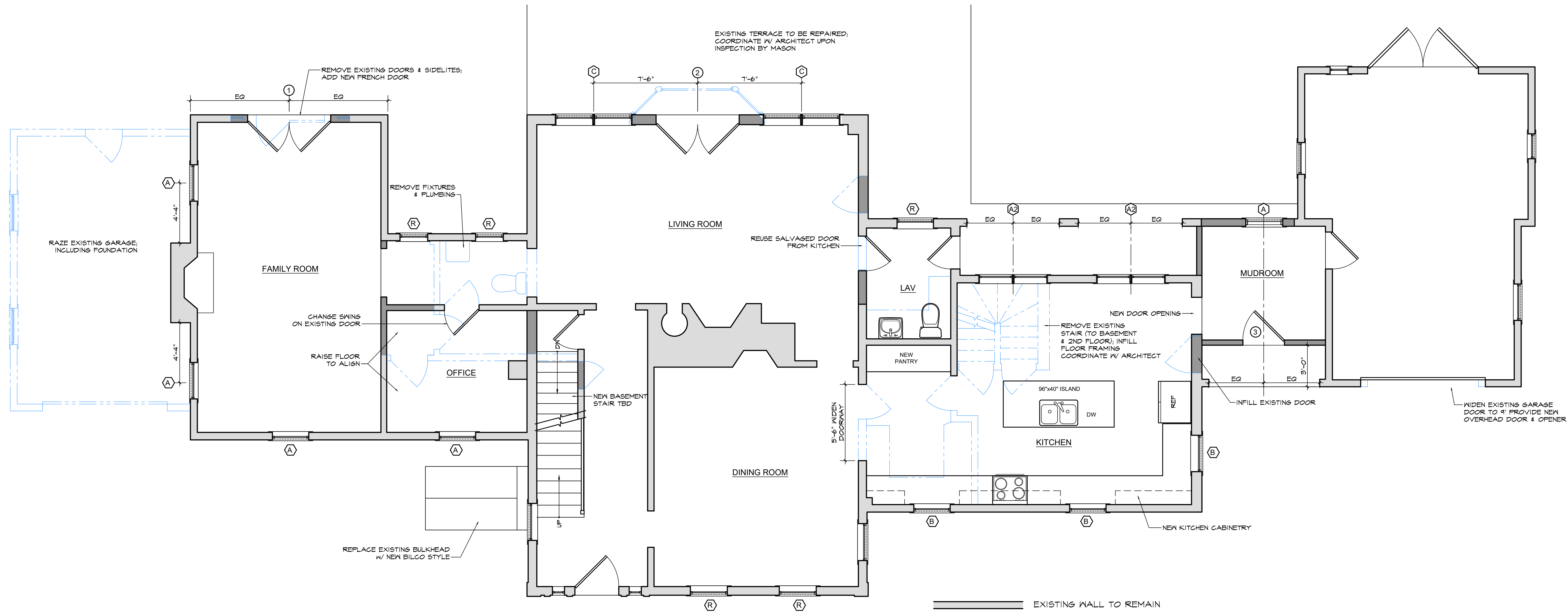
REVISIONS:

DRAWN BY:
 CHECKED BY:
 TITLE:

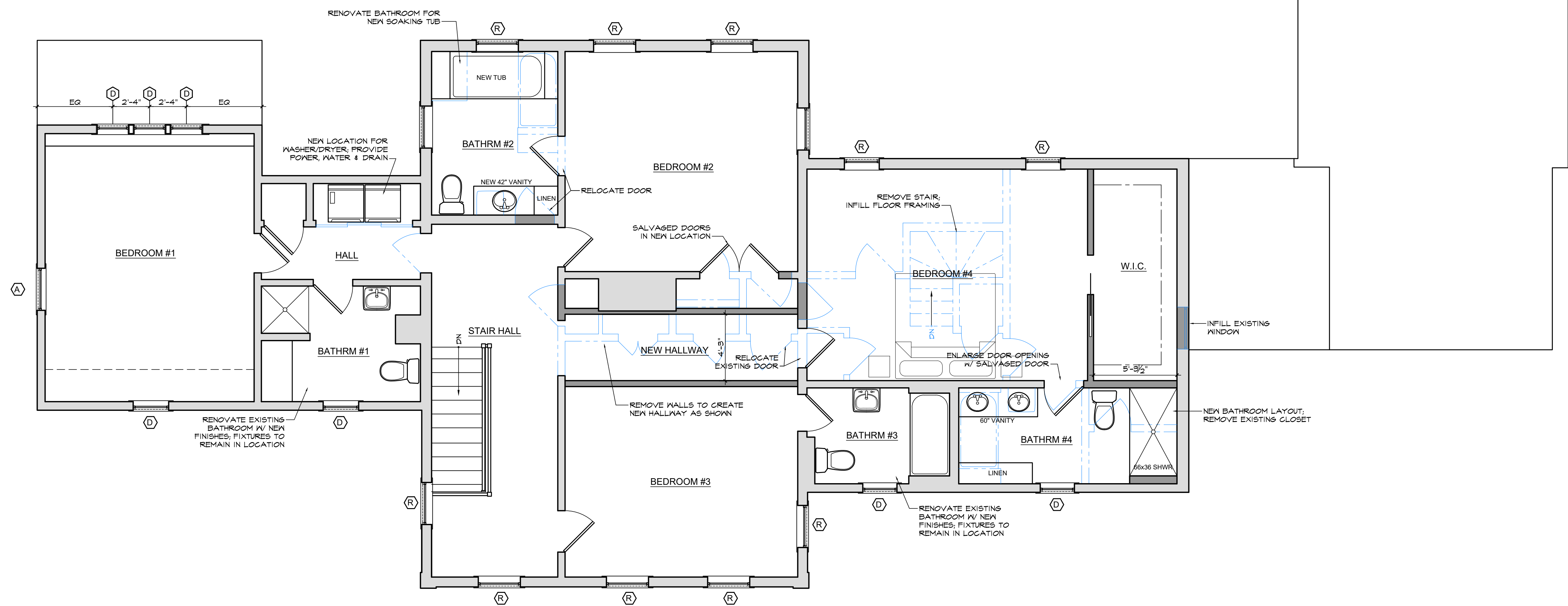
FLOOR PLANS

DRAWING NO.

A1



1 FIRST FLOOR PLAN
 1/4"=1'-0"



2 SECOND FLOOR PLAN
 1/4"=1'-0"

STAMP AND SIGNATURE:

THESE DRAWINGS ARE THE INTELLECTUAL PROPERTY OF KEEFE & WESNER ARCHITECTS AND MAY NOT BE REPRODUCED, REVISED, OR USED FOR ANY PURPOSE WITHOUT PRIOR WRITTEN PERMISSION

LAKIS RESIDENCE
 OLD BENNINGTON, VT

DATE ISSUED: 8/29/24

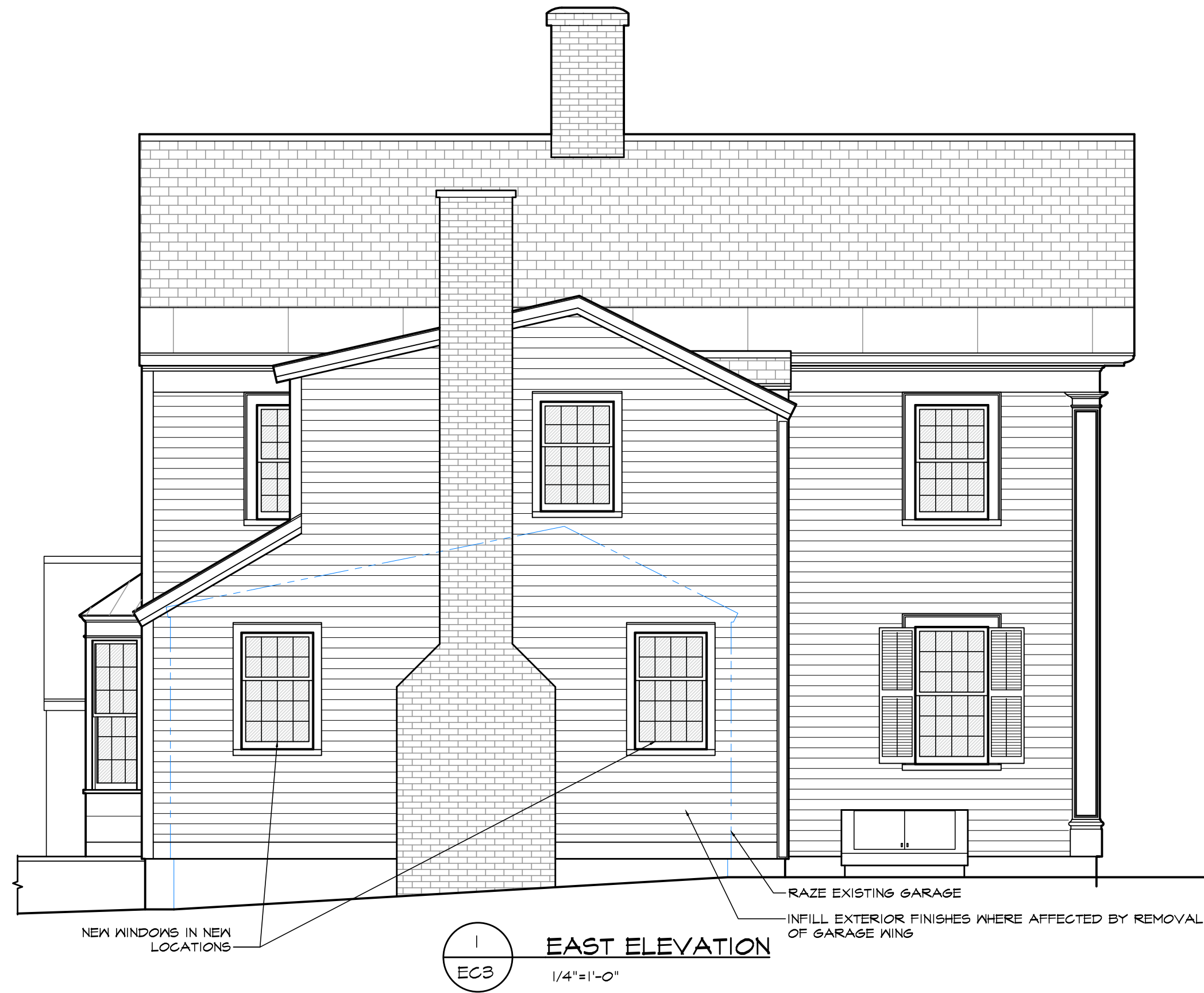
REVISIONS:

DRAWN BY:
 CHECKED BY:
 TITLE:
 ELEVATIONS

DRAWING NO.

A2





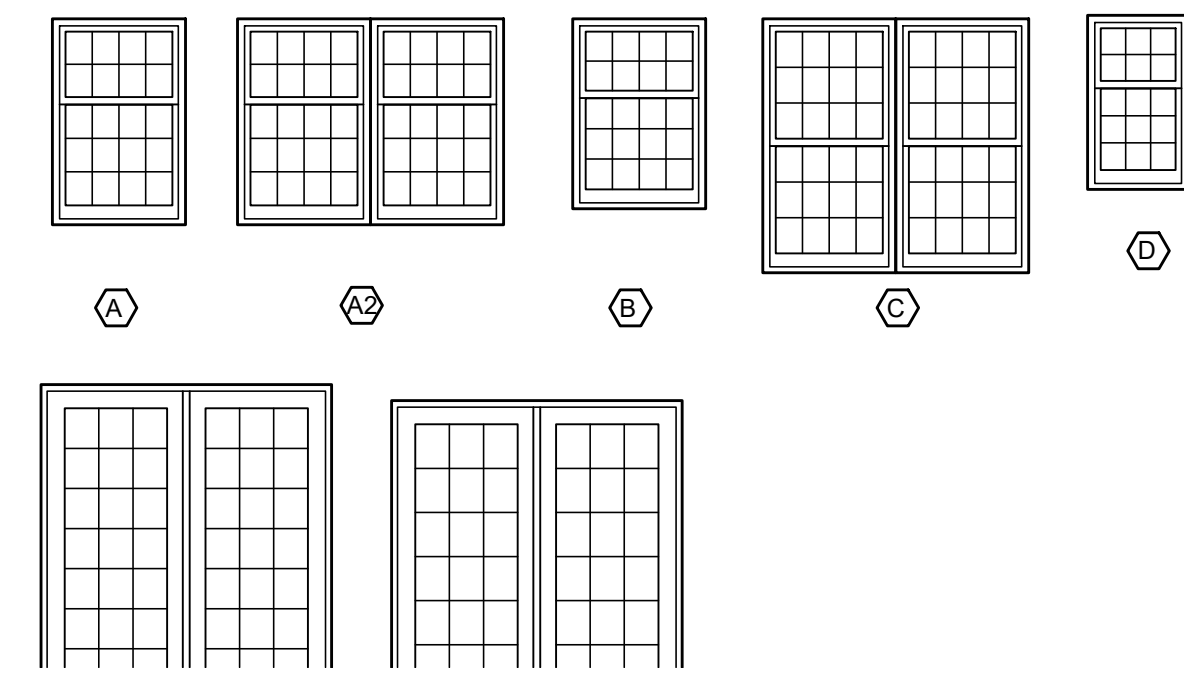
DOOR SCHEDULE

NO.	STYLE	MANUF.	MODEL #	SIZE (WxHxTH)	MATERIAL	TYPE	FINISH	HWDR SET & FUNCTION	REMARK
1	SWINGS	MARVIN ULTIMATE	UFD6070	6'-8" x 7'-2 1/2"					
2	SWINGS	MARVIN ULTIMATE	UFD6068	6'-8" x 6'-10 1/2"					
3	SWINGS			3'-0" x 6'-8" x 13"					

WINDOW SCHEDULE

NO.	MANUFACTURER	MODEL #	SIZE (R.O.)	TYPE	EXTERIOR FINISH	INTERIOR FINISH	GLASS	
A	MARVIN ULTIMATE	UDH92 2822C	34 1/2" x 52"	COTTAGE DOUBLE HUNG	WHITE	WHITE	LOW-E II	
A2	MARVIN ULTIMATE	(2) UDH92 2822C	67 1/2" x 52"	COTTAGE DOUBLE HUNG	WHITE	WHITE	LOW-E II	
B	MARVIN ULTIMATE	UDH92 2820C	34 1/2" x 48"	COTTAGE DOUBLE HUNG	WHITE	WHITE	LOW-E II	
C	MARVIN ULTIMATE	UDH92 2828	67 1/2" x 64"	DOUBLE HUNG	WHITE	WHITE	LOW-E II	
D	MARVIN ULTIMATE	UDH92 2018C	26 1/2" x 44"	COTTAGE DOUBLE HUNG	WHITE	WHITE	LOW-E II	
E	MARVIN ULTIMATE	REPLACEMENT INSERT	BY SUPPLIER	IKKH	???	???	???	

NOTE: PROVIDE TEMPERED GLASS FOR NEW WINDOWS IN ALL HAZARD LOCATIONS (BATHROOMS) & IN LOCATIONS WHERE SILL IS BELOW 24" AFF; PROVIDE ALL NEW WINDOWS TO HAVE 3" SGL LITES AS SHOWN ON THE ELEVATIONS



STAMP AND SIGNATURE:

THESE DRAWINGS ARE THE INTELLECTUAL PROPERTY OF KEEFE & WESNER ARCHITECTS AND MAY NOT BE REPRODUCED, REVISED, OR USED FOR ANY PURPOSE WITHOUT PRIOR WRITTEN PERMISSION

LAKIS RESIDENCE
OLD BENNINGTON, VT

DATE ISSUED: 8/29/24

REVISIONS:

DRAWN BY:

CHECKED BY:

TITLE:

ELEVATIONS

DRAWING NO.

A3