

Diamonds in the Rough

Bull & Female Sale

Monday, November 19, 2018

12 p.m. PST • JR Ranch • Othello, WA



WOOD V BAR X RANCH

Welcome

Friends and Red Angus Enthusiasts,

Welcome to our second annual Diamonds in the Rough Bull & Female Sale!

We are honored to share with you this selection of females and bulls that are the result of many years of hard work and genetic decisions our families have made. From bred heifers, elite donor prospects, proven donors, pregnant recipients and bulls, there are diamonds tucked in here for everyone.

In the "rolling hills of the Palouse" along the Palouse River, you will find our cattle grazing between the sculptured bluffs and in the beautiful river valley throughout the summer and fall months. This "real world" terrain readies them for the hard winters we often have. It also means these cattle have proven their ability to survive in any environment. Because of this, the cattle in our program and here in our offering are low maintenance and expected to produce more profit, not more work, for you.

When you study the sires towards the front of this catalog, you will see the power they represent and traits they pass on to their calves. We hope you'll take the time to review the pedigrees and EPDs for this sale offering and invite you to come out ahead of the sale to view the cattle in person. All of these genetic and phenotypical factors truly make up what we refer to as "Diamonds in the Rough" for this sale offering. With a little polish, these animals truly shine.

We are pleased to, once again, have the Wood family as our partners in this great event.

Thank you for your interest in our programs & our offering this fall. Please reach out if you have any questions at all.

Blessings to You,

The Lautenschlager Family

Howdy Folks and welcome to our Fall sale,

This year we are offering a select group of bred heifers Straight From the Heart of our program. Careful scrutinizing selections have been done to identify only the most fertile females were selected for replacements. The purebred herd runs with the commercial herd throughout the wintering, backgrounding and developing stage on the heifers. After the selection process has been done the pure bred heifers are sorted off and fed a small amount of concentrates to prepare them for Aling the first part of May. The service sires are selected to complement genetic makeup and bloodlines on an individual basis. Registered heifers are then sorted into two groups and put with cleanup Bulls based on the same Merit.

Our commercial heifers are pasture exposed for 60 days with no special treatment whatsoever.

Our vaccination regiment begins pre breeding with Preg Guard 10fp, ultrabac 8, multi-mineral, and dectomax pour on and is boosted at preg check time in the fall. Estimated calving dates are determined at that time as well.

Sire selection for our breeding program have always focused on easy fleshing type cattle excellent dispositions and fertility with Optimum growth are sought after traits. Although epd's are used as a selection tool they are not the only criteria used. Performance data as well as progeny reports and progeny performance data are a large part of our sire selection process.

We pride ourselves and take great responsibility in producing breeding stock that will enhance the productivity and profitability for the Cattleman and inevitably the beef cattle industry. We stand behind our program and guarantee any genetics and progeny we sell.

It is a pleasure participating in this sale with the Lautenschlagers. We also thank Jeff and Pam and the JR Ranch crew for allowing us to use this wonderful facility and all of their crew and help.

Have a wonderful fall and hope to see you at the sale

The Wood Family

Diamonds in the Rough

Bull and Female Sale

MONDAY, NOVEMBER 19, 2018

12 p.m. PST • JR Ranch sale facility - Othello, WA

HOME PHONE NUMBERS

Carl Lautenschlager 509-657-3301
Leonard Wood 208-263-5246

SALE DAY PHONES

Carl Lautenschlager (C) 509-595-8131
Leonard Wood (C) 208-290-7782
Katrina Lautenschlager (C) 509-592-7664

DIRECTIONS TO THE SALE

JR Ranch Sale Barn, 1892 W Hatton Rd, Othello, WA 99344



SCHEDULE OF EVENTS

The cattle will be available for viewing by
Sunday afternoon
11:00 am Lunch in the sale barn
12:00 pm (pst) Sale Starts

AUCTIONEER

Colonel Butch Booker cell 509-989-2855
Colfax, WA office 509-397-4434

INDUSTRY REPRESENTATIVES:

Sam Lorenzen/RAAA Director Area 1 541-215-2687
Gary Fike/Director of Commercial Marketing,
Westmoreland, KS 785-410-2608
Chuck Feddes/RAAA Director
Region A 406-581-8826

RINGMEN:

Mark Holt/Special Assignment 208-369-7425
Mark Frisbie/Western Ag Reporter 208-495-2601
Rod Wesselman/Special Assignment 509-750-2185

VIDEO

Videos of the cattle will be available on www.dvauction.com, lasoredangus.com & woodvbarxranch.com



INTERNET BIDDING

If you are unable to attend the sale for any reason, internet bidding is available via the DV Auctions website. Internet buyers must create an account and request a buyer number prior to the sale. If you choose to use this service please visit our sale at www.dvauction.com
Heather Soukup 402-316-5460
or support@dvauction.com

VETERINARIANS

Dr. Carl Wisse, DVM 509-539-6850
Dr. Rolland Hall, DVM - BF Vet Clinic 208-267-7502
Dr. Jenni Lyn Grimmett, DVM - TVS 208-659-6264

ACCOMMODATIONS

Quality Inn 509-488-5671
1020 E. Cedar St, Othello, WA

DELIVERY

We encourage buyers to pick their animals up at the sale facility on sale day or by noon of the following day to receive a \$50 discount off purchase price. If unable to haul your own cattle, arrangements can be made for delivery for an additional fee. Any purchases greater than \$10,000 will be delivered free of charge within the United States. We will make every effort to assist in delivery.

TERMS AND CONDITIONS

The Sale will follow the terms and conditions outlined by the Red Angus Association of America. A copy of these can be found at redangus.org.

LIABILITY

All persons attending the sale and related functions do so at their own risk. JR Ranch, its staff and representatives assume no liability, legal or otherwise, for any accidents or injuries that may occur.

HEALTH AND FERTILITY

All females have been pregnancy tested and calving dates projected accordingly. All bulls have passed a complete semen evaluation and have been TRICH tested prior to the sale.

SALE ORDER AND SUPPLEMENTAL INFORMATION

Individual calving dates on the commercial heifers will be available sale day. Any corrections or changes will be announced from the block.

SATISFACTON GUARANTEE

All bulls are guaranteed against injury or death for the first breeding season. If any females designated as bred fail to calve and it is determined that it is not due to management or conditions by new owner, we will refund your purchase price (minus salvage value) or compensate to the buyers satisfaction.



LAUTENSCHLAGER & SONS

1251 Cutler-Lautenschlager Rd

Endicott, WA 99125

(509) 657-3301

lasoredangus@gmail.com

lasoredangus.com



WOOD V BAR X RANCH



WOOD V BAR X RANCH

481649 Hwy 95

Sandpoint, Idaho 83864

Cell: 208-290-7782 (Leonard)

Office: 208-263-5246

haywoodcattle@gmail.com

woodvbarx ranch.com





SPUR FRANCHISE OF GARTON

BD 8/28/12	2114	2114	#3469042	100% AR /CAT.	Performance/Stats								
BASIN FRANCHISE P142				%IMF			LBS	Ratio					
SPUR FRANCHISE 7070 3318198				RATIO		Act. BW							
H&H L&C LADY BEHAVE 5040				REA		Adj. WW							
SYDGEN C C 7				RATIO		Adj. YW							
H & H IRENE LASS 0135 3469041				MPPA	100.99	ADG							
H & H IRENE LASS 7116						WDA							
CE SCORE	HB 167	13 %	GM 56	4 %									
GROWTH TRAITS			MATERNAL TRAITS				CARCASS TRAITS						
CED	BW	WW	YW	MILK	ME	HPG	CEM	STAY	MARB	YG	CW	REA	FAT
14	-2.1	63	105	23	-4	13	8	11	1.03	-0.11	48	1.05	0.03
31 %	27 %	15 %	14 %	36 %	93 %	7 %	33 %	33 %	2 %	1 %	5 %	1 %	24 %



C-BAR ELDORADO 114Z

BD 3/21/12	MCBR 114Z	#1551454	100% AR /CAT. A	Performance/Stats									
RED CROWFOOT OLE'S OSCAR				%IMF	7.33		LBS	Ratio					
C-BAR ANTICIPATION 101W 1361141				RATIO	0	Act. BW	66						
BROWN MS ABIGRACE L7730				REA	17	Adj. WW	788						
RED FINE LINE MULBERRY 26P				RATIO	0	Adj. YW	1377						
C-BAR STONY W914 1311205				MPPA	100	ADG	3.68						
BROWN-CBAR MS STONY ML P7590						WDA	3.78						
CE SCORE	HB 131	95 %	GM 53	8 %									
GROWTH TRAITS			MATERNAL TRAITS				CARCASS TRAITS						
CED	BW	WW	YW	MILK	ME	HPG	CEM	STAY	MARB	YG	CW	REA	FAT
16	-2.9	58	94	20	5	14	8	8	0.83	0.05	14	0.09	0.02
22 %	26 %	58 %	54 %	80 %	87 %	21 %	40 %	99 %	3 %	24 %	64 %	34 %	41 %



HXC JUSTICE 4017B

BD 2/1/14	HXC 4017B	#1719138	100% AR /CAT. A	Performance/Stats									
BKT JULIAN 7526 G				%IMF	4.68		LBS	Ratio					
BECKTON JULIAN GG B571 387580				RATIO	104	Act. BW	69						
BKT MARTA 9A13 JL				REA	17.14	Adj. WW	617						
BJR MAKE MY DAY 981				RATIO	109	Adj. YW	1288						
HXC JAYLO LB136 786564				MPPA	100.99	ADG	4.18						
HXC JAYLO 953J						WDA	3.4						
CE SCORE	HB 172	64 %	GM 52	17 %									
GROWTH TRAITS			MATERNAL TRAITS				CARCASS TRAITS						
CED	BW	WW	YW	MILK	ME	HPG	CEM	STAY	MARB	YG	CW	REA	FAT
13	-1.4	67	103	18	-2	12	5	14	0.61	0.07	13	0.03	0.03
46 %	52 %	24 %	34 %	87 %	37 %	35 %	78 %	78 %	18 %	31 %	68 %	44 %	46 %



MUSGRAVE AVIATOR

BD 1/30/12	542Z	#3320483	100% AR /CAT.	Performance/Stats									
SITZ UPWARD 307R			%IMF		LBS	Ratio							
KOUPALS B&B IDENTITY 3319778			RATIO		Act. BW								
B&B ERICA 605			REA		Adj. WW								
S A V FINAL ANSWER 0035			RATIO		Adj. YW								
MCATL FOREVER LADY 1429-138 3519794			MPPA	96.08	ADG								
ALC FOREVER LADY R 02S					WDA								
CE SCORE	HB 220	1 %	GM 53	10 %									
GROWTH TRAITS			MATERNAL TRAITS				CARCASS TRAITS						
CED	BW	WW	YW	MILK	ME	HPG	CEM	STAY	MARB	YG	CW	REA	FAT
18	-3.8	64	107	26		12	15	16	0.7	0.05	36	0.71	0.06
10 %	10 %	15 %	13 %	21 %	%	13 %	2 %	7 %	15 %	21 %	15 %	1 %	86 %



PIE PAYWEIGHT 6348

BD 3/22/16	PIE 6348	#3592128	100% AR /CAT. A	Performance/Stats									
LSF PROSPECT 2035Z			%IMF		LBS	Ratio							
PIE PAYWEIGHT 418 1724202			RATIO	0	Act. BW	79	96						
PIE POLLY 2377			REA		Adj. WW	614	93						
PIE CODE RED 9058			RATIO	0	Adj. YW	1306	105						
PIE SAMS REBA 1080 1483399			MPPA		ADG	4.32	120						
PIE SAMS REBA 6183					WDA	3.75	110						
CE SCORE	HB 193	23 %	GM 51	13 %									
GROWTH TRAITS			MATERNAL TRAITS				CARCASS TRAITS						
CED	BW	WW	YW	MILK	ME	HPG	CEM	STAY	MARB	YG	CW	REA	FAT
11	-1.1	59	103	30	2	10	7	18	0.39	0.1	19	0.08	0.03
67 %	55 %	46 %	20 %	7 %	76 %	68 %	57 %	24 %	49 %	49 %	39 %	28 %	75 %



5L DEFENDER 560-30Z

BD 2/4/12	FLR 30Z	#1549933	100% AR /CAT. A	Performance/Stats									
5L SIGNATURE 5615			%IMF	7.18	LBS	Ratio							
5L ADVOCATE 817-14W 1330290			RATIO	141	Act. BW								
5L MARTA 345-817			REA	15.17	Adj. WW	664							
TC STOCKMAN 365			RATIO	114	Adj. YW	1214							
5L BLACK ADINA 525-560 727792			MPPA	101	ADG	3.42							
5L ADINA 293-525					WDA	3.3							
CE SCORE	HB 126	96 %	GM 53	9 %									
GROWTH TRAITS			MATERNAL TRAITS				CARCASS TRAITS						
CED	BW	WW	YW	MILK	ME	HPG	CEM	STAY	MARB	YG	CW	REA	FAT
16	-4.1	60	99	20	-6	3	6	9	0.9	-0.04	4	0.1	0.01
21 %	13 %	52 %	43 %	80 %	16 %	99 %	69 %	98 %	2 %	7 %	88 %	32 %	11 %





9 MILE FRANCHISE 6305

BD 3/2/16	DYK 6305	#3555188	100% AR /CAT. A	Performance/Stats									
SPUR FRANCHISE 7070			%IMF	5.32	LBS	Ratio							
SPUR FRANCHISE OF GARTON 3469042			RATIO	108	Act. BW	72							
H & H IRENE LASS 0135			REA	14.52	Adj. WW	760							
TR COLT 45 UT806			RATIO	106	Adj. YW	1234							
C-BAR ABIGRACE Y11 1430755			MPPA	99.01	ADG	2.96							
C-BAR & BROWN ABIGRACE T712					WDA	3.41							
CE SCORE	HB 164	75 %	GM 53	9 %									
GROWTH TRAITS			MATERNAL TRAITS			CARCASS TRAITS							
CED	BW	WW	YW	MILK	ME	HPG	CEM	STAY	MARB	YG	CW	REA	FAT
12	-0.9	56	97	26	-1	15	7	13	0.74	-0.02	33	0.61	0.03
62 %	61 %	64 %	48 %	34 %	46 %	14 %	57 %	89 %	7 %	8 %	13 %	3 %	51 %



5L DEFENDER 5382-881D

BD 5/5/16	FLR 881D	#3577298	100% AR /CAT. A	Performance/Stats									
5L ADVOCATE 817-14W			%IMF	3.91	LBS	Ratio							
5L DEFENDER 560-30Z 1549933			RATIO	114	Act. BW	80	106						
5L BLACK ADINA 525-560			REA	13.05	Adj. WW	565	112						
5L FIRE DESIGN 1296-610W			RATIO	125	Adj. YW	937	106						
5L CREEKSIDE 1179-5382 1548815			MPPA		ADG	2.32	98						
5L SEOLA 1261-1179					WDA	2.5	103						
CE SCORE	HB 135	94 %	GM 52	9 %									
GROWTH TRAITS			MATERNAL TRAITS			CARCASS TRAITS							
CED	BW	WW	YW	MILK	ME	HPG	CEM	STAY	MARB	YG	CW	REA	FAT
14	-1.9	60	95	22	-5	8	4	11	0.7	-0.07	5	0.22	0.01
34 %	38 %	39 %	41 %	75 %	13 %	89 %	92 %	95 %	4 %	4 %	93 %	9 %	10 %



5L SIGNATURE 5615

BD 2/4/05	FLR 5615	#1047725	100% AR /CAT. A	Performance/Stats									
VGW KING OF THE WEST			%IMF	5.46	LBS	Ratio							
5L NORSEMAN KING 2291 806707			RATIO	0	Act. BW	83							
NORSEMAN 1312 PJM			REA	14.85	Adj. WW	716							
LCHMN GRANDCANYON 1244G			RATIO	0	Adj. YW	1315							
5L RUBY 199-01 789594			MPPA	100	ADG	3.74							
5L MISS BURKE 72-199					WDA	3.56							
CE SCORE	HB 128	%	GM 51	%									
GROWTH TRAITS			MATERNAL TRAITS			CARCASS TRAITS							
CED	BW	WW	YW	MILK	ME	HPG	CEM	STAY	MARB	YG	CW	REA	FAT
12	-0.6	60	99	33	1	14	6	10	0.59	0.06	16	0.15	0.03
%	%	%	%	%	%	%	%	%	%	%	%	%	%



5L BLOCKADE 214-75D

BD 2/12/16	FLR 75D	#3565061	100% AR /CAT. A	Performance/Stats									
5L DEFENDER 560-30Z			%IMF	4.8	LBS	Ratio							
5L BLOCKADE 2218-30B 1701553			RATIO	94	Act. BW	71	102						
5L OPAL 656-2218			REA	14.28	Adj. WW	662	106						
BUF CRK THE RIGHT KIND U199			RATIO	114	Adj. YW	1146	105						
5L FIREFLY 542-214 1702063			MPPA	99.16	ADG	3.01	105						
5L FIREFLY 1687-542					WDA	2.95	106						
CE SCORE	HB 188	41 %	GM 52	19 %									
GROWTH TRAITS			MATERNAL TRAITS				CARCASS TRAITS						
CED	BW	WW	YW	MILK	ME	HPG	CEM	STAY	MARB	YG	CW	REA	FAT
15	-1.7	70	113	20	-4	13	7	15	0.54	0.05	9	0.14	0.04
28 %	47 %	18 %	17 %	79 %	22 %	27 %	45 %	67 %	27 %	22 %	78 %	27 %	65 %



C-BAR-RJ GENESIS A31

BD 4/7/13	R11J A31	#1628423	100% AR /CAT. A	Performance/Stats									
TR COLT 45 UT806			%IMF	4.23	LBS	Ratio							
C-BAR EVOLUTION 107Y 1474506			RATIO	0	Act. BW	95	95						
LGS ABBY 689S			REA	13.89	Adj. WW	829							
5L NORSEMAN KING 2291			RATIO	0	Adj. YW								
C-BAR ABIGRACE W91 1370939			MPPA	103.92	ADG								
BROWN C- ABIGRACE S602					WDA								
CE SCORE	HB 125	97 %	GM 50	37 %									
GROWTH TRAITS			MATERNAL TRAITS				CARCASS TRAITS						
CED	BW	WW	YW	MILK	ME	HPG	CEM	STAY	MARB	YG	CW	REA	FAT
8	0.7	72	120	25	-1	12	4	11	0.28	0.01	31	0.15	-0.01
89 %	83 %	13 %	8 %	40 %	46 %	36 %	88 %	96 %	78 %	12 %	15 %	25 %	4 %



5L INDEPENDENCE 560-298Y

BD 3/16/11	FLR 298Y	#1450309	100% AR /CAT. A	Performance/Stats									
BUF CRK LANCER R017			%IMF	4.46	LBS	Ratio							
BUF CRK THE RIGHT KIND U199 1260155			RATIO	103	Act. BW	54	67						
BUF CRK SHOSHONE R353			REA	12.95	Adj. WW	643	104						
TC STOCKMAN 365			RATIO	103	Adj. YW	1218	108						
5L BLACK ADINA 525-560 727792			MPPA	100	ADG	3.57	112						
5L ADINA 293-525					WDA	3.35	108						
CE SCORE	HB 144	90 %	GM 52	14 %									
GROWTH TRAITS			MATERNAL TRAITS				CARCASS TRAITS						
CED	BW	WW	YW	MILK	ME	HPG	CEM	STAY	MARB	YG	CW	REA	FAT
17	-5	64	103	19	-8	7	6	10	0.82	0.09	15	-0.15	0.01
12 %	7 %	36 %	33 %	82 %	7 %	90 %	62 %	96 %	4 %	38 %	62 %	75 %	11 %





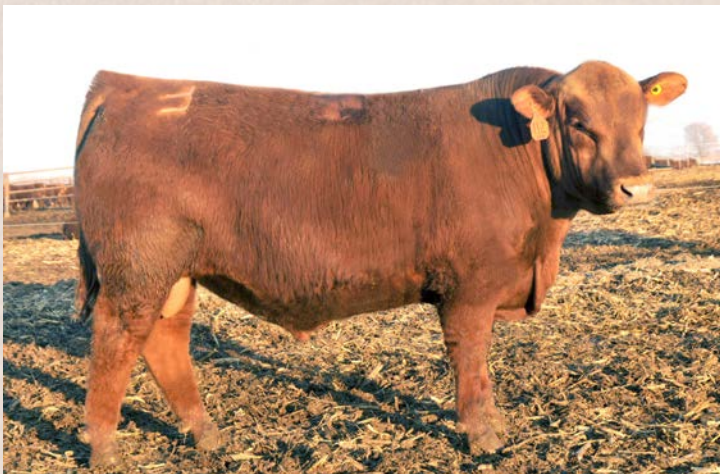
5L ADVOCATE 817-14W

BD 2/1/09	FLR 14W	#1330290	100% AR /CAT. A	Performance/Stats									
5L NORSEMAN KING 2291			%IMF	5.65		LBS	Ratio						
5L SIGNATURE 5615 1047725			RATIO	172	Act. BW	75							
5L RUBY 199-01			REA	11.87	Adj. WW	621							
5L HERITAGE 1821-5985			RATIO	103	Adj. YW	1184							
5L MARTA 345-817 1187121			MPPA	99	ADG	3.52							
5L MARTA 1563-345					WDA	3.21							
CE SCORE	HB 143	91 %	GM 53	6 %									
GROWTH TRAITS				MATERNAL TRAITS				CARCASS TRAITS					
CED	BW	WW	YW	MILK	ME	HPG	CEM	STAY	MARB	YG	CW	REA	FAT
13	-2.2	52	85	23	-2	6	4	12	1.22	0.16	6	-0.16	0.05
52 %	38 %	78 %	73 %	55 %	39 %	95 %	83 %	91 %	1 %	70 %	84 %	77 %	81 %



RED LAZY MC COWBOY CUT 26U

BD 2/10/08	*CBM 26U	#1329010	100% AR /CAT. A	Performance/Stats									
RED LAZY MC SMASH 41N			%IMF		LBS	Ratio							
RED LAZY MC STOUT 30S 2100304			RATIO		Act. BW	90							
RED LAZY MC SCYTHIA 78N			REA		Adj. WW	926							
LAZY MC WORLDWIDE 5K			RATIO		Adj. YW	1426							
RED LAZY MC STAR 185M 1892555			MPPA	101	ADG	3.12							
RED LAZY MC STAR 100J					WDA	3.96							
CE SCORE	HB 145	90 %	GM 46	93 %									
GROWTH TRAITS				MATERNAL TRAITS				CARCASS TRAITS					
CED	BW	WW	YW	MILK	ME	HPG	CEM	STAY	MARB	YG	CW	REA	FAT
10	1.5	63	101	14	-13	13	5	13	0.19	0.2	23	-0.16	0.04
79 %	90 %	38 %	38 %	97 %	1 %	30 %	79 %	85 %	90 %	86 %	38 %	77 %	68 %



LOOSLI RIGHT KIND 112

BD 1/27/11	LBLF 112	#1432590	100% AR /CAT. A	Performance/Stats									
BUF CRK LANCER R017			%IMF	3.5	LBS	Ratio							
BUF CRK THE RIGHT KIND U199 1260155			RATIO	0	Act. BW	87	106						
BUF CRK SHOSHONE R353			REA	13.12	Adj. WW	703	117						
LCC NEW CHAPTER A705L			RATIO	0	Adj. YW	1295							
MISS LL NEW 408 964678			MPPA	99.03	ADG	3.7	107						
MISS LL GRANITE 724					WDA	3.5	110						
CE SCORE	HB 187	%	GM 50	%									
GROWTH TRAITS				MATERNAL TRAITS				CARCASS TRAITS					
CED	BW	WW	YW	MILK	ME	HPG	CEM	STAY	MARB	YG	CW	REA	FAT
12	0.5	63	95	25	-3	9	7	17	0.5	0.12	14	-0.08	0.03
%	%	%	%	%	%	%	%	%	%	%	%	%	%



5L ADVANTAGE 3267-221Y

BD 3/2/11	FLR 221Y	#1450210	100% AR /CAT. A	Performance/Stats									
BUF CRK LANCER R017			%IMF	4.12		LBS	Ratio						
BUF CRK THE RIGHT KIND U199 1260155			RATIO	96	Act. BW	92	115						
BUF CRK SHOSHONE R353			REA	12.8	Adj. WW	775	116						
5L TRADITION 203-6145			RATIO	102	Adj. YW	1248	108						
5L ADINA 195-3267 1187800			MPPA	102	ADG	2.95	98						
5L ADINA 2113-195					WDA	3.35	107						
CE SCORE	HB 147	89 %	GM 53	7 %									
GROWTH TRAITS				MATERNAL TRAITS				CARCASS TRAITS					
CED	BW	WW	YW	MILK	ME	HPG	CEM	STAY	MARB	YG	CW	REA	FAT
11	-0.8	75	108	14	-8	6	8	11	0.53	0.08	11	-0.11	0.01
66 %	63 %	7 %	23 %	97 %	8 %	95 %	38 %	95 %	29 %	34 %	73 %	69 %	21 %



5L MTN TRADER 2173-7377

BD 2/20/07	5L1L 7377	#1187590	100% AR /CAT. A	Performance/Stats									
O C C LEGEND 616L			%IMF	3.61		LBS	Ratio						
5L TRADITION 203-6145 1048128			RATIO	98	Act. BW	83	98						
5L HAZEL 1821-203			REA	14.21	Adj. WW	719	105						
CKRA LONE MOUNTAIN 106			RATIO	109	Adj. YW	1257	108						
5L FIREFLY 420-2173 920968			MPPA	100	ADG	3.36	111						
5L FIREFLY 174-420					WDA	3.41	107						
CE SCORE	HB 162	%	GM 49	%									
GROWTH TRAITS				MATERNAL TRAITS				CARCASS TRAITS					
CED	BW	WW	YW	MILK	ME	HPG	CEM	STAY	MARB	YG	CW	REA	FAT
11	1.1	52	86	27	-1	12	6	15	0.37	0.06	10	0.06	0.03
%	%	%	%	%	%	%	%	%	%	%	%	%	%



GMRA DEUCES 2222

BD 1/14/12	GMRA 2222	#1525274	100% AR /CAT. A	Performance/Stats									
MESSMER PACKER S008			%IMF	5.52		LBS	Ratio						
GMRA TRILOGY 0226 1367533			RATIO	0	Act. BW	75	102						
GMRA LAKOTA 625			REA	12.13	Adj. WW	685	113						
GMRA LARAMIE 5110			RATIO	0	Adj. YW	1286	116						
GMRA PRIDSTOM 069 1367555			MPPA	101.95	ADG	3.74	120						
GMRA PRIDSTOM 727					WDA	3.24	113						
CE SCORE	HB 192	37 %	GM 51	25 %									
GROWTH TRAITS				MATERNAL TRAITS				CARCASS TRAITS					
CED	BW	WW	YW	MILK	ME	HPG	CEM	STAY	MARB	YG	CW	REA	FAT
10	-1.4	71	111	24	3	9	5	18	0.64	0.17	37	0.25	0.05
74 %	52 %	15 %	19 %	49 %	76 %	71 %	73 %	26 %	15 %	74 %	7 %	15 %	89 %



5L REFEREE 77-350W

BD 3/9/09	FLR 350W	#1330293	100% AR /CAT. A	Performance/Stats									
5L HERITAGE 1821-5985			%IMF	4.6		LBS	Ratio						
5L QUARTERBACK 1205-5337 1187543			RATIO	124	Act. BW	71	97						
5L SYBILLI 1593-1205			REA	11.52	Adj. WW	665	114						
5L SIGNATURE 5615			RATIO	102	Adj. YW	1075	103						
5L MATTIE 865-77 1187252			MPPA	100	ADG	2.55	89						
5L MATTIE 708-865					WDA	2.76	98						
CE SCORE	HB 185	%	GM 50	%									
GROWTH TRAITS				MATERNAL TRAITS				CARCASS TRAITS					
CED	BW	WW	YW	MILK	ME	HPG	CEM	STAY	MARB	YG	CW	REA	FAT
12	0.9	56	85	30	4	10	5	18	0.71	0.14	7	-0.08	0.05
%	%	%	%	%	%	%	%	%	%	%	%	%	%



5L NIGHT WATCH 203-04T

BD 8/21/07	FLR 04T	#1230807	100% AR /CAT. 2	Performance/Stats									
O C C LINEBRED 661L			%IMF			LBS	Ratio						
O C C NIGHT WATCH 902N 3315420			RATIO		Act. BW	76							
O C C PRIMROSE 931L			REA		Adj. WW	568							
5L NORSEMAN KING 2291			RATIO		Adj. YW								
5L HAZEL 1821-203 920954			MPPA	97.04	ADG								
5L HAZEL 45-1821					WDA								
CE SCORE	HB 178	%	GM 49	%									
GROWTH TRAITS				MATERNAL TRAITS				CARCASS TRAITS					
CED	BW	WW	YW	MILK	ME	HPG	CEM	STAY	MARB	YG	CW	REA	FAT
14	-2.7	39	71	27	-5	11	6	16	0.4	-0.03	10	0.22	0.01
%	%	%	%	%	%	%	%	%	%	%	%	%	%

Sale Day Photos





4 Generations of Woods

The Top Jack Cow Family



Beautiful prospect expected due date approximately Jan. 15th to Spur Franchise of Garton, Reg. #3469042

Lot 1		LASO TOPJACK A171D													
BD 1/4/16	LASO A171D	#3549939	100% AR /CAT. A							Performance/Stats					
C-BAR ANTICIPATION 101W			%IMF	5.69		LBS	Ratio								
C-BAR ELDORADO 114Z		1551454	RATIO	114	Act. BW	70									
C-BAR STONY W914			REA	9.1	Adj. WW	520									
LMAN KING ROB 8621			RATIO	104	Adj. YW	822									
LASO TOPJACK BD 145W		1321402	MPPA	102.73	ADG	1.88									
LCC TOPJACK LA073					WDA	2.18									
CE SCORE	HB 155	83 %	GM 50	27 %											
GROWTH TRAITS				MATERNAL TRAITS					CARCASS TRAITS						
CED	BW	WW	YW	MILK	ME	HPG	CEM	STAY	MARB	YG	CW	REA	FAT		
12	-1.2	61	98	19	9	13	8	13	0.52	0.13	7	-0.15	0.04		
59 %	53 %	36 %	32 %	93 %	99 %	15 %	23 %	89 %	21 %	68 %	88 %	84 %	77 %		



Circuit Breaker prospect expected due date approximately April 1st to Spur Franchise of Garton, Reg. #3469042

Lot 2		LASO TOPJACK Z136D													
BD 12/29/15	LASO Z136D	#3549851	100% AR /CAT. A							Performance/Stats					
GMRA DEUCES 2222			%IMF	6.42		LBS	Ratio								
LASO DEUCES T69B		1697298	RATIO	110	Act. BW	71	92								
LASO TOWKANA XC124T			REA	8.69	Adj. WW	549	92								
5L NIGHT WATCH 203-04T			RATIO	84	Adj. YW	802	91								
LASO TOPJACK X2Z		1548468	MPPA	97.09	ADG	1.54	87								
LASO TOPJACK BB47X					WDA	2.1	89								
CE SCORE	HB 142	92 %	GM 50	21 %											
GROWTH TRAITS				MATERNAL TRAITS					CARCASS TRAITS						
CED	BW	WW	YW	MILK	ME	HPG	CEM	STAY	MARB	YG	CW	REA	FAT		
10	-1.6	52	89	30	2	8	6	13	0.59	0.09	24	0.15	0.03		
74 %	37 %	66 %	47 %	10 %	56 %	92 %	65 %	89 %	7 %	44 %	15 %	11 %	71 %		



LASO Top Jack BB47X - Grand Dam of Lot 2



LCC Top Jack LA073
Matriarch of the Topjack Cow Family

Lot
3

LASO TOPJACK W189B

BD 2/9/14	LASO W189B	#1697334	100% AR /CAT. A	Performance/Stats									
5L TRADITION 203-6145			%IMF	6.15	LBS	Ratio							
5L MTN TRADER 2173-7377 1187590			RATIO	108	Act. BW	86	107						
5L FIREFLY 420-2173			REA	11.8	Adj. WW	672	106						
LMAN KING ROB 8621			RATIO	109	Adj. YW	885	101						
LASO TOPJACK BB 49W 1321407			MPPA	103.64	ADG	1.28	87						
LCC TOPJACK LA073					WDA	2.38	100						
CE SCORE	HB 173	60 %	GM 50	15 %									
GROWTH TRAITS			MATERNAL TRAITS				CARCASS TRAITS						
CED	BW	WW	YW	MILK	ME	HPG	CEM	STAY	MARB	YG	CW	REA	FAT
7	2.2	58	95	18	5	12	6	17	0.44	0.06	17	0.08	0.02
96 %	96 %	39 %	29 %	93 %	83 %	36 %	71 %	53 %	26 %	24 %	40 %	20 %	42 %



Due approximately March 1st to 5L Blockade 214-75D,
Reg # 3565061

Lot
4

LASO BLACK JACK X20C

BD 3/13/15	LASO X20C	#3481104	100% AR /CAT. 2	Performance/Stats									
5L NIGHT WATCH 203-04T			%IMF	6.91	LBS	Ratio							
5L NIGHTWATCH 6120-454Z 1549719			RATIO	117	Act. BW	78	104						
5L SUNBURST 2705-6120			REA	11.36	Adj. WW	658	98						
5L SIGNATURE 5615			RATIO	109	Adj. YW								
LASO BLACK JACK U100X 1388701			MPPA	98.55	ADG	0							
LASO BLACKJACK BA44T					WDA	0							
CE SCORE	HB 172	61 %	GM 50	24 %									
GROWTH TRAITS			MATERNAL TRAITS				CARCASS TRAITS						
CED	BW	WW	YW	MILK	ME	HPG	CEM	STAY	MARB	YG	CW	REA	FAT
14	-2.7	50	83	29	0	10	8	15	0.63	0.08	14	0.12	0.04
24 %	19 %	75 %	63 %	17 %	41 %	61 %	18 %	74 %	5 %	35 %	53 %	15 %	83 %



Due approx. March 15th to PIE Payweight 6348,
Reg # 3592128

Lot
5

LASO TOP JACK BA 24W

BD 1/10/09	LASO BA24W	#1321404	100% AR /CAT. A	Performance/Stats									
LEACHMAN ROBUST 7222			%IMF	2.56	LBS	Ratio							
LMAN KING ROB 8621 335067			RATIO	69	Act. BW	91							
LEACHMAN ELEANOR			REA	9.64	Adj. WW	590							
BJR MAKE MY DAY 981			RATIO	100	Adj. YW	808							
LCC TOPJACK LA073 790927			MPPA	102.88	ADG	1.36							
LCHMN TOPJACK E1048					WDA	2.26							
CE SCORE	HB 158	80 %	GM 50	22 %									
GROWTH TRAITS			MATERNAL TRAITS				CARCASS TRAITS						
CED	BW	WW	YW	MILK	ME	HPG	CEM	STAY	MARB	YG	CW	REA	FAT
5	1.9	64	109	26	13	12	6	16	0.2	0.12	24	-0.02	0.02
99 %	94 %	14 %	6 %	40 %	99 %	37 %	73 %	65 %	91 %	65 %	16 %	41 %	45 %



Due approx. April 1st to 5L Blockade 214-75D,
Reg # 3565061

The Dory Jiba Cow Family



Due approx. February 1st to Spur Franchise of Garton,
Reg # 3469042 - Dam of Lot 6A

Lot		LASO DORY JIBA W176A												
6														
BD 1/25/13	LASO W176A	#1628612	100% AR /CAT. A						Performance/Stats					
		BUF CRK THE RIGHT KIND U199	%IMF	5.03						LBS	Ratio			
		LOOSLI RIGHT KIND 112	1432590	RATIO	109	Act. BW	91	111						
		MISS LL NEW 408		REA	10.19	Adj. WW	670	109						
		5L SIGNATURE 5615		RATIO	103	Adj. YW	898	107						
		LASO DORY JIBA BD143W	1321405	MPPA	106.67	ADG	1.38	101						
		LCHMN DORYJIBA J1265				WDA	2.36	104						
CE SCORE		HB 162	75 %	GM 51	6 %									
GROWTH TRAITS				MATERNAL TRAITS					CARCASS TRAITS					
CED	BW	WW	YW	MILK	ME	HPG	CEM	STAY	MARB	YG	CW	REA	FAT	
9	2.3	69	108	32	0	11	6	15	0.53	0.13	17	-0.02	0.03	
83 %	96 %	5 %	7 %	5 %	38 %	50 %	74 %	81 %	12 %	67 %	38 %	41 %	78 %	



HXC Justice 4017B, Reg # 1719138 - Sire of Lot 6A
Open Heifer

Lot		LASO DORY JIBA A192F												
6A														
BD 3/12/18	LASO A192F	#3932119	100% AR /CAT. A						Performance/Stats					
		BECKTON JULIAN GG B571	%IMF							LBS	Ratio			
		HXC JUSTICE 4017B	1719138	RATIO		Act. BW	96	126						
		HXC JAYLO LB136		REA		Adj. WW	698	116						
		LOOSLI RIGHT KIND 112		RATIO		Adj. YW								
		LASO DORY JIBA W176A	1628612	MPPA	110.18	ADG	0							
		LASO DORY JIBA BD143W				WDA	0							
CE SCORE		HB 172	60 %	GM 53	3 %									
GROWTH TRAITS				MATERNAL TRAITS					CARCASS TRAITS					
CED	BW	WW	YW	MILK	ME	HPG	CEM	STAY	MARB	YG	CW	REA	FAT	
9	2.3	75	116	25	-1	12	4	15	0.57	0.1	15	0.01	0.03	
89 %	98 %	2 %	4 %	43 %	42 %	34 %	94 %	68 %	15 %	47 %	58 %	44 %	62 %	



5L Defender 560-30Z, Reg # 1549933 - Sire of Lot 7

Lot		LASO DORY JIBA B29D												
7														
BD 12/27/15	LASO B29D	#3549887	100% AR /CAT. A						Performance/Stats					
		5L ADVOCATE 817-14W	%IMF	7.45						LBS	Ratio			
		5L DEFENDER 560-30Z	1549933	RATIO	143	Act. BW	71	98						
		5L BLACK ADINA 525-560		REA	10.15	Adj. WW	616	108						
		C-BAR ELDORADO 114Z		RATIO	105	Adj. YW	892	110						
		LASO DORY JIBA Z141B	1697291	MPPA	105.33	ADG	1.73	115						
		LASO DORY JIBA X22Z				WDA	2.25	110						
CE SCORE		HB 172	62 %	GM 54	1 %									
GROWTH TRAITS				MATERNAL TRAITS					CARCASS TRAITS					
CED	BW	WW	YW	MILK	ME	HPG	CEM	STAY	MARB	YG	CW	REA	FAT	
18	-3	63	104	23	-1	14	8	12	1.04	0.04	17	0.07	0.01	
3 %	15 %	20 %	13 %	63 %	32 %	15 %	21 %	96 %	1 %	15 %	41 %	22 %	16 %	

Lot
8

LASO DORY JIBA W176Z

BD 1/24/12	LASO W176Z	#1548491	100% AR /CAT. A	Performance/Stats									
5L TRADITION 203-6145			%IMF	4.65	LBS	Ratio							
5L MTN TRADER 2173-7377 1187590			RATIO	102	Act. BW	82	110						
5L FIREFLY 420-2173			REA	9.84	Adj. WW	711	111						
5L SIGNATURE 5615			RATIO	95	Adj. YW	990	112						
LASO DORY JIBA BD143W 1321405			MPPA	106.67	ADG	1.71	115						
LCHMN DORYJIBA J1265					WDA	2.59	110						
CE SCORE	HB 159	78 %	GM 50	17 %									
GROWTH TRAITS			MATERNAL TRAITS				CARCASS TRAITS						
CED	BW	WW	YW	MILK	ME	HPG	CEM	STAY	MARB	YG	CW	REA	FAT
11	1.6	62	101	28	0	12	6	14	0.37	0.14	23	0.09	0.04
70 %	92 %	23 %	16 %	22 %	42 %	32 %	74 %	84 %	42 %	74 %	18 %	19 %	92 %



Due approx. April 1st to Spur Franchise of Garton, Reg # 3469042

Lot
9

LASO DORY JIBA BC86X

BD 1/8/10	LASO BC86X	#1388782	100% AR /CAT. 2	Performance/Stats									
O C C LEGEND 616L			%IMF	3.68	LBS	Ratio							
5L TRADITION 203-6145 1048128			RATIO	103	Act. BW	92							
5L HAZEL 1821-203			REA	10.73	Adj. WW	640							
LCHMAN.ABOVEHEAVEN1018F			RATIO	102	Adj. YW	866							
LCHMN DORYJIBA J1265 676966			MPPA	100	ADG	1.41							
LARSON DORYJIBA 390					WDA	2.37							
CE SCORE	HB 174	58 %	GM 50	14 %									
GROWTH TRAITS			MATERNAL TRAITS				CARCASS TRAITS						
CED	BW	WW	YW	MILK	ME	HPG	CEM	STAY	MARB	YG	CW	REA	FAT
13	0.2	52	91	27	-1	11	6	16	0.46	0.19	18	-0.14	0.04
36 %	75 %	65 %	40 %	28 %	35 %	50 %	56 %	70 %	22 %	93 %	36 %	72 %	92 %



Due approx. April 1st to 5L Blockade 214-75D, Reg # 3565061 - Full sister to Lot 10 - Donor Cow

Lot
10

LASO DORY JIBA T46X

BD 1/10/10	LASO T46X	#1388783	100% AR /CAT. A	Performance/Stats									
O C C LEGEND 616L			%IMF	4.18	LBS	Ratio							
5L TRADITION 203-6145 1048128			RATIO	119	Act. BW	78							
5L HAZEL 1821-203			REA	7.67	Adj. WW	538							
LCHMAN.ABOVEHEAVEN1018F			RATIO	83	Adj. YW	674							
LCHMN DORYJIBA J1265 676966			MPPA	100	ADG	0.85							
LARSON DORYJIBA 390					WDA	1.84							
CE SCORE	HB 150	87 %	GM 48	67 %									
GROWTH TRAITS			MATERNAL TRAITS				CARCASS TRAITS						
CED	BW	WW	YW	MILK	ME	HPG	CEM	STAY	MARB	YG	CW	REA	FAT
13	-0.4	47	76	27	0	11	6	14	0.48	0.19	8	-0.26	0.04
40 %	63 %	83 %	78 %	29 %	36 %	50 %	73 %	85 %	19 %	92 %	78 %	92 %	91 %



Due approx. March 1st to 5L Defender 5382-881D, Reg # 3577298 - Full sister to Lot 9

The Dory Jiba Cow Family

Embryo EPD

Sire: 9 Mile Franchise #3555188 x Dam: ADHM Stoney 503C #1739636



GROWTH TRAITS				MATERNAL TRAITS				CARCASS TRAITS					
CED	BW	WW	YW	MILK	ME	HPG	CEM	STAY	MARB	YG	CW	REA	FAT
14	-1.8	60	101	26	-2	14	7	14	0.34	0.05	19	0.22	0.03



Sire of lots 11 and 12: 9 Mile Franchise, Reg # 3555188



Dam of Lots 11 and 12: ADHM Stoney 503C, Reg #1739636



Lot 11 *Recip* **LASO DORY JIBA T38B**

BD	12/26/13	LASO T38B	#	1697304	100% AR/CAT. A	Performance/Stats							
		C-BAR ANTICIPATION 101W			%IMF	6.51		LBS	Ratio				
		C-BAR ELDORADO 114Z		1551454	RATIO	101	Act. BW	77					
		C-BAR STONY W914			REA	10.8	Adj. WW	548					
		5L SIGNATURE 5615			RATIO	100	Adj. YW	771					
		LASO DORY JIBA DR125T		1162781	MPPA	102.82	ADG	1.33					
		LCHMN DORYJIBA J1265					WDA	2.1					
CE SCORE	HB 134	95 %	GM 51	11 %									
GROWTH TRAITS			MATERNAL TRAITS				CARCASS TRAITS						
CED	BW	WW	YW	MILK	ME	HPG	CEM	STAY	MARB	YG	CW	REA	FAT
13	-1.1	57	93	28	4	14	7	10	0.67	0.1	15	-0.07	0.02
35 %	48 %	42 %	36 %	21 %	71 %	9 %	36 %	99 %	3 %	54 %	48 %	54 %	48 %

Laso Dory Jiba T38B - Pregnant recip carrying a 1/15/18 ADHM Stoney 503C embryo X 9 Mile Franchise



LASO Tow Kana Y86C - Pregnant recip carrying a 1/15/18 ADHM Stoney 503C embryo X 9 Mile Franchise

Lot 12 *Recip* **LASO TOW KANA Y86C**

BD	1/30/15	LASO Y86C	#	3481091	100% AR/CAT. A	Performance/Stats							
		GMRA TRILOGY 0226			%IMF	4.7		LBS	Ratio				
		GMRA DEUCES 2222		1525274	RATIO	80	Act. BW	86	116				
		GMRA PRIDSTOM 069			REA	9.98	Adj. WW	613	95				
		BUF CRK HOBO 1961			RATIO	98	Adj. YW						
		LASO TOW KANA W196Y		1447513	MPPA	98.46	ADG	0					
		LASO TOWKANA T63W					WDA	0					
CE SCORE	HB 180	49 %	GM 48	57 %									
GROWTH TRAITS			MATERNAL TRAITS				CARCASS TRAITS						
CED	BW	WW	YW	MILK	ME	HPG	CEM	STAY	MARB	YG	CW	REA	FAT
10	-2	54	86	25	2	8	5	19	0.4	0.13	21	-0.02	0.03
74 %	30 %	57 %	55 %	45 %	57 %	88 %	87 %	25 %	34 %	72 %	25 %	41 %	73 %

Lot 13

LASO TOW KANA W196Y

BD 1/7/11	LASO W196Y	#1447513	100% AR /CAT. A	Performance/Stats									
BUF CRK HOBO 1413			%IMF	3.89	LBS	Ratio							
BUF CRK HOBO 1961 307777			RATIO	111	Act. BW	59	81						
BUF CR CARRIE VC1174			REA	9.99	Adj. WW	582	97						
BJR RAMBLER 5162			RATIO	92	Adj. YW	817	97						
LASO TOWKANA T63W 1321360			MPPA	99.43	ADG	1.47	97						
LASO TOWKANA BE181T					WDA	2.04	97						
CE SCORE	HB 186	38 %	GM 46	86 %									
GROWTH TRAITS			MATERNAL TRAITS				CARCASS TRAITS						
CED	BW	WW	YW	MILK	ME	HPG	CEM	STAY	MARB	YG	CW	REA	FAT
14	-3.9	44	71	23	1	9	7	19	0.27	0.11	9	-0.24	0.01
23 %	7 %	89 %	86 %	66 %	46 %	78 %	34 %	27 %	73 %	60 %	73 %	90 %	25 %



Due approx. February 1st to PIE Payweight 6348, Reg # 3592128

Lot 14

LASO TOW KANA W198B

BD 3/4/14	LASO W198B	#1697391	100% AR /CAT. A	Performance/Stats									
GMRA TRILOGY 0226			%IMF	6.51	LBS	Ratio							
GMRA DEUCES 2222 1525274			RATIO	123	Act. BW	71	88						
GMRA PRIDSTOM 069			REA	10.92	Adj. WW	656	104						
5L EXPLORER 40-5356			RATIO	103	Adj. YW	917	105						
LASO TOW KANA T69W 1321392			MPPA	100.77	ADG	1.58	107						
LASO TOWKANA XC124T					WDA	2.48	105						
CE SCORE	HB 185	40 %	GM 49	43 %									
GROWTH TRAITS			MATERNAL TRAITS				CARCASS TRAITS						
CED	BW	WW	YW	MILK	ME	HPG	CEM	STAY	MARB	YG	CW	REA	FAT
13	-3	56	89	24	4	9	6	18	0.61	0.19	32	0.11	0.05
31 %	15 %	49 %	45 %	56 %	70 %	77 %	65 %	34 %	6 %	93 %	3 %	16 %	97 %



Due approx. February 15th to 5L Defender 5382-881D, Reg # 3577298



The Leanna Cow Family

LASO Leanna BC 114R

needs no introduction. She has been and still is making waves across the country.



Add the "Carcass King" Spur Franchise of Garton to the equation and you rock the breed!!!

Here are two gems to prove it!



Lot 15

LASO LEANNA W188F

BD 1/8/18	LASO W188F	#3932049	100% AR /CAT. A	Performance/Stats											
SPUR FRANCHISE 7070				%IMF			LBS	Ratio							
SPUR FRANCHISE OF GARTON 3469042				RATIO		Act. BW	73								
H & H IRENE LASS 0135				REA		Adj. WW	543								
BASIN HOBO 79E				RATIO		Adj. YW									
LASO LEANNA BC114R 1048957				MPPA	104.91	ADG	0								
LASO LEANNA BC 114						WDA	0								
CE SCORE	HB 191	25 %	GM 52	5 %											
GROWTH TRAITS				MATERNAL TRAITS				CARCASS TRAITS							
CED	BW	WW	YW	MILK	ME	HPG	CEM	STAY	MARB	YG	CW	REA	FAT		
16	-3.3	55	93	28	-2	10	8	16	0.77	0.06	37	0.39	0.03		
12 %	14 %	61 %	48 %	13 %	29 %	54 %	22 %	52 %	2 %	23 %	2 %	2 %	57 %		

Lot 16

LASO LEANNA B11F

BD 1/8/18	LASO B11F	#3932131	100% AR /CAT. 2	Performance/Stats											
SPUR FRANCHISE 7070				%IMF			LBS	Ratio							
SPUR FRANCHISE OF GARTON 3469042				RATIO		Act. BW	75								
H & H IRENE LASS 0135				REA		Adj. WW	583								
BASIN HOBO 79E				RATIO		Adj. YW									
LASO LEANNA BC114R 1048957				MPPA	104.91	ADG	0								
LASO LEANNA BC 114						WDA	0								
CE SCORE	HB 194	21 %	GM 53	3 %											
GROWTH TRAITS				MATERNAL TRAITS				CARCASS TRAITS							
CED	BW	WW	YW	MILK	ME	HPG	CEM	STAY	MARB	YG	CW	REA	FAT		
16	-3	59	97	27	-2	10	8	16	0.77	0.06	37	0.39	0.03		
12 %	18 %	45 %	34 %	19 %	29 %	54 %	22 %	52 %	2 %	23 %	2 %	2 %	57 %		

Lot 15 and 16 are open ET heifer calf flushmates

Musgrave Aviator

A phenotypic favorite of cowmen that visit ORigen with medium frame size, great depth of body and visually appealing thickness with a robust ribcage and muscle down his top that carries depth down into his lower quarter - this bull is full of meat.

A "sleep-all-night" calving ease bull with high accuracy double-digit Calving Ease Direct and minus Birth Weight EPDs, great feet and docile disposition, Aviator offers a unique combination of balancing calving ease, muscle and phenotype.



Lot 17													
LASO LEANNA C114F													
BD 1/24/18		LASO C114F		#3932225		100% AR /CAT. 2				Performance/Stats			
KROUPALS B&B IDENTITY						%IMF				LBS		Ratio	
MUSGRAVE AVIATOR 3320483						RATIO		Act. BW		66			
MCATL FOREVER LADY 1429-138						REA		Adj. WW		510			
BASIN HOBO 79E						RATIO		Adj. YW					
LASO LEANNA BC114R 1048957						MPPA		104.91		ADG		0	
LASO LEANNA BC 114										WDA		0	
CE SCORE		HB 218 3 %		GM 51 16 %									
GROWTH TRAITS				MATERNAL TRAITS				CARCASS TRAITS					
CED	BW	WW	YW	MILK	ME	HPG	CEM	STAY	MARB	YG	CW	REA	FAT
18	-4.1	57	94	30	-1	10	11	19	0.6	0.14	31	0.22	0.05
3 %	7 %	56 %	42 %	7 %	46 %	62 %	1 %	14 %	11 %	71 %	7 %	9 %	93 %

Lot 18													
LASO LEANNA C116F													
BD 1/22/18		LASO C116F		#3932197		100% AR /CAT. 2				Performance/Stats			
KROUPALS B&B IDENTITY						%IMF				LBS		Ratio	
MUSGRAVE AVIATOR 3320483						RATIO		Act. BW		73			
MCATL FOREVER LADY 1429-138						REA		Adj. WW		545			
BASIN HOBO 79E						RATIO		Adj. YW					
LASO LEANNA BC114R 1048957						MPPA		104.91		ADG		0	
LASO LEANNA BC 114										WDA		0	
CE SCORE		HB 219 2 %		GM 51 13 %									
GROWTH TRAITS				MATERNAL TRAITS				CARCASS TRAITS					
CED	BW	WW	YW	MILK	ME	HPG	CEM	STAY	MARB	YG	CW	REA	FAT
18	-3.9	58	97	29	-1	10	11	19	0.6	0.14	31	0.22	0.05
3 %	8 %	49 %	36 %	8 %	46 %	62 %	1 %	14 %	11 %	71 %	7 %	9 %	93 %

Lot 17 and 18 are open ET heifer calf flushmates

Lot 19													
LASO LEANNA BE184X													
BD 1/13/10		LASO BE184X		#1388713		100% AR /CAT. 2				Performance/Stats			
O C C LEGEND 616L						%IMF		4.45		LBS		Ratio	
5L TRADITION 203-6145 1048128						RATIO		120		Act. BW		76 99	
5L HAZEL 1821-203						REA		10.69		Adj. WW		631 101	
BASIN HOBO 79E						RATIO		106		Adj. YW		805 99	
LASO LEANNA BC114R 1048957						MPPA		104.91		ADG		1.03 93	
LASO LEANNA BC 114										WDA		2.13 98	
CE SCORE		HB 196 23 %		GM 49 40 %									
GROWTH TRAITS				MATERNAL TRAITS				CARCASS TRAITS					
CED	BW	WW	YW	MILK	ME	HPG	CEM	STAY	MARB	YG	CW	REA	FAT
15	-2.2	46	78	29	-3	9	5	19	0.54	0.12	9	-0.07	0.04
15 %	26 %	85 %	75 %	16 %	21 %	73 %	78 %	21 %	11 %	61 %	75 %	54 %	83 %



DONOR PROSPECT!
Due approx. February 15th to 5L Defender 5382-881D,
Reg # 3577298

The JR J920 Cow Family



Due approx. March 15th to 5L Defender 5382-881D,
Reg # 3577298

Lot 20													
LASO MISSY B34D													
BD 2/4/16		LASO B34D		#3549891		100% AR /CAT. A				Performance/Stats			
		5L NIGHT WATCH 203-04T				%IMF		3.43				LBS Ratio	
		5L NIGHTWATCH 6120-454Z		1549719		RATIO		66		Act. BW		62 88	
		5L SUNBURST 2705-6120				REA		6.97		Adj. WW		481 85	
		5L MTN TRADER 2173-7377				RATIO		72		Adj. YW		685 85	
		LASO MISSY S22B		1697369		MPPA		96		ADG		1.28 85	
		LASO MISSY DR142S								WDA		1.71 84	
CE SCORE		HB 181 46 %		GM 45 98 %									
GROWTH TRAITS				MATERNAL TRAITS				CARCASS TRAITS					
CED	BW	WW	YW	MILK	ME	HPG	CEM	STAY	MARB	YG	CW	REA	FAT
16	-4.7	35	56	30	0	10	8	18	0.32	0.17	12	-0.28	0.03
8 %	3 %	99 %	97 %	14 %	41 %	65 %	32 %	31 %	58 %	88 %	61 %	94 %	61 %



Due January 15th to 5L Defender 5382-8810,
Reg # 3577298 - Daughter of Lot 22

Lot 21													
LASO MISSY S22B													
BD 3/2/14		LASO S22B		#1697369		100% AR /CAT. A				Performance/Stats			
		5L TRADITION 203-6145				%IMF		5.12				LBS Ratio	
		5L MTN TRADER 2173-7377		1187590		RATIO		96		Act. BW		78 97	
		5L FIREFLY 420-2173				REA		10.48		Adj. WW		659 104	
		5L POWER STROKE 2549				RATIO		99		Adj. YW		889 101	
		LASO MISSY DR142S		1106350		MPPA		103.52		ADG		1.38 93	
		LONK MISS JR J920								WDA		2.4 101	
CE SCORE		HB 184 41 %		GM 46 88 %									
GROWTH TRAITS				MATERNAL TRAITS				CARCASS TRAITS					
CED	BW	WW	YW	MILK	ME	HPG	CEM	STAY	MARB	YG	CW	REA	FAT
12	-0.3	48	72	26	1	11	6	19	0.42	0.16	10	-0.23	0.03
51 %	65 %	82 %	84 %	42 %	50 %	39 %	71 %	24 %	30 %	85 %	71 %	89 %	78 %



Due approx. February 1st to 5L Blockade 214-75D,
Reg # 3565061 - Dam of Lot 21

Lot 22													
LASO MISSY DR142S													
BD 1/27/06		LASO6 DR142S		#1106350		100% AR /CAT. A				Performance/Stats			
		LCHMN GRANDCANYON 1244G				%IMF		6.08				LBS Ratio	
		5L POWER STROKE 2549		742439		RATIO		118		Act. BW		81 98	
		5L FIREFLY 66-32				REA		8.69		Adj. WW		616 96	
		BJR JR 107				RATIO		87		Adj. YW		846 94	
		LONK MISS JR J920		656713		MPPA		95.79		ADG		1.44 87	
		BTH MISS HISCOPE 46								WDA		2.36 94	
CE SCORE		HB 198 20 %		GM 46 94 %									
GROWTH TRAITS				MATERNAL TRAITS				CARCASS TRAITS					
CED	BW	WW	YW	MILK	ME	HPG	CEM	STAY	MARB	YG	CW	REA	FAT
11	-0.5	46	66	30	5	11	6	21	0.57	0.24	12	-0.41	0.04
61 %	61 %	87 %	92 %	11 %	78 %	44 %	63 %	5 %	8 %	98 %	64 %	99 %	87 %

Lot
23

LASO MISS BUD Y62C

BD 2/7/15	LASO Y62C	#3481132	100% AR /CAT. A	Performance/Stats									
BUF CRK THE RIGHT KIND U199			%IMF	4.22	LBS	Ratio							
LOOSLI RIGHT KIND 112 1432590			RATIO	72	Act. BW	88	120						
MISS LL NEW 408			REA	11.63	Adj. WW	650	101						
RED BAR-E-L WALKER 43W			RATIO	114	Adj. YW								
LASO MISS BUD BE189Y 1447456			MPPA	92.73	ADG	0							
LASO MISS BUD DR142R					WDA	0							
CE SCORE	HB 185	40 %	GM 48	51 %									
GROWTH TRAITS			MATERNAL TRAITS				CARCASS TRAITS						
CED	BW	WW	YW	MILK	ME	HPG	CEM	STAY	MARB	YG	CW	REA	FAT
9	2.5	62	91	22	-4	10	6	19	0.36	0.06	8	-0.07	0.02
88 %	97 %	22 %	41 %	70 %	17 %	69 %	63 %	27 %	45 %	26 %	78 %	54 %	30 %



Due approx. February 15th to 5L Defender 5382-881D, Reg # 3577298

Lot
24

LASO STAR POWER Z144C

BD 2/4/15	LASO Z144C	#3481142	100% AR /CAT. A	Performance/Stats									
BUF CRK THE RIGHT KIND U199			%IMF	5.71	LBS	Ratio							
LOOSLI RIGHT KIND 112 1432590			RATIO	98	Act. BW	87	122						
MISS LL NEW 408			REA	9.67	Adj. WW	701	109						
LASO TRADITION S3X			RATIO	95	Adj. YW								
LASO STAR POWER BD152Z 1548472			MPPA	97.33	ADG	0							
LASO STAR GAZER BB74P					WDA	0							
CE SCORE	HB 178	52 %	GM 50	17 %									
GROWTH TRAITS			MATERNAL TRAITS				CARCASS TRAITS						
CED	BW	WW	YW	MILK	ME	HPG	CEM	STAY	MARB	YG	CW	REA	FAT
10	2.1	67	104	23	0	10	6	17	0.44	0.17	21	-0.14	0.03
82 %	95 %	8 %	13 %	64 %	37 %	69 %	73 %	51 %	26 %	88 %	23 %	72 %	66 %



Due approx. February 1st to 5L Defender 5382-881D, Reg # 3577298

Lot
25

LASO MISS JR X18B

BD 12/24/13	LASO X18B	#1697352	100% AR /CAT. A	Performance/Stats									
C-BAR ANTICIPATION 101W			%IMF	4.25	LBS	Ratio							
C-BAR ELDORADO 114Z 1551454			RATIO	75	Act. BW	85	108						
C-BAR STONY W914			REA	10.83	Adj. WW	633	99						
5L SIGNATURE 5615			RATIO	100	Adj. YW	920	105						
LASO MISS JR BC92X 1388777			MPPA	96	ADG	1.75	119						
LONK MISS JR J961					WDA	2.42	102						
CE SCORE	HB 136	95 %	GM 51	5 %									
GROWTH TRAITS			MATERNAL TRAITS				CARCASS TRAITS						
CED	BW	WW	YW	MILK	ME	HPG	CEM	STAY	MARB	YG	CW	REA	FAT
12	-0.3	60	96	21	4	14	6	10	0.51	0.06	16	0.07	0.02
49 %	65 %	32 %	28 %	81 %	71 %	9 %	63 %	98 %	14 %	26 %	43 %	22 %	45 %



Due approx. April 1st to PIE Payweight 6348, Reg # 3592128

Research Validates Red Angus as Most-Favored Female

Ranchers across the country have long recognized the value of Red Angus females as the foundation of a profitable cowherd. Now, independent research validates those years of cattle production experience with tangible data proving the Red Angus heifer's worth.

Research Confirmation

Esther McCabe, et al., of Kansas State University, led a study that confirmed Red Angus are the most-favored female in the industry. McCabe and her team compiled five years' worth of pricing data from Superior Livestock Auction, comparing 13,804 lots of heifer calves totaling over 1.2 million head that sold in 116 video auctions.

The research team evaluated the effects of independent variables on the sale price of heifer calves that fell into six different breed composition groups: English, English crosses, English-Continental crosses, Black Angus-sired out of dams with no Brahman influence, Red Angus-sired out of dams with no Brahman influence, and Brahman-influenced.

They deduced that Red Angus-sired heifer calves bring \$5 to \$9 more per hundredweight than all other breed types.

Rancher Trusted

While market research validates the price advantage of Red Angus heifers, ranchers have tested and trusted her worth on the range for years. Red Angus females are desirable as replacement heifers because they mature into productive mother cows that reward producers with extra dollars in their pockets on sale day.

Red Angus cows have gained ranchers' trust as a complete package through fertility, fleshing ability, good disposition, longevity and excellent overall production. They produce feeder calves that earn premiums in the yard and on the rail through docility, feed efficiency, conversion and carcass merit.

Over the years, stockmen have voted with their checkbooks, purchasing heifers they know will bring profitability to their ranching businesses – and Red Angus females are their most-favored choice. ■



Independent research studying five years of Superior Livestock Auction data confirms the value of Red Angus replacement females.

Red Angus Stockyard

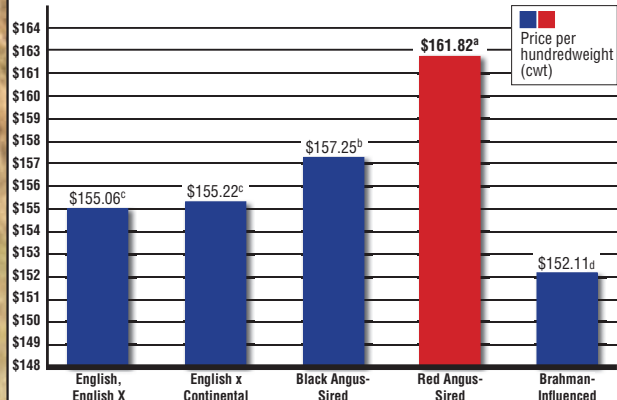
List or locate quality Red Angus replacement females at stockyard.redangus.org. Over 20,000 head of cattle are sold each year through the Red Angus Stockyard.

FeMail

An electronic tool to help locate or market ranch-tested replacements. Market your open heifers, bred heifers or cows, or cow-calf pairs. FeMails are designed for offerings of 25 head of more to complement listings on the Red Angus Stockyard.



Breed and Gender Interact to Affect the Sale Price of Beef Heifer Calves*



* McCabe, et al., 2016. Breed and gender interact to affect the sale price of beef calves sold through video auctions from 2010 through 2014. J. Animal Science, Volume 94, Supplement 2, pp 28.
^{abcd} Means with unlike superscripts differ (P<0.05).

Lot
26

LASO PATSY GE193C

BD 1/26/15	LASO GE193C	#3481126	100% AR /CAT. A	Performance/Stats									
5L NIGHT WATCH 203-04T			%IMF	5.29	LBS	Ratio							
5L NIGHTWATCH 6120-454Z 1549719			RATIO	91	Act. BW	70	95						
5L SUNBURST 2705-6120			REA	9.41	Adj. WW	597	92						
5L POWER STROKE 2549			RATIO	92	Adj. YW								
LASO PATSY DR152R 1031402			MPPA	96.71	ADG	0							
5L PATSY 537-79					WDA	0							
CE SCORE	HB 184	42 %	GM 47	85 %									
GROWTH TRAITS			MATERNAL TRAITS				CARCASS TRAITS						
CED	BW	WW	YW	MILK	ME	HPG	CEM	STAY	MARB	YG	CW	REA	FAT
14	-4.3	41	69	27	3	10	8	18	0.42	0.19	13	-0.25	0.03
21 %	5 %	94 %	89 %	28 %	64 %	67 %	30 %	31 %	30 %	92 %	57 %	91 %	80 %



Due approx. March 15th to 5L Defender 5382-881D,
Reg # 3577298

Lot
27

LASO DYNAMO U112Z

BD 2/13/12	LASO U112Z	#1548513	100% AR /CAT. A	Performance/Stats									
5L QUARTERBACK 1205-5337			%IMF	4.02	LBS	Ratio							
5L REFEREE 77-350W 1330293			RATIO	86	Act. BW	85	110						
5L MATTIE 865-77			REA	11.21	Adj. WW	640	101						
5L TRADITION 203-6145			RATIO	111	Adj. YW	860	102						
LASO DYNAMO GE193U 1241804			MPPA	98.4	ADG	1.33	103						
LASO PATSY DR152R					WDA	2.28	99						
CE SCORE	HB 174	58 %	GM 49	45 %									
GROWTH TRAITS			MATERNAL TRAITS				CARCASS TRAITS						
CED	BW	WW	YW	MILK	ME	HPG	CEM	STAY	MARB	YG	CW	REA	FAT
11	0.4	50	82	27	2	10	5	17	0.55	0.15	8	-0.06	0.05
58 %	78 %	73 %	65 %	30 %	59 %	54 %	83 %	47 %	10 %	78 %	80 %	51 %	97 %



Due approx. April 1st to 5L Defender 5382-881D,
Reg # 3577298

Lot
28

LASO LOVITT W185Y

BD 12/29/10	LASO W185Y	#1447508	100% AR /CAT. A	Performance/Stats									
BUF CRK HOBO 2595			%IMF	4.04	LBS	Ratio							
BASIN HOBO 79E 492175			RATIO	115	Act. BW	79	106						
DOUBLE FORK 079Z			REA	13.03	Adj. WW	656	109						
5L TRADITION 203-6145			RATIO	120	Adj. YW	880	105						
LASO LOVITT T71W 1321336			MPPA	101.68	ADG	1.4	93						
LASO LOVITT BB49XT					WDA	2.21	105						
CE SCORE	HB 219	4 %	GM 49	40 %									
GROWTH TRAITS			MATERNAL TRAITS				CARCASS TRAITS						
CED	BW	WW	YW	MILK	ME	HPG	CEM	STAY	MARB	YG	CW	REA	FAT
14	-1.8	55	83	28	-2	8	6	22	0.49	0.03	2	0.15	0.04
24 %	33 %	54 %	63 %	25 %	24 %	87 %	56 %	3 %	17 %	13 %	94 %	11 %	92 %



Due approx. February 1st to PIE Payweight 6348,
Reg # 3592128

Diamonds in the Rough Bull and Female Sale



Due approx. April 1st to 5L Blockade 214-75D,
Reg # 3565061

Lot
29

LASO BONANZA Z123C

BD	1/11/15	LASO Z123C	#3481133	100% AR /CAT. A	Performance/Stats								
		C-BAR ANTICIPATION 101W		%IMF	5.55		LBS	Ratio					
		C-BAR ELDORADO 114Z	1551454	RATIO	95	Act. BW	83	116					
		C-BAR STONY W914		REA	9.13	Adj. WW	578	89					
		5L REFEREE 77-350W		RATIO	89	Adj. YW							
		LASO BONANZA BE 188Z	1548507	MPPA	97.69	ADG	0						
		LASO MISS BONANZA DR138R				WDA	0						
CE SCORE		HB 165	72 %	GM 53	1 %								
GROWTH TRAITS				MATERNAL TRAITS				CARCASS TRAITS					
CED	BW	WW	YW	MILK	ME	HPG	CEM	STAY	MARB	YG	CW	REA	FAT
11	0.5	59	105	24	5	13	5	13	0.62	0.2	30	-0.14	0.03
60 %	80 %	34 %	10 %	53 %	78 %	15 %	78 %	90 %	5 %	95 %	5 %	72 %	66 %



Due approx. March 15th to PIE Payweight 6348,
Reg # 3592128

Lot
30

LASO LUANN B35D

BD	1/20/16	LASO B35D	#3549892	100% AR /CAT. A	Performance/Stats								
		BECKTON JULIAN GG B571		%IMF	4.42		LBS	Ratio					
		HXC JUSTICE 4017B	1719138	RATIO	85	Act. BW	67	95					
		HXC JAYLO LB136		REA	8.6	Adj. WW	547	96					
		5L MTN TRADER 2173-7377		RATIO	89	Adj. YW	696	86					
		LASO LUANN U113B	1697327	MPPA	97.33	ADG	0.94	62					
		LASO LUANN A13XU				WDA	1.77	87					
CE SCORE		HB 166	70 %	GM 48	65 %								
GROWTH TRAITS				MATERNAL TRAITS				CARCASS TRAITS					
CED	BW	WW	YW	MILK	ME	HPG	CEM	STAY	MARB	YG	CW	REA	FAT
13	-1.1	53	79	22	-1	12	6	15	0.43	0.07	6	-0.09	0.02
36 %	48 %	61 %	71 %	71 %	33 %	31 %	63 %	71 %	28 %	32 %	85 %	59 %	45 %



Lot
31

LASO LUANN U113B

BD	3/1/14	LASO U113B	#1697327	100% AR /CAT. A	Performance/Stats								
		5L TRADITION 203-6145		%IMF	4.3		LBS	Ratio					
		5L MTN TRADER 2173-7377	1187590	RATIO	81	Act. BW	85	105					
		5L FIREFLY 420-2173		REA	10.37	Adj. WW	565	89					
		5L SIGNATURE 5615		RATIO	98	Adj. YW	812	93					
		LASO LUANN A13XU	1241852	MPPA	96.15	ADG	1.49	100					
		LASO LUANN AR49				WDA	2.23	94					
CE SCORE		HB 155	83 %	GM 48	66 %								
GROWTH TRAITS				MATERNAL TRAITS				CARCASS TRAITS					
CED	BW	WW	YW	MILK	ME	HPG	CEM	STAY	MARB	YG	CW	REA	FAT
11	0.5	50	80	24	0	11	6	15	0.33	0.08	9	-0.03	0.03
61 %	80 %	73 %	71 %	54 %	41 %	50 %	73 %	77 %	54 %	34 %	75 %	43 %	61 %

Due approx. February 1st to Spur Franchise of Garton,
Reg # 3469042

Diamonds in the Rough Bull and Female Sale

Lot
32

LASO LANA U102A

BD 1/22/13		LASO U102A		#1628592		100% AR /CAT. 2		Performance/Stats					
RED LAZY MC STOUT 30S				%IMF	4.16			LBS	Ratio				
RED LAZY MC COWBOY CUT 26U 1329010				RATIO	90	Act. BW	98	119					
RED LAZY MC STAR 185M				REA	8.14	Adj. WW	689	113					
SCHULTZ DANNY BOY 3				RATIO	82	Adj. YW	891	106					
LASO LANI ER189U		1241722		MPPA	102.91	ADG	1.21	88					
LASO GYPSY AR43						WDA	2.35	104					
CE SCORE	HB 188	36 %	GM 48	54 %									
GROWTH TRAITS				MATERNAL TRAITS				CARCASS TRAITS					
CED	BW	WW	YW	MILK	ME	HPG	CEM	STAY	MARB	YG	CW	REA	FAT
10	2.5	68	106	22	-10	12	7	18	0.36	0.17	21	-0.14	0.03
77 %	97 %	7 %	10 %	70 %	3 %	37 %	52 %	37 %	45 %	89 %	23 %	72 %	71 %



Due approx. February 15th to 5L Defender 5382-881D,
Reg # 3577298 - Dam of Lot 33

Lot
33

LASO LANA A181F

BD 3/24/18		LASO A181F		#3932113		100% AR /CAT. 2		Performance/Stats					
BECKTON JULIAN GG B571				%IMF				LBS	Ratio				
HXC JUSTICE 4017B		1719138		RATIO		Act. BW	84	110					
HXC JAYLO LB136				REA		Adj. WW	709	118					
RED LAZY MC COWBOY CUT 26U				RATIO		Adj. YW							
LASO LANA U102A		1628592		MPPA	108	ADG	0						
LASO LANI ER189U						WDA	0						
CE SCORE	HB 188	30 %	GM 51	11 %									
GROWTH TRAITS				MATERNAL TRAITS				CARCASS TRAITS					
CED	BW	WW	YW	MILK	ME	HPG	CEM	STAY	MARB	YG	CW	REA	FAT
10	2.2	75	115	20	-6	12	5	17	0.49	0.12	17	-0.06	0.03
82 %	97 %	2 %	5 %	88 %	10 %	28 %	86 %	41 %	27 %	64 %	48 %	62 %	60 %



Open heifer calf - Daughter of Lot 32

Lot
34

LASO LANA T68D

BD 1/29/16		LASO T68D		#3549814		100% AR /CAT. A		Performance/Stats					
GMRA TRILOGY 0226				%IMF	6.07			LBS	Ratio				
GMRA DEUCES 2222		1525274		RATIO	116	Act. BW	70	90					
GMRA PRIDSTOM 069				REA	11.46	Adj. WW	584	99					
5L SIGNATURE 5615				RATIO	110	Adj. YW	849	101					
LASO LANA ER189T		1173023		MPPA	95.79	ADG	1.6	105					
LASO GYPSY AR43						WDA	2.3	100					
CE SCORE	HB 179	50 %	GM 50	17 %									
GROWTH TRAITS				MATERNAL TRAITS				CARCASS TRAITS					
CED	BW	WW	YW	MILK	ME	HPG	CEM	STAY	MARB	YG	CW	REA	FAT
14	-4.2	54	87	29	2	9	7	16	0.66	0.11	20	0.23	0.05
22 %	5 %	60 %	51 %	15 %	53 %	75 %	50 %	59 %	4 %	55 %	26 %	5 %	98 %



Due approx. March 1st to PIE Payweight 6348,
Reg # 3592128 - OS Carrier

Diamonds in the Rough Bull and Female Sale



Due approx. April 1st to PIE Payweight 6348,
Reg # 3592128

Lot
35

LASO LINDA B17D

BD 12/28/15 LASO B17D #3549877		100% AR/CAT. A		Performance/Stats									
5L ADVOCATE 817-14W		%IMF	6.19		LBS	Ratio							
5L DEFENDER 560-30Z	1549933	RATIO	106	Act. BW	70	98							
5L BLACK ADINA 525-560		REA	10.37	Adj. WW	585	98							
C-BAR ELDORADO 114Z		RATIO	100	Adj. YW	882	100							
LASO LINDA W197B	1697387	MPPA	98.67	ADG	1.86	105							
LASO LINDA T64W		CE SCORE	HB 141 93 %	GM 53 1 %	WDA	2.19	93						
GROWTH TRAITS			MATERNAL TRAITS				CARCASS TRAITS						
CED	BW	WW	YW	MILK	ME	HPG	CEM	STAY	MARB	YG	CW	REA	FAT
15	-2.9	59	99	25	-2	7	6	11	0.71	0	11	0.09	0.01
14 %	16 %	34 %	22 %	48 %	25 %	95 %	65 %	97 %	2 %	5 %	68 %	19 %	11 %



Due approx. January 15th to 5L Blockade 75D,
Reg # 3565061

Lot
36

LASO LINDA BE 182W

BD 2/20/09 LASO BE182W #1321389		100% AR/CAT. A		Performance/Stats									
O C C LEGEND 616L		%IMF	4.08		LBS	Ratio							
5L RITO MTN 431-8405	1127628	RATIO	107	Act. BW	81	99							
GLACIER OSCE 233		REA	8.92	Adj. WW	680	105							
C-T CHEROKEE SPIRIT 325		RATIO	97	Adj. YW	867	105							
LASO LINDA ER198R	1048917	MPPA	102	ADG	1.17	103							
MABES LINDA		CE SCORE	HB 156 82 %	GM 48 64 %	WDA	2.37	103						
GROWTH TRAITS			MATERNAL TRAITS				CARCASS TRAITS						
CED	BW	WW	YW	MILK	ME	HPG	CEM	STAY	MARB	YG	CW	REA	FAT
12	0.3	60	90	18	1	8	4	16	0.38	0.11	17	-0.08	0.02
43 %	77 %	28 %	43 %	91 %	43 %	90 %	93 %	70 %	40 %	54 %	40 %	56 %	36 %



Due approx. February 15th to PIE Payweight 6348,
Category 1B - Reg # 3592128

Lot
37

LASO OSO U141C

BD 2/9/15 LASO U141C #3481034		96.8% AR/CAT. B		Performance/Stats									
BUF CRK THE RIGHT KIND U199		%IMF	5.72		LBS	Ratio							
LOOSLI RIGHT KIND 112	1432590	RATIO	98	Act. BW	95	127							
MISS LL NEW 408		REA	10.27	Adj. WW	697	108							
BROWN-LSF CELEBRATION		RATIO	101	Adj. YW									
LASO OSO S10U	1241757	MPPA	99.2	ADG	0								
LASO OSO FINE BB62S		CE SCORE	HB 178 52 %	GM 51 10 %	WDA	0							
GROWTH TRAITS			MATERNAL TRAITS				CARCASS TRAITS						
CED	BW	WW	YW	MILK	ME	HPG	CEM	STAY	MARB	YG	CW	REA	FAT
9	2.8	66	100	15	-3	10	4	17	0.5	0.14	16	-0.13	0.03
90 %	98 %	11 %	19 %	98 %	19 %	56 %	89 %	53 %	16 %	78 %	44 %	70 %	69 %

Diamonds in the Rough Bull and Female Sale

Lot
38

LASO ELEANOR Z130B

BD 12/25/13 LASO Z130B #1697375		100% AR /CAT. A		Performance/Stats									
5L SIGNATURE 5615		%IMF	4.76		LBS	Ratio							
5L ADVOCATE 817-14W 1330290		RATIO	80	Act. BW	68	94							
5L MARTA 345-817		REA	7.55	Adj. WW	579	96							
5L MTN TRADER 2173-7377		RATIO	73	Adj. YW	794	95							
LASO ELEANOR S2Z 1548466		MPPA	106.55	ADG	1.35	91							
LASO ELEANOR BA45R				WDA	1.97	91							
CE SCORE	HB 149 88 %	GM 48 64 %											
GROWTH TRAITS			MATERNAL TRAITS				CARCASS TRAITS						
CED	BW	WW	YW	MILK	ME	HPG	CEM	STAY	MARB	YG	CW	REA	FAT
12	-1.7	47	74	28	0	8	5	15	0.65	0.21	12	-0.33	0.04
42 %	35 %	85 %	81 %	21 %	38 %	91 %	87 %	77 %	4 %	96 %	64 %	97 %	81 %

Due approx. January 15th to PIE Payweight 6348,
Reg # 3592128



Lot
39

LASO STAR W164C

BD 1/8/15 LASO W164C #3481053		100% AR /CAT. A		Performance/Stats									
RED SVR KNIGHT 236T		%IMF	5.44		LBS	Ratio							
RED SSS SOLDIER 365W 1673310		RATIO	87	Act. BW	89								
RED SSS BELLE 342S		REA	8.57	Adj. WW	687								
LAZY MC WORLDWIDE 5K		RATIO	83	Adj. YW									
RED LAZY MC STAR 185M 1892555		MPPA	100	ADG	0								
RED LAZY MC STAR 100J				WDA	0								
CE SCORE	HB 211 8 %	GM 47 79 %											
GROWTH TRAITS			MATERNAL TRAITS				CARCASS TRAITS						
CED	BW	WW	YW	MILK	ME	HPG	CEM	STAY	MARB	YG	CW	REA	FAT
11	0.7	60	89	24	-12	13	6	21	0.3	0.16	21	-0.16	0.02
70 %	83 %	32 %	45 %	53 %	1 %	17 %	61 %	7 %	64 %	83 %	24 %	77 %	45 %



Due approx. April 1st to 5L Blockade 75D,
Reg # 3565061

Lot
40

LASO STARSTRUCK A190C

BD 12/26/14 LASO A190C #3481038		100% AR /CAT. A		Performance/Stats									
C-BAR ANTICIPATION 101W		%IMF	6.81		LBS	Ratio							
C-BAR ELDORADO 114Z 1551454		RATIO	116	Act. BW	68	101							
C-BAR STONY W914		REA	9.73	Adj. WW	655	106							
LOOSLI RIGHT KIND 112		RATIO	99	Adj. YW									
LASO STARSTRUCK S27A 1628579		MPPA	103.43	ADG	0								
LASO STARSTRUCK BB82S				WDA	0								
CE SCORE	HB 167 69 %	GM 53 1 %											
GROWTH TRAITS			MATERNAL TRAITS				CARCASS TRAITS						
CED	BW	WW	YW	MILK	ME	HPG	CEM	STAY	MARB	YG	CW	REA	FAT
13	-1	64	103	25	3	13	7	13	0.73	0.12	20	-0.07	0.02
29 %	50 %	16 %	14 %	46 %	65 %	21 %	38 %	92 %	2 %	62 %	29 %	54 %	39 %



Due approx. February 15th to 5L Defender 5382-881D,
Reg # 3577298

Diamonds in the Rough Bull and Female Sale



Due approx. February 15th to Spur Franchise of Garton, Reg # 3469042 - DDC

Lot
41

JACOBSON LAKOTA 4146

BD 2/18/14		GJRA 4146		#1732134		100% AR /CAT. 2		Performance/Stats					
		BUF CRK THE RIGHT KIND U199		%IMF	5.45			LBS	Ratio				
5L ADVANTAGE 3267-221Y		1450210		RATIO	0	Act. BW							
5L ADINA 195-3267				REA	10.95	Adj. WW		557					
BON VIEW NEW DESIGN 1407				RATIO	0	Adj. YW		841					
5L LAKOTA 41C-813		921140		MPPA	97.31	ADG		1.72					
BASIN LAKOTA C999						WDA		2.19					
CE SCORE		HB 155	83 %	GM 50	19 %								
GROWTH TRAITS				MATERNAL TRAITS				CARCASS TRAITS					
CED	BW	WW	YW	MILK	ME	HPG	CEM	STAY	MARB	YG	CW	REA	FAT
12	-1.3	59	86	22	-3	8	8	13	0.54	0.05	10	0.03	0.02
48 %	44 %	33 %	54 %	73 %	20 %	84 %	18 %	90 %	11 %	21 %	72 %	29 %	51 %



Due approx. February 15th to Spur Franchise of Garton, Reg # 3469042 - Dam of Lot 43

Lot
42

JACOBSON COLLEAN 4149

BD 2/19/14		GJRA 4149		#1717157		100% AR /CAT. A		Performance/Stats					
		BUF CRK THE RIGHT KIND U199		%IMF	4.71			LBS	Ratio				
5L ADVANTAGE 3267-221Y		1450210		RATIO	88	Act. BW							
5L ADINA 195-3267				REA	11.57	Adj. WW		532					
GLACIER LOGAN 210				RATIO	102	Adj. YW		776					
HRR COLLEAN 429		958998		MPPA	102.94	ADG		1.47					
HOLDEN COLLEAN 6024						WDA		2.01					
CE SCORE		HB 162	76 %	GM 50	18 %								
GROWTH TRAITS				MATERNAL TRAITS				CARCASS TRAITS					
CED	BW	WW	YW	MILK	ME	HPG	CEM	STAY	MARB	YG	CW	REA	FAT
12	-2	55	81	25	-2	7	8	14	0.54	0.02	7	-0.01	0.01
48 %	30 %	55 %	67 %	50 %	27 %	94 %	19 %	82 %	11 %	10 %	82 %	38 %	14 %



Lot
43

LASO COLLEAN B55F

BD 3/4/18		LASO B55F		#3932185		100% AR /CAT. 2		Performance/Stats					
		SPUR FRANCHISE 7070		%IMF				LBS	Ratio				
SPUR FRANCHISE OF GARTON		3469042		RATIO		Act. BW		72	97				
H & H IRENE LASS 0135				REA		Adj. WW		607	101				
5L ADVANTAGE 3267-221Y				RATIO		Adj. YW							
JACOBSON COLLEAN 4149		1717157		MPPA	103.33	ADG		0					
HRR COLLEAN 429						WDA		0					
CE SCORE		HB 163	74 %	GM 53	2 %								
GROWTH TRAITS				MATERNAL TRAITS				CARCASS TRAITS					
CED	BW	WW	YW	MILK	ME	HPG	CEM	STAY	MARB	YG	CW	REA	FAT
13	-2.4	59	93	24	-3	10	9	13	0.78	-0.04	28	0.52	0.02
35 %	28 %	44 %	45 %	57 %	27 %	61 %	15 %	89 %	2 %	6 %	12 %	1 %	30 %

Daughter of Lot 42 - Open heifer calf

Diamonds in the Rough Bull and Female Sale

Lot
44

LASO AMORA D151F

BD 12/24/17 LASO D151F #3932279		85.9% AR/CAT. 3		Performance/Stats									
KOUFALS B&B IDENTITY		%IMF			LBS	Ratio							
MUSGRAVE AVIATOR 3320483		RATIO		Act. BW	68	98							
MCATL FOREVER LADY 1429-138		REA		Adj. WW	560	101							
LOOSLI RIGHT KIND 112		RATIO		Adj. YW									
LASO AMORA Z121D-2 3549842		RATIO		ADG	0								
LASO AMORA T44Z		MPPA	100.4	WDA	0								
CE SCORE	HB 197 15 %	GM 51 20 %											
GROWTH TRAITS			MATERNAL TRAITS				CARCASS TRAITS						
CED	BW	WW	YW	MILK	ME	HPG	CEM	STAY	MARB	YG	CW	REA	FAT
15	-2.2	61	96	24	-3	10	11	17	0.51	0	22	0.45	0.03
10 %	15 %	25 %	21 %	27 %	67 %	19 %	1 %	28 %	5 %	73 %	21 %	16 %	99 %

Hybrid open heifer calf

Lot
45

LASO VIOLET BA14B

BD 2/13/14 LASO BA14B #1697326		87.4% AR /CAT. B		Performance/Stats									
BUF CRK THE RIGHT KIND U199		%IMF	4.96		LBS	Ratio							
LOOSLI RIGHT KIND 112 1432590		RATIO	87	Act. BW	77	96							
MISS LL NEW 408		REA	10.97	Adj. WW	610	96							
DUNN GOOD HEAVENS!		RATIO	102	Adj. YW	819	93							
LASO ULTRA VIOLET A13 775607		RATIO	100.87	ADG	1.27	86							
LASO VIOLET A13		MPPA	100.87	WDA	2.24	94							
CE SCORE	HB 153 85 %	GM 47 85 %											
GROWTH TRAITS			MATERNAL TRAITS				CARCASS TRAITS						
CED	BW	WW	YW	MILK	ME	HPG	CEM	STAY	MARB	YG	CW	REA	FAT
12	0	51	70	23	-3	8	6	15	0.24	-0.03	4	0.01	0
54 %	71 %	71 %	87 %	66 %	19 %	87 %	63 %	75 %	82 %	3 %	90 %	34 %	2 %

Category 1B - Due approx. January 15th to Spur Franchise of Garton, Reg # 3469042

Lot
46

LASO MATTIE W171C

BD 2/6/15 LASO W171C #3481130		100% AR/CAT. A		Performance/Stats									
5L NIGHT WATCH 203-04T		%IMF	6.22		LBS	Ratio							
5L NIGHTWATCH 6120-454Z 1549719		RATIO	106	Act. BW	71	95							
5L SUNBURST 2705-6120		REA	10.81	Adj. WW	649	100							
5L SIGNATURE 5615		RATIO	106	Adj. YW									
LASO MATTIE D 136W 1321400		RATIO	106	ADG	0								
FISCHERS MATTIE 195		MPPA	105.76	WDA	0								
CE SCORE	HB 179 50 %	GM 49 29 %											
GROWTH TRAITS			MATERNAL TRAITS				CARCASS TRAITS						
CED	BW	WW	YW	MILK	ME	HPG	CEM	STAY	MARB	YG	CW	REA	FAT
14	-2.8	49	83	31	1	11	8	16	0.49	0.06	15	0.11	0.03
18 %	18 %	78 %	63 %	9 %	45 %	48 %	18 %	65 %	17 %	24 %	49 %	16 %	63 %



Due approx. February 15th to PIE Payweight 6348, Reg # 3592128

Lot
47

LASO MARJIE Y65C

BD 1/31/15 LASO Y65C #3481119		100% AR/CAT. A		Performance/Stats									
5L BONFIRE 1715-126X		%IMF	7.4		LBS	Ratio							
5L ADJUSTER 1027-624Z 1549237		RATIO	127	Act. BW	63	87							
5L HAZEL 1365-1027		REA	10.4	Adj. WW	648	100							
RED BAR-E-L WALKER 43W		RATIO	102	Adj. YW									
LASO MARJIE T62Y 1447476		RATIO	102	ADG	0								
LASO MARJIE BE183T		MPPA	101.6	WDA	0								
CE SCORE	HB 185 39 %	GM 48 56 %											
GROWTH TRAITS			MATERNAL TRAITS				CARCASS TRAITS						
CED	BW	WW	YW	MILK	ME	HPG	CEM	STAY	MARB	YG	CW	REA	FAT
14	-2.2	54	88	26	-2	10	7	18	0.57	0.14	21	-0.04	0.03
20 %	26 %	56 %	50 %	37 %	26 %	69 %	36 %	41 %	8 %	74 %	24 %	46 %	69 %



Due approx. February 15th to PIE Payweight 6348, Reg # 3592128

Diamonds in the Rough Bull and Female Sale



Lot
48

LASO TAMY B58D

BD 1/24/16 LASO B58D #3549913		100% AR /CAT. A		Performance/Stats									
BUF CRK THE RIGHT KIND U199		%IMF	5.87		LBS	Ratio							
5L INDEPENDENCE 560-298Y 1450309		RATIO	113	Act. BW	74	103							
5L BLACK ADINA 525-560		REA	11.57	Adj. WW	616	108							
5L MTN SIGN 435-10Z		RATIO	120	Adj. YW	889	110							
JACOBSON TAMY 4206 1699228		MPPA	103.2	ADG	1.71	114							
LAZYJ MISS AMELIA 108-9031				WDA	2.26	111							
CE SCORE	HB 150 87 %	GM 52 3 %											
GROWTH TRAITS				MATERNAL TRAITS				CARCASS TRAITS					
CED	BW	WW	YW	MILK	ME	HPG	CEM	STAY	MARB	YG	CW	REA	FAT
15	-2.7	61	100	31	-4	8	6	12	0.75	0.08	13	-0.01	0.02
13 %	19 %	26 %	19 %	9 %	13 %	90 %	63 %	95 %	2 %	37 %	56 %	38 %	51 %

Due approx. February 15th to PIE Payweight 6348,
Reg # 3592128



Due approx. April 1st to 5L Blockade 75D,
Reg # 3565061

Lot
49

LASO GRETTA B60D

BD 2/19/16 LASO B60D #3549914		100% AR /CAT. A		Performance/Stats									
BROWN 3K STAKEHOLDER X7870		%IMF	5.11		LBS	Ratio							
KOESTER UNMISTAKEABULL 330 1670273		RATIO	98	Act. BW	76	105							
KOESTER MS YIELD 116		REA	8.95	Adj. WW	517	91							
5L TRADESMAN 1715-6237		RATIO	93	Adj. YW	819	101							
JACOBSON GRETTA 4090 1699245		MPPA	98.86	ADG	1.88	125							
JACOBSON GRETTA 2029				WDA	2.09	102							
CE SCORE	HB 187 36 %	GM 50 24 %											
GROWTH TRAITS				MATERNAL TRAITS				CARCASS TRAITS					
CED	BW	WW	YW	MILK	ME	HPG	CEM	STAY	MARB	YG	CW	REA	FAT
13	-0.6	56	96	20	3	11	7	17	0.45	0.17	25	-0.19	0.02
40 %	59 %	49 %	28 %	86 %	62 %	39 %	36 %	47 %	24 %	87 %	12 %	83 %	30 %



Due approx. March 15th to Spur Franchise of Garton,
Reg # 3469042

Lot
50

JACOBSON RED BIRD 4193

BD 3/10/14 GJRA 4193 #1699203		100% AR /CAT. A		Performance/Stats									
5L ADVOCATE 817-14W		%IMF	4.8		LBS	Ratio							
5L MTN SIGN 435-10Z 1549522		RATIO	105	Act. BW	78	103							
5L LAKOTA 1583-435		REA	9.12	Adj. WW	556	96							
5L NORSEMAN KING 2291		RATIO	92	Adj. YW	845	99							
DAHLKE NORSE REDBIRD 184 1434250		MPPA	100.77	ADG	1.78	104							
DAHLKE RED BIRD 122U				WDA	2.19	100							
CE SCORE	HB 198 20 %	GM 51 11 %											
GROWTH TRAITS				MATERNAL TRAITS				CARCASS TRAITS					
CED	BW	WW	YW	MILK	ME	HPG	CEM	STAY	MARB	YG	CW	REA	FAT
11	-0.4	60	96	23	-1	11	6	19	0.61	0.16	21	-0.18	0.02
58 %	63 %	31 %	27 %	61 %	32 %	40 %	56 %	29 %	6 %	83 %	22 %	81 %	36 %

Diamonds in the Rough Bull and Female Sale

Lot
50X

LASO FIREFLY B33E

BD 2/1/17	LASO B33E	#3804396	100% AR /CAT. A	Performance/Stats										
C-BAR EVOLUTION 107Y				%IMF	4.72		LBS	Ratio						
C-BAR-RJ GENESIS A31 1628423				RATIO	97	Act. BW	86							
C-BAR ABIGRACE W91				REA	7.49	Adj. WW	596							
RED LAZY MC LOOKOUT 153X				RATIO	98	Adj. YW	735							
RED LAZY MC MISS FIREFLY 36Z 1534652				MPPA	100	ADG	0.87							
RED LAZY MC MISS FIREFLY 31S						WDA	2.08							
CE SCORE	HB 151	86 %	GM 50	30 %										
GROWTH TRAITS				MATERNAL TRAITS				CARCASS TRAITS						
CED	BW	WW	YW	MILK	ME	HPG	CEM	STAY	MARB	YG	CW	REA	FAT	
8	0.6	69	112	21	-6	11	3	14	0.36	0.04	25	0.05	0	
95 %	87 %	8 %	7 %	84 %	8 %	48 %	97 %	80 %	57 %	15 %	18 %	34 %	5 %	



DONOR PROSPECT ALERT!

A stunning, feminine, well built bred heifer out of C-Bar-RJ Genesis A31 and many time champion Lazy MC Firefly 36Z. We have retained numerous full sisters and love them. She missed her connection to the Reno Bet on Red Sale, so she instead sells in Othello on the 19th, but without a halter! AI'd 3/23/18 to LASO Sure Shot C74E (Reg. #3785783) and cleaned up to C-Bar One Of A Kind129E (Reg. #3843915)

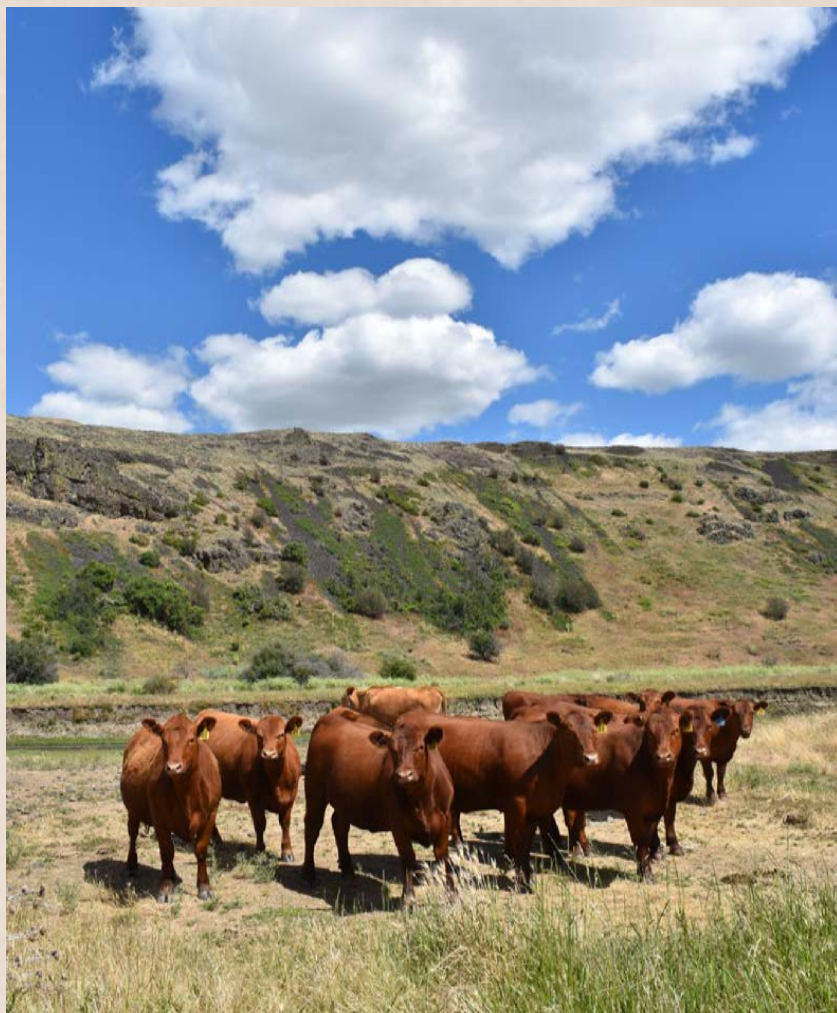
RED RIGHT. NOW.

An independent university study compared six years of Superior Livestock Auction data, revealing Red Angus-sired heifers commanded from \$5 to \$9/cwt. more than females of all other breed types.

The Red Angus female is the rancher favorite for replacements that deliver real profitability.

Ranch Tested. Rancher Trusted.
Red Angus

Learn more about the value of Red Angus-sired replacement females at redangus.org



WOOD V BAR X RANCH



Bred heifers Straight From the Heart of our purebred herd. The sires used for AI are breed leading high performance calving ease sires from some of the top programs in the country. Careful scrutinizing selections have been done to identify only the most fertile females were selected for replacements. They were preg checked October 1st, and given a booster of Preg Guard 10fp, ultrabac 8, multi-mineral and dectomax pour on. Estimated calving dates have been projected as closely as possible.

VF INCREDABULL E756-A126

BD 2/6/17	VFRA E756	# 3788283	100% AR /CAT. A	Performance/Stats										
S A V FINAL ANSWER 0035				%IMF	LBS	Ratio								
BROWN INCREDABULL Z7277 1550654							RATIO	Act. BW	74	99				
BROWN MS MISSION STMT X7559							REA	Adj. WW	804	109				
REDHILL B571 JULIAN 1W							RATIO	Adj. YW	1293	105				
VF A126-146 1720539							MPPA	ADG	3.05	99				
MCPHEE DARLING 4830					WDA	3.5	106							
CE SCORE	HB 210	6 %	GM 52 4 %											
GROWTH TRAITS			MATERNAL TRAITS				CARCASS TRAITS							
CED	BW	WW	YW	MILK	ME	HPG	CEM	STAY	MARB	YG	CW	REA	FAT	
12	-1.6	70	107	21	-1	14	4	19	0.7	0.08	44	0.45	0.03	
59 %	44 %	7 %	13 %	83 %	40 %	7 %	92 %	14 %	4 %	32 %	1 %	1 %	65 %	

WOOD INDY 6010

BD 2/16/16	WVX 6010	# 3546697	100% AR /CAT. A	Performance/Stats											
5L INDEPENDENCE 560-298Y				%IMF	LBS	Ratio									
JACOBSON INDY 4142 1699262							RATIO	5.42	Act. BW	76	104				
JACOBSON LUBBOCK 2101							REA	10.26	Adj. WW	611	103				
KOESTER CHIVAS 005							RATIO	100	Adj. YW	1002	103				
WOOD MARIGOLD 4205 1675113							MPPA	101.2	ADG	2.43	102				
WOOD MARIGOLD 2120					WDA	2.51	100								
CE SCORE	HB 185	36 %	GM 52 9 %												
GROWTH TRAITS			MATERNAL TRAITS				CARCASS TRAITS								
CED	BW	WW	YW	MILK	ME	HPG	CEM	STAY	MARB	YG	CW	REA	FAT		
15	-1.2	58	92	24	-2	15	8	15	0.9	0.21	22	-0.1	0.05		
21 %	53 %	51 %	49 %	54 %	36 %	5 %	20 %	75 %	1 %	96 %	27 %	73 %	94 %		

LCC ABOVE & BEYOND 1300J

BD 1/18/99	JHL 1300J	# 662722	100% AR /CAT. A	Performance/Stats											
LEACHMAN HEAVENLY 8141				%IMF	LBS	Ratio									
LCHMAN.ABOVEHEAVEN1018F 532739							RATIO	4.29	Act. BW	58	77				
LCHMN PRIDE D1122							REA	12.54	Adj. WW	625	97				
LMAN ROBIN HOOD 1174B							RATIO	100	Adj. YW	1130	99				
HXC 701G 559783							MPPA	106.51	ADG	3.15	102				
HXC 555E					WDA	2.93	97								
CE SCORE	HB 160	78 %	GM 49 67 %												
GROWTH TRAITS			MATERNAL TRAITS				CARCASS TRAITS								
CED	BW	WW	YW	MILK	ME	HPG	CEM	STAY	MARB	YG	CW	REA	FAT		
18	-7.6	45	81	34	2	10	12	12	0.45	0.3	3	-0.44	0.07		
9 %	1 %	91 %	81 %	2 %	67 %	67 %	2 %	91 %	43 %	98 %	89 %	98 %	98 %		

SUNR 935B

BD 1/20/14	SUNR 935B	# 1680962	100% AR /CAT. A	Performance/Stats											
DKK ULTIMATE 9032				%IMF	LBS	Ratio									
SUNR ULTIMATE RIBEYE 672Z 1511181							RATIO	3.49	Act. BW	92	110				
SUNR LARSON 672							REA	14.55	Adj. WW	756	1138				
HXC BRUTE FORCE 6600S							RATIO	109	Adj. YW	1138	108				
SUNR ANDREA 935 1295721							MPPA	99.03	ADG	2.38	104				
SUNR ANDREA 457					WDA	3.07	107								
CE SCORE	HB 139	93 %	GM 50 35 %												
GROWTH TRAITS			MATERNAL TRAITS				CARCASS TRAITS								
CED	BW	WW	YW	MILK	ME	HPG	CEM	STAY	MARB	YG	CW	REA	FAT		
12	0.6	68	107	25	-2	11	5	11	0.31	0.04	10	0.27	0.05		
61 %	82 %	23 %	25 %	43 %	39 %	57 %	80 %	94 %	71 %	19 %	76 %	14 %	85 %		

Wood V bar X Reference/Service Sires



FRITZ VENGEANCE 661B

BD	2/23/14	FJE	661B	#1697993	100% AR /CAT. A	Performance/Stats							
FRITZ JUSTICE 8013					%IMF	3.05		LBS	Ratio				
GMRA VENGEANCE 1254 1428983					RATIO	98	Act. BW	82	93				
GMRA NEXA 901					REA	13.02	Adj. WW	718	1326				
UBAR HIGH CAPACITY 6088					RATIO	97	Adj. YW	1326	108				
FRITZ DUCHES 8001 1255255					RATIO	97	ADG	3.8	115				
FRITZ DUCHESS 3009					MPPA	99.13	WDA	3.62	109				
CE SCORE		HB	181	41 %	GM	49	47 %						
GROWTH TRAITS				MATERNAL TRAITS				CARCASS TRAITS					
CED	BW	WW	YW	MILK	ME	HPG	CEM	STAY	MARB	YG	CW	REA	FAT
14	-1.5	62	105	22	1	6	8	17	0.25	0.09	31	0.14	0.02
28 %	41 %	27 %	16 %	70 %	58 %	95 %	33 %	35 %	80 %	46 %	7 %	18 %	36 %



WOOD SCOTCHMAN 5060

BD	3/31/15	WVX	5060	#3478342	100% AR /CAT. A	Performance/Stats							
BROWN ALLIANCE X7795					%IMF	2.91		LBS	Ratio				
DUNN INFUSION A526 1609992					RATIO	91	Act. BW	88	107				
DUNN MATTIE 1034					REA	14.02	Adj. WW	697	1128				
SUNR GENTLE GIANT 316W					RATIO	114	Adj. YW	1128	103				
WOOD CASSIDY 2111 1542017					RATIO	114	ADG	2.68	99				
WOOD CASSIDY 8160					MPPA	100.82	WDA	3.03	103				
CE SCORE		HB	173	56 %	GM	51	11 %						
GROWTH TRAITS				MATERNAL TRAITS				CARCASS TRAITS					
CED	BW	WW	YW	MILK	ME	HPG	CEM	STAY	MARB	YG	CW	REA	FAT
8	0.8	70	109	16	-1	11	3	17	0.47	0	1	0.01	0.01
92 %	87 %	7 %	10 %	97 %	44 %	52 %	98 %	45 %	24 %	8 %	94 %	40 %	23 %



WOOD MTN. SIDE 5033

BD	2/26/15	WVX	5033	#3478219	100% AR /CAT. A	Performance/Stats							
5L ADVOCATE 817-14W					%IMF	3.64		LBS	Ratio				
5L MTN SIGN 435-10Z 1549522					RATIO	125	Act. BW	90	104				
5L LAKOTA 1583-435					REA	11.59	Adj. WW	651	1106				
GMRA LARAMIE 5110					RATIO	100	Adj. YW	1106	108				
GMRA LENA 927 1322974					RATIO	100	ADG	2.84	109				
GMRA LENA 952					MPPA	99.2	WDA	3.05	108				
CE SCORE		HB	199	29 %	GM	52	15 %						
GROWTH TRAITS				MATERNAL TRAITS				CARCASS TRAITS					
CED	BW	WW	YW	MILK	ME	HPG	CEM	STAY	MARB	YG	CW	REA	FAT
12	-1.4	60	102	32	4	9	6	19	0.54	0.14	30	0.04	0.03
61 %	52 %	52 %	36 %	5 %	82 %	71 %	71 %	22 %	27 %	65 %	18 %	43 %	48 %



WOOD ICICLE 5071

BD	3/17/15	WVX	5071	#3478391	100% AR /CAT. A	Performance/Stats							
GLACIER CHATEAU 744					%IMF	3.58		LBS	Ratio				
WOOD ICE CAP 2010 1542130					RATIO	100	Act. BW	82	96				
FRITZ ESTER 2028					REA	12.2	Adj. WW	677	1113				
WOOD OPTIMA 604					RATIO	99	Adj. YW	1113	100				
WOOD RAZZLE 0106 1360997					RATIO	99	ADG	2.72	90				
LOOSLI GOLD 595					MPPA	108	WDA	3.08	100				
CE SCORE		HB	163	71 %	GM	47	76 %						
GROWTH TRAITS				MATERNAL TRAITS				CARCASS TRAITS					
CED	BW	WW	YW	MILK	ME	HPG	CEM	STAY	MARB	YG	CW	REA	FAT
12	-1.1	55	88	22	8	9	9	16	0.38	0.14	26	0.04	0.03
58 %	50 %	58 %	57 %	69 %	96 %	78 %	16 %	56 %	43 %	72 %	15 %	33 %	69 %



LASO DEFENDER B29E

BD	1/1/17	LASO	B29E	#3785669	100% AR /CAT. A	Performance/Stats							
5L ADVOCATE 817-14W					%IMF	7.73		LBS	Ratio				
5L DEFENDER 560-30Z 1549933					RATIO	149	Act. BW	84	110				
5L BLACK ADINA 525-560					REA	12.48	Adj. WW	736	117				
C-BAR ELDORADO 114Z					RATIO	102	Adj. YW	1149	113				
LASO DORY JIBA Z141B 1697291					RATIO	102	ADG	2.57	108				
LASO DORY JIBA X22Z					MPPA	105.33	WDA	2.99	113				
CE SCORE		HB	161	76 %	GM	53	2 %						
GROWTH TRAITS				MATERNAL TRAITS				CARCASS TRAITS					
CED	BW	WW	YW	MILK	ME	HPG	CEM	STAY	MARB	YG	CW	REA	FAT
11	-2	65	105	19	-2	10	4	14	0.95	0.04	22	0.09	0
73 %	36 %	18 %	16 %	92 %	37 %	62 %	94 %	83 %	1 %	15 %	25 %	26 %	8 %



LASO DEFENDER B35E

BD	12/26/16	LASO	B35E	#3785585	100% AR /CAT. A	Performance/Stats							
5L ADVOCATE 817-14W					%IMF	5.03		LBS	Ratio				
5L DEFENDER 560-30Z 1549933					RATIO	0	Act. BW	83					
5L BLACK ADINA 525-560					REA	12.38	Adj. WW	586					
BASIN HOBO 79E					RATIO	0	Adj. YW	988					
LASO LEANNA BC114R 1048957					RATIO	0	ADG	2.51					
LASO LEANNA BC 114					MPPA	104.91	WDA	2.7					
CE SCORE		HB	170	63 %	GM	51	17 %						
GROWTH TRAITS				MATERNAL TRAITS				CARCASS TRAITS					
CED	BW	WW	YW	MILK	ME	HPG	CEM	STAY	MARB	YG	CW	REA	FAT
17	-4.2	55	91	29	-3	4	7	15	0.71	0.1	14	-0.09	0.02
7 %	6 %	64 %	51 %	11 %	23 %	98 %	50 %	69 %	4 %	47 %	61 %	70 %	32 %

Selkirk Ridge
PHOTOGRAPHY

(208) 946-0823

selkirkridgephotography@yahoo.com


selkirkridgephotography.com

Catalog Layout & Design - Wood V bar X Photography




Progeny of Wood Xpress 4047



 WOOD XPRESS 4047													
BD 3/8/14	WVX 4047	# 1675125	100% AR /CAT. A					Performance/Stats					
5L TRAVLIN EXPRESS 1892-6295			%IMF	3.56		LBS	Ratio						
5L TRAVEL XPRESS 1110-77Z 1548800			RATIO	111	Act. BW	87	115						
5L COUNTESS 1562-1110			REA	13.51	Adj. WW	731	1176						
SUNR GENTLE GIANT 316W			RATIO	114	Adj. YW	1176	107						
WOOD LACEY 2135 1541984			MPPA	100	ADG	2.78	99						
WVX 598					WDA	3.05	108						
CE SCORE	HB 179	55 %	GM 51	26 %									
GROWTH TRAITS				MATERNAL TRAITS					CARCASS TRAITS				
CED	BW	WW	YW	MILK	ME	HPG	CEM	STAY	MARB	YG	CW	REA	FAT
14	-0.8	63	103	25	-1	13	9	15	0.71	0.1	18	0.1	0.04
34 %	63 %	39 %	33 %	46 %	45 %	34 %	26 %	74 %	9 %	45 %	53 %	32 %	73 %


• Steve Wood purchased this bull in our 2015 Sale. After the dust settled he had won the bid at \$8250. We liked the bull so well with his balanced EPD Profile that we bought a ½ interest and shared pasture rights. He continues to add muscle, shape and dimension and still has the athleticism of his Sire, 5L Travel Xpress 1110-77Z.



 WOOD REBALAS 7243													
BD 3/14/17	WVX 7243	# 3712199	100% AR /CAT. A					Performance/Stats					
5L TRAVEL XPRESS 1110-77Z			%IMF	4.2		LBS	Ratio						
WOOD XPRESS 4047 1675125			RATIO	103	Act. BW	82	105						
WOOD LACEY 2135			REA	8.27	Adj. WW	574	100						
LORENZEN JULIAN 7811			RATIO	110	Adj. YW	655	99						
WOOD REBALAS 1119 1429612			MPPA	96.92	ADG	0.45	87						
WOOD REBALAS 942					WDA	1.6	96						
CE SCORE	HB 186	33 %	GM 49	53 %									
GROWTH TRAITS				MATERNAL TRAITS					CARCASS TRAITS				
CED	BW	WW	YW	MILK	ME	HPG	CEM	STAY	MARB	YG	CW	REA	FAT
13	-0.8	56	85	24	-3	9	6	18	0.51	0.1	9	-0.01	0.04
39 %	62 %	59 %	67 %	60 %	29 %	72 %	62 %	27 %	23 %	50 %	84 %	49 %	84 %

AI'd to 5L Defender 76C on 5/18/2018. Pasture exposed to LASO Defender B35E from 5/20 - 7/24. Est. due date 2/25/19



 WOOD REBALAS 7238													
BD 3/13/17	WVX 7238	# 3712257	100% AR /CAT. A					Performance/Stats					
5L TRAVEL XPRESS 1110-77Z			%IMF	4.62		LBS	Ratio						
WOOD XPRESS 4047 1675125			RATIO	113	Act. BW	70	89						
WOOD LACEY 2135			REA	7.45	Adj. WW	582	102						
GMRA TRILOGY 0226			RATIO	99	Adj. YW	655	99						
WOOD REBALAS 2125 1542117			MPPA	102.91	ADG	0.4	78						
WOOD REBALAS 319					WDA	1.58	95						
CE SCORE	HB 201	12 %	GM 50	39 %									
GROWTH TRAITS				MATERNAL TRAITS					CARCASS TRAITS				
CED	BW	WW	YW	MILK	ME	HPG	CEM	STAY	MARB	YG	CW	REA	FAT
15	-2.9	55	88	24	-2	9	10	18	0.63	0.14	17	0.06	0.05
14 %	19 %	62 %	59 %	56 %	31 %	82 %	3 %	22 %	8 %	72 %	49 %	32 %	94 %

AI'd to LASO Defender B29E on 5/18/2018. Pasture exposed to LASO Defender B35E from 5/20 - 7/24. Est. due date 4/10/19

Lot
53

WOOD ELEANOR 7239

BD 3/13/17	WVX 7239	# 3712153	100% AR /CAT. A	Performance/Stats									
5L TRAVEL XPRESS 1110-77Z			%IMF		LBS	Ratio							
WOOD XPRESS 4047 1675125			RATIO		Act. BW	50	64						
WOOD LACEY 2135			REA		Adj. WW	377	81						
LORENZEN JULIAN 7811			RATIO		Adj. YW								
WOOD ELEANOR 0103 1361027			MPPA	91.76	ADG	0							
DKK ELEANOR 8012					WDA	0							
CE SCORE	HB 187	32 %	GM 48	68 %									
GROWTH TRAITS			MATERNAL TRAITS				CARCASS TRAITS						
CED	BW	WW	YW	MILK	ME	HPG	CEM	STAY	MARB	YG	CW	REA	FAT
18	-4.9	50	80	25	0	11	9	16	0.51	0.09	12	0.03	0.04
3 %	3 %	81 %	78 %	47 %	51 %	52 %	12 %	48 %	23 %	45 %	70 %	39 %	77 %



Pasture exposed to 6068,7088,7026, from 5/20 - 7/24. Est. due date 2/25/19

“A little bitty calf at birth is also a little bitty calf at weaning. However it is still better than a great big dead calf” - James R. Wood 1980

Lot
54

WOOD ADDIE 7242

BD 3/14/17	WVX 7242	# 3712117	100% AR /CAT. A	Performance/Stats									
5L TRAVEL XPRESS 1110-77Z			%IMF	4.71	LBS	Ratio							
WOOD XPRESS 4047 1675125			RATIO	111	Act. BW	78	99						
WOOD LACEY 2135			REA	8.17	Adj. WW	600	111						
AKO EVES ADVANCE 704			RATIO	100	Adj. YW	660	106						
AKO ADDIE 922 1302798			MPPA	102.47	ADG	0.32	70						
DUNN 0521					WDA	1.59	102						
CE SCORE	HB 176	53 %	GM 48	61 %									
GROWTH TRAITS			MATERNAL TRAITS				CARCASS TRAITS						
CED	BW	WW	YW	MILK	ME	HPG	CEM	STAY	MARB	YG	CW	REA	FAT
14	-0.8	58	92	25	1	10	9	16	0.51	0.11	15	0	0.03
33 %	62 %	49 %	50 %	42 %	59 %	66 %	15 %	55 %	23 %	54 %	60 %	46 %	71 %



AI'ed to VF Incredabull E756-A126 on 5/18/2018. Pasture exposed to Wood Indy 6010 from 5/20 - 7/24. Est. due date 3/7/19

Lot
55

WOOD ADDIE 7220

BD 3/3/17	WVX 7220	# 3712193	100% AR /CAT. A	Performance/Stats									
5L TRAVEL XPRESS 1110-77Z			%IMF	4.22	LBS	Ratio							
WOOD XPRESS 4047 1675125			RATIO	104	Act. BW	78	100						
WOOD LACEY 2135			REA	8.76	Adj. WW	583	102						
SUNR GENTLE GIANT 316W			RATIO	116	Adj. YW	710	107						
WOOD ADDIE 1109 1429570			MPPA	101.54	ADG	0.74	144						
AKO ADDIE 922					WDA	1.77	106						
CE SCORE	HB 187	31 %	GM 49	52 %									
GROWTH TRAITS			MATERNAL TRAITS				CARCASS TRAITS						
CED	BW	WW	YW	MILK	ME	HPG	CEM	STAY	MARB	YG	CW	REA	FAT
15	-1.7	55	89	26	-3	11	9	17	0.47	0.06	9	0.08	0.03
19 %	42 %	62 %	57 %	34 %	28 %	45 %	12 %	45 %	30 %	25 %	83 %	28 %	75 %



Lot 55 As a calf - AI'ed to 5L Defender 76C on 5/18/2018. Pasture exposed to LASO Defender B35E from 5/20 - 7/24. Est. due date 2/25/19

Progeny of Jacobson Indy 4142



JACOBSON INDY 4142

BD 2/17/14	GJRA 4142	#1699262	100% AR /CAT. A	Performance/Stats									
BUF CRK THE RIGHT KIND U199			%IMF	4.42		LBS	Ratio						
5L INDEPENDENCE 560-298Y 1450309			RATIO	138	Act. BW	83	105						
5L BLACK ADINA 525-560			REA	12.01	Adj. WW	718	1110						
JACOBSON SHOOTER 9055			RATIO	96	Adj. YW	1110	107						
JACOBSON LUBBOCK 2101 1550916			MPPA	99.04	ADG	2.44	97						
HW LUBBOCK 3179					WDA	2.84	103						
CE SCORE	HB 159	79 %	GM 52	16 %									
GROWTH TRAITS			MATERNAL TRAITS			CARCASS TRAITS							
CED	BW	WW	YW	MILK	ME	HPG	CEM	STAY	MARB	YG	CW	REA	FAT
14	-1.4	60	94	17	-4	12	7	12	0.92	0.11	12	-0.19	0.01
38 %	52 %	52 %	56 %	90 %	26 %	37 %	52 %	91 %	2 %	47 %	70 %	81 %	21 %

• Indy was purchased from Jacobson Red Angus, Gary and Val Jacobson in Minnesota. We selected him for calving ease and added Carcass Merit. We have used him heavily on heifers and 2 year old cows. He has the ability to put that easy going disposition into his calves, along with moderate frame and added thickness. His sons have performed excellent recording one of the highest ADG Sire Groups this spring. His yearling performance data was 718# WW Ratio 114, 1110# YW Ratio 107, IMF 4.42 Ratio 138.



AI'ed to 5L Defender 76C on 5/18/2018. Pasture exposed to LASO Defender B35E from 5/20 - 7/24. Est. due date 3/7/19



WOOD MARIGOLD 7245

BD 3/16/17	WVX 7245	# 3712343	93.8% AR/CAT. B	Performance/Stats									
5L INDEPENDENCE 560-298Y			%IMF	5.53		LBS	Ratio						
JACOBSON INDY 4142 1699262			RATIO	128	Act. BW	81	113						
JACOBSON LUBBOCK 2101			REA	7.5	Adj. WW	603	99						
BASIN EXT 7455			RATIO	101	Adj. YW	716	100						
WOOD MARIGOLD 4239 1675051			MPPA	102.86	ADG	0.68	105						
WOOD MARIGOLD 0107					WDA	1.66	101						
CE SCORE	HB 163	73 %	GM 51	13 %									
GROWTH TRAITS			MATERNAL TRAITS			CARCASS TRAITS							
CED	BW	WW	YW	MILK	ME	HPG	CEM	STAY	MARB	YG	CW	REA	FAT
11	0.6	59	93	28	0	11	7	14	0.75	0.09	12	-0.04	0.02
65 %	87 %	43 %	46 %	14 %	55 %	51 %	48 %	80 %	2 %	40 %	73 %	57 %	48 %

Lot
57

WOOD ANNIE 7251

BD 3/23/17	WVX 7251	# 3712359	99.2% AR/CAT. B	Performance/Stats									
5L INDEPENDENCE 560-298Y				%IMF		LBS	Ratio						
JACOBSON INDY 4142 1699262				RATIO		Act. BW	72	101					
JACOBSON LUBBOCK 2101				REA		Adj. WW	603	99					
LCC ABOVE & BEYOND 1300J				RATIO		Adj. YW							
WOOD ANNIE 4206 1675119				MPPA	106.29	ADG	0						
WOOD ANNIE 2127						WDA	0						
CE SCORE	HB 155	83 %	GM 50	31 %									
GROWTH TRAITS			MATERNAL TRAITS				CARCASS TRAITS						
CED	BW	WW	YW	MILK	ME	HPG	CEM	STAY	MARB	YG	CW	REA	FAT
15	-2.9	53	87	31	-2	9	8	13	0.64	0.16	9	-0.25	0.03
15 %	19 %	70 %	62 %	2 %	36 %	77 %	19 %	89 %	8 %	85 %	82 %	95 %	68 %



Pasture exposed to 6068,7088,7026, from 5/20 - 7/24. Est. due date 3/7/19

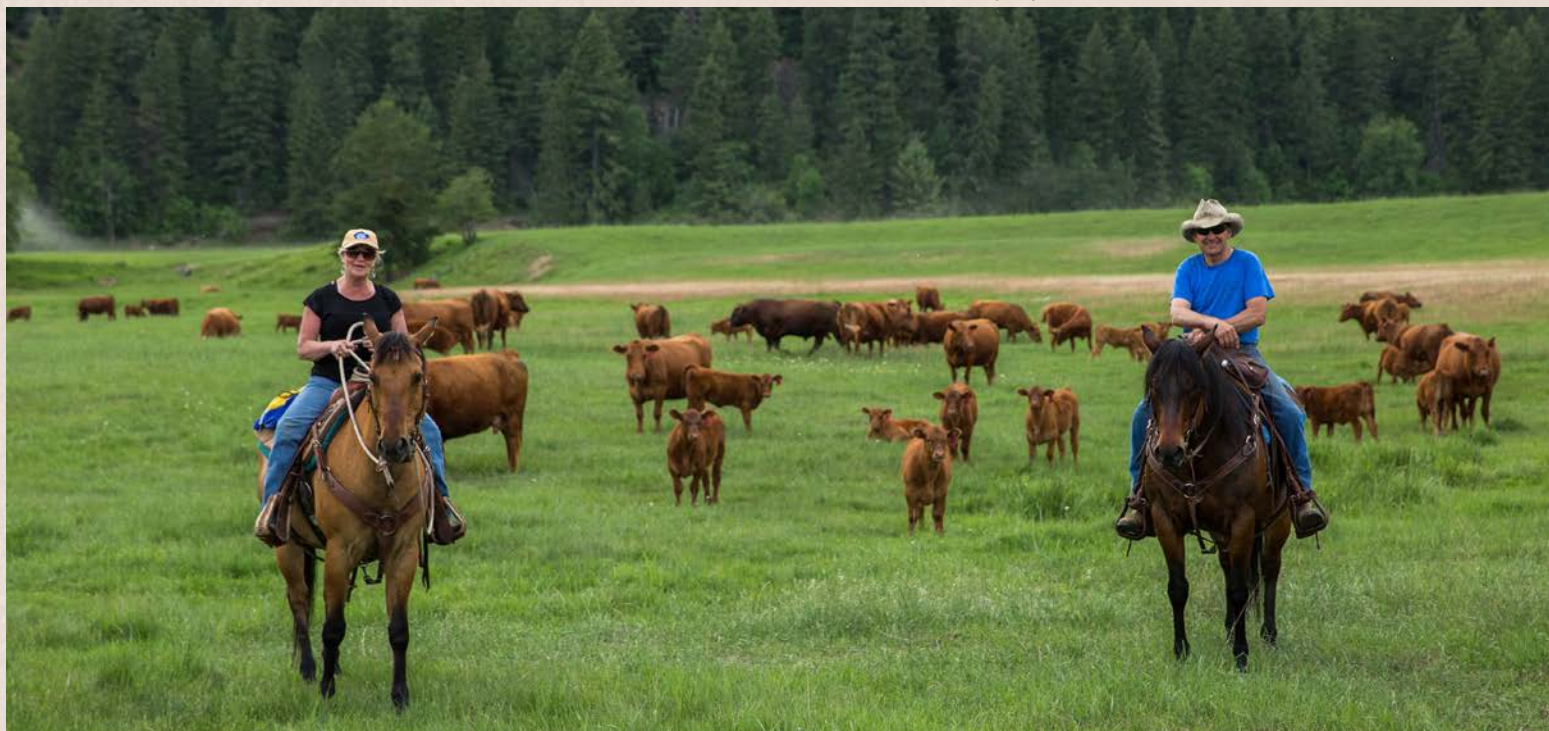
Lot
58

WOOD CALI ROSE 7270

BD 4/4/17	WVX 7270	# 3712377	100% AR /CAT. A	Performance/Stats									
5L INDEPENDENCE 560-298Y				%IMF	4.23	LBS	Ratio						
JACOBSON INDY 4142 1699262				RATIO	98	Act. BW	68	96					
JACOBSON LUBBOCK 2101				REA	6.46	Adj. WW	644	106					
FRITZ CALI ROSE 550B 1698019				RATIO	87	Adj. YW	708	99					
LAZYT3 CALI ROSE 903				MPPA	100	ADG	0.37	57					
CE SCORE	HB 159	78 %	GM 50	38 %									
GROWTH TRAITS			MATERNAL TRAITS				CARCASS TRAITS						
CED	BW	WW	YW	MILK	ME	HPG	CEM	STAY	MARB	YG	CW	REA	FAT
15	-2.6	56	91	26	2	10	8	13	0.48	0.08	9	-0.18	0.01
18 %	24 %	59 %	52 %	33 %	72 %	66 %	20 %	86 %	28 %	36 %	84 %	89 %	14 %



Pasture exposed to LASO Defender B35E from 5/20 - 7/24. Est. due date 4/10/19



Progeny of Dunn Infusion A526



DUNN INFUSION A526

BD 2/12/13	DUNN A526	#1609992	100% AR /CAT. A	Performance/Stats									
BECKTON NEBULA P P707			%IMF	4.42	LBS	Ratio							
BROWN ALLIANCE X7795	1384813		RATIO	89	Act. BW	77	94						
C-BAR & BROWN ABIGRACE T714			REA	13.41	Adj. WW	828	1269						
LSF RR CHARISMATIC 8810U			RATIO	112	Adj. YW	1269	110						
DUNN MATTIE 1034	1373070		MPPA	100.98	ADG	2.75	113						
DUNN MATTIE 0620					WDA	3.32	109						
CE SCORE	HB 168	70 %	GM	51	31 %								
GROWTH TRAITS			MATERNAL TRAITS				CARCASS TRAITS						
CED	BW	WW	YW	MILK	ME	HPG	CEM	STAY	MARB	YG	CW	REA	FAT
8	0.1	73	114	13	5	12	1	16	0.51	0.08	33	0.12	0.01
88 %	76 %	11 %	15 %	98 %	84 %	35 %	98 %	54 %	32 %	33 %	13 %	29 %	12 %

• Infusion was our Selection from the VF Dry Creek Ranch Sale in 2014. Purchased as a calving ease Sire he has turned out to be a tremendous Growth/ Carcass Bull.



Lot
59

WOOD CEDAR 7257

BD 3/27/17	WVX 7257	# 3712169	100% AR /CAT. A	Performance/Stats									
BROWN ALLIANCE X7795			%IMF	3.91	LBS	Ratio							
DUNN INFUSION A526 1609992			RATIO	96	Act. BW	80	102						
DUNN MATTIE 1034			REA	6.91	Adj. WW	632	110						
ANGELO CHINOOK 8081			RATIO	92	Adj. YW	721	109						
ANGELO CEDAR 0066 1376322			MPPA	108.8	ADG	0.5	97						
TR CEDAR TT708					WDA	1.74	105						
CE SCORE	HB 197 16 %	GM 50 31 %											
GROWTH TRAITS			MATERNAL TRAITS				CARCASS TRAITS						
CED	BW	WW	YW	MILK	ME	HPG	CEM	STAY	MARB	YG	CW	REA	FAT
12	-1.4	62	100	25	3	10	5	19	0.46	0.11	25	0.01	0.02
56 %	48 %	29 %	27 %	45 %	83 %	60 %	86 %	10 %	32 %	55 %	17 %	44 %	30 %



AI'd to VF Incredabull E756-A126 on 5/18/2018. Pasture exposed to Wood Indy 6010 from 5/20 - 7/24. Est. due date 2/25/19

Lot
60

WOOD PRIDE 7264

BD 3/30/17	WVX 7264	# 3712243	99.4% AR/CAT. B	Performance/Stats									
BROWN ALLIANCE X7795			%IMF	4.92	LBS	Ratio							
DUNN INFUSION A526 1609992			RATIO	112	Act. BW	78	99						
DUNN MATTIE 1034			REA	7.96	Adj. WW	600	113						
LASO COOL DUDE BC110XU			RATIO	105	Adj. YW	700	110						
WOOD PRIDE 2164 1542077			MPPA	104.36	ADG	0.57	98						
WOOD DESIGNER 9125					WDA	1.69	102						
CE SCORE	HB 173 40 %	GM 49 34 %											
GROWTH TRAITS			MATERNAL TRAITS				CARCASS TRAITS						
CED	BW	WW	YW	MILK	ME	HPG	CEM	STAY	MARB	YG	CW	REA	FAT
11	-0.6	63	99	22	4	11	5	16	.47	.09	21	.04	.02
28 %	53 %	34 %	33 %	22 %	69 %	42 %	12 %	56 %	12 %	51 %	68 %	39 %	83 %



AI'd to LASO Defender B29E on 5/18/2018. Pasture exposed to LASO Defender B35E from 5/20 - 7/24. Est. due date 3/7/19

Lot
61

WOOD ANNIE 7219

BD 3/3/17	WVX 7219	# 3712107	96.9% AR/CAT. B	Performance/Stats									
BROWN ALLIANCE X7795			%IMF	4.29	LBS	Ratio							
DUNN INFUSION A526 1609992			RATIO	105	Act. BW	70	89						
DUNN MATTIE 1034			REA	7.56	Adj. WW	594	104						
WOOD GRAND DE OSCE 263			RATIO	100	Adj. YW	663	100						
WOOD ANNIE 8147 1243889			MPPA	99.16	ADG	0.38	74						
WOOD ANNIE 332					WDA	1.6	96						
CE SCORE	HB 192 23 %	GM 49 50 %											
GROWTH TRAITS			MATERNAL TRAITS				CARCASS TRAITS						
CED	BW	WW	YW	MILK	ME	HPG	CEM	STAY	MARB	YG	CW	REA	FAT
11	-0.8	60	95	23	2	10	5	19	0.42	0.11	21	-0.04	0.02
69 %	62 %	37 %	40 %	63 %	74 %	69 %	80 %	11 %	41 %	53 %	31 %	57 %	27 %



AI'd to 5L Defender 76C on 5/18/2018. Pasture exposed to LASO Defender B35E from 5/20 - 7/24. Est. due date 2/25/19

Progeny of PCHFRK Conqueror 1312

• We purchased 1312 in the VF 2014 bull sale, as a calving ease bull and have used him on heifers successfully for several years. He adds depth, thickness and easy fleshing ability with an excellent disposition



PCHFRK CONQUEROR 1312

BD	1/2/13	PTMP	1312	#	1601293	100% AR /CAT.	A	Performance/Stats							
BECKTON JULIAN GG B571						%IMF	4.28		LBS	Ratio					
HXC CONQUEST 4405P						RATIO	101	Act. BW	74	102					
HXC ELLIE MAY MA638						REA	13.7	Adj. WW	730	1141					
LJC MISSION STATEMENT P27								Adj. YW	1141	99					
PCHFRK JENNA MISSION 1858						RATIO	95	ADG	2.56	97					
JINGLEBOB MAUDE 108						MPPA	101.92	WDA	2.88	99					
CE SCORE		HB	170	67 %	GM	51	27 %								
GROWTH TRAITS				MATERNAL TRAITS				CARCASS TRAITS							
CED	BW	WW	YW	MILK	ME	HPG	CEM	STAY	MARB	YG	CW	REA	FAT		
9	-2.4	69	110	24	0	12	4	16	0.34	0.04	6	0.01	0.02		
83 %	35 %	20 %	20 %	49 %	56 %	38 %	90 %	58 %	65 %	21 %	85 %	48 %	39 %		



WOOD REBALS 7070

BD	3/19/17	WVX	7070	#	3712181	100% AR /CAT.	A	Performance/Stats							
HXC CONQUEST 4405P						%IMF	3.51		LBS	Ratio					
PCHFRK CONQUEROR 1312						RATIO	0	Act. BW	83	98					
PCHFRK JENNA MISSION 1858						REA	9.56	Adj. WW	533	102					
WOOD OPTIMA 604								Adj. YW	636						
WOOD REBALS 1126						RATIO	0	ADG	0.64						
LOOSLI GOLD 5115						MPPA	104	WDA	1.58						
CE SCORE		HB	182	41 %	GM	48	67 %								
GROWTH TRAITS				MATERNAL TRAITS				CARCASS TRAITS							
CED	BW	WW	YW	MILK	ME	HPG	CEM	STAY	MARB	YG	CW	REA	FAT		
11	-2.2	52	83	28	-1	13	8	17	0.35	0.1	5	-0.08	0.03		
65 %	31 %	77 %	73 %	14 %	46 %	19 %	34 %	38 %	59 %	47 %	91 %	68 %	73 %		



Lot 62 - AI'ed to VF Incredabull E756-A126 on 5/18/2018. Pasture exposed to Wood Indy 6010 from 5/20 - 7/24. Est. due date 3/7/19

Lot 63 - AI'ed to 5L Defender 76C on 5/18/2018. Pasture exposed to LASO Defender B35E from 5/20 - 7/24. Est. due date 2/25/19



WOOD HEAVEN 7258

BD	3/27/17	WVX	7258	#	3712103	100% AR /CAT.	A	Performance/Stats							
HXC CONQUEST 4405P						%IMF	3.86		LBS	Ratio					
PCHFRK CONQUEROR 1312						RATIO	88	Act. BW	90	115					
PCHFRK JENNA MISSION 1858						REA	7.21	Adj. WW	569	107					
WOOD HEAVEN 513								Adj. YW	672	106					
LUNDGREN HEAVEN 9						RATIO	95	ADG	0.59	102					
101-4						MPPA	104.21	WDA	1.61	98					
CE SCORE		HB	166	69 %	GM	50	27 %								
GROWTH TRAITS				MATERNAL TRAITS				CARCASS TRAITS							
CED	BW	WW	YW	MILK	ME	HPG	CEM	STAY	MARB	YG	CW	REA	FAT		
6	0.8	66	105	24	5	11	3	17	0.35	0.08	8	-0.1	0.02		
98 %	89 %	14 %	16 %	50 %	93 %	44 %	97 %	43 %	59 %	37 %	85 %	73 %	39 %		



BIEBER SAMURAI C526

BD 3/16/15		RAB C526	# 3474723	100% AR /CAT. A				Performance/Stats					
LCC CHEYENNE B221L		%IMF	5.35		LBS	Ratio							
BIEBER ROUSE SAMURAI X22		RATIO	136	Act. BW	75								
GHR MARITA R31		REA	14.95	Adj. WW	727	1271							
LACY GOLD BAR 8123		RATIO	98	Adj. YW	1271								
BIEBER ENCHANTRESS 166Y		MPPA	99.1	ADG	3.4								
BASIN ENCHANTRESS 58UO				WDA	3.5								
CE SCORE		HB 174	54 %	GM 52	6 %								
GROWTH TRAITS		MATERNAL TRAITS				CARCASS TRAITS							
CED	BW	WW	YW	MILK	ME	HPG	CEM	STAY	MARB	YG	CW	REA	FAT
11	-2.8	63	101	23	4	9	6	15	0.72	0.13	17	0.05	0.04
60 %	18 %	25 %	24 %	61 %	80 %	70 %	58 %	63 %	3 %	67 %	48 %	31 %	90 %



We purchased C526 in Bieber's spring sale as a calving ease sire that also brought out cross genetics through his pedigree going back to the Basin Enchantress Cow Family. The Samurai breeding is well known for performance and muscling.



WOOD CASSIDY 7206

BD 2/18/17		WVX 7206	# 3712229	100% AR /CAT. A				Performance/Stats					
BIEBER ROUSE SAMURAI X22		%IMF	3.45		LBS	Ratio							
BIEBER SAMURAI C526		RATIO	85	Act. BW	82	105							
BIEBER ENCHANTRESS 166Y		REA	7.02	Adj. WW	598	105							
SUNR GENTLE GIANT 316W		RATIO	93	Adj. YW	662	100							
WOOD CASSIDY 2111		MPPA	103.85	ADG	0.35	68							
WOOD CASSIDY 8160				WDA	1.6	96							
CE SCORE		HB 184	37 %	GM 50	31 %								
GROWTH TRAITS		MATERNAL TRAITS				CARCASS TRAITS							
CED	BW	WW	YW	MILK	ME	HPG	CEM	STAY	MARB	YG	CW	REA	FAT
10	-1	62	97	24	2	10	6	18	0.49	0.12	11	-0.04	0.04
81 %	57 %	30 %	35 %	55 %	69 %	59 %	76 %	27 %	26 %	63 %	77 %	57 %	84 %



AI'd to WFL Merlin 018A on 5/18/2018. Pasture exposed to Wood Indy 6010 from 5/20 - 7/24. Est. due date 3/7/19



WOOD JOSIE MARIE 7210

BD 2/23/17		WVX 7210	# 3712397	95.3% AR /CAT. B				Performance/Stats					
BIEBER ROUSE SAMURAI X22		%IMF	4.32		LBS	Ratio							
BIEBER SAMURAI C526		RATIO	107	Act. BW	70	101							
BIEBER ENCHANTRESS 166Y		REA	9.12	Adj. WW	566	101							
ANDRAS NEW DIRECTION R240		RATIO	113	Adj. YW	675	99							
WOOD JOSIE MARIE 5232		MPPA	100.4	ADG	0.69	90							
BJW 590				WDA	1.57	98							
CE SCORE		HB 168	66 %	GM 50	25 %								
GROWTH TRAITS		MATERNAL TRAITS				CARCASS TRAITS							
CED	BW	WW	YW	MILK	ME	HPG	CEM	STAY	MARB	YG	CW	REA	FAT
13	-2.5	56	91	27	-1	9	7	15	0.62	0.08	18	0.18	0.04
48 %	25 %	58 %	52 %	26 %	46 %	71 %	50 %	70 %	9 %	36 %	46 %	13 %	87 %




AI'd to VF Incredabull E756-A126 on 5/18/2018. Pasture exposed to Wood Indy 6010 from 5/20 - 7/24. Est. due date 2/25/19

Progeny of GMRA Epic 4219




- Purchased in green Mountain's 2015 Spring Bull sale for bloodlines and genetic diversification. Epic 4219 brings two major herd sires with his influence with 397K and Bieber Make Mimi.

 GMRA EPIC 4219													
BD	1/14/14	GMRA 4219	#	1681626	100% AR /CAT.	A	Performance/Stats						
		BECKTON EPIC K F075			%IMF	2.88			LBS	Ratio			
		BECKTON EPIC R397 K		1042135	RATIO	79		Act. BW	82	99			
		BECKTON KIT F468 JL			REA	12.6		Adj. WW	612	1081			
		BIEBER MAKE MIMI 7249			RATIO	109		Adj. YW	1081	95			
		GMRA THELMA 507		1039235	MPPA	99.03		ADG	2.92	98			
		GMRA THELMA 303						WDA	2.91	94			
CE SCORE		HB 196	32 %	GM 49	58 %								
GROWTH TRAITS				MATERNAL TRAITS					CARCASS TRAITS				
CED	BW	WW	YW	MILK	ME	HPG	CEM	STAY	MARB	YG	CW	REA	FAT
14	-1.8	54	91	31	-5	13	7	18	0.15	0.05	16	0.2	0.03
42 %	45 %	74 %	62 %	7 %	21 %	32 %	43 %	34 %	93 %	22 %	58 %	20 %	59 %



Pasture exposed to LASO Defender B35E from 5/20 - 7/24.
Est. due date 2/25/19

 WOOD DINA 7208													
BD	2/20/17	WVX 7208	#	3712303	100% AR /CAT.	A	Performance/Stats						
		BECKTON EPIC R397 K			%IMF	3.04			LBS	Ratio			
		GMRA EPIC 4219		1681626	RATIO	90		Act. BW	85	111			
		GMRA THELMA 507			REA	8.56		Adj. WW	619	111			
		KOESTER CHIVAS 005			RATIO	110		Adj. YW	755	109			
		WOOD DINA 3210		1597050	MPPA	105.33		ADG	0.81	104			
		WVX 672						WDA	1.78	108			
CE SCORE		HB 177	50 %	GM 49	57 %								
GROWTH TRAITS				MATERNAL TRAITS					CARCASS TRAITS				
CED	BW	WW	YW	MILK	ME	HPG	CEM	STAY	MARB	YG	CW	REA	FAT
9	0.3	61	97	29	0	13	5	17	0.2	0.06	18	0.15	0.03
88 %	83 %	35 %	36 %	10 %	57 %	21 %	84 %	36 %	95 %	24 %	43 %	17 %	60 %

Lot
67

WOOD SNOWFLAKE 7218

BD 3/2/17	WVX 7218	#	3712281	98.8% AR/CAT. B	Performance/Stats								
BECKTON EPIC R397 K				%IMF	3.74		LBS	Ratio					
GMRA EPIC 4219 1681626				RATIO	89	Act. BW	76	99					
GMRA THELMA 507				REA	8.15	Adj. WW	531	98					
GMRA TRILOGY 0226				RATIO	100	Adj. YW	632	101					
WOOD SNOWFLAKE 3219 1596979				MPPA	98.67	ADG	0.59	130					
WVX 451						WDA	1.54	98					
CE SCORE	HB 193	21 %	GM 48	62 %									
GROWTH TRAITS			MATERNAL TRAITS				CARCASS TRAITS						
CED	BW	WW	YW	MILK	ME	HPG	CEM	STAY	MARB	YG	CW	REA	FAT
14	-2.2	55	88	26	-1	8	10	18	0.24	0.07	14	0.17	0.04
28 %	31 %	62 %	59 %	32 %	40 %	87 %	6 %	23 %	89 %	29 %	62 %	14 %	86 %



AI'd to LASO Defender B29E on 5/18/2018. Pasture exposed to LASO Defender B35E from 5/20 - 7/24. Est. due date 3/7/19

Lot
68

WOOD MARIGOLD 7254

BD 3/25/17	WVX 7254	#	3712289	100% AR /CAT. A	Performance/Stats								
BECKTON EPIC R397 K				%IMF			LBS	Ratio					
GMRA EPIC 4219 1681626				RATIO		Act. BW	79	103					
GMRA THELMA 507				REA		Adj. WW	501	90					
BASIN EXT 7455				RATIO		Adj. YW							
WOOD MARIGOLD 3246 1596991				MPPA	99.33	ADG	0						
WVX 654						WDA	0						
CE SCORE	HB 200	13 %	GM 49	57 %									
GROWTH TRAITS			MATERNAL TRAITS				CARCASS TRAITS						
CED	BW	WW	YW	MILK	ME	HPG	CEM	STAY	MARB	YG	CW	REA	FAT
12	-1.2	51	85	31	1	11	8	19	0.27	0.07	13	0.05	0.03
49 %	53 %	78 %	69 %	3 %	65 %	37 %	30 %	11 %	82 %	29 %	66 %	34 %	57 %



Pasture exposed to 6068,7088,7026, from 5/20 - 7/24. Est. due date 3/7/19

Lot
69

WOOD REBALAS 7214

BD 2/26/17	WVX 7214	#	3712297	100% AR /CAT. A	Performance/Stats								
BECKTON EPIC R397 K				%IMF	3.5		LBS	Ratio					
GMRA EPIC 4219 1681626				RATIO	104	Act. BW	71	93					
GMRA THELMA 507				REA	7.07	Adj. WW	471	84					
KOESTER CHIVAS 005				RATIO	91	Adj. YW	643	93					
WOOD REBALAS 3212 1597030				MPPA	98	ADG	1.03	132					
WOOD REBALAS 9101						WDA	1.58	96					
CE SCORE	HB 191	24 %	GM 49	50 %									
GROWTH TRAITS			MATERNAL TRAITS				CARCASS TRAITS						
CED	BW	WW	YW	MILK	ME	HPG	CEM	STAY	MARB	YG	CW	REA	FAT
12	-1	55	90	27	0	12	8	18	0.21	0.1	21	0.06	0.03
54 %	57 %	62 %	55 %	22 %	53 %	27 %	28 %	28 %	94 %	46 %	31 %	32 %	54 %

AI'd to 5L Defender 76C on 5/18/2018. Pasture exposed to LASO Defender B35E from 5/20 - 7/24. Est. due date 2/25/19

Lot
70

WOOD SUGAR 7215

BD 2/26/17	WVX 7215	#	3712315	73.8% AR/CAT. 3	Performance/Stats								
BECKTON EPIC R397 K				%IMF			LBS	Ratio					
GMRA EPIC 4219 1681626				RATIO	0	Act. BW	82	106					
GMRA THELMA 507				REA		Adj. WW	493	88					
WOOD GRAND MAKER 815				RATIO	0	Adj. YW	603	87					
WOOD SUGAR 3539 1672333				MPPA	94.67	ADG	0.68	87					
WVX8464						WDA	1.48	90					
CE SCORE	HB 154	45 %	GM 48	50 %									
GROWTH TRAITS			MATERNAL TRAITS				CARCASS TRAITS						
CED	BW	WW	YW	MILK	ME	HPG	CEM	STAY	MARB	YG	CW	REA	FAT
13	-0.4	51	78	24	-5	9	7	14	0.03	-0.17	7	0.41	-0.01
34 %	48 %	50 %	47 %	25 %	50 %	32 %	42 %	50 %	95 %	28 %	66 %	19 %	54 %

AI'd to VF Incredabull E756-A126 on 5/18/2018. Pasture exposed to Wood Indy 6010 from 5/20 - 7/24. Est. due date 3/7/19

Progeny of GMRA Epic 4219



WOOD CLARICE 7234

BD 3/11/17	WVX 7234	#	3712211	100% AR /CAT. A	Performance/Stats								
BECKTON EPIC R397 K				%IMF	4.64		LBS	Ratio					
GMRA EPIC 4219 1681626				RATIO	0	Act. BW	81	103					
GMRA THELMA 507				REA	7.51	Adj. WW	605						
COLEY'S WELL DONE 9101				RATIO	0	Adj. YW	675						
WOOD CLARICE 1157 1454509				MPPA	102.31	ADG	0.38						
LASO CHAURISE BA29U				WDA	1.57								
CE SCORE	HB 172	58 %	GM 49	46 %									
GROWTH TRAITS				MATERNAL TRAITS				CARCASS TRAITS					
CED	BW	WW	YW	MILK	ME	HPG	CEM	STAY	MARB	YG	CW	REA	FAT
10	0.1	59	95	29	1	10	5	17	0.42	0.12	18	0.04	0.04
84 %	80 %	44 %	40 %	9 %	62 %	67 %	90 %	36 %	41 %	63 %	46 %	37 %	83 %

AI'd to LLC Above & Beyond 1300J on 5/18/2018. Pasture exposed to Wood Indy 6010 from 5/20 - 7/24. Est. due date 2/25/19



WOOD REBALAS 7240

BD 3/12/17	WVX 7240	#	3712245	100% AR /CAT. A	Performance/Stats								
BECKTON EPIC R397 K				%IMF	3.86		LBS	Ratio					
GMRA EPIC 4219 1681626				RATIO	95	Act. BW	77	100					
GMRA THELMA 507				REA	8.83	Adj. WW	583	102					
SUNR GENTLE GIANT 316W				RATIO	117	Adj. YW	681	103					
WOOD REBALAS 2168 1542090				MPPA	98.55	ADG	0.56	109					
WOOD RAMBELLAS				WDA	1.66								
CE SCORE	HB 190	26 %	GM 48	78 %									
GROWTH TRAITS				MATERNAL TRAITS				CARCASS TRAITS					
CED	BW	WW	YW	MILK	ME	HPG	CEM	STAY	MARB	YG	CW	REA	FAT
16	-3.1	48	76	29	-8	10	8	18	0.26	0.05	4	0.08	0.04
12 %	16 %	87 %	84 %	10 %	5 %	65 %	30 %	28 %	85 %	18 %	95 %	28 %	81 %

AI'd to 5L Defender 76C on 5/18/2018. Pasture exposed to LASO Defender B35E from 5/20 - 7/24. Est. due date 2/25/19

Progeny of 5L Defender 76C & 93C



5L DEFENDER 560-30Z

BD 2/4/12	FLR 30Z	#	1549933	100% AR /CAT. A	Performance/Stats								
5L SIGNATURE 5615				%IMF	7.18		LBS	Ratio					
5L ADVOCATE 817-14W 1330290				RATIO	141	Act. BW							
5L MARTA 345-817				REA	15.17	Adj. WW	664						
TC STOCKMAN 365				RATIO	114	Adj. YW	1214						
5L BLACK ADINA 525-560 727792				MPPA	100.98	ADG	3.42						
5L ADINA 293-525				WDA	3.3								
CE SCORE	HB 126	96 %	GM 53	9 %									
GROWTH TRAITS				MATERNAL TRAITS				CARCASS TRAITS					
CED	BW	WW	YW	MILK	ME	HPG	CEM	STAY	MARB	YG	CW	REA	FAT
16	-4.1	60	99	20	-6	3	6	9	0.9	-0.04	4	0.1	0.01
21 %	13 %	52 %	43 %	80 %	16 %	99 %	69 %	98 %	2 %	7 %	88 %	32 %	11 %

• 30Z can be described as the Carcass King. With Marbling in the top 3% of the chart his ability to pass it on to the future is remarkable. With IMF being over 60% heritable his progeny and Grand Progeny are setting new standards in Red Angus. IMF 7.18, Ratio 141, REA 15.17, Ratio 114. His progeny also retain his excellent disposition.

Got Marbling?

• We purchased 93C with Jacobson Red Angus in 5L 2016 Spring Sale. He has proven to be not only a source for excellent carcass quality but has that curve bender growth from a 74# act. BW, Ratio 96 to a 703 WW Ratio 109, YW 1343 Ratio 113, IMF 6.73 Ratio 139, REA 13.55 Ratio 105, excellent disposition so highly sought after. Sire of lot 74



5L DEFENDER 1260-93C

BD 2/6/15	FLR 93C	#	3483571	100% AR /CAT. A	Performance/Stats								
5L ADVOCATE 817-14W				%IMF	6.73		LBS	Ratio					
5L DEFENDER 560-30Z 1549933				RATIO	139	Act. BW	74	96					
5L BLACK ADINA 525-560				REA	13.55	Adj. WW	700	1339					
5L TRADESMAN 1715-6237				RATIO	105	Adj. YW	1339	113					
5L FIREFLY 61-1260 1380337				MPPA	100	ADG	3.99	118					
5L FIREFLY 89-61				WDA	3.6								
CE SCORE	HB 219	9 %	GM 55	2 %									
GROWTH TRAITS				MATERNAL TRAITS				CARCASS TRAITS					
CED	BW	WW	YW	MILK	ME	HPG	CEM	STAY	MARB	YG	CW	REA	FAT
23	-4.1	61	103	22	-2	11	13	15	0.81	0	13	0.08	0
1 %	13 %	48 %	33 %	69 %	38 %	56 %	1 %	66 %	4 %	11 %	68 %	35 %	10 %

Progeny of 5L Defender 76C & 93C



5L DEFENDER 2650-76C

BD 2/5/15	FLR 76C	#3483253	100% AR /CAT. A	Performance/Stats									
5L ADVOCATE 817-14W			%IMF	4.23		LBS	Ratio						
5L DEFENDER 560-30Z 1549933			RATIO	87	Act. BW								
5L BLACK ADINA 525-560			REA	13.34	Adj. WW	614	1126						
5L DOUBLE BLAZE 1134-8576			RATIO	103	Adj. YW	1126	95						
5L OSCE 2948-2650 1379685			MPPA	101.85	ADG	3.2	95						
5L OCSE 233-2948					WDA	3.02	94						
CE SCORE	HB 168	64 %	GM 49	52 %									
GROWTH TRAITS				MATERNAL TRAITS				CARCASS TRAITS					
CED	BW	WW	YW	MILK	ME	HPG	CEM	STAY	MARB	YG	CW	REA	FAT
21	-5.7	55	89	31	-3	9	10	13	0.53	0.09	3	0.04	0.05
1 %	1 %	59 %	53 %	4 %	27 %	69 %	3 %	88 %	14 %	44 %	91 %	33 %	94 %

• Used heavily on heifers; 76C was another Selection from 5L Ranch Spring 2016 Sale. He was one of only 7 Bulls that Larry felt deserved the Wide Body Score of 9!! His natural thickness and depth of body was unsurpassed and he is passing it on to his progeny. The females from this bull will be Tremendous. 76C has a unreal friendly easy going temperament. Sire of lot 73



WOOD DUNEE 7263

BD 3/29/17	WVX 7263	# 3712391	96.9% AR/CAT. B	Performance/Stats									
5L DEFENDER 560-30Z			%IMF	4.37		LBS	Ratio						
5L DEFENDER 2650-76C 3483253			RATIO	0	Act. BW	71	105						
5L OSCE 2948-2650			REA	7.45	Adj. WW	576	104						
WOOD JEROME 3065			RATIO	0	Adj. YW	661							
WOOD DUNEE 5281 3478252			MPPA	101.6	ADG	0.53							
WOOD DUNEE 686					WDA	1.47							
CE SCORE	HB 156	82 %	GM 49	50 %									
GROWTH TRAITS				MATERNAL TRAITS				CARCASS TRAITS					
CED	BW	WW	YW	MILK	ME	HPG	CEM	STAY	MARB	YG	CW	REA	FAT
14	-1.6	58	93	30	0	6	7	14	0.49	0.13	11	-0.04	0.04
22 %	44 %	50 %	47 %	5 %	56 %	96 %	38 %	80 %	26 %	66 %	77 %	57 %	89 %



AI'ed to LASO Defender B29E on 5/18/2018. Pasture exposed to LASO Defender B35E from 5/20 - 7/24. Est. due date 4/10/19



WOOD REBALAS 7203

BD 2/8/17	WVX 7203	# 3712225	100% AR /CAT. A	Performance/Stats									
5L DEFENDER 560-30Z			%IMF	4.61		LBS	Ratio						
5L DEFENDER 1260-93C 3483571			RATIO	137	Act. BW	80	104						
5L FIREFLY 61-1260			REA	7.94	Adj. WW	623	112						
RED NORTHLINE FAT TONY 605U			RATIO	102	Adj. YW	770	112						
WOOD REBALAS 2118 1542003			MPPA	101.45	ADG	0.87	112						
WVX 765					WDA	1.85	112						
CE SCORE	HB 196	17 %	GM 52	7 %									
GROWTH TRAITS				MATERNAL TRAITS				CARCASS TRAITS					
CED	BW	WW	YW	MILK	ME	HPG	CEM	STAY	MARB	YG	CW	REA	FAT
15	-0.6	62	100	26	-1	7	10	17	0.58	0.03	10	0.05	0.02
15 %	66 %	28 %	28 %	34 %	40 %	93 %	6 %	40 %	13 %	13 %	81 %	34 %	25 %



AI'ed to VF Incredabull E756-A126 on 5/18/2018 to. Pasture exposed to Wood Indy 6010 from 5/20 - 7/24. Est. due date 3/7/19

****Junior showman alert show heifer prospect****

Wood V bar X Bred Heifers



AI'd to LLC Above & Beyond 1300J on 5/18/2018. Pasture exposed to Wood Indy 6010 from 5/20 - 7/24. Est. due date 2/25/19

Lot 75		WOOD REBALAS 7253												
BD 3/22/17		WVX 7253		# 3712191		100% AR /CAT. A			Performance/Stats					
GMRA VENGEANCE 1254						%IMF		3.18		LBS		Ratio		
FRITZ VENGEANCE 661B		1697993				RATIO		0		Act. BW		66		
FRITZ DUCHES 8001						REA		8.32		Adj. WW		500		
COLEY'S WELL DONE 9101						RATIO		0		Adj. YW		634		
WOOD REBALAS 1159		1429564				MPPA		96		ADG		0.84		
WOOD REBALAS 8144						CE SCORE		HB 168 66 %		GM 50 32 %		WDA 1.56		
GROWTH TRAITS				MATERNAL TRAITS				CARCASS TRAITS						
CED	BW	WW	YW	MILK	ME	HPG	CEM	STAY	MARB	YG	CW	REA	FAT	
6	2.5	68	110	21	5	9	1	18	0.34	0.13	26	0.02	0.03	
98 %	98 %	10 %	8 %	84 %	93 %	72 %	99 %	26 %	62 %	71 %	14 %	41 %	57 %	



AI'd to 5L Defender 76C on 5/18/2018. Pasture exposed to LASO Defender B35E from 5/20 - 7/24. Est. due date 3/7/19

Lot 76		WOOD ANNIE 7217												
BD 2/26/17		WVX 7217		# 3712337		98.4% AR/CAT. B			Performance/Stats					
WOOD ICE CAP 2010						%IMF		4.07		LBS		Ratio		
WOOD ICICLE 5071		3478391				RATIO		94		Act. BW		80 112		
WOOD RAZZLE 0106						REA		8.47		Adj. WW		727 120		
5L MTN SIGN 435-10Z						RATIO		114		Adj. YW		916 128		
WOOD ANNIE 4208		1675031				MPPA		105.71		ADG		1.15 177		
WOOD ANNIE 8147						CE SCORE		HB 184 36 %		GM 50 21 %		WDA 2.2 133		
GROWTH TRAITS				MATERNAL TRAITS				CARCASS TRAITS						
CED	BW	WW	YW	MILK	ME	HPG	CEM	STAY	MARB	YG	CW	REA	FAT	
11	-0.1	66	108	27	6	10	7	17	0.5	0.18	31	0	0.04	
74 %	76 %	16 %	12 %	23 %	94 %	55 %	38 %	36 %	25 %	91 %	6 %	46 %	77 %	



Pasture exposed to 6068,7088,7026, from 5/20 - 7/24. Est. due date 3/7/19

Lot 77		WOOD LOUISE 7276												
BD 5/2/17		WVX 7276		# 3712241		100% AR /CAT. A			Performance/Stats					
5L MTN SIGN 435-10Z						%IMF				LBS		Ratio		
WOOD MTN. SIDE 5033		3478219				RATIO				Act. BW		75 96		
GMRA LENA 927						REA				Adj. WW		594 106		
FRITZ GRAND OSCAR 8014						RATIO				Adj. YW				
WOOD LOUISE 2100		1542075				MPPA		107.69		ADG		0		
SRR LOUISE 019-857						CE SCORE		HB 197 16 %		GM 50 22 %		WDA 0		
GROWTH TRAITS				MATERNAL TRAITS				CARCASS TRAITS						
CED	BW	WW	YW	MILK	ME	HPG	CEM	STAY	MARB	YG	CW	REA	FAT	
14	-1.9	59	98	30	3	10	8	18	0.51	0.1	21	0.04	0.03	
32 %	38 %	42 %	33 %	6 %	82 %	55 %	21 %	24 %	23 %	50 %	30 %	37 %	51 %	

Lot
78

WOOD DESIGNER 7232

BD 3/10/17	WVX 7232	# 3712219	85.2% AR/CAT. 3	Performance/Stats														
SUNR ULTIMATE RIBEYE 672Z				%IMF		LBS	Ratio											
SUNR 935B 1680962				RATIO		Act. BW	101	129										
SUNR ANDREA 935				REA		Adj. WW	564	121										
5L BLACK IDEA 2398-191X				RATIO		Adj. YW												
WOOD CHOC. DEISGN 2155 1541993				MPPA	104.36	ADG	0											
BJW BLACK DESIGN 213						WDA	0											
CE SCORE	HB 176	30 %	GM 50	23 %														
GROWTH TRAITS				MATERNAL TRAITS				CARCASS TRAITS										
CED	BW	WW	YW	MILK	ME	HPG	CEM	STAY	MARB	YG	CW	REA	FAT					
7	4.3	72	112	23	-2	12	2	17	0.25	-0.02	16	0.26	0.01					
96 %	98 %	5 %	5 %	37 %	74 %	9 %	98 %	21 %	35 %	65 %	38 %	33 %	93 %					



Pasture exposed to 6068,7088,7026, from 5/20 - 7/24. Est. due date 3/7/19

Lot
79

WOOD PRIDE 7229

BD 3/8/17	WVX 7229	# 3712227	100% AR /CAT. A	Performance/Stats														
DUNN INFUSION A526				%IMF	3.81	LBS	Ratio											
WOOD SCOTCHMAN 5060 3478342				RATIO	93	Act. BW	77	100										
WOOD CASSIDY 2111				REA	6.56	Adj. WW	551	96										
SUNR GENTLE GIANT 316W				RATIO	87	Adj. YW	597	90										
WOOD PRIDE 2178 1542015				MPPA	100.73	ADG	0.23	45										
WOOD MTN PRIDE 8140						WDA	1.42	85										
CE SCORE	HB 197	16 %	GM 49	44 %														
GROWTH TRAITS				MATERNAL TRAITS				CARCASS TRAITS										
CED	BW	WW	YW	MILK	ME	HPG	CEM	STAY	MARB	YG	CW	REA	FAT					
12	-1.2	57	92	23	-2	10	6	19	0.39	0.09	4	-0.13	0.03					
60 %	53 %	53 %	49 %	65 %	33 %	60 %	69 %	11 %	48 %	44 %	93 %	80 %	57 %					



Lot 79 as a calf - AI'ed to VF Incredabull E756-A126 on 5/18/2018. Pasture exposed to Wood Indy 6010 from 5/20 - 7/24. Est. due date 3/7/19



Lot
80-116

36 Commercial Bred Heifers

Calving dates February 25th to April 25th

Right from the heart of our commercial Cow herd these heifers have been selected through an intense scrutinizing culling process, concentrated on structure, disposition, fleshing ability, and most importantly fertility. The heifers are developed through the winter on strictly a forage based diet, no concentrates are fed. This ensures the selection of only the most efficient females come spring and preparation for breeding.

The heifers selected for Replacements are then given the full vaccination regiment of preg guard 10fp, eight-way, multi min, and poured with dectomax. They were Pasture exposed for 65 days with V bar X Bulls selected for calving ease, optimum growth and carcass merit.


The heifers were preg checked October 11th and boosted with the same vaccination regiment. Estimated calving dates were determined at that time. A list of the heifers and their individual calving dates will be available on sale day.


The Foundation Cowherd has been established from generations of selection since pre 1970s with Hereford, Angus, and Simmental influence. Red Angus was introduced in the mid-1990s. Selection criteria on this cow herd has not wavered for the past 50 years. Although the Cowherd is now red hided the influence of crossbreeding is still having an impact in performance on these heifers.



Commercial Heifer Service Sires




 **Wood Ultimate Ribeye 6068**
Reg. #3546616

 **Wood Indy 7088**
Reg. #3712365

CESCORE		HB 182 42 %			GM 50 34 %									
GROWTH TRAITS				MATERNAL TRAITS				CARCASS TRAITS						
CED	BW	WW	YW	MILK	ME	HPG	CEM	STAY	MARB	YG	CW	REA	FAT	
16	-0.4	64	102	28	-1	13	8	15	0.25	0.01	17	0.33	0.03	
11 %	71 %	23 %	23 %	16 %	39 %	17 %	18 %	73 %	87 %	10 %	47 %	3 %	73 %	

CESCORE		HB 158 80 %			GM 50 24 %									
GROWTH TRAITS				MATERNAL TRAITS				CARCASS TRAITS						
CED	BW	WW	YW	MILK	ME	HPG	CEM	STAY	MARB	YG	CW	REA	FAT	
14	-0.9	61	96	17	-2	11	8	13	0.54	0.02	15	0.15	0.01	
25 %	60 %	33 %	38 %	97 %	37 %	39 %	33 %	90 %	18 %	10 %	57 %	17 %	22 %	

 **Wood Ultimate Ribeye 7026**
Reg. # 3712269

CESCORE		HB 181 44 %			GM 49 58 %									
GROWTH TRAITS				MATERNAL TRAITS				CARCASS TRAITS						
CED	BW	WW	YW	MILK	ME	HPG	CEM	STAY	MARB	YG	CW	REA	FAT	
10	0	58	93	28	0	12	5	18	0.33	0.07	0	-0.07	0.03	
82 %	78 %	47 %	46 %	17 %	56 %	35 %	79 %	28 %	66 %	28 %	98 %	65 %	73 %	

“Every cow must produce an income every year even if she has to sacrifice her own life to do so” - James R. Wood 1970



Coming 2 Year-Old Bulls



LASO Protector C72E, Reg. # 3785727

Lot 121 LASO PROTECTOR C72E													
BD	2/12/17	LASO	C72E	#	3785727	100% AR /CAT. A				Performance/Stats			
5L DEFENDER 560-30Z		%IMF	4.64			LBS	Ratio						
5L DEFENDER	2263-45C	3483495	RATIO	94	Act. BW	50	70						
5L HAZEL	2159-2263		REA	11.96	Adj. WW	565	89						
C-BAR	ELDORADO 114Z		RATIO	97	Adj. YW	879	85						
LASO TOPJACK	X2C	3481031	MPPA	96.57	ADG	1.95	78						
LASO TOPJACK	BB47X				WDA	2.18	83						
CE SCORE	HB 143	91 %	GM	49	60 %								
GROWTH TRAITS				MATERNAL TRAITS				CARCASS TRAITS					
CED	BW	WW	YW	MILK	ME	HPG	CEM	STAY	MARB	YG	CW	REA	FAT
17	-6.5	41	64	28	1	10	8	12	0.7	0	-7	-0.04	0.02
5 %	1 %	97 %	96 %	15 %	61 %	66 %	23 %	93 %	4 %	8 %	99 %	57 %	32 %



LASO Defender C76E, Reg. # 3785791

Lot 122 LASO DEFENDER C76E													
BD	1/1/17	LASO	C76E	#	3785791	100% AR /CAT. A				Performance/Stats			
5L ADVOCATE 817-14W		%IMF	5.27			LBS	Ratio						
5L DEFENDER	560-30Z	1549933	RATIO	107	Act. BW	83	109						
5L BLACK ADINA	525-560		REA	11.98	Adj. WW	602	95						
C-BAR	ELDORADO 114Z		RATIO	97	Adj. YW	1004	97						
LASO TOW KANA	U111C	3481156	MPPA	95.43	ADG	2.5	100						
LASO TOW KANA	BB75U				WDA	2.54	97						
CE SCORE	HB 128	95 %	GM	51	10 %								
GROWTH TRAITS				MATERNAL TRAITS				CARCASS TRAITS					
CED	BW	WW	YW	MILK	ME	HPG	CEM	STAY	MARB	YG	CW	REA	FAT
14	-2.1	54	91	22	-1	8	6	10	0.81	0.03	6	-0.02	0.01
30 %	34 %	66 %	52 %	73 %	38 %	91 %	78 %	97 %	1 %	13 %	91 %	51 %	18 %

Lot
123

LASO DEFENDER C109E

BD 12/31/16 LASO C109E		#3785767		100% AR /CAT. A		Performance/Stats							
5L ADVOCATE 817-14W		%IMF	5.81		LBS	Ratio							
5L DEFENDER 560-30Z 1549933		RATIO	118	Act. BW	84	109							
5L BLACK ADINA 525-560		REA	12.07	Adj. WW	597	94							
BROWN ALLIANCE X7795		RATIO	98	Adj. YW	993	96							
LASO BONANZA A177C 3481116		MPPA	96.57	ADG	2.46	98							
LASO BONANZA T66A				WDA	2.52	96							
CE SCORE	HB 140	92 %	GM 51	21 %									
GROWTH TRAITS			MATERNAL TRAITS				CARCASS TRAITS						
CED	BW	WW	YW	MILK	ME	HPG	CEM	STAY	MARB	YG	CW	REA	FAT
13	-1.3	58	94	24	-4	7	6	12	0.76	0.1	10	-0.11	0.02
48 %	51 %	50 %	44 %	55 %	17 %	92 %	76 %	92 %	2 %	49 %	80 %	75 %	48 %



LASO Defender C109E, Reg. # 3785767

Lot
124

LASO RANCHERO X2E

BD 1/29/17 LASO X2E		#3785613		100% AR /CAT. A		Performance/Stats							
5L ADVOCATE 817-14W		%IMF	3.43		LBS	Ratio							
5L DEFENDER 560-30Z 1549933		RATIO	75	Act. BW	70	87							
5L BLACK ADINA 525-560		REA	13.53	Adj. WW	703	108							
5L MTN TRADER 2173-7377		RATIO	104	Adj. YW	1029	96							
LASO TOPIACK BB47X 1388781		MPPA	103.48	ADG	2.04	78							
LCC TOPIACK LA073				WDA	2.72	93							
CE SCORE	HB 152	85 %	GM 50	36 %									
GROWTH TRAITS			MATERNAL TRAITS				CARCASS TRAITS						
CED	BW	WW	YW	MILK	ME	HPG	CEM	STAY	MARB	YG	CW	REA	FAT
14	-3.5	57	90	27	1	6	7	14	0.55	-0.03	0	0.09	0.01
27 %	12 %	55 %	56 %	24 %	61 %	96 %	50 %	84 %	17 %	6 %	98 %	26 %	20 %



LASO Ranchero X2E, Reg. # 3785613



5L Defender 560-30Z
Sire of Lots 122-124
Grand Sire of Lot 121

Coming 2 Year-Old Bulls



LASO Blocker Z148E, Reg. # 3785625

Lot
125

LASO BLOCKER Z148E

BD 1/30/17	LASO Z148E	#3785625	100% AR /CAT. A	Performance/Stats									
GMRA DEUCES 2222			%IMF	3.79		LBS	Ratio						
LASO DEUCES T69B 1697298			RATIO	82	Act. BW	86	108						
LASO TOWKANA XC124T			REA	14.35	Adj. WW	568	87						
FEDDES GRAND CHER 7125			RATIO	110	Adj. YW	1069	100						
FEDDES BLOCKANA Z77 1516304			MPPA	96.92	ADG	3.12	119						
FEDDES BLOCKANA 351					WDA	3.01	103						
CE SCORE	HB 166	69 %	GM 49	40 %									
GROWTH TRAITS			MATERNAL TRAITS				CARCASS TRAITS						
CED	BW	WW	YW	MILK	ME	HPG	CEM	STAY	MARB	YG	CW	REA	FAT
11	-0.5	48	87	30	1	11	5	16	0.46	0.12	20	0.16	0.05
77 %	69 %	86 %	62 %	4 %	64 %	38 %	81 %	59 %	32 %	59 %	35 %	15 %	94 %



LASO Circuit Breaker S22E, Reg. # 3785593

Lot
126

LASO CIRCUIT BREAKER S22E

BD 1/30/17	LASO S22E	#3785593	100% AR /CAT. A	Performance/Stats									
GMRA DEUCES 2222			%IMF	4.02		LBS	Ratio						
LASO DEUCES T69B 1697298			RATIO	87	Act. BW	87	110						
LASO TOWKANA XC124T			REA	13.45	Adj. WW	685	105						
5L POWER STROKE 2549			RATIO	103	Adj. YW	1153	107						
LASO MISSY DR142S 1106350			MPPA	103.52	ADG	2.91	111						
LONK MISS JR J920					WDA	3.14	108						
CE SCORE	HB 182	42 %	GM 49	60 %									
GROWTH TRAITS			MATERNAL TRAITS				CARCASS TRAITS						
CED	BW	WW	YW	MILK	ME	HPG	CEM	STAY	MARB	YG	CW	REA	FAT
10	0.4	57	93	28	4	10	5	19	0.54	0.17	26	0.05	0.05
87 %	84 %	52 %	47 %	13 %	86 %	55 %	79 %	17 %	18 %	88 %	14 %	34 %	92 %



LASO Cayuse B34E, Reg. # 3785703

Lot
127

LASO CAYUSE B34E

BD 1/27/17	LASO B34E	#3785703	100% AR /CAT. A	Performance/Stats									
GMRA DEUCES 2222			%IMF	4.24		LBS	Ratio						
LASO DEUCES T69B 1697298			RATIO	89	Act. BW	88	111						
LASO TOWKANA XC124T			REA	11.7	Adj. WW	648	99						
5L MTN TRADER 2173-7377			RATIO	93	Adj. YW	1043	96						
LASO MISSY S22B 1697369			MPPA	96	ADG	2.46	92						
LASO MISSY DR142S					WDA	2.74	96						
CE SCORE	HB 169	65 %	GM 48	75 %									
GROWTH TRAITS			MATERNAL TRAITS				CARCASS TRAITS						
CED	BW	WW	YW	MILK	ME	HPG	CEM	STAY	MARB	YG	CW	REA	FAT
10	0.4	53	84	27	2	11	5	17	0.5	0.15	22	0.04	0.04
85 %	84 %	72 %	69 %	26 %	74 %	52 %	84 %	36 %	25 %	80 %	27 %	36 %	90 %

Lot
128

LASO BLACKSMITH Z124E

BD 2/27/17	LASO Z124E	#3785633	100% AR /CAT. 2	Performance/Stats									
5L DEFENDER 560-30Z			%IMF	5.41	LBS	Ratio							
5L DEFENDER 2263-45C 3483495			RATIO	118	Act. BW	85	106						
5L HAZEL 2159-2263			REA	14.3	Adj. WW	695	107						
5L REFEREE 77-350W			RATIO	110	Adj. YW	1091	102						
LASO BLACK JACK U100Z 1548465			MPPA	106.92	ADG	2.47	94						
LASO BLACKJACK BA44T					WDA	2.94	101						
CE SCORE	HB 159	79 %	GM 51	14 %									
GROWTH TRAITS			MATERNAL TRAITS				CARCASS TRAITS						
CED	BW	WW	YW	MILK	ME	HPG	CEM	STAY	MARB	YG	CW	REA	FAT
12	-0.8	58	92	27	-1	8	6	14	0.76	0.04	8	0.11	0.03
53 %	62 %	48 %	49 %	23 %	42 %	89 %	62 %	80 %	2 %	17 %	86 %	23 %	73 %



LASO blacksmith Z124E, Reg. # 3785625

Lot
129

LASO HONDO B20E

BD 12/26/16	LASO B20E	#3785697	100% AR /CAT. 2	Performance/Stats									
GMRA DEUCES 2222			%IMF	5.31	LBS	Ratio							
LASO DEUCES T69B 1697298			RATIO	112	Act. BW	85	107						
LASO TOWKANA XC124T			REA	12.48	Adj. WW	648	99						
C-BAR ELDORADO 114Z			RATIO	99	Adj. YW	1079	100						
LASO DORY JIBA X11B 1697349			MPPA	98	ADG	2.68	101						
LASO DORY JIBA BC86X					WDA	2.82	99						
CE SCORE	HB 161	76 %	GM 51	10 %									
GROWTH TRAITS			MATERNAL TRAITS				CARCASS TRAITS						
CED	BW	WW	YW	MILK	ME	HPG	CEM	STAY	MARB	YG	CW	REA	FAT
11	-0.1	57	96	26	3	12	5	14	0.66	0.13	26	0.13	0.04
72 %	76 %	55 %	37 %	36 %	77 %	33 %	79 %	80 %	6 %	68 %	16 %	20 %	87 %



LASO Hondo B20E, Reg. # 3785697

Lot
130

LASO ELDORADO C94E

BD 1/1/17	LASO C94E	#3785731	98.3% AR /CAT. B	Performance/Stats									
C-BAR ANTICIPATION 101W			%IMF	5.86	LBS	Ratio							
C-BAR ELDORADO 114Z 1551454			RATIO	119	Act. BW	85	111						
C-BAR STONY W914			REA	11.48	Adj. WW	521	82						
LOOSLI RIGHT KIND 112			RATIO	93	Adj. YW	936	91						
LASO OSO U141C 3481034			MPPA	89.71	ADG	2.58	103						
LASO OSO S10U					WDA	2.4	92						
CE SCORE	HB 155	83 %	GM 52	7 %									
GROWTH TRAITS			MATERNAL TRAITS				CARCASS TRAITS						
CED	BW	WW	YW	MILK	ME	HPG	CEM	STAY	MARB	YG	CW	REA	FAT
12	0.3	57	91	19	1	13	6	12	0.72	0.11	13	-0.09	0.03
59 %	83 %	53 %	52 %	94 %	62 %	12 %	72 %	91 %	3 %	57 %	70 %	70 %	54 %



LASO Eldorado C94E, Reg. # 3785731 - Category 1B

Coming 2 Year-Old Bulls



LASO Jurisdiction B6E, Reg. # 3785681

Lot 131 LASO JURISDICTION B6E													
BD 3/2/17	LASO B6E #3785681			100% AR /CAT. A				Performance/Stats					
BECKTON JULIAN GG B571				%IMF	4.67			LBS	Ratio				
HXC JUSTICE 4017B 1719138				RATIO	90	Act. BW		55	72				
HXC JAYLO LB136				REA	12.35	Adj. WW		551	87				
C-BAR ELDORADO 114Z				RATIO	101	Adj. YW		948	94				
LASO LEANNA X40B 1697312				MPPA	90.74	ADG		2.47	104				
LASO LEANNA BC114R						WDA		2.57	97				
CE SCORE	HB 195	20 %	GM 51	13 %									
GROWTH TRAITS				MATERNAL TRAITS				CARCASS TRAITS					
CED	BW	WW	YW	MILK	ME	HPG	CEM	STAY	MARB	YG	CW	REA	FAT
18	-4.9	55	89	23	0	13	9	16	0.67	0.11	15	-0.04	0.03
2 %	3 %	61 %	58 %	65 %	54 %	19 %	14 %	62 %	6 %	53 %	56 %	57 %	54 %



LASO Jury Duty Z125E, Reg. # 3785639

Lot 132 LASO JURY DUTY Z125E													
BD 2/10/17	LASO Z125E #3785639			100% AR /CAT. A				Performance/Stats					
5L NIGHT WATCH 203-04T				%IMF	5.11			LBS	Ratio				
5L NIGHTWATCH 6120-454Z 1549719				RATIO	111	Act. BW		85	106				
5L SUNBURST 2705-6120				REA	10.63	Adj. WW		628	96				
5L REFEREE 77-350W				RATIO	81	Adj. YW		1023	95				
LASO MISS JR U106Z 1548475				MPPA	100	ADG		2.46	94				
LASO MISS JR BC116U						WDA		2.79	96				
CE SCORE	HB 188	31 %	GM 48	75 %									
GROWTH TRAITS				MATERNAL TRAITS				CARCASS TRAITS					
CED	BW	WW	YW	MILK	ME	HPG	CEM	STAY	MARB	YG	CW	REA	FAT
15	-2.8	44	70	28	1	9	6	19	0.55	0.19	18	-0.18	0.04
20 %	21 %	93 %	92 %	16 %	62 %	83 %	62 %	17 %	17 %	93 %	43 %	88 %	81 %



LASO Easy Rider C111E, Reg. # 3785759

Lot 133 LASO EASY RIDER C111E													
BD 1/16/17	LASO C111E #3785759			100% AR /CAT. A				Performance/Stats					
C-BAR ELDORADO 114Z				%IMF	4.37			LBS	Ratio				
LASO LOW RIDER BE184C 3481152				RATIO	89	Act. BW		85	111				
LASO LEANNA BC114R				REA	11.92	Adj. WW		563	89				
BROWN ALLIANCE X7795				RATIO	97	Adj. YW		898	87				
LASO LANA A181C 3481100				MPPA	97.14	ADG		2.08	83				
LASO LANA U102A						WDA		2.27	87				
CE SCORE	HB 181	44 %	GM 49	45 %									
GROWTH TRAITS				MATERNAL TRAITS				CARCASS TRAITS					
CED	BW	WW	YW	MILK	ME	HPG	CEM	STAY	MARB	YG	CW	REA	FAT
13	-0.6	55	87	23	-2	13	7	16	0.59	0.12	11	-0.17	0.02
44 %	66 %	62 %	63 %	65 %	35 %	19 %	50 %	52 %	12 %	65 %	75 %	87 %	44 %

Lot
134

LASO NIGHT SHIFT C68E

BD 2/26/17	LASO C68E	#3804380	100% AR /CAT. A	Performance/Stats									
5L NIGHTWATCH 6120-454Z			%IMF		LBS	Ratio							
LASO NIGHT SHIFT W184C 3481108			RATIO		Act. BW	60	83						
LASO LOVITT T70W			REA		Adj. WW	639	101						
C-BAR ELDORADO 114Z			RATIO		Adj. YW	987	97						
LASO DORY JIBA Z121C 3481061			MPPA	100.4	ADG	2.16	91						
LASO DORY JIBA BE170XU					WDA	2.48	93						
CE SCORE	HB 150	87 %			GM 49	51 %							
GROWTH TRAITS			MATERNAL TRAITS				CARCASS TRAITS						
CED	BW	WW	YW	MILK	ME	HPG	CEM	STAY	MARB	YG	CW	REA	FAT
17	-4.9	47	78	29	2	12	8	12	0.59	0.11	14	-0.04	0.03
6 %	3 %	88 %	82 %	7 %	68 %	31 %	22 %	93 %	12 %	57 %	62 %	57 %	68 %



LASO Night Shift C68E, Reg. #380438

Lot
135

LASO NIGHT SHIFT C69E

BD 2/14/17	LASO C69E	#3804388	100% AR /CAT. A	Performance/Stats									
5L NIGHTWATCH 6120-454Z			%IMF		LBS	Ratio							
LASO NIGHT SHIFT W184C 3481108			RATIO		Act. BW	62	87						
LASO LOVITT T70W			REA		Adj. WW	668	106						
C-BAR ELDORADO 114Z			RATIO		Adj. YW	988	96						
LASO DORY JIBA U119C 3481139			MPPA	103.43	ADG	1.98	79						
LASO DORY JIBA BE170XU					WDA	2.42	92						
CE SCORE	HB 155	83 %			GM 48	64 %							
GROWTH TRAITS			MATERNAL TRAITS				CARCASS TRAITS						
CED	BW	WW	YW	MILK	ME	HPG	CEM	STAY	MARB	YG	CW	REA	FAT
17	-4.9	47	76	30	2	12	8	13	0.57	0.1	14	-0.02	0.03
6 %	3 %	88 %	85 %	5 %	68 %	31 %	20 %	89 %	15 %	50 %	63 %	51 %	62 %



LASO Night Shift C69E, Reg. # 3804388

Lot
136

LASO OUT RIDER A202E

BD 1/28/17	LASO A202E	#3785653	100% AR /CAT. A	Performance/Stats									
C-BAR ELDORADO 114Z			%IMF	4.09	LBS	Ratio							
LASO LOW RIDER BE184C 3481152			RATIO	89	Act. BW	84	107						
LASO LEANNA BC114R			REA	11.32	Adj. WW	528	81						
5L ADVOCATE 817-14W			RATIO	87	Adj. YW	937	87						
5L PEARLY 1938-3753 1620206			MPPA	92	ADG	2.55	97						
5L PEARLY 1082-1938					WDA	2.57	88						
CE SCORE	HB 168	67 %			GM 49	58 %							
GROWTH TRAITS			MATERNAL TRAITS				CARCASS TRAITS						
CED	BW	WW	YW	MILK	ME	HPG	CEM	STAY	MARB	YG	CW	REA	FAT
14	-2.4	43	70	27	1	9	6	16	0.7	0.2	12	-0.26	0.04
30 %	28 %	95 %	92 %	27 %	66 %	71 %	72 %	57 %	4 %	95 %	73 %	96 %	88 %



LASO Out Rider A202E, Reg. # 3785653

Coming 2 Year-Old Bulls



LASO Adjuster B8E, Reg. # 3785695

Lot 137		LASO ADJUSTER B8E													
BD	2/2/17	LASO B8E	#3785695	100% AR /CAT. A						Performance/Stats					
		5L BONFIRE 1715-126X		%IMF	3.99		LBS	Ratio							
		5L ADJUSTER 1027-624Z	1549237	RATIO	77	Act. BW	84	110							
		5L HAZEL 1365-1027		REA	11.7	Adj. WW	576	91							
		C-BAR ELDORADO 114Z		RATIO	95	Adj. YW	954	94							
		LASO DYNO GE193B	1697343	MPPA	92.57	ADG	2.35	99							
		LASO PATSY DR152R				WDA	2.53	95							
CE SCORE		HB 149	87 %	GM 46	93 %										
GROWTH TRAITS				MATERNAL TRAITS						CARCASS TRAITS					
CED	BW	WW	YW	MILK	ME	HPG	CEM	STAY	MARB	YG	CW	REA	FAT		
13	-1.9	50	78	22	3	12	6	14	0.48	0.17	12	-0.23	0.03		
41 %	38 %	83 %	81 %	73 %	80 %	24 %	62 %	81 %	28 %	88 %	74 %	94 %	73 %		



LASO Adjuster B53E, Reg. # 3785725

Lot 138		LASO ADJUSTER B53E													
BD	3/18/17	LASO B53E	#3785725	100% AR /CAT. A						Performance/Stats					
		5L BONFIRE 1715-126X		%IMF	4.74		LBS	Ratio							
		5L ADJUSTER 1027-624Z	1549237	RATIO	103	Act. BW	80	101							
		5L HAZEL 1365-1027		REA	13.11	Adj. WW	712	97							
		5L ADVANTAGE 3267-221Y		RATIO	103	Adj. YW	1109	97							
		JACOBSON LAKOTA 4146	1732134	MPPA	101.33	ADG	2.47	96							
		5L LAKOTA 41C-813				WDA	2.9	99							
CE SCORE		HB 155	83 %	GM 48	80 %										
GROWTH TRAITS				MATERNAL TRAITS						CARCASS TRAITS					
CED	BW	WW	YW	MILK	ME	HPG	CEM	STAY	MARB	YG	CW	REA	FAT		
13	-1.9	55	82	24	-1	10	7	14	0.51	0.1	14	-0.02	0.03		
36 %	38 %	64 %	75 %	53 %	38 %	69 %	38 %	80 %	23 %	49 %	64 %	51 %	62 %		



LASO Jigger A198E, Reg. # 3785663

Lot 139		LASO JIGGER A198E													
BD	2/22/17	LASO A198E	#3785663	100% AR /CAT. A						Performance/Stats					
		5L NIGHT WATCH 203-04T		%IMF	4.84		LBS	Ratio							
		5L NIGHTWATCH 6120-454Z	1549719	RATIO	94	Act. BW	90	109							
		5L SUNBURST 2705-6120		REA	12.92	Adj. WW	709	95							
		MESSMER PACKER S008		RATIO	90	Adj. YW	1098	93							
		LASO MARJIE Y82A	1628657	MPPA	97.14	ADG	2.42	90							
		LASO MARJIE W164Y				WDA	2.92	93							
CE SCORE		HB 183	40 %	GM 48	79 %										
GROWTH TRAITS				MATERNAL TRAITS						CARCASS TRAITS					
CED	BW	WW	YW	MILK	ME	HPG	CEM	STAY	MARB	YG	CW	REA	FAT		
14	-3.6	47	74	28	2	9	8	18	0.5	0.13	20	0.16	0.05		
32 %	11 %	90 %	87 %	15 %	68 %	80 %	33 %	25 %	25 %	67 %	36 %	15 %	97 %		

Lot
140

LASO NIGHT SHIFT C65E

BD 1/15/17	LASO C65E	#3804382	100% AR /CAT. A	Performance/Stats									
5L NIGHTWATCH 6120-454Z			%IMF	4.73	LBS	Ratio							
LASO NIGHT SHIFT W184C 3481108			RATIO	98	Act. BW	77	105						
LASO LOVITT T70W			REA	12.11	Adj. WW	636	101						
C-BAR ELDORADO 114Z			RATIO	99	Adj. YW	1040	101						
LASO DORY JIBA W156C 3481065			MPPA	100	ADG	2.52	100						
LASO DORY JIBA BE170XU					WDA	2.65	101						
CE SCORE	HB 157	81 %	GM 50	29 %									
GROWTH TRAITS			MATERNAL TRAITS				CARCASS TRAITS						
CED	BW	WW	YW	MILK	ME	HPG	CEM	STAY	MARB	YG	CW	REA	FAT
15	-2.8	52	86	29	1	12	7	13	0.54	0.08	10	0	0.03
16 %	21 %	75 %	65 %	11 %	67 %	31 %	36 %	89 %	18 %	34 %	81 %	46 %	62 %



LASO Night Shift: C65E, Reg. # 3804382

Lot
141

LASO TRAIL BLAZER Z135E

BD 1/7/17	LASO Z135E	#3785641	100% AR /CAT. A	Performance/Stats									
C-BAR ELDORADO 114Z			%IMF	4.42	LBS	Ratio							
LASO BRAVADO W177B 1697305			RATIO	96	Act. BW	88	111						
LASO LEANNA BC114R			REA	12.48	Adj. WW	695	107						
5L MTN TRADER 2173-7377			RATIO	96	Adj. YW	1062	99						
LASO DORY JIBA W176Z 1548491			MPPA	99.23	ADG	2.29	87						
LASO DORY JIBA BD143W					WDA	2.83	97						
CE SCORE	HB 168	66 %	GM 51	21 %									
GROWTH TRAITS			MATERNAL TRAITS				CARCASS TRAITS						
CED	BW	WW	YW	MILK	ME	HPG	CEM	STAY	MARB	YG	CW	REA	FAT
13	-0.7	61	98	26	1	12	6	14	0.52	0.12	26	0.06	0.03
39 %	64 %	33 %	32 %	33 %	63 %	27 %	64 %	78 %	21 %	61 %	15 %	32 %	57 %



LASO Trail Blazer: Z135E, Reg. # 3785641



RANCHER PROFILES

Digital Marketing - Graphic Design
Websites/Social Media - Photography
Videography - Advertising
Sale Management - Event Planning

Katrina Lautenschlager
Owner/Operator

Rancher Profiles
rancherprofiles.com

katrina@rancherprofiles.com
509-592-7664



RANCHER'S CHOICE BULL SALE



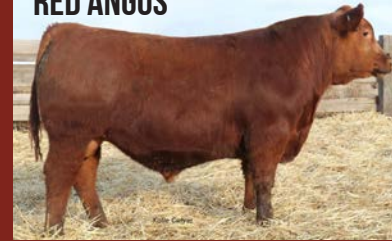
PICK YOUR BREED.

PICK YOUR HERD BULL.

CHAROLAIS



RED ANGUS



BLACK ANGUS



OR COME

PICK A HEIFER.

FEBRUARY 23, 2019

BONINA SALE FACILITY | ELTOPIA, WA

RANCHERSCHOICESALE.COM



Alan & Leslie Alexander
Hang'n A Cattle Co.
509-727-9151
hangnacattle.com



Carl & Jodi Lautenschlager
Lautenschlager & Sons
509-657-3301
lasoredangus.com



Pat & Ada Gardiner
Gardiner Prime Angus
208-267-3194
gardinerprimeangus.com

WOOD V BAR X RANCH

RED ANGUS

2019 Annual Bull Sale

Friday, March 22, 2019

At the Ranch • Sandpoint, ID



"High maternal cows with the ability to utilize various forage types under all environmental conditions results in the production of low maintenance heifers and high performing bulls."

Leonard Wood
208.290.7782

Office: 208.263.5246
481649 Hwy 95 Sandpoint, Idaho 83864
haywoodcattle@gmail.com • woodvbarxranch.com

Ben Wood
208.255.6025

*contact us to get on our mailing list

LAUTENSCHLAGER & SONS

1251 CUTLER - LAUTENSCHLAGER RD.
ENDICOTT, WA 99125

PRESORTED
FIRST-CLASS MAIL
U.S. POSTAGE PAID
LivestockDirect
66030

- **Open Heifer calves**
- **Spring Calving Registered and Commercial Bred Heifers**
- **Coming 2 Year-Old Bulls**
- **Proven Donors**
- **Donor Prospects**
- **Pregnant Recips**

