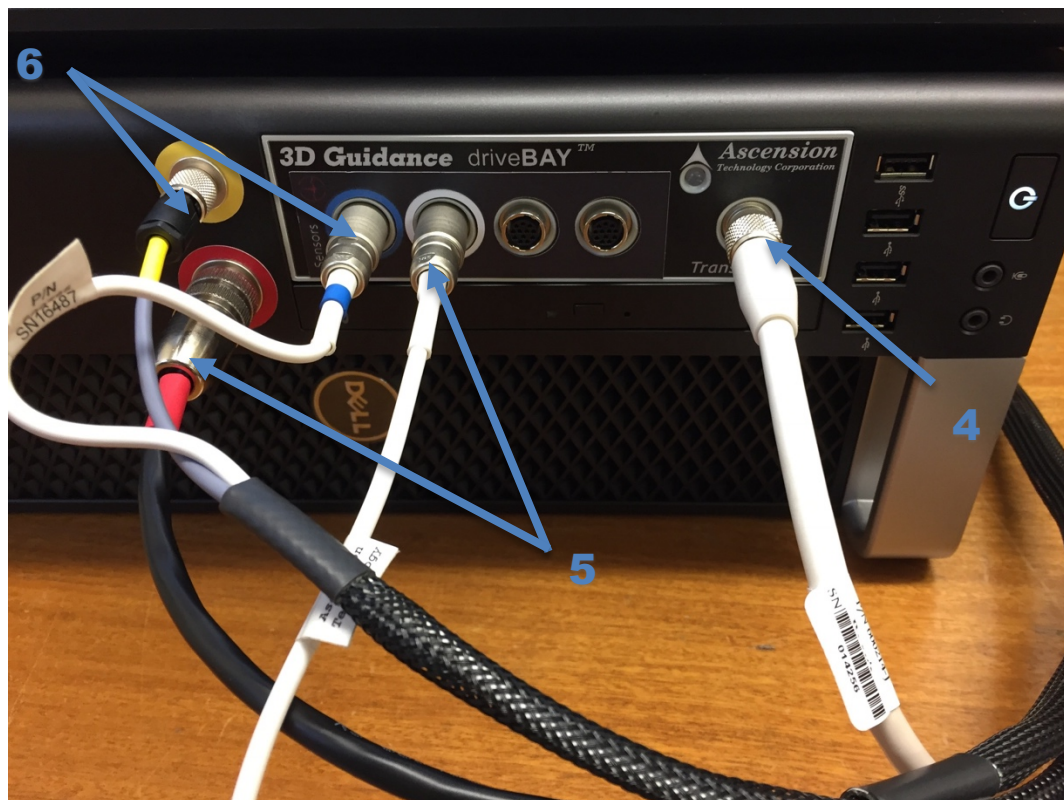
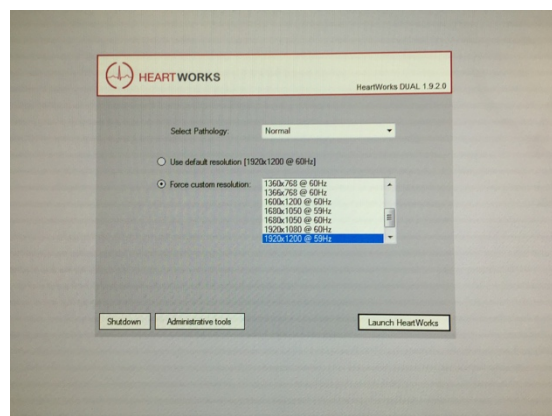


## HeartWorks Quick Start Guide

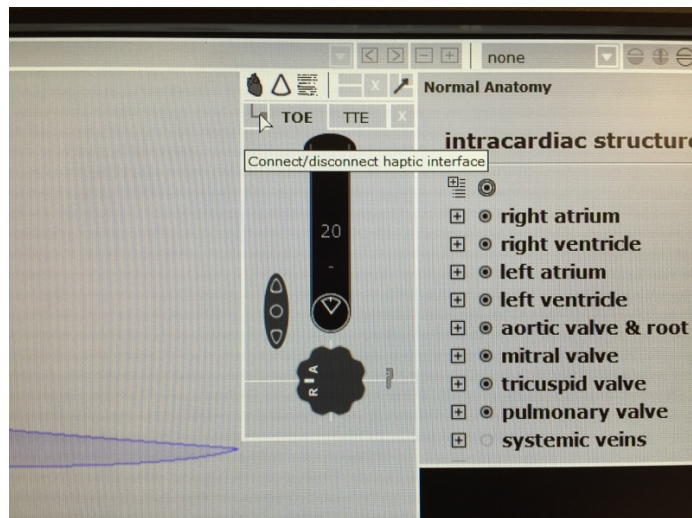
1. Do not connect to mains power until all connections have been made
2. Talc is only for use with the TTE probe
3. Assemble PC
  - a. Connect monitor (back of PC)
  - b. Connect mouse and keyboard via USB (back of PC)
4. Connect manikin to front of PC – fat white cable into right hand port
5. Connect TOE probe to front of PC – red plug into red port, white plug into left hand white port
6. Connect TTE probe to front of PC – yellow plug in yellow port, blue plug in blue port



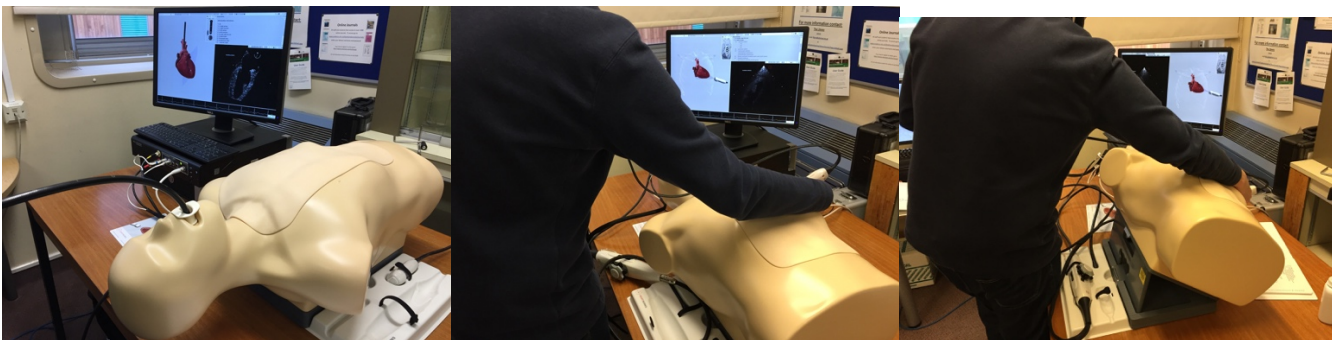
7. Connect to mains power
8. Turn on PC and monitor
9. Accept T and Cs
10. Select pathology and resolution



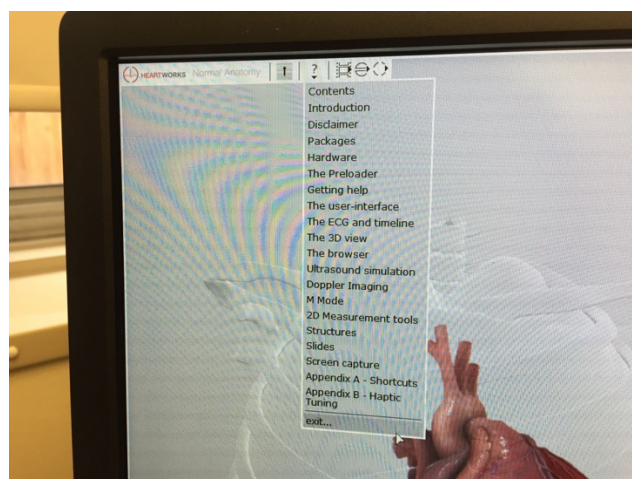
11. Select probe, push button by cursor to connect / activate:



12. Suggested positioning for TOE and TTE:



13. To change the pathology / end session:



Contact: Matt Bell or Kieran Oglesby for further advice  
[oneheartcourse@gmail.com](mailto:oneheartcourse@gmail.com)