

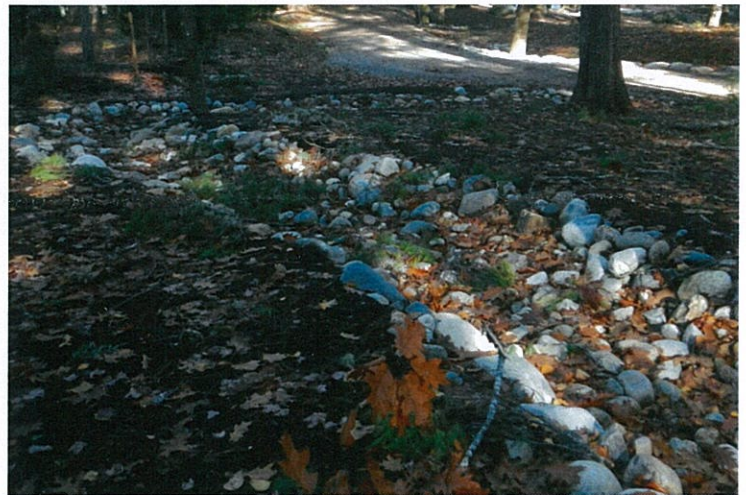
# PROJECT SPOTLIGHT

## ALAMOOSOOK LAKE: SAVE MONEY AND PROTECT YOUR LAKE

The property pictured below experienced the common road maintenance issue of spring washouts. Each year this section of driveway would erode and require costly repairs that amounted to little more than a band-aid until the next big storm.

**The problem** — the slope was over 8% and directly downhill to the lake - which is just out of sight. Buying gravel to fill the washout and re-crown the drive was a regular expense but never fixed the problem.

**The solution** — was two fold: 1.) a longer switch-back drive decreased the slope and allowed the crown to effectively shed water into the ditch, not the tire tracks toward the lake 2.) restoring the too-steep section of driveway by stabilizing with erosion control mulch and redirecting stormwater from up hill in a rock lined ditch towards a forest buffer away from the lake, allowing water to soak into the soils and sediment to be deposited before reaching the lake.



SOIL IS THE #1 POLLUTER OF MAINE LAKES. — PHOTO ZACK STEELE

### WHAT IS NONPOINT SOURCE POLLUTION [WWW.EPA.GOV](http://WWW.EPA.GOV)

Nonpoint Source Pollution (NPS) generally results from land runoff, precipitation, drainage, and seepage. Unlike pollution from industrial and sewage treatment plants, NPS comes from many diffuse sources. NPS pollution is caused by rainfall or snowmelt moving over and through the ground. As the runoff moves, it picks up and carries away natural and human-made pollutants, depositing them into lakes, rivers, wetlands, coastal waters and ground waters.

### NONPOINT SOURCE POLLUTION can include:

- ◆ Excess fertilizers, herbicides, and insecticides from agricultural lands and residential areas
- ◆ Oil, grease & toxic chemicals from urban runoff & energy production
- ◆ Sediment from improperly managed construction sites, crop and forest lands, and eroding streambanks
- ◆ Salt from irrigation practices & acid drainage from abandoned mines
- ◆ Bacteria/nutrients from livestock, pet waste, & faulty septic systems

*\*Funding for this project, in part, was provided by the U.S. Environmental Protection Agency under Section 319(h) of the Clean Water Act. The funding is administered by the Maine Department of Environmental protection in partnership with EPA. EPA does not endorse any commercial products or services mentioned.*