

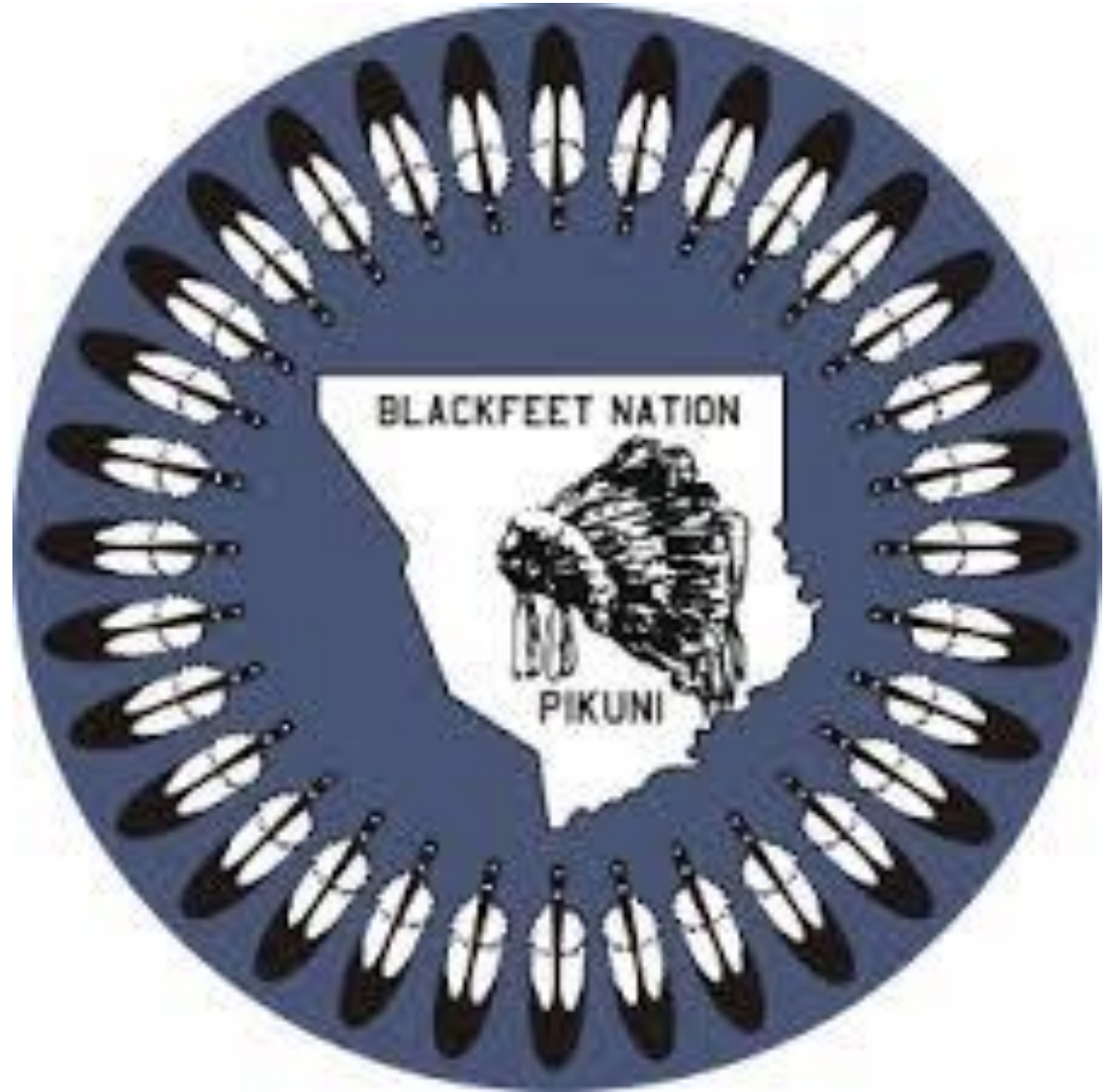
Blackfeet Tribal Transportation Projects

Industry Day

February 18, 2020, 9:00 am

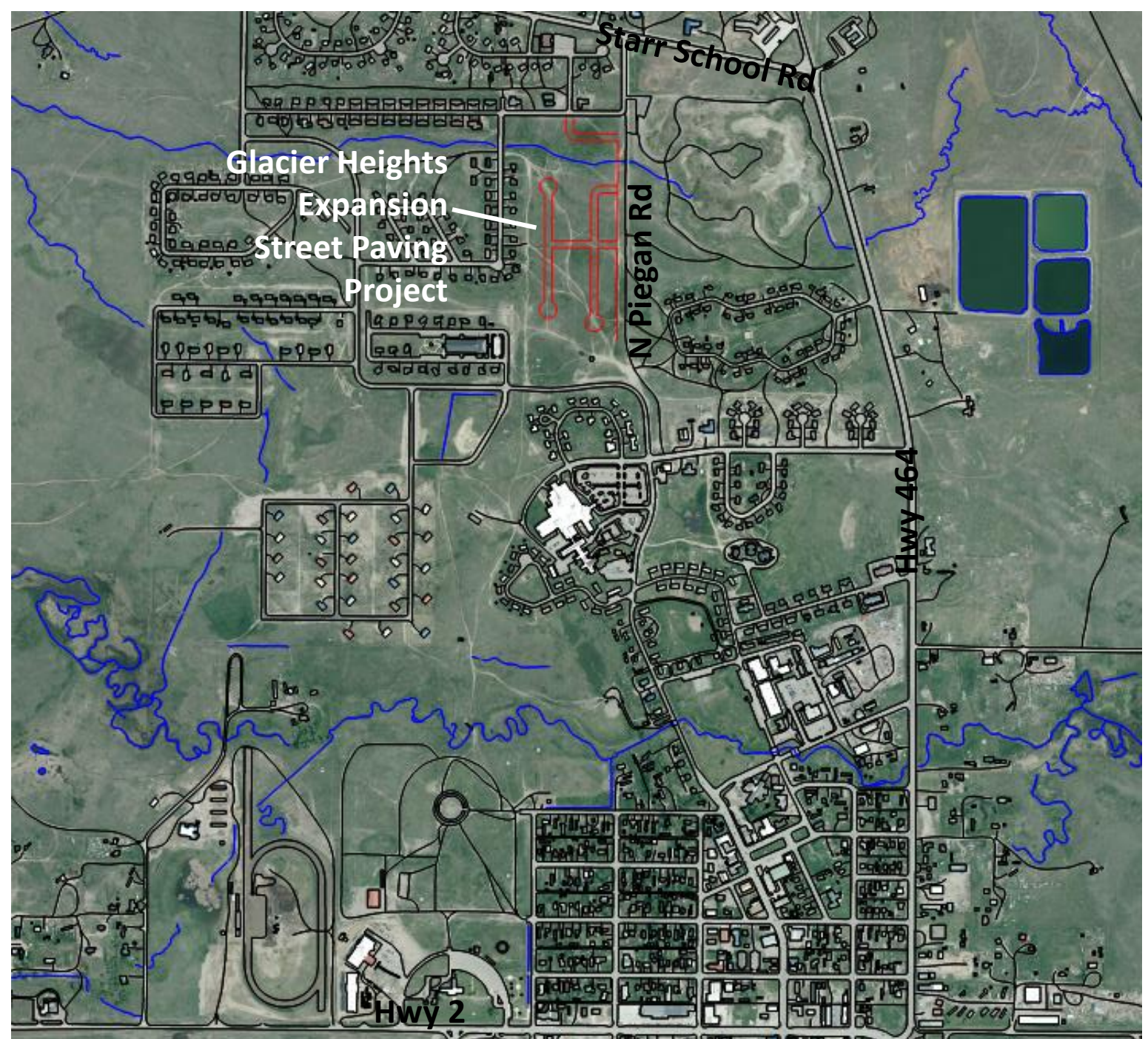
Agenda

- Introductions
- Project Overviews
 - Glacier Heights Expansion Paving
 - Hospital Drive
 - Blevins South Streets
 - Blacktail Bridge
 - Route 1 Slide Rehabilitation
- Bidding and Contracting
- TERO Requirements



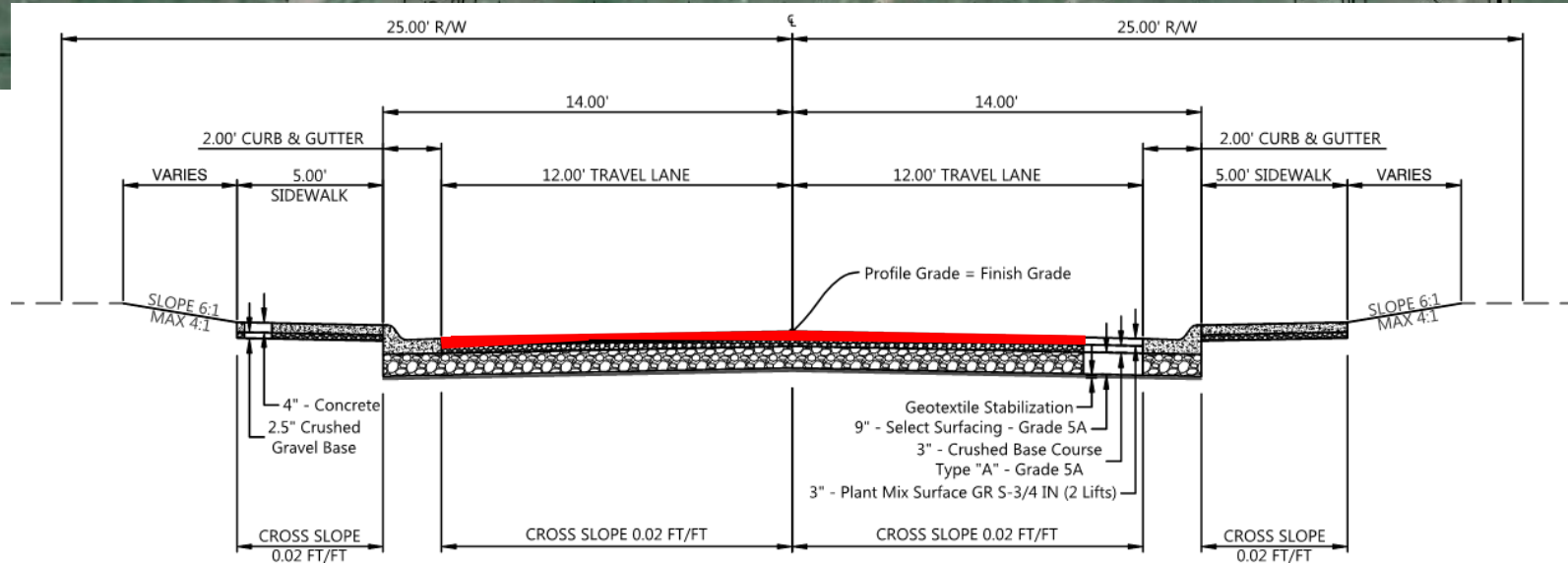
GLACIER HEIGHTS EXPANSION STREET PAVING PROJECT

Glacier Heights Expansion Street Paving Location



Glacier Heights Expansion Street Paving Work Overview

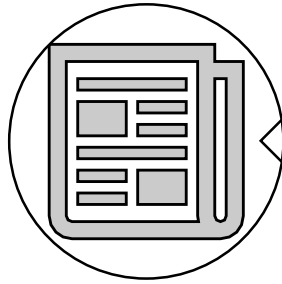
- Scope
 - Fine grade previously placed base course
 - Asphalt paving
 - Utility adjustment
- Estimated Construction Cost Range less than \$1 million



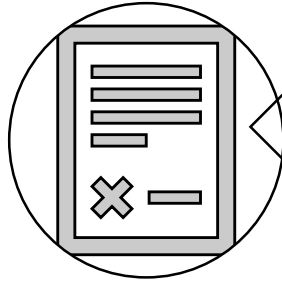
TYPICAL SECTION - RESIDENTIAL ROAD

Glacier Heights
Expansion
Street Paving

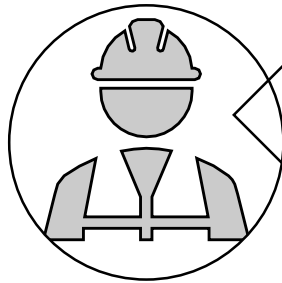
Tentative
Timeframes



April 2020
Advertisement



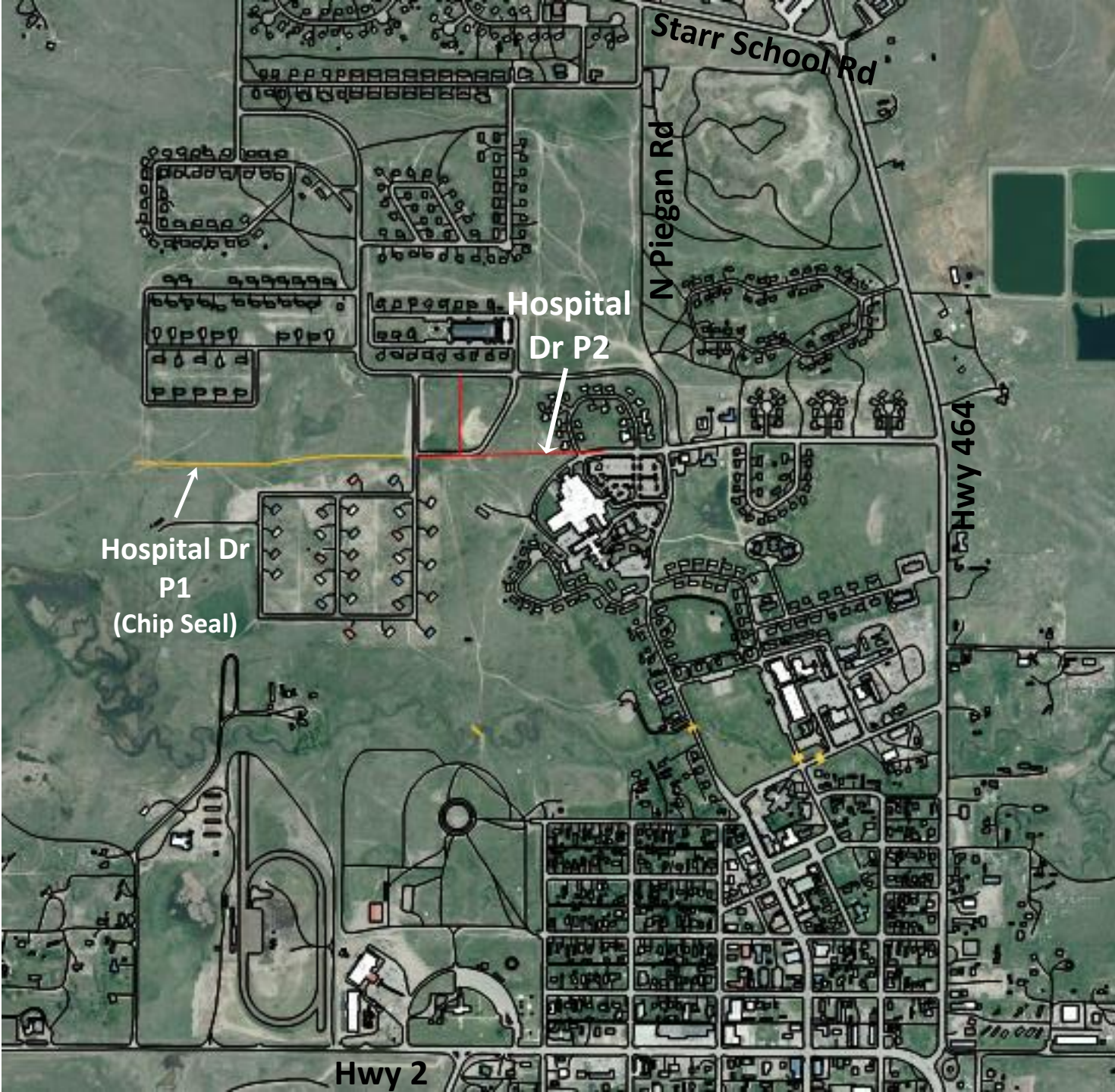
May 2020
Award & Contracting



June –August 2020
Project Construction

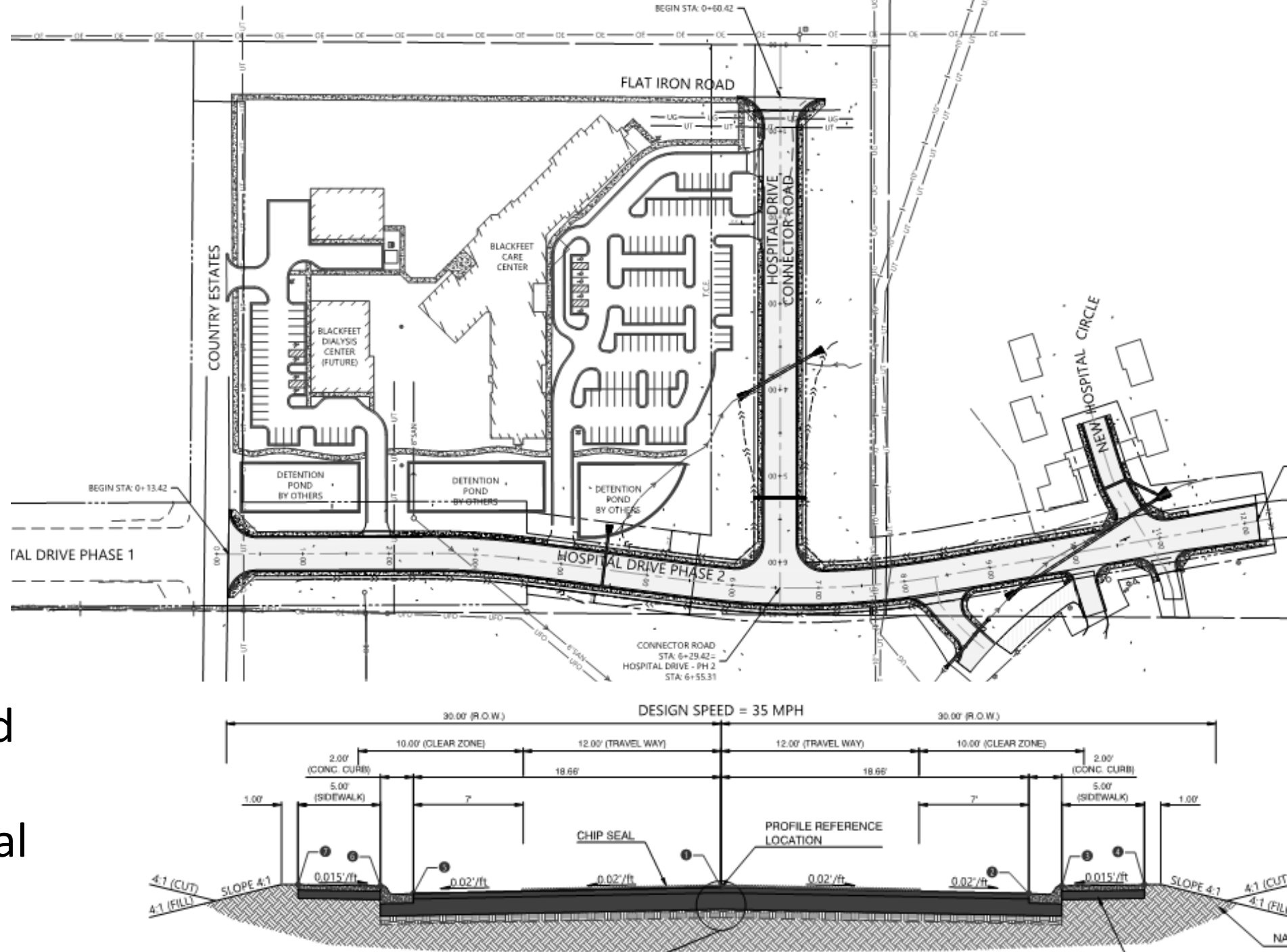
HOSPITAL DRIVE

Hospital
Drive
Location



Hospital Drive Work Overview

- Phase 2 Scope – 0.35 miles new asphalt paved urban section road
- Phase 1 Scope – 0.35 miles chip seal and striping



Hospital Drive

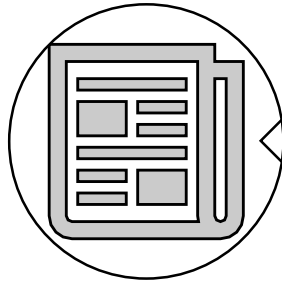
Preliminary Costs and Quantities

Estimated Quantities

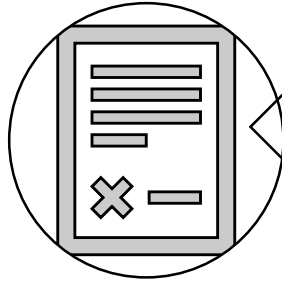
- 4500 CY Excavation
- 2400 CY Embankment
- 900 CY Crushed Base
- 350 TN Asphalt Paving
- 3700 FT Curb, Gutter, Sidewalk
- Storm Drain & Culverts
- Chip Seal & Striping

Estimated Construction Cost Range less than \$1 million

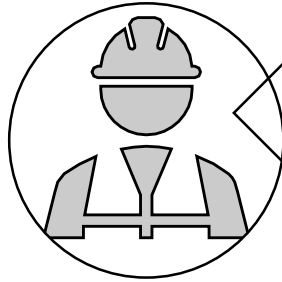
Hospital
Drive
Tentative
Timeframes



April 2020
Advertisement



May – June 2020
Award & Contracting



June – October 2020
Project Construction

BLEVINS SOUTH STREETS

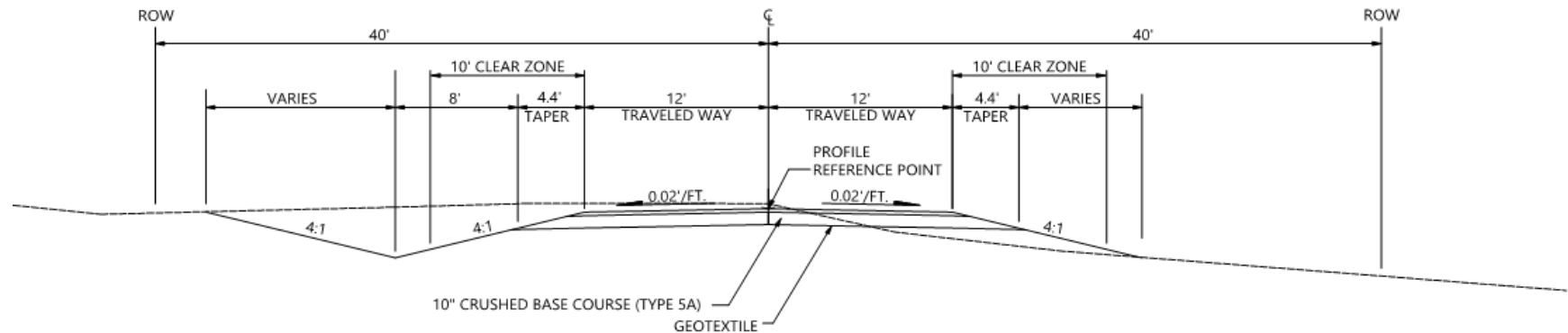
Blevins South Streets Location



Blevins South Streets

Work Overview

- Scope –
Complete
construction of
1.44 miles partially
constructed rural
gravel roads



Blevins South Streets Work Overview

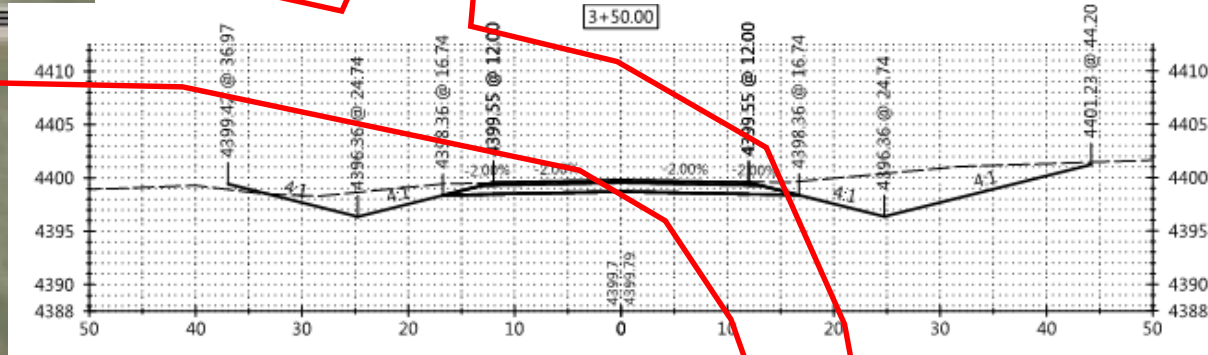


Completed Work

- Road subbase grading
- Geotextile placement
- Partial base course placement

Remaining Work

- Placement of ~4-inches base course on 25% Road A
- Ditch grading
- Driveways and culverts



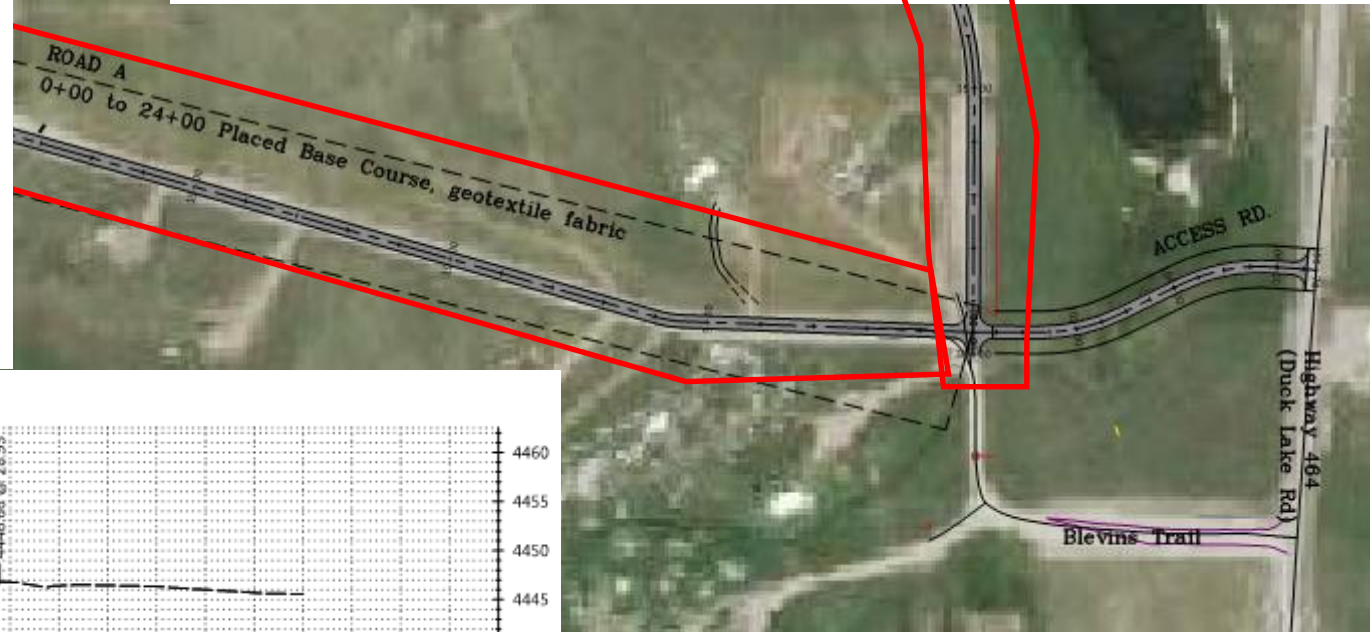
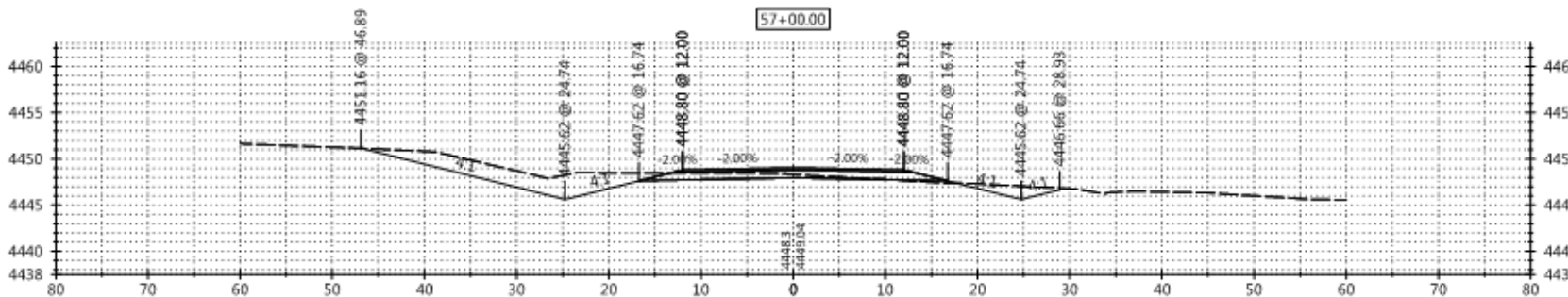
Roads B & D

Completed Work

- Preliminary and partial grading of Road B

Remaining Work

- Placement of 8-inches base course
- Place geotextile
- Ditch and roadbed grading
- Driveways and culverts



Blevins South Streets

Preliminary Costs and Quantities

Estimated Quantities

- Excavation and Embankment of partially completed roads
- ~15,000 SY Geotextile
- ~1700 TN Crushed Base
- Gas Line Concrete Cap
- Culverts (owner furnished)

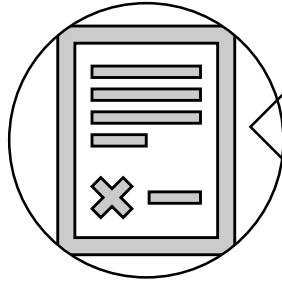
Estimated Construction Cost Range less than \$1 million

Blevins South
Streets

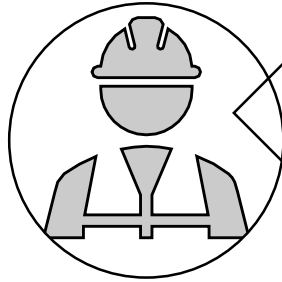
Tentative Timeframes



April 2020
Advertisement



June 2020
Award & Contracting



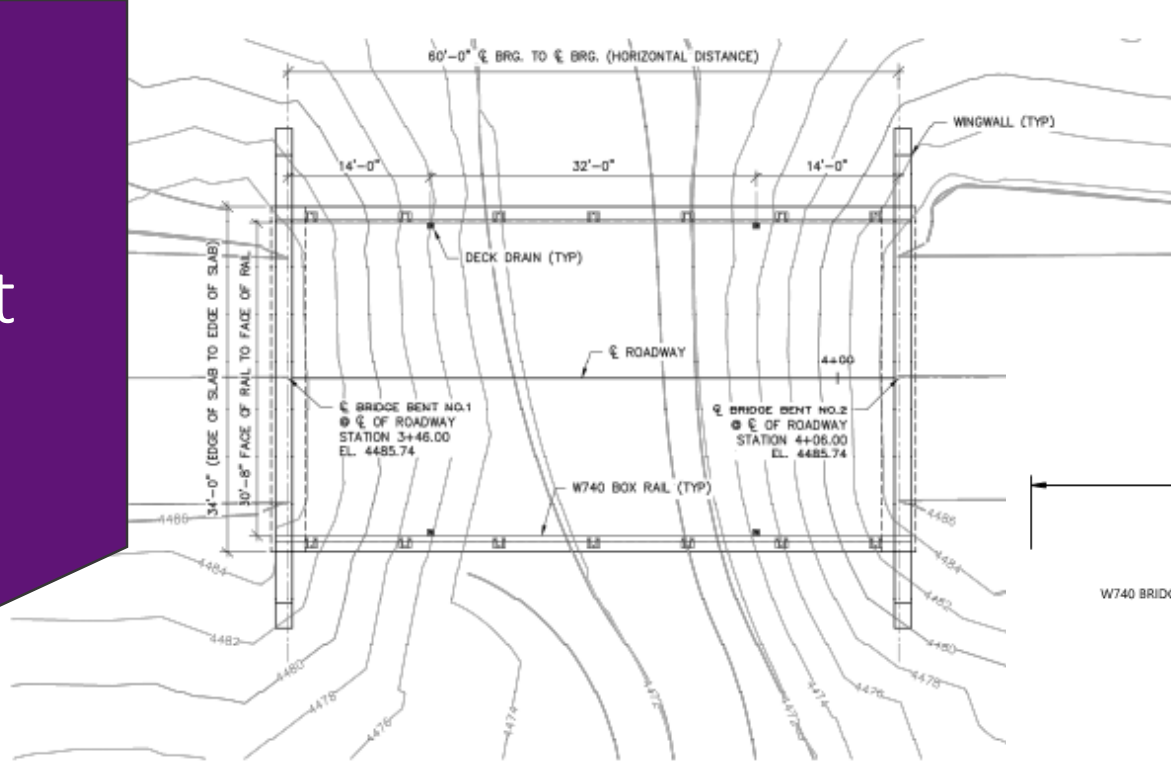
June – September 2020
Project Construction

BLACKTAIL BRIDGE REPLACEMENT

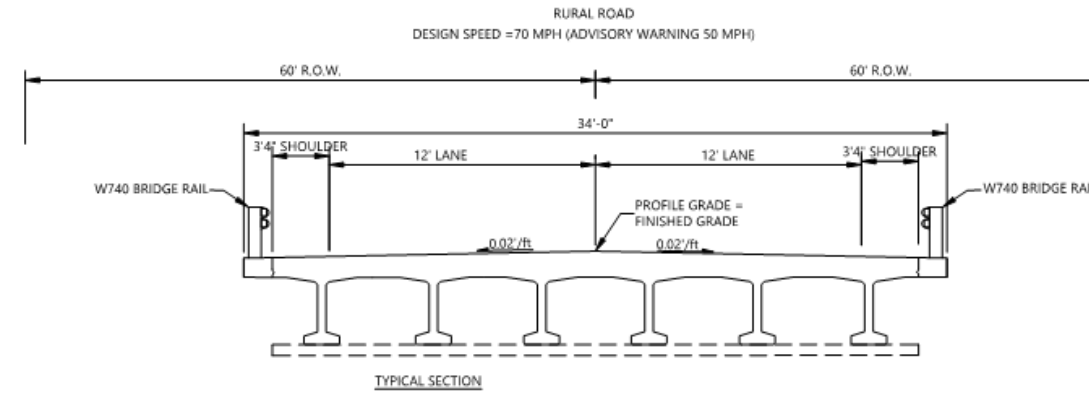
Blacktail Bridge Replacement Location



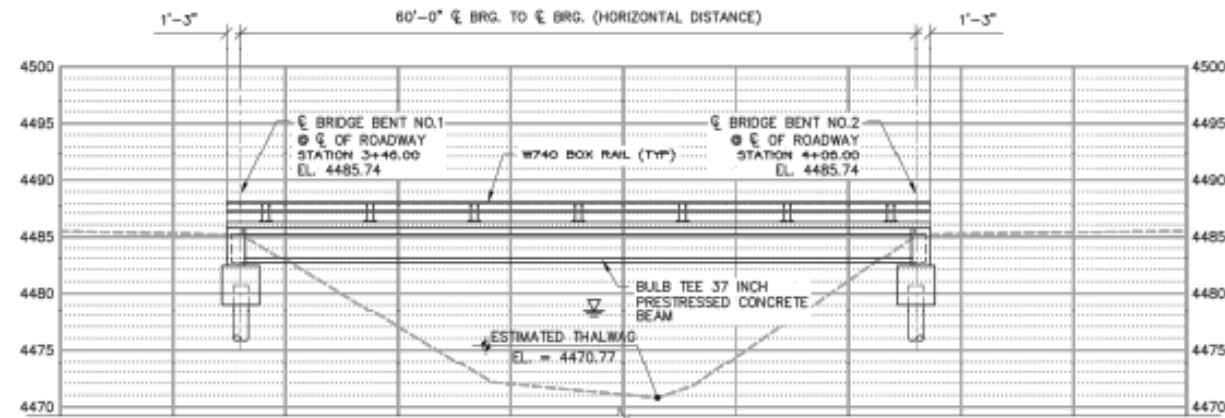
Blacktail Bridge Replacement Work Overview



TYPICAL ROAD SECTION - PROPOSED BRIDGE



TYPICAL ROAD SECTION - PROPOSED PAVEMENT

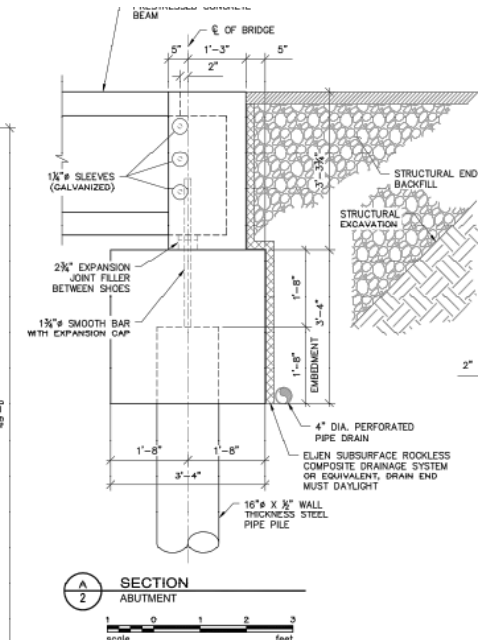
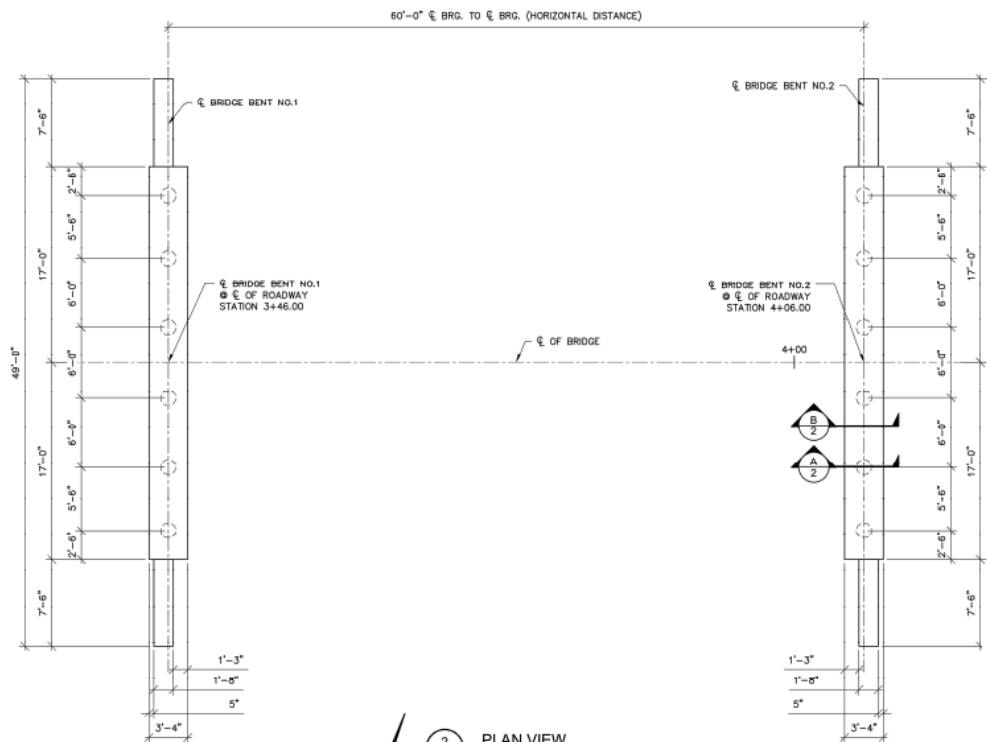
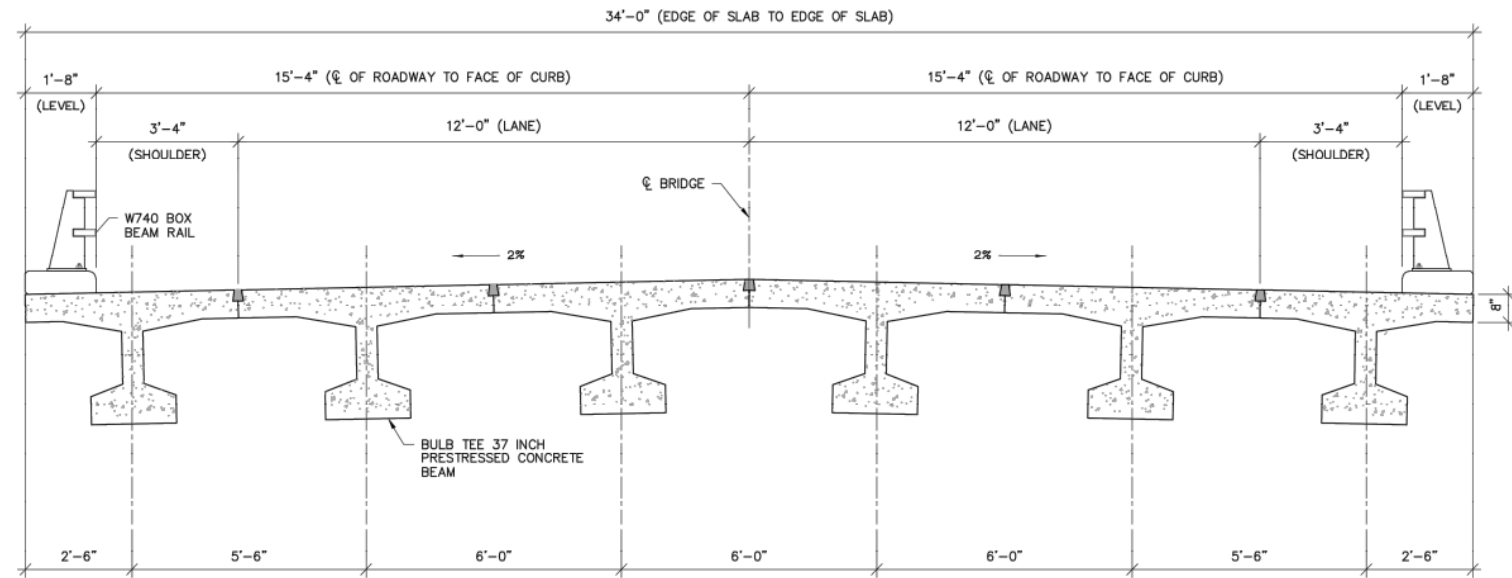


- Scope:
Remove & replace
60' single span
concrete beam
bridge with
approach
reconstruction

Blacktail Bridge Replacement

Bridge Replacement

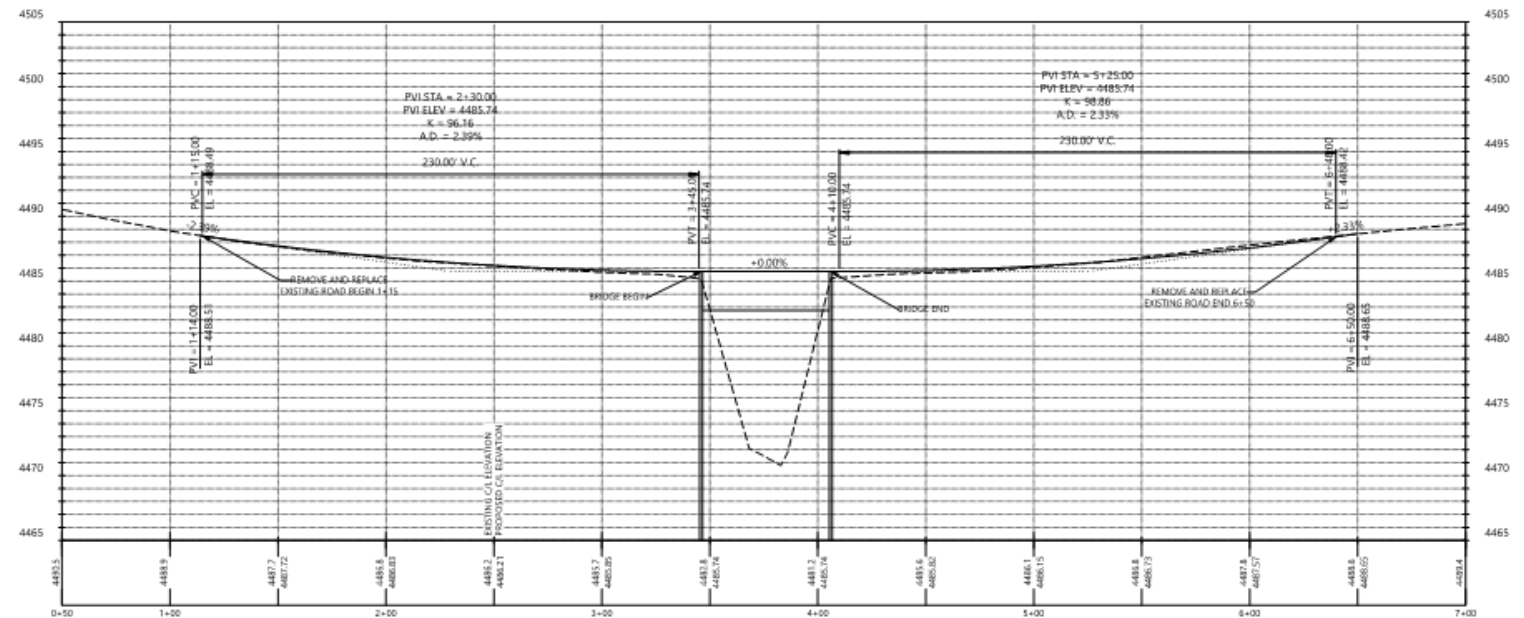
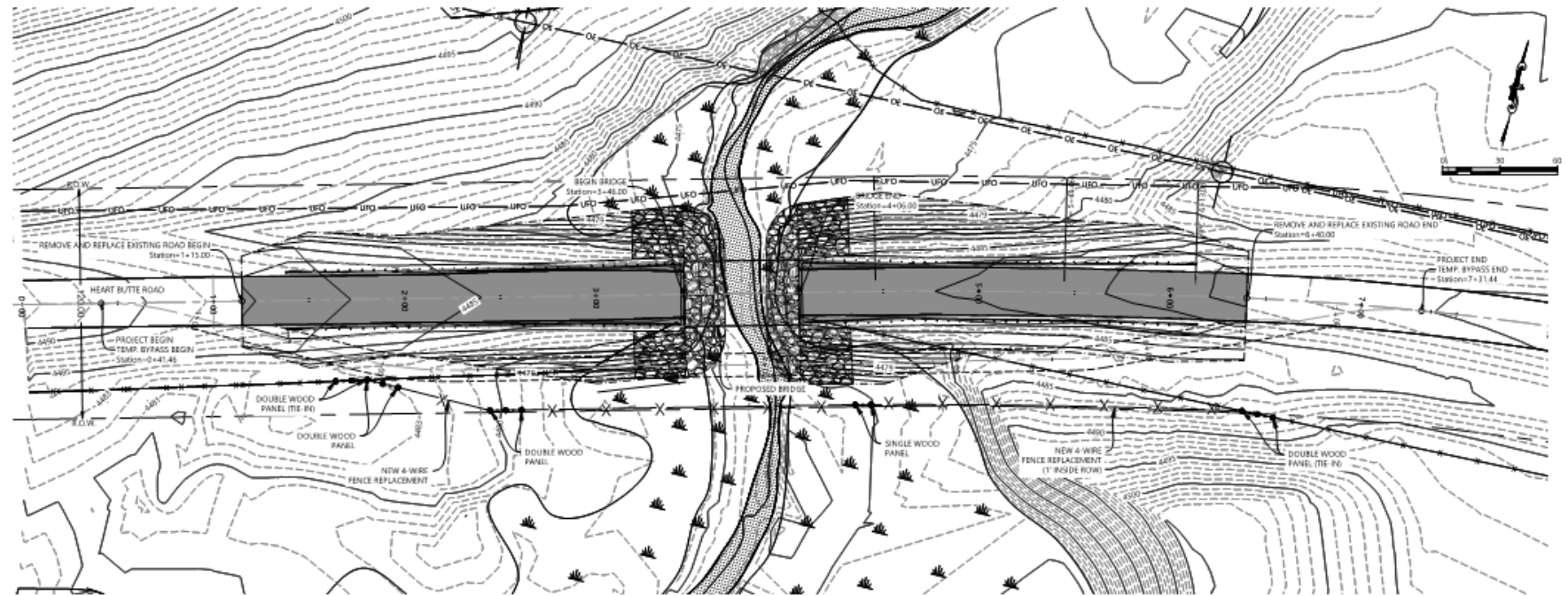
- 16-in steel pipe piles
- Concrete bents and abutments
- 37-in Bulb Tee Prestressed Beams
- W740 Box Beam Bridge Rail



Blacktail Bridge Replacement Approach Reconstruction

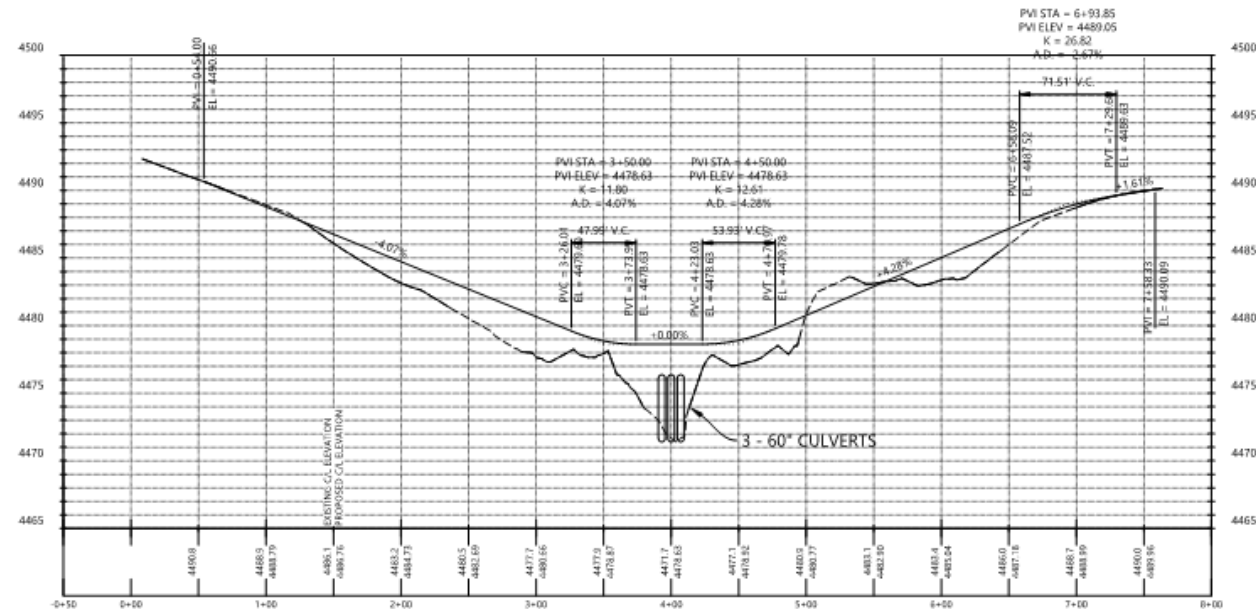
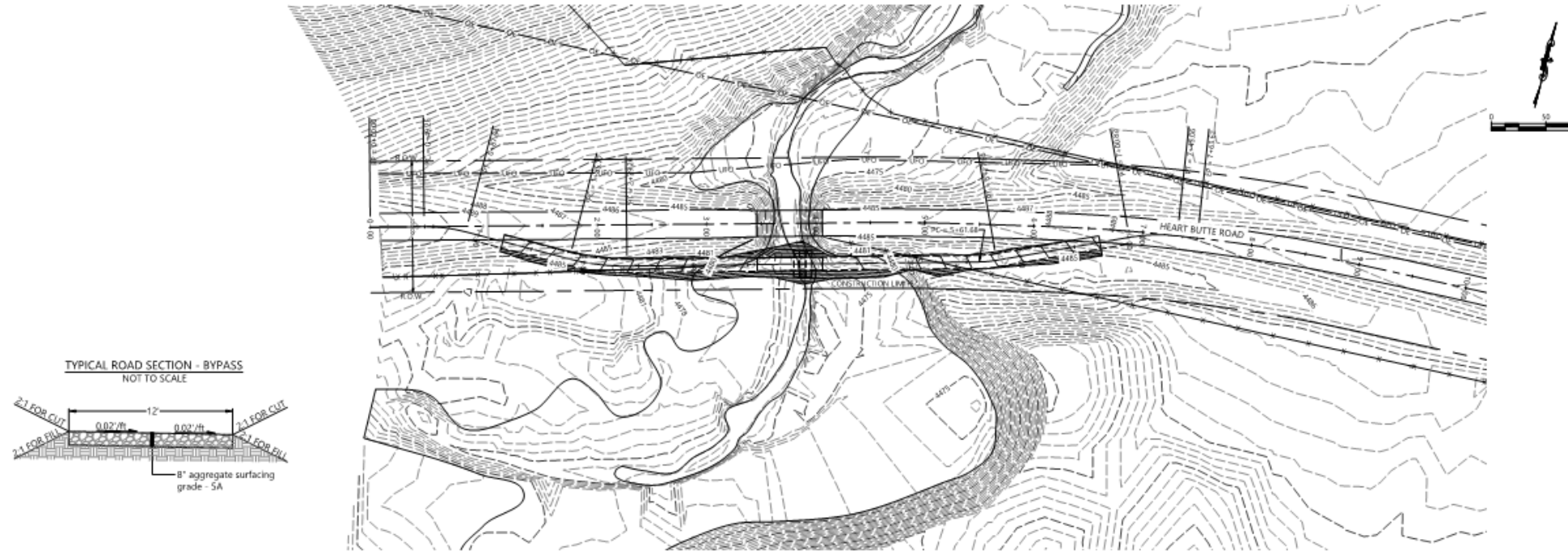
~460 feet asphalt
paved approach
reconstruction and
widening

- Box beam guardrail
- Riprap bank protection



Blacktail Bridge Replacement Temp Detour

- 700 FT Single Lane Temporary Detour
- Signal Controlled
- 3 EA 60-in culverts



Blacktail Bridge Reconstruction

Preliminary Costs and Quantities

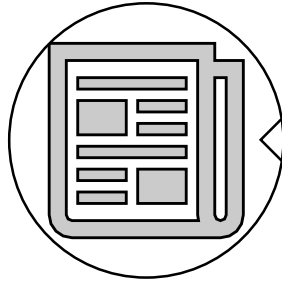
Estimated Quantities

- 65 FT Bridge Demolition
- 700 FT Single Lane Temporary Detour with Signal Control and 3 EA 60 in Culverts
- 400 LF Steel Pipe Pile
- 55 CY Reinforced Structural Concrete
- 130 LF W740 Bridge Rail
- 400 LF Steel Box Beam Guardrail
- 800 CY Riprap
- 500 TN Asphalt Paving with Striping and Signage

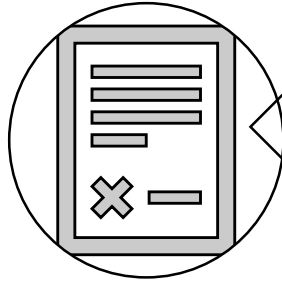
Estimated Construction Cost Range between \$1and \$2 million

Blacktail Bridge Reconstruction

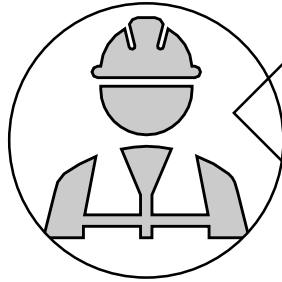
Tentative Timeframes



April - May 2020
Advertisement



May 2020
Award & Contracting



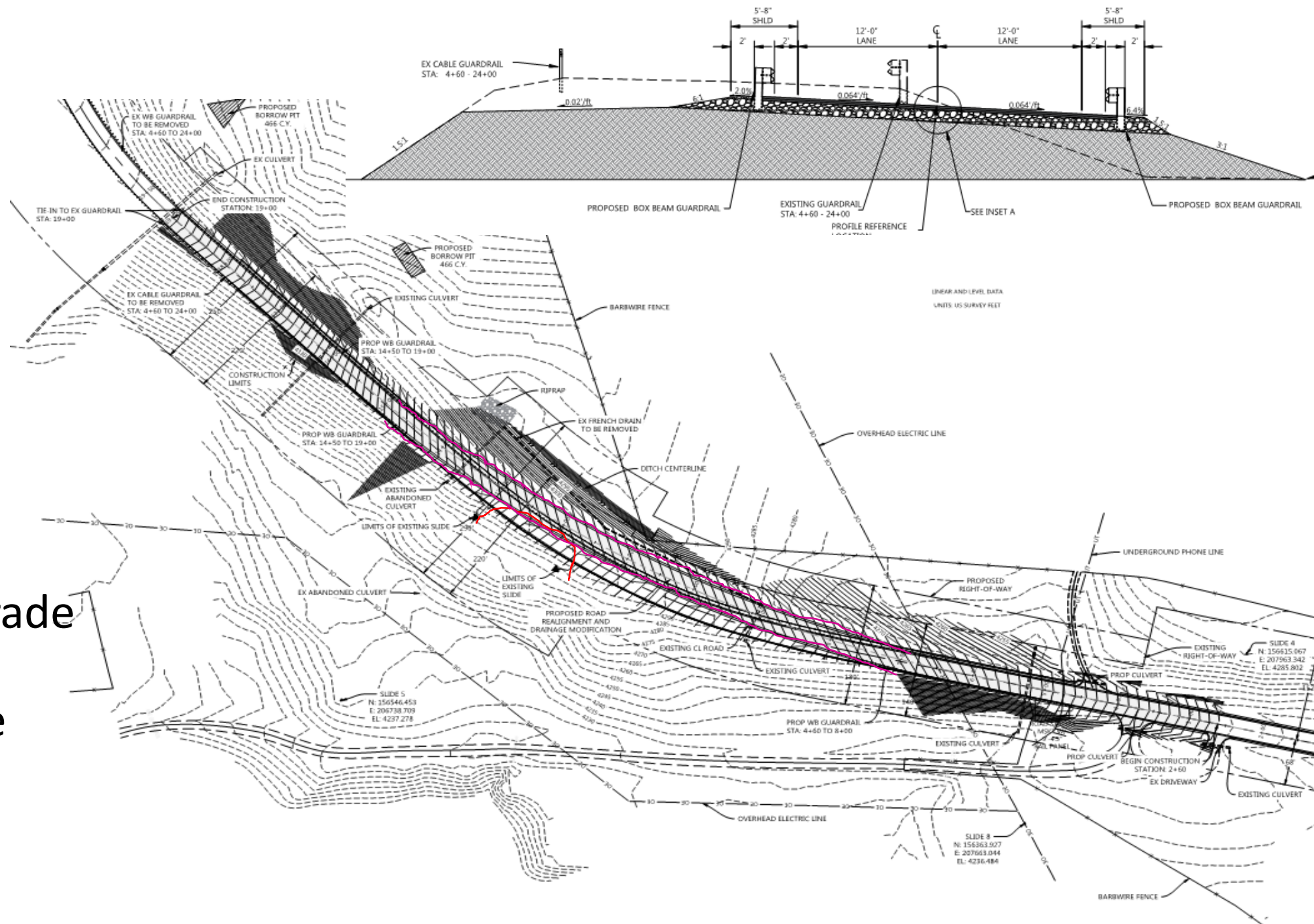
May – November 2020
Project Construction

Route 1 Slide Rehabilitation

Route 1 Slide Rehab Location



- Scope:
Realign and regrade
~1640 ft road in
area of landslide



Route 1 Slide Rehab

Preliminary Costs and Quantities

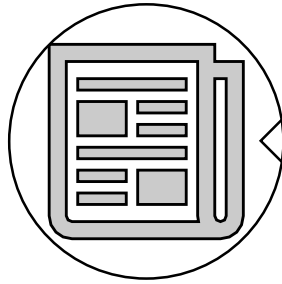
Estimated Quantities

- ~9000 CY Excavation
- ~4700 CY Embankment
- ~2300 CY Crushed Base
- ~1250 TN Asphalt Paving
- ~2500 LF Guardrail (owner furnished)
- Maintenance of traffic

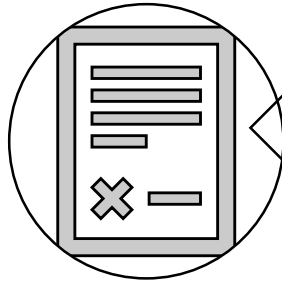
Estimated Construction Cost Range between
\$1 and \$2 million

Route 1 Slide Rehab

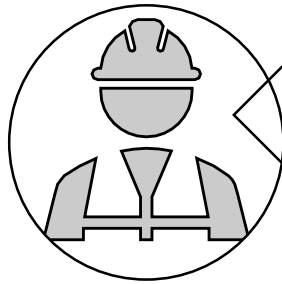
Tentative Timeframes



April 2020
Advertisment



May 2020
Award & Contracting



June – December 2020
Project Construction

Bidding & Contract General Requirements



Bidding Document Purchase



Pre-Bid Meeting



Bids from Single Prime Contractor



Bid Security



100% Performance & Payment Bonds & Insurances



Blackfeet T.E.R.O.

Blackfeet TERO Requirements

65 Blackweasel Road

Browning, MT 59417

406-338-7887

Blkft_tero@blackfeetnation.com

<https://btero.com/>

Questions? Feedback?

Blackfeet Nation:

Don White

Director, Tribal Transportation

640 All Chiefs Road

Browning, MT 59417

dwhite@blackfeetnation.com

406-338-7445

Consulting Engineer:

Amy Darlinton, P.E.

NECI

200 N. 34th Street

Billings, MT 59101

Amy.Darlinton@neciusa.com

406-206-5248

