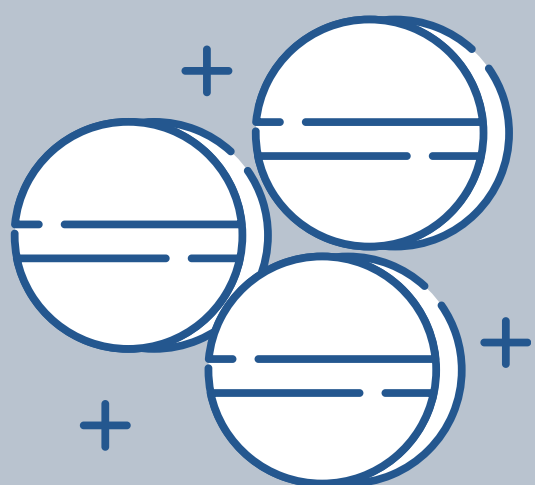


# PSYCHOSIS FACT SHEET

disconnection from reality which results in strange behavior often accompanied by perception of stimuli and other hallucinations.

## SLIM NUMBERS

3 out of 100 will experience psychosis at some time in their lives. About 100,000 adolescents and young adults in the US experience first episode psychosis each year.

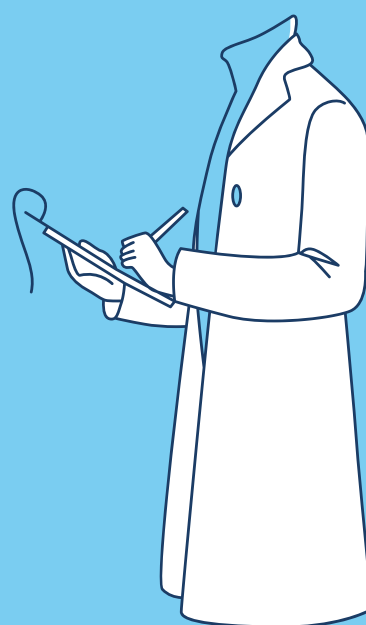


## DIFFERENT PEOPLE AFFECTED

Psychosis can be a symptom of psychotic disorders, as well as: sleep deprivation, stress, certain prescription medications and substance use .

## UNFORTUNATE PROGNOSIS

Consequences of untreated psychosis or psychotic disorders include: Worsening symptoms, Continual mental health decline, Being chronically ill, The need for daily support to handle psychosis



## SUICIDE RATE

Psychotic disorders increase the risk of suicidal tendencies, particularly for people living with schizophrenia. Between 5 and 10% of people with schizophrenia commit suicide.