



VIEW 3D MODEL

Areas	Siding	Other
Facades	3319 ft <sup>2</sup>	879 ft <sup>2</sup>
Openings	1993 ft <sup>2</sup>	258 ft <sup>2</sup>
Trims*	80 ft <sup>2</sup>	272 ft <sup>2</sup>
Unknown (no photos)*	0 ft <sup>2</sup>	17 ft <sup>2</sup>
Total	5392 ft <sup>2</sup>	1426 ft <sup>2</sup>

\*Any trim or unknown material that touches siding is included in the 'Siding' column. If it does not touch siding, then it's included in the 'Other' column.

Openings	Siding	Other
Quantity	90	21
Tops Length	277' 6"	22' 5"
Sills Length	209' 1"	67' 3"
Sides Length	774' 10"	156' 2"
Total Perimeter	1261' 5"	245' 10"

Siding Waste Factor*	Area	Squares
Zero Waste	3389 ft <sup>2</sup>	34
+10%	3729 ft <sup>2</sup>	37½
+18%	3999 ft <sup>2</sup>	40
With Openings	5274 ft <sup>2</sup>	52¾
Openings +10%	5802 ft <sup>2</sup>	58¼
Openings +18%	6222 ft <sup>2</sup>	62¼

\*The first three rows of the Siding Waste Factor table are calculated using the total ft<sup>2</sup> of siding facades, ft<sup>2</sup> of trim touching siding, and ft<sup>2</sup> of unknowns touching siding.

Trim	Siding	Other
Level Starter	224' 1"	329' 9"
Sloped Trim	80' 2"	33' 4"
Vertical Trim	70' 10"	165' 8"

Roofline	Length	Avg. Depth	Soffit Area
Eaves Fascia	411' 4"	-	-
Level Frieze Board	146' 7"	2' 3"	1037 ft <sup>2</sup>
Rakes Fascia	42'	-	-
Sloped Frieze Board	13' 1"	1' 1"	36 ft <sup>2</sup>

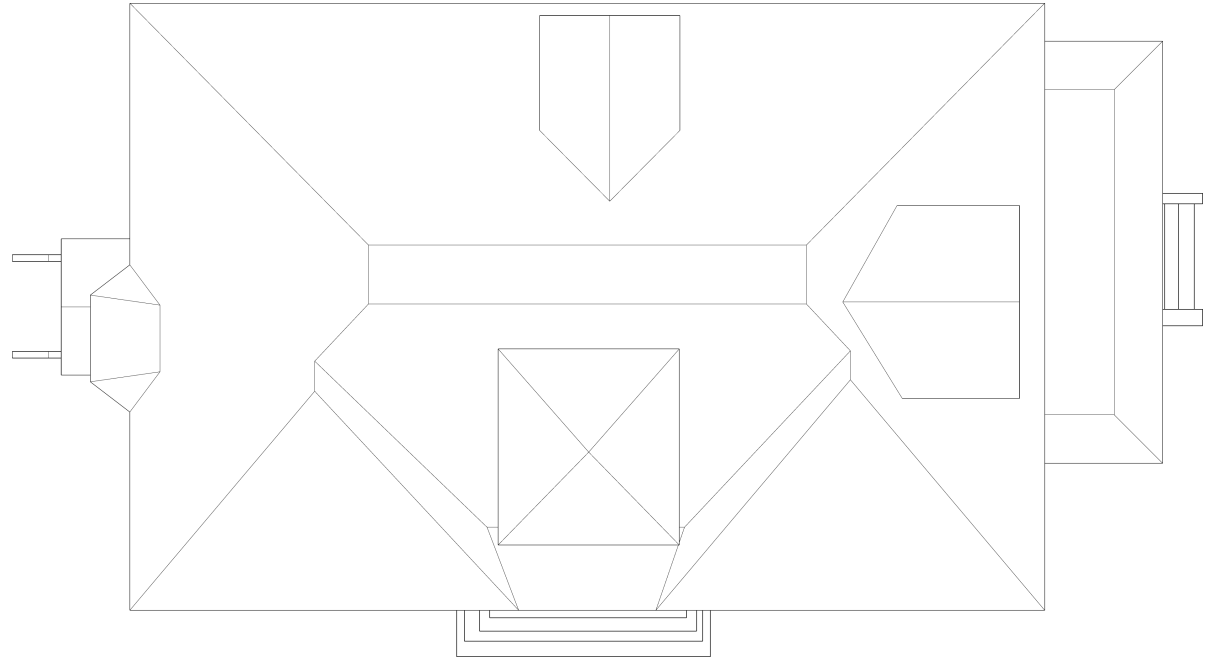
Corners	Siding	Other
Inside Qty	2	-
Inside Length	17' 9"	-
Outside Qty	6	-
Outside Length	61' 7"	-

Accessories	Siding	Other
Shutter Qty	0	0
Shutter Area	0 ft <sup>2</sup>	0 ft <sup>2</sup>
Vents Qty	0	0
Vents Area	0 ft <sup>2</sup>	0 ft <sup>2</sup>

Roof	Area	Total	Length
Roof Facets	4613 ft <sup>2</sup>	27	-
Ridges / Hips	-	28	400' 4"
Valleys	-	10	98' 10"
Rakes	-	6	42'
Eaves	-	23	411' 4"
Flashing	-	17	70' 4"
Step Flashing	-	18	82' 5"
Drip Edge/Perimeter	-	-	453' 4"

Roof Pitch*	Area	Percentage
7/12	3364 ft <sup>2</sup>	72.92%
0/12	355 ft <sup>2</sup>	7.7%
9/12	276 ft <sup>2</sup>	5.98%
3/12	226 ft <sup>2</sup>	4.9%

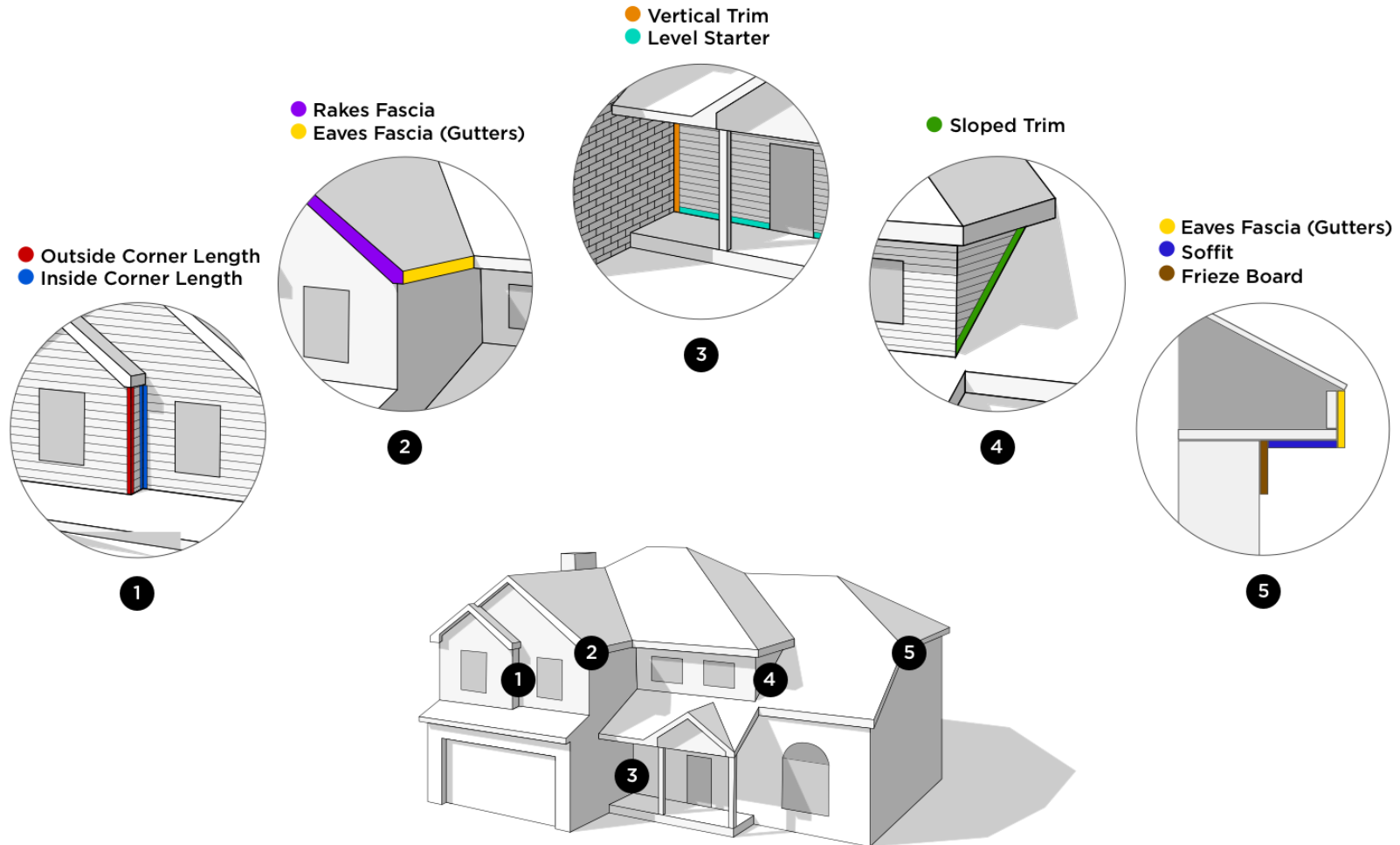
\* Only top 4 values shown. Reference Roof Pitch page for all values.



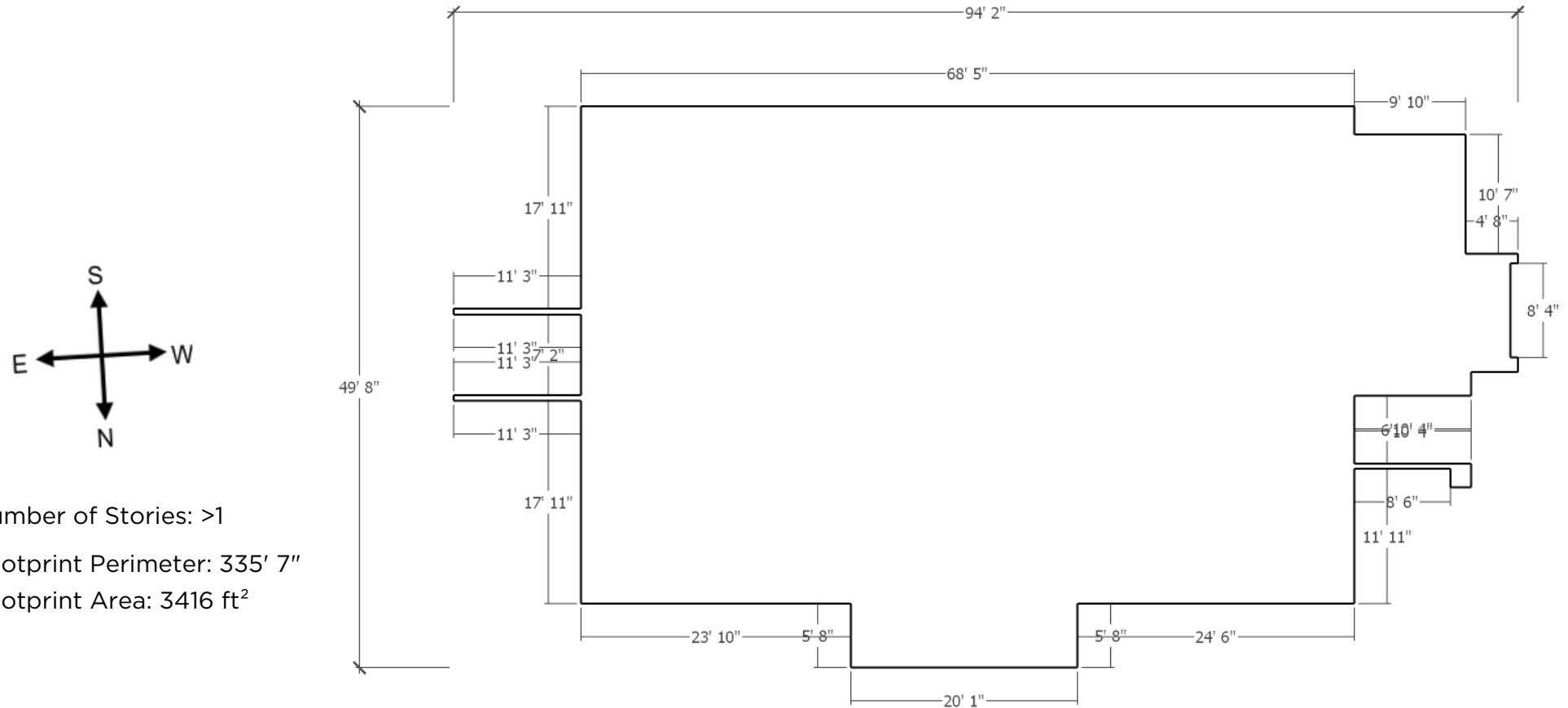
### Waste Factor Calculation

	Zero Waste	+5%	+10%	+15%	+20%
<b>Area</b>	4613 ft <sup>2</sup>	4844 ft <sup>2</sup>	5074 ft <sup>2</sup>	5305 ft <sup>2</sup>	5536 ft <sup>2</sup>
<b>Squares</b>	46⅓	48⅔	51	53⅓	55⅔

The table above provides the total roof area of a given property using waste percentages as noted. Please consider that area values and specific waste factors can be influenced by the size and complexity of the property, captured image quality, specific roofing techniques, and your own level of expertise. Additional square footage for Hip, Ridge, and Starter shingles are not included in this waste factor and will require additional materials.



BACK

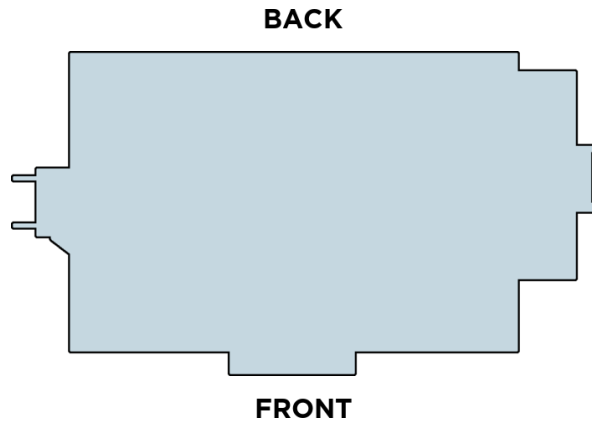


FRONT

Number of Stories: >1

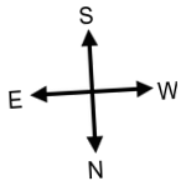
Footprint Perimeter: 335' 7"






Footprint Area: 3416 ft<sup>2</sup>

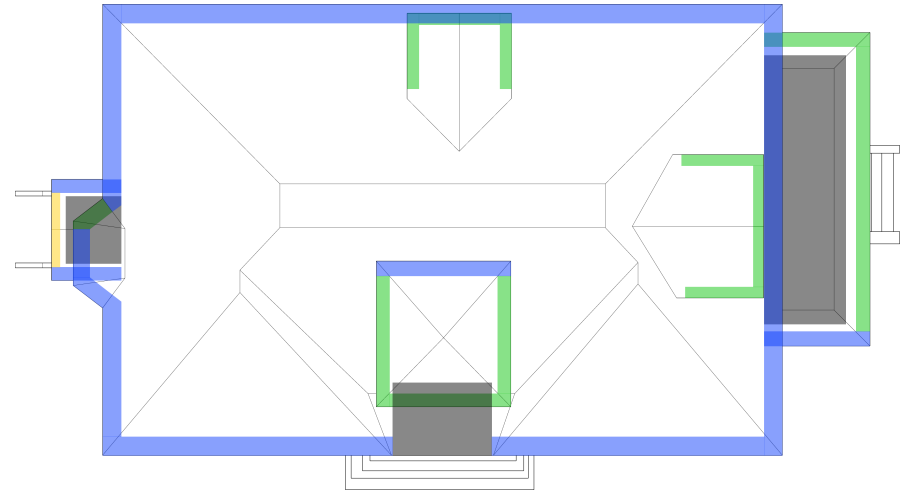


FRONT			RIGHT			LEFT			BACK		
SI-1	-	367 ft <sup>2</sup>	SI-2	-	71 ft <sup>2</sup>	SI-18	-	13 ft <sup>2</sup>	SI-14	-	15 ft <sup>2</sup>
SI-4	-	50 ft <sup>2</sup>	SI-3	-	50 ft <sup>2</sup>	SI-19	-	71 ft <sup>2</sup>	SI-15	-	1,072 ft <sup>2</sup>
SI-6	-	377 ft <sup>2</sup>	SI-5	-	58 ft <sup>2</sup>	SI-20	-	50 ft <sup>2</sup>	SI-16	-	5 ft <sup>2</sup>
SI-8	-	14 ft <sup>2</sup>	SI-7	-	13 ft <sup>2</sup>	SI-21	-	58 ft <sup>2</sup>	SI-17	-	12 ft <sup>2</sup>
SI-13	-	14 ft <sup>2</sup>	SI-9	-	294 ft <sup>2</sup>	SI-22	-	639 ft <sup>2</sup>	SI-23	-	16 ft <sup>2</sup>
			SI-10	-	8 ft <sup>2</sup>	SI-24	-	12 ft <sup>2</sup>			
			SI-11	-	17 ft <sup>2</sup>	SI-25	-	17 ft <sup>2</sup>			
			SI-12	-	6 ft <sup>2</sup>						
822 ft <sup>2</sup>			517 ft <sup>2</sup>			860 ft <sup>2</sup>			1,120 ft <sup>2</sup>		

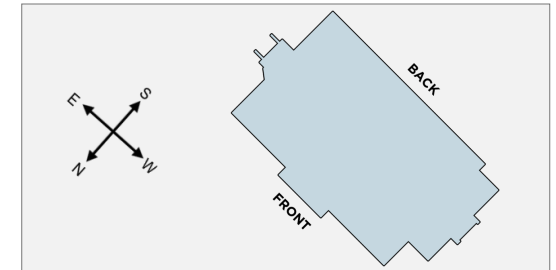
Number of Stories: >1

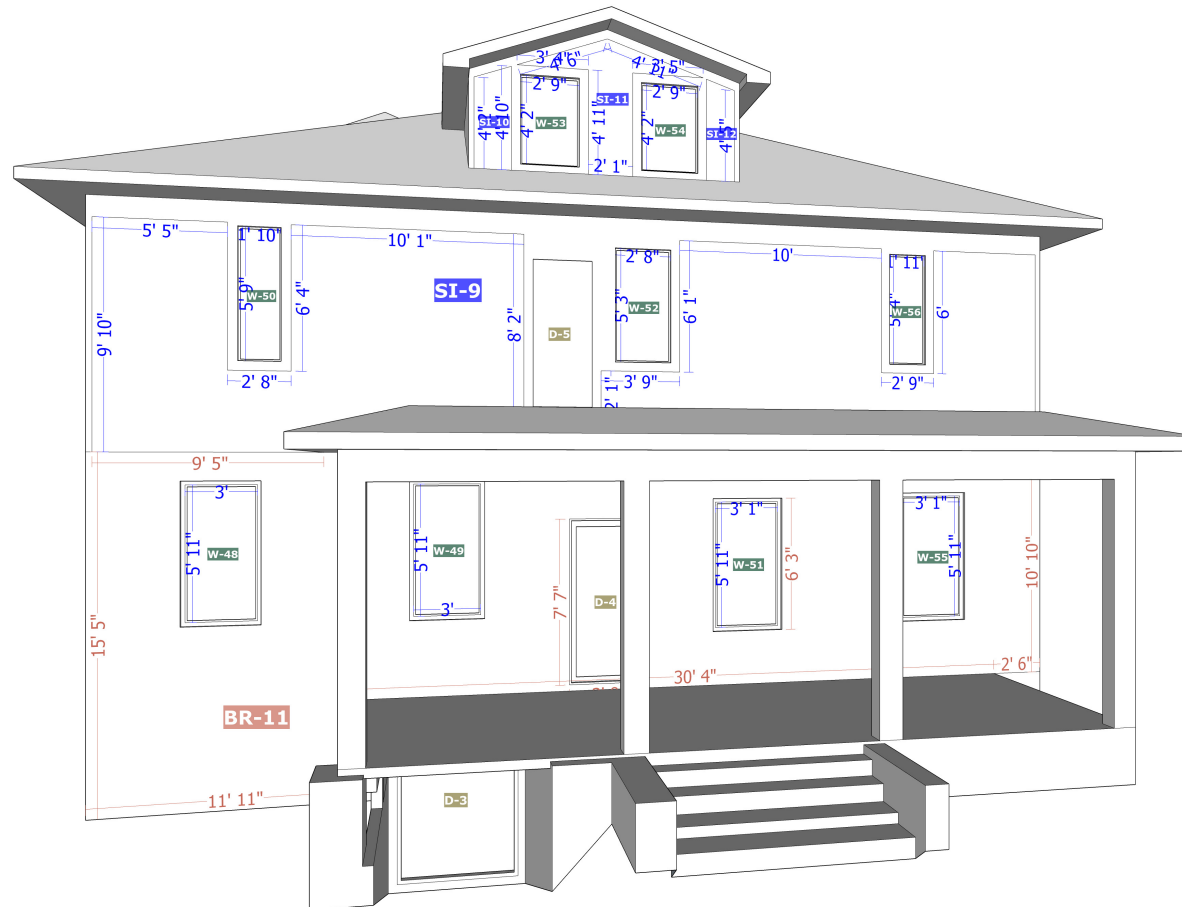
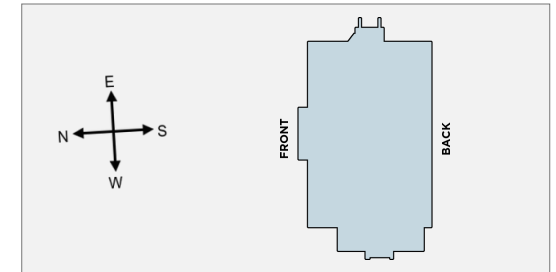


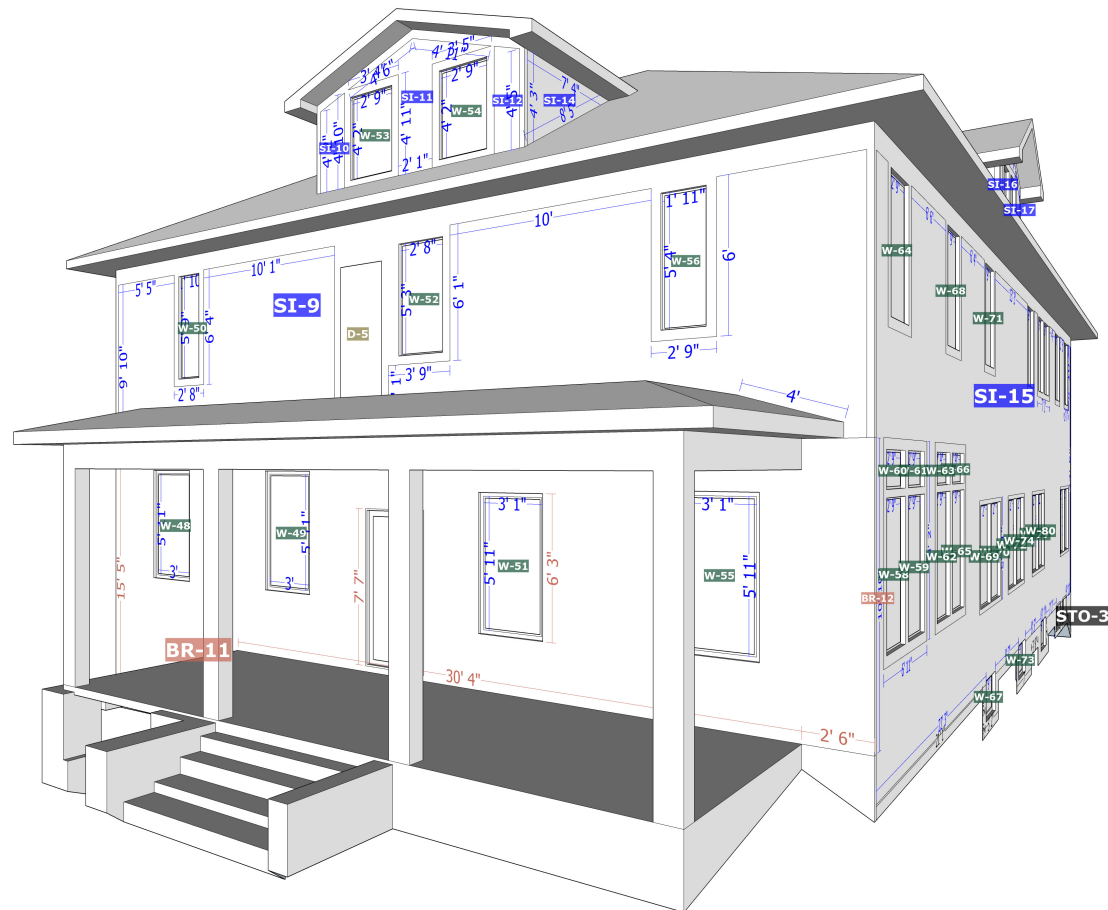
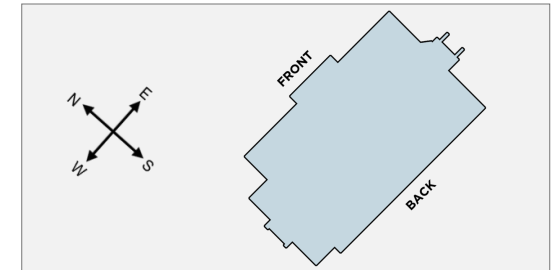
	Type	Depth	# Facets	Total Length	Total Area
	eave	12" - 18"	10	118' 8"	163 ft <sup>2</sup>
	rake	12" - 18"	4	23' 7"	27 ft <sup>2</sup>
	eave	18" - 24"	12	263' 4"	501 ft <sup>2</sup>
	rake	6" - 12"	2	9' 8"	9 ft <sup>2</sup>
	eave	> 48"	3	46' 4"	373 ft <sup>2</sup>
<b>Totals</b>				<b>461' 8"</b>	<b>1073 ft<sup>2</sup></b>

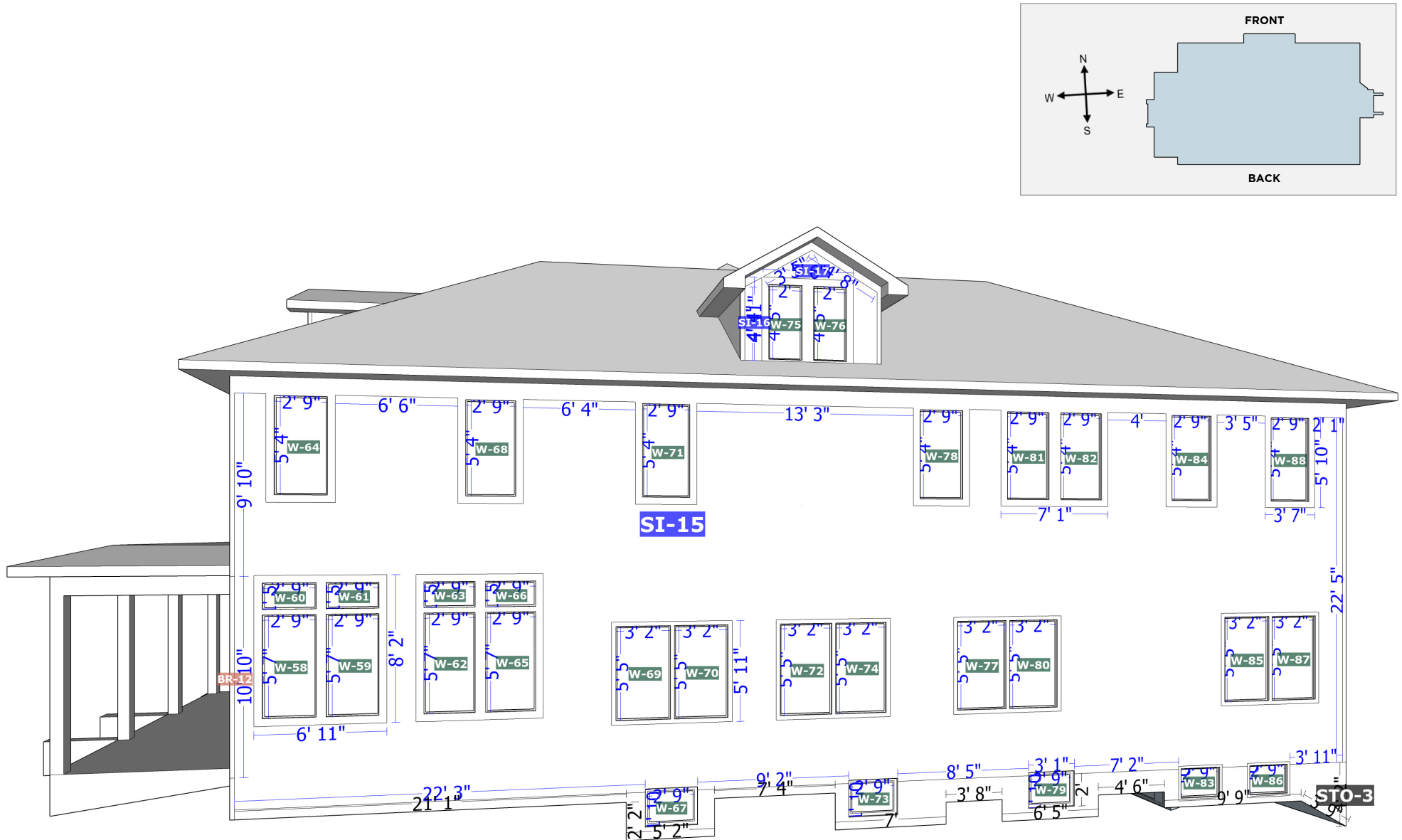






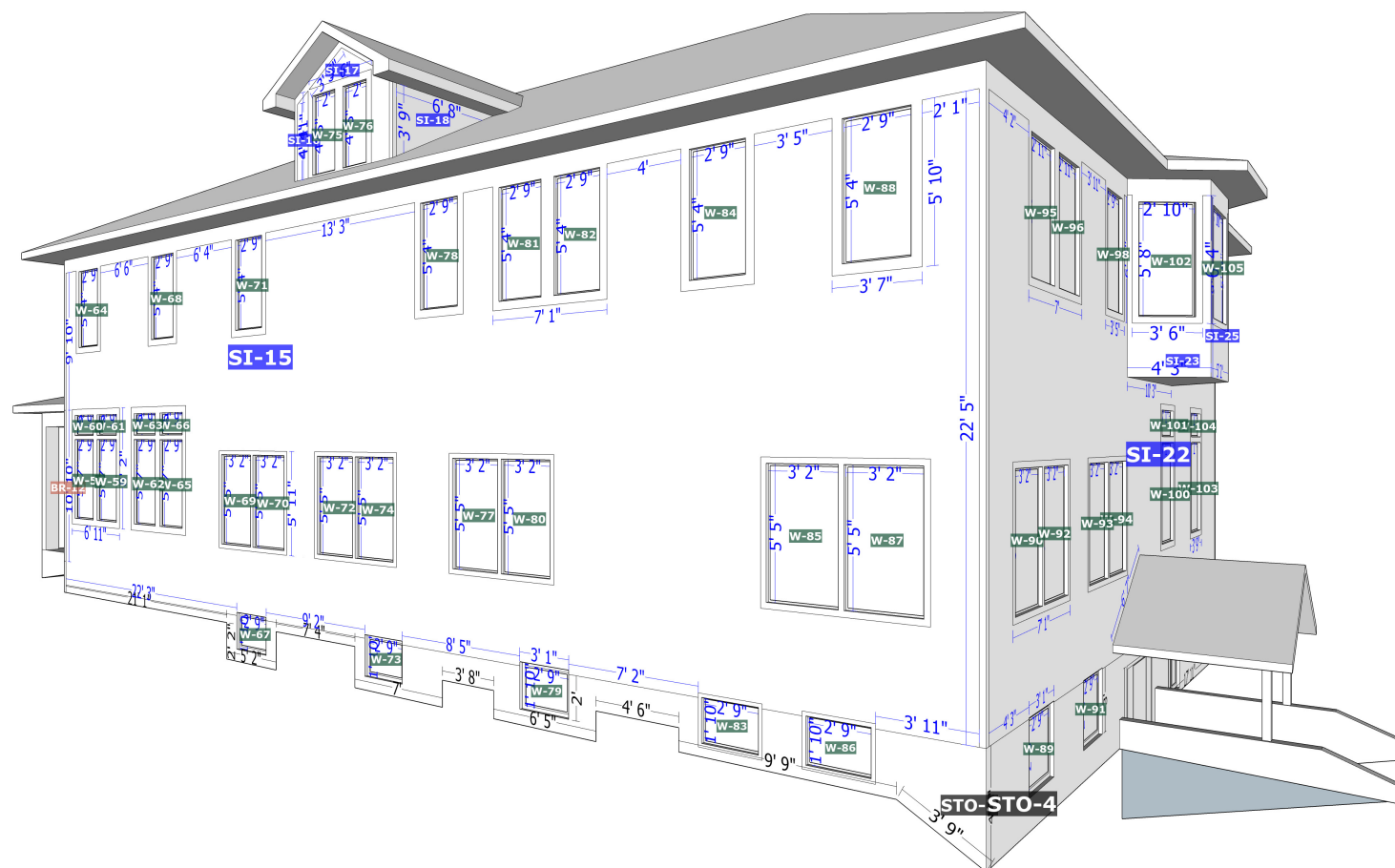
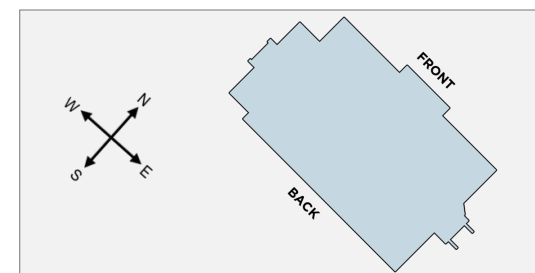


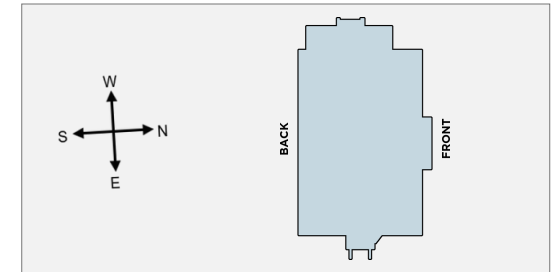


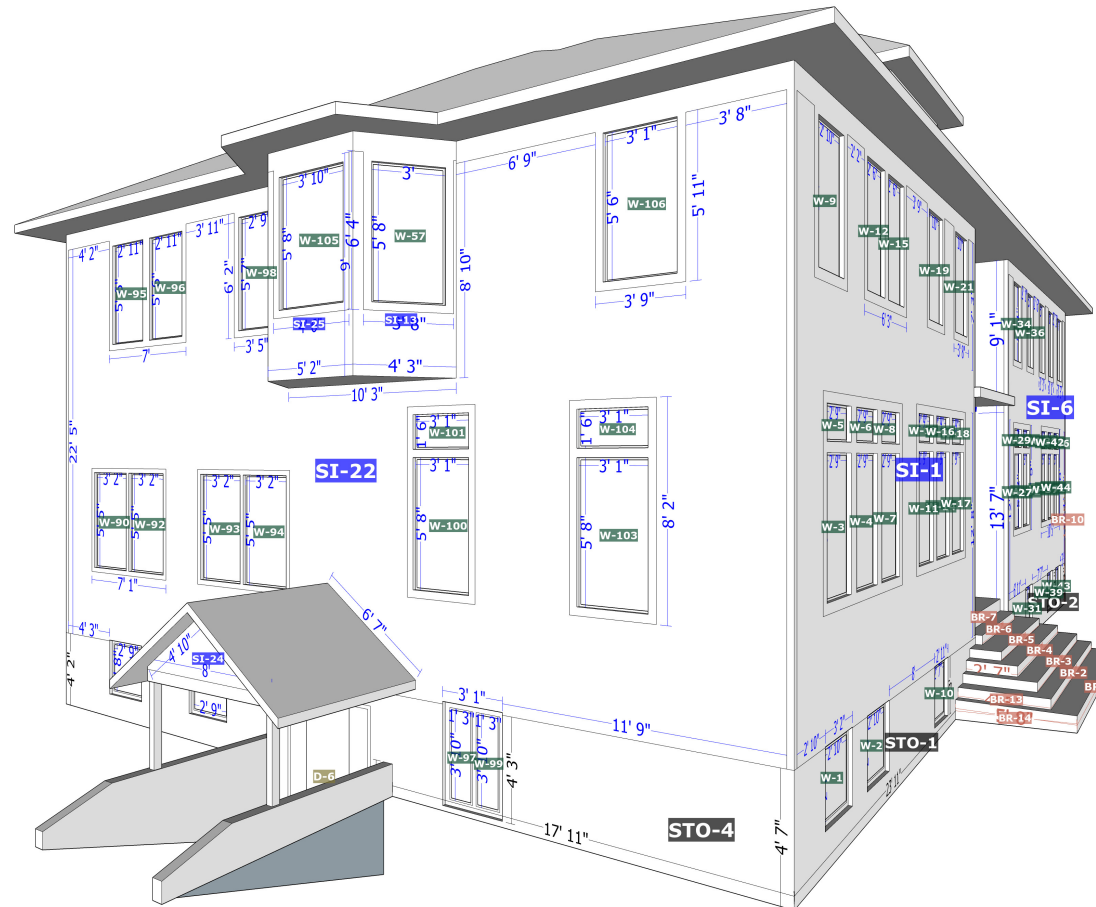
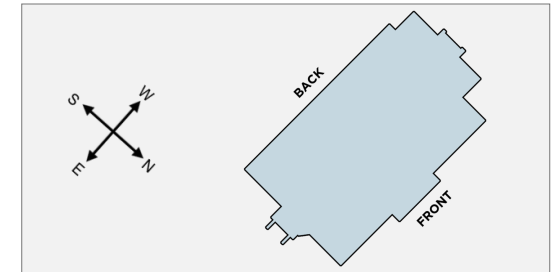




79 Dogwood Drive, Jackson, KY  
BACK-LEFT







## Siding

Facade	Area	Inside Corners	Outside Corners	Openings	Shutters	Vents
SI-1	367 ft <sup>2</sup>	0	1	12	0	0
SI-2	71 ft <sup>2</sup>	0	1	0	0	0
SI-3	50 ft <sup>2</sup>	0	0	0	0	0
SI-4	50 ft <sup>2</sup>	0	2	2	0	0
SI-5	58 ft <sup>2</sup>	0	1	0	0	0
SI-6	377 ft <sup>2</sup>	0	1	10	0	0
SI-7	13 ft <sup>2</sup>	0	0	0	0	0
SI-8	14 ft <sup>2</sup>	0	0	0	0	0
SI-9	294 ft <sup>2</sup>	0	0	0	0	0
SI-10	8 ft <sup>2</sup>	0	0	0	0	0
SI-11	17 ft <sup>2</sup>	0	0	2	0	0
SI-12	6 ft <sup>2</sup>	0	0	0	0	0
SI-13	14 ft <sup>2</sup>	1	1	0	0	0
SI-14	15 ft <sup>2</sup>	0	0	0	0	0
SI-15	1072 ft <sup>2</sup>	0	0	45	0	0
SI-16	5 ft <sup>2</sup>	0	0	0	0	0

## Siding

Facade	Area	Inside Corners	Outside Corners	Openings	Shutters	Vents
SI-17	12 ft <sup>2</sup>	0	0	2	0	0
SI-18	13 ft <sup>2</sup>	0	0	0	0	0
SI-19	71 ft <sup>2</sup>	0	1	6	0	0
SI-20	50 ft <sup>2</sup>	0	0	3	0	0
SI-21	58 ft <sup>2</sup>	0	1	0	0	0
SI-22	639 ft <sup>2</sup>	2	0	8	0	0
SI-23	16 ft <sup>2</sup>	1	1	0	0	0
SI-24	12 ft <sup>2</sup>	0	0	0	0	0
SI-25	17 ft <sup>2</sup>	0	2	0	0	0
Total	3319 ft <sup>2</sup>	4	12	90	0	0

## Brick

Facade	Area	Openings	Shutters	Vents
BR-1	17 ft <sup>2</sup>	0	0	0
BR-2	10 ft <sup>2</sup>	0	0	0
BR-3	9 ft <sup>2</sup>	0	0	0
BR-4	9 ft <sup>2</sup>	0	0	0
BR-5	7 ft <sup>2</sup>	0	0	0
BR-6	6 ft <sup>2</sup>	0	0	0
BR-7	8 ft <sup>2</sup>	0	0	0
BR-8	2 ft <sup>2</sup>	0	0	0
BR-9	3 ft <sup>2</sup>	0	0	0
BR-10	4 ft <sup>2</sup>	0	0	0
BR-11	413 ft <sup>2</sup>	5	0	0
BR-12	3 ft <sup>2</sup>	0	0	0
BR-13	2 ft <sup>2</sup>	0	0	0
BR-14	5 ft <sup>2</sup>	0	0	0
Small Facets	8 ft <sup>2</sup>	0	0	0
Total	506 ft <sup>2</sup>	5	0	0

Facets smaller than 2 ft<sup>2</sup> are not labeled individually. The Small Facets row captures the summed dimensions and features of these facades.

**Stone**

Facade	Area	Openings	Shutters	Vents
STO-1	77 ft <sup>2</sup>	3	0	0
STO-2	69 ft <sup>2</sup>	3	0	0
STO-3	80 ft <sup>2</sup>	5	0	0
STO-4	147 ft <sup>2</sup>	5	0	0
Total	373 ft <sup>2</sup>	16	0	0

**Unknown (missing photos)**

Facade	Area	Openings	Shutters	Vents
UN-1	17 ft <sup>2</sup>	0	0	0
Total	17 ft <sup>2</sup>	0	0	0

### Facades

		Trim			Corners		Roofline		Openings		
Facade	Area	Level Starter	Sloped	Vertical	Inside	Outside	Level Frieze Board	Sloped Frieze Board	Tops	Sills	Sides
SI-1	367 ft <sup>2</sup>	19' 8"	-	1' 7"	-	13' 7"	3"	-	41' 3"	38' 2"	109' 11"
SI-2	71 ft <sup>2</sup>	5' 6"	-	9"	-	13' 7"	5' 6"	-	-	-	12' 10"
SI-3	50 ft <sup>2</sup>	5' 6"	-	9' 1"	-	-	5' 6"	-	-	-	9' 1"
SI-4	50 ft <sup>2</sup>	11'	-	-	-	16' 6"	11' 6"	-	6' 1"	6' 1"	10' 11"
SI-5	58 ft <sup>2</sup>	-	13' 8"	1' 7"	-	8' 3"	12'	-	-	-	-
SI-6	377 ft <sup>2</sup>	19' 3"	-	13' 3"	-	13' 7"	3"	-	38' 8"	34' 1"	109'
SI-7	13 ft <sup>2</sup>	-	7' 8"	3' 9"	-	-	6' 8"	-	-	-	-
SI-8	14 ft <sup>2</sup>	-	8'	4'	-	-	6' 11"	-	-	-	-
SI-9	294 ft <sup>2</sup>	35' 10"	8'	1' 1"	-	-	-	-	30' 11"	12' 7"	60' 9"
SI-10	8 ft <sup>2</sup>	1' 9"	-	-	-	-	-	-	-	-	10' 10"
SI-11	17 ft <sup>2</sup>	2' 1"	-	-	-	-	-	-	6' 9"	-	19' 2"
SI-12	6 ft <sup>2</sup>	1' 5"	-	-	-	-	-	-	-	-	10' 8"
SI-13	14 ft <sup>2</sup>	4' 3"	-	-	8' 10"	9'	-	-	6"	3' 8"	12' 9"
SI-14	15 ft <sup>2</sup>	-	8' 5"	4' 3"	-	-	7' 4"	-	-	-	-
SI-15	1072 ft <sup>2</sup>	52' 7"	-	12' 7"	-	-	-	-	96' 8"	70' 8"	196' 1"

\*Totals de-duplicate any line segments that are shared between multiple facades, and as a result may not represent a total summation of the corresponding column.

### Facades

		Trim			Corners		Roofline		Openings		
Facade	Area	Level Starter	Sloped	Vertical	Inside	Outside	Level Frieze Board	Sloped Frieze Board	Tops	Sills	Sides
SI-16	5 ft <sup>2</sup>	1'	-	-	-	-	-	-	-	-	10' 4"
SI-17	12 ft <sup>2</sup>	1' 6"	-	-	-	-	-	-	5' 6"	-	17' 4"
SI-18	13 ft <sup>2</sup>	-	7' 8"	3' 9"	-	-	6' 8"	-	-	-	-
SI-19	71 ft <sup>2</sup>	5' 6"	-	9"	-	13' 7"	5' 6"	-	-	-	12' 10"
SI-20	50 ft <sup>2</sup>	5' 6"	-	9' 1"	-	-	5' 6"	-	-	-	9' 1"
SI-21	58 ft <sup>2</sup>	-	13' 8"	1' 7"	-	8' 3"	12'	-	-	-	-
SI-22	639 ft <sup>2</sup>	34' 3"	13' 1"	3' 5"	17' 9"	-	17' 5"	3' 5"	49' 10"	35' 8"	138'
SI-23	16 ft <sup>2</sup>	4' 3"	-	-	8' 10"	9'	-	-	8"	3' 6"	12' 9"
SI-24	12 ft <sup>2</sup>	8'	-	3"	-	-	-	9' 8"	-	-	-
SI-25	17 ft <sup>2</sup>	5' 2"	-	-	-	18'	-	-	7"	4' 6"	12' 8"
Total*	3319 ft <sup>2</sup>	224' 1"	80' 2"	70' 10"	17' 9"	61' 7"	103' 3"	13' 1"	277' 6"	209' 1"	774' 10"

\*Totals de-duplicate any line segments that are shared between multiple facades, and as a result may not represent a total summation of the corresponding column.

## Waste Factor Calculation

Facade	Zero Waste	+10%	+18%	With Openings	Openings +10%	Openings +18%
SI-1	367 ft <sup>2</sup>	404 ft <sup>2</sup>	433 ft <sup>2</sup>	481 ft <sup>2</sup>	529 ft <sup>2</sup>	568 ft <sup>2</sup>
SI-2	71 ft <sup>2</sup>	78 ft <sup>2</sup>	84 ft <sup>2</sup>	71 ft <sup>2</sup>	78 ft <sup>2</sup>	84 ft <sup>2</sup>
SI-3	50 ft <sup>2</sup>	55 ft <sup>2</sup>	59 ft <sup>2</sup>	50 ft <sup>2</sup>	55 ft <sup>2</sup>	59 ft <sup>2</sup>
SI-4	50 ft <sup>2</sup>	55 ft <sup>2</sup>	59 ft <sup>2</sup>	72 ft <sup>2</sup>	79 ft <sup>2</sup>	85 ft <sup>2</sup>
SI-5	58 ft <sup>2</sup>	64 ft <sup>2</sup>	68 ft <sup>2</sup>	58 ft <sup>2</sup>	64 ft <sup>2</sup>	68 ft <sup>2</sup>
SI-6	377 ft <sup>2</sup>	415 ft <sup>2</sup>	445 ft <sup>2</sup>	470 ft <sup>2</sup>	517 ft <sup>2</sup>	555 ft <sup>2</sup>
SI-7	13 ft <sup>2</sup>	14 ft <sup>2</sup>	15 ft <sup>2</sup>	13 ft <sup>2</sup>	14 ft <sup>2</sup>	15 ft <sup>2</sup>
SI-8	14 ft <sup>2</sup>	15 ft <sup>2</sup>	17 ft <sup>2</sup>	14 ft <sup>2</sup>	15 ft <sup>2</sup>	17 ft <sup>2</sup>
SI-9	294 ft <sup>2</sup>	323 ft <sup>2</sup>	347 ft <sup>2</sup>	294 ft <sup>2</sup>	323 ft <sup>2</sup>	347 ft <sup>2</sup>
SI-10	8 ft <sup>2</sup>	9 ft <sup>2</sup>	9 ft <sup>2</sup>	8 ft <sup>2</sup>	9 ft <sup>2</sup>	9 ft <sup>2</sup>
SI-11	17 ft <sup>2</sup>	19 ft <sup>2</sup>	20 ft <sup>2</sup>	41 ft <sup>2</sup>	45 ft <sup>2</sup>	48 ft <sup>2</sup>
SI-12	6 ft <sup>2</sup>	7 ft <sup>2</sup>	7 ft <sup>2</sup>	6 ft <sup>2</sup>	7 ft <sup>2</sup>	7 ft <sup>2</sup>
SI-13	14 ft <sup>2</sup>	15 ft <sup>2</sup>	17 ft <sup>2</sup>	14 ft <sup>2</sup>	15 ft <sup>2</sup>	17 ft <sup>2</sup>
SI-14	15 ft <sup>2</sup>	17 ft <sup>2</sup>	18 ft <sup>2</sup>	15 ft <sup>2</sup>	17 ft <sup>2</sup>	18 ft <sup>2</sup>
SI-15	1072 ft <sup>2</sup>	1179 ft <sup>2</sup>	1265 ft <sup>2</sup>	1718 ft <sup>2</sup>	1890 ft <sup>2</sup>	2027 ft <sup>2</sup>

\*The first three rows of the Siding Waste Factor table are calculated using the total ft<sup>2</sup> of siding facades, ft<sup>2</sup> of trim touching siding, and ft<sup>2</sup> of unknowns touching siding.

### Waste Factor Calculation

Facade	Zero Waste	+10%	+18%	With Openings	Openings +10%	Openings +18%
SI-16	5 ft <sup>2</sup>	6 ft <sup>2</sup>	6 ft <sup>2</sup>	5 ft <sup>2</sup>	6 ft <sup>2</sup>	6 ft <sup>2</sup>
SI-17	12 ft <sup>2</sup>	13 ft <sup>2</sup>	14 ft <sup>2</sup>	30 ft <sup>2</sup>	33 ft <sup>2</sup>	35 ft <sup>2</sup>
SI-18	13 ft <sup>2</sup>	14 ft <sup>2</sup>	15 ft <sup>2</sup>	13 ft <sup>2</sup>	14 ft <sup>2</sup>	15 ft <sup>2</sup>
SI-19	71 ft <sup>2</sup>	78 ft <sup>2</sup>	84 ft <sup>2</sup>	119 ft <sup>2</sup>	131 ft <sup>2</sup>	140 ft <sup>2</sup>
SI-20	50 ft <sup>2</sup>	55 ft <sup>2</sup>	59 ft <sup>2</sup>	68 ft <sup>2</sup>	75 ft <sup>2</sup>	80 ft <sup>2</sup>
SI-21	58 ft <sup>2</sup>	64 ft <sup>2</sup>	68 ft <sup>2</sup>	58 ft <sup>2</sup>	64 ft <sup>2</sup>	68 ft <sup>2</sup>
SI-22	639 ft <sup>2</sup>	703 ft <sup>2</sup>	754 ft <sup>2</sup>	751 ft <sup>2</sup>	826 ft <sup>2</sup>	886 ft <sup>2</sup>
SI-23	16 ft <sup>2</sup>	18 ft <sup>2</sup>	19 ft <sup>2</sup>	16 ft <sup>2</sup>	18 ft <sup>2</sup>	19 ft <sup>2</sup>
SI-24	12 ft <sup>2</sup>	13 ft <sup>2</sup>	14 ft <sup>2</sup>	12 ft <sup>2</sup>	13 ft <sup>2</sup>	14 ft <sup>2</sup>
SI-25	17 ft <sup>2</sup>	19 ft <sup>2</sup>	20 ft <sup>2</sup>	17 ft <sup>2</sup>	19 ft <sup>2</sup>	20 ft <sup>2</sup>
Trims	70 ft <sup>2</sup>	77 ft <sup>2</sup>	83 ft <sup>2</sup>	860 ft <sup>2</sup>	946 ft <sup>2</sup>	1015 ft <sup>2</sup>
Total	3389 ft <sup>2</sup>	3729 ft <sup>2</sup>	3999 ft <sup>2</sup>	5274 ft <sup>2</sup>	5802 ft <sup>2</sup>	6222 ft <sup>2</sup>

\*The first three rows of the Siding Waste Factor table are calculated using the total ft<sup>2</sup> of siding facades, ft<sup>2</sup> of trim touching siding, and ft<sup>2</sup> of unknowns touching siding.

The table above provides the area of siding on a given property, segmented by individual and in sum total form. Values include openings (doors & windows) and waste percentages as noted. Please consider that area values and specific waste factors can be influenced by the size and complexity of the property, captured image quality, specific siding techniques, and your own level of expertise. Accessories are not included in these values and may require additional material.

**Windows**

Opening	Width x Height	United Inches	Area
W-1	34" x 32"	66"	7 ft <sup>2</sup>
W-2	34" x 32"	66"	7 ft <sup>2</sup>
W-3	33" x 64"	98"	15 ft <sup>2</sup>
W-4	33" x 64"	98"	15 ft <sup>2</sup>
W-5	33" x 16"	50"	4 ft <sup>2</sup>
W-6	33" x 16"	50"	4 ft <sup>2</sup>
W-7	33" x 64"	98"	15 ft <sup>2</sup>
W-8	33" x 16"	50"	4 ft <sup>2</sup>
W-9	34" x 64"	98"	15 ft <sup>2</sup>
W-10	31" x 32"	63"	7 ft <sup>2</sup>
W-11	33" x 64"	98"	15 ft <sup>2</sup>
W-12	30" x 64"	94"	13 ft <sup>2</sup>
W-13	33" x 16"	50"	4 ft <sup>2</sup>
W-14	33" x 64"	98"	15 ft <sup>2</sup>
W-15	30" x 64"	94"	13 ft <sup>2</sup>
W-16	33" x 16"	50"	4 ft <sup>2</sup>
W-17	33" x 64"	98"	15 ft <sup>2</sup>

**Doors**

Opening	Width x Height	Area
D-1	60" x 80"	33 ft <sup>2</sup>
D-1 Entire	60" x 80"	33 ft <sup>2</sup>
D-2	60" x 80"	33 ft <sup>2</sup>
D-2 Entire	60" x 80"	33 ft <sup>2</sup>
D-3 Entire	60" x 80"	33 ft <sup>2</sup>
D-4	36" x 82"	21 ft <sup>2</sup>
D-4 Entire	36" x 82"	21 ft <sup>2</sup>
D-5	32" x 80"	18 ft <sup>2</sup>
D-6	32" x 80"	18 ft <sup>2</sup>
D-6 Entire	61" x 82"	35 ft <sup>2</sup>
Total	-	173 ft <sup>2</sup>

\*Total door square footage includes entire door package (e.g. with transoms, sidelites, etc.)

**Windows (cont.)**

Opening	Width x Height	United Inches	Area
W-18	33" x 16"	50"	4 ft <sup>2</sup>
W-19	34" x 64"	98"	15 ft <sup>2</sup>
W-20	24" x 64"	88"	11 ft <sup>2</sup>
W-21	34" x 64"	98"	15 ft <sup>2</sup>
W-22	24" x 34"	58"	6 ft <sup>2</sup>
W-23	59" x 34"	93"	14 ft <sup>2</sup>
W-24	59" x 21"	80"	9 ft <sup>2</sup>
W-25	24" x 64"	88"	11 ft <sup>2</sup>
W-26	24" x 34"	58"	6 ft <sup>2</sup>
W-27	33" x 62"	95"	14 ft <sup>2</sup>
W-28	21" x 59"	80"	9 ft <sup>2</sup>
W-29	33" x 15"	48"	4 ft <sup>2</sup>
W-30	28" x 55"	83"	11 ft <sup>2</sup>
W-31	31" x 32"	63"	7 ft <sup>2</sup>
W-32	33" x 62"	95"	14 ft <sup>2</sup>
W-33	28" x 55"	83"	11 ft <sup>2</sup>
W-34	34" x 64"	98"	15 ft <sup>2</sup>

**Windows (cont.)**

Opening	Width x Height	United Inches	Area
W-35	33" x 15"	48"	4 ft <sup>2</sup>
W-36	29" x 64"	93"	13 ft <sup>2</sup>
W-37	33" x 64"	98"	15 ft <sup>2</sup>
W-38	33" x 16"	50"	4 ft <sup>2</sup>
W-39	31" x 32"	63"	7 ft <sup>2</sup>
W-40	29" x 64"	93"	13 ft <sup>2</sup>
W-41	33" x 64"	98"	15 ft <sup>2</sup>
W-42	33" x 16"	50"	4 ft <sup>2</sup>
W-43	31" x 32"	63"	7 ft <sup>2</sup>
W-44	33" x 64"	98"	15 ft <sup>2</sup>
W-45	27" x 64"	91"	12 ft <sup>2</sup>
W-46	33" x 16"	50"	4 ft <sup>2</sup>
W-47	31" x 64"	95"	14 ft <sup>2</sup>
W-48	36" x 71"	106"	17 ft <sup>2</sup>
W-49	36" x 71"	106"	17 ft <sup>2</sup>
W-50	22" x 69"	91"	10 ft <sup>2</sup>
W-51	37" x 71"	107"	18 ft <sup>2</sup>

**Windows (cont.)**

Opening	Width x Height	United Inches	Area
W-52	32" x 63"	94"	14 ft <sup>2</sup>
W-53	33" x 50"	83"	12 ft <sup>2</sup>
W-54	33" x 50"	83"	12 ft <sup>2</sup>
W-55	37" x 71"	107"	18 ft <sup>2</sup>
W-56	23" x 64"	86"	10 ft <sup>2</sup>
W-57	36" x 68"	104"	17 ft <sup>2</sup>
W-58	33" x 67"	100"	16 ft <sup>2</sup>
W-59	33" x 67"	100"	16 ft <sup>2</sup>
W-60	33" x 17"	50"	4 ft <sup>2</sup>
W-61	33" x 17"	50"	4 ft <sup>2</sup>
W-62	33" x 67"	100"	16 ft <sup>2</sup>
W-63	33" x 17"	50"	4 ft <sup>2</sup>
W-64	33" x 64"	97"	15 ft <sup>2</sup>
W-65	33" x 67"	100"	16 ft <sup>2</sup>
W-66	33" x 17"	50"	4 ft <sup>2</sup>
W-67	33" x 22"	55"	5 ft <sup>2</sup>
W-68	33" x 64"	97"	15 ft <sup>2</sup>

**Windows (cont.)**

Opening	Width x Height	United Inches	Area
W-69	38" x 65"	103"	17 ft <sup>2</sup>
W-70	38" x 65"	103"	17 ft <sup>2</sup>
W-71	33" x 64"	97"	15 ft <sup>2</sup>
W-72	38" x 65"	103"	17 ft <sup>2</sup>
W-73	33" x 22"	55"	5 ft <sup>2</sup>
W-74	38" x 65"	103"	17 ft <sup>2</sup>
W-75	24" x 53"	77"	9 ft <sup>2</sup>
W-76	24" x 53"	77"	9 ft <sup>2</sup>
W-77	38" x 65"	103"	17 ft <sup>2</sup>
W-78	33" x 64"	97"	15 ft <sup>2</sup>
W-79	33" x 22"	55"	5 ft <sup>2</sup>
W-80	38" x 65"	103"	17 ft <sup>2</sup>
W-81	33" x 64"	97"	15 ft <sup>2</sup>
W-82	33" x 64"	97"	15 ft <sup>2</sup>
W-83	33" x 22"	55"	5 ft <sup>2</sup>
W-84	33" x 64"	97"	15 ft <sup>2</sup>
W-85	38" x 65"	103"	17 ft <sup>2</sup>

**Windows (cont.)**

Opening	Width x Height	United Inches	Area
W-86	33" x 22"	55"	5 ft <sup>2</sup>
W-87	38" x 65"	103"	17 ft <sup>2</sup>
W-88	33" x 64"	97"	15 ft <sup>2</sup>
W-89	33" x 32"	65"	7 ft <sup>2</sup>
W-90	38" x 65"	103"	17 ft <sup>2</sup>
W-91	33" x 32"	65"	7 ft <sup>2</sup>
W-92	38" x 65"	103"	17 ft <sup>2</sup>
W-93	38" x 65"	103"	17 ft <sup>2</sup>
W-94	38" x 65"	103"	17 ft <sup>2</sup>
W-95	35" x 66"	101"	16 ft <sup>2</sup>
W-96	35" x 66"	101"	16 ft <sup>2</sup>
W-97	15" x 46"	61"	5 ft <sup>2</sup>
W-98	33" x 67"	101"	16 ft <sup>2</sup>
W-99	15" x 46"	61"	5 ft <sup>2</sup>
W-100	37" x 68"	104"	17 ft <sup>2</sup>
W-101	37" x 18"	54"	5 ft <sup>2</sup>
W-102	34" x 68"	102"	16 ft <sup>2</sup>

**Windows (cont.)**

Opening	Width x Height	United Inches	Area
W-103	37" x 68"	104"	17 ft <sup>2</sup>
W-104	37" x 18"	54"	5 ft <sup>2</sup>
W-105	46" x 68"	114"	22 ft <sup>2</sup>
W-106	37" x 66"	103"	17 ft <sup>2</sup>
Total	-	8859"	1238 ft <sup>2</sup>

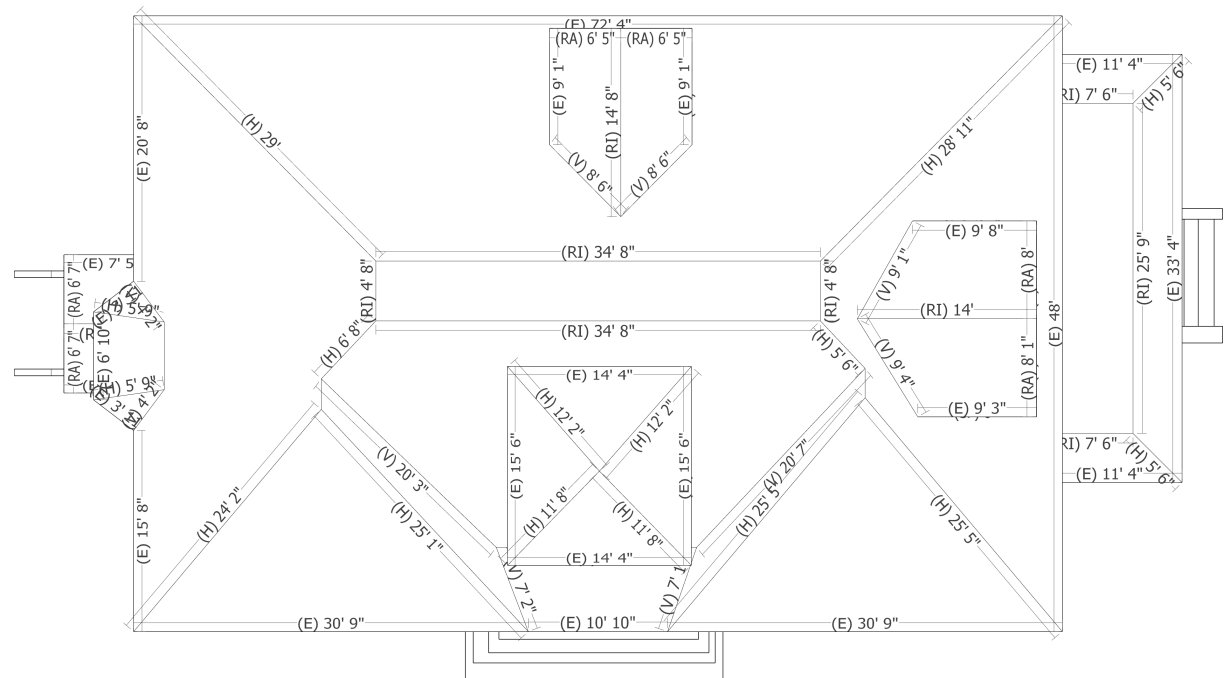


## Complete Measurements

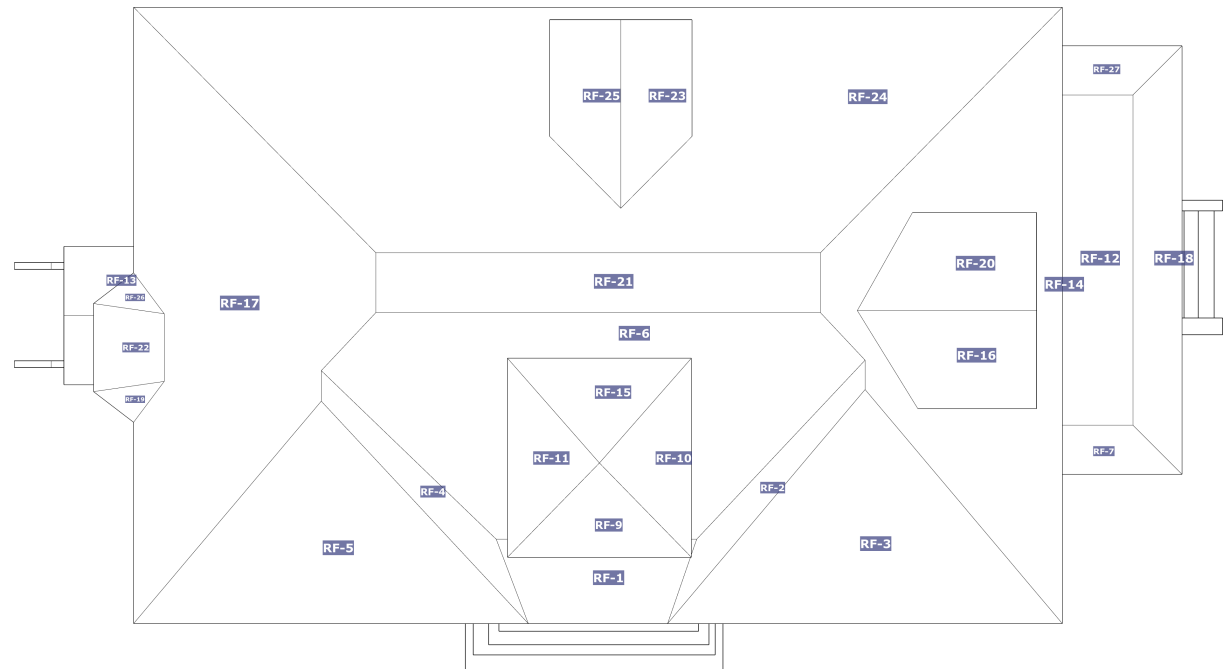
79 Dogwood Drive, Jackson, KY  
ROOF MEASUREMENTS

Roof	Length
Ridges (RI)	160'
Hips (H)	240' 4"
Valleys (V)	98' 10"
Rakes (RA)	42'
Eaves (E)	411' 4"
Flashing (F)*	70' 4"
Step Flashing (SF)*	82' 5"
Transition Line (TL)	-

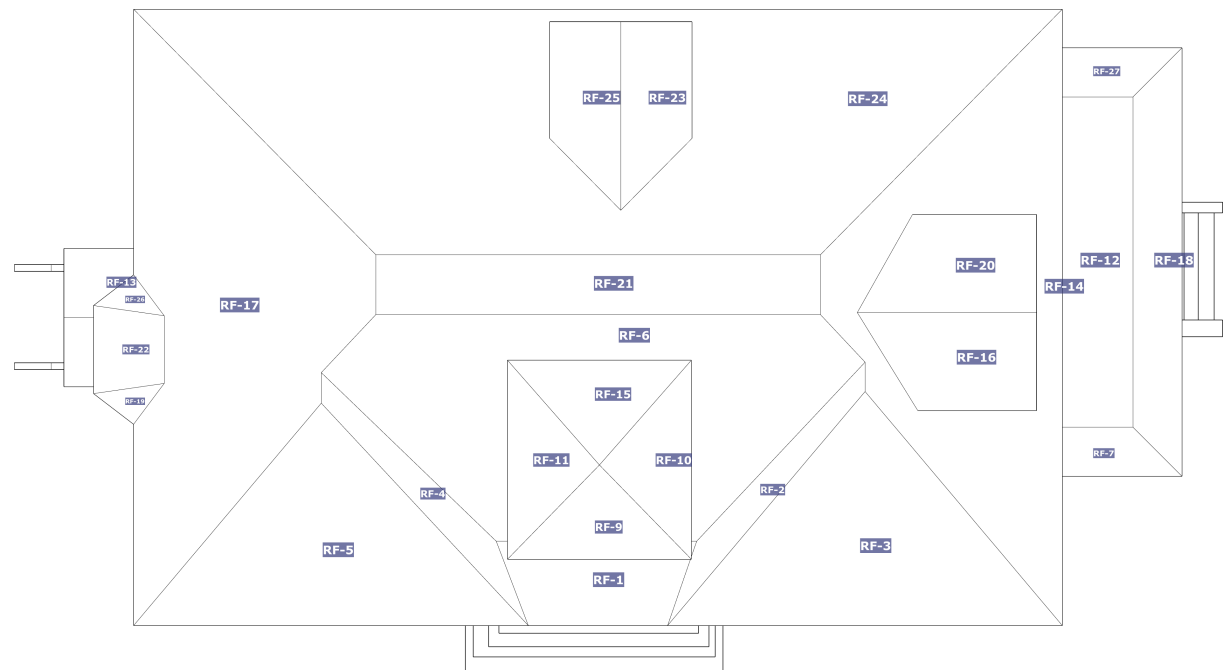
\*Flashing and Step Flashing information are better accessible on the 3D reconstruction for this job



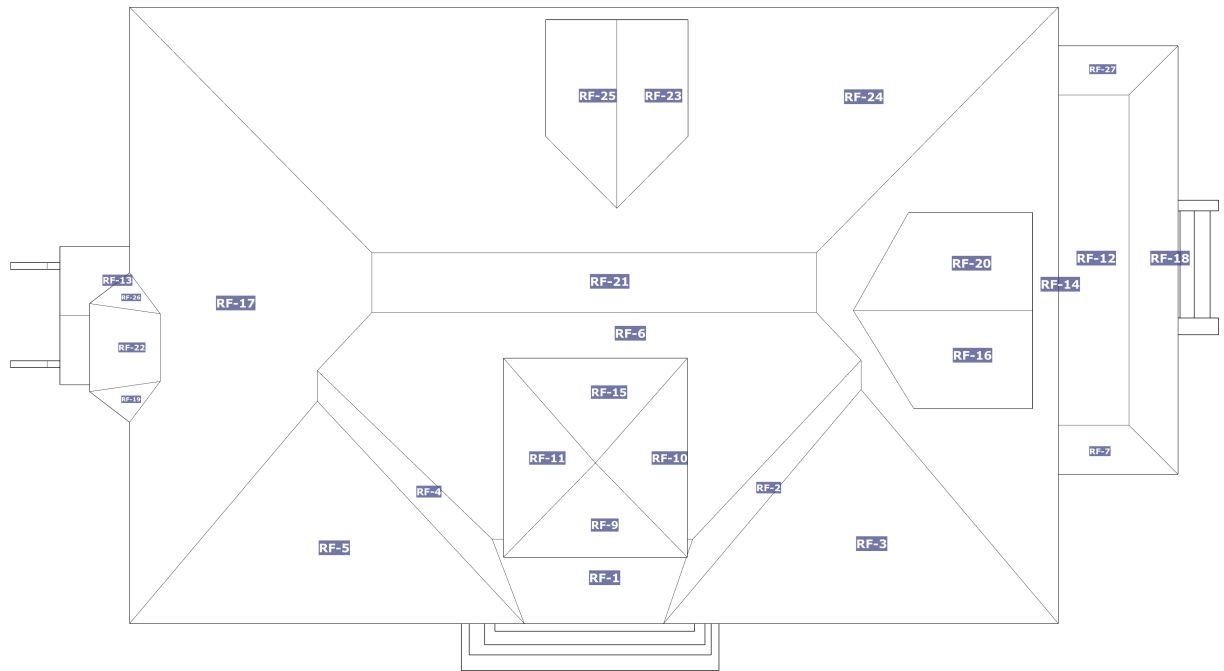
Facet	Area	Pitch
RF-1	89 ft <sup>2</sup>	2/12
RF-2	52 ft <sup>2</sup>	7/12
RF-3	311 ft <sup>2</sup>	7/12
RF-4	54 ft <sup>2</sup>	7/12
RF-5	296 ft <sup>2</sup>	7/12
RF-6	462 ft <sup>2</sup>	7/12
RF-7	37 ft <sup>2</sup>	3/12
RF-8	49 ft <sup>2</sup>	8/12
RF-9	66 ft <sup>2</sup>	9/12
RF-10	70 ft <sup>2</sup>	9/12
RF-11	70 ft <sup>2</sup>	9/12
RF-12	193 ft <sup>2</sup>	0/12



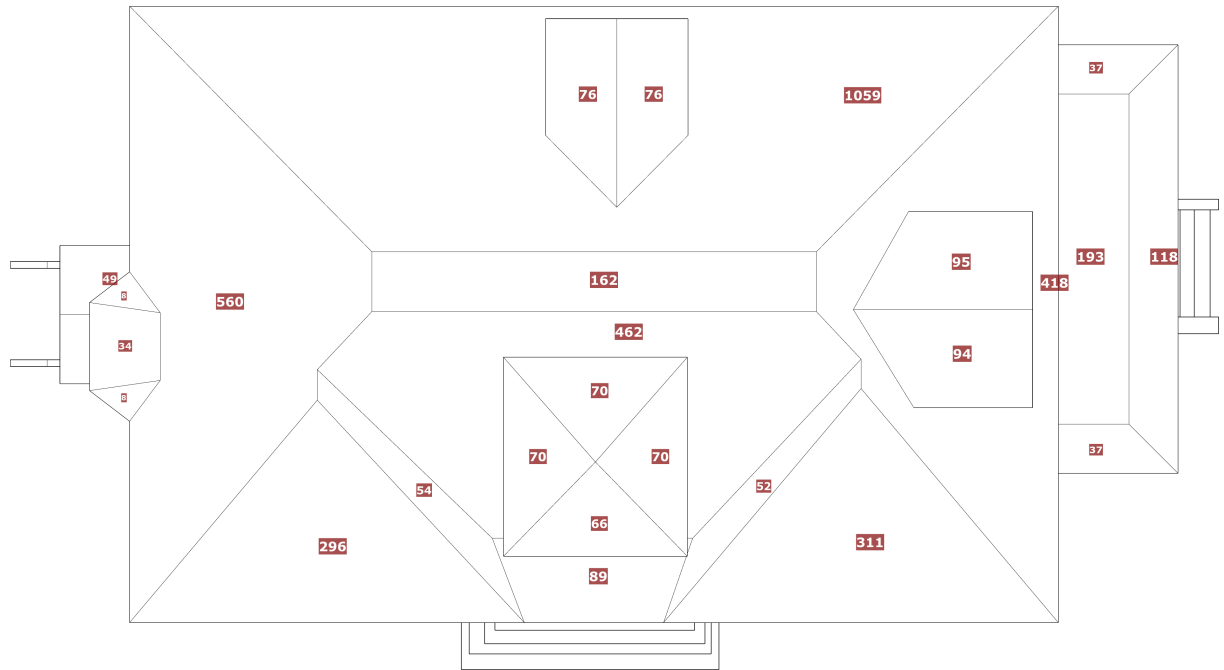
Facet	Area	Pitch
RF-13	49 ft <sup>2</sup>	8/12
RF-14	418 ft <sup>2</sup>	7/12
RF-15	70 ft <sup>2</sup>	9/12
RF-16	94 ft <sup>2</sup>	4/12
RF-17	560 ft <sup>2</sup>	7/12
RF-18	118 ft <sup>2</sup>	3/12
RF-19	8 ft <sup>2</sup>	4/12
RF-20	95 ft <sup>2</sup>	4/12
RF-21	162 ft <sup>2</sup>	0/12
RF-22	34 ft <sup>2</sup>	3/12
RF-23	76 ft <sup>2</sup>	7/12
RF-24	1059 ft <sup>2</sup>	7/12



Facet	Area	Pitch
RF-25	76 ft <sup>2</sup>	7/12
RF-26	8 ft <sup>2</sup>	4/12
RF-27	37 ft <sup>2</sup>	3/12



Roof	Facets	Total
Total	27	4613 ft <sup>2</sup>



Roof Pitch	Area	Percentage
7/12	3364 ft <sup>2</sup>	72.92%
0/12	355 ft <sup>2</sup>	7.7%
9/12	276 ft <sup>2</sup>	5.98%
3/12	226 ft <sup>2</sup>	4.9%
4/12	205 ft <sup>2</sup>	4.44%
8/12	98 ft <sup>2</sup>	2.12%
2/12	89 ft <sup>2</sup>	1.93%

