

Ridgewood Water New Headquarters

Elaine Silverstein





Presented by Elaine Silverstein

February 2022

Ridgewood Water Headquarters

Why plant native plants?

- They're beautiful and easy to grow (but sometimes hard to find)
- There's a native plant for any site or any soil, no matter how poor or difficult
- Native plants are an essential part of our ecosystem
- Only native plants can feed insects throughout their life cycles (no native plants, no insects)
- Birds depend on insect protein to feed their young (no insects, no birds)



Care of a native-plant garden

- Most plants will need supplemental water during dry periods **for their first growing season only**
- If you've chosen the right plants for your site, you should not have to water after that
- Do not use pesticides or herbicides, and beware of purchasing plants treated with systemic pesticides
- In most cases, plants will never need fertilizer or any type of soil amendment
- As the garden fills in, very little weeding should be necessary
- Do not clean up the garden in fall. Wait until new growth appears in spring

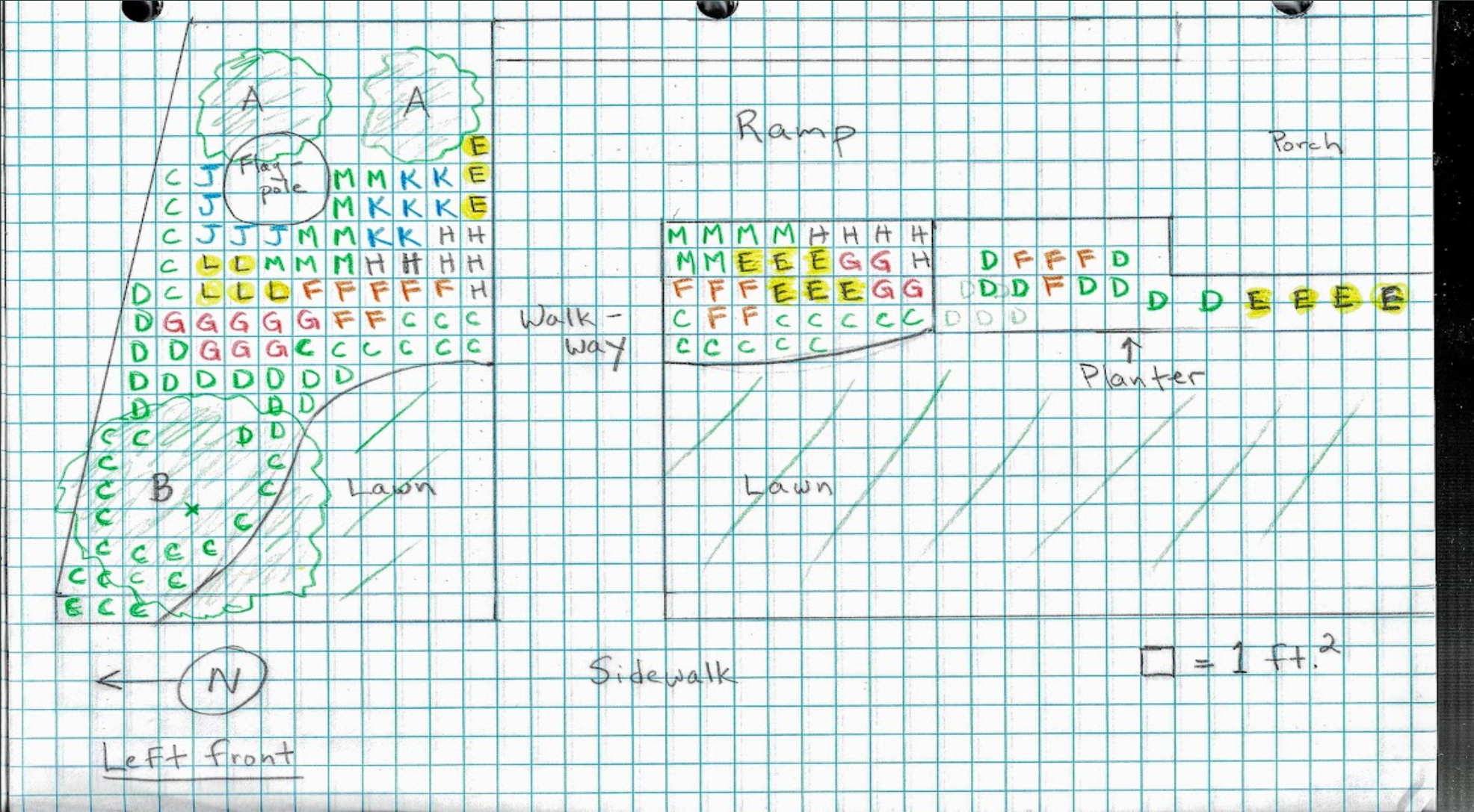


Optimum planting time: mid- to late April

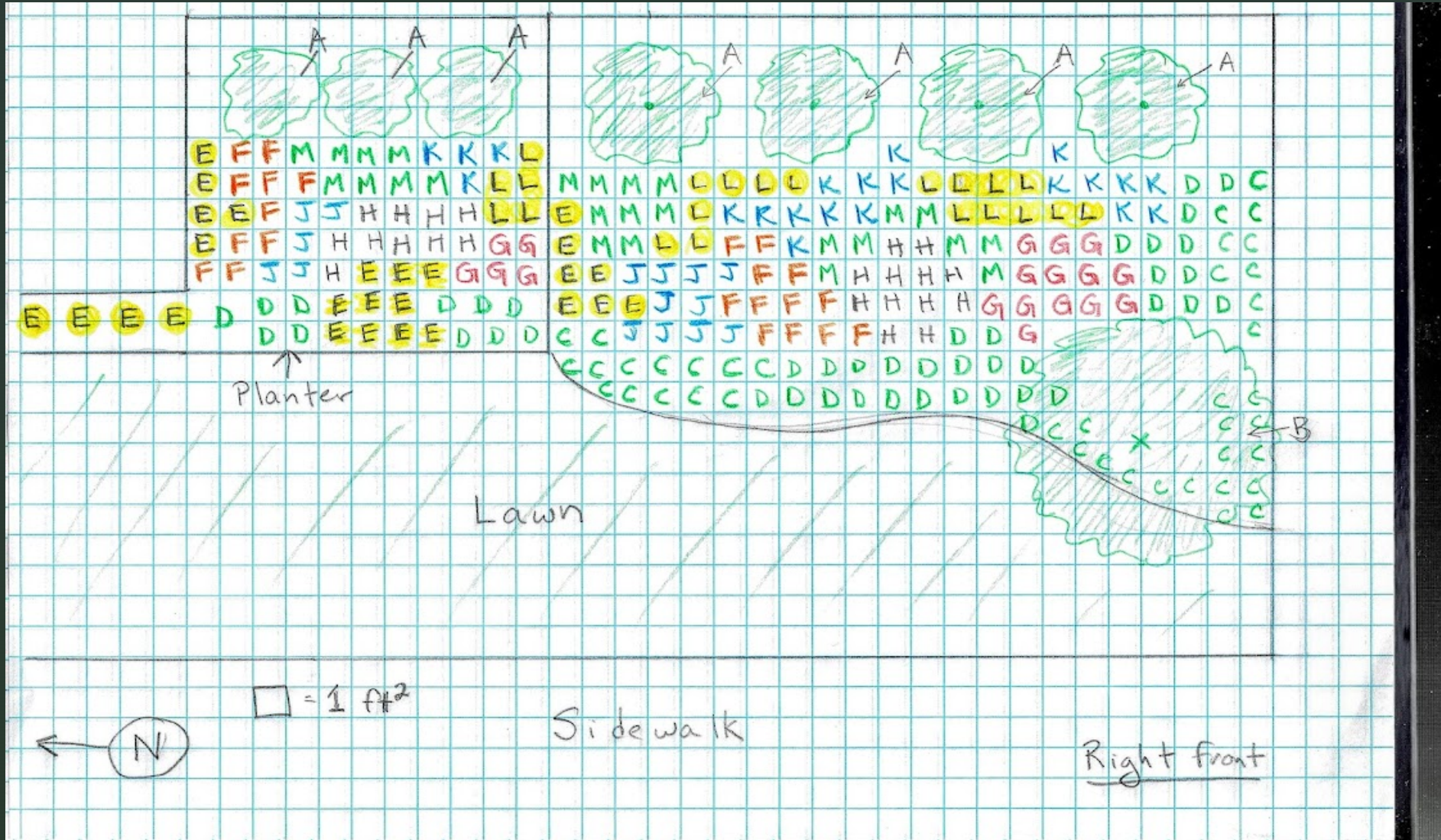
First-year growth of a pollinator garden:
mid-April, early June and early October



Planting plan: north



Planting plan: south



Species	Symbol on plan	Type of plant	Use in garden	Description/notes	Height	Bloom time	Bloom color	Number needed
<i>Kalmia latifolia</i> /mountain laurel	A	Evergreen shrub	Foundation plant, screen	Evergreen, spring blooming, hardy. Choose tall cultivars or the species to screen AC equipment, smaller cultivars in front of windows	8-12' at maturity	May-June	Pink and white, some deep pinks and reds available	7
<i>Cercis canadensis</i> /redbud OR <i>Amelanchier laevis</i> / Allegheny serviceberry OR <i>Amelanchier canadensis</i> / shadblo	B	Small tree	Anchor tree (one on each side of building)	Small native trees with showy spring flowers; Amelanchiers (serviceberries) bear fruits in June that birds adore. Avoid redbud cultivars with red or purple leaves.	Up to 25'	April	Redbud: pink; serviceberry: white	2
<i>Packera aurea</i> /golden groundsel	C	Perennial	Border or perennial garden, planters	Evergreen groundcover	6"	April-May	Yellow	72
<i>Carex eburnea</i> /ivory sedge	D	Grasslike plant	Border or perennial garden, planters	Low-growing sedge, delicate-looking but drought resistant	6-12"	May-June	Green/inconspicuous	72
<i>Coreopsis verticillata</i> /whorled tickseed OR <i>C. lanceolata</i> / lanceleaf coreopsis	E	Perennial	Perennial garden, planters	Tough but very floriferous	24"	June-September	Yellow	40
<i>Asclepias tuberosa</i> /orange butterfly weed	F	Perennial	Perennial garden	The best milkweed for dry soils; very easy to grow	2-3'	June-August	Orange	36
<i>Aquilegia canadensis</i> /native columbine	G	Perennial	Perennial garden	Evergreen foliage, showy flowers	24"	April-June	Red and yellow	30
<i>Penstemon digitalis</i> /beardtongue	H	Perennial	Perennial garden	Showy but very hardy flowering perennial	2-3'	May-July	White	36
<i>Monarda fistulosa</i> / beebalm OR <i>Agastache foeniculum</i> (lavender hyssop)	J	Perennial	Perennial garden	Very easy to grow, less aggressive than other native mints, excellent pollinator plant	2-4'	May-July (Monarda); July-September (Agastache)	Pink or lavender (Monarda); lavender (Agastache)	24
<i>Symphotrichum laeve</i> (Aster laevis)/smooth aster	K	Perennial	Perennial garden	As aster that doesn't get too tall	Up to 4'	August-October	Blue	30
<i>Solidago flexicaulis</i> / crooked stem goldenrod OR <i>Solidago caesia</i> / blue-stem goldenrod	L	Perennial	Perennial garden	Classic fall-blooming companion to asters	2-3'	August-October	Yellow	30
<i>Schizachyrium scoparium</i> /little bluestem	M	Grass	Perennial garden	Beautiful and extremely hardy native grass, beautiful fall color	Up to 4'	August-October	Golden	40

Plants Use

