

# RESIDENTIAL GRID-TIE SOLAR SYSTEM

## LET THE SUNSHINE BRIGHTEN UP YOUR LIVES



Trusted, dependable and long-lasting systems



Hassle free quick  
installation



Rapid life cycle  
service support



Green power,  
clean power

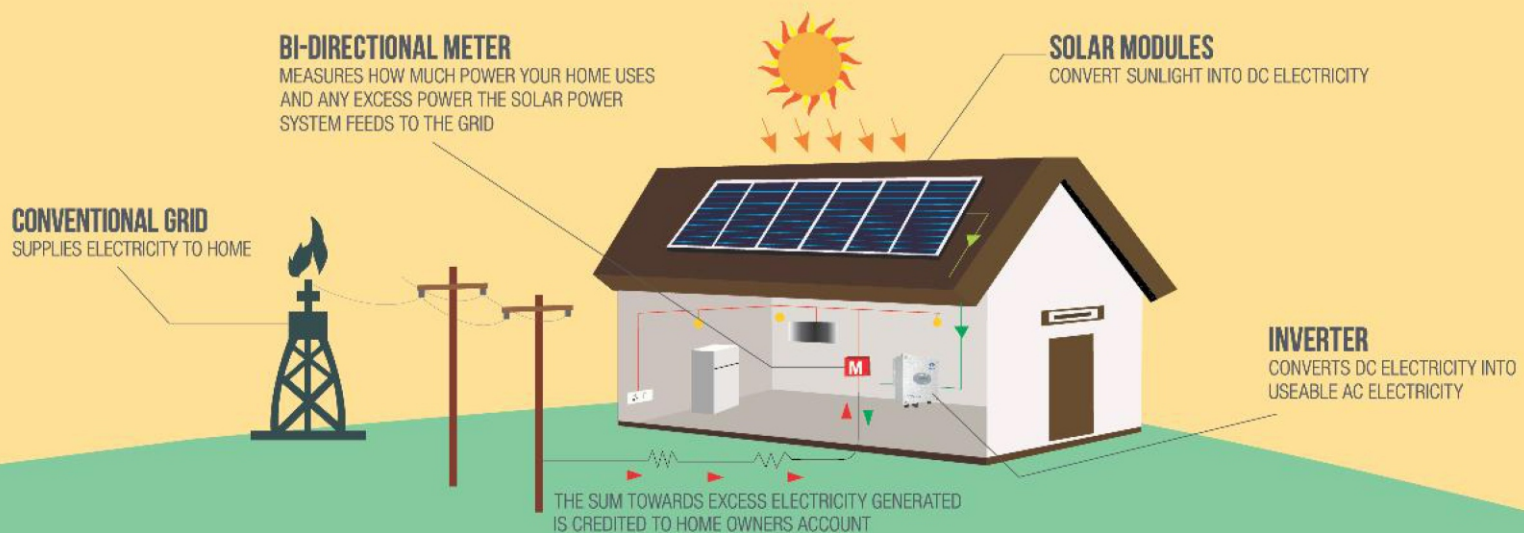


Maintenance free  
system





## HOW SOLAR GRID-TIE SYSTEM WORKS?



### Features

- High efficiency Maximum Power Point Tracking (MPPT) based inverter for maximum output
- Remote monitoring communication interface available (optional)
- Digital display for easy readability
- Active fault monitoring unit for safe operations

### Benefits

- Cut down on your electricity bills
- Utilize idle rooftop space
- Sell excess power back to grid
- Hedge against ever increasing electricity tariffs
- Trusted, dependable and long lasting system
- Green energy, clean energy

### Components

- Solar array ranging from 1000 to 10,000 Wp
- Safe and secure inverter ranging from 1 kVA to 10 kVA
- Hot dip galvanized mounting structure
- Customized solutions available

## Five Powerful Reasons to Choose **TATA POWER SOLAROOF**



**RANKED NO.1**  
ROOFTOP SOLAR  
BRAND FOR  
6 YEARS IN A ROW



OVER 30 YEARS OF  
EXPERTISE, TATA QUALITY  
AND ENGINEERING PROVIDES  
HIGHEST GENERATION  
FROM SOLAR



LIFETIME SERVICE  
AND POST-SALES  
SUPPORT



ZERO  
COMPROMISE  
POLICY TO  
SAFETY



COMPLETE ENERGY  
SOLUTIONS WITH  
EASY FINANCE OPTIONS

To know more about our range of solar solutions

Call Toll Free 1800 419 8777 or visit [www.tatapowersolar.com](http://www.tatapowersolar.com)

Channel Partner  
INFIRENCON ENERGY PVT LTD  
6, Kithira Apartments, Chitrangan Society, Savarkar  
Nagar, Gangapur Road, Nashik - 422013  
Mob: 7767091409, e-mail: [vida@infirencon.com](mailto:vida@infirencon.com)  
web: [www.infirencon.com](http://www.infirencon.com)