

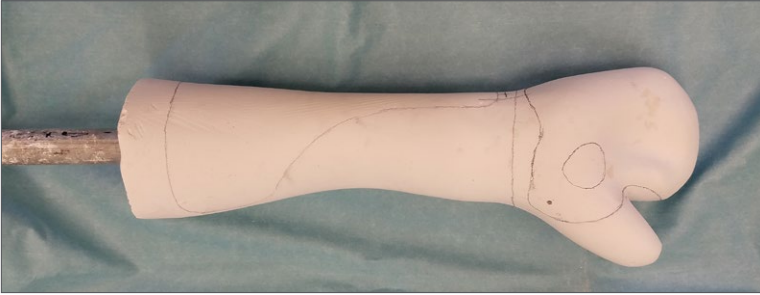


Partial Hand SOLUTIONS, LLC

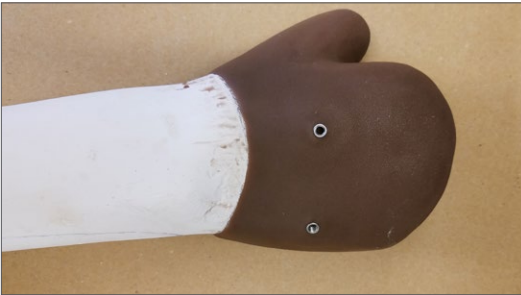


Fabrication Instructions
Full M-Finger/M-Thumb

Fabrication



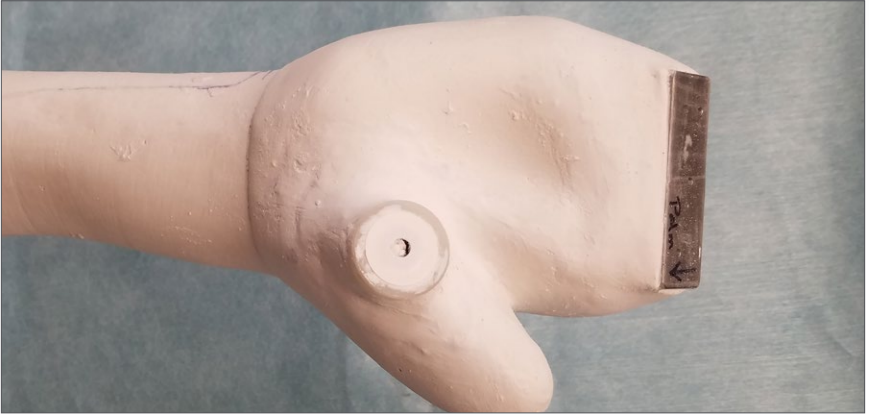
1. Modify model



2. Fabricate inner socket (silicone interface is preferred method)



3. Duplicate model with silicone interface and use new plaster model for lamination to preserve silicone interface



4. Identify location of mounting plate base and build up the mounting plate base with plaster and smooth into model. Make sure to check alignment of the fingers.

5. If using an M-Thumb, place the thumb mounting dummy in the desired location and screw into model with provided self-tapping screw (washer side out)



6. Identify location for Gaffney joint (typically placed on ulnar side) and plaster in place and set with provided nails.



7. Apply PVA bag over mold and laminate. Pre-Preg layup is preferred method.



8. Break out plaster and trim to desired trimlines.



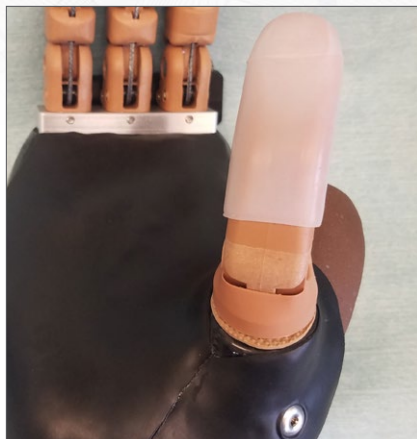
9. Remove M-Thumb dummy and Drill 3/16 hole in center.



10. Install thumb dummy. Use provided screws to secure thumb dummy to lamination. Nut and washer on dummy should be facing lamination



11. Install rubber washer and thumb base



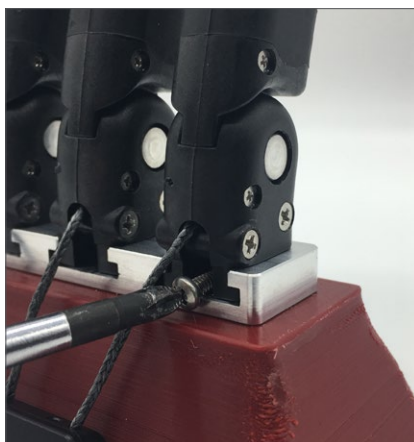
- 12.** Install thumb tip with supplied phillips head screw and lock nut



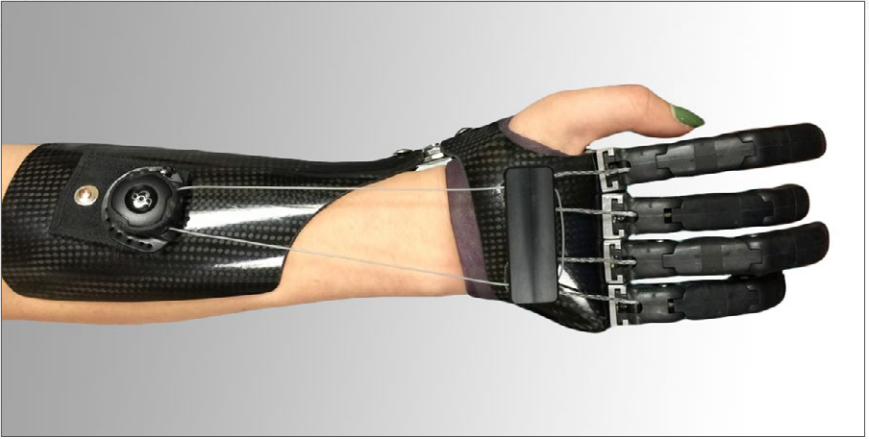
- 13.** Place M-finger mount bracket on the inside of lamination. Mark holes, remove bracket and drill out with 1/8 inch bit



- 14.** Install mounting plate.



- 15.** Install fingers using supplied screws



- 16.** Install BOA cable connector or preferred cable attachment method in proper location as shown above. BOA should set while patient goes through range of motion to insure optimal location.
Attach forearm strap if necessary for additional support

M-Fingers are distributed by:



800-728-7950 | 586-294-7950

27955 College Park Drive, Warren, MI 48088

TECHNICAL ASSISTANCE/ EMERGENCY SERVICE 24-7-365

College Park's regular office hours are Monday thru Friday, 8:30 am - 5:30 pm (EST). After hours, an emergency Technical Service number is available to contact a College Park representative.



Partial Hand SOLUTIONS, LLC



Partial Hand Solutions
86 Ladyslipper Lane
Southington, CT USA 06489
+1 (860) 538-5532



EMERGO EUROPE
Prinsessegracht 20,
2514 AP
The Hague, Netherlands

MADE IN THE USA

703 INS PHS FAB MF 171120

