

# TITAN Partial

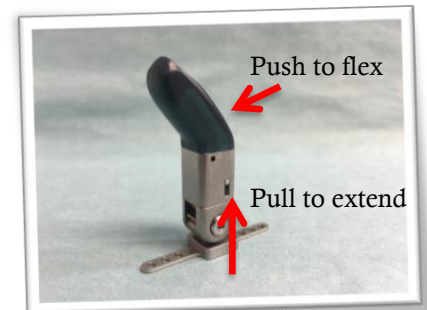
## Instructions for use



1. If using a silicone socket, apply a small amount of hand sanitizer to limb and push on TITAN Partial socket to limb.



2. To flex finger, apply pressure to back side of fingertip and push to desired location. To extend finger back, pull on fingertip to dislocate pin and re-position to desired location.



3. New users should start with a wearing schedule and ease in to a full day of use.



4. Clean daily with anti-bacterial wipes



PARTIAL HAND SOLUTIONS  
86 Ladyslipper Lane  
Southington CT, USA 06489  
+1 (860) 538-5532

EC

REP

EMERGO EUROPE  
Prinsessegracht 20  
2514 AP The Hague  
The Netherlands

