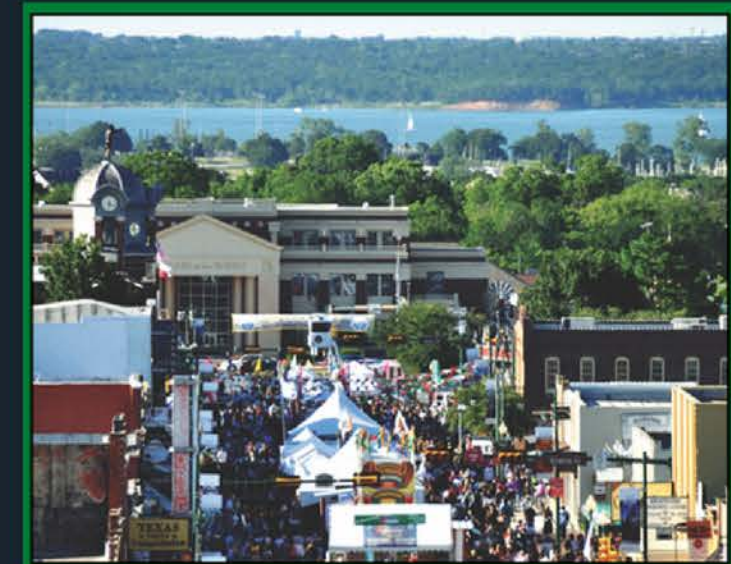
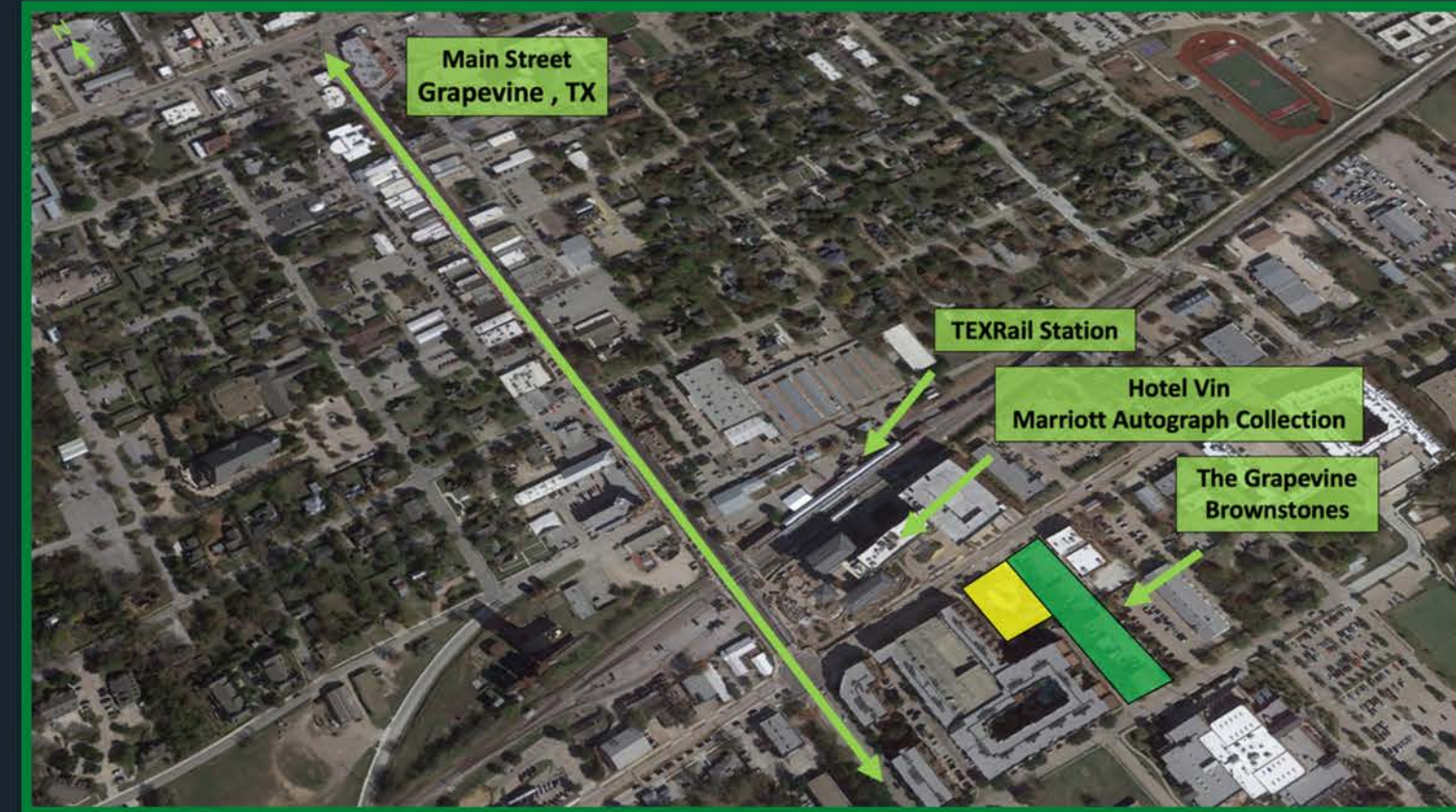
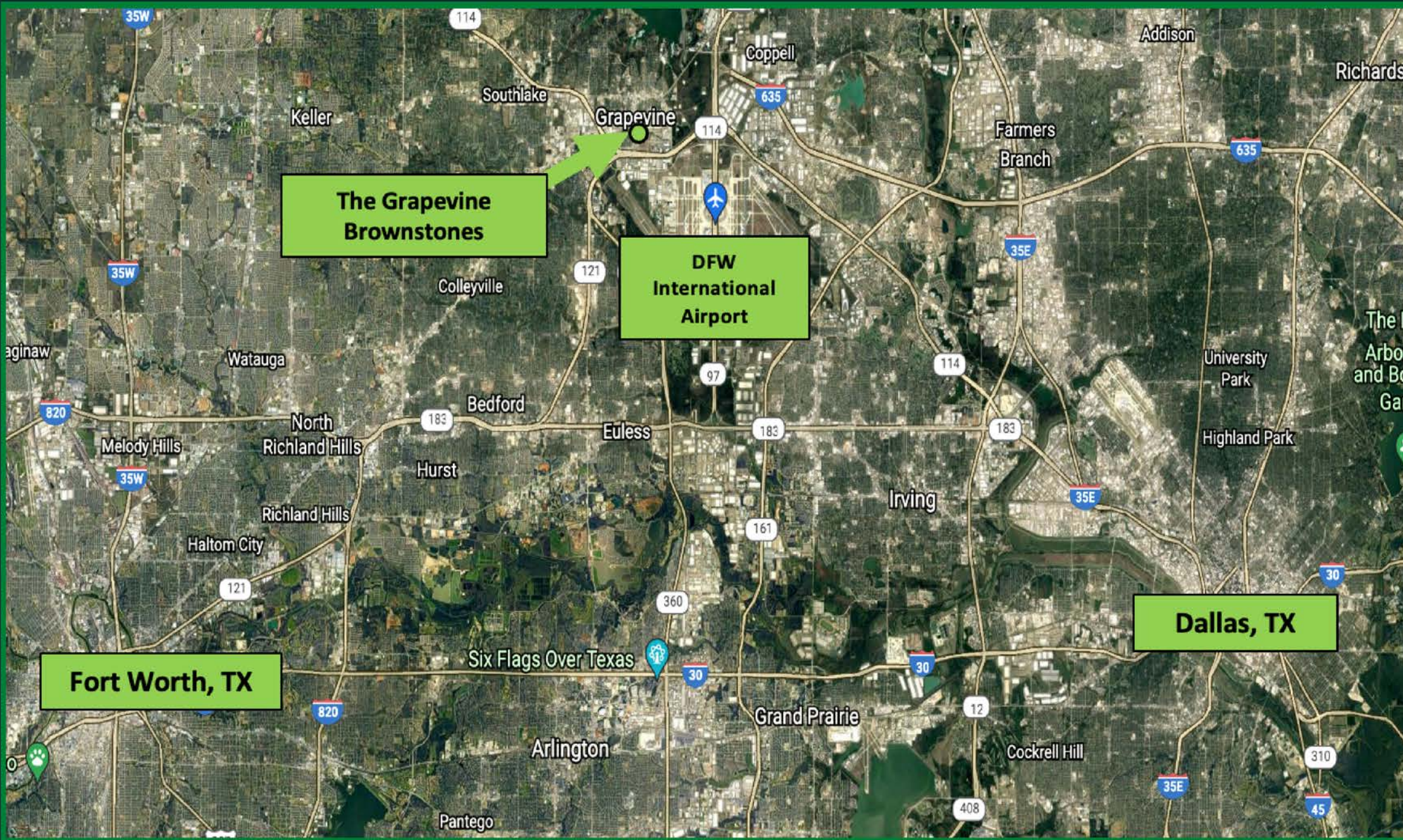




## The Grapevine Brownstones – Phase 2

Luxury residences within a two-minute walk of offices, stores, restaurants, and theaters on Main Street Grapevine. Extending east from Main Street, the property is comprised of 30 units – ranging from 2,700 to 3,100 SF – fronting the Hotel Vin, Harvest Hall, and the Grapevine Main Station.

# Location, Location, Location



Premier luxury residences located in the heart of historic downtown Grapevine. Just steps from Hotel Vin and Harvest Hall, the Brownstones are located just five minutes DFW Airport and easy transportation to Dallas and Fort Worth, Texas.



① **Dallas Rd Front**  
1/8" = 1'-0"

**GRAPEVINE BROWNSTONES**

**Dallas Rd Front Elevation**

SCALE: As indicated

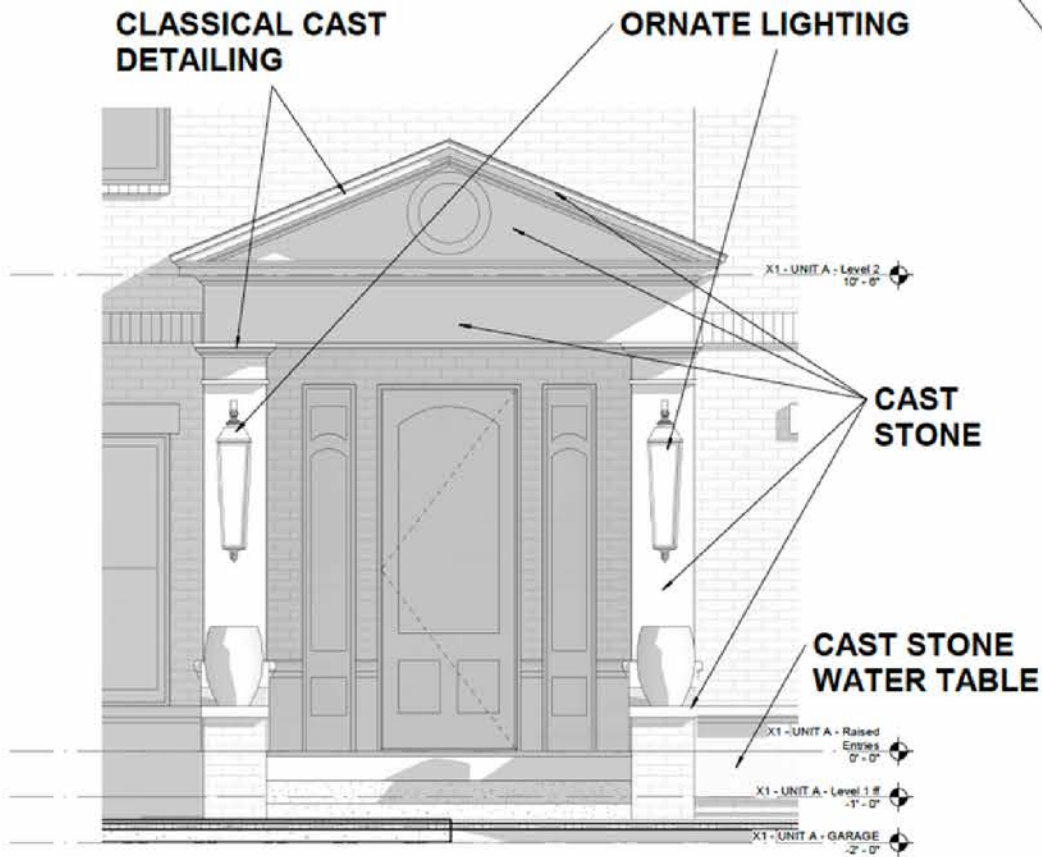
**SCHAUMBURG**  
ARCHITECTS

8430 BLUE HERON COURT, FORT WORTH, TEXAS 76108  
PHONE (817) 336-7077 FAX (817) 336-7776

COPYRIGHT 2021 SCHAUMBURG ARCHITECTS

12-3-21

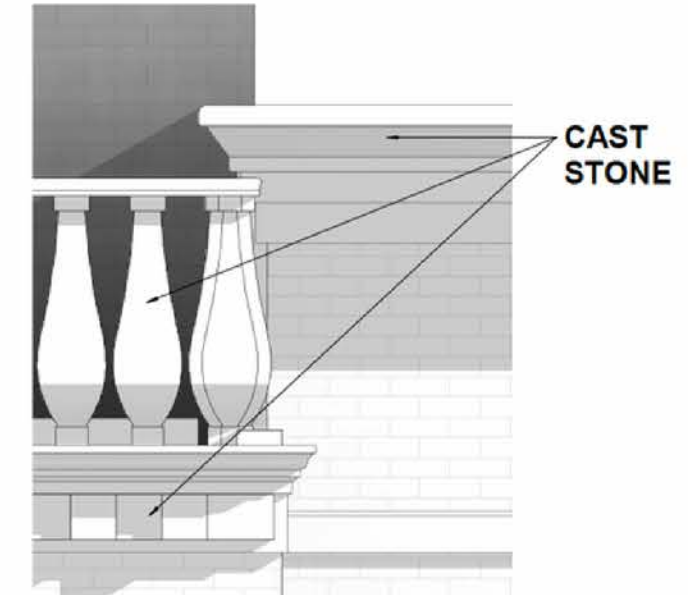
STRONG CAST STONE AND BRICK HORIZONTAL BANDING FOR BUILDING DESIGN ORGANIZATION.



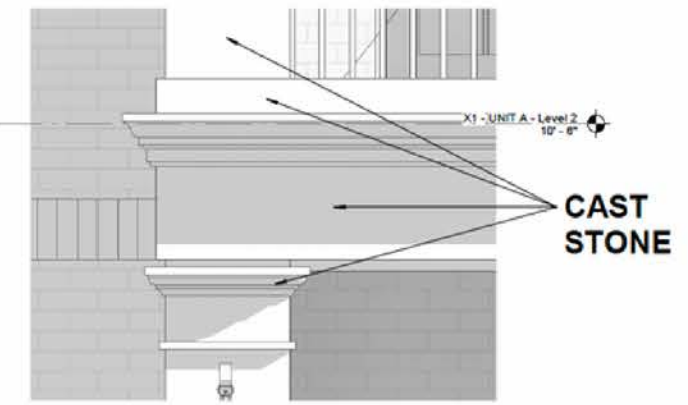
3 **Cast Stone Entry Elements**  
1/2" = 1'-0"



2 **Details Study**  
NTS



4 **Cast Stone Balusters/Parapet Details**  
1" = 1'-0"



5 **Cast Stone Balcony Details**  
1" = 1'-0"



1 **Dallas Rd Front**  
1/8" = 1'-0"

**GRAPEVINE BROWNSTONES**

**Dallas Rd Front Elevation**

SCALE: As indicated

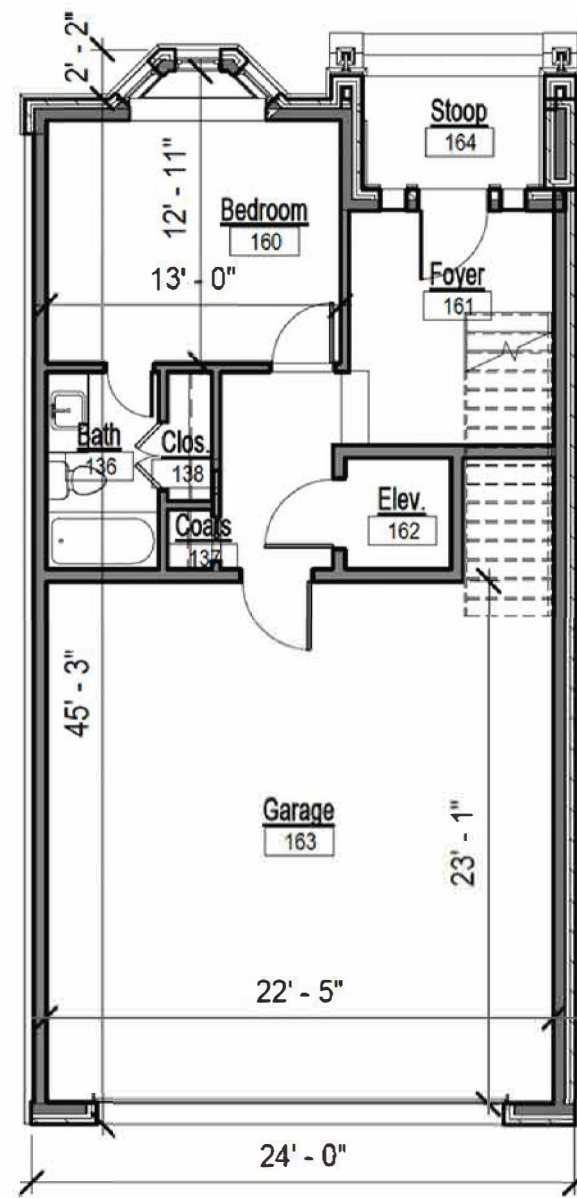
**SCHAUMBURG ARCHITECTS**

9430 BLUE HERON COURT, FORT WORTH, TEXAS 76108  
PHONE (817) 336-7077 FAX (817) 336-7776

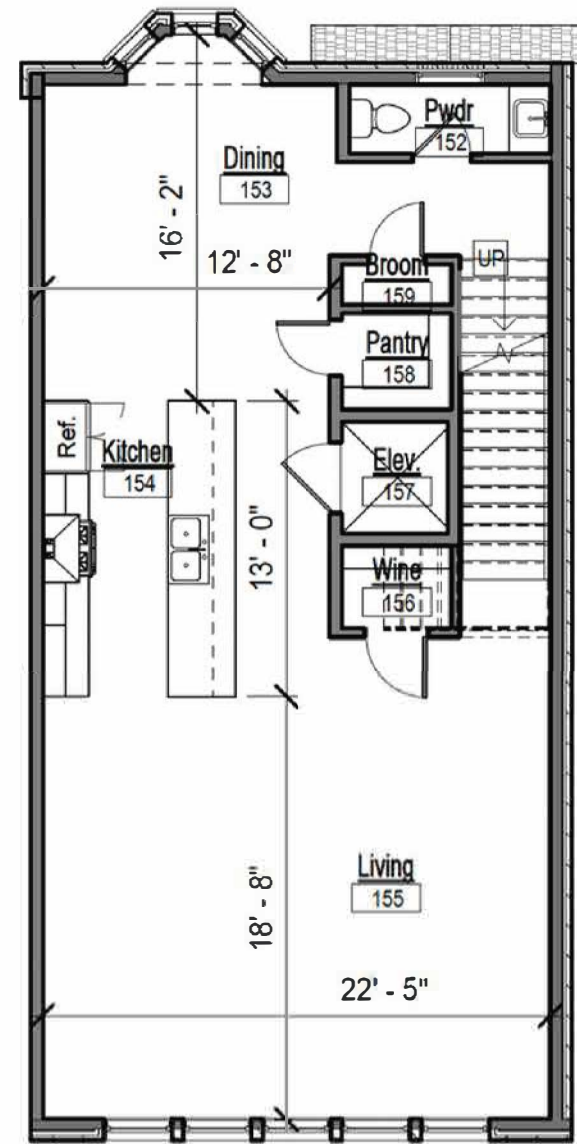
12-9-21

COPYRIGHT 2021 SCHAUMBURG ARCHITECTS

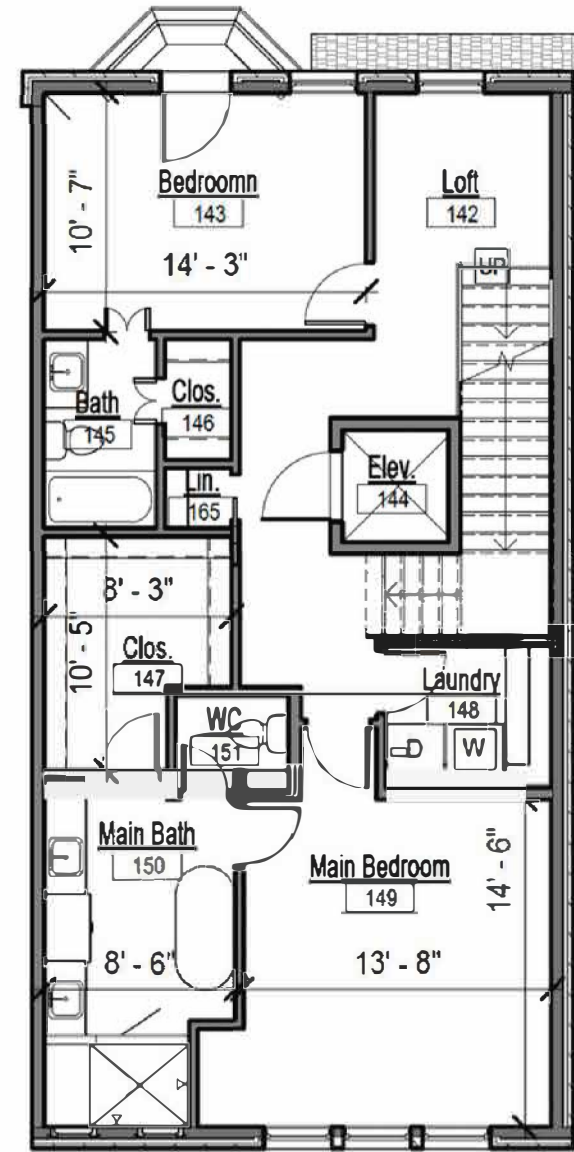
# Residences: 111, 113, 114, 116, 123, 125, 126, 128



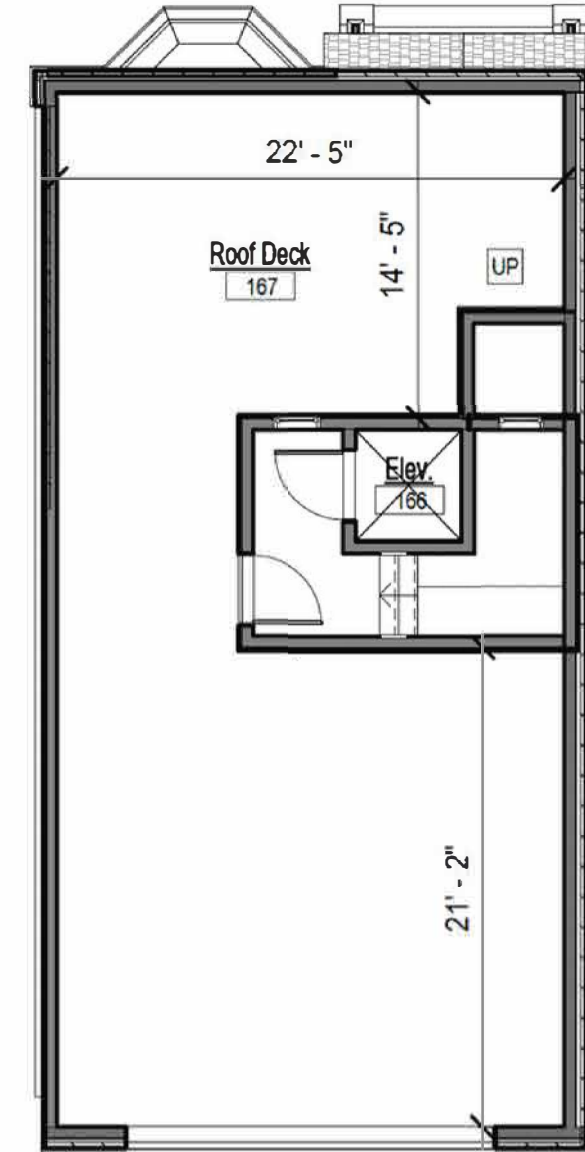
**1 Level 1**  
1/8" = 1'-0"



**2 Level 2**  
1/8" = 1'-0"



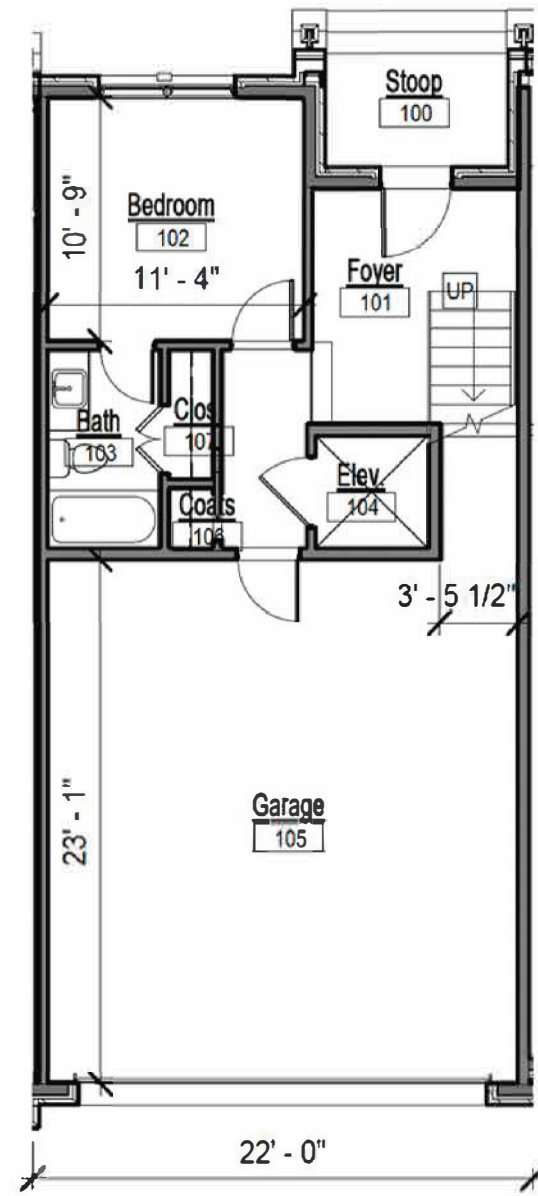
**3 Level 3**  
1/8" = 1'-0"



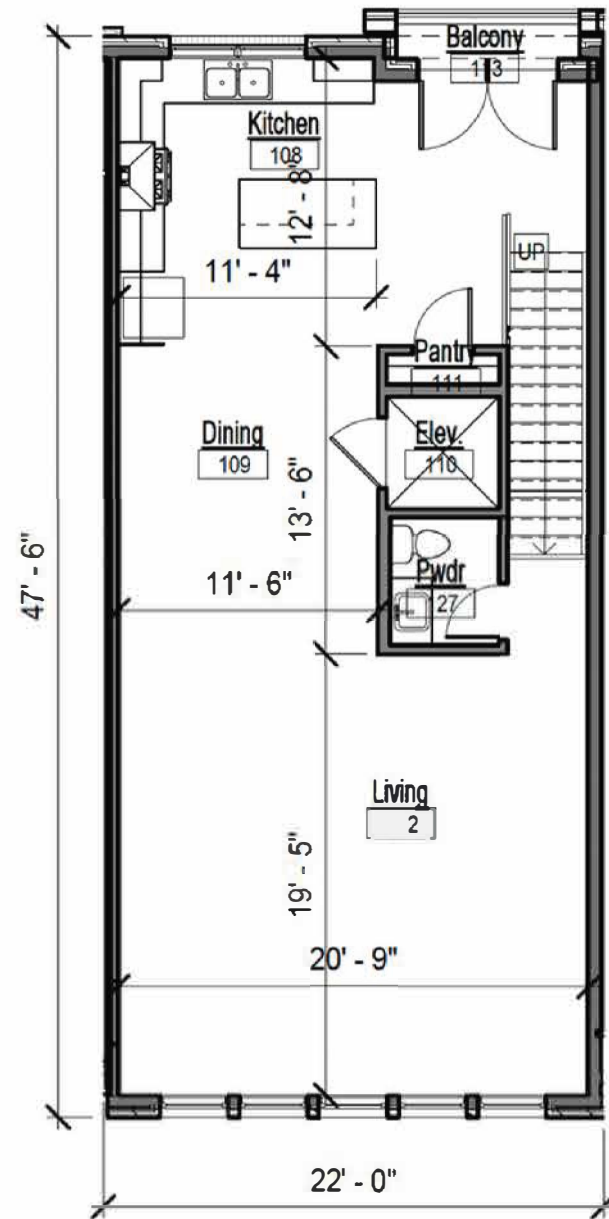
**4 Cupola**  
1/8" = 1'-0"

AREA SCHEDULE	
A/C LEVEL 1 =	458 SF
A/C LEVEL 2 =	1066 SF
A/C LEVEL 3 =	1066 SF
A/C CUPOLA =	55 SF
<b>TOT. A/C =</b>	<b>2645 SF</b>

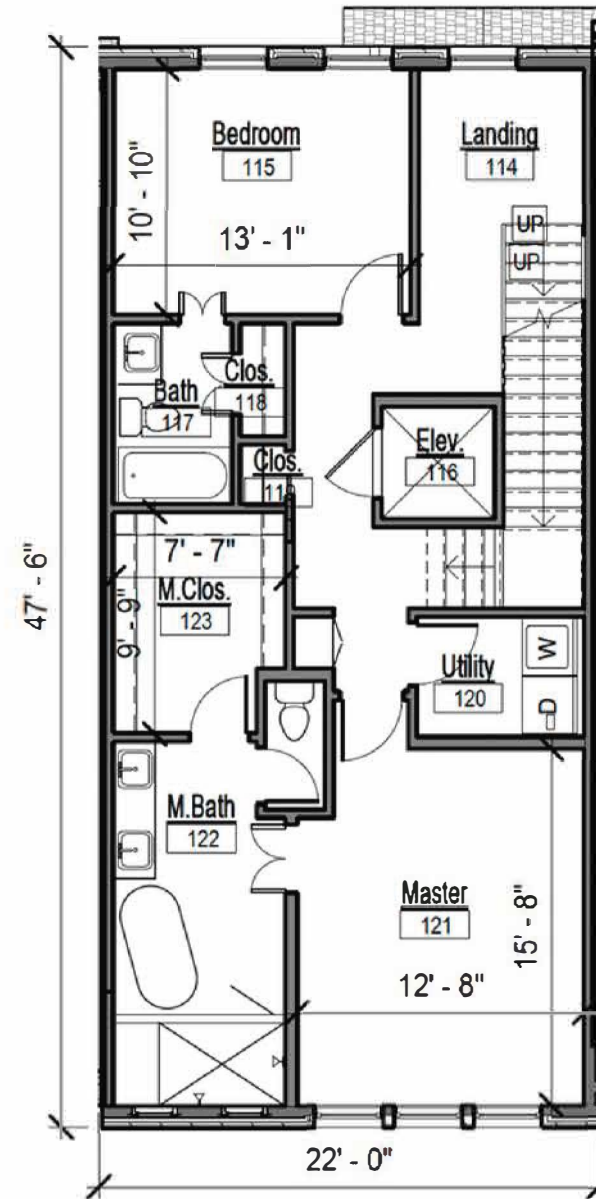
# Residences: 112, 115, 124, 127



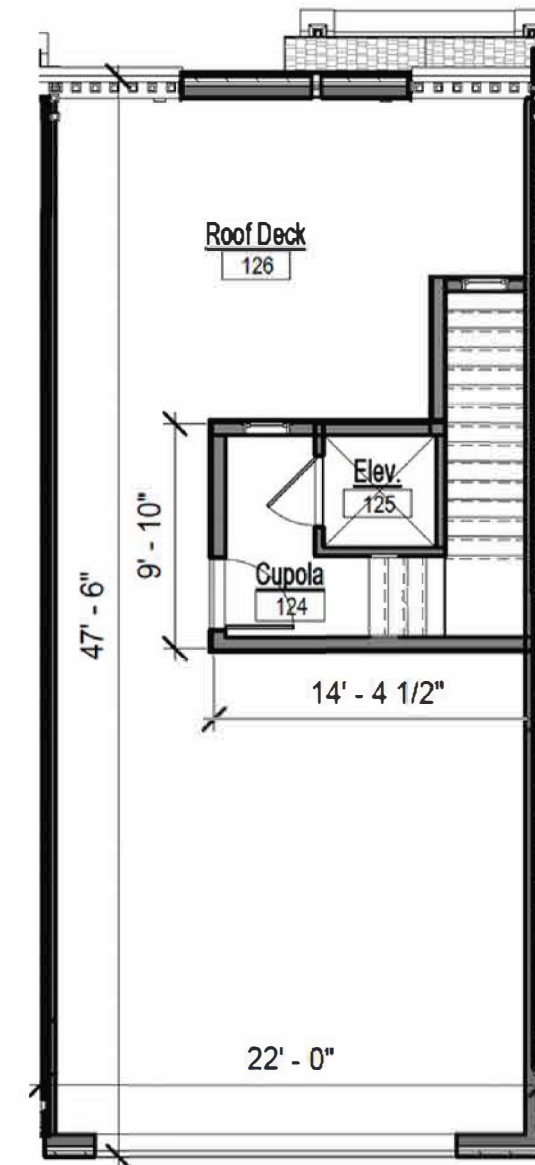
① **Level 1**  
1/8" = 1'-0"



② **Level 2**  
1/8" = 1'-0"



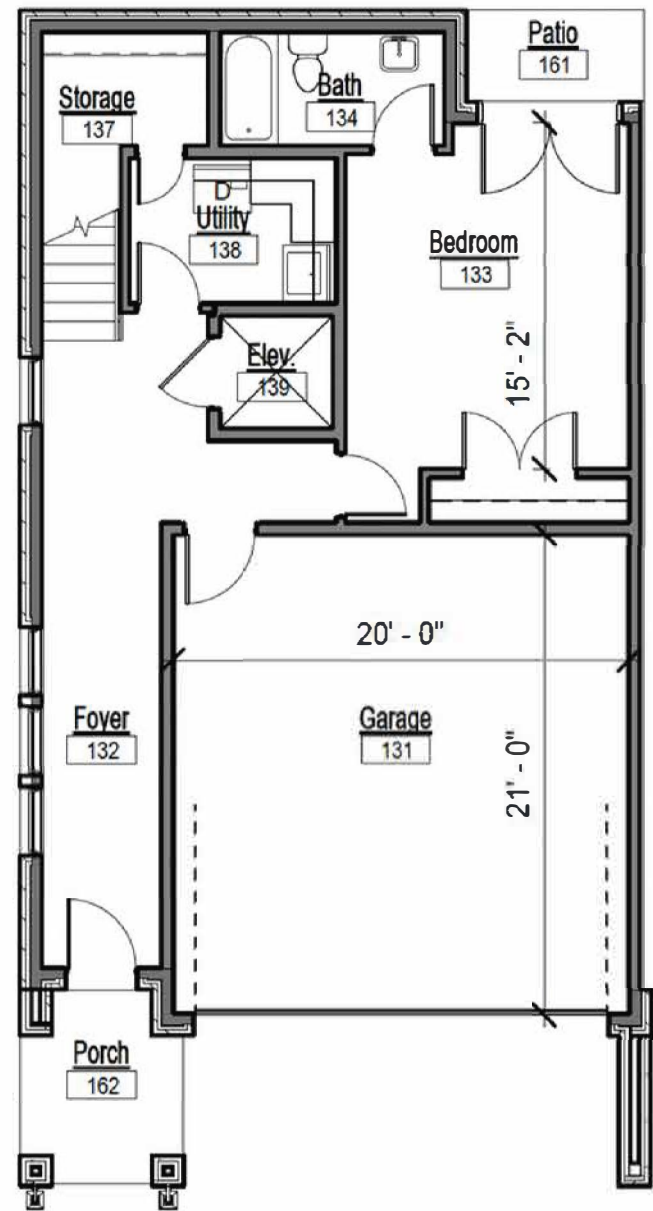
③ **Level 3**  
1/8" = 1'-0"



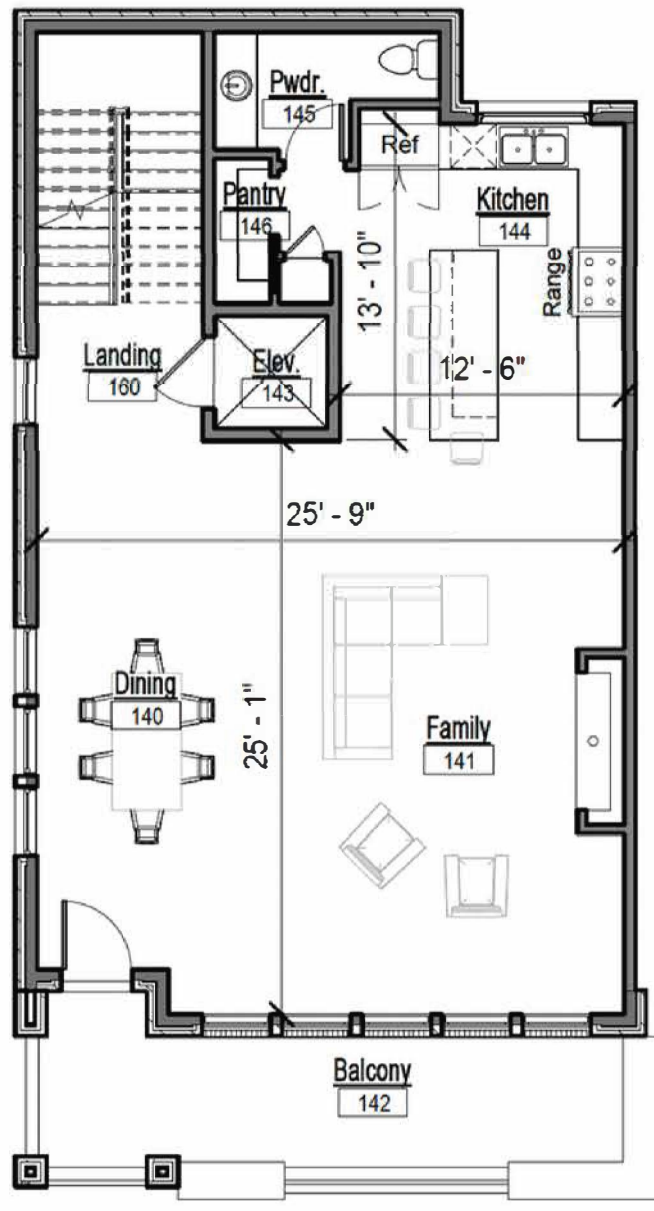
④ **Cupola**  
1/8" = 1'-0"

AREA SCHEDULE	
A/C LEVEL 1 =	409 SF
A/C LEVEL 2 =	1011 SF
A/C LEVEL 3 =	1020 SF
A/C CUPOLA =	116 SF
TOT. A/C =	2556 SF

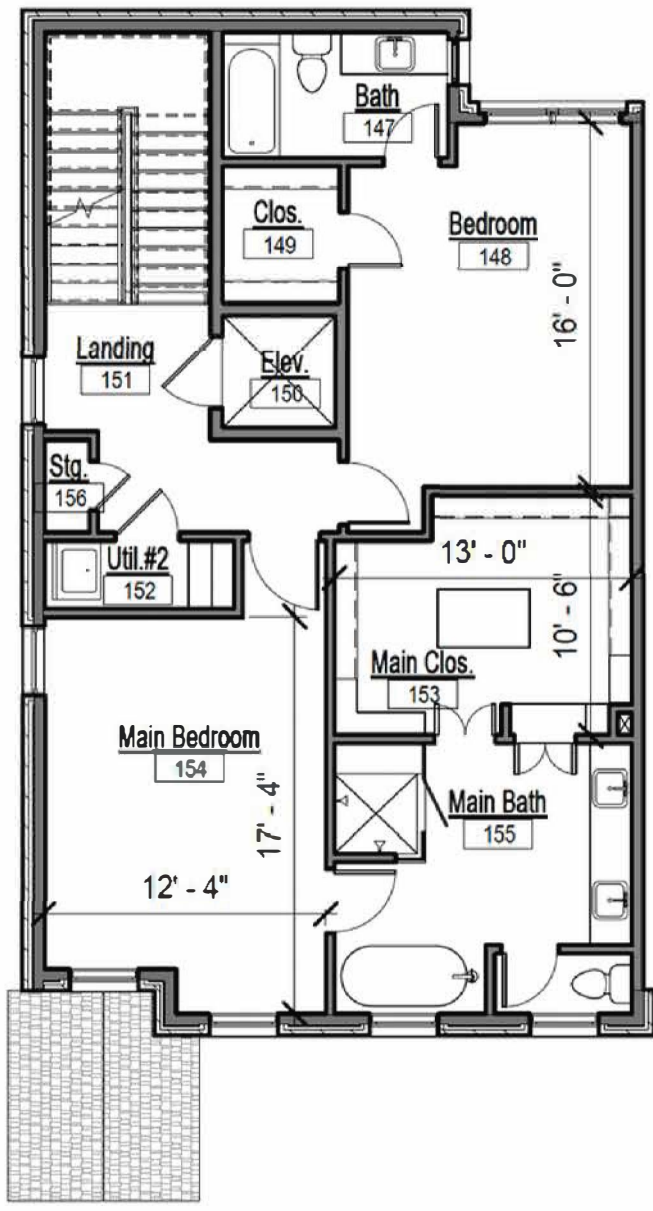
# Residences: 117 - 122



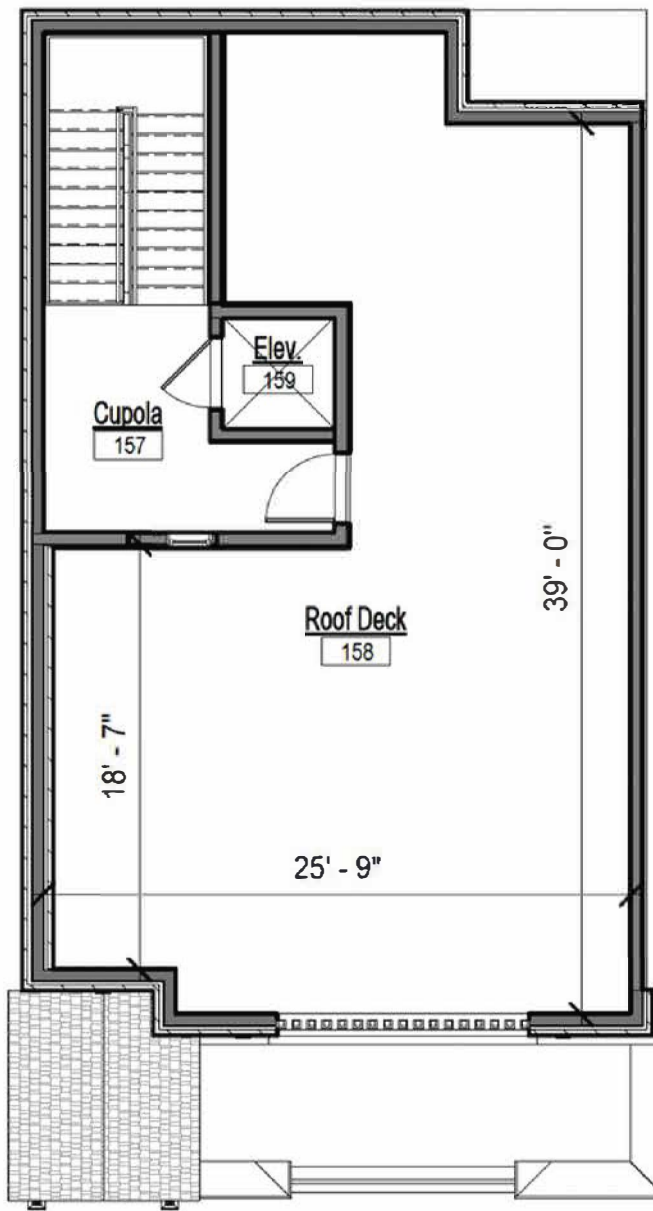
**1 Level 1**  
1/8" = 1'-0"



**3 Level 2**  
1/8" = 1'-0"



**2 Level 3**  
1/8" = 1'-0"



**4 Cupola**  
1/8" = 1'-0"

AREA SCHEDULE	
A/C LEVEL 1 =	727 sf
A/C LEVEL 2 =	1070 sf
A/C LEVEL 3 =	1050 sf
A/C CUPOLA =	108 sf
TOT. A/C =	2955 sf