

TheResidencesWestPalmBeach.com  
(561) 402-8997  
1717 N Flagler Drive  
West Palm Beach, FL 33407



THE RITZ - CARLTON  
RESIDENCES

WEST PALM BEACH



Sales by  Douglas Elliman  
Development Marketing

There are various methods for calculating the square footage of a Unit and depending on the method of calculation, the quoted square footage of a Unit in advertising materials may vary from the square footage of a Unit as described in the Prospectus and the Declaration. The dimensions of the Unit shown have been calculated from the exterior boundaries of the exterior walls to the centerline of interior demising walls, including common elements such as structural walls and other interior structural components of the building which method results in a calculation of square footage greater than if measured in other customary methods, such as from finished painted surface to finished painted surface as an example. All dimensions are approximate and may vary with actual construction. All floor plans are subject to change. The furnishings and décor illustrated are not placed in a manner intended to guaranty a particular use of the space and are not included with the purchase of the Unit. Consult the Developer's Prospectus for information regarding terms, conditions, the calculation of the Unit dimensions and to learn what is included with purchase. Marriott International, Inc. The Related Group, and BH Group are Licensors of the Developer. 1717 N Flagler Drive Venture, LLC Ritz-Carlton® is the registered mark of Marriott International, Inc. 2024© 1717 N Flagler Drive Venture, LLC.

The most prestigious place *to call home.*

FLOOR PLAN RESIDENCE D1



THE RITZ-CARLTON  
RESIDENCES

WEST PALM BEACH

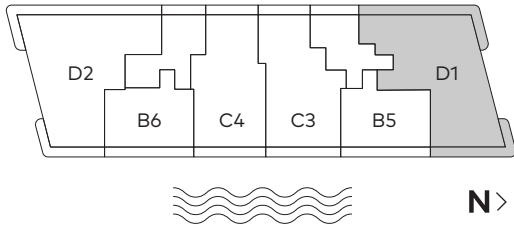
Residence D1

4 Bedrooms  
4 Bathrooms  
1 Powder Room

INTERIOR  
3,244 SF

EXTERIOR  
897 SF

TOTAL AREA  
4,141 SF



TheResidencesWestPalmBeach.com | (561) 402-8997 | 1717 N Flagler Drive West Palm Beach, FL 33407

There are various methods for calculating the square footage of a Unit and depending on the method of calculation, the quoted square footage of a Unit in advertising materials may vary from the square footage of a Unit as described in the Prospectus and the Declaration. The dimensions of the Unit shown have been calculated from the exterior boundaries of the exterior walls to the centerline of interior demising walls, including common elements such as structural walls and other interior structural components of the building which method results in a calculation of square footage greater than if measured in other customary methods, such as from finished painted surface to finished painted surface as an example. All dimensions are approximate and may vary with actual construction. All floor plans are subject to change. The furnishings and décor illustrated are not placed in a manner intended to guaranty a particular use of the space and are not included with the purchase of the Unit. Consult the Developer's Prospectus for information regarding terms, conditions, the calculation of the Unit dimensions and to learn what is included with purchase. Marriott International, Inc. The Related Group, and BH Group are Licensors of the Developer. 1717 N Flagler Drive Venture, LLC Ritz-Carlton® is the registered mark of Marriott International, Inc. 2024© 1717 N Flagler Drive Venture, LLC.

TheResidencesWestPalmBeach.com  
(561) 402-8997  
1717 N Flagler Drive  
West Palm Beach, FL 33407



THE RITZ - CARLTON  
RESIDENCES  
WEST PALM BEACH



There are various methods for calculating the square footage of a Unit and depending on the method of calculation, the quoted square footage of a Unit in advertising materials may vary from the square footage of a Unit as described in the Prospectus and the Declaration. The dimensions of the Unit shown have been calculated from the exterior boundaries of the exterior walls to the centerline of interior demising walls, including common elements such as structural walls and other interior structural components of the building which method results in a calculation of square footage greater than if measured in other customary methods, such as from finished painted surface to finished painted surface as an example. All dimensions are approximate and may vary with actual construction. All floor plans are subject to change. The furnishings and décor illustrated are not placed in a manner intended to guaranty a particular use of the space and are not included with the purchase of the Unit. Consult the Developer's Prospectus for information regarding terms, conditions, the calculation of the Unit dimensions and to learn what is included with purchase. Marriott International, Inc. The Related Group, and BH Group are Licensors of the Developer. 1717 N Flagler Drive Venture, LLC Ritz-Carlton® is the registered mark of Marriott International, Inc. 2024© 1717 N Flagler Drive Venture, LLC.

The most prestigious place *to call home.*

FLOOR PLAN RESIDENCE B5



THE RITZ-CARLTON  
RESIDENCES

WEST PALM BEACH

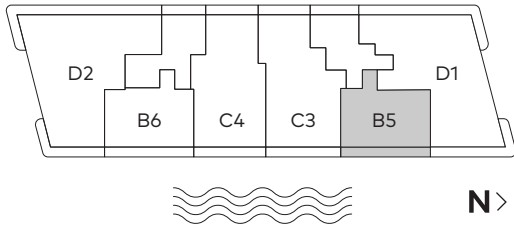
Residence B5

2 Bedrooms  
2 Bathrooms  
1 Powder Room

INTERIOR  
1,532 SF

EXTERIOR  
307 SF

TOTAL AREA  
1,839 SF



TheResidencesWestPalmBeach.com | (561) 402-8997 | 1717 N Flagler Drive West Palm Beach, FL 33407

There are various methods for calculating the square footage of a Unit and depending on the method of calculation, the quoted square footage of a Unit in advertising materials may vary from the square footage of a Unit as described in the Prospectus and the Declaration. The dimensions of the Unit shown have been calculated from the exterior boundaries of the exterior walls to the centerline of interior demising walls, including common elements such as structural walls and other interior structural components of the building which method results in a calculation of square footage greater than if measured in other customary methods, such as from finished painted surface to finished painted surface as an example. All dimensions are approximate and may vary with actual construction. All floor plans are subject to change. The furnishings and décor illustrated are not placed in a manner intended to guaranty a particular use of the space and are not included with the purchase of the Unit. Consult the Developer's Prospectus for information regarding terms, conditions, the calculation of the Unit dimensions and to learn what is included with purchase. Marriott International, Inc. The Related Group, and BH Group are Licensors of the Developer. 1717 N Flagler Drive Venture, LLC Ritz-Carlton® is the registered mark of Marriott International, Inc. 2024© 1717 N Flagler Drive Venture, LLC. ®

TheResidencesWestPalmBeach.com  
(561) 402-8997  
1717 N Flagler Drive  
West Palm Beach, FL 33407



THE RITZ - CARLTON  
RESIDENCES  
WEST PALM BEACH



There are various methods for calculating the square footage of a Unit and depending on the method of calculation, the quoted square footage of a Unit in advertising materials may vary from the square footage of a Unit as described in the Prospectus and the Declaration. The dimensions of the Unit shown have been calculated from the exterior boundaries of the exterior walls to the centerline of interior demising walls, including common elements such as structural walls and other interior structural components of the building which method results in a calculation of square footage greater than if measured in other customary methods, such as from finished painted surface to finished painted surface as an example. All dimensions are approximate and may vary with actual construction. All floor plans are subject to change. The furnishings and décor illustrated are not placed in a manner intended to guaranty a particular use of the space and are not included with the purchase of the Unit. Consult the Developer's Prospectus for information regarding terms, conditions, the calculation of the Unit dimensions and to learn what is included with purchase. Marriott International, Inc. The Related Group, and BH Group are Licensors of the Developer. 1717 N Flagler Drive Venture, LLC Ritz-Carlton® is the registered mark of Marriott International, Inc. 2024© 1717 N Flagler Drive Venture, LLC.

The most prestigious place *to call home.*

FLOOR PLAN RESIDENCE C3



THE RITZ-CARLTON  
RESIDENCES

WEST PALM BEACH

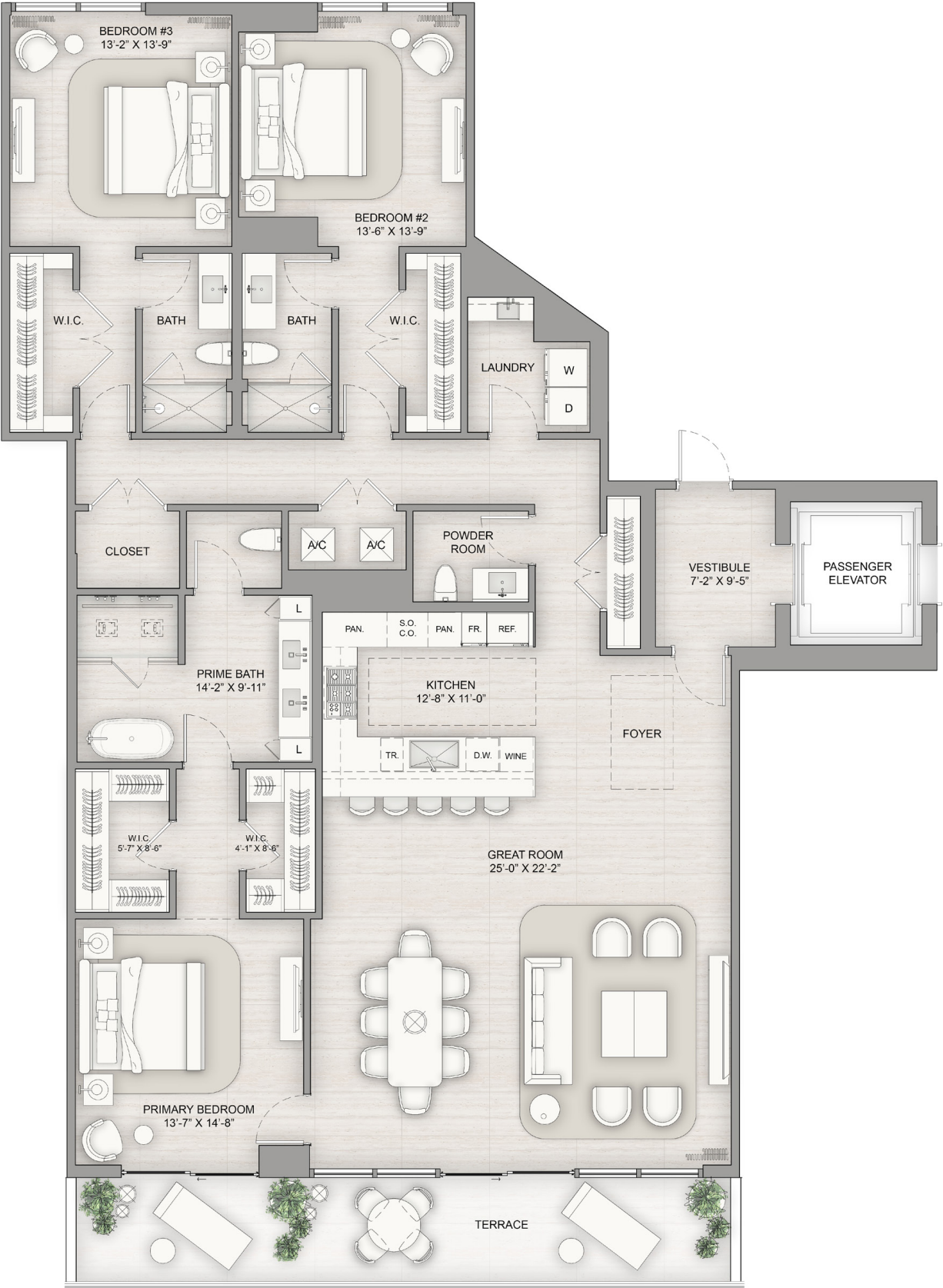
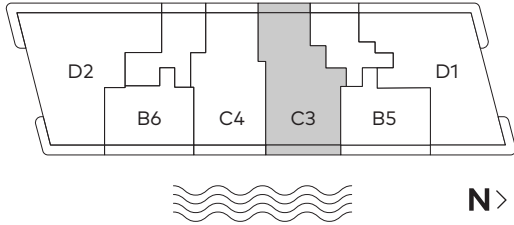
Residence C3

3 Bedrooms  
3 Bathrooms  
1 Powder Room

INTERIOR  
2,541 SF

EXTERIOR  
257 SF

TOTAL AREA  
2,798 SF



TheResidencesWestPalmBeach.com | (561) 402-8997 | 1717 N Flagler Drive West Palm Beach, FL 33407

There are various methods for calculating the square footage of a Unit and depending on the method of calculation, the quoted square footage of a Unit in advertising materials may vary from the square footage of a Unit as described in the Prospectus and the Declaration. The dimensions of the Unit shown have been calculated from the exterior boundaries of the exterior walls to the centerline of interior demising walls, including common elements such as structural walls and other interior structural components of the building which method results in a calculation of square footage greater than if measured in other customary methods, such as from finished painted surface to finished painted surface as an example. All dimensions are approximate and may vary with actual construction. All floor plans are subject to change. The furnishings and décor illustrated are not placed in a manner intended to guaranty a particular use of the space and are not included with the purchase of the Unit. Consult the Developer's Prospectus for information regarding terms, conditions, the calculation of the Unit dimensions and to learn what is included with purchase. Marriott International, Inc. The Related Group, and BH Group are Licensors of the Developer. 1717 N Flagler Drive Venture, LLC Ritz-Carlton® is the registered mark of Marriott International, Inc. 2024© 1717 N Flagler Drive Venture, LLC.

TheResidencesWestPalmBeach.com  
(561) 402-8997  
1717 N Flagler Drive  
West Palm Beach, FL 33407



THE RITZ - CARLTON  
RESIDENCES  
WEST PALM BEACH



There are various methods for calculating the square footage of a Unit and depending on the method of calculation, the quoted square footage of a Unit in advertising materials may vary from the square footage of a Unit as described in the Prospectus and the Declaration. The dimensions of the Unit shown have been calculated from the exterior boundaries of the exterior walls to the centerline of interior demising walls, including common elements such as structural walls and other interior structural components of the building which method results in a calculation of square footage greater than if measured in other customary methods, such as from finished painted surface to finished painted surface as an example. All dimensions are approximate and may vary with actual construction. All floor plans are subject to change. The furnishings and décor illustrated are not placed in a manner intended to guaranty a particular use of the space and are not included with the purchase of the Unit. Consult the Developer's Prospectus for information regarding terms, conditions, the calculation of the Unit dimensions and to learn what is included with purchase. Marriott International, Inc. The Related Group, and BH Group are Licensors of the Developer. 1717 N Flagler Drive Venture, LLC Ritz-Carlton® is the registered mark of Marriott International, Inc. 2024© 1717 N Flagler Drive Venture, LLC.

The most prestigious place *to call home.*

FLOOR PLAN RESIDENCE C4



THE RITZ-CARLTON  
RESIDENCES

WEST PALM BEACH

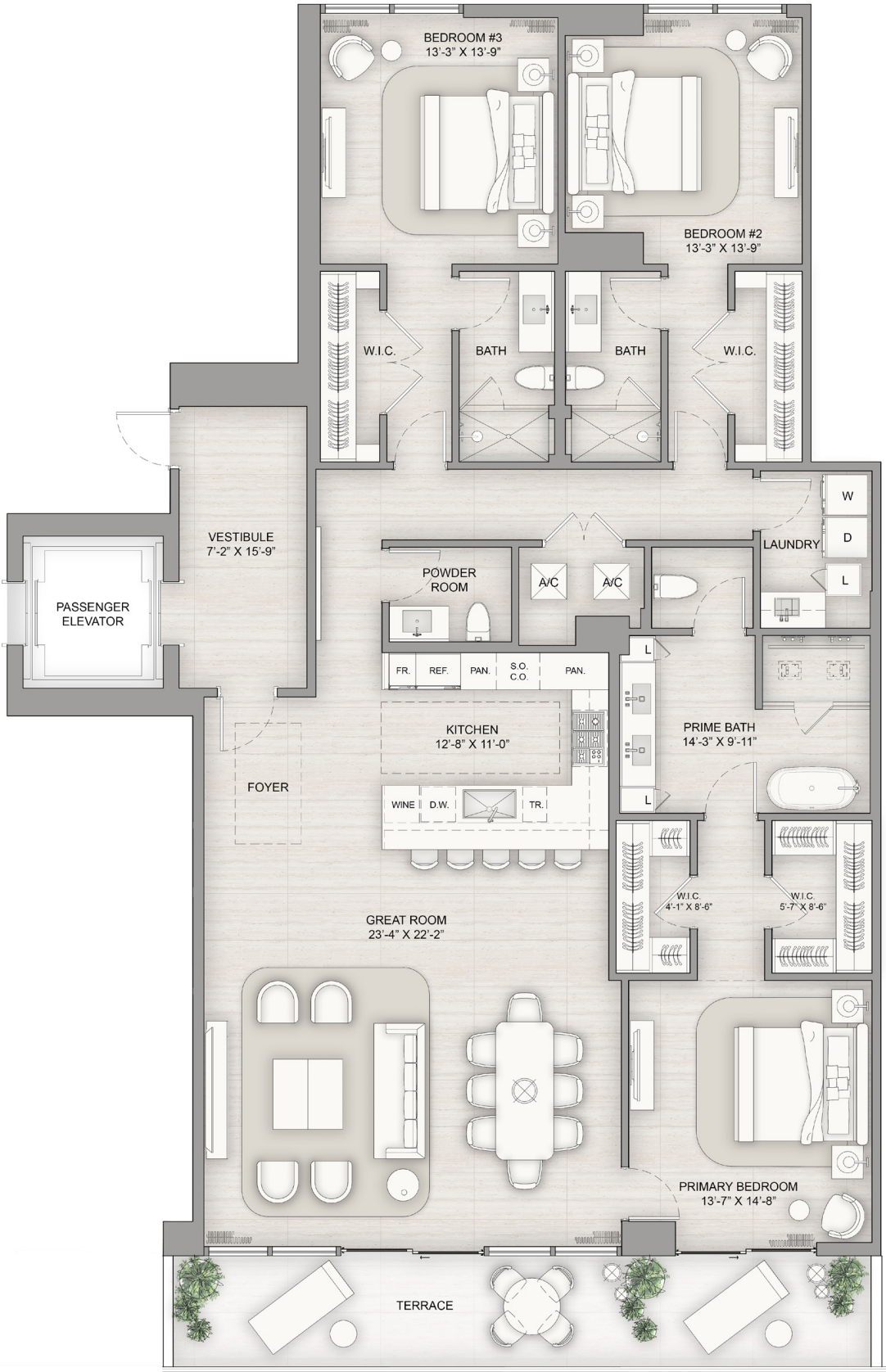
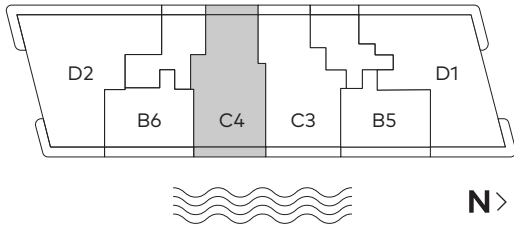
Residence C4

3 Bedrooms  
3 Bathrooms  
1 Powder Room

INTERIOR  
2,449 SF

EXTERIOR  
257 SF

TOTAL AREA  
2,706 SF



TheResidencesWestPalmBeach.com | (561) 402-8997 | 1717 N Flagler Drive West Palm Beach, FL 33407

There are various methods for calculating the square footage of a Unit and depending on the method of calculation, the quoted square footage of a Unit in advertising materials may vary from the square footage of a Unit as described in the Prospectus and the Declaration. The dimensions of the Unit shown have been calculated from the exterior boundaries of the exterior walls to the centerline of interior demising walls, including common elements such as structural walls and other interior structural components of the building which method results in a calculation of square footage greater than if measured in other customary methods, such as from finished painted surface to finished painted surface as an example. All dimensions are approximate and may vary with actual construction. All floor plans are subject to change. The furnishings and décor illustrated are not placed in a manner intended to guaranty a particular use of the space and are not included with the purchase of the Unit. Consult the Developer's Prospectus for information regarding terms, conditions, the calculation of the Unit dimensions and to learn what is included with purchase. Marriott International, Inc. The Related Group, and BH Group are Licensors of the Developer. 1717 N Flagler Drive Venture, LLC Ritz-Carlton® is the registered mark of Marriott International, Inc. 2024© 1717 N Flagler Drive Venture, LLC.

 **RELATED**

 **BH GROUP**

Sales by  **Douglas Elliman**  
Development Marketing

TheResidencesWestPalmBeach.com  
(561) 402-8997  
1717 N Flagler Drive  
West Palm Beach, FL 33407



THE RITZ - CARLTON  
RESIDENCES  
WEST PALM BEACH



There are various methods for calculating the square footage of a Unit and depending on the method of calculation, the quoted square footage of a Unit in advertising materials may vary from the square footage of a Unit as described in the Prospectus and the Declaration. The dimensions of the Unit shown have been calculated from the exterior boundaries of the exterior walls to the centerline of interior demising walls, including common elements such as structural walls and other interior structural components of the building which method results in a calculation of square footage greater than if measured in other customary methods, such as from finished painted surface to finished painted surface as an example. All dimensions are approximate and may vary with actual construction. All floor plans are subject to change. The furnishings and décor illustrated are not placed in a manner intended to guaranty a particular use of the space and are not included with the purchase of the Unit. Consult the Developer's Prospectus for information regarding terms, conditions, the calculation of the Unit dimensions and to learn what is included with purchase. Marriott International, Inc. The Related Group, and BH Group are Licensors of the Developer. 1717 N Flagler Drive Venture, LLC Ritz-Carlton® is the registered mark of Marriott International, Inc. 2024© 1717 N Flagler Drive Venture, LLC.

The most prestigious place *to call home.*

FLOOR PLAN RESIDENCE B6



THE RITZ-CARLTON  
RESIDENCES

WEST PALM BEACH

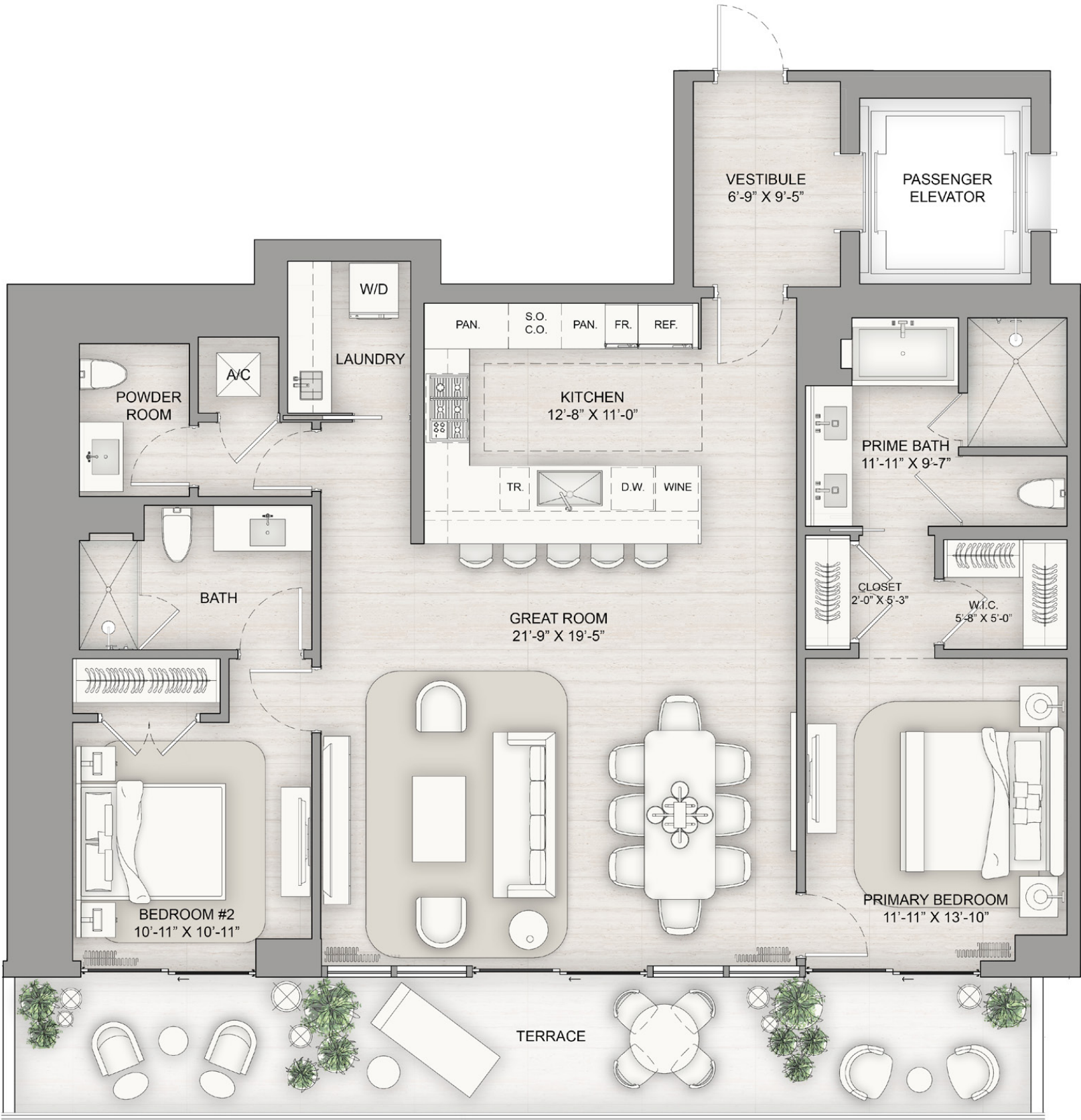
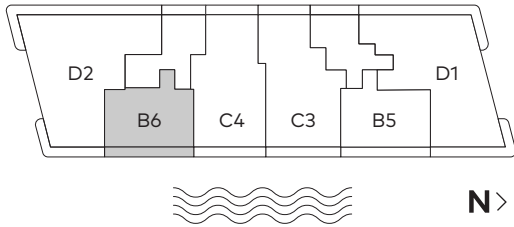
Residence B6

2 Bedrooms  
2 Bathrooms  
1 Powder Room

INTERIOR  
1,566 SF

EXTERIOR  
302 SF

TOTAL AREA  
1,868 SF



TheResidencesWestPalmBeach.com | (561) 402-8997 | 1717 N Flagler Drive West Palm Beach, FL 33407

There are various methods for calculating the square footage of a Unit and depending on the method of calculation, the quoted square footage of a Unit in advertising materials may vary from the square footage of a Unit as described in the Prospectus and the Declaration. The dimensions of the Unit shown have been calculated from the exterior boundaries of the exterior walls to the centerline of interior demising walls, including common elements such as structural walls and other interior structural components of the building which method results in a calculation of square footage greater than if measured in other customary methods, such as from finished painted surface to finished painted surface as an example. All dimensions are approximate and may vary with actual construction. All floor plans are subject to change. The furnishings and décor illustrated are not placed in a manner intended to guaranty a particular use of the space and are not included with the purchase of the Unit. Consult the Developer's Prospectus for information regarding terms, conditions, the calculation of the Unit dimensions and to learn what is included with purchase. Marriott International, Inc. The Related Group, and BH Group are Licensors of the Developer. 1717 N Flagler Drive Venture, LLC Ritz-Carlton® is the registered mark of Marriott International, Inc. 2024© 1717 N Flagler Drive Venture, LLC. ®

RELATED BH GROUP Sales by Douglas Elliman Development Marketing

TheResidencesWestPalmBeach.com  
(561) 402-8997  
1717 N Flagler Drive  
West Palm Beach, FL 33407



THE RITZ - CARLTON  
RESIDENCES

WEST PALM BEACH



There are various methods for calculating the square footage of a Unit and depending on the method of calculation, the quoted square footage of a Unit in advertising materials may vary from the square footage of a Unit as described in the Prospectus and the Declaration. The dimensions of the Unit shown have been calculated from the exterior boundaries of the exterior walls to the centerline of interior demising walls, including common elements such as structural walls and other interior structural components of the building which method results in a calculation of square footage greater than if measured in other customary methods, such as from finished painted surface to finished painted surface as an example. All dimensions are approximate and may vary with actual construction. All floor plans are subject to change. The furnishings and décor illustrated are not placed in a manner intended to guaranty a particular use of the space and are not included with the purchase of the Unit. Consult the Developer's Prospectus for information regarding terms, conditions, the calculation of the Unit dimensions and to learn what is included with purchase. Marriott International, Inc. The Related Group, and BH Group are Licensors of the Developer. 1717 N Flagler Drive Venture, LLC Ritz-Carlton® is the registered mark of Marriott International, Inc. 2024© 1717 N Flagler Drive Venture, LLC.

The most prestigious place *to call home.*

FLOOR PLAN RESIDENCE D2



THE RITZ-CARLTON  
RESIDENCES

WEST PALM BEACH

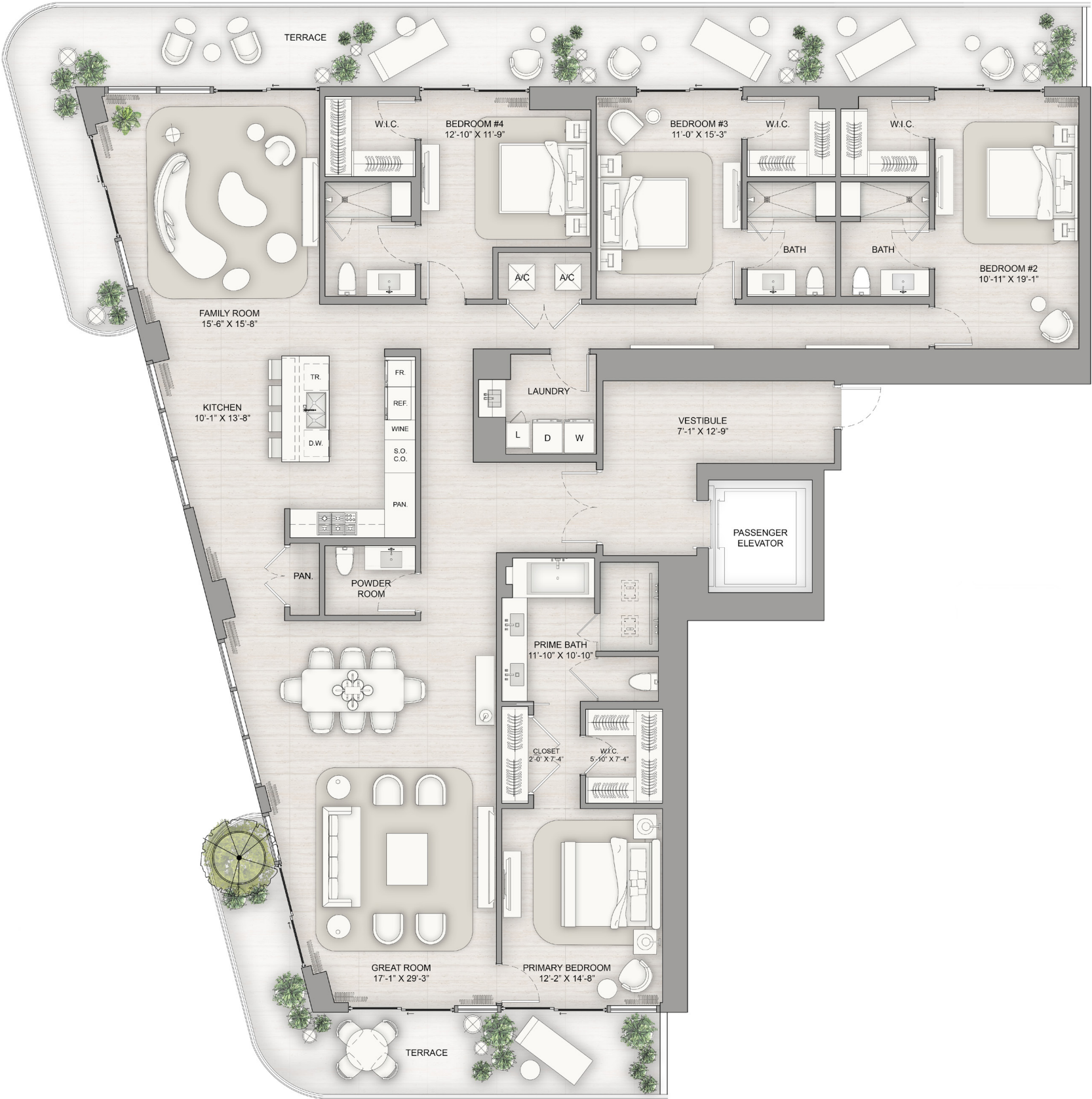
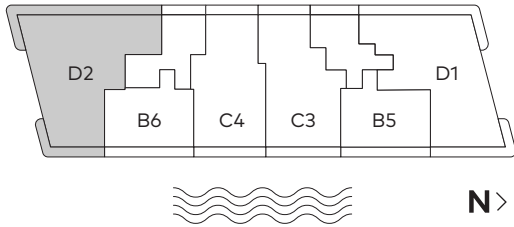
Residence D2

4 Bedrooms  
4 Bathrooms  
1 Powder Room

INTERIOR  
3,331 SF

EXTERIOR  
898 SF

TOTAL AREA  
4,229 SF



TheResidencesWestPalmBeach.com | (561) 402-8997 | 1717 N Flagler Drive West Palm Beach, FL 33407

There are various methods for calculating the square footage of a Unit and depending on the method of calculation, the quoted square footage of a Unit in advertising materials may vary from the square footage of a Unit as described in the Prospectus and the Declaration. The dimensions of the Unit shown have been calculated from the exterior boundaries of the exterior walls to the centerline of interior demising walls, including common elements such as structural walls and other interior structural components of the building which method results in a calculation of square footage greater than if measured in other customary methods, such as from finished painted surface to finished painted surface as an example. All dimensions are approximate and may vary with actual construction. All floor plans are subject to change. The furnishings and décor illustrated are not placed in a manner intended to guaranty a particular use of the space and are not included with the purchase of the Unit. Consult the Developer's Prospectus for information regarding terms, conditions, the calculation of the Unit dimensions and to learn what is included with purchase. Marriott International, Inc. The Related Group, and BH Group are Licensors of the Developer. 1717 N Flagler Drive Venture, LLC Ritz-Carlton® is the registered mark of Marriott International, Inc. 2024© 1717 N Flagler Drive Venture, LLC.

TheResidencesWestPalmBeach.com  
(561) 402-8997  
1717 N Flagler Drive  
West Palm Beach, FL 33407



THE RITZ - CARLTON  
RESIDENCES  
WEST PALM BEACH



There are various methods for calculating the square footage of a Unit and depending on the method of calculation, the quoted square footage of a Unit in advertising materials may vary from the square footage of a Unit as described in the Prospectus and the Declaration. The dimensions of the Unit shown have been calculated from the exterior boundaries of the exterior walls to the centerline of interior demising walls, including common elements such as structural walls and other interior structural components of the building which method results in a calculation of square footage greater than if measured in other customary methods, such as from finished painted surface to finished painted surface as an example. All dimensions are approximate and may vary with actual construction. All floor plans are subject to change. The furnishings and décor illustrated are not placed in a manner intended to guaranty a particular use of the space and are not included with the purchase of the Unit. Consult the Developer's Prospectus for information regarding terms, conditions, the calculation of the Unit dimensions and to learn what is included with purchase. Marriott International, Inc. The Related Group, and BH Group are Licensors of the Developer. 1717 N Flagler Drive Venture, LLC Ritz-Carlton® is the registered mark of Marriott International, Inc. 2024© 1717 N Flagler Drive Venture, LLC.

The most prestigious place *to call home.*

FLOOR PLAN RESIDENCE C1



THE RITZ-CARLTON  
RESIDENCES

WEST PALM BEACH

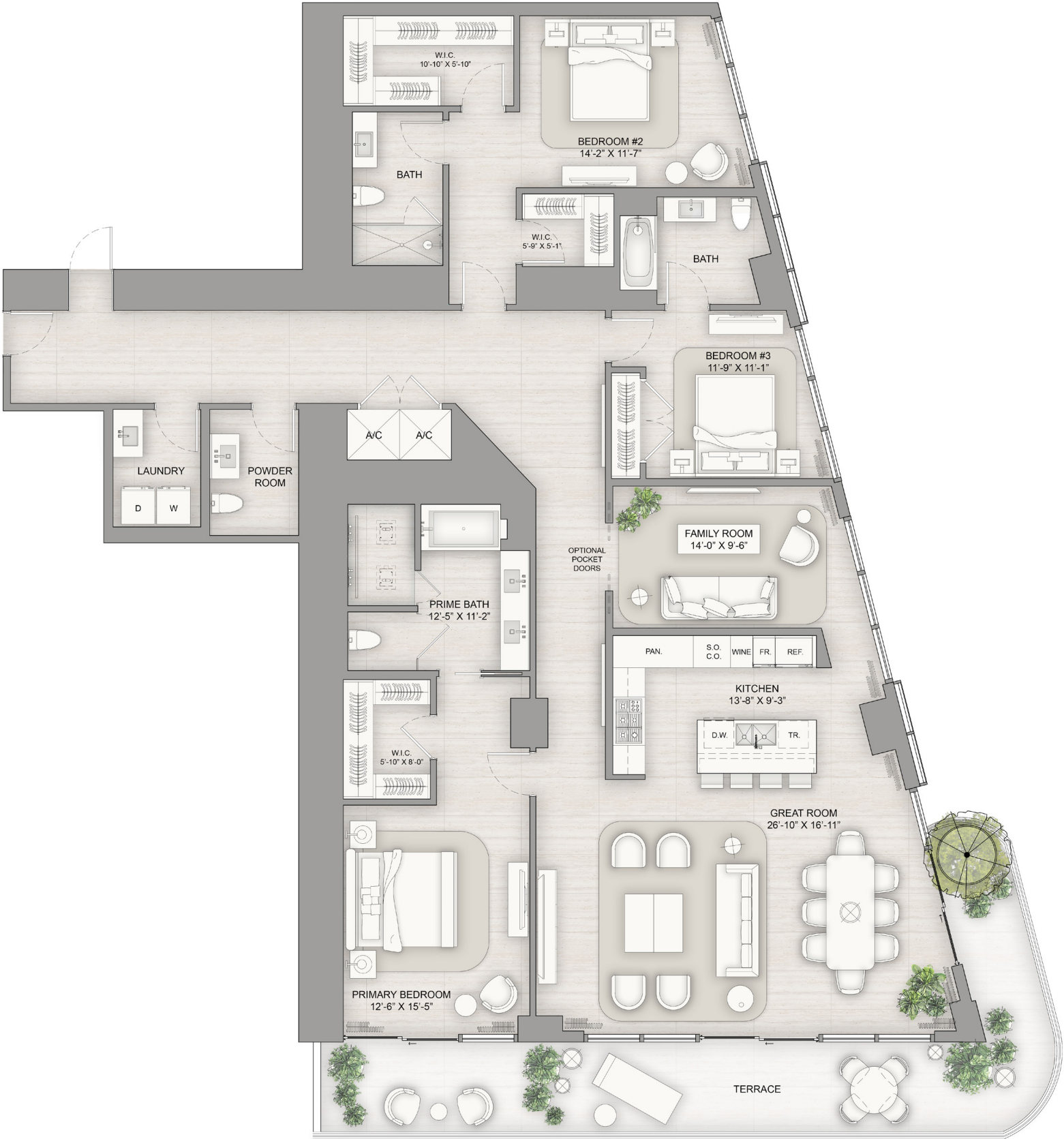
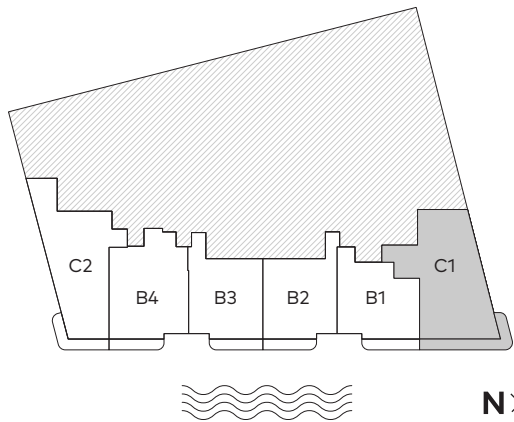
Residence C1

3 Bedrooms  
3 Bathrooms  
1 Powder Room

INTERIOR  
2,777 SF

EXTERIOR  
393 SF

TOTAL AREA  
3,170 SF



TheResidencesWestPalmBeach.com | (561) 402-8997 | 1717 N Flagler Drive West Palm Beach, FL 33407

There are various methods for calculating the square footage of a Unit and depending on the method of calculation, the quoted square footage of a Unit in advertising materials may vary from the square footage of a Unit as described in the Prospectus and the Declaration. The dimensions of the Unit shown have been calculated from the exterior boundaries of the exterior walls to the centerline of interior demising walls, including common elements such as structural walls and other interior structural components of the building which method results in a calculation of square footage greater than if measured in other customary methods, such as from finished painted surface to finished painted surface as an example. All dimensions are approximate and may vary with actual construction. All floor plans are subject to change. The furnishings and décor illustrated are not placed in a manner intended to guaranty a particular use of the space and are not included with the purchase of the Unit. Consult the Developer's Prospectus for information regarding terms, conditions, the calculation of the Unit dimensions and to learn what is included with purchase. Marriott International, Inc. The Related Group, and BH Group are Licensors of the Developer. 1717 N Flagler Drive Venture, LLC Ritz-Carlton® is the registered mark of Marriott International, Inc. 2024© 1717 N Flagler Drive Venture, LLC.

TheResidencesWestPalmBeach.com  
(561) 402-8997  
1717 N Flagler Drive  
West Palm Beach, FL 33407



THE RITZ - CARLTON  
RESIDENCES

WEST PALM BEACH



There are various methods for calculating the square footage of a Unit and depending on the method of calculation, the quoted square footage of a Unit in advertising materials may vary from the square footage of a Unit as described in the Prospectus and the Declaration. The dimensions of the Unit shown have been calculated from the exterior boundaries of the exterior walls to the centerline of interior demising walls, including common elements such as structural walls and other interior structural components of the building which method results in a calculation of square footage greater than if measured in other customary methods, such as from finished painted surface to finished painted surface as an example. All dimensions are approximate and may vary with actual construction. All floor plans are subject to change. The furnishings and décor illustrated are not placed in a manner intended to guaranty a particular use of the space and are not included with the purchase of the Unit. Consult the Developer's Prospectus for information regarding terms, conditions, the calculation of the Unit dimensions and to learn what is included with purchase. Marriott International, Inc. The Related Group, and BH Group are Licensors of the Developer. 1717 N Flagler Drive Venture, LLC Ritz-Carlton® is the registered mark of Marriott International, Inc. 2024© 1717 N Flagler Drive Venture, LLC.

The most prestigious place *to call home.*

FLOOR PLAN RESIDENCE C1.1



THE RITZ-CARLTON  
RESIDENCES

WEST PALM BEACH

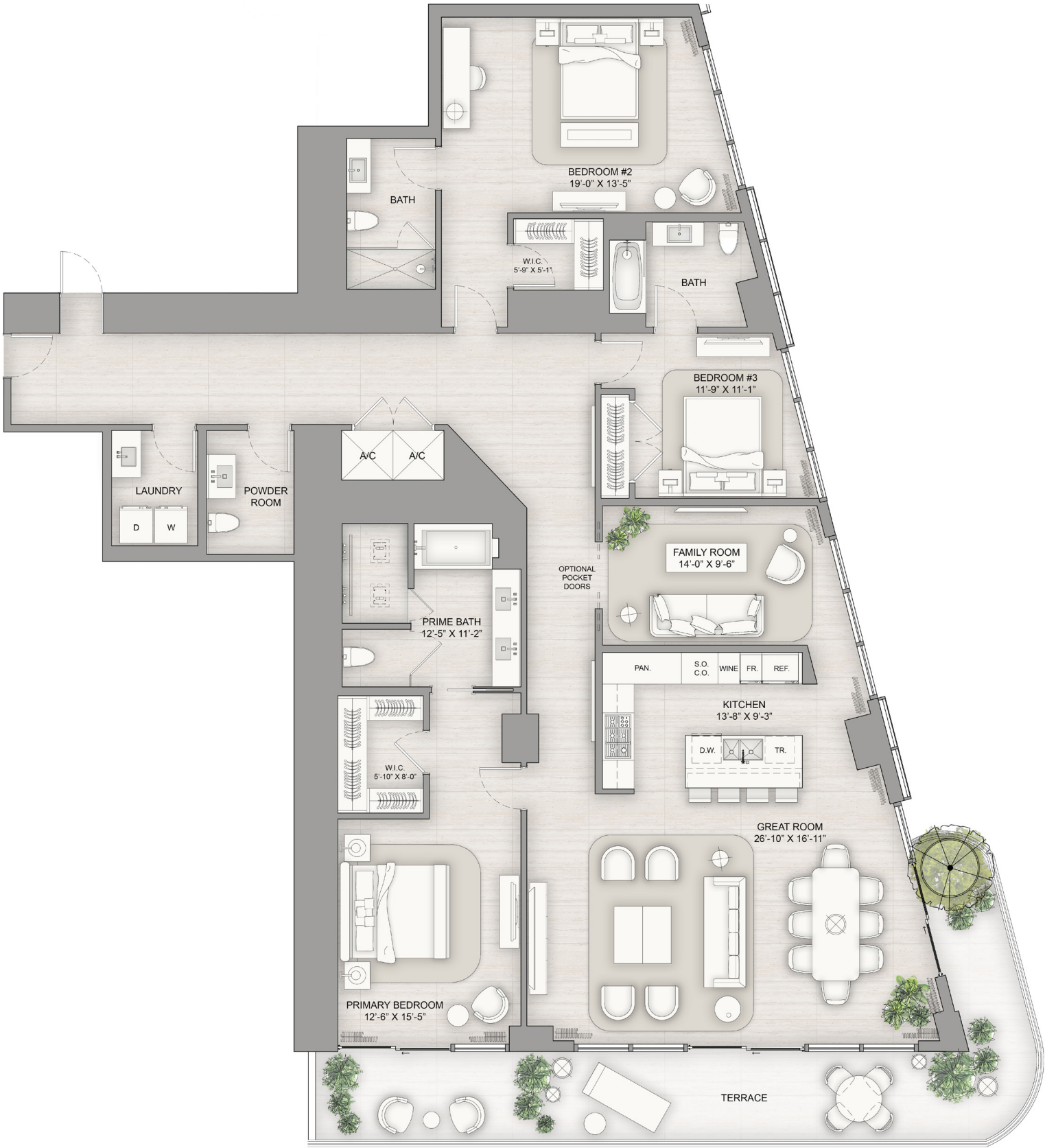
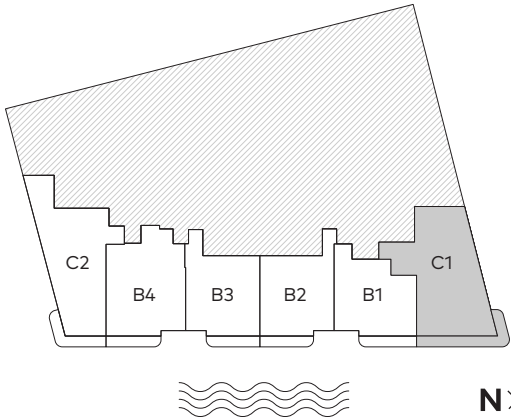
Residence C1.1

3 Bedrooms  
3 Bathrooms  
1 Powder Room

INTERIOR  
2,771 SF

EXTERIOR  
393 SF


TOTAL AREA  
3,164 SF



TheResidencesWestPalmBeach.com | (561) 402-8997 | 1717 N Flagler Drive West Palm Beach, FL 33407

There are various methods for calculating the square footage of a Unit and depending on the method of calculation, the quoted square footage of a Unit in advertising materials may vary from the square footage of a Unit as described in the Prospectus and the Declaration. The dimensions of the Unit shown have been calculated from the exterior boundaries of the exterior walls to the centerline of interior demising walls, including common elements such as structural walls and other interior structural components of the building which method results in a calculation of square footage greater than if measured in other customary methods, such as from finished painted surface to finished painted surface as an example. All dimensions are approximate and may vary with actual construction. All floor plans are subject to change. The furnishings and décor illustrated are not placed in a manner intended to guaranty a particular use of the space and are not included with the purchase of the Unit. Consult the Developer's Prospectus for information regarding terms, conditions, the calculation of the Unit dimensions and to learn what is included with purchase. Marriott International, Inc. The Related Group, and BH Group are Licensors of the Developer. 1717 N Flagler Drive Venture, LLC Ritz-Carlton® is the registered mark of Marriott International, Inc. 2024© 1717 N Flagler Drive Venture, LLC. 🏠

 **RELATED**

 **BH GROUP**

Sales by  **Douglas Elliman**  
Development Marketing

TheResidencesWestPalmBeach.com  
(561) 402-8997  
1717 N Flagler Drive  
West Palm Beach, FL 33407



THE RITZ - CARLTON  
RESIDENCES  
WEST PALM BEACH



There are various methods for calculating the square footage of a Unit and depending on the method of calculation, the quoted square footage of a Unit in advertising materials may vary from the square footage of a Unit as described in the Prospectus and the Declaration. The dimensions of the Unit shown have been calculated from the exterior boundaries of the exterior walls to the centerline of interior demising walls, including common elements such as structural walls and other interior structural components of the building which method results in a calculation of square footage greater than if measured in other customary methods, such as from finished painted surface to finished painted surface as an example. All dimensions are approximate and may vary with actual construction. All floor plans are subject to change. The furnishings and décor illustrated are not placed in a manner intended to guaranty a particular use of the space and are not included with the purchase of the Unit. Consult the Developer's Prospectus for information regarding terms, conditions, the calculation of the Unit dimensions and to learn what is included with purchase. Marriott International, Inc. The Related Group, and BH Group are Licensors of the Developer. 1717 N Flagler Drive Venture, LLC Ritz-Carlton® is the registered mark of Marriott International, Inc. 2024© 1717 N Flagler Drive Venture, LLC.

The most prestigious place *to call home.*

FLOOR PLAN RESIDENCE B1



THE RITZ-CARLTON  
RESIDENCES

WEST PALM BEACH

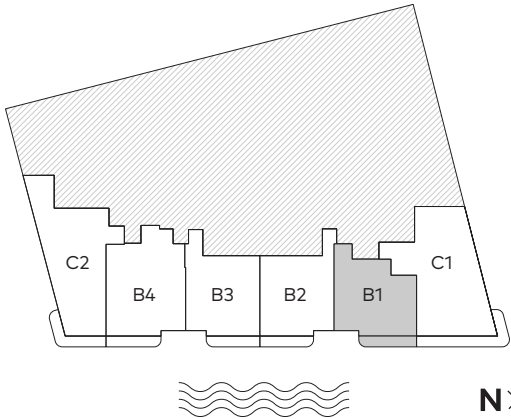
Residence B1

2 Bedrooms  
2 Bathrooms  
1 Powder Room

INTERIOR  
1,874 SF

EXTERIOR  
204 SF

TOTAL AREA  
2,078 SF



TheResidencesWestPalmBeach.com | (561) 402-8997 | 1717 N Flagler Drive West Palm Beach, FL 33407

There are various methods for calculating the square footage of a Unit and depending on the method of calculation, the quoted square footage of a Unit in advertising materials may vary from the square footage of a Unit as described in the Prospectus and the Declaration. The dimensions of the Unit shown have been calculated from the exterior boundaries of the exterior walls to the centerline of interior demising walls, including common elements such as structural walls and other interior structural components of the building which method results in a calculation of square footage greater than if measured in other customary methods, such as from finished painted surface to finished painted surface as an example. All dimensions are approximate and may vary with actual construction. All floor plans are subject to change. The furnishings and décor illustrated are not placed in a manner intended to guaranty a particular use of the space and are not included with the purchase of the Unit. Consult the Developer's Prospectus for information regarding terms, conditions, the calculation of the Unit dimensions and to learn what is included with purchase. Marriott International, Inc. The Related Group, and BH Group are Licensors of the Developer. 1717 N Flagler Drive Venture, LLC Ritz-Carlton® is the registered mark of Marriott International, Inc. 2024© 1717 N Flagler Drive Venture, LLC. ®

TheResidencesWestPalmBeach.com  
(561) 402-8997  
1717 N Flagler Drive  
West Palm Beach, FL 33407



THE RITZ - CARLTON  
RESIDENCES

WEST PALM BEACH



There are various methods for calculating the square footage of a Unit and depending on the method of calculation, the quoted square footage of a Unit in advertising materials may vary from the square footage of a Unit as described in the Prospectus and the Declaration. The dimensions of the Unit shown have been calculated from the exterior boundaries of the exterior walls to the centerline of interior demising walls, including common elements such as structural walls and other interior structural components of the building which method results in a calculation of square footage greater than if measured in other customary methods, such as from finished painted surface to finished painted surface as an example. All dimensions are approximate and may vary with actual construction. All floor plans are subject to change. The furnishings and décor illustrated are not placed in a manner intended to guaranty a particular use of the space and are not included with the purchase of the Unit. Consult the Developer's Prospectus for information regarding terms, conditions, the calculation of the Unit dimensions and to learn what is included with purchase. Marriott International, Inc. The Related Group, and BH Group are Licensors of the Developer. 1717 N Flagler Drive Venture, LLC Ritz-Carlton® is the registered mark of Marriott International, Inc. 2024© 1717 N Flagler Drive Venture, LLC.

The most prestigious place *to call home.*

FLOOR PLAN RESIDENCE B2



THE RITZ-CARLTON  
RESIDENCES

WEST PALM BEACH

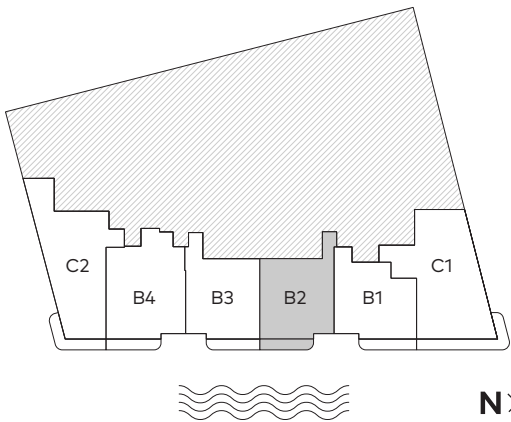
Residence B2

2 Bedrooms  
2 Bathrooms  
1 Powder Room

INTERIOR  
1,929 SF

EXTERIOR  
188.5 SF

TOTAL AREA  
2,117.5 SF



TheResidencesWestPalmBeach.com | (561) 402-8997 | 1717 N Flagler Drive West Palm Beach, FL 33407

There are various methods for calculating the square footage of a Unit and depending on the method of calculation, the quoted square footage of a Unit in advertising materials may vary from the square footage of a Unit as described in the Prospectus and the Declaration. The dimensions of the Unit shown have been calculated from the exterior boundaries of the exterior walls to the centerline of interior demising walls, including common elements such as structural walls and other interior structural components of the building which method results in a calculation of square footage greater than if measured in other customary methods, such as from finished painted surface to finished painted surface as an example. All dimensions are approximate and may vary with actual construction. All floor plans are subject to change. The furnishings and décor illustrated are not placed in a manner intended to guaranty a particular use of the space and are not included with the purchase of the Unit. Consult the Developer's Prospectus for information regarding terms, conditions, the calculation of the Unit dimensions and to learn what is included with purchase. Marriott International, Inc. The Related Group, and BH Group are Licensors of the Developer. 1717 N Flagler Drive Venture, LLC Ritz-Carlton® is the registered mark of Marriott International, Inc. 2024© 1717 N Flagler Drive Venture, LLC. 🏠

TheResidencesWestPalmBeach.com  
(561) 402-8997  
1717 N Flagler Drive  
West Palm Beach, FL 33407



THE RITZ - CARLTON  
RESIDENCES  
WEST PALM BEACH



There are various methods for calculating the square footage of a Unit and depending on the method of calculation, the quoted square footage of a Unit in advertising materials may vary from the square footage of a Unit as described in the Prospectus and the Declaration. The dimensions of the Unit shown have been calculated from the exterior boundaries of the exterior walls to the centerline of interior demising walls, including common elements such as structural walls and other interior structural components of the building which method results in a calculation of square footage greater than if measured in other customary methods, such as from finished painted surface to finished painted surface as an example. All dimensions are approximate and may vary with actual construction. All floor plans are subject to change. The furnishings and décor illustrated are not placed in a manner intended to guaranty a particular use of the space and are not included with the purchase of the Unit. Consult the Developer's Prospectus for information regarding terms, conditions, the calculation of the Unit dimensions and to learn what is included with purchase. Marriott International, Inc. The Related Group, and BH Group are Licensors of the Developer. 1717 N Flagler Drive Venture, LLC Ritz-Carlton® is the registered mark of Marriott International, Inc. 2024© 1717 N Flagler Drive Venture, LLC.

The most prestigious place *to call home.*

FLOOR PLAN RESIDENCE B3



THE RITZ-CARLTON  
RESIDENCES

WEST PALM BEACH

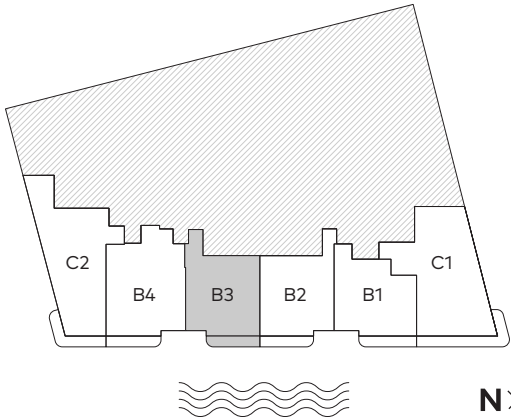
Residence B3

2 Bedrooms  
2 Bathrooms  
1 Powder Room

INTERIOR  
1,939 SF

EXTERIOR  
188.5 SF

TOTAL AREA  
2,127.5 SF



TheResidencesWestPalmBeach.com | (561) 402-8997 | 1717 N Flagler Drive West Palm Beach, FL 33407

There are various methods for calculating the square footage of a Unit and depending on the method of calculation, the quoted square footage of a Unit in advertising materials may vary from the square footage of a Unit as described in the Prospectus and the Declaration. The dimensions of the Unit shown have been calculated from the exterior boundaries of the exterior walls to the centerline of interior demising walls, including common elements such as structural walls and other interior structural components of the building which method results in a calculation of square footage greater than if measured in other customary methods, such as from finished painted surface to finished painted surface as an example. All dimensions are approximate and may vary with actual construction. All floor plans are subject to change. The furnishings and décor illustrated are not placed in a manner intended to guaranty a particular use of the space and are not included with the purchase of the Unit. Consult the Developer's Prospectus for information regarding terms, conditions, the calculation of the Unit dimensions and to learn what is included with purchase. Marriott International, Inc. The Related Group, and BH Group are Licensors of the Developer. 1717 N Flagler Drive Venture, LLC Ritz-Carlton® is the registered mark of Marriott International, Inc. 2024© 1717 N Flagler Drive Venture, LLC.

TheResidencesWestPalmBeach.com  
(561) 402-8997  
1717 N Flagler Drive  
West Palm Beach, FL 33407



THE RITZ - CARLTON  
RESIDENCES  
WEST PALM BEACH



There are various methods for calculating the square footage of a Unit and depending on the method of calculation, the quoted square footage of a Unit in advertising materials may vary from the square footage of a Unit as described in the Prospectus and the Declaration. The dimensions of the Unit shown have been calculated from the exterior boundaries of the exterior walls to the centerline of interior demising walls, including common elements such as structural walls and other interior structural components of the building which method results in a calculation of square footage greater than if measured in other customary methods, such as from finished painted surface to finished painted surface as an example. All dimensions are approximate and may vary with actual construction. All floor plans are subject to change. The furnishings and décor illustrated are not placed in a manner intended to guaranty a particular use of the space and are not included with the purchase of the Unit. Consult the Developer's Prospectus for information regarding terms, conditions, the calculation of the Unit dimensions and to learn what is included with purchase. Marriott International, Inc. The Related Group, and BH Group are Licensors of the Developer. 1717 N Flagler Drive Venture, LLC Ritz-Carlton® is the registered mark of Marriott International, Inc. 2024© 1717 N Flagler Drive Venture, LLC.

The most prestigious place *to call home.*

FLOOR PLAN RESIDENCE B4



THE RITZ-CARLTON  
RESIDENCES

WEST PALM BEACH

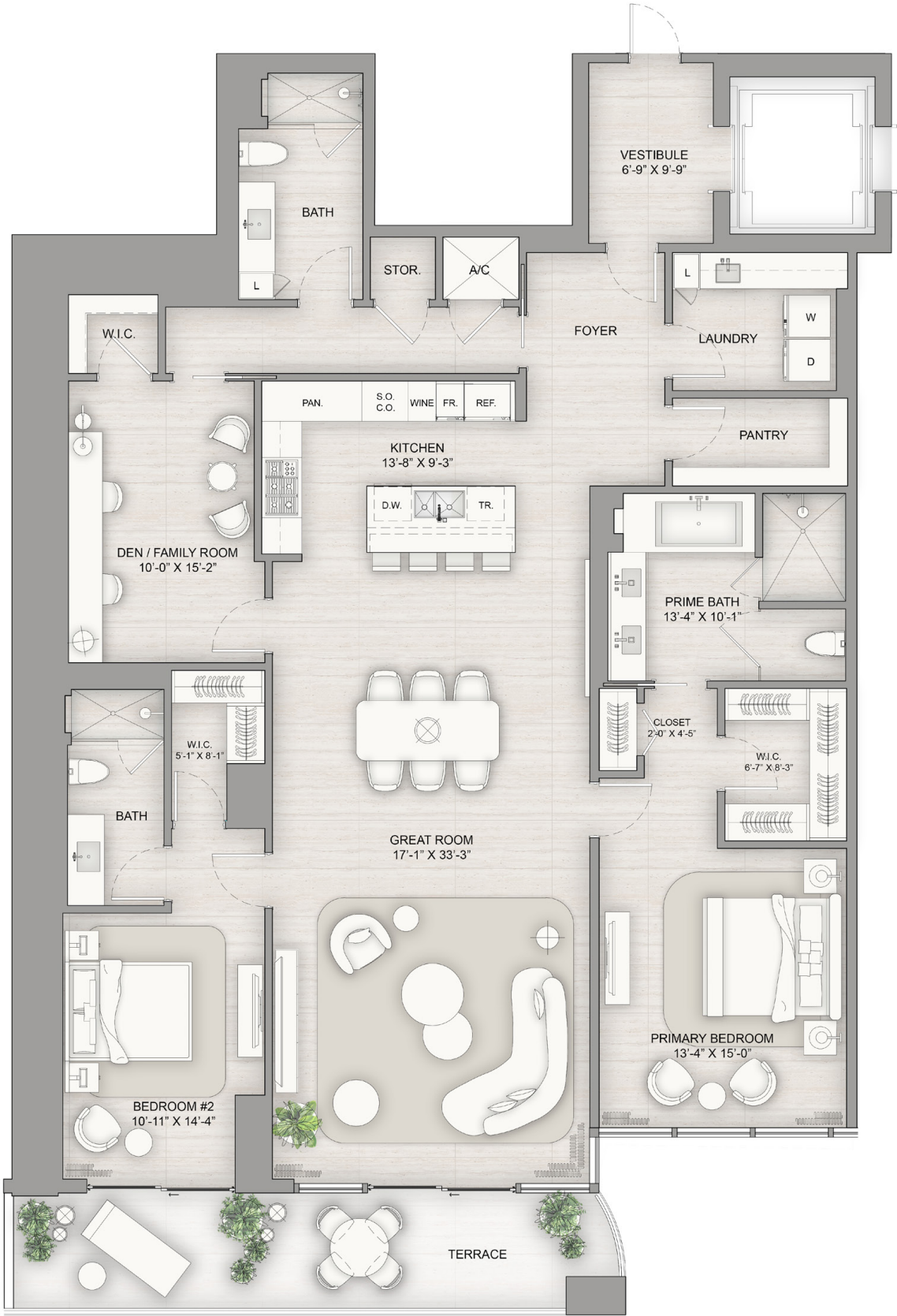
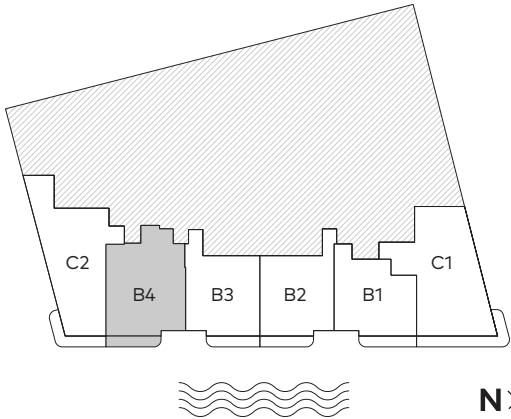
Residence B4

2 Bedrooms  
3 Bathrooms

INTERIOR  
2,350 SF

EXTERIOR  
193 SF

TOTAL AREA  
2,543 SF



TheResidencesWestPalmBeach.com | (561) 402-8997 | 1717 N Flagler Drive West Palm Beach, FL 33407

There are various methods for calculating the square footage of a Unit and depending on the method of calculation, the quoted square footage of a Unit in advertising materials may vary from the square footage of a Unit as described in the Prospectus and the Declaration. The dimensions of the Unit shown have been calculated from the exterior boundaries of the exterior walls to the centerline of interior demising walls, including common elements such as structural walls and other interior structural components of the building which method results in a calculation of square footage greater than if measured in other customary methods, such as from finished painted surface to finished painted surface as an example. All dimensions are approximate and may vary with actual construction. All floor plans are subject to change. The furnishings and décor illustrated are not placed in a manner intended to guaranty a particular use of the space and are not included with the purchase of the Unit. Consult the Developer's Prospectus for information regarding terms, conditions, the calculation of the Unit dimensions and to learn what is included with purchase. Marriott International, Inc. The Related Group, and BH Group are Licensors of the Developer. 1717 N Flagler Drive Venture, LLC Ritz-Carlton® is the registered mark of Marriott International, Inc. 2024© 1717 N Flagler Drive Venture, LLC.

TheResidencesWestPalmBeach.com  
(561) 402-8997  
1717 N Flagler Drive  
West Palm Beach, FL 33407



THE RITZ - CARLTON  
RESIDENCES

WEST PALM BEACH



There are various methods for calculating the square footage of a Unit and depending on the method of calculation, the quoted square footage of a Unit in advertising materials may vary from the square footage of a Unit as described in the Prospectus and the Declaration. The dimensions of the Unit shown have been calculated from the exterior boundaries of the exterior walls to the centerline of interior demising walls, including common elements such as structural walls and other interior structural components of the building which method results in a calculation of square footage greater than if measured in other customary methods , such as from finished painted surface to finished painted surface as an example. All dimensions are approximate and may vary with actual construction. All floor plans are subject to change. The furnishings and décor illustrated are not placed in a manner intended to guaranty a particular use of the space and are not included with the purchase of the Unit. Consult the Developer's Prospectus for information regarding terms, conditions, the calculation of the Unit dimensions and to learn what is included with purchase. Marriott International, Inc. The Related Group, and BH Group are Licensors of the Developer. 1717 N Flagler Drive Venture, LLC Ritz-Carlton® is the registered mark of Marriott International, Inc. 2024© 1717 N Flagler Drive Venture, LLC.

The most prestigious place *to call home.*

FLOOR PLAN RESIDENCE C2



THE RITZ-CARLTON  
RESIDENCES

WEST PALM BEACH

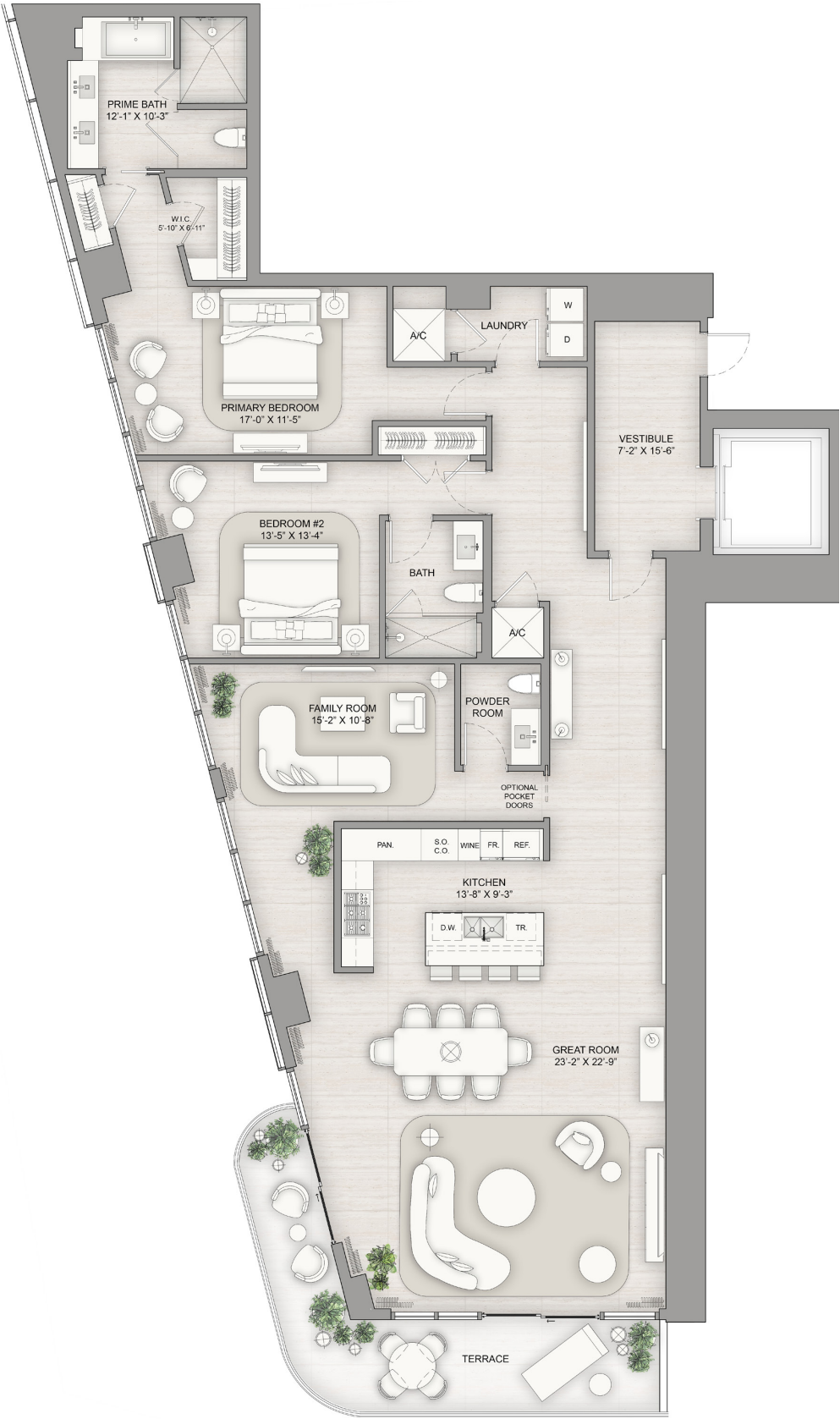
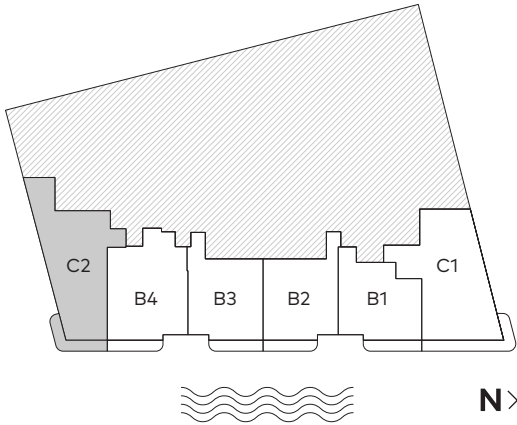
Residence C2

2 Bedrooms  
2 Bathrooms  
1 Powder Room

INTERIOR  
2,510 SF

EXTERIOR  
240 SF

TOTAL AREA  
2,750 SF



TheResidencesWestPalmBeach.com | (561) 402-8997 | 1717 N Flagler Drive West Palm Beach, FL 33407

There are various methods for calculating the square footage of a Unit and depending on the method of calculation, the quoted square footage of a Unit in advertising materials may vary from the square footage of a Unit as described in the Prospectus and the Declaration. The dimensions of the Unit shown have been calculated from the exterior boundaries of the exterior walls to the centerline of interior demising walls, including common elements such as structural walls and other interior structural components of the building which method results in a calculation of square footage greater than if measured in other customary methods, such as from finished painted surface to finished painted surface as an example. All dimensions are approximate and may vary with actual construction. All floor plans are subject to change. The furnishings and décor illustrated are not placed in a manner intended to guaranty a particular use of the space and are not included with the purchase of the Unit. Consult the Developer's Prospectus for information regarding terms, conditions, the calculation of the Unit dimensions and to learn what is included with purchase. Marriott International, Inc. The Related Group, and BH Group are Licensors of the Developer. 1717 N Flagler Drive Venture, LLC Ritz-Carlton® is the registered mark of Marriott International, Inc. 2024© 1717 N Flagler Drive Venture, LLC.