



THE RITZ-CARLTON RESIDENCES

WEST PALM BEACH

The most prestigious place *to call home.*

LOBBY & AMENITIES FLOOR PLANS


Lobby & Amenities

FLOOR PLAN

- 1 Reception
- 2 Grab and Go Coffee & Desert Counter
- 3 Elevator Lobby - North
- 4 BOH Service
- 5 WC
- 6 Custodian's Closet
- 7 Mail Room
- 8 Package Room
- 9 Lounge - South
- 10 Elevator Lobby - South
- 11 Valet Office



TheResidencesWestPalmBeach.com | (561) 402-8997 | 1717 N Flagler Drive West Palm Beach, FL 33407

There are various methods for calculating the square footage of a Unit and depending on the method of calculation, the quoted square footage of a Unit in advertising materials may vary from the square footage of a Unit as described in the Prospectus and the Declaration. The dimensions of the Unit shown have been calculated from the exterior boundaries of the exterior walls to the centerline of interior demising walls, including common elements such as structural walls and other interior structural components of the building which method results in a calculation of square footage greater than if measured in other customary methods, such as from finished painted surface to finished painted surface as an example. All dimensions are approximate and may vary with actual construction. All floor plans are subject to change. The furnishings and décor illustrated are not placed in a manner intended to guaranty a particular use of the space and are not included with the purchase of the Unit. Consult the Developer's Prospectus for information regarding terms, conditions, the calculation of the Unit dimensions and to learn what is included with purchase. Marriott International, Inc. The Related Group, and BH Group are Licensors of the Developer. 1717 N Flagler Drive Venture, LLC Ritz-Carlton® is the registered mark of Marriott International, Inc. 2024© 1717 N Flagler Drive Venture, LLC. 


9th Floor Amenities

FLOOR PLAN

- 1 Elevator Lobby - South
- 2 Board Room/PDR
- 3 Pantry Kitchen
- 4 Chef's Kitchen
- 5 Outdoor Lounge
- 6 Resident's Lounge
- 7 TV Lounge
- 8 Kid's & Teen's
- 9 Elevator Lobby - North
- 10 WC
- 11 Golf VR
- 12 Wellness Lounge
- 13 Spa & Treatment Room
- 14 Locker Room w/ Steam & Sauna
- 15 Fitness
- 16 Movement Studio & Terrace
- 17 Game Lounge
- 18 Pool & Pool Deck
- 19 Pool Cabana
- 20 Jacuzzi
- 21 Pool Bar
- 22 BBQ
- 23 Bocce Court
- 24 Outdoor Movie Theater



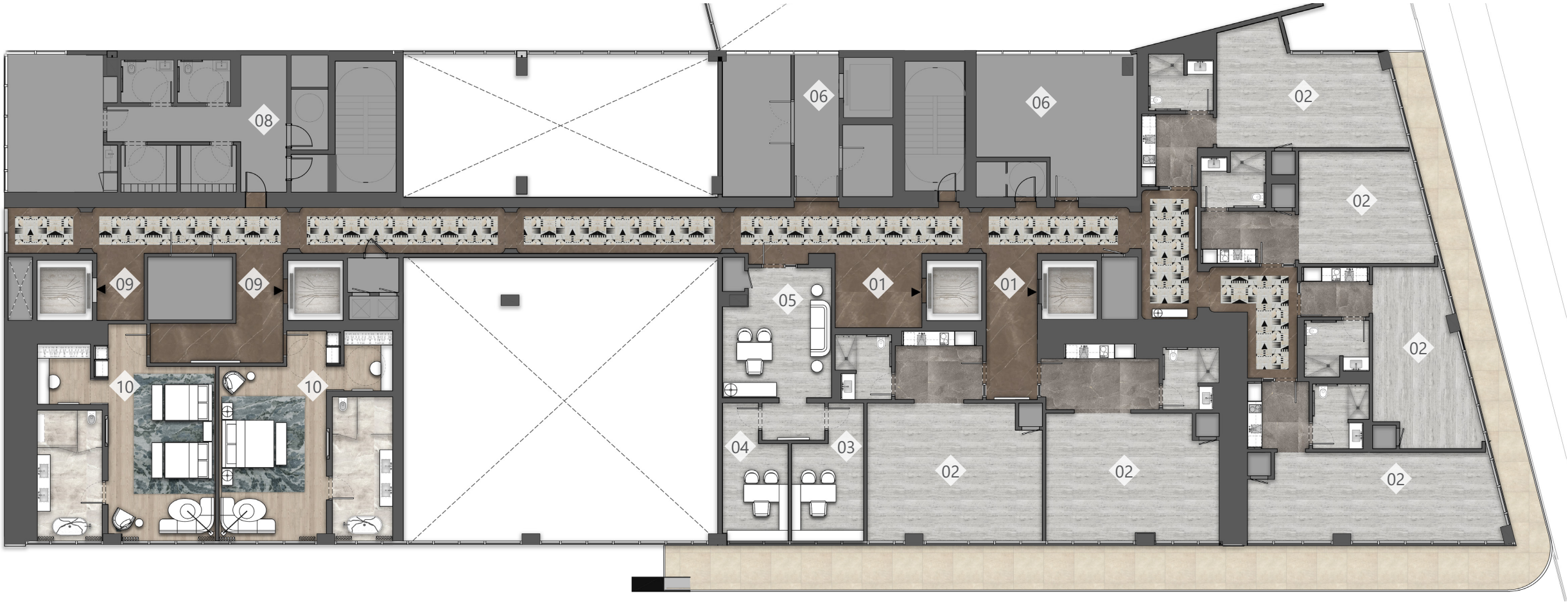
TheResidencesWestPalmBeach.com | (561) 402-8997 | 1717 N Flagler Drive West Palm Beach, FL 33407

There are various methods for calculating the square footage of a Unit and depending on the method of calculation, the quoted square footage of a Unit in advertising materials may vary from the square footage of a Unit as described in the Prospectus and the Declaration. The dimensions of the Unit shown have been calculated from the exterior boundaries of the exterior walls to the centerline of interior demising walls, including common elements such as structural walls and other interior structural components of the building which method results in a calculation of square footage greater than if measured in other customary methods, such as from finished painted surface to finished painted surface as an example. All dimensions are approximate and may vary with actual construction. All floor plans are subject to change. The furnishings and décor illustrated are not placed in a manner intended to guaranty a particular use of the space and are not included with the purchase of the Unit. Consult the Developer's Prospectus for information regarding terms, conditions, the calculation of the Unit dimensions and to learn what is included with purchase. Marriott International, Inc. The Related Group, and BH Group are Licensors of the Developer. 1717 N Flagler Drive Venture, LLC Ritz-Carlton® is the registered mark of Marriott International, Inc. 2024© 1717 N Flagler Drive Venture, LLC. 


10th Floor Amenities

FLOOR PLAN

- 1 Elevator Lobby - North
- 2 Office Suite
- 3 Director's Office
- 4 Assistant Director's Office
- 5 Liaison
- 6 Marriott Office
- 7 Elevator Lobby - South
- 8 Employee Locker & Break Room
- 9 Ritz-Carlton Guest Suite



TheResidencesWestPalmBeach.com | (561) 402-8997 | 1717 N Flagler Drive West Palm Beach, FL 33407

There are various methods for calculating the square footage of a Unit and depending on the method of calculation, the quoted square footage of a Unit in advertising materials may vary from the square footage of a Unit as described in the Prospectus and the Declaration. The dimensions of the Unit shown have been calculated from the exterior boundaries of the exterior walls to the centerline of interior demising walls, including common elements such as structural walls and other interior structural components of the building which method results in a calculation of square footage greater than if measured in other customary methods, such as from finished painted surface to finished painted surface as an example. All dimensions are approximate and may vary with actual construction. All floor plans are subject to change. The furnishings and décor illustrated are not placed in a manner intended to guaranty a particular use of the space and are not included with the purchase of the Unit. Consult the Developer's Prospectus for information regarding terms, conditions, the calculation of the Unit dimensions and to learn what is included with purchase. Marriott International, Inc. The Related Group, and BH Group are Licensors of the Developer. 1717 N Flagler Drive Venture, LLC Ritz-Carlton® is the registered mark of Marriott International, Inc. 2024© 1717 N Flagler Drive Venture, LLC. 

TheResidencesWestPalmBeach.com
(561) 402-8997
1717 N Flagler Drive
West Palm Beach, FL 33407



There are various methods for calculating the square footage of a Unit and depending on the method of calculation, the quoted square footage of a Unit in advertising materials may vary from the square footage of a Unit as described in the Prospectus and the Declaration. The dimensions of the Unit shown have been calculated from the exterior boundaries of the exterior walls to the centerline of interior demising walls, including common elements such as structural walls and other interior structural components of the building which method results in a calculation of square footage greater than if measured in other customary methods, such as from finished painted surface to finished painted surface as an example. All dimensions are approximate and may vary with actual construction. All floor plans are subject to change. The furnishings and décor illustrated are not placed in a manner intended to guaranty a particular use of the space and are not included with the purchase of the Unit. Consult the Developer's Prospectus for information regarding terms, conditions, the calculation of the Unit dimensions and to learn what is included with purchase. Marriott International, Inc. The Related Group, and BH Group are Licensors of the Developer. 1717 N Flagler Drive Venture, LLC Ritz-Carlton® is the registered mark of Marriott International, Inc. 2022© 1717 N Flagler Drive Venture, LLC. 🏠