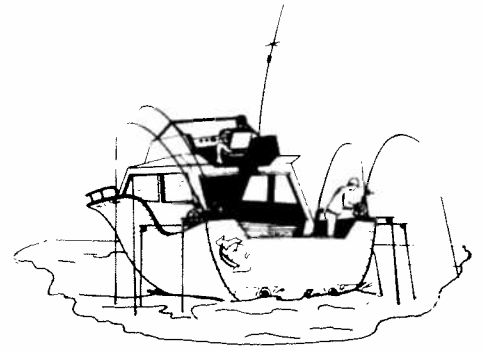




# FISHING TALES



DETROIT AREA CHAPTER  
MICHIGAN STEELHEAD AND SALMON FISHERMEN'S ASSOCIATION

25¢

PUBLISHED MONTHLY BY DETROIT AREA CHAPTER VOLUME 1 NUMBER 3 APRIL 1976

## BAN ON PCB'S

The state of Michigan has passed a ban on PCB's as of March, 1976. This represents a significant victory in the fight to eliminate them from the Great Lakes. We can pause at this point to enjoy the victory and to reflect on what the Steelheaders are all about.

Although the Steelheaders cannot claim to be the only contributors to the cause of removing PCB's from the Great Lakes, the state ban does represent the achievement of one of our goals in the overall PCB campaign. And, as such, it can be shown as an example of what can be accomplished to improve fishing in the Great Lakes through the process of organized effort.

Who is to say that the letters which originated in the chapter PCB committee, and the letters which hopefully originated from

our membership, were not the final impetus which caused Gov. Milliken to sign the bill banning the PCB's.

Many thanks are in order to the members who made an effort influence to their legislators, the DNR and anyone who would listen. Hopefully, our success will encourage others to act on this issue and others. The task can be long and tedious but the systems works.

As for the future on PCB's we now want to concentrate on 1) enforcement of the state ban, 2) enactment of similar bans in all Great Lake states and Canada, 3) and enactment of a national ban.

The MSSFA membership is indebted to Ken Bonin, chapter director and PCB Committee chairman for his efforts in behalf of all Michigan Steelheaders.

## CHAPTER TOURNEY MAY 29th !

The chapter will hold its first fishing tournament on May 29th in South Haven. The tournament committee will be on hand at the April 28th meeting to register boats, and answer any questions on rules, entry fee and where to stay. Fishermen wishing to enter must be a MSSFA member as well as a Detroit Area Chapter member. Ten places will be awarded the winner, so sign up at the April meeting.

### TOURNAMENT SCHEDULE:

|              |                 |
|--------------|-----------------|
| May 29       | - South Haven 4 |
| June 12      | - Charlevoix 8  |
| July 17      | - Alpena -      |
| August 21    | - Ludington 5   |
| September 11 | - Oscoda -      |
| October      | - ?             |

Ladies and Gentlemen Tournament on July 3rd Alpena. There is a \$.50 entry fee.

## RESEARCH FISHING TRIP MAY 1 -

### TWO MILLION SALMON IN HURON

They are there and will be feeding ravenously for the next 120 days. Approximately 1.5 million will be mature salmon returning to Lake Huron tributaries. Just where are these 2-3 lb. silvery, high jumping coho and 5-12 lb. tackle-bustin chinook?

We plan to find out starting May first at Port Huron on our first research fishing trip. As of this writing reports of good jack-chinook and steelhead catches are being made on the upper St. Clair River. These fish are feeding on the early run smelt. By May 1st the smelt will be returning to Lake Huron and the salmon will be right behind them.

If you haven't signed-up for the trip yet you can call or write Dave Gresham. Give your name and how many in your crew. If you can take guests with you, we have members that don't have boats who are anxious to go along. (Of course they'll help with expenses). Members that don't have boats will be placed on a first come basis. Arrangements have been planned for a dinner, rap-session and a fishing movie. Interested skippers can also contact Dave at our regular membership meeting on the 28th. Approximately 30 boats have registered for the trip so far.

Launch sites, motels & campgrounds will be located on maps provided by the Port Huron chamber of commerce. They will be available at the membership meeting.

What types of tackle should we use? Experience in the Port Huron area for spring fishing indicate light line (8 lb.), long rods, light action. For trolling along

RESEARCH FISHING TRIP. . .  
continued on page 2

## MEMBERSHIP MEETING APRIL 28th

The chapter meeting this month will be on Wednesday the 28th at 7:30 PM. Our scheduled guest speaker, Dr. Wayne Tody, DNR, was regrettably forced to cancel his address due to his recent promotion to number two man in the DNR causing him to juggle his schedule.

At this writing the planning committee advises that there will be a speaker from the DNR and that he'll also bring along a movie.

Other features at the meeting will include the Boat Raffle (see story on page 2) a trolling equipment table and a workshop on shore fishing for spring trout. Details on the upcoming tournaments and research trips will be given also.

As in the past the meeting will be at the Troy-Hilton Inn located on Stephenson Hwy. at 15 Mile Rd. Bring a friend.



## LARGEST TURNOUT IN CLUB HISTORY IT WAS A SUPER MEETING !

The meeting of Wednesday, March 24 will be one meeting few will forget. It was the largest public turnout to attend a Michigan Steelhead and Salmon Fish-

ermen's meeting in the history of the club. More than two thousand fishermen, and interested public attended the Detroit Chapter of the MSSFA meeting.

continued on page 2

**FISHIN' TALES**

Published Monthly by the  
Detroit Area Chapter  
of the  
Michigan Steelhead and  
Salmon Fishermen's Association  
2818 Vinsetta Blvd.  
Royal Oak, Michigan 48073

A decidedly biased paper acknowledging the editors viewpoint that there's only one way permissible to catch the planted anadromous strain and lake trout — hook and line; and those employing any other method be eyed with suspicion, nay, cast into the lot of outlaws and be regarded as such.

**NEWSLETTER COMMITTEE**  
**John Makela, Chairman**

Editor..... John Makela  
583-1910  
Publisher..... Janet Irvine  
Advertising..... John Makela  
Classifieds..... Bob Crosby  
"Tackle Trader" 544-3874  
Artist..... Elton Luckritz

**SUPER MEETING . . .**

continued from page 1

The Gordon Ballroom at the Troy Hilton was the scene. All the tables were situated around the four walls where displays on how, why, where and when to catch salmon and trout were manned by various experts of the club. Rod building, fly tying, fish smoking and egg curing were also demonstrated.

A very informative talk on river fishing was given by Tom Schneider. A comprehensive talk on lake fishing for trout and salmon was given by Paul Irvine and Larry Serafin. Larry and Paul spoke of various methods, where to go and what to use starting in April and progressing through October.

A big thanks for all the members who helped out. And a special thanks to Bruce Gibson for his idea to have the show, his leadership in arranging the details and his help in getting all the manufacturers to come.

We apologize for only one thing, and that was we did not expect such a large turnout and because of this the displays were very difficult for everyone to see. Next year arrangements will be such that everyone will have ample room to see all displays.

TURN TO PAGE 6 . . .  
FOR THE STORY IN  
PICTURES!

**COMING EVENTS**

- APRIL 24 — General Trout Opener
- APRIL 28 — Chapter Membership Meeting
- MAY 1 — Chapter Research Fishing Trip—Port Huron
- MAY 15 — Metro Beach Outdoors-Outdoors start
- MAY 21-22 — MSSFA Fishing Tournament — South Haven
- MAY 29 — Chapter Fishing Tournament— South Haven

**RAFFLE BOAT**



**BIG FISHING RIG DRAWING  
ON WEDNESDAY 28th**

The boat, motor, trailer and fishing equipment raffle package will be given away at this month's chapter meeting. The winner does not have to be present.

Three chapter members selling the most chances will also be given their prizes at the meeting. The awards will be specialized and the very best tackle.

Some chances are still available for purchase and can be

provided by Ed Raquel. Call him at 585-2232. Those members who still have tickets must return them or their value before 8 PM on the 28th.

The committee handling the raffle want to thank again all the super-salesmen and the contributors of the rig, Tom Iwaoka of Boat Mart and Chuck Cartwright. Also, Bob Rutt, who provided the initial funds. (The fund-raising event was a success!)

Charlie Cartwright and Tom Schneider man the booth at the Outdoorama Show.....

Photo by Don White



**Research Fishing Trip . . .**  
continued from page 1

shore above the stones, the fluorescent golden and orange Stren lines seem to be the best with 18" to 60" of light clear leader. The colored lines allow you to easily follow your line back if you hook-up on the stones. You will occasionally lose a lure on the rocks, but most of the time you can back up to get unhooked.

Good lures for this type of fishing are 1/4 & 1/3 oz. spoons such as Little Jewels, Devildogs, Cleos, Chargers, small plugs such as 2" Fire Plugs and Flatfish. Lure colors indicate chartreuse the best, followed by silver-blue and green combinations. Take along your Prisms and LusterLure tape and try different color combinations.

This is what research fishing is all about. Experiment, you might stumble onto something really hot! There will be a trophy for the biggest trout or salmon caught — going to the skipper of the boat and plaques for his crew.

Write or call Dave Gresham,  
3965 Maiden  
Waterford, MI 48095  
(313)623-6923  
Or sign up at the meeting.

**BOAT  
MART**

**REINELL BOATS  
TROLLING ACCESSORIES**  
27170 GRAND RIVER  
DETROIT, MI 48240  
538-2700

# Best Bets

## FISHIN' REPORT


Brown trout fishing has been excellent in Thunder Bay off the cement plant.

Coho and Splake are being caught in Marquette Harbor, near the power plant. Nice catches of Lake Trout and Salmon have been reported off St. Joe & South Haven, when weather permits. Steelhead runs are on beds in most rivers on the east and west coast. Some nice catches of Walleye are being taken on the Betsie River along with good steelhead & sucker.

In the UP good steelhead fishing reported in the Carp, Cholay, Iron & Harlow Creeks, and off the river mouths.

Smelt runs should be starting on both east & west side of the state. Good Steelhead fishing from the piers and river mouths all around the state with best success using spawn and blue & chrome and green & chrome small cleos or little jewels.

**RIVER TACKLE  
AND MANUFACTURING CO.**



Makers of the "TOMMY"  
Trolling Weight 313-585-2232

22500 33 Mile Rd.  
Armada, MI 48005


## SUPPORT OUR ADVERTISERS



**"MICHIGAN'S SALMON &  
STEELHEAD  
HEADQUARTERS"**

**ACME  
SPORT  
SHOP**

2924 N. WOODWARD AVE.  
ROYAL OAK 549-5353



**It's time to put new line on your reels**  
Clean and oil reels, repair worn line guides, and get the ole' boat and motor in shape. Don't forget to repack trailer bearings, check hitch and lights . . .

And most of all have a Good Year of Fishing !

Paul Irvine,  
Vice President

**SPECIALIZING IN BOAT INSURANCE  
ALLIANCE UNDERWRITERS INC.**

1700 N. Woodward Ave., Bloomfield Hills, MI 48013 - 645-1300

## MY OPINION

by John Makela

Last year we had ONE - this year the chapter plans TWO. Why not four or five research trips? More than a few Lake Huron communities would welcome the Steelheaders to their ports and each town would really help out with accommodations and publicity.

They realize the economic benefit of a four or five dozen boat invasion, and know the resulting fish catch will attract scores of other fishermen. The catch will give them some clout when dickering with the DNR for more fish plants in their area.

The chapter has to go out and find and catch those millions of fish planted in Lake Huron. Or maybe there won't be any more plants. Lake Huron is flat for the most part when compared to the other Great Lakes. The fish are just as catchable AND a lot closer to home.

Even though plants are smaller Lake Huron DOES have as many fish because it DOES NOT have as many fishermen or kill-nets. The towns would like to have us the DNR would love us for it - chapter members like to get together and all local fishermen would benefit when we find fish close to home. Let's have more research trips this year!

## BOARD OF DIRECTORS MEETING HELD APRIL 9

Chapter directors met at the home of Bob Rutt this month and decided to hold a directors meeting each month. The meetings will be held at the homes of different directors on the second Tuesday of each month.

The directors covered a long agenda including a vote to donate \$100 to the MUCC "Guns of Autumn" law suit brought against CBS news. Also a \$100 donation to the Lake St. Clair Advisory Committee to help in that group's efforts to preserve the St. John's Marsh near Anchor Bay.

They also voted: to provide revenue, if necessary, to sustain the costs of producing this newsletter; proceed with a study to determine costs of a chapter fishing HOT LINE; to examine the probability of a June Research Trip at Cass Lake; to encourage affirmative feed-back on a state MSSFA proposal to study a Steelheaders Fishing Derby in 1977.

The Directors voted in a motion to set aside required monies to purchase a boat, motor & trailer and equipment for a raffle next year. All agreed that the chapter's "First Annual Steelhead-Salmon Fishing Clinic" was a spectacular success and may be expanded next year.

For more details or information of directors meetings or club government, call any director.

|                   |          |
|-------------------|----------|
| Murrell Blackburn | 291-3881 |
| Ken Bonin         | 463-8394 |
| Chuck Cartwright  | 682-0855 |
| Dave Gresham      | 623-6923 |
| Tom Holland       | 725-1380 |
| Harry Levitan     | 294-3582 |
| Elton Luckritz    | 268-6698 |
| John Makela       | 583-1910 |
| Ed Raquel         | 784-9661 |
| Tony Recchia      | 881-4939 |
| Bob Rutt          | 644-1206 |
| Tom Schneider     | 755-5975 |

## HOW ABOUT A PITCHER ?

Fishin'Tales will attempt from this issue on to publish at least one full page of photographs. Chapter members are welcome (please?) to submit any fishin pictures. This is especially true if you have a story to tell about catchin the fish in the photo with your name and phone no. will be gratefully accepted. (we prefer black & white). Mail to the editor.

## STATE TOURNAMENT TRIMMED TO SIX

*NO GRAND  
CHAMPION THIS YEAR !*

The state steelheader tournament committee has finalized their 1976 schedule, rules and dates. Michigan City and St. Joe have declined participation in this years MSSFA tournaments, according to Andy Pelt, Committee chairman.

Andy also advised that most tourneys still have entries available and that rules can be obtained by writing to the chambers of commerce in each town. The entry fee is \$100 per boat. The \$10.00 surcharge originally planned for each entrant, for the purpose of rewarding the overall tournament winner, has been dropped. Possibly next year the tourney's will produce a "Michigan Grand Champion Tournament Fisherman".

Tournament dates are May 21-22 at South Haven, June 4-5 at Holland, June 12-13 at Frankfort, June 18-19 at Ludington, June 25-26 at Grand Haven and August 13-14 at Muskegon.

# TAXI II

**CHARTER SERVICE**  
TROUT - SALMON  
LAKES MICHIGAN & HURON  
Tackle Furnished U.S.L.G. Licensed

CAPT. DAVE GRESHAM  
313-623-6923  
3965 Maiden, Waterford, MI 48095

**NEW MEMBERS  
AND RENEWALS**

The ladies and gents listed below have invested in their fishing future by renewing their membership or by joining the Detroit Area Chapter, MSSFA.

**RENEWALS**

Dave Acheson, Huntington Wds.  
Paul Adesko, Troy  
Al Banas, St. Clair Shores  
Wm. D. Booth, Birmingham  
Jim Bugdalski, Warren  
Wm. J. Clack, Royal Oak  
Bob Crosby, Berkley  
R. C. Cross, Redford Twp.  
Howard Dixon, Ferndale  
John Evensen, Grosse Pte. Shrs.  
Wm. J. Fagan, New Hudson  
Mike Farabaugh, Livonia  
Otis Ferguson, Bloomfield Hills  
Walt Gable, Redford Twp.  
Steve Hamilton, Ann Arbor  
Kai Hansen, Birmingham  
Jim Hulet, Roseville  
Harold Kramer, Southfield  
Tom Lukosavich, Gr. Pte, Pk.  
Arthur MacLean, Livonia  
John Makela, Royal Oak  
Bart Misziak, North Street  
Stephen G. Mocerri, Oak Park  
Moyne Morris, Dearborn Hgts.  
L. C. Murphy, Drayton Plains  
Dennis Neely, Belleville  
R. W. Nicholson, Walled Lake  
Dan Potter, Hazel Park  
Al Pozniak, Madison Heights  
Ed Raquel, Armada  
Bob Scheppele, Plymouth  
Barry Schmittling, Whitmore Lk.  
Bill Shimman, Oregon, OH  
Gale Spallinger, Utica  
Buel Trapnell, Redford Twp.  
John Tymensky, Livonia  
John Voorhees, Milan  
Mike Walker, Royal Oak  
Jim Watson, Huntington Woods  
Chuck Willim, Allen Park  
Lonnie Wujcik, Garden City  
Guy Cable, Detroit  
Fred Cholewa, Detroit  
Walt Dudek, Detroit  
Jim Forgacs, Detroit  
Bradley Hoerauf, Detroit  
Peter Jackwin, Detroit  
Tom Jakubowski, Detroit  
Alexander Jefferson, Detroit  
Henry Kuczmariski, Detroit  
Stan Kudla, Detroit  
Joe Laczek, Detroit  
Jim McMurray, Detroit  
Ron Peckens, Detroit  
Paul Pelletier, Detroit  
Art Piotrowski, Detroit  
Stan Piotrowski, Detroit

**NEW MEMBERS**

Ron Anderson, Milford  
Elvin Bomaster, Berkley  
Mike Braidwood, Mt. Clemens  
Bill Brandt, Corunna  
Ed Brandt, Corunna  
Burl Brown, Capac  
Ron Brusseau, Westland  
A. P. Burger, Northville  
H. D. Caswell, Walled Lake  
Jim Copp, Ann Arbor  
Bob Cywinski, Wyandotte  
Chet Dopkowski, Southfield  
Keith Ege, Birmingham  
Howard Ellis, Lima, OH  
D. W. Erickson, Ferndale  
John Ferris, Waterford  
B. W. Gahan, St. Clair Shrs.  
Jerry Glidewell, Troy  
J. C. Haworth, Jr. Walled Lake  
Fred Hayworth, Royal Oak  
Curt Irish, Ann Arbor  
Jim Jennings, Ferndale  
Dan Jenuwine, Fraser  
Ray Johnson, Huntington Wds.  
Dennis Kapa, Royal Oak  
Gerald Kiefer, Farmington Wds.  
Don Kirchoff, Oak Park.  
Wes Klocke, Northville  
Sid Kolongowski, Melvindale  
Ted Kozakowski, Westland  
Bill Lafferty, Clawson  
J. G. Lujan, Troy  
Larry Lunetta, Gr. Pte. Wds.  
C. R. McMillin, Drayton Plains  
W. V. McNiece, Gr. Pte, Pk.  
Dick Martin, Ann Arbor  
Bob Martin, Drayton Plains  
Gene Miller, Centerline  
Mark Miller, Centerline  
John Miner, Kingsville, Ontario  
Bill Muirhead, Milford  
Gene Pasquantonio, Walled Lake  
Maurice Perreault, Roseville  
Richard Pikor, St. Clair Shrs.  
Gerald Priestley, Lincoln Park  
Conrad Proctor, Bloomfield Hills  
Ralph Puglise, W. Bloomfield  
Bob Ray, Roseville  
Keith Raymond, Roseville  
Ray Rebandt, Trenton  
Larry Rymal, Leamington, Ont.  
John A. Scott, Farmington Hills  
Dick Slovek, Gr. Pte. Pk.  
Ronald Spears, Brighton  
Dick Stehle, Utica  
Ron Summers, Birmingham  
Dick Swan, Clare  
Mike Tack, Madison Hgts.  
Rusty Tack, Madison Hgts.  
Tom Toole, Ypsilanti  
Gerry Tudball, Farmington  
Gary Uranis, Walled Lake  
Jim Veller, Birmingham  
Bob Veller, Birmingham  
Geo. Warner, East Detroit  
Mike Wawrzyniak, Sterling Heights

Mike Wheeler, Marysville  
Jim White, Northville  
Al Whitworth, Westland  
Wm. V. Wicka, Troy  
Roy Wolfe, Flint  
Joe Zalewski, Madison Hgts.  
Gerald Blanton, Pontiac  
Ralph Harper, Pontiac  
Mike McDonald, Pontiac  
Paul Strobel, Pontiac  
Jack Whiteside, Pontiac  
Ronald Hawring, Warren  
Oswald Houle, Warren  
Richard Lukas, Warren  
Wallace Uteg, Warren  
Richard Yagloski, Warren  
James Arnold, Dearborn  
Virgil Dahmen, Dearborn  
Nick Fleezanis, Dearborn  
Bill Lee, Dearborn  
Wilbert Nitz, Dearborn  
Clare Snider, Dearborn  
Dick Barber, Dearborn  
Bob Oziemski, Dearborn  
C. D. Wickham Jr., Dearborn  
Ed Beaumont, Garden City  
Jim Davidson, Garden City  
Norman Feliks, Garden City  
John Gaston, Garden City  
Tim Motzer, Garden City  
Zack Conley II, Livonia  
Tom Curry, Livonia  
A. Charbonneau, Livonia  
Mel Crawle, Livonia  
L.F. Lottinville, Livonia  
Bill Olynyk, Livonia  
Art Przysiecki, Livonia  
Charles Smith 3, Livonia  
M. J. Toutant, Livonia  
Chuck Burkett Jr., Detroit  
Stan Carroll, Detroit  
Ron Curnow, Detroit  
Don Fornell, Detroit  
John Gonzales, Detroit  
Frank Gray, Detroit  
Bill Hunter, Detroit  
Alex Kara, Detroit  
J. H. Keller, Detroit  
Andy Kremdosky, Detroit  
Dan Lynch II, Detroit  
John Messingschlager, Detroit  
Frank Mester, Detroit  
Bill Mitchell, Detroit  
Bernard Narot, Detroit  
Jerry Pociask, Detroit  
Jim Recchia, Detroit  
Paul Weaver, Detroit  
John Vella, Detroit  
George Zaker, Detroit

**The Cook's  
Corner**

**PICKLED (SPICED) FISH**

Soak fish in brine (1 cup salt to 1 gallon water) 60 min. Drain 10 min. Pack into hot 1 pint canning jars. Cover with spiced vinegar. Process 60 min. at 10 lbs. pressure or 3½ hours in hot water bath.

To make spiced vinegar: Mix 1 quart vinegar, 1 pint water, 1 piece horseradish, 1 pod red pepper, 1 small clove garlic, 1 teaspoon each whole allspice, cloves, mustard seed, and celery seed. Simmer 30 minutes. Strain and add 4 tablespoons olive, corn or cotton-seed oil.

**SUCKER RUNS**

Suckers provide alot of fun and meat to Michigan fishermen, especially at this time of year when the flesh is firm. They are a bottom-feeding fish found in deep holes, around windfalls and just below rocky, rapid areas of streams.

Suckers will hit a variety of baits, worms in particular, including spinners bounced off the bottom. Ed Raquel rarely misses when bumpin' corky's.

**PLANTS FOR  
"OUR SIDE"**

This is a partial list of some 1976 fish plants in Lake Huron.

- COHO — Tawas River, 100,000
- Ausable River, 200,00
- Huron River, 200,000
- KINGS — Harrisville, 150,000
- Ausable, 200,000
- AuGres River, 100,000
- Cass River, 100,000
- Harbor Beach, 100,000
- Detroit River, 200,000
- Huron River, 100,000
- STEELHEAD — Ausable, 35,000
- Whitney Drain, 5,000
- Rifle River, 10,000
- Pinnebog River, 50,000
- Detroit River, 20,000
- BROWNS — Ausable, 10,000
- Whitney, 10,000
- Tawas Bay, 10,000
- Grindstone, 20,000
- Harbor Beach, 20,000
- Port Sanilac, 10,000

**BELLE ISLE  
BAIT**

SPECIALIZING IN  
FISHING TACKLE,  
WORMS — MINNOWS

36519 Gratiot, Mt. Clemens  
2 bks. S. of Metro Parkway  
791 4510

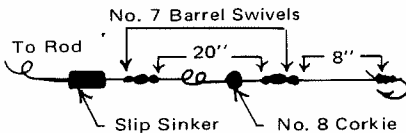
10% Discount to Steelheaders  
on \$5.00 purchase

# SHORE FISHING FOR SPRING TROUT

Tom Schneider

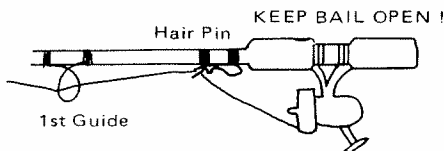
Spring presents a fine opportunity for the fisherman to catch large trout without the use of a boat. One method is using spoons and spinners. Your nine foot rod will be excellent for this. I recommend long casts from shore and giving a count of ten to allow your lure to sink. The retrieve should be very rapid. This is very important. I do not retrieve a lure with a jerk or a twitch. Very simply stated, a fast retrieve works best for me. The lures I recommend are Devil Dogs in blue and silver, Little Cleos in red and gold, white with bluish red, Little Jewels with prism tape. For spinners, I use rooster tails in both yellow and the coachdog colors.

Bait fishing is a great way to catch spring trout. I use a special rig to hold my bait off the bottom. The rig uses the ole' slip-sinker, two barrel swivels, and a corkie to keep the bait off the bottom. The sketch below will help you understand the rig.

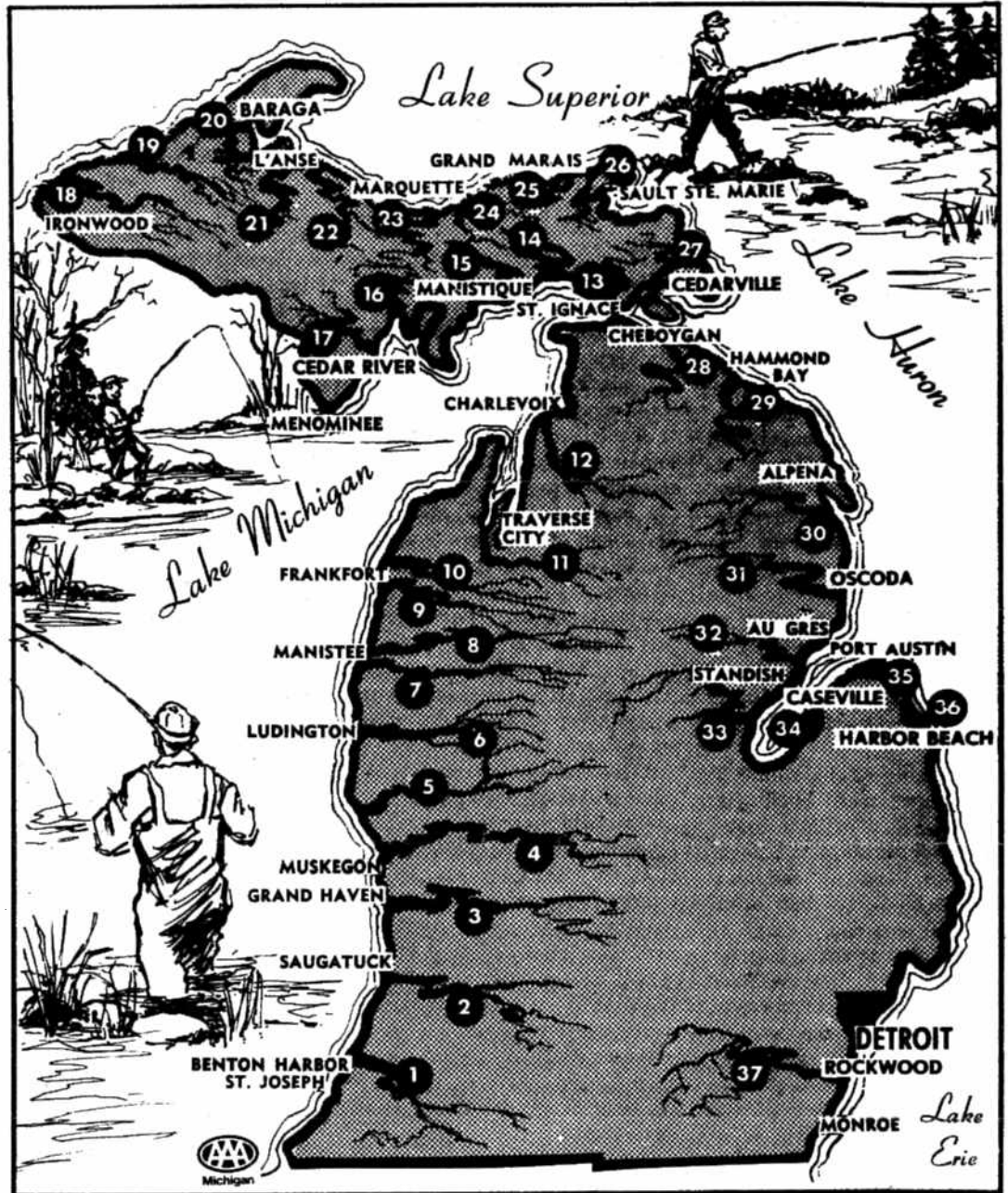


The baits I use are nitecrawlers, raw chuck spawn, single eggs, and whole kernel corn. Nite crawlers are best for browns and single eggs or chunk spawn for the steelhead. Try chumming with corn.

An important part of the slip sinker rig is to use an open bail. It allows the fish to pick up the bait without feeling any resistance. In order to do this and still maintain some control over my line, I tape a hairpin to my rod near the handle and run my line through it. The sketch below will explain.



Allow the fish to run with the bait for a short while, then close the bail and reel gently until you feel the fish, set the hook and fish on. The rest is up to you. I will demonstrate this at the next meeting.



## YOUR 1976 STEELHEAD GUIDE

**RIVER**

- 1 - St. Joseph River
- 2 - Kalamazoo River
- 3 - Grand River
- 4 - Muskegon River
- 5 - North Br., White River
- 6 - Pere Marquette River
- 7 - Little Manistee
- 8 - Big Manistee River
- 9 - Betsie River
- 10 - Platte River
- 11 - Boardman River
- 12 - Jordan River
- 13 - Brevort River
- 14 - Black River
- 15 - Manistique River
- 16 - Whitefish River
- 17 - Big Cedar River

**UPSTREAM LIMIT\***

- Buchanan Dam
- Allegan Dam
- Webber Dam
- Croton Dam
- Arthur Rd.
- M37 Bridge
- Johnson's Bridge
- US131
- Kurick Rd.
- US31 Bridge
- Cass Street Dam
- Webster Bridge
- Brevort Lake
- Peter's Truck Trail Brdg.
- Paper Mill Dam
- Headwaters
- Veterans Park Dam

**RIVER**

- 18 - Black River
- 19 - Presque Isle River
- 20 - Sturgeon River
- 21 - Falls River
- 22 - Huron River
- 23 - Anna River
- 24 - Miners River
- 25 - Sucker River
- 26 - Two Hearted River
- 27 - Carp River
- 28 - Cheboygan River
- 29 - Ocqueoc River
- 30 - Thunder Bay River
- 31 - Au Sable River
- 32 - East Br. Au Gres River
- 33 - Rifle River
- 34 - Caseville Harbor
- 35 - Port Austin Harbor
- 36 - Harbor Beach Harbor
- 37 - Huron River

**UPSTREAM LIMIT\***

- Rainbow Falls
- Manbezho Falls
- Prickett Dam
- US 41
- Big Eric's Bridge
- Railroad Bridge
- Falls
- Deer Park Truck Trail
- Reed & Green Bridge
- Mud Lake Outlet
- Cheboygan Dam
- Barnhart Lake
- 9th St. Dam
- Foote Dam
- M55 Bridge
- Sage Lake Rd.
- Flat Rock Dam

\* Upstream limits denote man-made barriers to spawning fish or those imposed by state Department of Natural Resources.





Photo by Don White

Tony Recchia watches while Paul Irvine and Larry Serafin talk about lake fishing for trout and salmon, where to go and what to use.



Tom Schneider shows hook tying methods in front of the crowd.

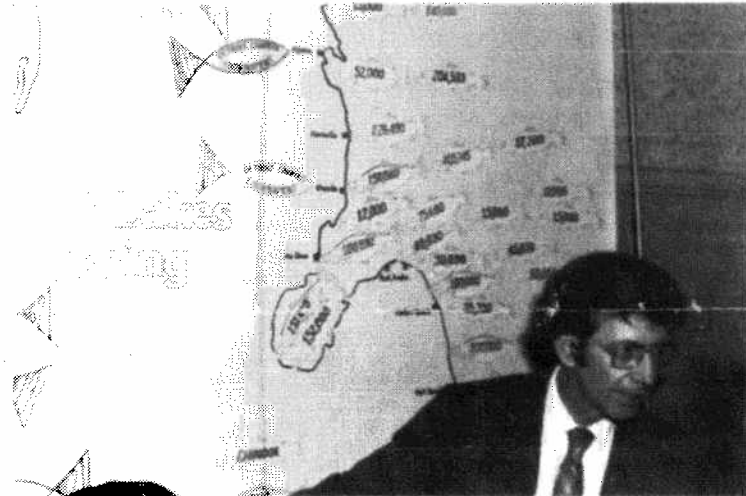
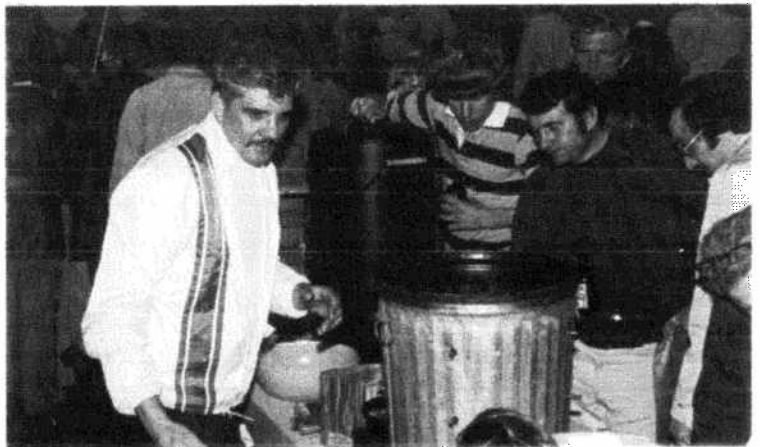


Photo by Mark Lattimore

Elton Luckritz explains fish plant map and harbor guide.



John Makela and Gale Spallinger at trolling equipment booth.



Tom Holland demonstrates home-made fish smoker.



**TACKLELAND**  
 ONE OF THE WORLDS  
 FINEST DISPLAYS  
 OF FISHING TACKLE

\* FREE FISHING LICENSES  
 FOR RESIDENTIAL  
 SENIOR CITIZENS

**383-3244**  
 18800 DIX., MELVINDALE Between Oakwood & Outer Dr.

**K & M**  
**BOAT CO.**

14950 TELEGRAPH RD.  
 DETROIT, MICHIGAN 48239

313 / 538-2220



**ALL MODELS  
 IN STOCK**



"Raffle Ticket Champions" are Bill Jewett and Duane Myers.

# Membership Application

Membership includes = Free Line for Two Reels, Chapter Newsletter, State Newsletter, Boat Decal, Car Decal, Arm Patch, Annual Guide Book, Membership Card.

- Chapter Dues — \$ 5.00  
(State MSSFA Membership required)
- Chapter & State Dues — \$12.00

NAME \_\_\_\_\_

ADDRESS \_\_\_\_\_

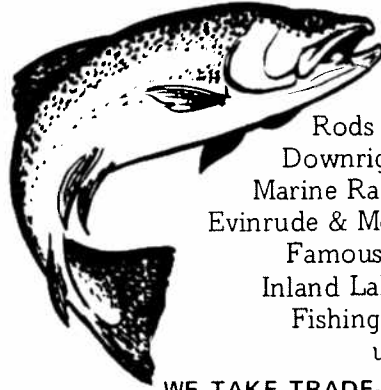
CITY \_\_\_\_\_ STATE \_\_\_\_\_ ZIP \_\_\_\_\_

COMPLETE FORM AND SEND WITH CHECK

OR MONEY ORDER PAYABLE TO: DETROIT AREA CHAPTER  
P.O. Box 594  
ROYAL OAK, MI 48073

THANK YOU!

## BYRD MARINE



Discount Prices on EVERYTHING

- Rods — Reels — Lures
- Downriggers — Outriggers
- Marine Radios — Fish Locators
- Evinrude & Mercury Outboard Motors
- Famous Alumacraft Boats
- Inland Lake OR Great Lake Fishing & Pleasure Boats up to 26 ft.

WE TAKE TRADE-INS  
COME OVER AND GET AQUAINTED

"A One Stop Shop for All your Needs"

2707 Telegraph — Dearborn  
565-7574 565-5330

(South of Michigan Ave., North of I-94)

## WANT ADS Tackle Trader

FREE LURE TAPE SAMPLES Hot fluorescents, "NiteLite", NOW SIX PRISMS! Thirteen colors, wholesale newsletter. Send large self-addressed stamped envelope: LusterLure, Box 1235-FT, Berkley MI 48072.

FOR SALE — Four Riviera downriggers, Bimini FM 12+2 radio, 18-HP Johnson motor, Call 682-3864.

DECALS — BOAT STRIPING Labels, Trim, Pressure sensitive identification, decoration. Interior/Exterior. Visioneering (313) 583-1910

FOR SALE — 1972 BOSTON WHALER, 115HP Mercury OB 16 Ft. 7 in. Pamco Trandom Trailer, Many Extras ! \$4500 (313) 624-4426.

For members to buy-sell-trade sporting goods. 10C per word payable with order. \$2.00 min.

**TOLL FREE DNR HOTLINE 1-800-292-7800**

The DNR has established this HOT LINE PHONE NUMBER to report suspected violations of fish and game laws. Use it, write it down and put it in your wallet or near your phone.

### HOUSE OF BEDROOMS

A PLACE TO SAVE  
A BUNDLE  
1716 S. TELEGRAPH RD.  
BLOOMFIELD HILLS, MI.  
BOB GOLDMAN —  
334-4593

### CUSTOM RODS

"You owe one to yourself"  
**DICK SWAN**  
3230 Oakland, Clare, MI 48617  
(517)-386-3220

Salmon-Steelhead Shooting Rods Up to 14' Spin-Fly Combination Fighting Handle

**NEW U.S. RECORD**  
57½ Lb.  
Lake Trout  
Caught on a No. 4 CHARGER

### A CHAPTER BOAT DIRECTORY By Murrell Blackburn

In our travels around the state we see many trollers from the Detroit Area Chapter. Some we know, some we don't. A boat directory would help us recognize boat names wherever we are. It's nice to see someone from the chapter and when you are on the water it's a good feeling to have a boat you can call on if help is needed. Don't be afraid to call on the radio and inquire about the fishing because this is what the club is all about. You'd be surprised at the number of new friends you can make and the fishing knowledge you pick up is amazing.

So, let's get it together. Send your name, address, phone no., size, make, color and name of boat, FM or CB radio and areas you fish. Mail to:  
23353 Wohlfiel  
Taylor, MI 48180

or drop it off at the membership table at the meeting this month. Let's get active and participate to make this operation work for us. We'll have fun and catch more fish too. The directory will be published in, or sent with, the newsletter upon completion.

### SPRINGTIME TROLLING

It's been a long winter for the fish tool. April isn't too early to start trolling. Jack-coho are going nuts right now in southern Lake Michigan. Jack-kings, steelhead and browns are now being caught from the St. Clair river north to the Thumb. Browns and rainbow are real active in Thunder Bay. The east arm of Grand Traverse is yielding browns in 30-40 feet near Acme. Swedish pimples are producing lakers in 150' in the same bay. Six to nine inch perch are being taken by boaters in Anchor Bay. And it's not mid April yet. This isn't a fishing report, but on Lake Michigan spring trolling starts early in Michigan City north to St. Joe where it continues to be a hot spot when the lakers come in.

Easter weekend is usually productive for browns, rainbow and splake in Thunder Bay.

When you hear or read about the tugs and thugs setting their kill nets in northern Lake Michigan you know trolling time is here for the legal fisherman.

**SUPPORT OUR ADVERTISERS**

**MICHIGAN STEELHEAD AND SALMON  
FISHERMEN'S ASSOCIATION**

**DETROIT AREA CHAPTER**

2818 VINSETTA BLVD.  
ROYAL OAK, MICHIGAN 48073



Non-Profit Organization

**U.S. POSTAGE  
PAID**

Permit No. 289  
Royal Oak, Michigan

ADDRESS CORRECTION REQUESTED



576-1051  
PROMPT - DEPENDABLE - QUALITY  
**PDQ INSTANT PRINTING**

4322 N. WOODWARD AVE. • ROYAL OAK, MICH. 48072

BULLETINS CATALOGS ENVELOPES  
BUSINESS CARDS NEWSLETTERS NCR FORMS  
WEDDING INVITATIONS POSTCARDS

LYTLE RUSSELL

NEIL RUSSELL

**ACME BOAT**

STARCRAFT BOATS      JOHNSON MOTORS

23520 WOODWARD      E-Z LOADER  
FERNDALE      TRAILERS

542-4851      10% Off to all Steelheaders

**HOW ABOUT A  
STEELHEADER  
DERBY ?**

MSSFA publicity chairman Andy Pelt wants some local feedback on the possibility of a 1977 fishing derby. Dates and length of such an event are open, but May 1 thru September has been suggested.

Lake Huron would be included in such a derby which will be discussed at the state MSSFA board of directors meeting this month. If board approval is given, a committee, including local chapter members, will meet in December to work out the details.

Andy mentioned a \$10 fee with a top prize of \$10,000, depending on the participation. Some tackle firms have expressed interest in promotional help and matching prizes.

What do you think? Contact any chapter director.

**SUPPORT OUR  
ADVERTISERS**

**TAPE HANDY**

One of the handiest items a fisherman can carry in his tackle box is a small roll of plastic electrical tape.

It can effect temporary repairs on many items of fishing, boating and camping gear. It can be used to repair inflatable items and waders.

A small piece of the tape will keep the line from unwinding from spinning, casting or fly reels.

Most of the better brands of tackle boxes have special compartments for odd-shaped items such as a roll of tape.

**LOCAL TROUT  
STREAMS**

1976 designated trout streams in Oakland and Macomb counties from April 24 thru Sept. 30:

Kearsly Creek, Duck Creek, Highbanks Creek, Paint Creek, Trout Creek, Gallagher Creek, Huron River, East Pond Creek and North Branch Clinton River. Consult your 1976 Fishing Guide for boundaries.

**TWO BILLION POUNDS  
OF FISH** (Ralph Hay)

If one large male and female bass were placed in a one acre pond with an average depth of five feet and produced a normal number of young, and if all the offspring survived for three generations (considering that only half (female) would lay eggs), about 2 billion fish would result. If the fish averaged one pound each, there would be two billion pounds of bass in the pond. The described pond would contain about 14 million pounds of water. From this one pair of bass with complete survival for three generations, the fish would be piled about 715 feet above the original level of the pond.

**ENVIRONMENTAL  
HOTLINE 1-517-373-7660**

You can help keep Michigan a cleaner, more pleasant and attractive place to live and play. This number is a 24 hour alert system to report any type of pollution, new or old. If it's dirty or stinks, an oil slick or dredging or filling - report it. It may be a toll call, but it's worth it.

**MEMBERSHIP  
EXPIRED ?  
TO RENEW . . .**

Take a look at the label that brought you this issue. If the numbers are 4/76 or 5/6 you'll find a renewal letter and application enclosed. Avoid the tragedy of missing a single issue of "Fish-in Tales", re-up now. You can mail where indicated or join at the meeting. If your label number was 3/76 last issue, you won't be reading this unless you renewed.

**A THOUGHT FOR  
THE DAY !**

It's been suggested that a bounty be placed on the lamprey eel. The outlaws with their kill nets could make a fortune and leave the fish for the sportsman.

LARRY SERAFIN  
313-537-6926

**FINISH CARPENTER  
AVAILABLE**

ADDITIONS  
BASEMENTS  
SIDING KITCHENS