

MICROTRAK™ 4

HIGH SPEED DIGITAL LASER DISPLACEMENT SENSOR

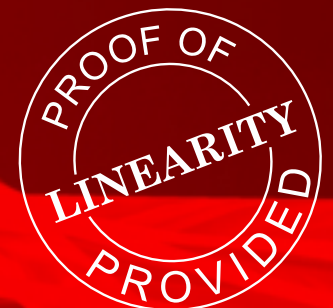
- RANGES
- FROM 2mm
- TO

200mm

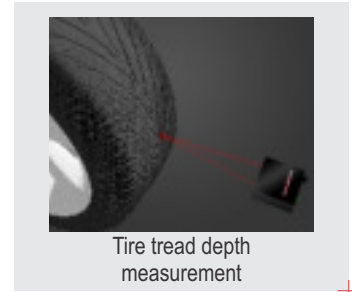
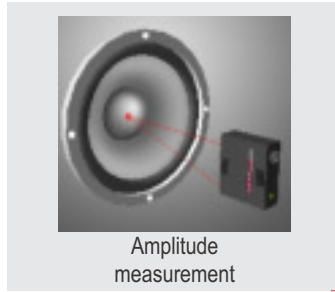
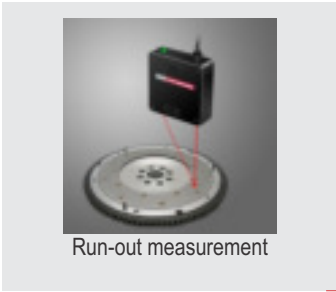
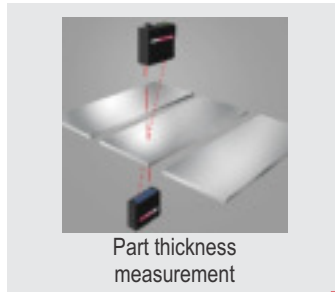
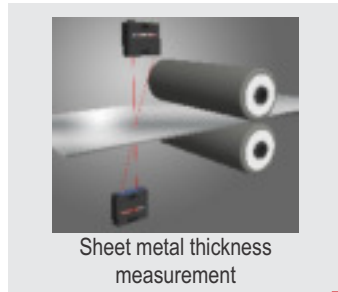


- Direct power from USB port
- ~40kS/sec. CMOS sensor full frame rate
- Included Software Development Kit (NI LabVIEW, DLL and .NET)

Accurate and repeatable measurements from highly reflective to dull surfaces



with every system shipped!



No External Controller Needed - Out of the box, the MTI basic program runs on your PC to make measurements. Intuitive and straight forward buttons makes configuring and acquiring data simple.

Software Development Kit Included - for custom programs used by system integrators.

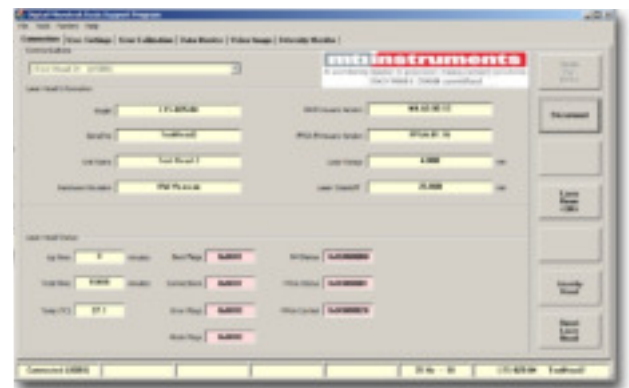
Visible Laser Spot - Allows for easy positioning and alignment of the laser head.

Easy Setup - With the built-in 5-color position indicator, there is no need for an external controller to determine the laser mounting location and attain the precise distance placement.

Built-in Low Pass Filters

Auto Gain Circuitry - Automatically determines and adjusts the ideal laser power needed for accurate and repeatable measurements on different surface types.

Cut-Time Feature - Ignore holes and cutouts with its bridging function.



Reliable measurements for very dark or very shiny (mirror-like) targets - using available 2X exposure function

Plug and Play USB 

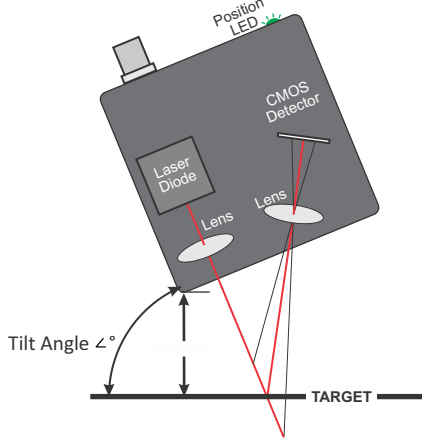
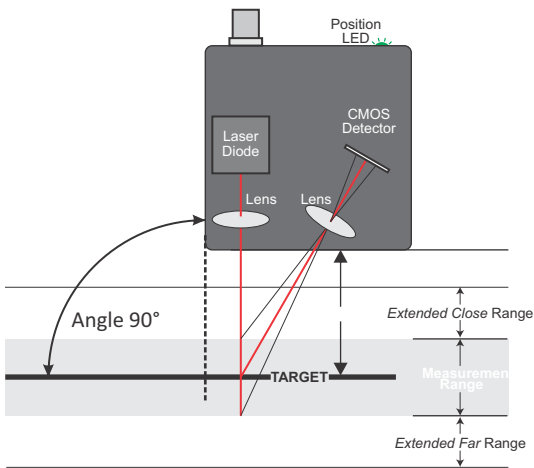
No separate power supply needed

All digital output

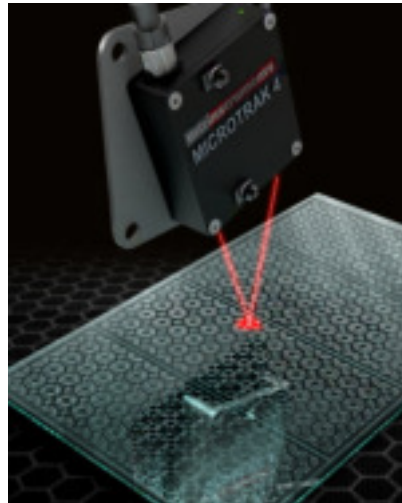
Applications

- Thickness
- Warpage
- Alignment
- Displacement
- Vibration
- Step Height
- Shaft Run-out
- Road Profile
- Presence
- Fill Height
- Flatness
- Profiling
- Thermal Expansion/ Contraction
- Structural Dynamics
- Dimensional Gauging

| | | | | | | | | | |
|-----------------------------------|--------|---------|------|-------|------|-------|-------|-------|-------|
| Standard Range | mm | 2 | 4 | 10 | 20 | 20 | 40 | 100 | 200 |
| Standoff | mm | 25 | 25 | 50 | 50 | 120 | | 200 | 300 |
| Displacement | | | | | | | | | |
| Close Extended Mode | mm | 23.75 | 22.5 | 43.75 | 37.5 | 107.5 | 95 | 137.5 | 175 |
| Close Standard Mode | mm | 24 | 23 | 45 | 40 | 110 | 100 | 150 | 200 |
| Far Standard Mode | mm | 26 | 27 | 55 | 60 | 130 | 140 | 250 | 400 |
| Far Extended Mode | mm | 26.25 | 27.5 | 56.25 | 62.5 | 132.5 | 145 | 262.5 | 425 |
| Linearity (standard range) | | | | | | | | | |
| 1X exposure, 20kHz | % FSO | 0.0375% | | | | | | | |
| 2X exposure, 5kHz | % FSO | 0.0300% | | | | | | | |
| 1X exposure, 20kHz | µm | 0.75 | 1.50 | 3.75 | 7.50 | 7.50 | 15.00 | 37.50 | 75.00 |
| 2X exposure, 5kHz | µm | 0.6 | 1.2 | 3 | 6 | 6 | 12 | 30 | 60 |
| Noise (2X, 500Hz) | | | | | | | | | |
| At standoff to white | µm RMS | 0.125 | 0.25 | 0.625 | 1.25 | 1.25 | 2.5 | 6.25 | 12.5 |
| Spot Size | | | | | | | | | |
| Major at standoff | µm | 30 | 30 | 25 | 25 | | 100 | | 130 |
| Maximum Resolution | nm | 38 | 76 | 191 | 381 | 381 | 763 | 1,907 | 3,815 |



| | | | | | |
|-----------------------|----|---------------|---------------|---------------|---------------|
| Model | | DTS-025-02/S | DTS-025-04/S | DTS-050-10/S | DTS-050-20/S |
| Product # | | 8000-7040-001 | 8000-7032-001 | 8000-7033-001 | 8000-7034-001 |
| Standard Range | mm | 1.8 | 3.7 | 9.7 | 19.3 |
| Stand-off | mm | 16.7 | | 44.0 | |
| Tilt Angle | ∠ | 67.5° | | 75° | |



| | | |
|-----------------------|---------------|-------|
| Model | DTS-025-04/G | |
| Product # | 8000-7032-002 | |
| Standard Range | mm | 3.7 |
| Stand-off | mm | 16.7 |
| Tilt Angle | ∠ | 67.5° |

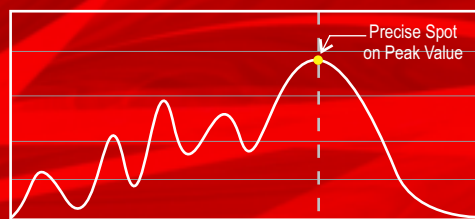
*Linearity is defined as the peak measured variation, using bandwidth limited data, from the best fit linear line constructed from all the points taken over the full scale range.

++ Please refer to the Users Manual for complete instructions for mounting specular heads.

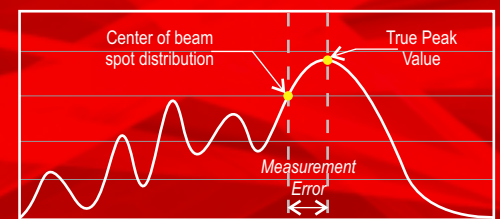
MICROTRAK™ 4 uses Highly Precise CMOS Technology

The Microtrak™ 4 laser displacement sensor head is the ideal solution for quality and process control applications. Using the latest CMOS technology, the Microtrak™ 4 precisely monitors the intensity of light received on a pixel array and optimizes itself to the sensed conditions.

Accurate advanced CMOS sensor



Errors occur using competitive PSD sensors





(1) MICROTRAK™ 4
Laser Sensor Head



(1) USB drive
Software, Manual & Drivers

USB/Power cable is available as a separate item. Please check optional accessories for length selections.



USB/Power Cable

| | |
|----------|---------------|
| 2 meters | 8000-7020-002 |
| 4 meters | 8000-7020-004 |



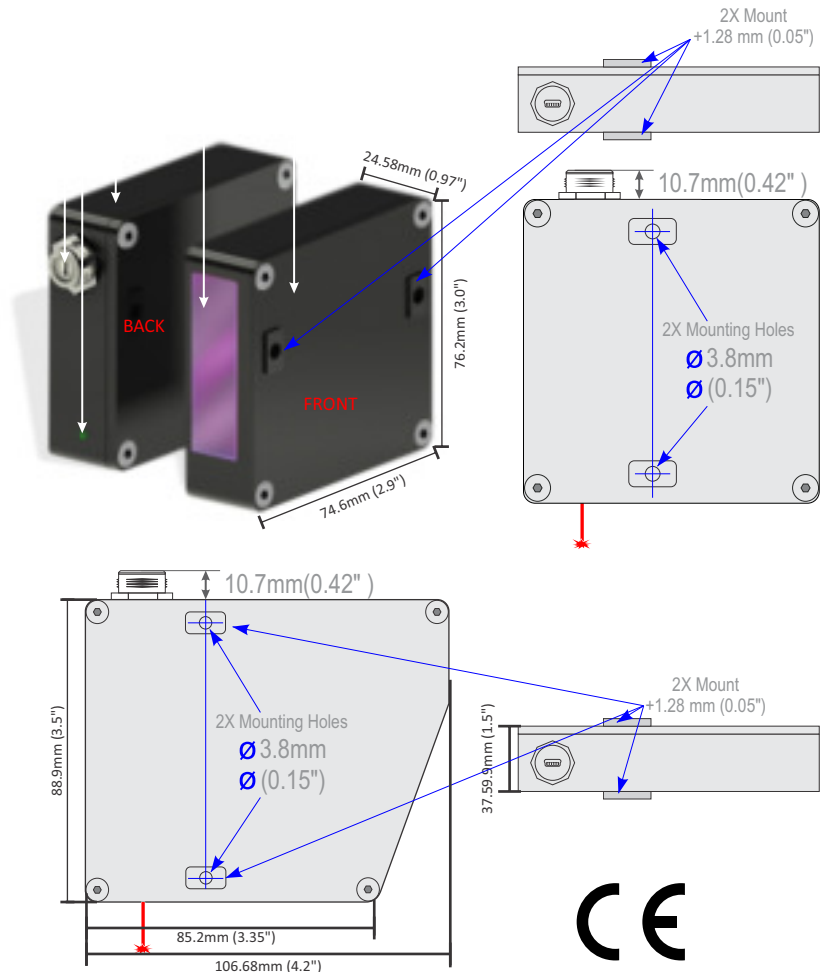
FS-5 Laser Head Mount
and Positioner
P/N: 8000-6725



FS6-1 Right Angle Bracket
(25/50) P/N: 8000-6431

FS6-2 Right Angle Bracket
(120/200/300) P/N: 8000-6432

| | |
|------------------------------------------|------------------------------------------------|
| Maximum Sampling Rate | 40k (38277.5) Frames/s |
| Exposure Time | |
| 1x | 25 μ s |
| 2x | 50 μ s |
| Filter | 0.1Hz to 20kHz (1st order, exponential) |
| Practical Maximum Bandwidth | 15kHz |
| Interfaces Supported | |
| Digital | USB2.0 |
| Analog | None |
| Supported Datarates | 100, 200, 500, 1k, 5k, 10k, 20k, 40k Samples/s |
| Software | |
| MicroTrak™ 4 Basic | Windows® 7, 8, 10 |
| Supported Interface Software | |
| DLL | Windows® 7, 8, 10 |
| .NET | Windows® 7, 8, 10 |
| LabVIEW™ | Windows® 7, 8, 10 |
| Laser Wavelength | 630nm to 670nm |
| Maximum Power Level (factory set) | |
| Maximum | 4.9mW |
| Typical | 2mW |
| Laser Power Class | 3R IEC60825 |
| Nominal Supply Voltage | |
| SELV from USB2.0 | 5 V |
| Maximum Supply Ripple | 100 mVpp |
| Nominal Supply Current | 100 mA During Enumeration |
| Nominal Supply Current | 500 mA During Operation |
| Maximum Power Draw | 2.25 W During Operation |
| Intrusion Protection | IP67 IEC60529 |
| Operational Temperature Range | 0 to 40 °C |
| Storage Temperature Range | -20 to 70 °C |
| Humidity | 5 to 95 % Non-Condensing |



MTI Instruments, Inc.

325 Washington Avenue Extension
Albany, NY 12205-5505

PH: +1-518-218-2550

OR USA TOLL FREE: 1-800-342-2203

FAX: +1- 518-218-2506

EMAIL: sales@mtiinstruments.com

www.mtiinstruments.com

mtiinstruments

A subsidiary of Mechanical Technology, Inc.(MKTY)