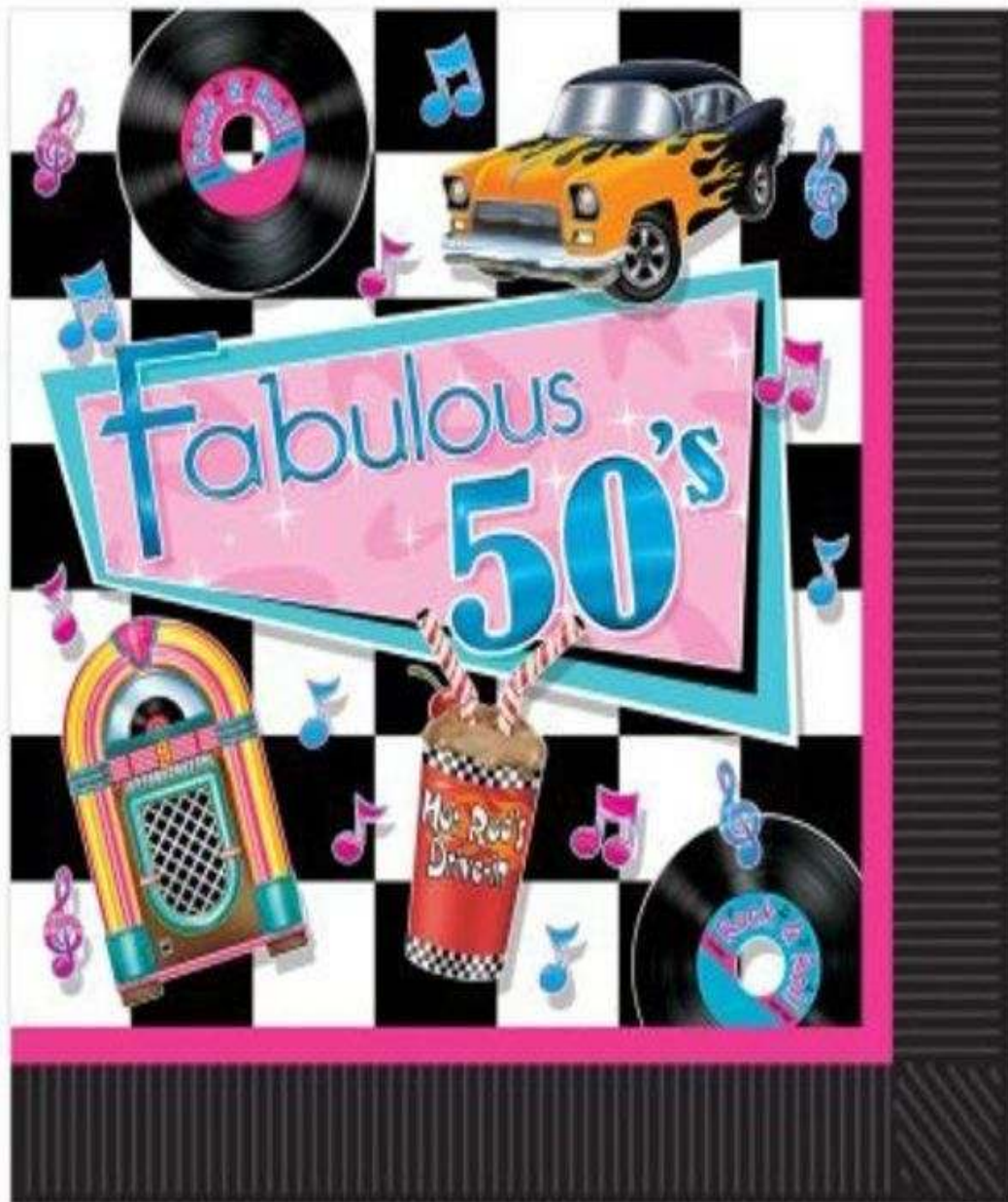


African Violet Council of Florida

2018 Presents

VIOLET VIBES IN THE



October 4-6, 2018
HILTON GARDEN INN
3839 Don Emerson Drive
Lakeland, FL

AVCF Officers

President – Jim Boyer
First Vice President – Carolee Carter
Second Vice President – Elvie Blakely
Recording Secretary - Bobbi Johannsen
Corresponding Secretary – Debbie Wesch
Treasurer – Sharon Gartner
Newsletter Editor – Peggy Madison

Show Committee

Convention Chair – Mary Jane DiLorenzo
Show Chair – Thad Scaggs
Awards – Carolee Carter
Awards Ribbon Purchaser – Phyllis King
Design Schedule – Mary Lou Harden
Design Reservations – Mary Lou Harden
Education/AVSA Information Exhibit – Carol Chmiko
Entries – Jim Boyer
Focal Point – Kurt Jablonski

Horticulture Schedule – Phyllis King
Hospitality – Thad Scaggs
Judges & Clerks – Jim Boyer
Plant Placement – Carol Chmiko
Plant Sales – Debbie Wesch
Properties – Mary Lou Harden
Publicity – Belinda Freer & Carolyn Haug
Silent Auction/Chinese Raffle - Linda Price
Show Plants Sales – Debbie Wesch
Staging – Thad Scaggs & Debbie Wesch



Sold show plants may be removed from the show at 2:00 p.m.,
Member exhibits at 3:00 p.m. on Saturday October 6, 2018

GENERAL RULES

1. Only members of the African Violet Council of Florida and its affiliates are eligible to enter exhibits in the show.
2. The latest edition of the *AVSA Handbook for African Violet Growers, Exhibitors and Judges* will be the authority for any cases not covered by specific rules in this schedule. Qualified AVSA judges using the merit method of judging will judge the exhibits. The judging of the show will begin at **9 a.m. on Friday, October 5, 2018**
3. Horticultural and Design entries must be made between **3 p.m. and 9 p.m. on Thursday, October 4, 2018. Entries for convention workers only will be from 1 p.m. to 3 p.m. on Thursday, October 4, 2018.**
4. Each exhibitor is required to present a completed Exhibitor's List of Entries (Exhibit E) to the Classification reception table receptacle, sign in on the sheet provided and pick up their call-back number during the designated hours for entries. Entry forms must be filled out in pencil in case any corrections are necessary. (See Exhibit D of the Convention Manual for complete instructions.)

Each Exhibitor wishing to sell his/her show plants must submit a Show Plant Sales Form (Exhibit F) at the time of entering his/her plants, listing the names of the plants and the price of each plant the Exhibitor wishes to receive. After Entries, the Exhibitor gives the form to the Show Plant Sales Chair.

5. If someone other than the owner enters exhibits for the owner, the name of that person must be listed on the back of the Exhibitor's List of Entries form (Exhibit E).
6. Entries must be correctly named, or they will be subject to correction by the Classification Committee.
7. Only clean, healthy plants will be accepted. Plants entered in the Horticulture Division must have been in the possession of the Exhibitor for at least three months.
8. All African violet plants entered (except trailers and species) must be single-crowned. All African violet plants must be in bloom.
9. Double-potting, flared-top pots, supports and collars will not be accepted. Self-watering pots such as Moist-Rite and Oyama, etc., may be entered in colors such as white, black, green or any other neutral tone. All other plants must be slip-potted into neutral-colored pots such as white, green, black, etc. ("Slip-potting" means dropping the pot containing the plant into a clean pot of the same or just a fraction larger-sized pot.) It is recommended that plastic or aluminum foil be placed in the bottom of the outer pot to prevent leakage onto the table covering. Exceptions: trailers, trailing species and other Gesneriads may be exhibited in the container in which they are growing. The pot must be clean.
10. Protective covers, mulches and unobtrusive stakes are permitted for Gesneriads other than African violets.
11. Gesneriads entered in Classes 48 and 49 must have some special quality of foliage, coloring, texture, growth habit, etc., and not just be a Gesneriads out of bloom.
12. Exhibitors may enter only one plant of each variety in each class but may enter more than one variety in a class.

13. Only AVSA members may enter plants in Classes 1 and 2 and must present a current AVSA membership card displaying the membership number. Exhibitors must provide plant Registration numbers. An Exhibitor may enter only one collection in each Collection class.
14. Only DAVS members may enter in Classes 3 and 4 and must present a current DAVS membership card displaying the exhibitor's membership number. Exhibitors must provide plant Registration numbers. An Exhibitor may enter only one collection in each Collection class.
15. Any African violet entered in a collection is eligible for all special awards.
16. Exhibits in Classes 37 and 38 must not have been shown at a prior AVSA convention show. The Exhibitor must have originated the seedlings, or the right to them must have been released in writing by the originator to the Exhibitor. Plants grown from purchased seeds are the property of the grower. It is not necessary to obtain permission from the seed's producer. Sports and mutants will be exhibited as "Sport of _____." If it has been named, the name will follow in parentheses.
17. "Best in Class" shall be chosen from the blue-ribbon winners in each class. "Best in Section" shall be chosen from the blue-ribbon winners from each class in the section. Only blue-ribbon winners are eligible for special awards.
18. Entries in Class 39 must be planted in an unusual, novel or decorative container. It is not required for the entry to suggest the show theme. Only one entry per person.
19. The names of Exhibitors shall remain covered until all special awards have been chosen.
20. **The show will be open on Friday, October 5, 2018, from noon to 6:00 p.m. and on Saturday, October 6, 2018, from 10:00 a.m. to 3:00 pm.**
21. Exhibits may not be altered or **removed** from the show area until **3:00 p.m. on Saturday, October 5, 2018**. AVCF will provide reasonable protection for the exhibits but will not be responsible for any damage or loss.
22. A **"Novice"** is an Exhibitor who has never won a blue ribbon in the Horticulture Division in any AVSA judged show.
23. Commercial members may enter any class.



DESIGN DIVISION RULES

1. An Exhibitor may have only one entry in each class. Exhibitors must complete the Exhibitor's List of Entries form (Exhibit E) for their designs and follow General Rule #4 above.
2. Reservations must be made by **September 28, 2018, by phone or email, to Mary Lou Harden, Design Reservations Chair, 813-924-2686 or mlhard@verizon.net.**
3. Classes are limited. Space will be reserved as available. The Design Chair will verify your reservation space(s). Notify the Design Chair immediately if it is necessary to cancel your reservation.
4. All entries in the Design Division must have a 3" x 5" card listing the African violet varieties and other plant materials used, if known. A subtitle or written interpretation of the design may be provided on a separate 3" x 5" card but is not required.
5. All designs must be the creation of the Exhibitor and must be entered and placed by the Exhibitor.
6. A "Novice" is an Exhibitor who has never won a blue ribbon in the Design Division in any AVSA judged show.
7. Exhibitors will be permitted to work on their **designs on Thursday, October 4, 2018, from 3 p.m. to 10:00 p.m. after completing the entry process, and on Friday, October 5, 2018, from 7:00 a.m. to 8:45 a.m.**

All design Exhibitors and their materials must be out of the show area by 8:45 a.m.

To Enter Designs:

1. Complete the Exhibitor's List of Entries form (Exhibit E) for your designs and present it to the Classification reception table to receive an Exhibitor Number during the designated hours for entries.
2. **Entries may be made on Thursday, October 4, 2018 from 3:00 p.m. to 9:00 p.m.** The Design Chair will assign the space in the show area designated for your design.
3. **Make sure that a 3" x 5" card accompanies each exhibit** in the Design Division classes. See Rule 4 under **DESIGN DIVISION** in the show schedule.
4. **After Entries has entered your design entry and given you the Entry Card, you may enter the show area to work on your design. See Rule 7 under DESIGN DIVISION for times.**

TO CLAIM PLANT AND DESIGN EXHIBITS AT THE CLOSE OF THE SHOW:

All exhibits must be removed promptly at the close of the show on Saturday October 6, 2018, at 3:00 p.m.



Horticulture Division

Section I – Collections

- 1 **AVSA** Collection of three different registered **standard** varieties of the same type (three single-crown or three trailers) or three different species regardless of type
- 2 **AVSA** Collection of three different registered **miniature or semiminiature** varieties of the same type (three single-crown miniatures, three miniature trailers, three single-crown semiminiature, or three semiminiature trailers)
- 3 **DAVS** Collection of three different Dixie registered standard varieties of the same type (three single-crown or three trailers)
- 4 **DAVS** Collection of three different Dixie registered miniature or semiminiature varieties of the same type (three single-crown miniatures, three miniature trailers, three single-crown semiminiature, or three semiminiature trailers)

Section II – **Standard** specimen plants, **green** foliage, any type blossom

- 5 White, cream, blush, yellow, and two-tones of these colors
- 6 Pink, coral, rose, and two-tones of these colors
- 7 Red, wine, fuchsia, plum, maroon, burgundy, mauve and two-tones of these colors
- 8 Blue, purple, lavender, orchid, and two-tones of these colors
- 9 Fantasy and Chimera
- 10 Edged
- 11 Multi-colored

Section III – **Standard** specimen plants, **variegated** foliage, any type blossom

- 12 White, cream, blush, green, yellow, and two-tones of these colors
- 13 Pink, coral, rose and two-tones of these colors
- 14 Red, wine, fuchsia, plum, maroon, burgundy, mauve and two-tones of these colors
- 15 Blue, purple, lavender, orchid and two-tones of these colors
- 16 Fantasy and Chimera
- 17 Edged
- 18 Multi-colored

Section IV – **Miniature** specimen plants, **any type foliage**, any type blossom

- 19 White, cream, blush, yellow, green and two-tones of these colors
- 20 Pink, coral, rose and two-tones of these colors
- 21 Red, wine, fuchsia, plum, maroon, burgundy, mauve and two-tones of these colors
- 22 Blue, purple, lavender, orchid and two-tones of these colors
- 23 Fantasy and Chimera
- 24 Edged
- 25 Multi-colored

Section V – Semiminiature specimen plants, any type foliage, any type blossom

- 26 White, cream, blush, yellow, green and two-tones of these colors
- 27 Pink, coral, rose and two-tones of these colors
- 28 Red, wine, fuchsia, plum, maroon, burgundy, mauve and two-tones of these colors
- 29 Blue, purple, lavender, orchid and two-tones of these colors
- 30 Fantasy and Chimera
- 31 Edged
- 32 Multi-colored

Section VI – Trailers – any type foliage, any type blossom

- 33 Standard trailers
- 34 Semiminiature trailers
- 35 Miniature trailers

Section VII – Special Classes

- 36 Saintpaulia species and natural hybrids
- 37 New cultivar seedling origination (see Rule 16)
- 38 New cultivar sport and mutant origination (see Rule 16)
- 39 African violet plant in an unusual, novel or decorative container (see Rule 18)
- 40 Vintage violets (25 years and older)
- 41 Novice (see Rule 22)

Section VIII – Gesneriads other than African violets (see Rules 10 & 11)

- 42 Miniature Sinningia (may be displayed in a regular pot or growing in a clear container, cover permitted; no single plant more than 5" in diameter)
- 43 Tuberous-rooted (Sinningia, Nautilocalyx, Chrysothemis, etc.)
- 44 Scaly-rhizome in bloom
- 45 Fibrous-rooted in bloom (Streptocarpus / Streptocarpella)
- 46 Fibrous-rooted in bloom (long-stemmed such as Aeschynanthus, Columnea, Nematanthus, etc.)
- 47 Fibrous-rooted in bloom (all other blooming fibrous-rooted: Primulina, Episcia, Petrocosmea, Alsobia, etc.)
- 48 Gesneriads grown for ornamental foliage (Episcia)
- 49 Gesneriads grown for ornamental foliage (other than Episcia)



DESIGN DIVISION

SECTION IX –Interpretive Flower Arrangements

Designs using cut African violet blossoms. Fresh cut, dried, treated, painted, colored plant material and man-made materials are permitted. National flags (or facsimiles, artificial plant materials (including fruits and vegetables) and live creatures are not permitted. Draping and backdrops are permitted in niches unless restricted by the class. Accessories and bases are optional. Sides of niches may not be used by exhibitors.

50 “THE SPACE RACE” — In 1957, the Soviet Union successfully launched Sputnik 1, the very first artificial satellite to orbit the earth. They also launched Sputnik 2 later in the year, a satellite that carried the first animal into space, which started the space race and man's exploration of our solar system. In 1959, America's first astronauts – John Glenn and Alan Shepard – were introduced by NASA. A hanging design in a white cardboard niche 28”H x 24”W x 12”D deep (15” may be used for depth of niche). Limit 4.

51 “HULA HOOP” — The popular children's toy, the Hula-Hoop, was created in the '50s by Wham-O. Being one of the biggest fads of that decade, the Hula-Hoop has gracefully withstood the test of time. A flower arrangement in a white foam board niche 14”H x 11”W x 5 ½”D (10” may be used for depth of niche). Limit 4.

52 “THE MICKEY MOUSE CLUB” — The popular children's television show "The Mickey Mouse Club" premiered in 1954. Each day of the week had a special show theme. The cast members who performed a variety of musical and dance numbers were called “Mousketeers” and wore Mickey and Minnie Mouse Ears. A flower arrangement in a white cardboard niche 14”H x 11”W x 5 ½”D (10” may be used for the depth of the niche). Limit 4.

53 “DIAMONDS ARE A GIRL’S BEST FRIEND” — Although introduced by Carol Channing in the 1949 Broadway production of “Gentlemen Prefer Blondes,” the song was most famously sung by Marilyn Monroe in the 1953 film version. An underwater arrangement not to exceed 20” in any dimension. Limit 4.

54 “RODGERS AND HAMMERSTEIN MUSICALS” — Musicals were an important and popular component to the American theater scene in the 1950s. During the 1950s, several Rodgers and Hammerstein musical shows were popular on Broadway in Manhattan, notably *Carousel*, *Oklahoma!*, *South Pacific*, *The King and I*, *Flower Drum Song*, and *The Sound of Music*. Staged in a white foam board niche 10”H x 8”W x 4”D (6” may be used for depth of design). Limit 4 entries.

SECTION X– Interpretive Plant Arrangements

Designs using one or more blooming African violet plants, removed from their pots, with the root ball encased in plastic or some other material. Fresh cut, dried, treated, painted, colored plant materials and man-made materials are permitted. National flags (or facsimiles), artificial plant material (including fruits and vegetables), and live creatures are not permitted. Accessories,

bases, draping, and backdrops are optional, unless restricted by a specific class. Sides of niches may not be used by exhibitors.

55 “THE LONE RANGER” — The Lone Ranger was actually a fictional masked former Texas Ranger who fought outlaws in the American Old West with his Native American friend, Tonto. He first appeared in 1933 in a radio show series which proved to be a hit and spawned a series of books as well as an equally popular television show which ran from 1949 to 1957, comic books and several movies. A plant arrangement in a white foam board niche 28”H x 24”W x 12”D (15” may be used for depth of niche). Limit 4.

56 “DAVY CROCKETT, KING OF THE WILD FRONTIER” — A fad of the ‘50s, the coonskin cap was made famous by Fess Parker who wore one while playing the role of David Crockett in the 1954 Disney miniseries. The Disney show spurred about \$100,000,000 in sales of the coonskin cap. A free-standing plant arrangement placed on a 15” flat matte black foam board square. Arrangement may not exceed 25” in height and will be viewed from the front only. Limit 4.

57 “SOCK HOPS” — High school dances of the ‘50s were typically informal, school-chaperoned events. The teens would remove their shoes and dance in their socks to protect the gymnasium floor. Combined with rock 'n' roll, the liberating feeling of removing shoes while dancing inspired teens to shake, jitterbug, rattle and roll, giving way to a whole new style of dancing. The famous TV dance show "American Bandstand" featured brisk teenaged dancers showing off their moves. A plant arrangement in a white cardboard niche 28”H x 24”W x 12”D (15” may be used for the depth of the niche). Limit 4.

58 “CLASSIC FILMS OF THE ‘50s” — Established stars appeared in films that have come to be regarded as classics such as *Sunset Boulevard* (Gloria Swanson and William Holden), *High Noon* (Gary Cooper and Grace Kelly), *North by Northwest* (Cary Grant), *The Man in the Gray Flannel Suit* (Gregory Peck), *The Bridge on the River Kwai* (Alec Guinness), *Singin' in the Rain* (Gene Kelly and Donald O'Connor), *White Christmas* (Bing Crosby), and *Ben-Hur* (Charlton Heston). A plant arrangement in a white cardboard niche 14”H x 11”W x 5 ½”D (10” may be used for depth of niche). Limit 4.

SECTION XI – Container Gardens

Miniature scenes with one or more blooming African violet plants and other growing materials. Accessories are permitted. Cut plant material, national flags (or facsimiles), and live creatures are not permitted. Gardens may not exceed 30” in any direction. To be flat (with no underlayment) on table surface and will be judged from the front only. The classes are untitled, so as not to discourage the entry of established gardens. Unlimited entries, but design reservations must be made.

59 Natural Garden.

60 Dish Garden.

61 Terrarium (mirrored sides permitted; must be covered).

AFRICAN VIOLET COUNCIL OF FLORIDA – 2018 CALENDAR OF EVENTS

October 4 – October 6 (Thursday- Saturday)

HILTON GARDEN INN

3839 Don Emerson Drive, Lakeland, Florida

Reservations: Ask for special rate for AVCF show

Or to book online, follow the links on

www.africanvioletcouncilofflorida.club



Room Allocation

Showroom – Lodwick Room

Salesroom – Elder Room

Exhibitors' plant assembly/grooming area – foyer of Elder & Lodwick rooms

Entries/Classification – foyer of Elder & Lodwick rooms

Awards Banquet – outside showroom

Thursday, October 4, 2018

7:00 a.m. – 11p.m. – Show/Sales/Entries set-up (Elder & Lodwick)

11:00 – 1:00 p.m. – Entries/Classification for Convention Workers (foyer of Elder & Lodwick)

1:00 – 9:00 p.m. – Exhibitors' plant assembly/grooming (foyer of Elder & Lodwick)

3:00 – 9:00 p.m. – Entries/Classification/Plant Placement (foyer outside Elder & Lodwick)

3:00 – 9:00 p.m. – Designers begin work after entries process (Lodwick)

Friday October 5, 2018

7:00 – 8:45 a.m. – Designers make finishing touches to their designs (Lodwick)

8:30 – 9:00 a.m. – Judges and Clerks instructions (niche near bar)

9:00 – Noon – Judging (Lodwick)

10:00 – 6:00 p.m. – Salesroom open (Elder)

Noon – 6:00 p.m. – Showroom open to Public (Lodwick)

4:00 – 6:00 p.m. – AVCF Board Meeting (niche near bar)

Noon – 5:00 p.m. – Silent Auction (foyer of Lodwick)

3:00 – 4:00 p.m. - Social Media Presentation by Patrick Greenstreet (meeting room)

6:00 – 7:00 p.m. – Social hour, cash bar (outside Lodwick & Bar)

7:00 – 9:30 p.m. – Awards banquet and Silent Auction/Raffle drawing (outside Lodwick)

9:30 – 11:00 p.m. – Showroom open to AVCF members

Saturday, October 6, 2018

9:00 – 10:00 a.m. – AVCF Annual Meeting – (niche near bar)

10:00 – 3:00 p.m. – Show & Sales open (Elder & Lodwick)

2:00 – 3:00 p.m. – Sold show plants picked up (Lodwick)

3:00 p.m. - Show & Sales Breakdown