

Welcome

Bel Grand ~ Ashmore Farms The Meadow

Neighborhoods!



March 6, 2025

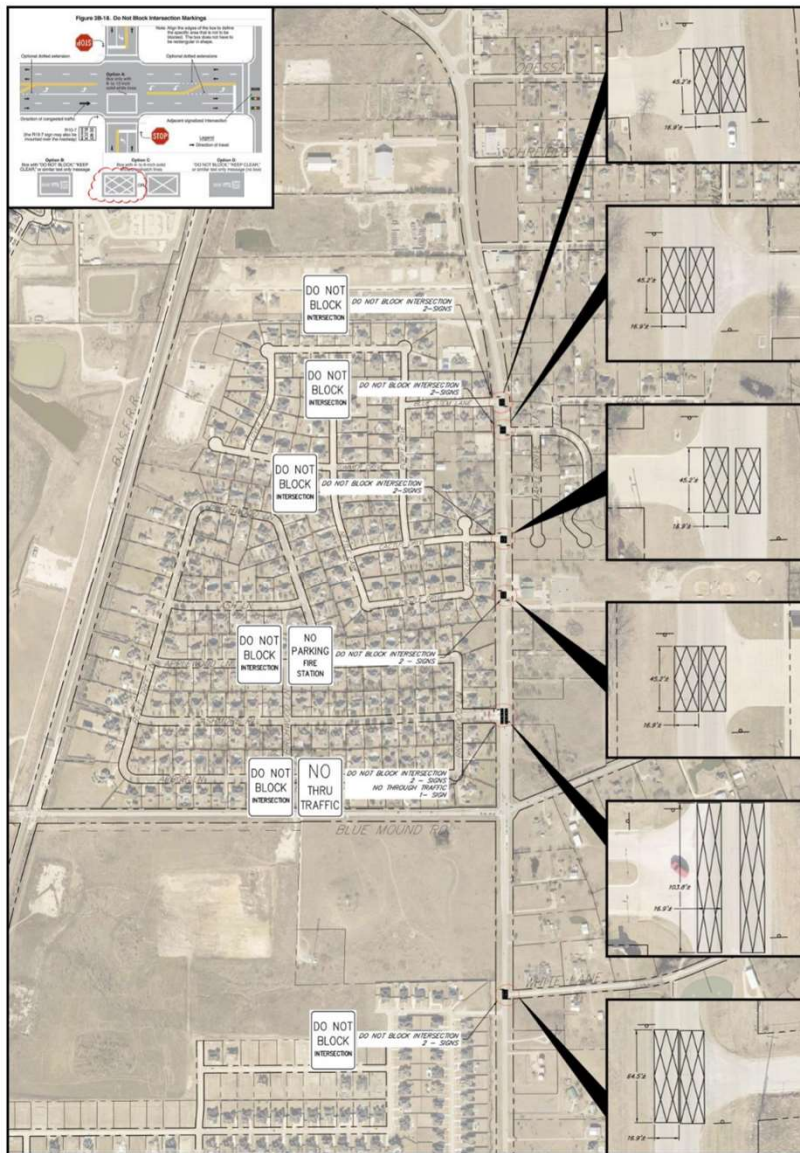
This Evening is a Review of

- FM 156 Traffic Mitigation Ph II
 - Northglen - Phase III
 - City Residential Growth
 - Infrastructure Activities
 - FY 2024-2025 Budget

And

Questions & Answer

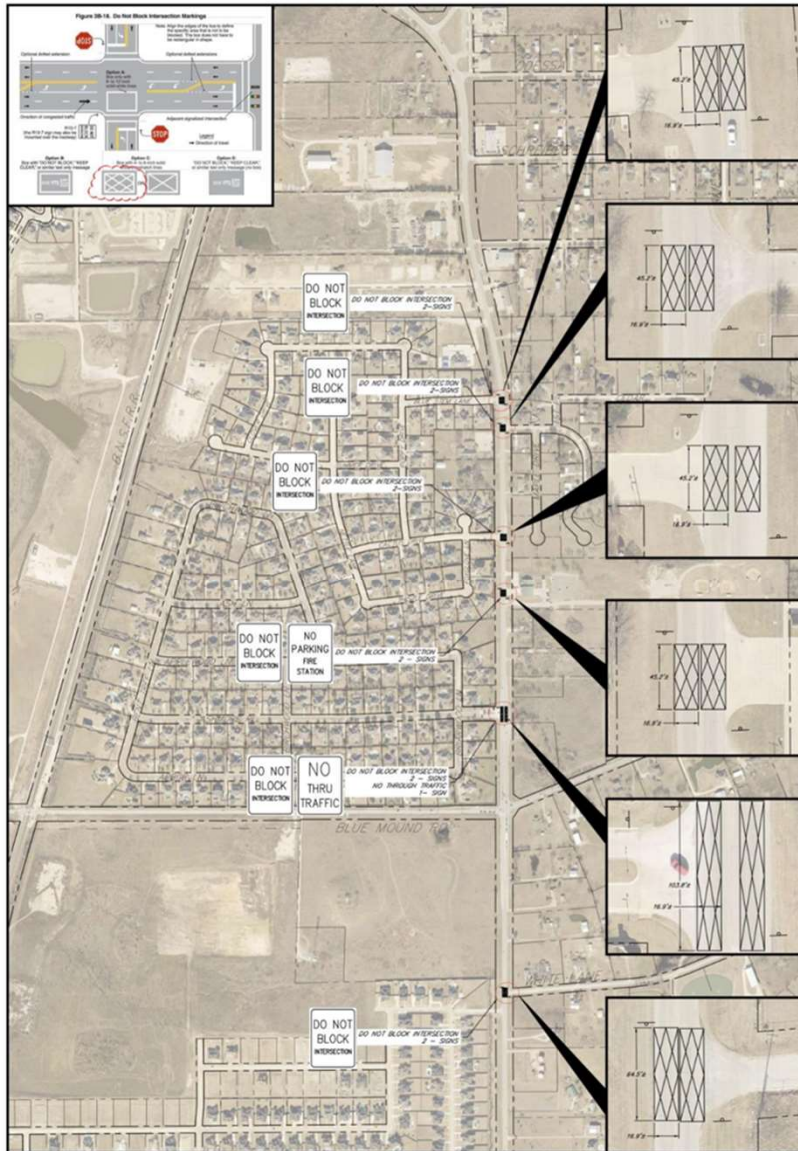




FM 156 Traffic Mitigation Ph II

DO NOT
BLOCK
INTERSECTION

- Roadway Markings on FM 156
- Signs Posted at Intersections



FM 156 Traffic Mitigation Ph II

Planned Schedule

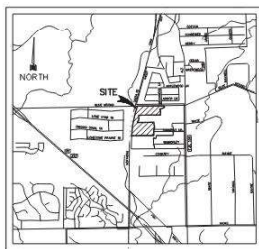
- *Start – March 26, 2025*
- *Finish – April 3, 2025*
- *April 7 – 11 Weather Days*

CONSTRUCTION PLANS

NorthGlen PHASE THREE

OCTOBER 2023
CITY OF HASLET
TARRANT COUNTY, TEXAS

NOTE:
ALL CONSTRUCTION STANDARDS AND DETAILS
TO COMPLY WITH THE CITY OF HASLET AND
NCTCOG SPECIFICATIONS.



LOCATION MAP
NOT TO SCALE

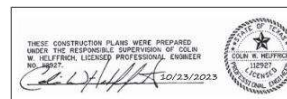
ALL CONSTRUCTION SHALL BE IN ACCORDANCE WITH
THE GEOTECH REPORT NO. WY0042-G BY ALPHA
TESTING DATED SEPTEMBER 12, 2016.

OWNER

GA HASLET DEVELOPMENT, INC.
8750 N. CENTRAL EXPRESSWAY, SUITE 1735
DALLAS, TEXAS 75231
CONTACT: RANDY McCUISTION, P.E.

ENGINEER

PAPE-DAWSON ENGINEERS
TEXAS ENGINEERING FIRM #470
TEXAS SURVEYING FIRM #10194390
6105 TENNYSON PKWY, SUITE 210
214-420-8494 PLANO, TEXAS 75027
CONTACT: COLIN W. HELFFRICH, P.E.

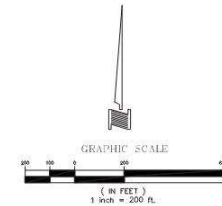


SHEET INDEX

PLATE NO. DESCRIPTION

-	COVER SHEET
1	FINAL PLAT
2	FINAL PLAT
3	FINAL PLAT
4	PAVING P&P - BROADMOOR DR & OXFORD ST
5	PAVING P&P - OAKMONT DR - STA. 0+00 - 7+50
6	PAVING P&P - OAKMONT DR - STA. 7+50 - END
7	PAVING P&P - TOWNSEND DR
8	PAVING P&P - ARBY DR
9	PAVING P&P - DEVONSHIRE DR - STA. 0+00 - 7+50
10	PAVING P&P - DEVONSHIRE DR - STA. 7+50 - END
11	PAVING P&P - GLENEAGLES ST
12A	EXISTING DRAINAGE AREA MAP
12B	DRAINAGE AREA MAP
13	INLET CAPACITY & STORM HYDRAULICS CHARTS
14	STORM P&P - STM-01 - STA. 0+00 - 6+00
15	STORM P&P - STM-01 - STA. 6+00 - END
16	STORM P&P - STM-02 - STA. 0+00 - 6+00 & STM-03
17	STORM P&P - STM-02 - STA. 6+00 - 12+00
18	STORM P&P - STM-02 - STA. 12+00 - END
19	STORM P&P - STM-04 - STA. 0+00 - 9+50
20	STORM P&P - STM-04 - STA. 9+50 - END & STM-05
21	OVERALL WATER PLAN
22	OVERALL SANITARY SEWER PLAN
23	WATER & SANITARY SEWER PLAN
24	WATER & SANITARY SEWER PLAN
25	WATER LINE PROFILES - WAT-03
26	WATER LINE PROFILES - WAT-04
27	SANITARY SEWER PROFILES - SAN-01
28	SANITARY SEWER PROFILES - SAN-02 - STA. 0+00 - 7+50
29	SANITARY SEWER PROFILES - SAN-02 - STA. 7+50 - END
30	SANITARY SEWER PROFILES - SAN-03 - STA. 0+00 - 6+50
31	SANITARY SEWER PROFILES - SAN-03 - STA. 6+50 - END
32	SANITARY SEWER PROFILES - SAN-04 - STA. 0+00 - 7+00
33	SANITARY SEWER PROFILES - SAN-04 - STA. 7+00 - END
34	GRADING PLAN
35	GRADING PLAN
36	GRADING PLAN
37	POND PLAN
38	EROSION CONTROL PLAN
39	EROSION CONTROL PLAN
40	STREET LIGHT & SIGNAGE PLAN
41	STREET LIGHT & SIGNAGE PLAN
42	SIDEWALK PLAN
(1)	CITY OF HASLET DETAILS
(2)	TxDOT DETAILS





Northglen Subdivision
192.820 acres

Northglen Phase III

*** 58.955 acres**

*** 83 single-family lots**

*** 3 open space (HOA) lots**

PROJECT LAYOUT
NorthGlen
192.820 ACRES

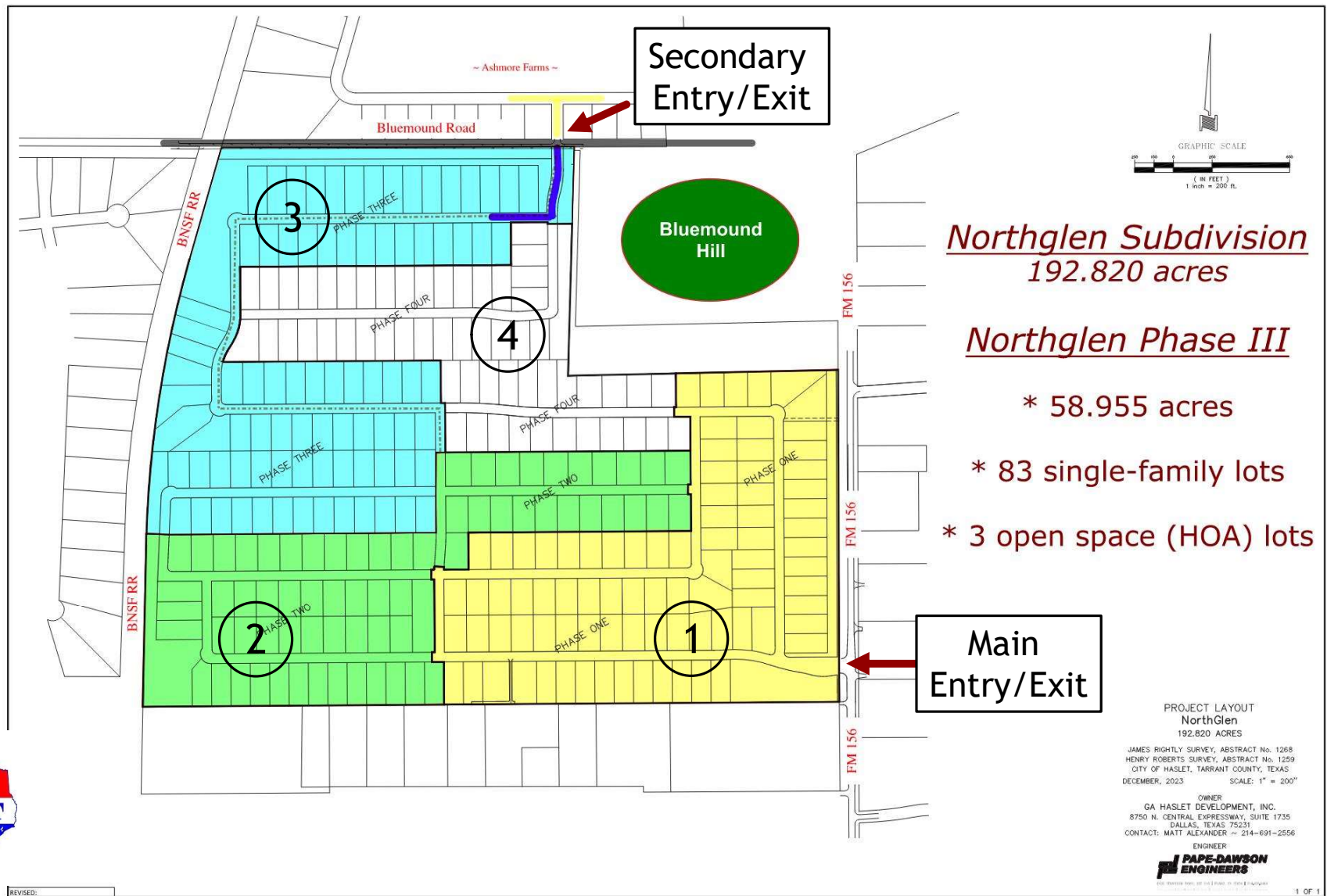
JAMES RIGHTLY SURVEY, ABSTRACT No. 1268
HENRY ROBERTS SURVEY, ABSTRACT No. 1259
CITY OF HASLET, TARRANT COUNTY, TEXAS
DECEMBER, 2023 SCALE: 1" = 200'

OWNER
GA HASLET DEVELOPMENT, INC.
8750 N. CENTRAL EXPRESSWAY, SUITE 1735
DALLAS, TEXAS 75231
CONTACT: MATT ALEXANDER ~ 214-691-2556

ENGINEER
PAPE-DAWSON
ENGINEERS
P.O. BOX 10000, SUITE 1000, FORT WORTH, TEXAS 76101

REVISED:

1 OF 1

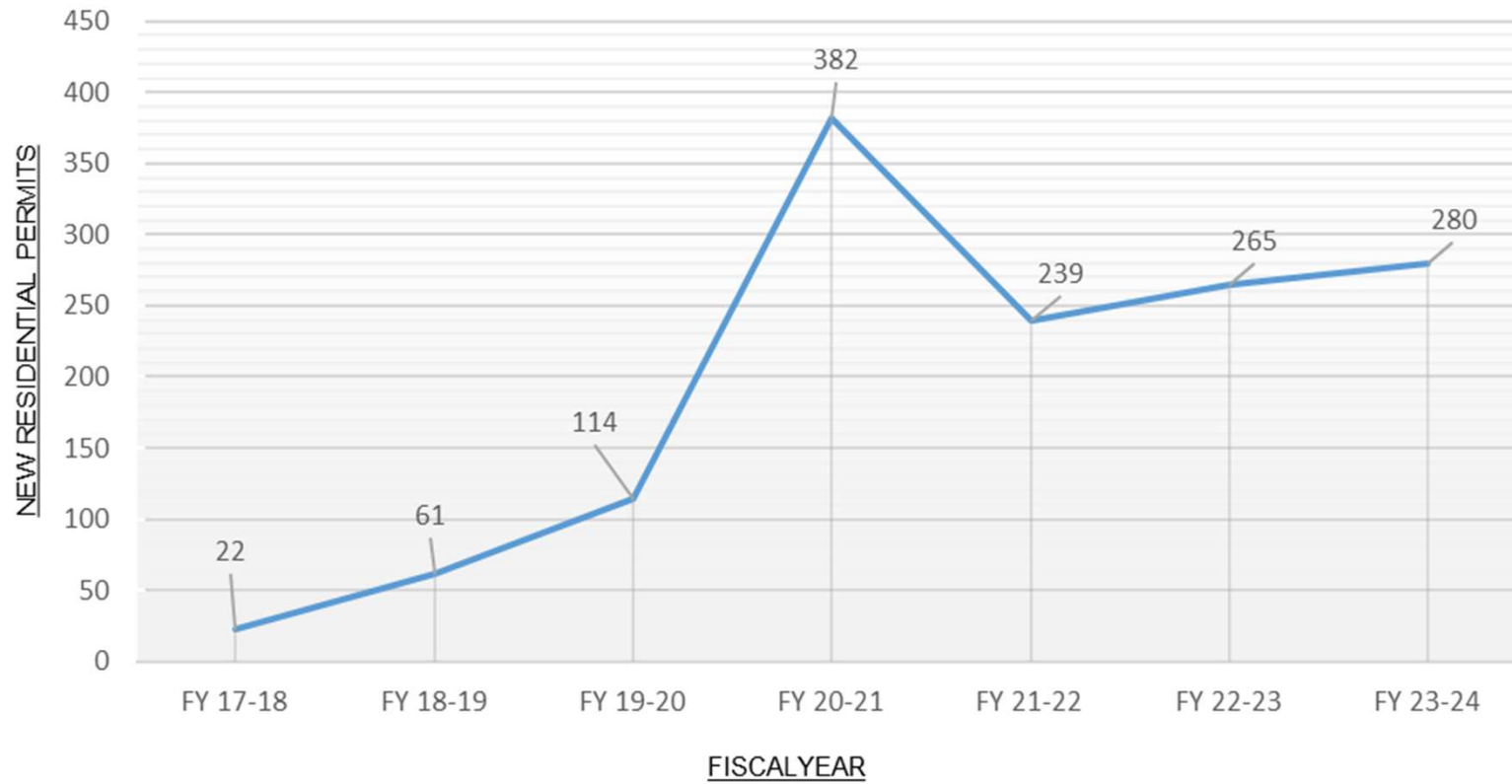


City of Haslet

Residential Growth Continues

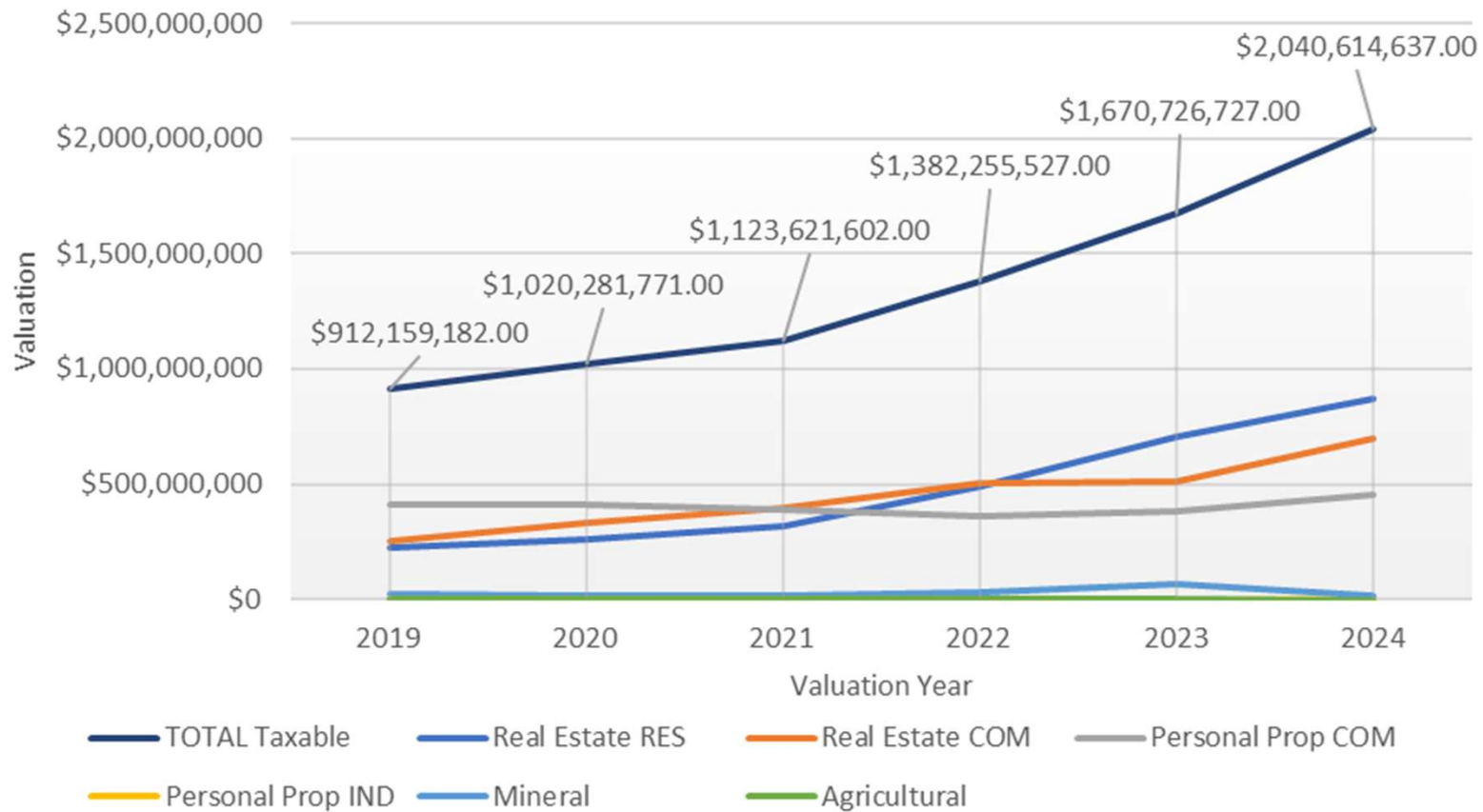


NEW RESIDENTIAL PERMITS ISSUED / FISCAL YEAR



1,363 new single-family residential housing permits have been issued since 2017.

TAD Appraisal Roll Valuation City Of Haslet



City of Haslet's 2024 taxable valuation have risen 124% since 2019.

City of Haslet

Infrastructure Activity

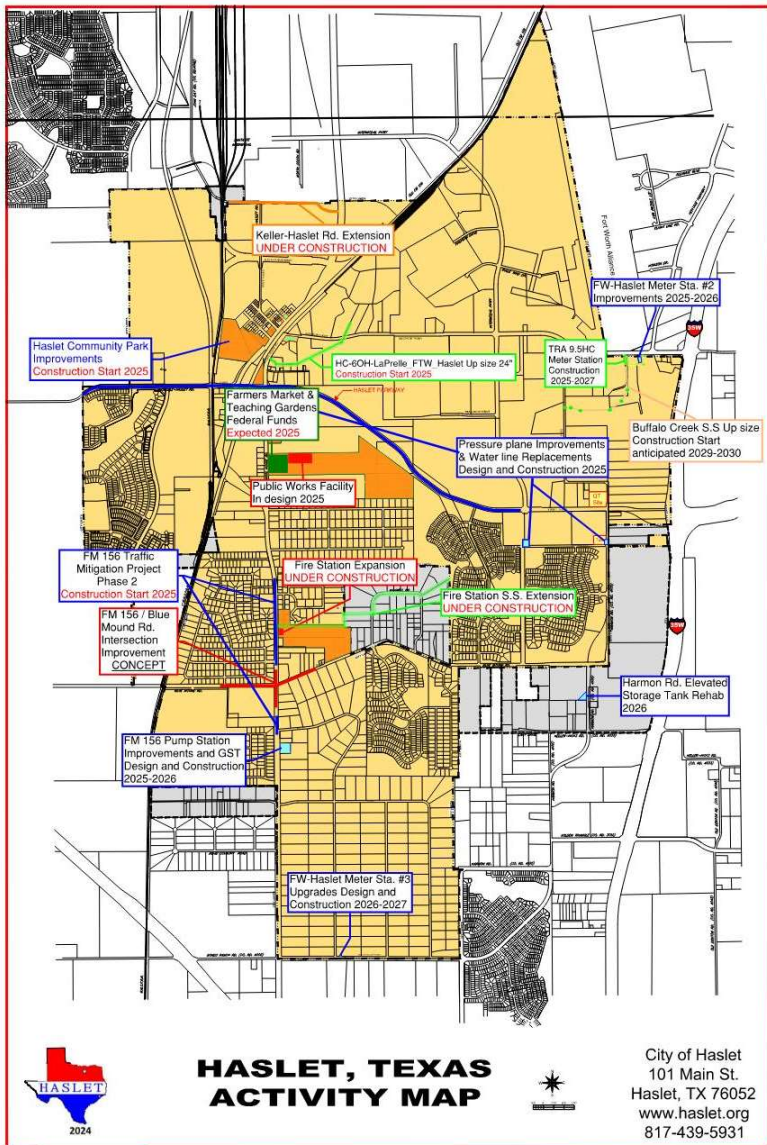


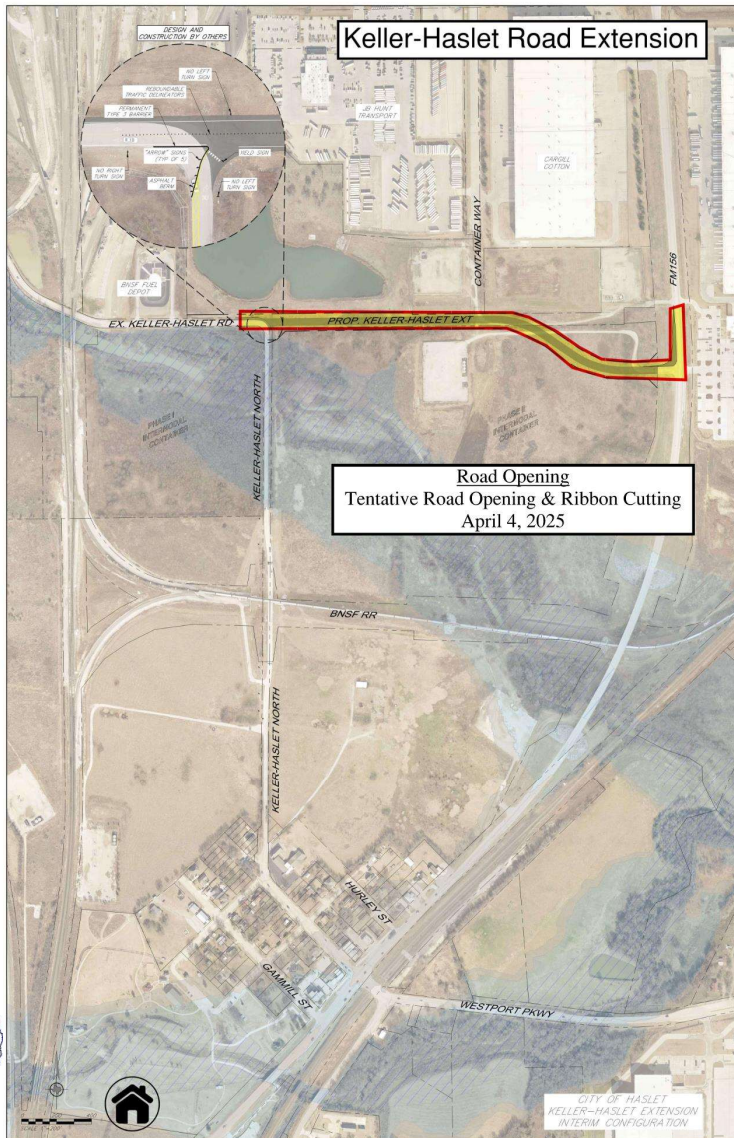
City of Haslet

Current Infrastructure Activity

15 Projects

- Roads
- Water
- Sewer
- Facilities





City of Haslet

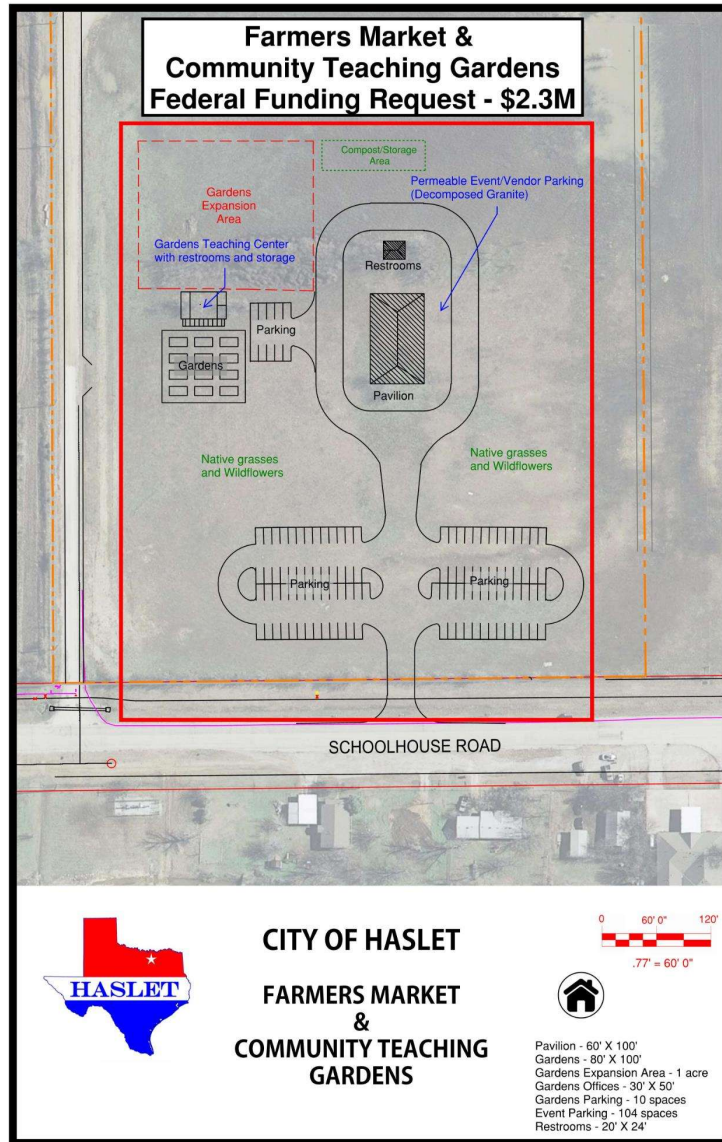
Keller-Haslet Road Extension Project

Road Opening & Ribbon Cutting
April 4, 2025

This project extends Keller-Haslet Road to FM 156 providing Sendera Ranch & BNSF commuters a direct route to FM 156. This project is expected to decrease the congestion of Westport Pkwy at FM 156.

To Be Proposed Blue Mound Road East & West Improvements





City of Haslet

Farmers Market & Community Teaching Gardens

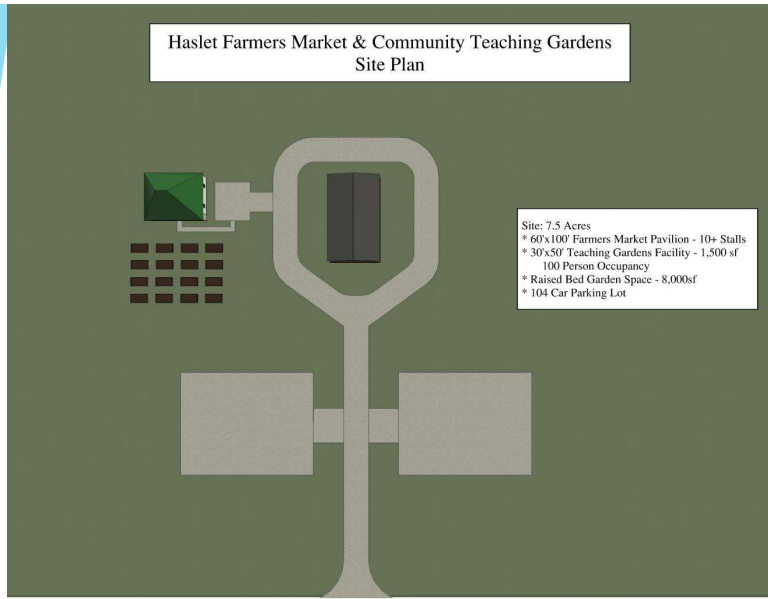
The Mayor submitted a Congressional Appropriations Request to former Congresswoman Kay Granger. Congresswoman Granger forwarded the request to the Congressional Appropriations Committee, the committee approved and advanced the request to Congress. The City's request is awaiting the Congressional Floor Vote on Appropriations.

Thank you, Congresswoman Granger!

City of Haslet

Farmers Market & Community Teaching Gardens

Renderings



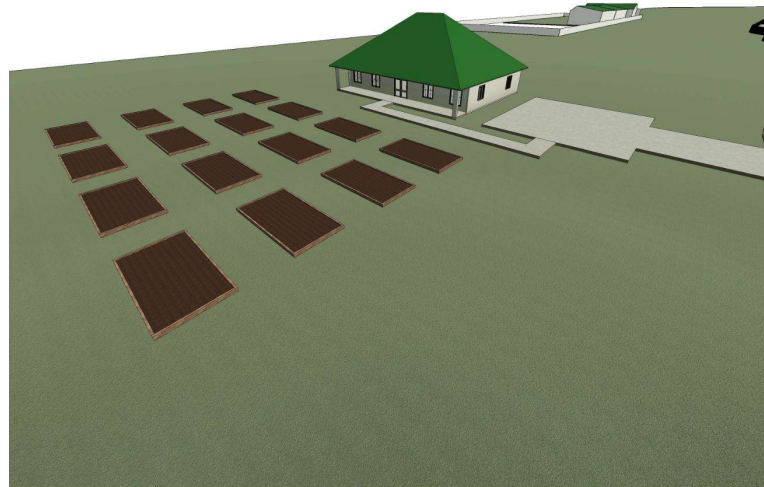
Haslet Farmers Market & Community Teaching Gardens
South View



Haslet Farmers Market & Community Teaching Gardens
Pavilion South East View



Haslet Farmers Market & Community Teaching Gardens
Teaching Gardens & Teaching Facility



City of Haslet

Farmers Market & Community Teaching Gardens

Renderings





Haslet Farmers Market & Community Teaching Gardens
View from Teaching Facility Porch

City of Haslet

FY 2024-2025 Budget Overview



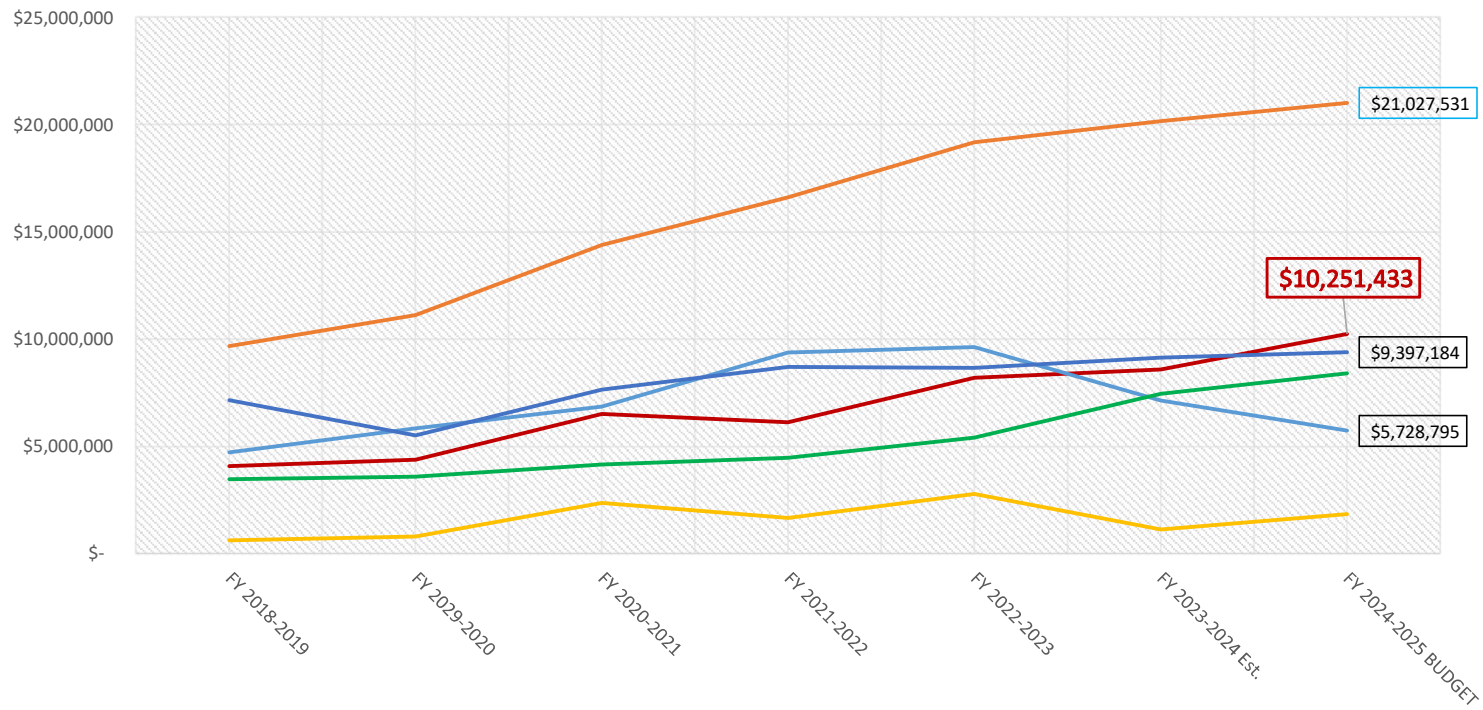
FY 2024-2025 Budget

General Fund Budget = \$10.25 Million

- Reflects our consistent growth in population and development,
- Provides competitive wages and salaries to attract and retain skilled employees,
- Emphasizes the importance of public safety,
- Continues infrastructure investment and maintenance, and
- Reflects Cash Funding of Capital Projects with an increased focus on:
 - Street maintenance, repair, and construction,
 - Additional funding for park improvements and maintenance
 - Information technology.



General Fund Budget Review Revenue & Expenses



— Budget
(Budget = Operating
Expenditures + Transfers Out)

— Operating Revenues

— Total Available Resources

— Operating Expenditures

— Reserves

— Operating Transfers Out

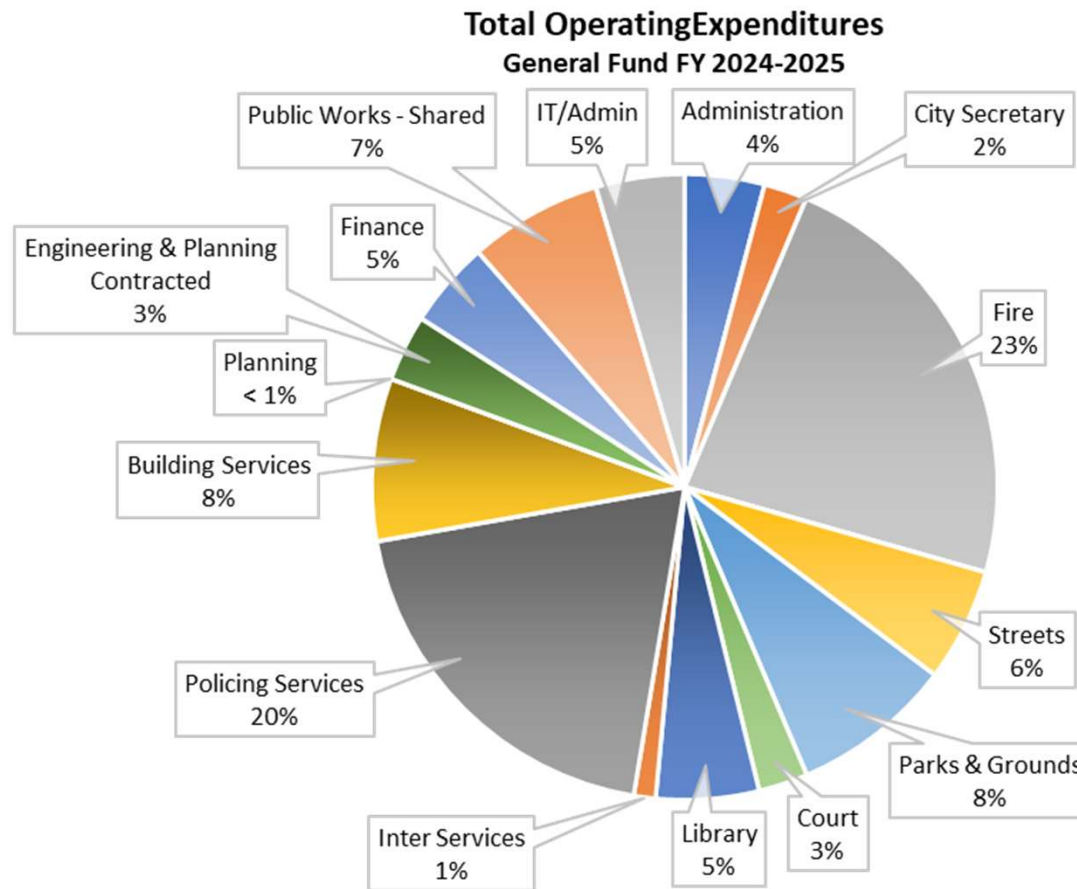




■ Administration
■ Streets
■ Library
■ Building Services
■ Finance

■ City Secretary
■ Parks & Grounds
■ Inter Services
■ Planning
■ Public Works - Shared

■ Fire
■ Court
■ Policing Services
■ Engineering & Planning Contracted
■ IT/Admin

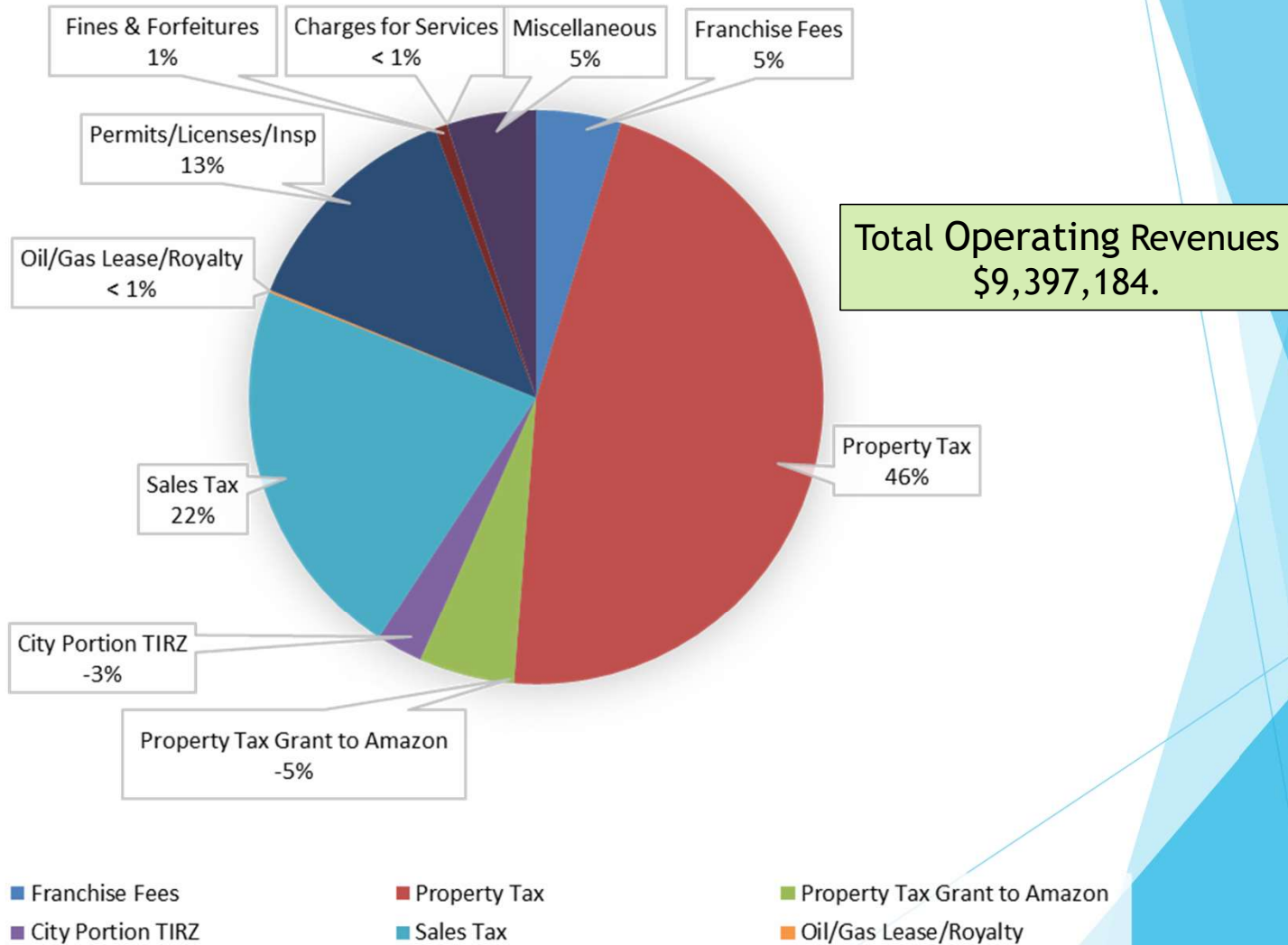


**Operating Expenditures
\$8,412,172**

**Operating Expenditures
Transfers Out
\$1,839,261**

**GEN. FUND BUDGET
\$10,251,433**

Total Operating Revenue Sources General Fund FY 2024-2025

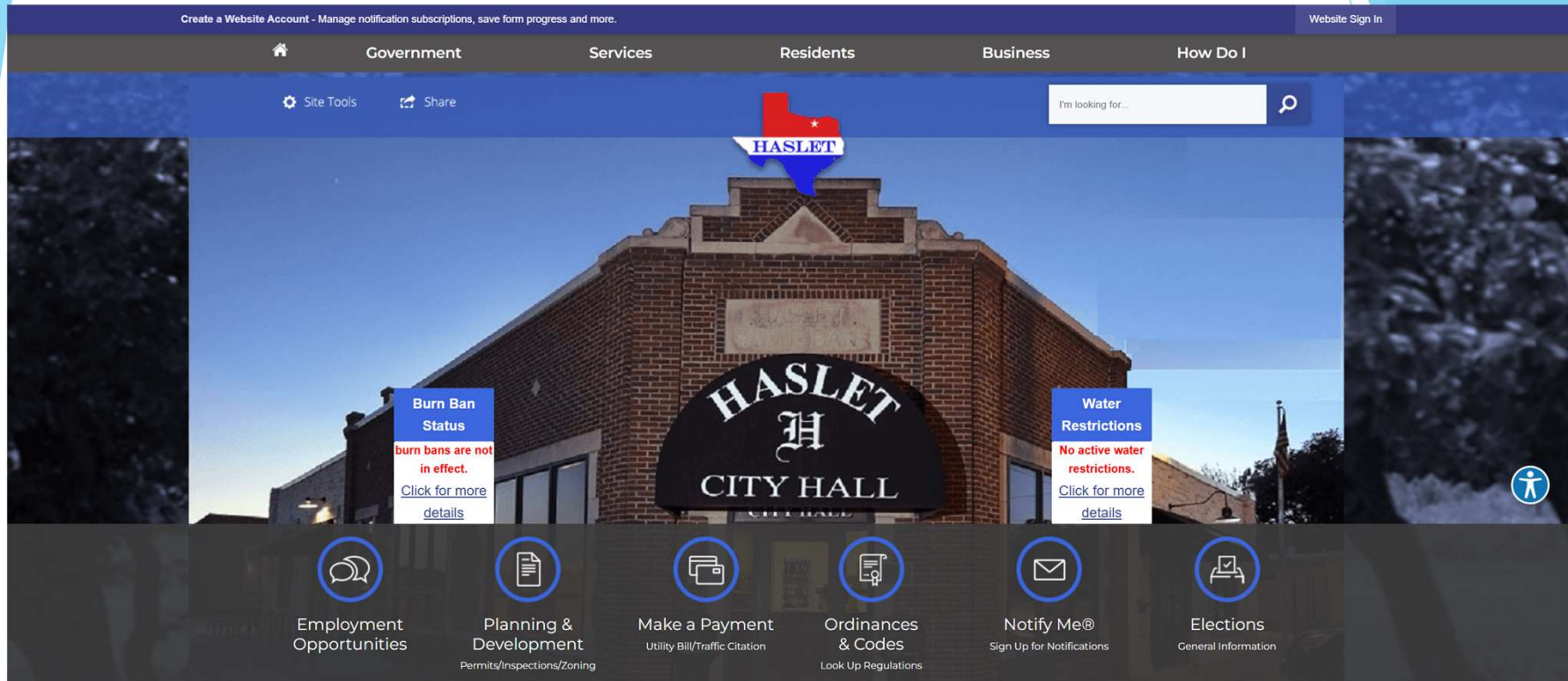


Sign Up for Notify Me[®]



Scan the QR code,
visit Haslet.org/list.aspx,
or click the Notify Me button on the
Haslet.org home page to sign up for email
or text notifications from the City of Haslet

www.haslet.org



Notify Me



Questions & Answers



*Thank You,
and good evening*

**Bel Grand ~ Ashmore Farms
& The Meadow**

Neighborhoods!

