



ಸಂಚಾರ ಸುದ್ದಿ

Sanchara Suddi

**BRINGING TO YOU THE LATEST ROAD TRAFFIC NEWS FROM OUR
VERY OWN BENGALURU AND ACROSS THE WORLD**

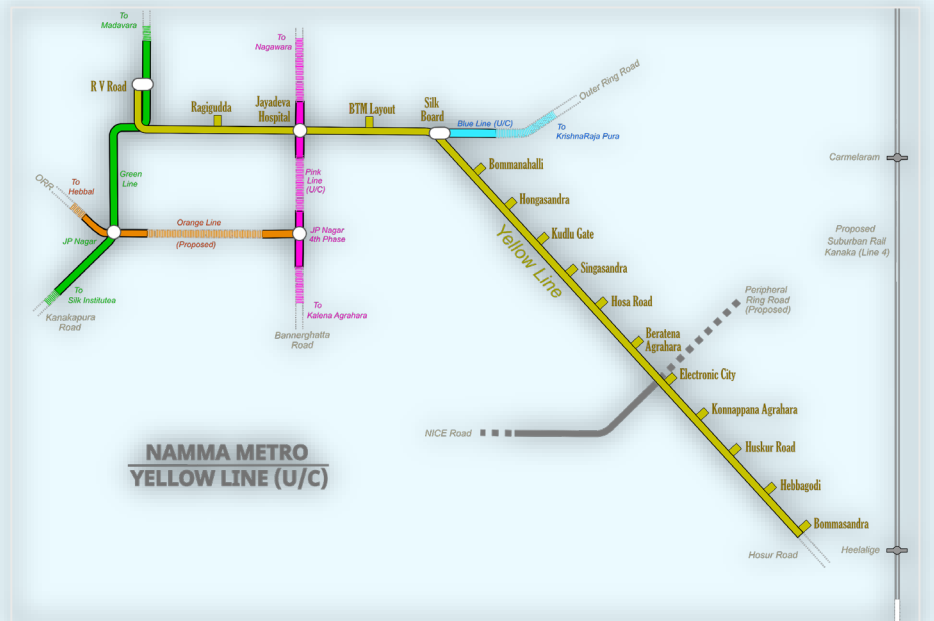
Fortnightly Newsletter published by SLS Transport Training Institute and Consultancy Pvt Ltd

Yellow Line of Namma Metro - Coming Soon!

The 18.82 km Yellow Line of Namma Metro is under construction which connects R.V. Road with Bommasandra.

It is fully elevated with 16 stations, R.V. Road station is the terminal station on the city side where an interchange is being provided with the Green Line. Jayadeva Hospital station will serve as another elevated interchange station with the Pink Line that is also under construction in Phase II of Namma Metro's expansion.

Upon its opening, Jayadeva Station will be the tallest and largest metro station in Bengaluru, with 5 levels of transport, including the metro lines. Central Silk Board station will be another interchange station between the Yellow Line and Blue Line. The other end of the Yellow Line will terminate at Bommasandra.

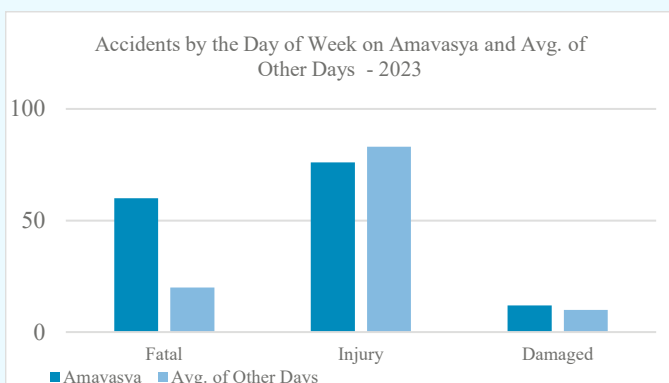


Amavasya and Road Accidents: A Statistical Analysis of Accident Trends

Cultural beliefs and superstitions often shape our perceptions of various events, including road safety. One such belief is that unfortunate events tend to happen on Amavasya, and road accidents are among these occurrences. Despite the widespread acceptance of this notion, empirical evidence supporting a direct correlation between Amavasya and an increase in road accidents has been lacking. To investigate this claim, a comprehensive analysis was conducted to determine whether there is any potential link between Amavasya and the frequency of road accidents.

Accident data from 2022 and 2023 were meticulously collected, and the dates of Amavasya during this period were identified. The number of accidents on Amavasya was compared with the number of accidents on other days using statistical methods. This analysis aimed to determine if there is a significant difference in accident rates on Amavasya compared to other days.

Accidents by the Day of Week - 2023		
	Amavasya	Avg. of Other Days
Fatal	60	20
Injury	76	83
Damaged	12	10



This analysis suggests that there is a higher number of accidents on To Read More, Visit <https://tticblr.com/ttic-blog>

What's NEWS in Bengaluru?!

^ Study shows Bengaluru will expand 58% by 2025

Throughout Bengaluru's rapid growth in the past seven decades, the problem has stemmed from the constant expansion unaccompanied by systematic planning. Data shows that this could continue to pose a problem in the years to come. A study conducted jointly by scientists from the National Institute of Engineering and IIT-Kharagpur predicted that the city will grow 58% by 2025



^ Hebbal Flyover Expansion

The Bengaluru Traffic Police issued a warning about traffic disruptions due to the Hebbal flyover expansion, affecting commuters from K.R.Puram and Nagavara towards the city for four months. The expansion project involves adding two tracks, necessitating the dismantling of spans near the K.R.Puram loop. Alternative routes are advised, with special instructions for peak hours.

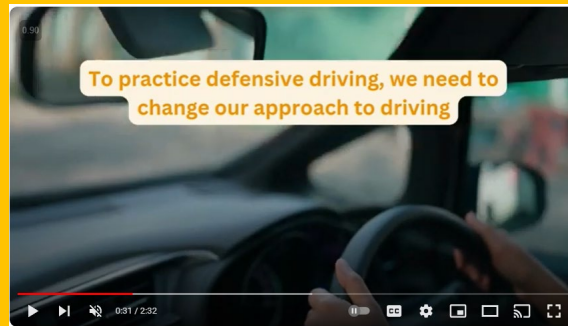


Source: <https://economictimes.indiatimes.com>



Defensive Driving

- ^ Defensive driving is a set of driving techniques that keep you safe
- ^ To practice defensive driving, we need to change our approach to driving
- ^ Usually, we use a reactive approach to driving, such as braking or steering, when another vehicle or pedestrian encroaches our lane
- ^ Defensive driving suggests a proactive approach: *Always remain alert to everything around you and plan for the worst possible outcomes*



To view the video on "Defensive Driving", please visit <https://youtu.be/iJJqL8ZbwI4?si=AOHoEdmcujLJ4>

Please do visit our webpages by clicking on the following icons!



www.tticblr.com
+91 9611199135

Disclaimer: The contents of this newsletter are prepared by officials of SLS TTIC Pvt. Ltd. and represent their personal views on the subject matter and are protected by copyright law

