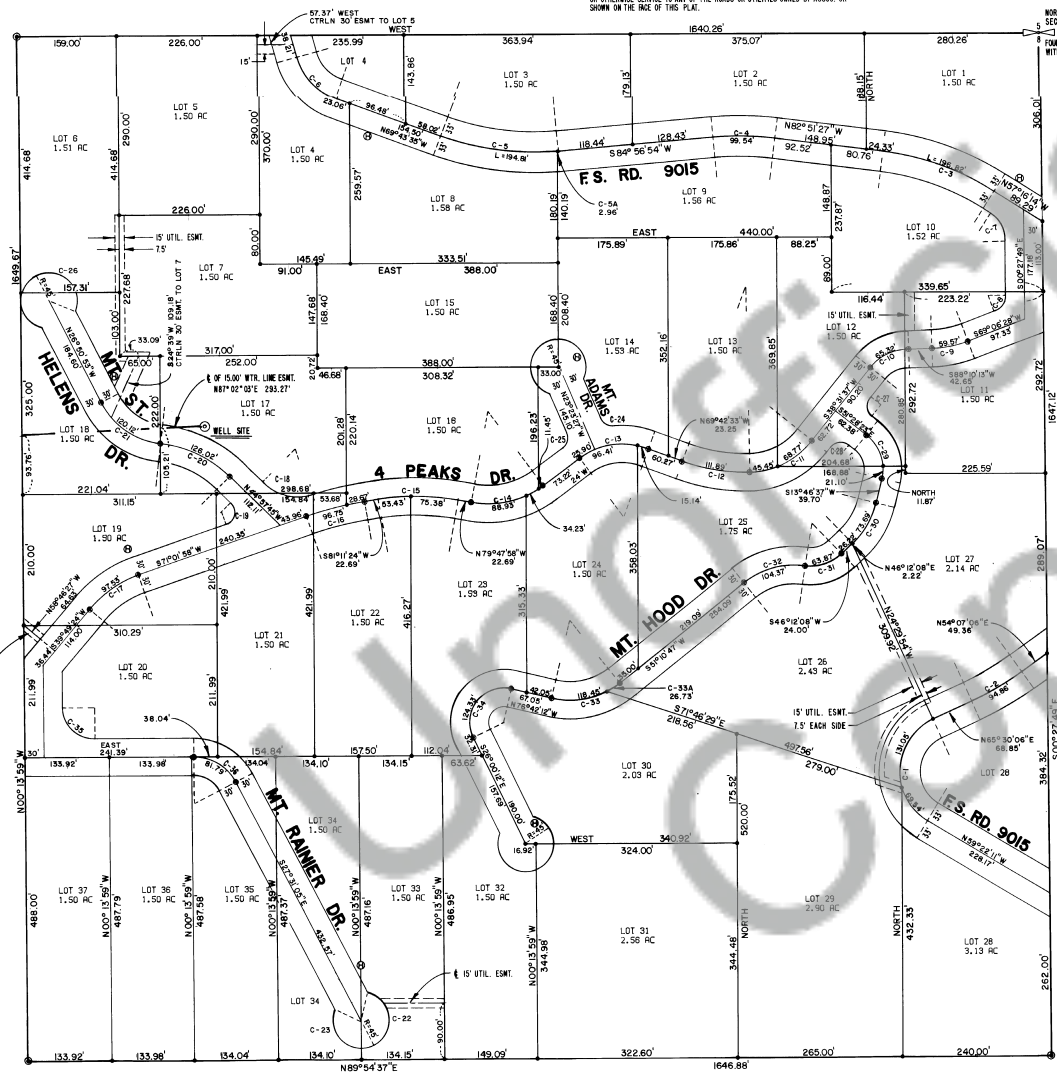


**NOTE:**  
ALL LOT LINE BEARINGS ARE NORTH/SOUTH OR EAST/WEST UNLESS SHOWN OTHERWISE ON THE FACE OF THIS PLAT.

**NOTE:**  
THE WATER SYSTEM AND PRIVATE ROADS ARE OWNED, IN THEIR ENTIRETY, BY THE "MT. ST. HELENS RELOCATION ASSOC." IT SHALL BE THE RESPONSIBILITY OF SAID ASSOC. ITS SUCCESSORS OR AGENTS, TO MAINTAIN AND IMPROVE THE ROADS AND UTILITIES HEREIN MENTIONED. SKAMANIA CO. SHALL BEAR NO RESPONSIBILITY IN BUILDING, IMPROVING, MAINTAINING OR OTHERWISE SERVING TO ANY OF THE ROADS OR UTILITIES OWNED BY ASSOC. OR SHOWN ON THE FACE OF THIS PLAT.

BY *Planning Dept.*  
MAY 10 10 53 AM '87  
*E. Maynard*



**WATER SYSTEM, SPECIAL CONDITIONS**  
The water system which serves this plat is designed for recreational/forest use only. If the use of the water system changes from a recreational tract use to use by a permanent population on a daily basis throughout the year, then the water storage provided would be insufficient and additional water storage will be required.  
The water storage area is located on an easement granted by the U.S. Forest Service, S. 20°20'30" W, a distance of 636.10 feet from the well site on lot 17.  
FIRE HYDRANT LOCATION WITH APPROXIMATE CAPACITY OF 50 GALLONS PER MINUTE AND 45 PSI.

**"4 Peaks Subdivision"**  
Skamania County, Wa.

**LEGAL DESCRIPTION**  
A portion of Section 8, Township 7 North, Range 8 East, Willamette Meridian more particularly described as the NE 1/4 of the NW 1/4, the 1/2 of the E 1/2 of the NW 1/4 of the NW 1/4, the NE 1/4 of the SE 1/4 of the SW 1/4 of the NW 1/4 and the N 1/2 of the N 1/2 of the NW 1/4 of the above mentioned Section 8, containing 82.5 acres.

**DEDICATION**  
KNOW ALL MEN BY THESE PRESENTS that we, the undersigned representatives for the MT. ST. HELENS RELOCATION ASSOCIATION, being the owners in fee simple of the land being hereby platted, hereby declare this a true plat of the 4 PEAKS SUBDIVISION, and embrace all of the above described property, and that the lots shown on said plat of the size and dimensions indicated thereon, and do hereby declare all of the roads shown hereon to be private and for the sole use of the above mentioned ASSOCIATION, except that easement shown and described as FOREST SERVICE ROAD NO. 9015, is hereby granted to the United States Forest Service. Lot No. 17 shall be dedicated to the ASSOCIATION, for purposes of drilling a water well and maintaining all appurtenances located thereon.  
IN WITNESS WHEREOF we have set our hands this 9<sup>th</sup> day of *February*, 1987.

*Russell B. Brass*  
*Charles H. Long* Sec. Treas.

*William J. Swanson*

Examined and approved this 4<sup>th</sup> day of *April*, 1987

*Carl A. Stone*  
SKAMANIA COUNTY ENGINEER

I hereby certify that the taxes on the land described herein have been paid to and including the year of 1987.  
*William J. Swanson*  
SKAMANIA COUNTY TREASURER  
*Charles H. Long*  
COMMISSIONER  
*William J. Swanson*  
COMMISSIONER

ATTEST:  
*Carl A. Stone*  
CLERK OF THE BOARD

ACKNOWLEDGEMENT  
STATE OF WASHINGTON  
COUNTY OF SKAMANIA, WASH.

THIS IS TO CERTIFY that on this 9<sup>th</sup> day of *February*, 1987 before me, the undersigned, a notary public, personally appeared the Officers of the Association, known to me to be the representatives for the MT. ST. HELENS RELOCATION ASSOC., who executed the foregoing dedication and acknowledged to me that they signed the same as a free and voluntary act. For said ASSOCIATION, and deed for the uses and purposes therein mentioned.  
WITNESS my hand and official seal the day and year last written.

*James J. Hale*  
NOTARY PUBLIC IN AND FOR THE STATE OF WASHINGTON  
RESIDING AT *Belleme, Washington*



**SURVEYORS CERTIFICATE**  
I, Russell B. Brass, do hereby certify that the above described plat of 4 Peaks Subdivision is based upon an actual survey and subdivision of Sec. 8, T7N, R8E, W1E, and that the distances, courses, angles and descriptions are shown thereon correctly, and that proper monument have been set and lot corners staked correctly on the ground.

*Russell B. Brass*  
RUSSELL B. BRASS, NO. 9130  
DATE *Feb 9, 1987*

**AUDITORS CERTIFICATE**  
Filed for record at the request of Mt. St. Helens Relocation Assoc. this 18<sup>th</sup> day of *May*, 1987 at 10:51 AM/PM and recorded

In Volume *B* of plats, on page *60-61*, records of Skamania County  
*Harry M. O'Brien*  
COUNTY AUDITOR  
*E. Maynard*  
COUNTY AUDITOR

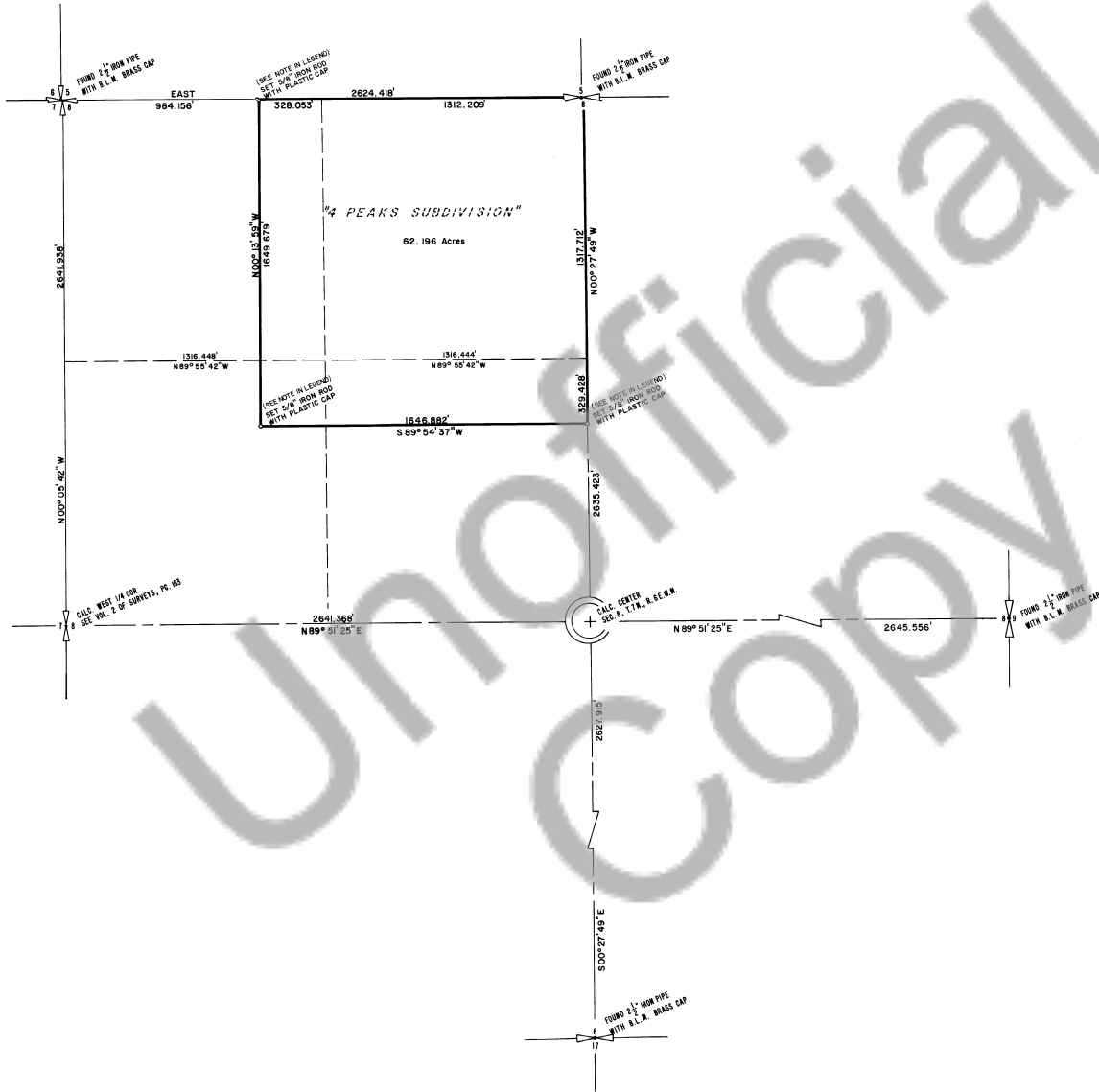
Scale: 1" = 100'  
Basis of Bearing: Survey by Brass, filed in Vol. 2 of surveys on Plat 163, records of Skamania Co., Wa.  
● Represents 5/8" Iron rod set with cap marked L.S. 9130  
○ Represents 2" x 4" iron pipe set and filled with concrete

CURVE No. 1 A = 124.52177' R = 32.04' L = 200.39' T = 178.52'	CURVE No. 2 A = 117.22000' R = 442.74' L = 94.80' T = 100.08'	CURVE No. 3 A = 25.92113' R = 442.45' L = 94.80' T = 100.08'	CURVE No. 4 A = 121.11393' R = 402.724' L = 99.54' T = 49.59'	CURVE No. 5 A = 25.91931' R = 440.74' L = 194.81' T = 97.52'	CURVE No. 6 A = 54.10199' R = 97.944' L = 92.62' T = 50.10'	CURVE No. 7 A = 57.48225' R = 175.05' L = 50.98' T = 27.04'	CURVE No. 8 A = 69.34171' R = 193.05' L = 50.98' T = 13.97'	CURVE No. 9 A = 19.03445' R = 175.05' L = 50.98' T = 13.97'	CURVE No. 10 A = 49.58386' R = 75.381' L = 111.52' T = 34.87'	CURVE No. 11 A = 50.15123' R = 130.22' L = 114.92' T = 81.08'	CURVE No. 12 A = 19.03445' R = 175.05' L = 50.98' T = 13.97'	CURVE No. 13 A = 45.48101' R = 150.78' L = 128.81' T = 65.25'	CURVE No. 14 A = 48.50327' R = 112.24' L = 111.52' T = 60.86'	CURVE No. 15 A = 58.53272' R = 112.24' L = 111.52' T = 60.86'	CURVE No. 16 A = 10.03228' R = 545.73' L = 36.75' T = 48.50'	CURVE No. 17 A = 31.12734' R = 179.05' L = 97.52' T = 50.01'	CURVE No. 18 A = 58.53272' R = 112.24' L = 111.52' T = 60.86'	CURVE No. 19 A = 115.60945' R = 20.00' L = 32.00' T = 20.00'	CURVE No. 20 A = 38.45424' R = 186.28' L = 128.81' T = 65.53'	CURVE No. 21 A = 58.53272' R = 121.00' L = 128.81' T = 65.53'	CURVE No. 22 A = 138.11233' R = 45.00' L = 106.53' T = 117.81'	CURVE No. 23 A = 138.11233' R = 45.00' L = 106.53' T = 117.81'	CURVE No. 24 A = 52.181818' R = 79.00' L = 104.37' T = 53.68'	CURVE No. 25 A = 78.47277' R = 20.00' L = 26.81' T = 15.85'	CURVE No. 26 A = 138.11233' R = 45.00' L = 106.53' T = 117.81'	CURVE No. 27 A = 50.001000' R = 45.00' L = 106.53' T = 20.00'	CURVE No. 28 A = 90.001000' R = 31.42' L = 30.00' T = 116.28'	CURVE No. 29 A = 65.155000' R = 79.00' L = 79.32' T = 44.81'	CURVE No. 30 A = 32.25331' R = 130.22' L = 79.69' T = 37.869'	CURVE No. 31 A = 52.07101' R = 128.42' L = 104.37' T = 53.68'	CURVE No. 32 A = 47.181818' R = 79.00' L = 104.37' T = 53.68'	CURVE No. 33 A = 52.07101' R = 128.42' L = 104.37' T = 53.68'	CURVE No. 34 A = 89.46011' R = 62.2895' L = 78.34' T = 49.80'	CURVE No. 35 A = 11.4537' R = 130.22' L = 26.73' T = 1.48'
---	---	--	---	--	---	---	---	---	---	---	--	---	---	---	--	--	---	--	---	---	--	--	---	---	--	---	---	--	---	---	---	---	---	--

105163  
105163

EXHIBIT B 61

Book B Plats Page 61



**"4 Peaks Subdivision"**  
Skamania County, Wa.



Scale: 1" = 300'

Basis of Bearing: Survey recorded in Vol. 2, on page 163, records of Skamania Co., Wa.

- o Represents iron rod set with plastic cap marked L.S. 9130
- Represents iron pipe found, as shown on survey plat

NOTE:  
5/8" iron rods replaced with 2" iron pipe filled with concrete, as per Section 14.40, of the Skamania Co. Subdivision Ordinance.

**SURVEYORS CERTIFICATE**

I, Russell B. Bass, do hereby certify that this plat is based upon an actual survey and subdivision of Sec. 8, T. 7 N., R. 6 E. W.M., that the distances, courses and angles are shown thereon correctly and that proper monuments have been staked correctly on the ground.

Russell B. Bass  
Russell B. Bass L.S. No. 9130

Sept. 9, 1985  
Date



**AUDITORS CERTIFICATE**

Filed for record at the request of the Mt. St. Helens Relocation Assoc., this 1<sup>st</sup> day of MAY, 1985 at 10:51 AM/PM, and recorded in Vol. B of plats, on page 60-61, records of Skamania Co., Wa.

Clay M. Olson  
County Auditor

E. Myford  
Deputy Auditor