

Lake Wilcox Towns



A PRESTIGIOUS NEW COMMUNITY NESTLED AMONG LAKE WILCOX AND THE BEAUTIFUL OAK RIDGES MORaine.

Centralpark Homes



Centralpark is a company built on reputable business practices, driven by a culture of genuine vision, design integrity, and modern excellence, while continually striving for contemporary innovation.

Centralpark Homes



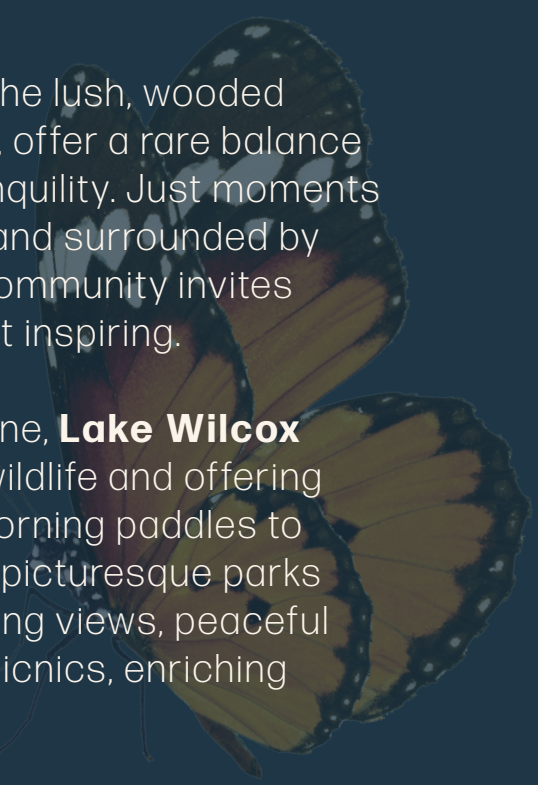
Lake Wilcox

Towns



Lake Wilcox Towns, nestled within the lush, wooded landscape of the Oak Ridges Moraine, offer a rare balance of refined urban living and natural tranquility. Just moments from Lake Wilcox and Sunset Beach, and surrounded by premier golf courses, this exclusive community invites residents to experience life at its most inspiring.

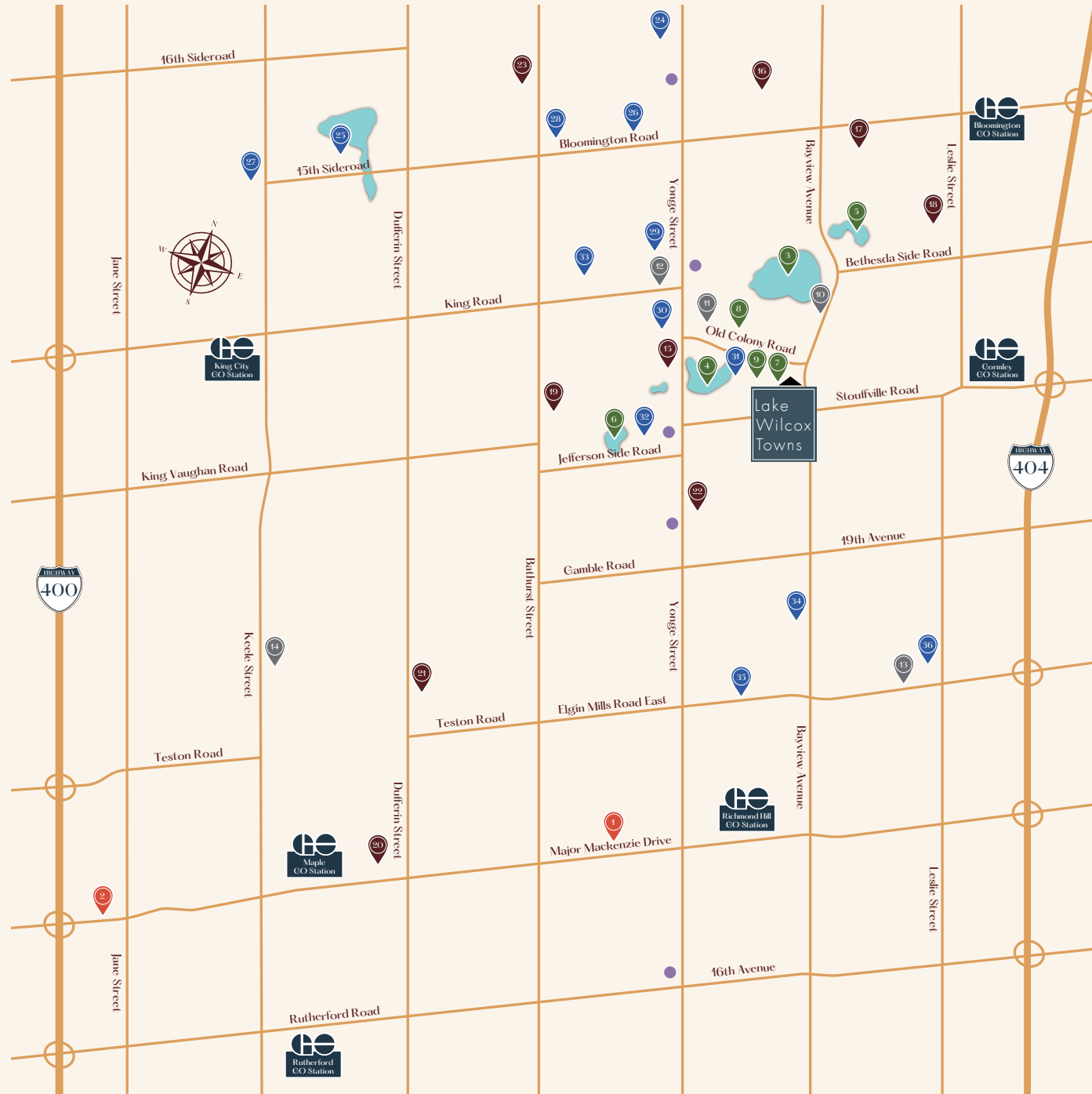
As the largest kettle lake on the Moraine, **Lake Wilcox** is a natural jewel – home to diverse wildlife and offering year-round recreation, from serene morning paddles to winter skating under open skies. Four picturesque parks along the shoreline provide breathtaking views, peaceful trails, and perfect spots for lakeside picnics, enriching every moment of your lifestyle.





A collection of Modern Towns in Richmond Hill

Surrounded by every amenity imaginable – from charming cafés and boutique shops to lush parks and reputable schools – these modern townhomes offer an unparalleled lifestyle of comfort and convenience. With Highways 404, 407, and 400 just minutes away, you're seamlessly connected to the very best of the GTA.



Amenities

LEGEND

1. Mackenzie Health Hospital
2. Cortellucci Vaughan Hospital
3. Lake Wilcox
4. Bond Lake
5. Lake St. George
6. Philips Lake
7. Larchmere Parkette
8. Moraine Park
9. William Bond Park
10. Oak Ridges Community Centre & Pool
11. Bond Lake Arena
12. Oak Ridges Library
13. Richmond Green Sports Centre and Park
14. North Maple Regional Park
15. Oak Ridges Trail
16. Beacon Hall Golf Club
17. Bloomington Downs Golf Course
18. DiamondBack Golf Club
19. Bathurst Glen Golf Course
20. Eagles Nest Golf Club
21. Maple Downs Golf & Country Club
22. Summit Golf & Country Club
23. King's Riding Golf Club
24. St. Andrew's College and St. Anne's School
25. Seneca King Campus
26. Cardinal Carter Catholic High School
27. Villanova College
28. Ecole secondaire catholique Renaissance
29. Dr. Bette Stephenson Centre for Learning
30. Academy for Gifted Children - PACE
31. Bond Lake Public School
32. Macleod's Landing Public School
33. Richmond Hill Oakridges YMCA Before and After School Program
34. Holy Trinity School
35. TMS Private School
36. Richmond Green SS

● Shopping

WHEELWRIGHT DRIVE

OLD COLONY ROAD

PRIVATE LANE

BAYVIEW AVENUE

- Rear Lane Modern Towns
- Street Modern Towns

BLOCK 2

14 TH-2E	13 TH-2	12 TH-2	11 TH-2	10 TH-2	9 TH-2E
-------------	------------	------------	------------	------------	------------

BLOCK 3

15 TH-1C	16 TH-1	17 TH-1	18 TH-1	19 TH-1C
-------------	------------	------------	------------	-------------

BLOCK 1

TH-1CS	1
TH-1	2
TH-1	3
TH-1	4
TH-1	5
TH-1	6
TH-1	7
TH-1C	8

Existing Residential

Map not to scale. All dimensions are approximate and subject to change at the discretion of the vendor. E.&O.E. Landscape is artist's concept.

REAR LANE MODERN TOWNS



STREET MODERN TOWNS



The Cedar

TH-1 - 1,746 SQ.FT.

Optional Basement 138 sq.ft.

Open-concept living shines on the second level, complete with a large terrace for entertaining and urban lifestyle enjoyment. The third level offers three bedrooms, including a primary suite with its own private walkout balcony.



TH-1

TH-1 FLIPPED

The Spruce

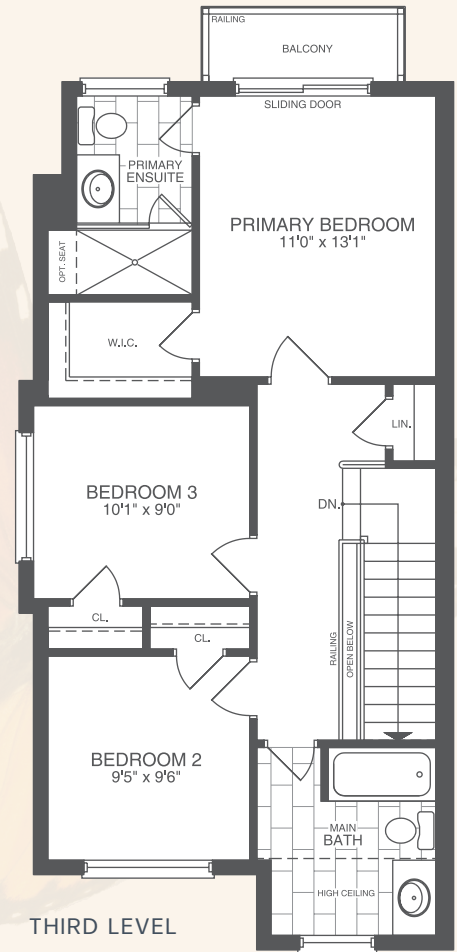
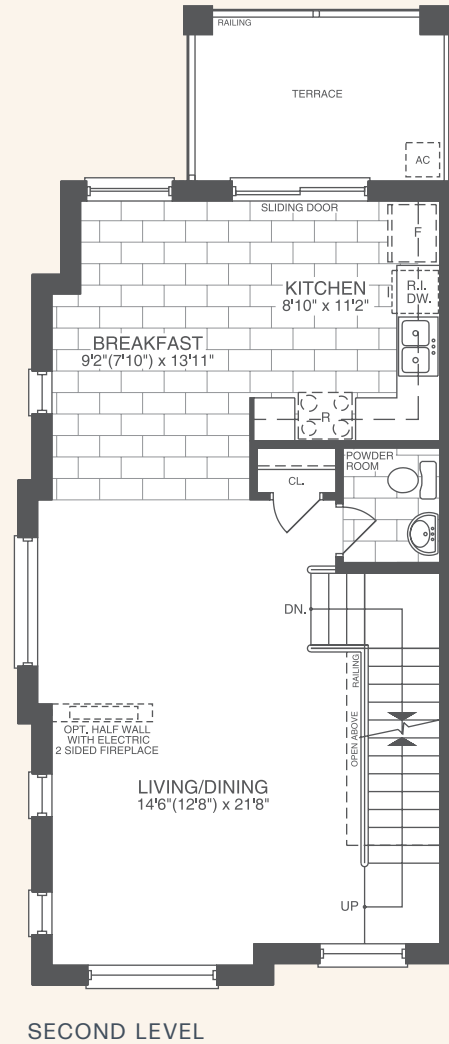
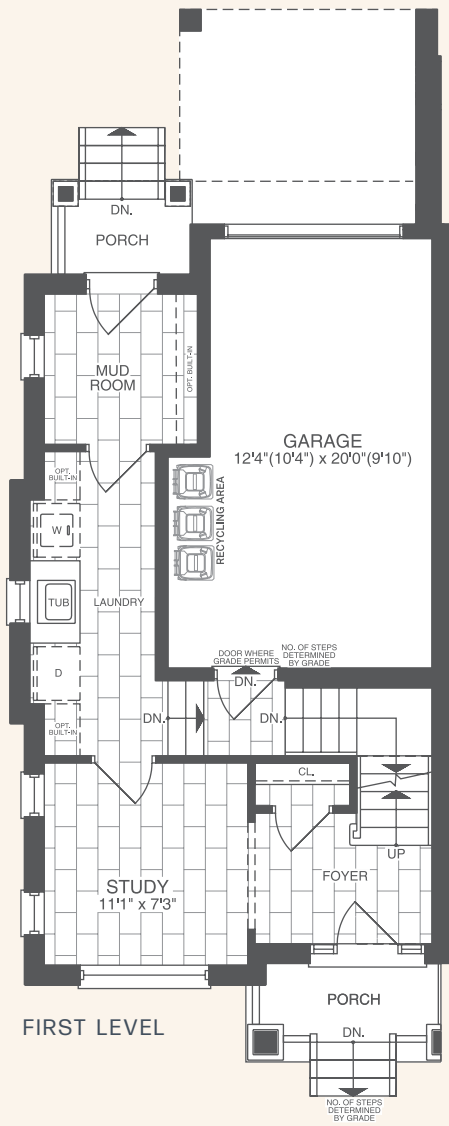
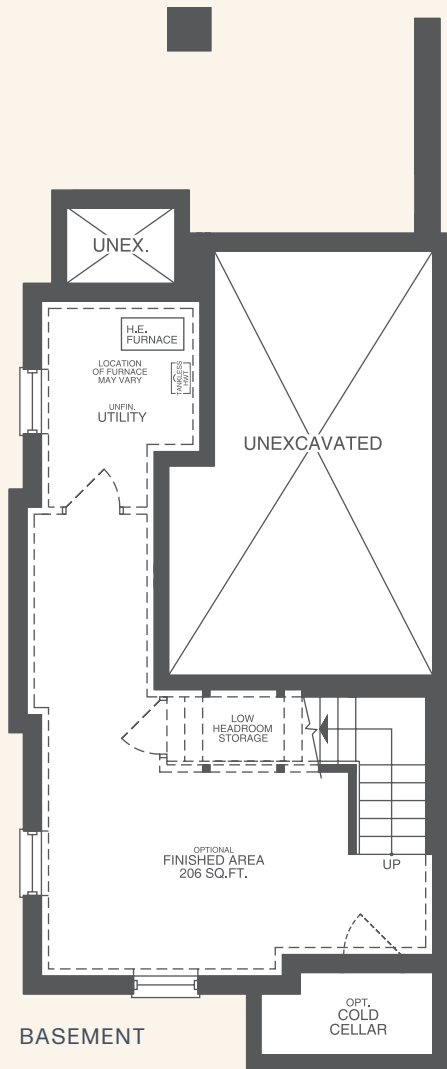
TH-1C - 1,893 SQ.FT.

Includes 8 sq.ft. of open area
Optional Basement 203 sq.ft.

The first floor offers a mudroom, spacious laundry, and a dedicated study area. The second level showcases an open-concept layout with a large amenities terrace, perfect for entertaining or relaxing. The third level features three bedrooms and two bathrooms, including a luxurious primary suite with its own outdoor sitting area.



TH-1C



NOTE: Orientation of home may be reversed and purchaser agrees to accept the same. Number of risers may vary at any exterior entranceways due to grading variance. Actual usable floor space may vary from stated floor area. All renderings are artist's impression. Dimensions, specifications, architectural and mechanical detailing are subject to minor modifications. Unit setback and roofline may vary due to siting. E. & O. E.

The Maple

TH-1CS - 1,903 SQ.FT.

Includes 10 sq.ft. of open area

Optional Basement 157 sq.ft.

This unique corner unit combines style and functionality. The first floor features a mudroom, large laundry, and dual entries. Upstairs, the open-concept layout flows onto a private terrace. The third level offers three bedrooms and two bathrooms, with the second bedroom opening to its own outdoor sitting area.



TH-1CS

The Bluebeard Lily

TH-2 - 1,938 SQ.FT.

Includes 8 sq.ft. of open area

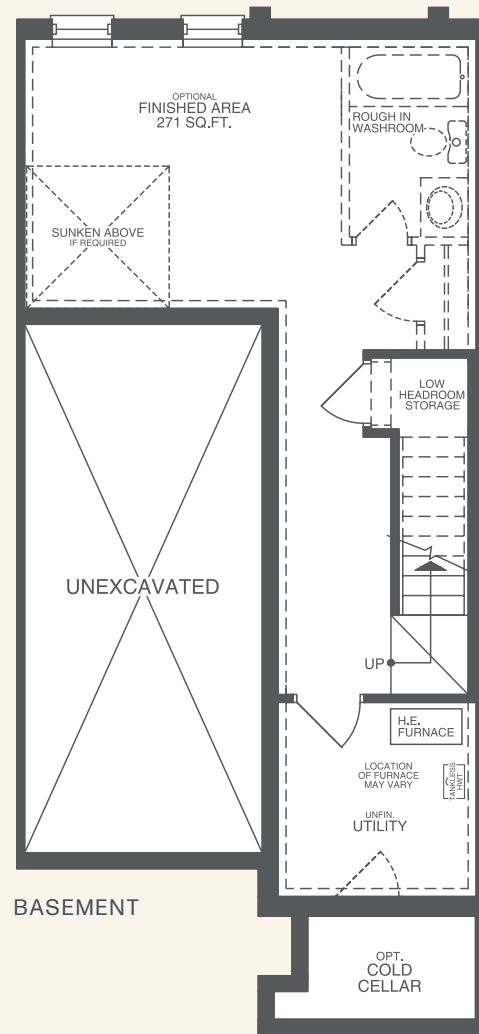
Optional Basement 271 sq.ft.

The first floor boasts a spacious recreation room, perfect for entertaining or relaxing. The second level features a striking, oversized kitchen with a central island and private terrace. The third level offers three beautifully designed bedrooms and two elegant bathrooms, including a luxurious primary suite with its own balcony.

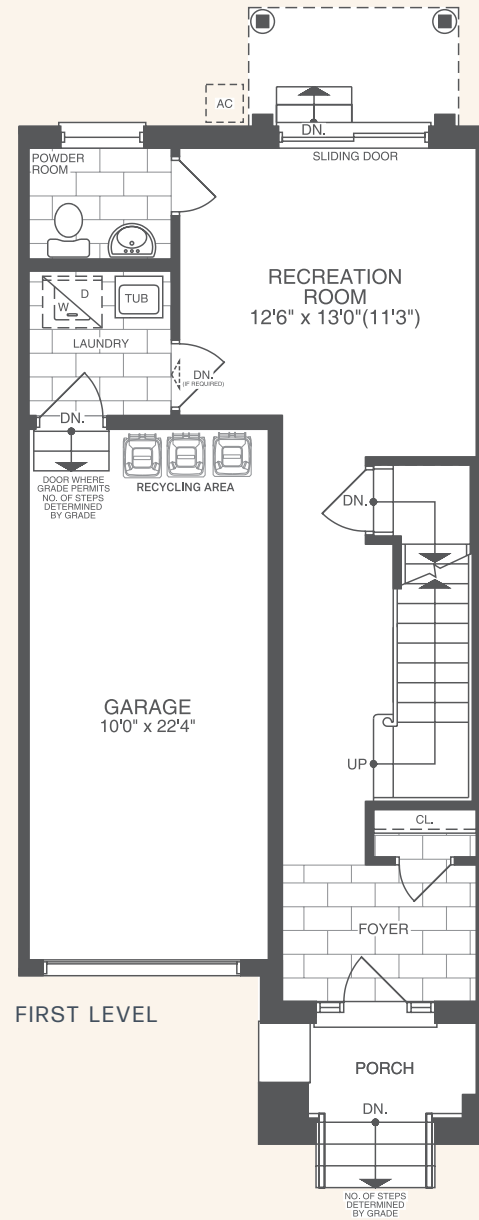


TH-2 FLIPPED

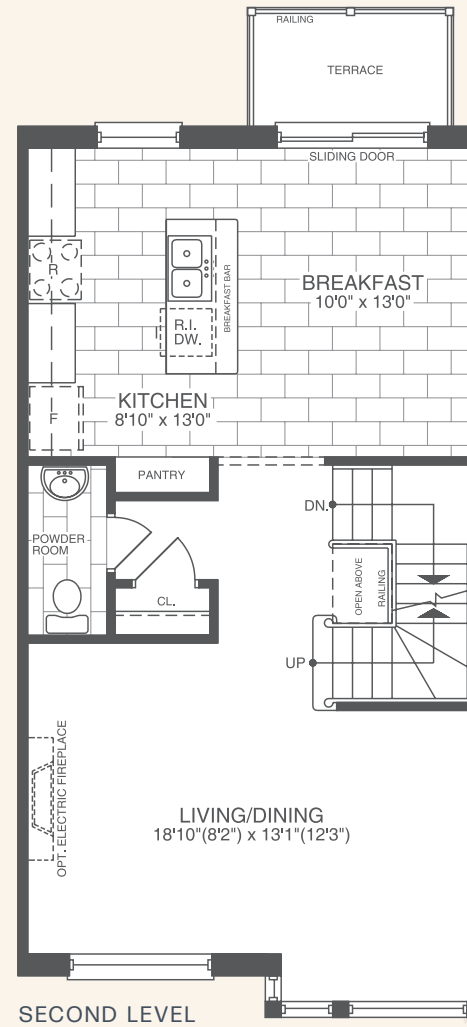
TH-2



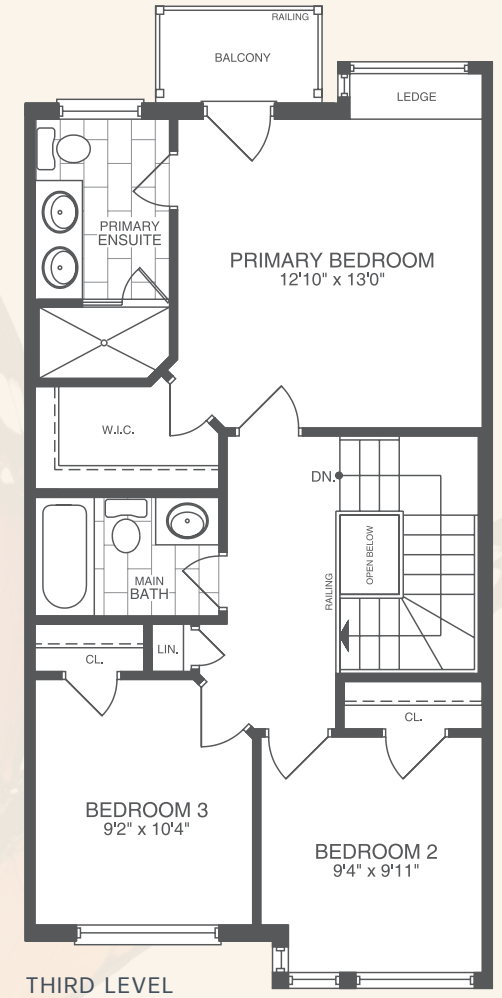
BASEMENT



FIRST LEVEL



SECOND LEVEL



THIRD LEVEL

NOTE: Orientation of home may be reversed and purchaser agrees to accept the same. Number of risers may vary at any exterior entranceways due to grading variance. Actual usable floor space may vary from stated floor area. All renderings are artist's impression. Dimensions, specifications, architectural and mechanical detailing are subject to minor modifications. Unit setback and roofline may vary due to siting. E. & O. E.

The Water Lily

TH-2E - 1,984 SQ.FT.

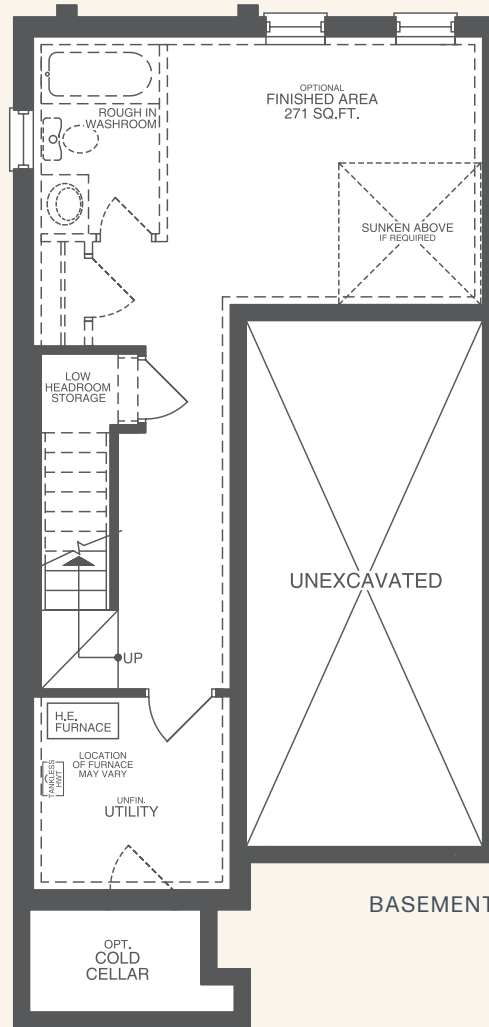
Includes 8 sq.ft. of open area

Optional Basement 271 sq.ft.

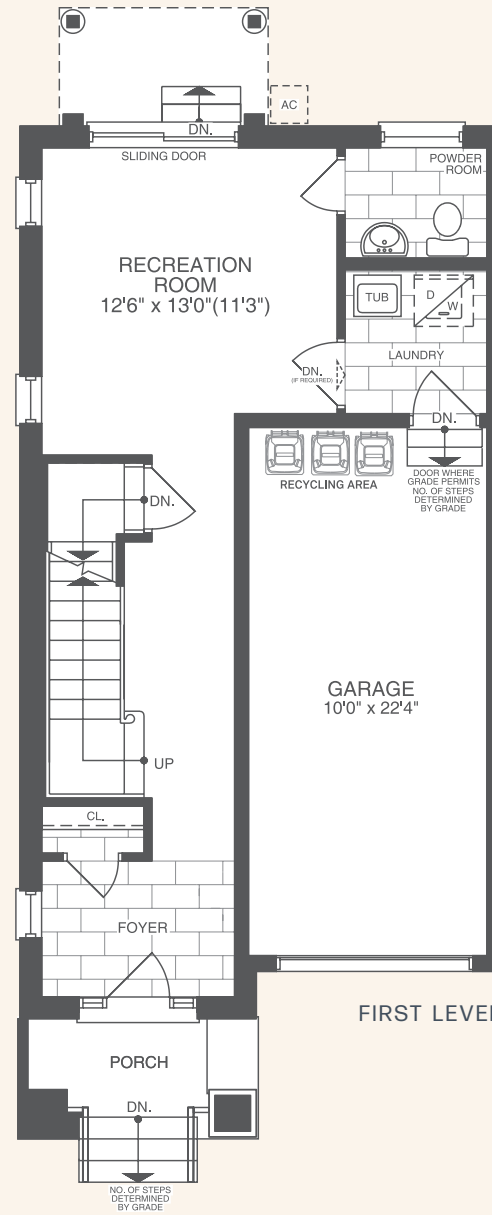
This elegant end unit features a spacious recreation room ideal for entertaining, along with a convenient laundry area and powder room on the main level. The second floor showcases a stylish, oversized kitchen with a large island and an inviting terrace – perfect for casual gatherings or quiet moments outdoors. The third level includes three bedrooms and two bathrooms, highlighted by a luxurious primary suite with a private balcony to enjoy beautiful sunrises and sunsets.



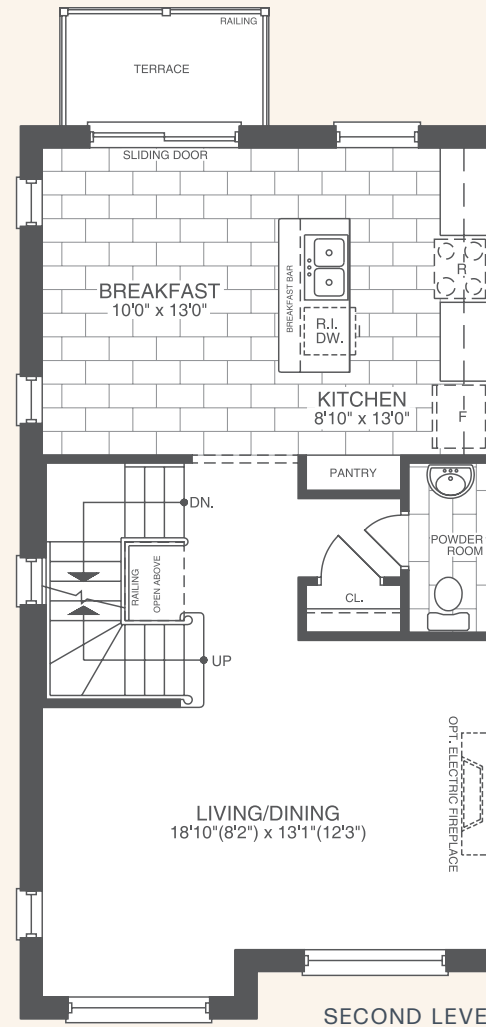
TH-2E



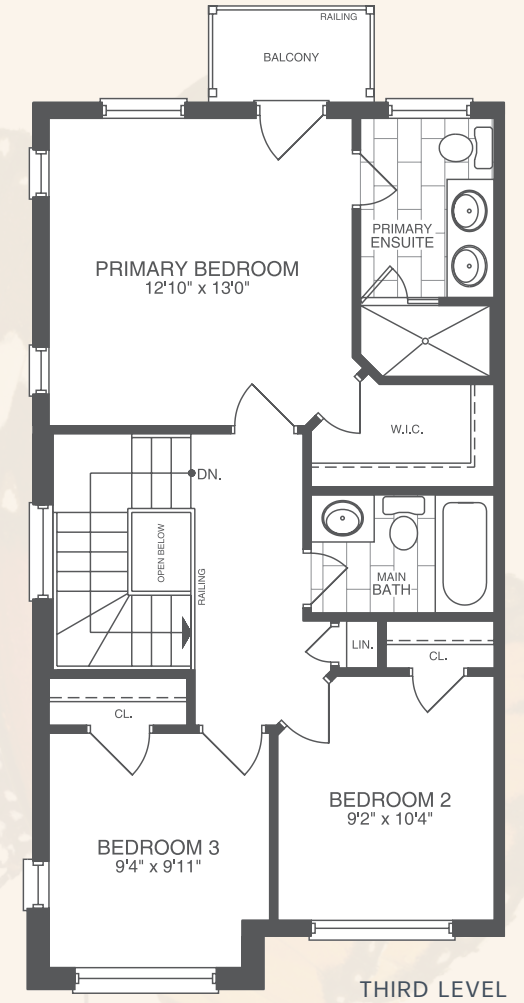
BASEMENT



FIRST LEVEL



SECOND LEVEL



THIRD LEVEL

NOTE: Orientation of home may be reversed and purchaser agrees to accept the same. Number of risers may vary at any exterior entranceways due to grading variance. Actual usable floor space may vary from stated floor area. All renderings are artist's impression. Dimensions, specifications, architectural and mechanical detailing are subject to minor modifications. Unit setback and roofline may vary due to siting. E. & O. E.

Features and Finishes



Lake Wilcox Towns are designed for those who appreciate luxurious living while embracing the serenity and tranquility of nature. Each suite is thoughtfully planned and proportioned to deliver a distinctive living experience. The open-concept spaces are bright and inviting, creating an atmosphere of comfort and elegance for everyday life. More than just a residence, your Lake Wilcox Towns home is a true reflection of your lifestyle—where luxury and peace exist in perfect harmony.



THE
Centralpark Homes
DIFFERENCE

Premium Features

- Finished Basements
- EV Fast-Charging Ready
- Air Conditioning Included
- Electric Floor Heating (Bathrooms)
- Energy-Efficient Tankless Water Heater (Instant Hot Water)
- Dual-Zone Heating & Cooling System
- Zone 1: Basement & Ground Floor
- Zone 2: Second & Third Floors
- High-Velocity HVAC System
- Smart Thermostats
- Multi-Point Locking Door Systems
- Garage Sink Plumbing, Heating, and Door Opener Rough-Ins
- Gas BBQ Connection (Block 2)

Interior Finishes

- Energy-Efficient LED Pot Lights
- Electric Fireplaces
- Engineered Hardwood Flooring on Main Floor
- Quartz Countertops Throughout
- Frameless Glass Shower Door in Master Ensuite

Appliances Included

- Bosch 30" Gas Range
- Bosch 36" French-Door Stainless-Steel Refrigerator
- Bosch Dishwasher
- LG Washer & Dryer

Financing

- *Developer Financing (VTB) Available to Qualified Buyers*

All features, finishes, specifications, and materials are subject to change without notice at the builder's discretion.



centralparkhomes.ca