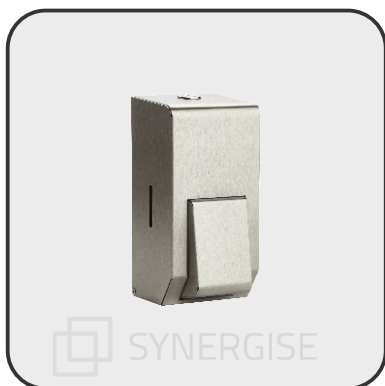


500ML SOAP DISPENSER



- CONSTRUCTED IN A HIGH GRADE STAINLESS STEEL (304L GRADE S/S / 240G).
- FITTED WITH A QUALITY PUSH LOCK WITH KEY OPERATION.
- AVAILABLE IN TWO DIFFERENT FINISHES.
- TRANSLUCENT PUMP WITH MARINE GRADE STAINLESS STEEL SPRING.
- 500ML RESERVOIR WITH 1ML PUMP.
- PERFECT UNIT FOR MORE COMPACT WASHROOMS WITH LOWER TRAFFIC.
- PRODUCT BRANDING AVAILABLE FOR ADDED PERSONALISATION.
- DESIGNED & HAND BUILT IN THE UK.

AVAILABLE IN MULTIPLE FINISHES



BRUSHED S/S

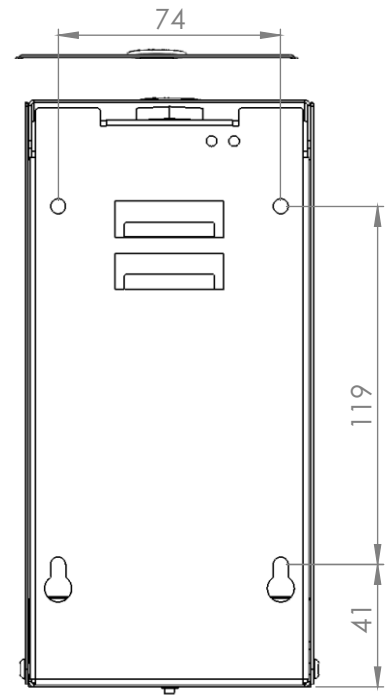
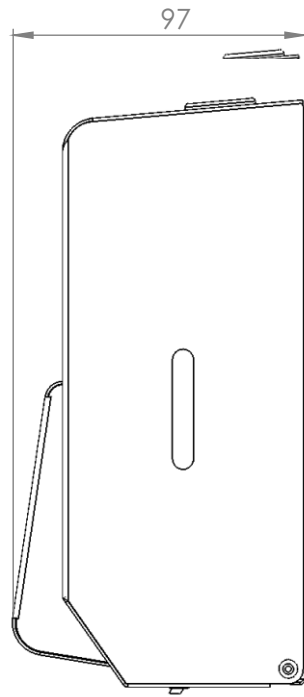
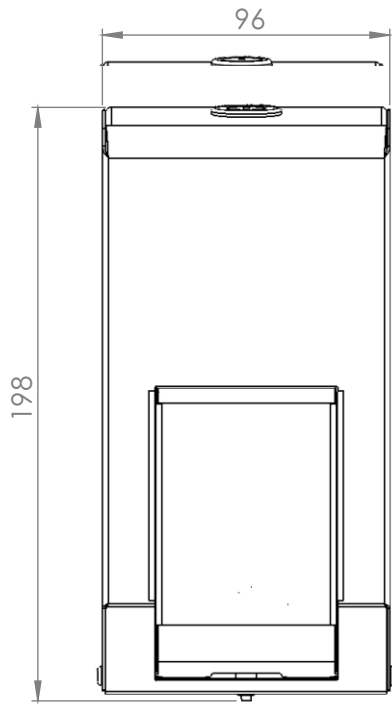
CODE:
PL10LMBS



POLISHED S/S

CODE:
PL10LMPS

DIMENSIONS IN MM:-



OPEN VIEW OF DISPENSER:-



THE SYMBOL OF A GENUINE DISPENSER