

Installation Instructions For Synergise / Graphite / Endurance Mini / Maxi Jumbo Dispenser

Box Contents:

- 1 Dispenser
- 1 Opening Key
- 4 Fitting Screws and Plugs

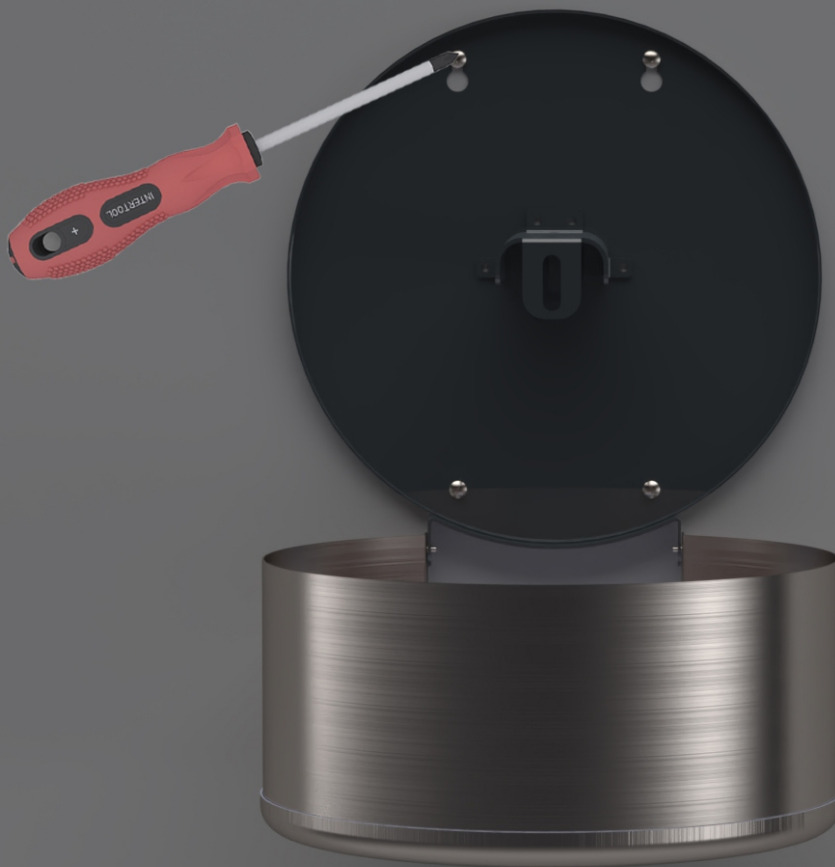
Tools Required:

- Drill
- Screwdriver

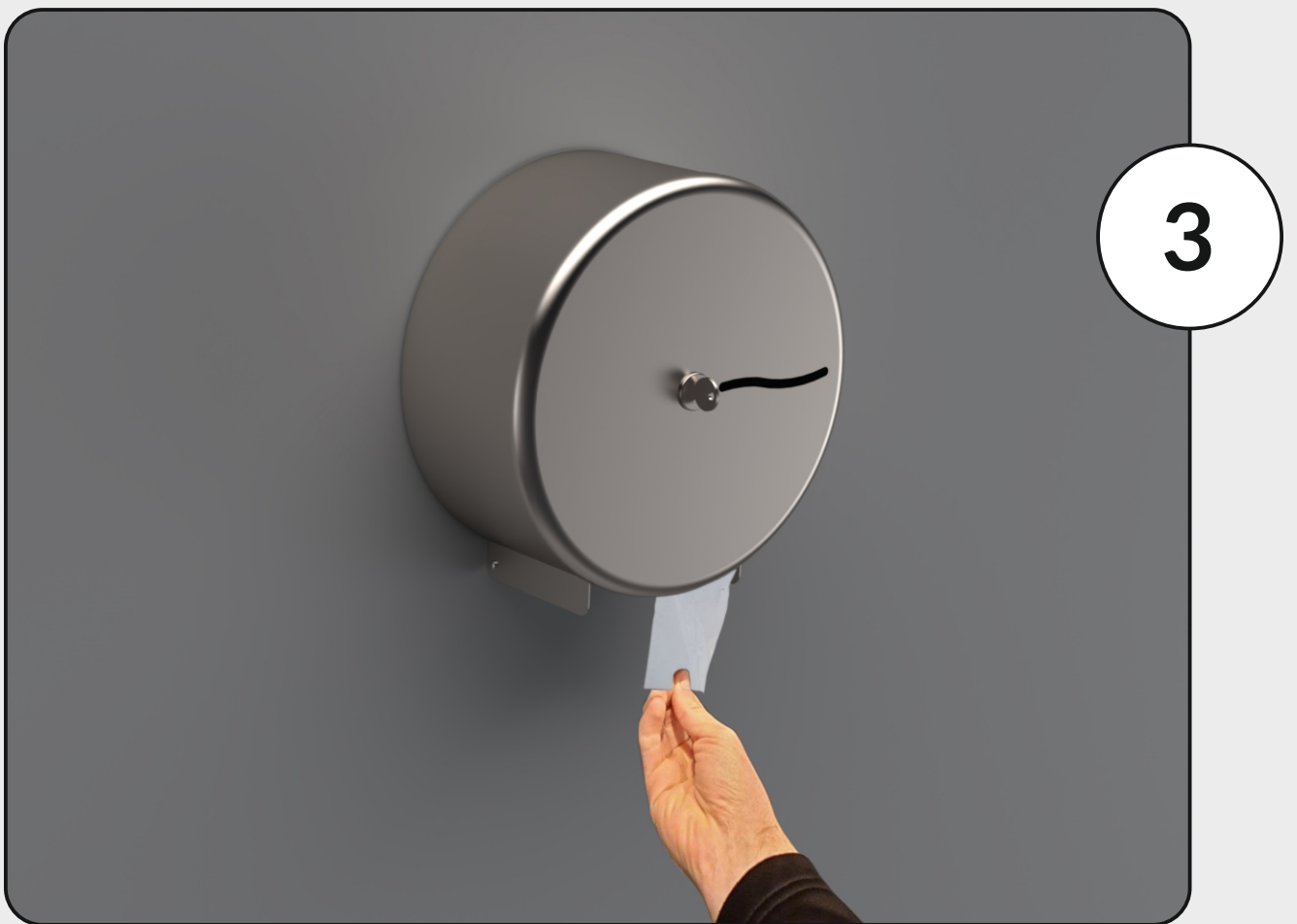


Open the unit with the key provided.

2



Drill the marked out holes to the size of the fixings provided then use a screwdriver to fix the unit to the wall. The unit should be hand tight to the wall.



Add the jumbo roll and close the unit.
Remove the key and the unit is now
operational.