

10" MINI JUMBO DISPENSER



- CONSTRUCTED IN A HIGH GRADE STAINLESS STEEL (304L GRADE S/S / 240G).
- FITTED WITH A QUALITY LOCK WITH KEY OPERATION.
- AVAILABLE IN FOUR DIFFERENT FINISHES.
- HOLDS X1 10" MINI JUMBO ROLL AT EITHER 2¼" OR 3" CORE
- CONVENIENT LEVEL INDICATOR ON THE FRONT FACE OF THE UNIT.
- PERFECT UNIT FOR ANY WASHROOM ENVIRONMENT.
- PRODUCT BRANDING AVAILABLE FOR ADDED PERSONALISATION.
- DESIGNED & HAND BUILT IN THE UK.

AVAILABLE IN MULTIPLE FINISHES



BRUSHED S/S

CODE:
PLJ40MBS



POLISHED S/S

CODE:
PLJ40MPS



GRAPHITE GREY

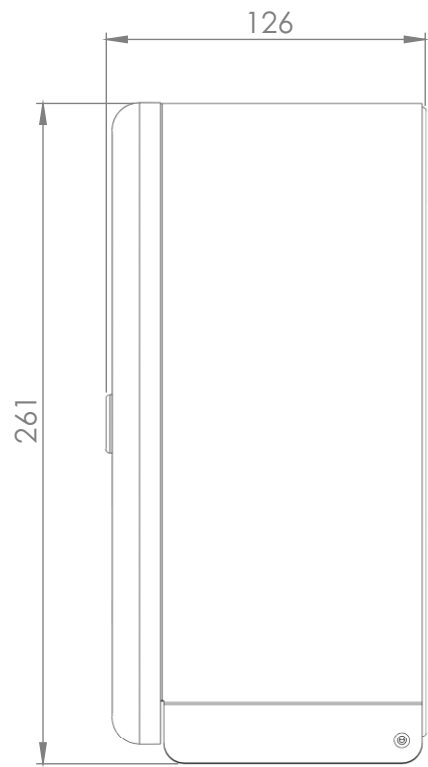
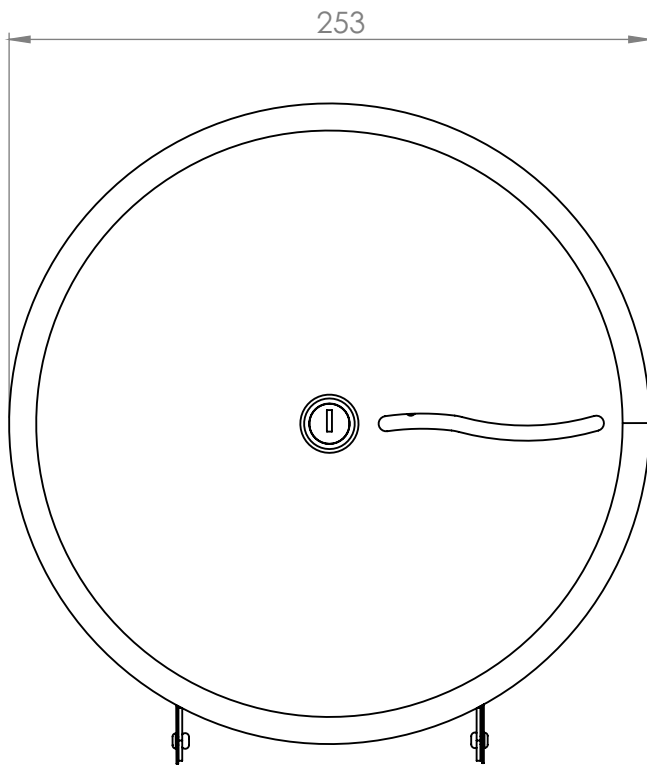
CODE:
PLJ40MGY



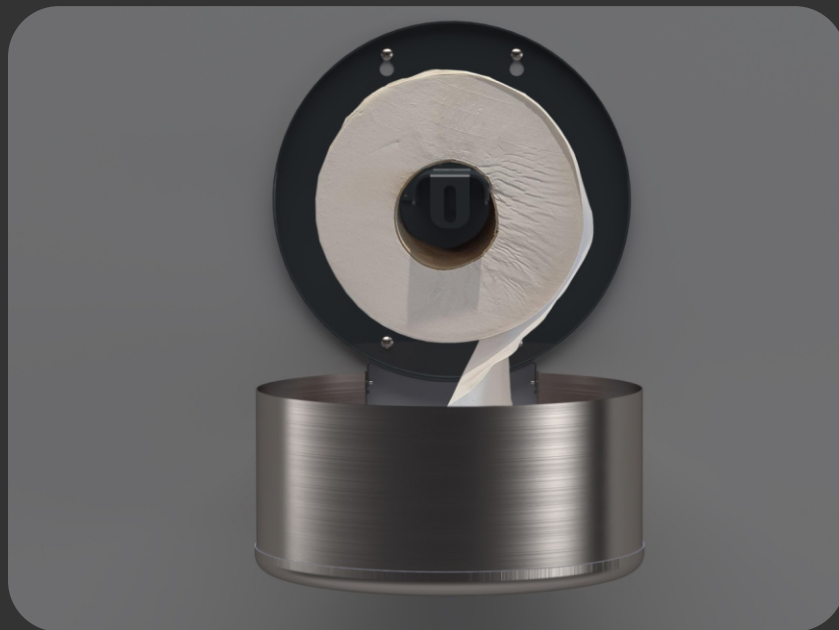
WHITE METAL

CODE:
PLJ40MWH

DIMENSIONS IN MM:-



OPEN VIEW OF DISPENSER:-



THE SYMBOL OF A GENUINE DISPENSER