



Installation Instructions For Synergise Twin Bottle Holder

Box Contents:

- 1 Dispenser
- 1 Opening Key
- 4 Fitting Screws and Plugs

Tools Required:

- Drill
- Screwdriver

1



Open the unit with the key provided.

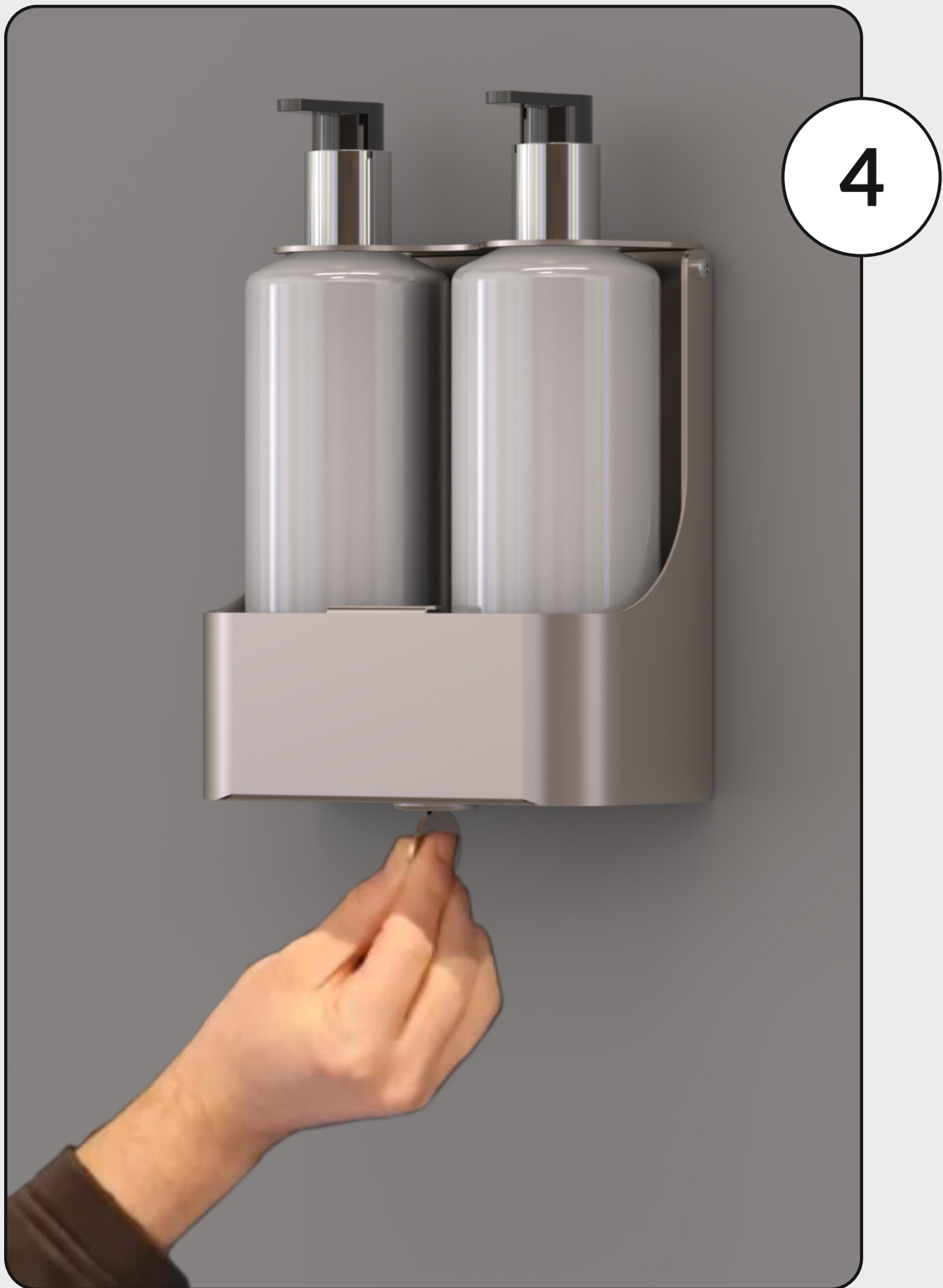


Lift the cover and locate and install the unit with the fixings provided making sure the head is also screwed in to the height of the bottle (The head is adjustable for different bottle sizes).

3



Place the bottles in the holder with the spout of the bottles going through the head of the bottle holder.



Close the holder and remove the key.
The unit is now operational.