



CPM
INVESTING

RSP | Invesco® S&P 500® Equal Weight ETF
Three-week Horizon
Jeffrey Hansen
www.cpminvesting.com

***This three-week forecast of investor sentiment is an example of our sentiment forecasts.
Request a subscription to our six-week forecast: contact@cpminvesting.com***

Three-Week Forecasts (periods between shifts)		
Physics-Based	Long-Term Sentiment (qtrs):	4 (1-4 scale, 4=Most Optimistic) Figure 1
	Short-Term Sentiment (wks):	Pessimistic, then optimistic Figure 1
	Major Flash Sentiment:	None Figure 1
	Minor Flash Sentiment:	Optimism ending Mar 28, then pessimism Figure 1
	Market Price Momentum:	Stable, then moving higher in April Figure 3
Implied Economics-Based Sentiment:		Meaningfully Negative Figure 3

Video version: <https://youtu.be/0T78JNr8ATU>

Summary (data as of Mar 21 2025): Recent stock market behavior has been consistent with our sentiment forecasts. Recent price declines occurred during the expected multi-week period of naturally occurring pessimism. Actual declines in price momentum were greater than the predicted reduction in price momentum, which is consistent with the meaningfully negative *Implied Economics-Based Sentiment* readings of recent weeks.

Going forward, we expect greater investor optimism. Long-Term naturally occurring sentiment will become more optimistic over the forecast horizon. Short-Term sentiment will also be optimistic by the end of the forecast horizon. However, investors continue to have a meaningfully negative view of Economics-Based Sentiment, and this condition will likely dampen any price rebounds.

The Macro and Micro MRI suggest that the meaningfully negative Economics-Based Sentiment is not sufficiently negative to change the important trends of the market to negative slopes.

Notes:

Introductory video: <https://youtu.be/Czl67Md1s1w>

Web page for written notes: <https://cpminvesting.com/notes>



MRI and Sentiment Drivers

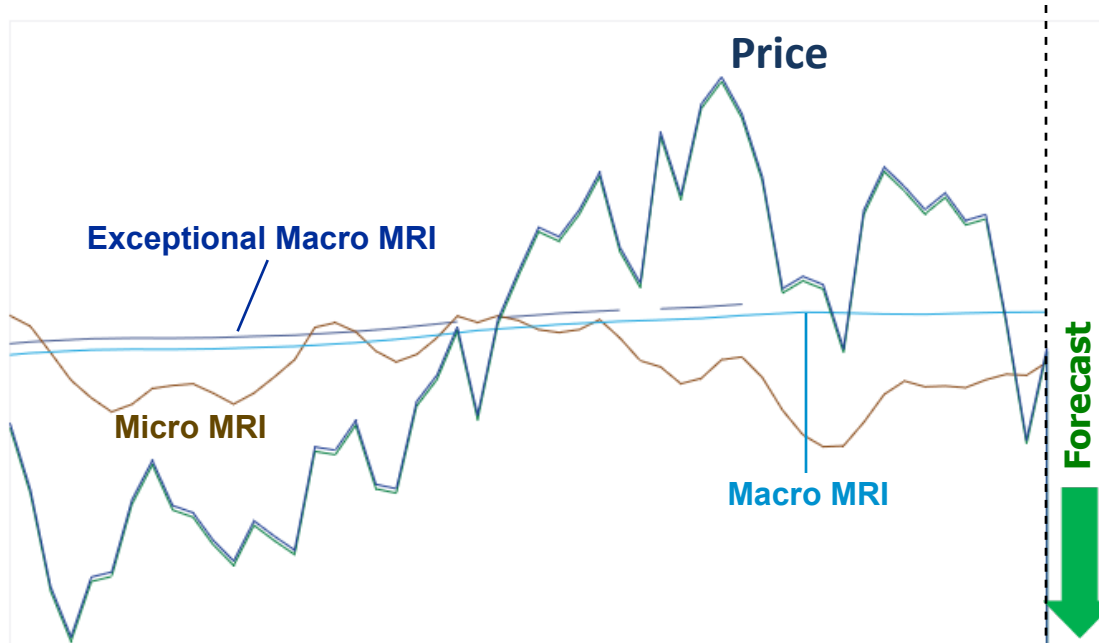
Fig. 1

Explanatory Video: https://youtu.be/YOpocz_C8is

Physics-Based Sentiment Forecasts ETF "RSP" | S&P 500® Equal Weighted Index as of Mar 21 2025 MRI and Their Drivers: Mar 22 2024 - Apr 11 2025

Asset Price and Return Acceleration

■ Price (log) ■ Macro MRI: 66 | Pos ■ Micro MRI: 48 | Pos ■ Excep Macro MRI | No

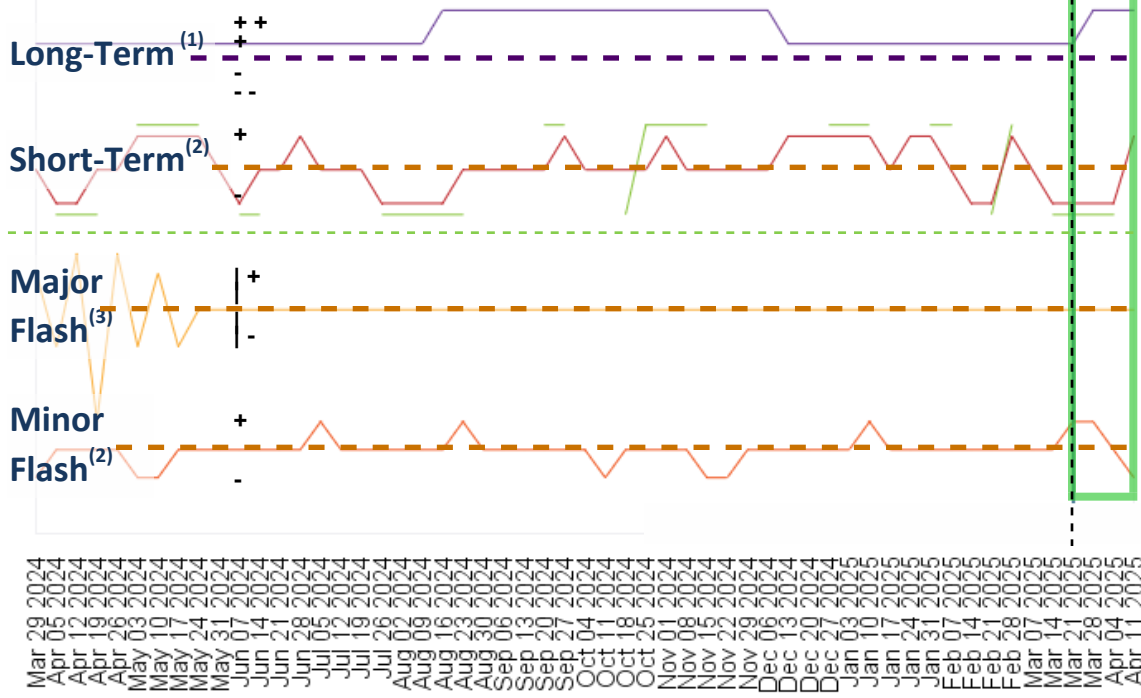


The Macro MRI is relatively high in its range (a level of 66 on a 0-100 scale) and has been at or near this level for several weeks. This indicates that the market does not currently have a strong positive or negative long-term trend.

The Micro MRI is in the upleg of its cycle at a moderate level of 48 on a 0-100 scale. This condition suggests that the market will move higher over the next few weeks.

The Exceptional Macro MRI is not present.

Physics-Based Drivers for Asset



The Long-Term Driver shifts to 'Most Optimistic' the week ending March 28.

The Short-Term Driver indicates pessimistic sentiment through April 4, then shifting to optimistic sentiment the week ending April 11.

This coming week will be the last for a minor flash of optimism. A minor flash of pessimism is expected the week ending April 11.

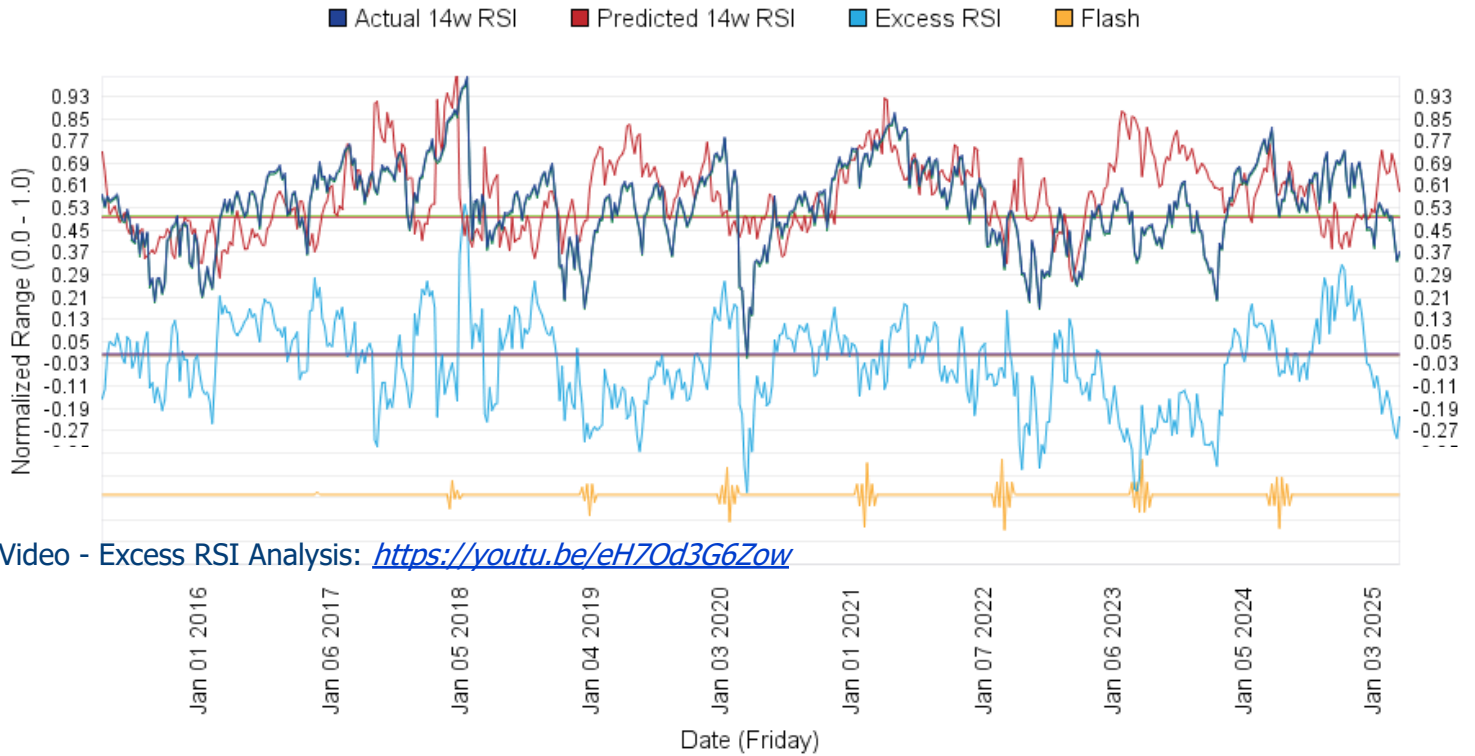
1) ++ 4 Most Optimistic 2) + 3 Optimistic Date (Friday) 3) | + Optimistic
 + 3 Moderately Optimistic 2 Neutral
 - 2 Moderately Pessimistic - 1 Pessimistic
 -- 1 Most Pessimistic

Source: CPM Investing LLC. Data using USD prices, except as noted. For more information, see the citations and legal disclaimer at the end of this document. Backtested/hypothetical results do not indicate actual or future returns. Current decision rules and parameters are used to simulate historical performance. If and when the rules and parameters are revised, those revisions may affect previously reported simulated historical performance characteristics. Market Resilience Index are registered trademarks of CPM Investing LLC. Copyright © 2014-2025 CPM Investing LLC. All Rights Reserved



RSI Analysis - Excess RSI Over 10-Year Horizon Fig. 2

RSP | Invesco® S&P 500® Equal Weight ETF
14-Week RSI - Actual and Predicted: Apr 3 2015 - Mar 21 2025



Video - Excess RSI Analysis: <https://youtu.be/eH7Od3G6Zow>

The 14-week RSI is a component within the Short-Term Driver shown in Figure 1. RSI is a widely used measure of asset price momentum. Our predicted RSI explains much of the weekly volatility in the actual RSI over the last several decades. | The upper portion of Figure 2 displays the predicted and actual 14-week RSI for an asset price (not shown) over the past 10 years. The light blue line in the middle of the figure, labeled "Excess RSI," represents the difference between the two series. High values of "Excess RSI" indicate stronger-than-expected price momentum, which may be caused by positive economic or market conditions. Conversely, low values suggest weaker-than-expected momentum, likely reflect negative conditions. Excess RSI reflects investor sentiment related to a range of factors including investor views of stock valuations, inflation, interest rates, and economic growth. | The Flash Driver is included for reference.

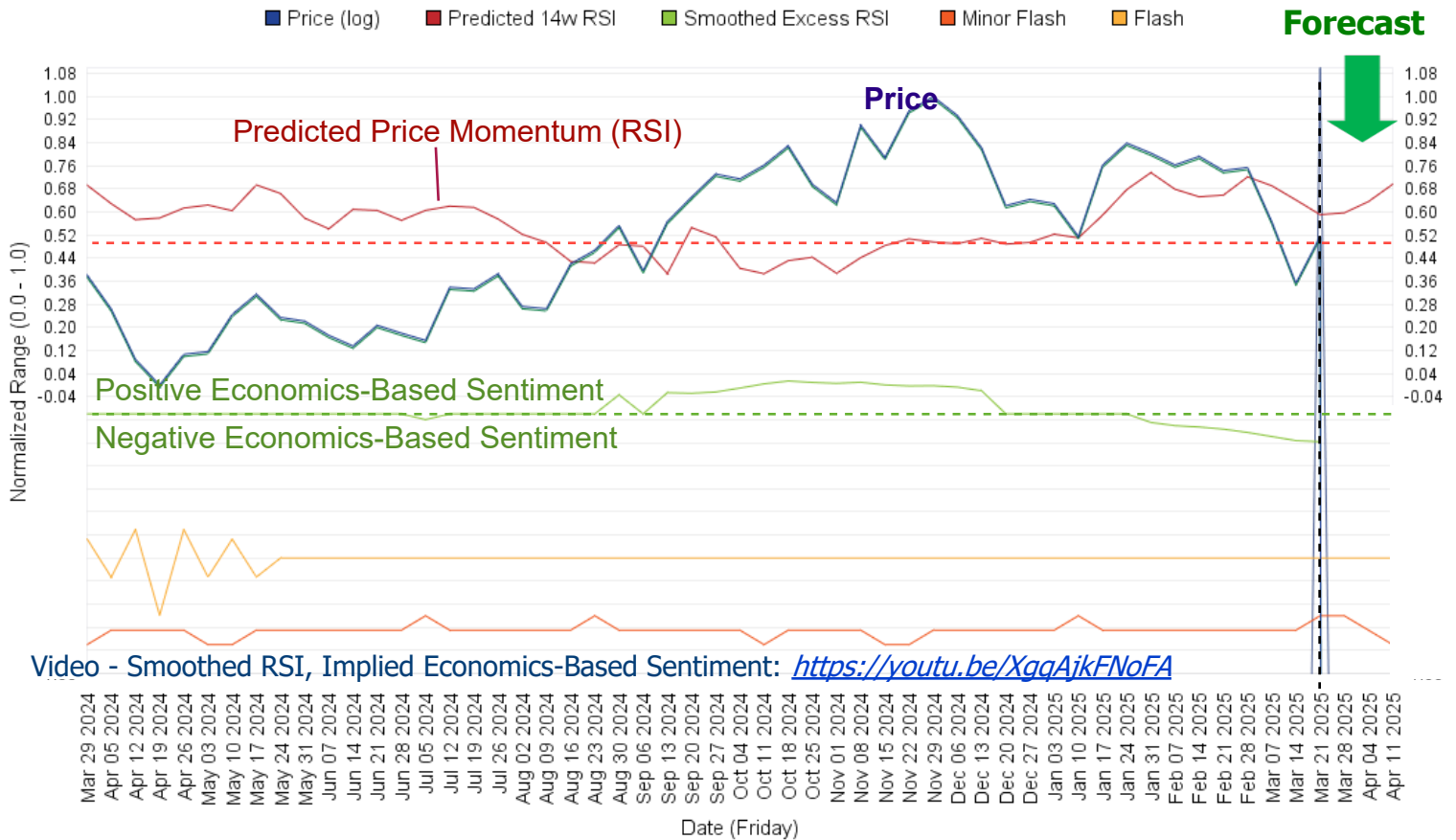
Comments (data as of Mar 21 2025): [No Change From Last Week] On the far right of Figure 2, the light blue line indicates that the 'Excess RSI' remains below the center line. This condition indicates that recent price momentum is well below what is expected based on physics-induced sentiment alone. It suggests that investors have a pessimistic outlook on economic, market, and other conditions. Excess RSI is now at an extremely low level compared to the 10-year period shown.



RSI Analysis - Predicted RSI, Implied Econ Sentiment

RSP | Invesco® S&P 500® Equal Weight ETF
 Index Price, Predicted 14-Week RSI: Mar 22 2024 - Apr 11 2025

Fig. 3



Video - Smoothed RSI, Implied Economics-Based Sentiment: <https://youtu.be/XgqAjkFNoFA>

Figure 3 shows the asset price (upper panel, heavy blue line) and the predicted price momentum, measured as the 14-week Relative Strength Index (RSI, red line). The "Smoothed Excess RSI" is displayed as the light green line, which deviates from its neutral level (represented by the dashed light green line) when the actual 14-week RSI of the market (not shown) remains meaningfully higher or lower than the expected level over several weeks. | Smoothed Excess RSI represents the "Implied Economics-Based Sentiment" and can signal unusually strong or weak sentiment related to economic and market conditions. It can identify when investors have a negative view of economic conditions even when the stock market moves higher. | Smoothed Excess RSI is calculated as the exponential moving average (EMA) of the difference between the actual 14-week RSI and the predicted 14-week RSI (labeled "Excess RSI" on the prior page). To emphasize meaningful deviations, only z-score values exceeding ± 0.5 are shown. A horizontal line indicates that the actual 14-week RSI is not meaningfully different from what is expected due to natural sentiment shifts.

Comments (data as of Mar 21 2025): The solid red line shows the predicted price momentum being neutral the week ending Mar 28 and then moving higher through the end of the forecast horizon.

Our Implied Economics-Based Sentiment measure is below the neutral level, shown as the dashed green line, indicating meaningfully negative sentiment related to real economic and market factors. This condition began at the end of January 2025 and is likely to continue over the next few weeks, even if the stock market moves higher. Should this condition continue, it will amplify price declines and dampen price recoveries.



Additional Notes

Links

Please contact us with questions: contact@cpminvesting.com

See additional notes: www.cpminvesting.com/notes

General information: www.cpminvesting.com

Join our Discord Server: <https://discord.gg/3c6327VwbW>

Citations

RSP is an ETF issued by Invesco that seeks to track the performance of the S&P 500[®] Equal Weighted Index, providing equal exposure to each of the 500 largest publicly traded U.S. companies.

For more information, visit: <https://www.invesco.com>

Other ETFs: iShares[®] Russell 2000 ETF (IWM), Invesco[®] QQQ Trust (QQQ), Invesco[®] S&P 500[®] Equal Weight ETF (RSP), and iShares[®] S&P GSCI[®] Commodity-Indexed Trust (GSG) are registered trademarks of their respective fund sponsors. The Nasdaq-100 Index[®] and S&P 500[®] are registered trademarks of Nasdaq, Inc. and S&P Dow Jones Indices LLC, respectively. These ETFs seek to track the performance of their respective indexes but are not sponsored, endorsed, or promoted by the index providers.

Background

Sentiment shifts occur periodically and are described as changes between:

Optimism|Pessimism Risk-on|Risk-off Resilience|Vulnerability Euphoria|Panic Aspirational thinking|Critical thinking

Total sentiment reflects economic forces and the naturally occurring forces that directly affect human behavior:

> Economic forces

- Investor views on economic conditions

- Investor views on market fundamentals

- Investor behavior (e.g., trend following, mean reverting, calendar effects, response to current events)

> Natural forces - Our focus is here

Naturally Occurring Shifts Have a Big Impact: Naturally occurring sentiment shifts have a bigger impact than many investors realize, and typically explain over 70% of the weekly variability of widely used index price momentum measures such as the 14-week Relative Strength Index (RSI). In addition, systematically predicting the future strength of the natural forces can be done more easily and reliably than predicting the future strength of economic forces.

We can Infer Impact of Economic Forces: When total sentiment deviates meaningfully from the natural shifts, we can infer that economic forces have a higher impact. If we take the actual RSI, for example, which reflects both economic and natural forces, and subtract the effect of the natural forces (represented by the predicted series), the difference is a reasonable gauge of the impact of the economic forces.

Early Indicators of Market Declines: Key early indicators of an impending market correction are a) when Excess RSI (EMA) moves to negative levels, and b) when actual sentiment metrics, such as one of our Market Resilience Indexes or the 14-week RSI, converges with a negatively trending predicted metric. See Note #4 on this page:

<https://cpminvesting.com/notes>

Two types of Physics-Based Sentiment Drivers: We maintain over three dozen physics-based drivers. There are two general types:

> Cyclic Drivers - sentiment changes gradually over time. The Long- and Short-Term drivers are cyclic.



Physics-Based Sentiment Forecasts - US Stocks | Mar 21 2025

> Episodic Drivers - sentiment changes abruptly. The Flash and Minor Flash drivers are episodic. Our forecasts of Episodic Drivers tend to be more accurate than those for the Cyclic Drivers.

For descriptions of each driver, see Note #2 on this page (<https://cpminvesting.com/notes>).

Two Sentiment-Related Metrics: We use two different metrics in our forecasts of sentiment. We forecast the 14-week Relative Strength Index (RSI) to measure price momentum for a market index. Upward sloping RSI indicates positive sentiment:

https://en.wikipedia.org/wiki/Relative_strength_index

We also forecast our own Market Resilience Index® (MRI) series. The MRI measure return acceleration. Upward sloping MRI indicate positive sentiment. MRI indicate short- and long-term shifts in market resilience for each market index:

- > Micro MRI - short-term trends lasting several weeks
- > Macro MRI - long-term trends lasting several quarters

The RSI and MRI have different features.

RSI (Relative Strength Index)

- Widely used in investment industry
- Effective in identifying market bottoms
- Less effective in identifying market tops. RSI can peak several months before the index price peaks.

MRI (Market Resilience Index)

- Designed to identify accurately both market tops and bottoms

For descriptions of each driver, see Note #1 on this page (<https://cpminvesting.com/notes>).

Legal Disclaimer:

The S&P 500® and the S&P 500 Equal Weight Index® are registered trademarks of S&P Dow Jones Indices LLC, a division of S&P Global. Dow Jones Industrial Average®, DJIA®, and Dow Jones® are trademarks of Dow Jones Trademark Holdings LLC.







Physics-Based Sentiment Forecasts - US Stocks | Mar 21 2025

Figure 2 Text Voiceover xxcThe Long-Term Driver indicates an important

