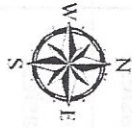
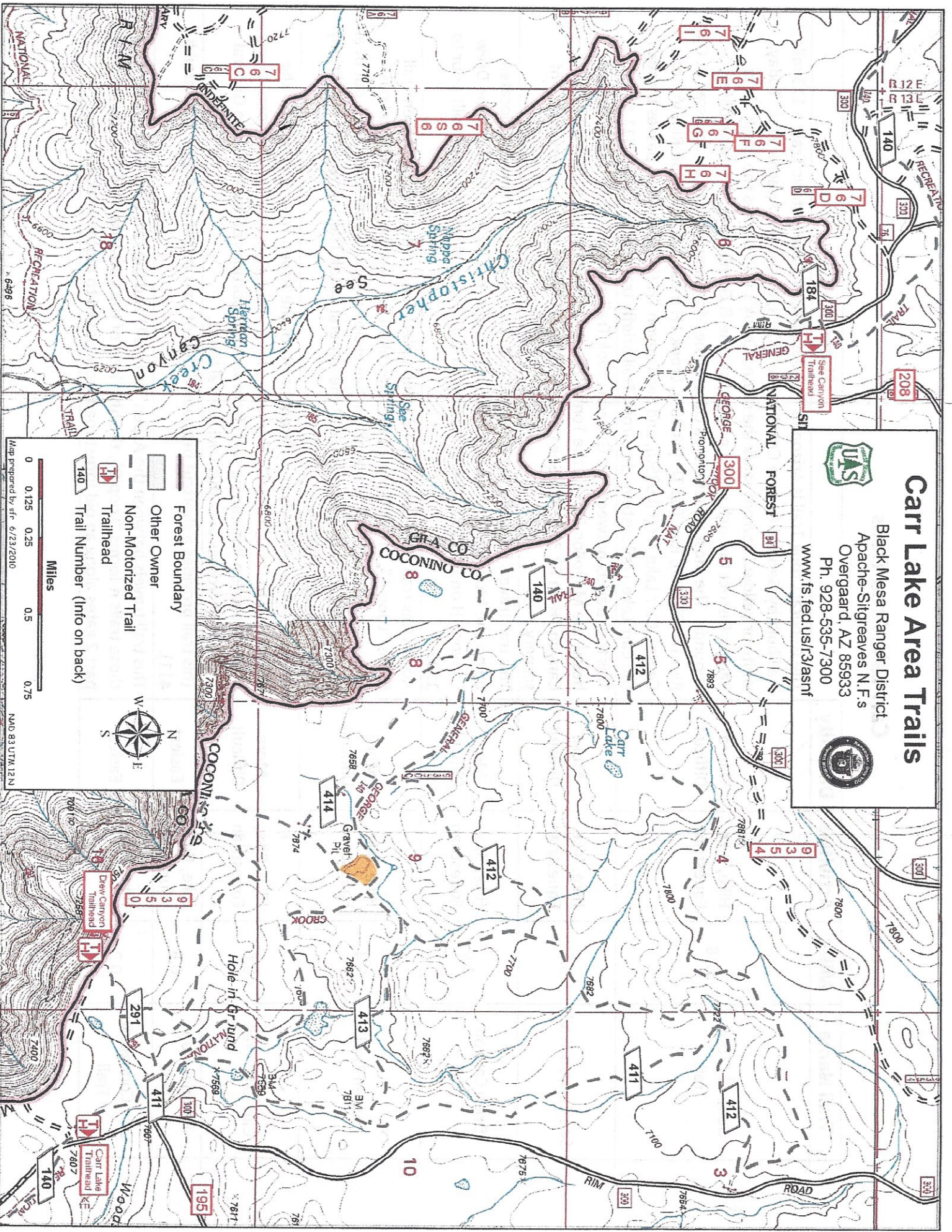


# Carr Lake Area Trails



Black Mesa Ranger District  
Apache-Sitgreaves N.F.s  
Overgaard, AZ 85933  
Ph. 928-535-7300  
[www.fs.fed.us/r3/asin/](http://www.fs.fed.us/r3/asin/)



- Forest Boundary
- Other Owner
- Non-Motorized Trail
- Trailhead
- Trail Number (Info on back)



Map prepared by s/rf 6/23/2010

NAD 83 UTM 12N

## Carr Lake Area Trails

Trail Name	Miles	Activities	Difficulty	Notes
General Crook Trail	57.8	Hike, Bike, Equestrian	More Difficult	The General Crook Trail is Arizona's first designated State Historic Trail; a 113 mile trail built by General George Crook in the 1870's, during the Apache War. Today, white or yellow chevrons mark the route. Crook's trail crosses the Black Mesa Ranger District through mixed ponderosa pine & Gambel oak, where wildlife abounds. The most popular area close to the Mogollon Rim can be accessed at Old Rim TH (FR 105), Rim Top TH (FR 300), Crook TH (near the Mogollon Rim Visitor's Center), Carr Lake TH (FR 9350), and See Canyon TH (FR 300). As it passes through the Carr Lake Trail System, the Crook Trail briefly travels along trails 411 and 412.
See Canyon Trail	3.5	Hike, Bike, Equestrian	More Difficult	This trail travels between the General Crook Trail and the Highline Trail located below the Mogollon Rim on the Tonto N.F. It can also be accessed from the See Canyon TH on FR 300. The See Canyon Trail is a Challenge that offers plenty of scenery.
Drew Canyon Trail	1.0	Hike, Bike, Equestrian	More Difficult	This trail travels between the General Crook Trail and the Highline Trail located below the Mogollon Rim on the Tonto N.F. It can also be accessed from the Drew Canyon TH on FR 9350. The Drew Canyon Trail is an old pioneer road built prior to 1909.
Aspen Trail	5.4	Hike, Bike, Equestrian	More Difficult	Access this trail from Carr Lake TH (vault toilet). The entirety of the Aspen Trail forms "Loop A", the red loop of the Carr Lake Trail System. After the trail passes either end of trail #412, it travels past an enclosure fence built to keep elk out of an area to protect young aspen trees. The General Crook Trail follows this trail briefly from Carr Lake Trailhead.
Carr Lake Trail	5.6	Hike, Bike, Equestrian	More Difficult	This trail starts and ends at different points of the Aspen Trail. It joins with the Aspen Trail to form "Loop C", the yellow loop of the Carr Lake Trail System. Views of the Mogollon Rim can be seen from western portions of the trail. The General Crook Trail crosses over this trail several times.
Boulder Hop Trail	0.8	Hike, Bike, Equestrian	Easiest	This trail provides a shortcut between different portions of the Aspen Trail (trail # 411).
Carr Connector Trail	0.3	Hike, Bike, Equestrian	Easiest	This trail travels between the Aspen Trail (411) and the Carr Lake Trail (412). With those trails it forms "Loop B", the blue loop of the Carr Lake Trail System. It travels past 2 gates along an old forest road, now closed to motor vehicles.