



Chevelon Canyon Lake Area Trails

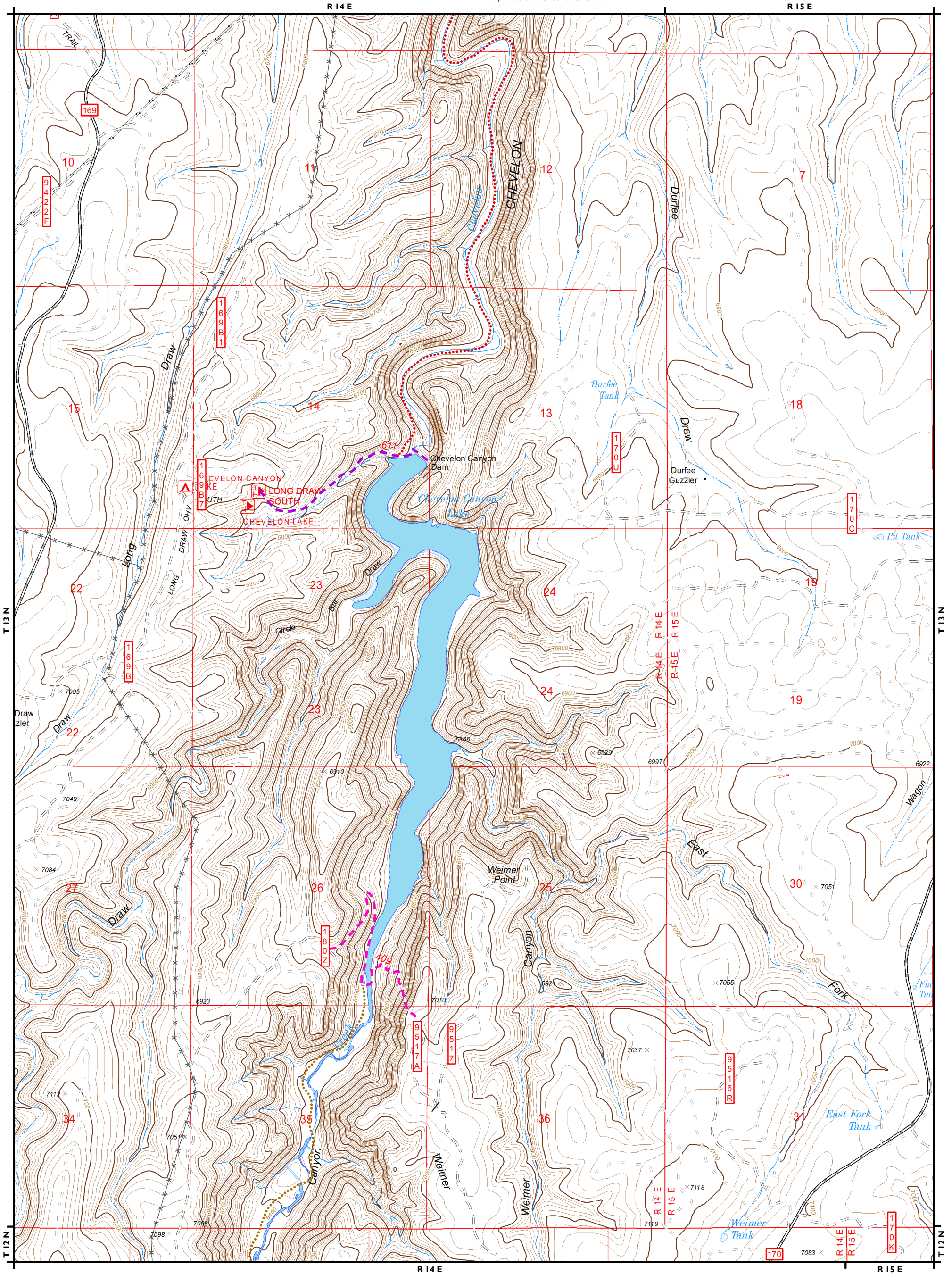
Apache-Sitgreaves National Forests
Black Mesa Ranger District

Ph. 928-535-7300; www.fs.fed.us/r3/asnf

Disclaimer

The USDA Forest Service uses the most current and complete data available. GIS data and product accuracy may vary. Using GIS products for purposes other than those for which they were intended may yield inaccurate or misleading results. The USDA Forest Service reserves the right to correct, update, modify, or replace GIS products without notification. This map is not a legal land line or ownership document. Public lands are subject to change and leasing, and may have access restrictions; check with local offices. Obtain permission before entering private land.

Map Author: srichardson01 8/16/2019



Chevelon Canyon Area Trails

- One Eighty (409)
- Chevelon Lake (611)
- Fisherman 2
- Fisherman 3
- Other FS Trail

- Cattleguard
- Gate
- Fence
- Apache-Sitgreaves NFs Land
- Other Ownership

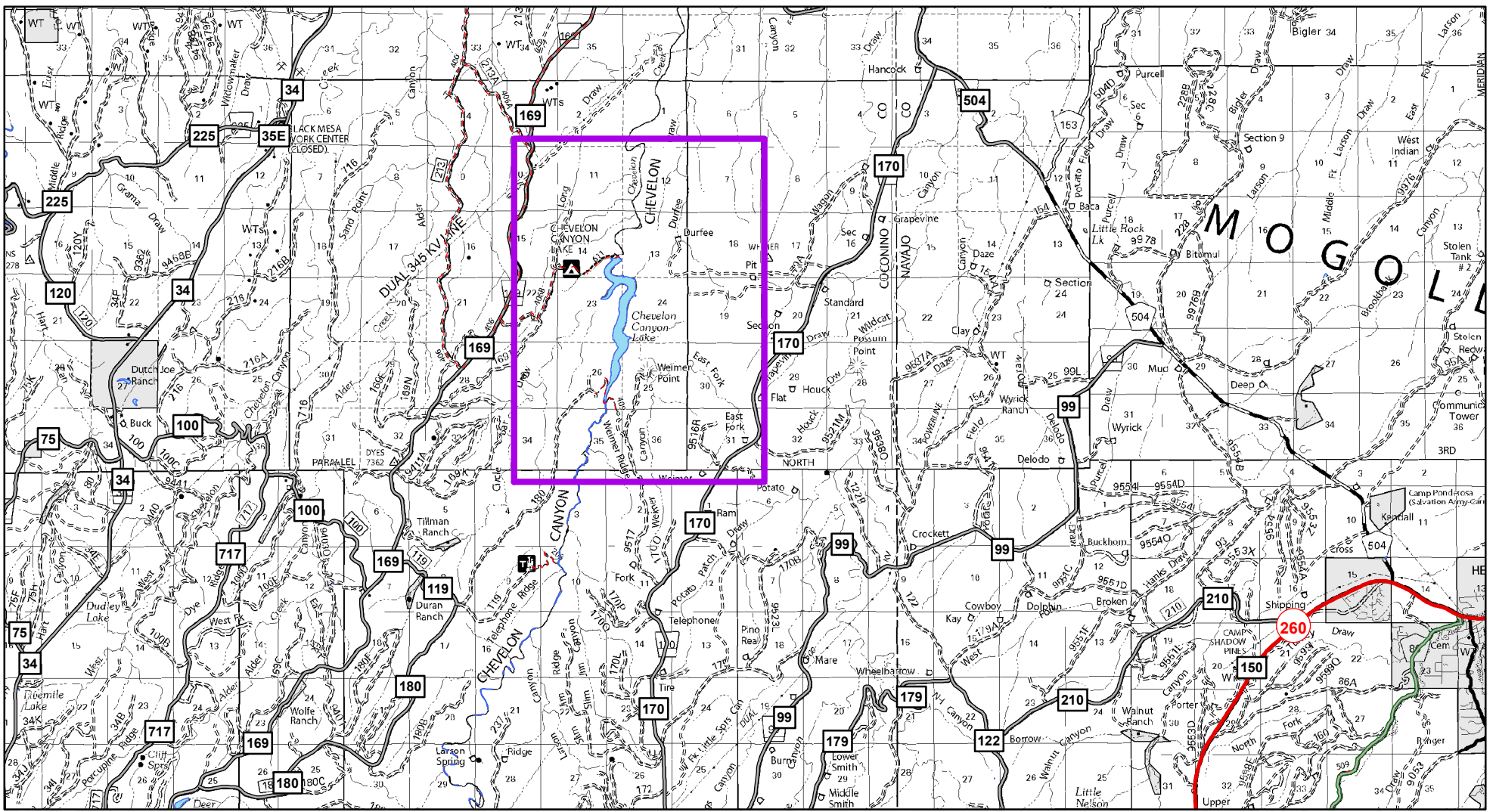
- Other National Forest Land
- Indian Reservation
- Bureau of Land Management
- State Land
- Other Ownership
- Water Body

- US / State Highways
- High Degree User Comfort
- Mod Degree User Comfort
- Suitable for Passenger Car
- High Clearance Vehicle
- Closed Road



NAD 83
UTM12N





Trails making up the Chevelon Canyon Lake Area Trails are generally located north of Forest Lakes and west of Heber-Overgaard. The Forest Service trails in this area provide access from the rim of Chevelon Canyon into the canyon itself.

Trail #	Trail Name	Miles	Activities	Difficulty	Notes	Profile
409	One Eighty Trail	1.2		More Difficult	This trail can be accessed from either the west or east side of Chevelon Canyon. From the west side, access the trail off of FR 180Z, which branches off of FR 180. From east side access off of FR 9517A (Weimer Ridge). This trail provides access to the south end of Chevelon Canyon Lake.	<p>One Eighty Trail Profile</p>
611	Chevelon Lake Trail	0.9		More Difficult	This trail begins at the Chevelon Lake Trailhead, near Chevelon Canyon Lake Campground, and takes the user down to the Chevelon Canyon Lake Dam, providing access to the lake shore.	<p>Chevelon Lake Trail Profile</p>
	Fisherman 2 (user created) Trail	5.6		More Difficult	This is a user created trail, not an official Forest Service trail. The trail begins at the Durfee Crossing Trail (408) and travels south along Chevelon Creek and joins with Chevelon Lake Trail (611) at Chevelon Lake Dam. Provides fishing access to Chevelon Creek.	<p>Fisherman 2 User Created Trail</p>
	Fisherman 3 (user created) Trail	2.8		More Difficult	This is a user created trail, not an official Forest Service trail. Links Telephone Ridge Trail (203) with One Eighty Trail (409). Trail follows the creek providing fisherman access to Chevelon Creek.	<p>Fisherman 3 User Created Trail</p>