



FOREST HILLS

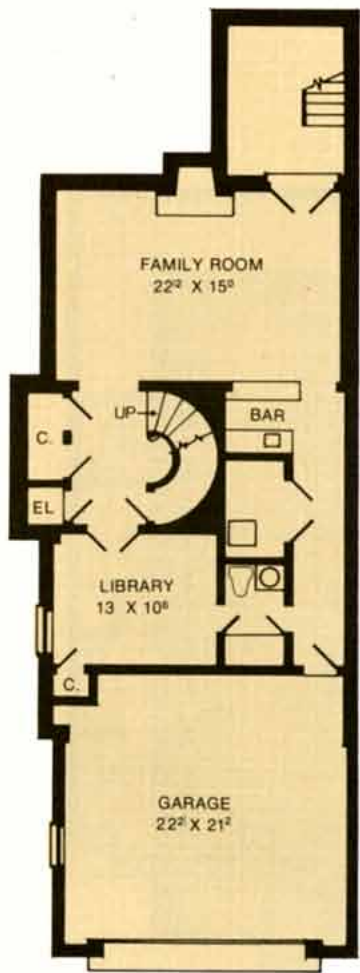


FOREST HILLS

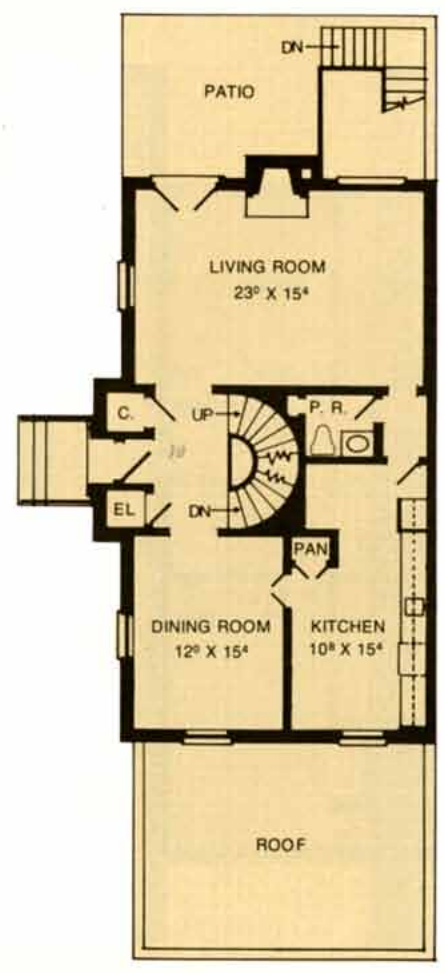
FOREST HILLS

is a secluded enclave of town houses (with the term "townhouse" used in the turn-of-the-century meaning). In very close in Arlington, Virginia these homes are unabashedly opulent and deserving of their six-figure sales prices. And this is best expressed in specifics: architectural design that is imposing and executed in all brick and masonry; standard amenities in various models that are luxury options elsewhere—fireplaces, elevators, saunas, wine rooms, wet bars, walled patios, decks. Even the minute details are impressive, cedar shakes, copper flashing, masonry solidity, floors that are lushly carpeted, Yorktown or Rutt kitchen cabinetry, et al. Forest Hills homes are not a compromise. Offering 2500 to 4000 square feet of space, that are larger than detached homes in their price range. A glance at the floor plans will show what we mean.

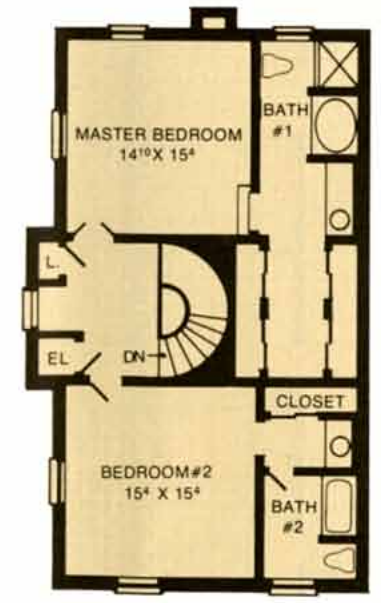




LOWER LEVEL



FIRST FLOOR



SECOND FLOOR

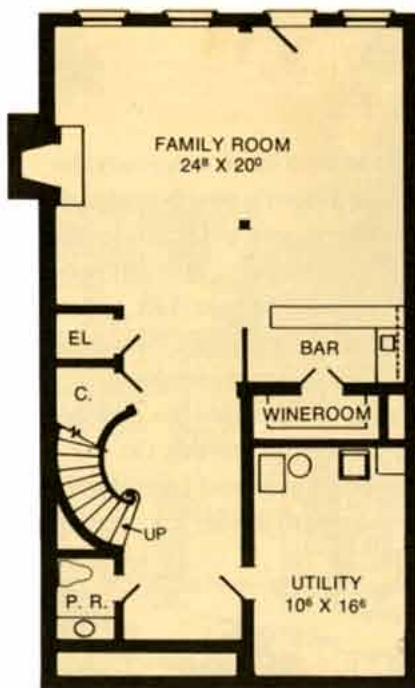
PLAN A

Designed for those who have outgrown the need for a multi-bedroom home but who do require facilities for elegant entertaining, this floor plan is both impressive—and intimate. A magnificent circular staircase sets off the formal foyer. Note such touches as the wet bar with the sizeable family room, the two fireplaces, the manner in which the dining room is placed for formal serving. On the upper level, blissful privacy and bedrooms each with their own bath. (Note the huge dressing room!)

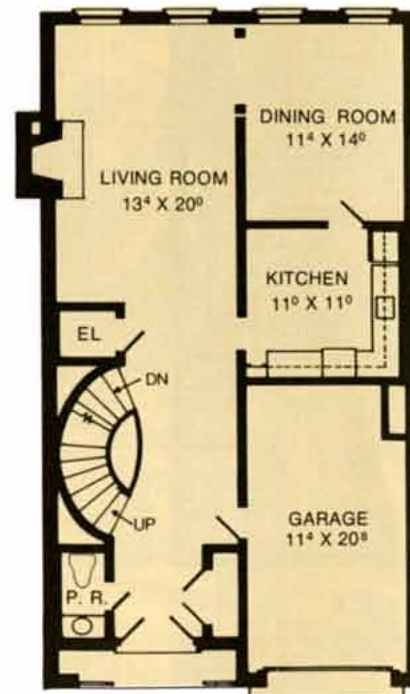


PLAN B

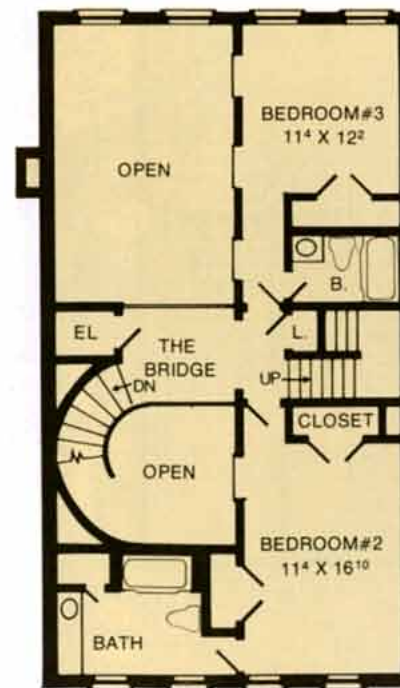
This model has innovative design touches you would normally expect to find only in a custom home. A circular stairway that soars into a flying bridge overlooking the two-story living room with its clerestory window treatment. The impact is so dramatic that you may not want to use your elevator. Note that each of the 3 bedrooms has its own bath. And, yes, the master bedroom is a penthouse suite on the 4th level. And a grand deck for outdoor living. Study this plan and it will open fascinating vistas for your lifestyle.



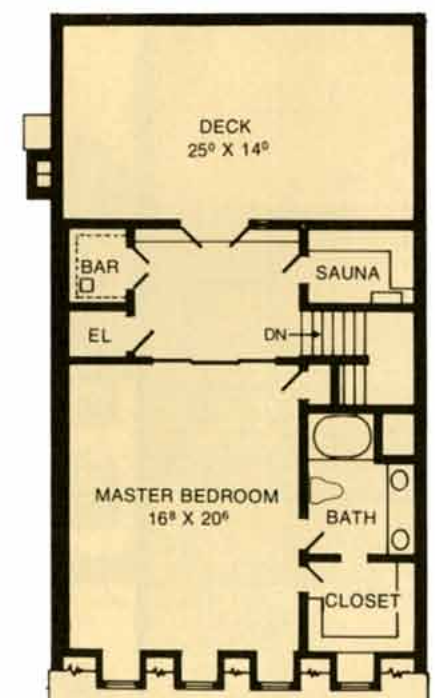
LOWER LEVEL



FIRST FLOOR



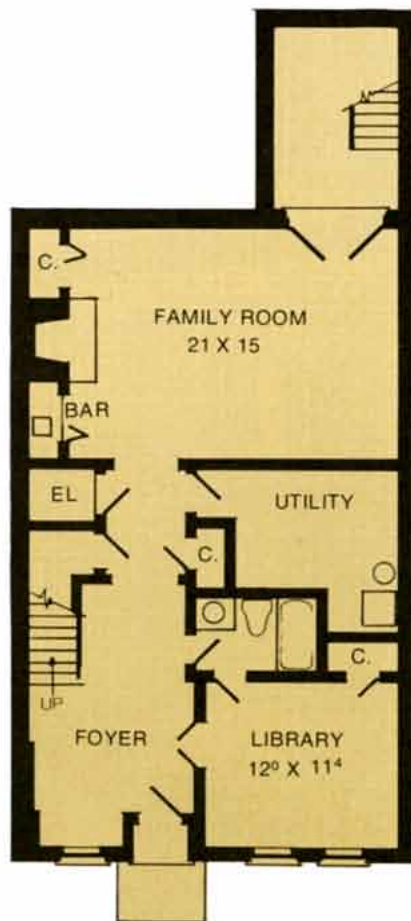
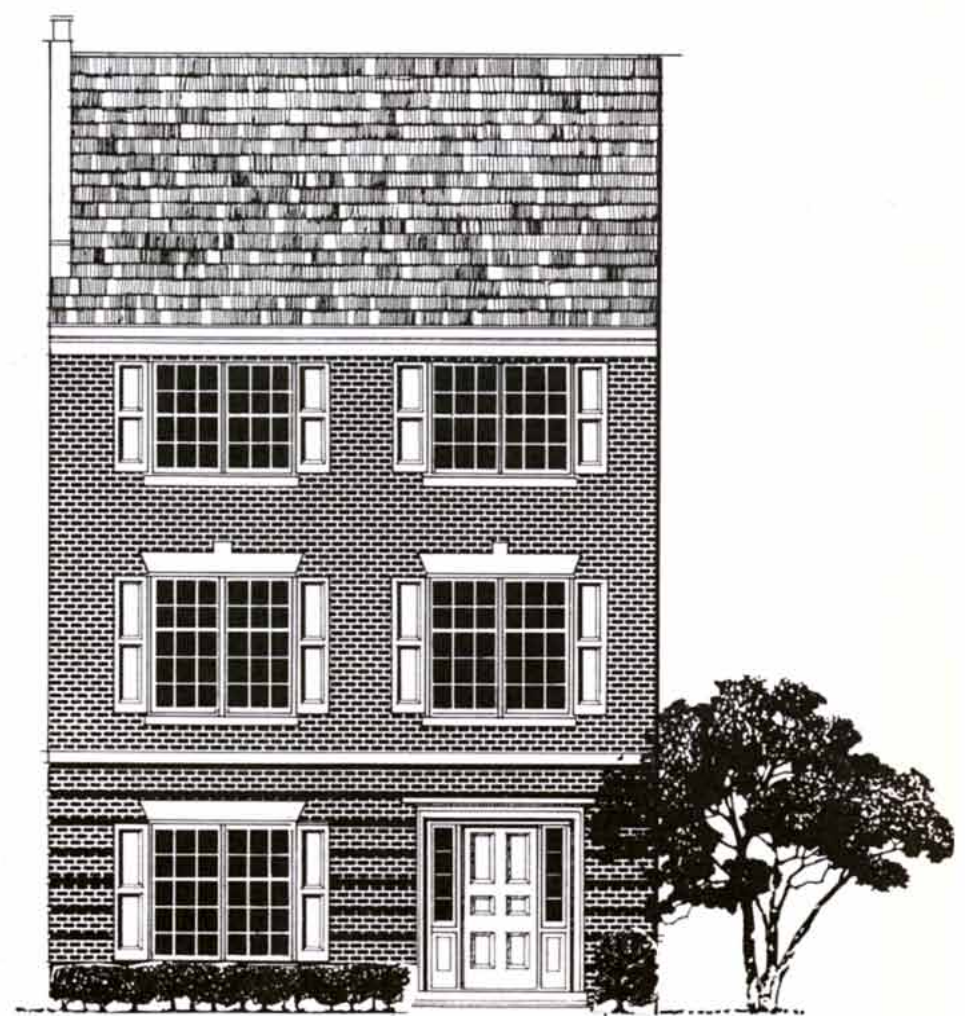
SECOND FLOOR



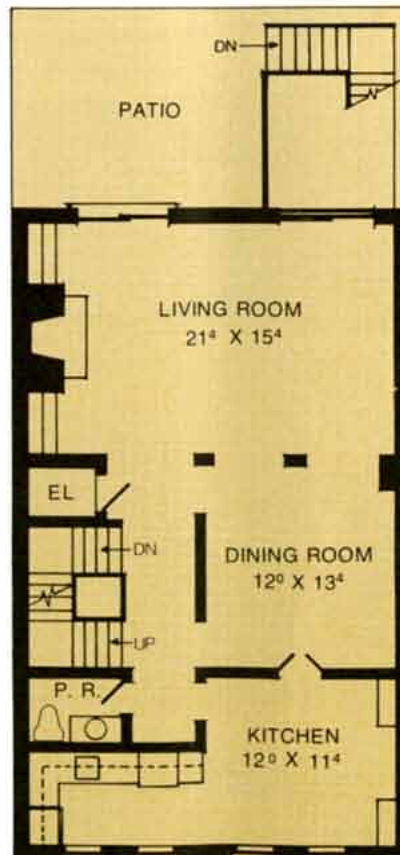
PENTHOUSE SUITE

PLAN D

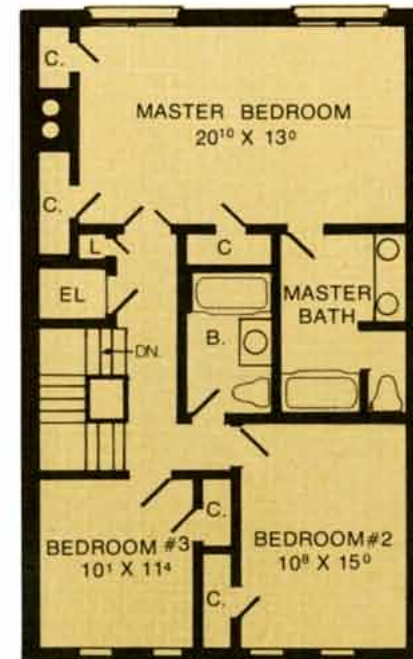
The spatial relationships in this three bedroom design are worth careful consideration. Here is a rare combination of living comfort and at-home entertaining, both casual and formal. On the first level, a foyer that makes a prestige statement and everything for daily activity. From the spacious family room (with fireplace and bar) there's access to a charming sunken garden—with stairs that lead up to the patio. On the second level, there is both a dining area and a formal dining room. On the third level, the bedrooms become an area of perfect seclusion.



FIRST FLOOR
Alternate Plan Available

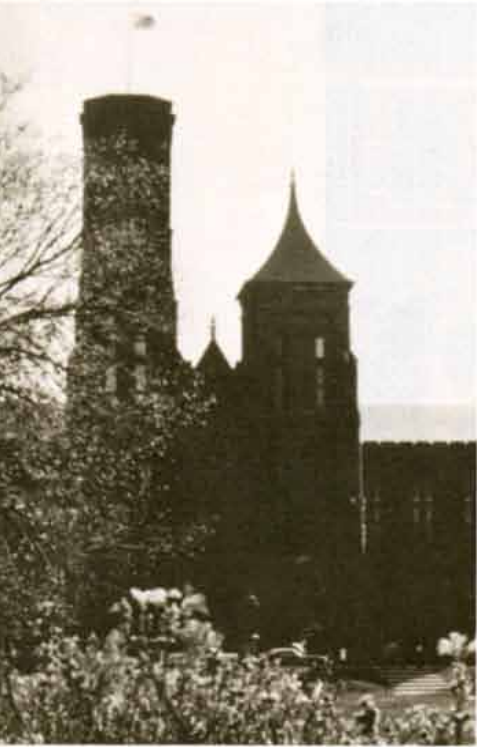


SECOND FLOOR

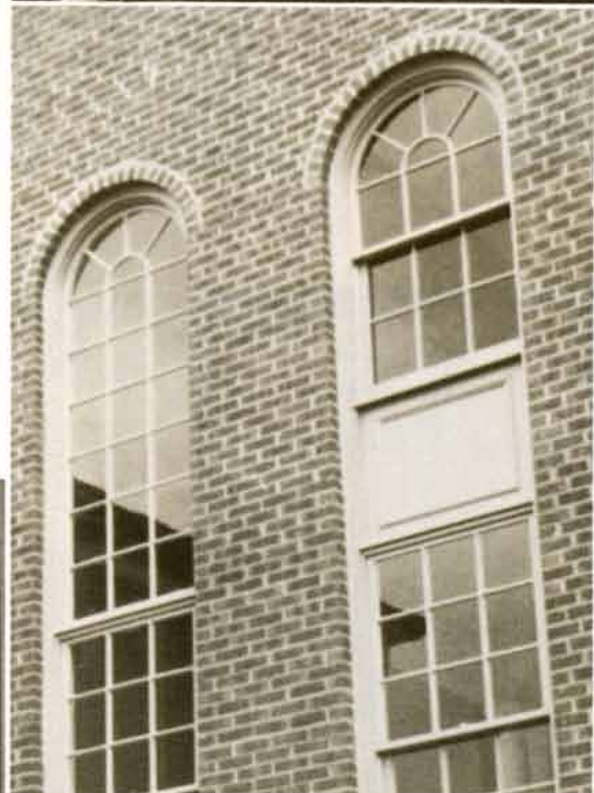


THIRD FLOOR



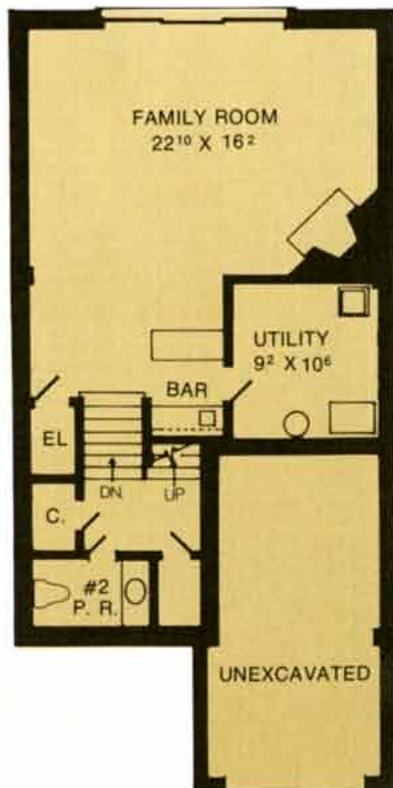


FOREST HILLS is unique in its location. As you pass thru the entrance to the community, you find yourself in a village reminiscent of an English mews. Quiet. Aloof. Secluded. Yet, these sixteen acres are immediately adjacent to Shirley Highway. In fact, many Forest Hills homes have exciting views of the Army-Navy Golf Course just across the highway. And so here is the best of both worlds; your home in an area of serenity, your home in a circle of convenience. At Forest Hills, it is only moments from your garage to the Pentagon parking lot, or the Kennedy Center, or the board rooms of Washington Business, or the shops of Georgetown, or wherever your pleasure and business lies. Stated simply, Forest Hills' site is a pearl in the oyster of Washington life.

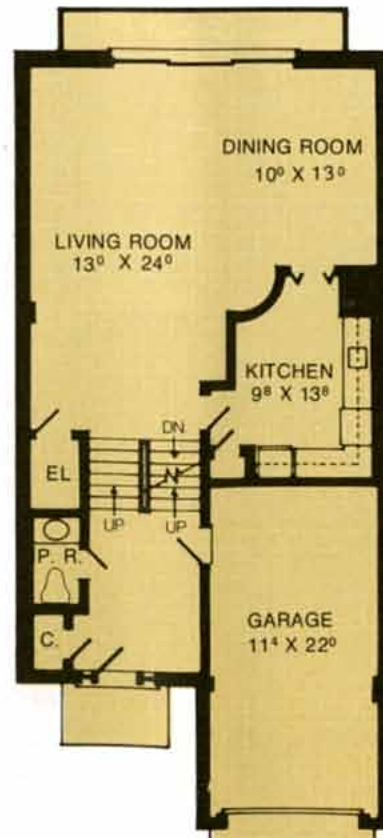


PLAN F

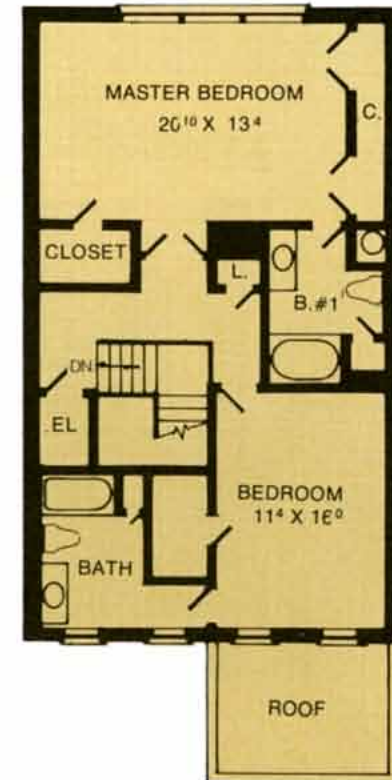
The split level concept is beautifully adapted to this Forest Hills town house. From the entry, a few steps down and you face an enormous living room with a wall of glass. One level lower there is a family room that can host a cocktail party of 50. And, of course, there's the elevator if you wish to avoid steps entirely. As in all Forest Hills designs, the bedroom level is off to itself. Here, again, each bedroom becomes a privacy suite with its own bath. The wet bar, the two powder rooms, the truly spectacular fireplace, the balcony—all are integral parts of this design.



LOWER LEVEL



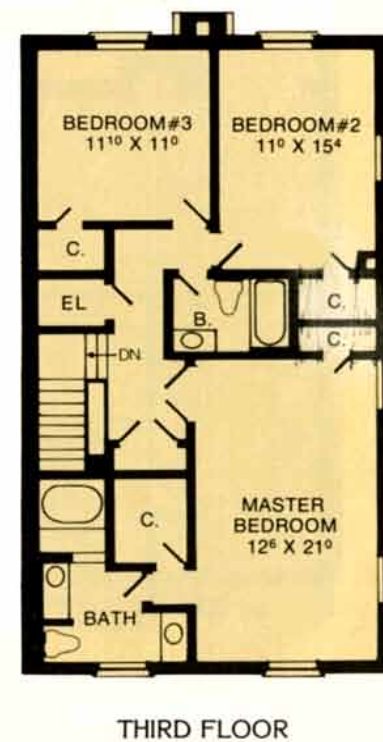
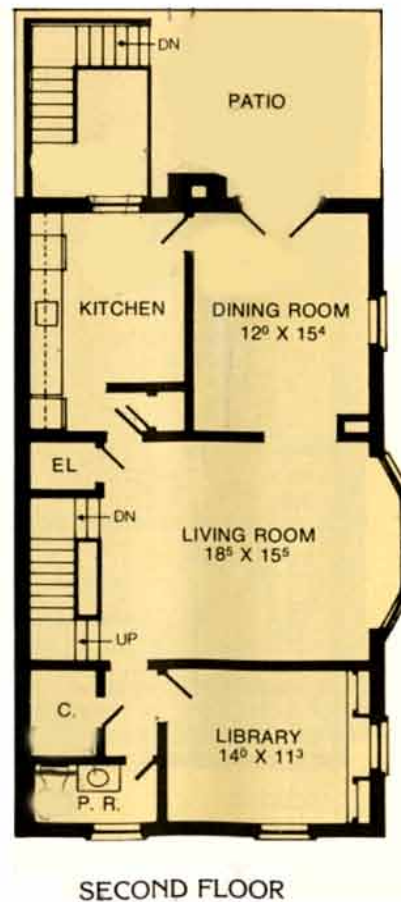
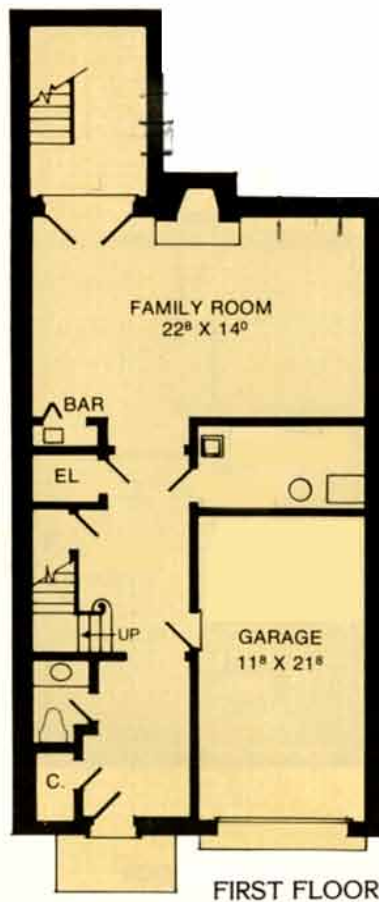
FIRST FLOOR



SECOND FLOOR

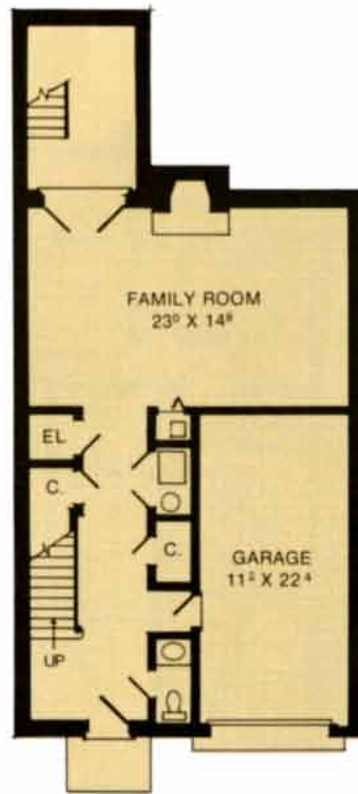
PLAN G

Formality is the motif of this Forest Hills home. From the entry level, the elevator will whisk you to the quiet of the bedroom level. Intelligently clustered on the middle level is a living room with a window treatment that is simply awesome, a library (or den), your kitchen and a dining room that opens onto a patio that's superb for sunny breakfasts or evening cocktails. And the family room (with its bar and fireplace) is a most genial place for relaxing or casual entertaining.



PLAN J

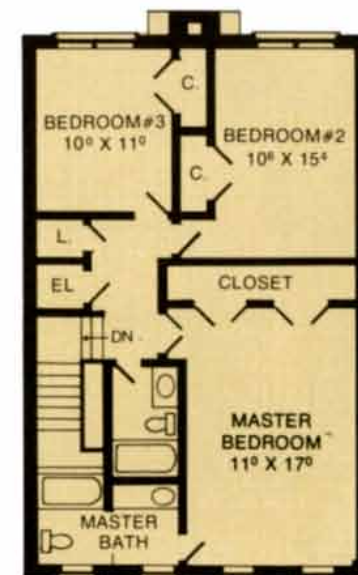
The variety of design planning is infinite. In this variation on the Forest Hills philosophy of elegance, the architects stressed a mood of "openess." Hence the kitchen that flows into the dining room which, in turn, flows into a living room where symmetry and glass enhance the spacious feel and the drama of the fireplace. Here, also, are three bedrooms, two full baths, two powder rooms, the family room with bar, the two-level walled patio. This is more than a town house; this is a great deal of home.



FIRST FLOOR



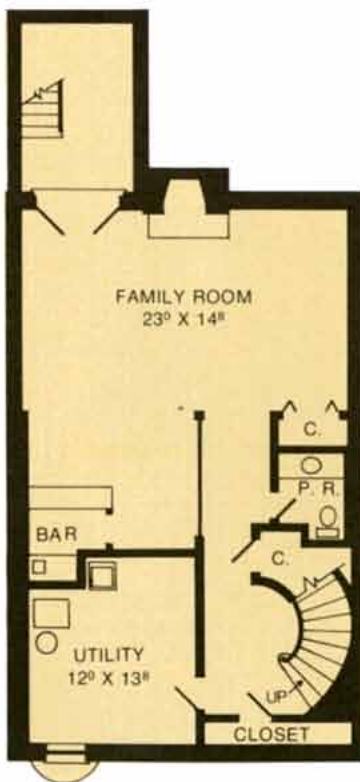
SECOND FLOOR



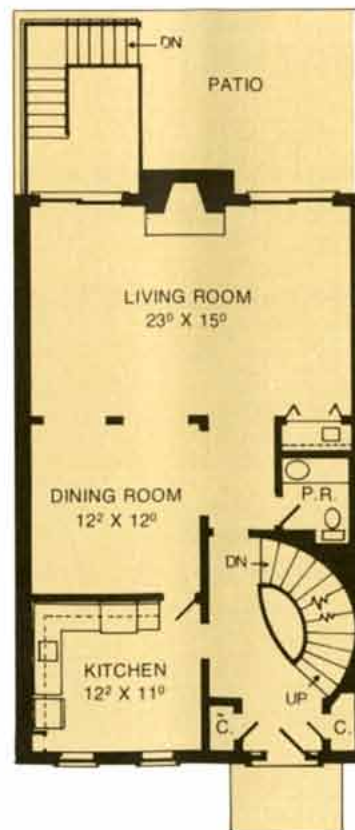
THIRD FLOOR

PLAN K

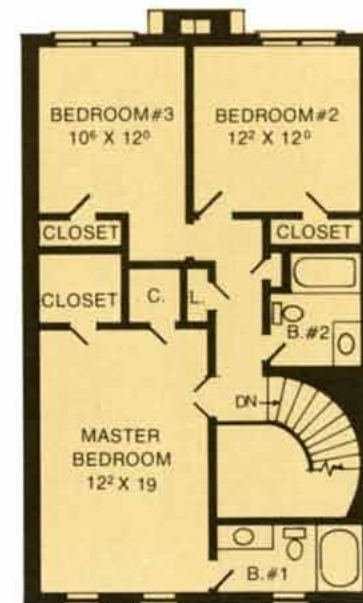
It is the circular staircase that makes the first dramatic statement in this Forest Hills town house. On the entry level, the eye is delighted with the sweeping curve that ties all three levels into an impressive entity. A few steps down, the family room with a wet-bar alcove which is almost a lounge by itself. Kitchen, dining room and living room (another fireplace! and another bar!) are compatibly arranged. And take a hard look at the closet and bathroom arrangement with the three bedrooms. In a word, this is comfort. And, yes indeed, the dual patios are part of the master plan.



LOWER LEVEL



FIRST FLOOR



SECOND FLOOR

. . . to achieve the very high standards established for Forest Hills calls for a team of experienced professionals dedicated to better building through research, design and imagination.

Mr. Albert G. Van Metre and the company he heads is such a team. We believe that people need more than a house; people need a complete community in which to enjoy the full life . . . in a community planned for a more rewarding future. Forest Hills is that kind of community.

We develop the land; we create the environment; we build the dwellings . . . we blend nature with technical know how.

Over the past twenty years Mr. Van Metre has built homes providing gracious livability for more than 5,000 families in the National Capital Area. Forest Hills is destined to be the crowning achievement of these many years of offering the soundest possible investment to countless Washington area families.

Developed and Built By
A. G. Van Metre Associates, Inc.
in conjunction with
FOREST HILLS ASSOCIATES

DIRECTIONS. From 14th Street Bridge, exit to Arlington Ridge Road—to South 23rd Street, right on 23rd, one block to Forest Hills on the left.

Model Home Phone 892-2742

Architects
PATTERSON & WORLAND
Bethesda, Maryland

